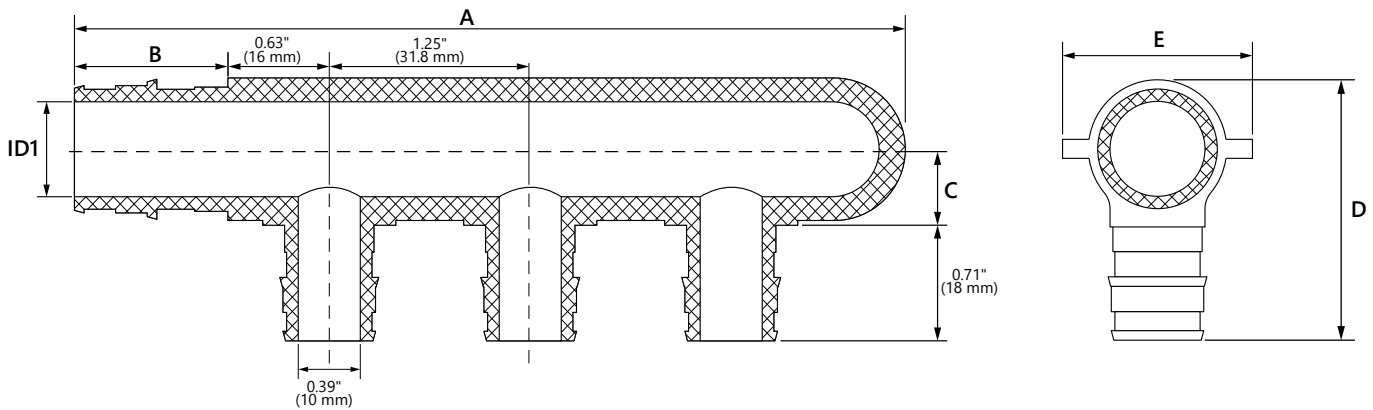


Job or Customer :	
Location :	
Engineer :	
<input type="checkbox"/> Complies with Spec <input type="checkbox"/> Alternate	Notes :
Contractor :	
HeatLink Rep :	
Submitted By :	Date :
Approved By :	Date :
P.O. Number :	Date :

Description

Closed one end and 3/4" or 1" PEX F1960 on the other end. 1/2" PEX F1960 branches in a single row. Used with PEX-a potable water expansion systems.

Qty	Stk. #	# of Ports	Inlet	Outlet	Dimension, in/(mm)						Weight, lb/(kg)
					A	B	C	D	E	ID1	
	EX13203	3	3/4"	Closed	5.16 (131.0)	0.95 (24.0)	0.47 (12.0)	1.61 (41.0)	1.18 (30.0)	0.59 (15.0)	0.084 (0.038)
	EX13204	4	3/4"	Closed	6.41 (162.75)	0.95 (24.0)	0.47 (12.0)	1.61 (41.0)	1.18 (30.0)	0.59 (15.0)	0.106 (0.048)
	EX13206	6	3/4"	Closed	8.90 (226.25)	0.95 (24.0)	0.47 (12.0)	1.61 (41.0)	1.18 (30.0)	0.59 (15.0)	0.153 (0.069)
	EX13806	6	1"	Closed	9.41 (239.25)	1.18 (30.0)	0.59 (15.0)	1.89 (48.0)	1.50 (38.0)	0.79 (20.0)	0.208 (0.094)



Technical Data

Specifications	
Material	PPSU
Operating Pressure rating	180°F @ 100psi (82.2°C @ 0.69MPa)

Listings

cNSFus-pw-G
Codes
IAPMO UPC

Standards

ASTM F1960 NSF/ANSI 14
ASTM F877 NSF/ANSI 61
CSA B137.5 NSF/ANSI 372

Installation

Installation must follow all of HeatLink's instructions and guidelines.

Related Documents

- PEX-a F1960 Potable Water Expansion System Installation Guide (L3240)
- HeatLink Limited Plumbing Warranty

This page is intentionally blank.