

## FEATURES & BENEFITS

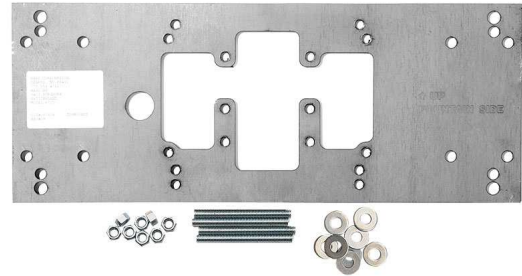
### MOUNTING

3/16" (.47 cm) steel pre-drilled and threaded mounting plate along with all-thread studs

### OPTIONS

- ❑ Support Frame: Model 6800 universal in-wall mounting support for use with most fountains.

For more information, visit [www.hawsc.com](http://www.hawsc.com) or call (888) 640-4297.

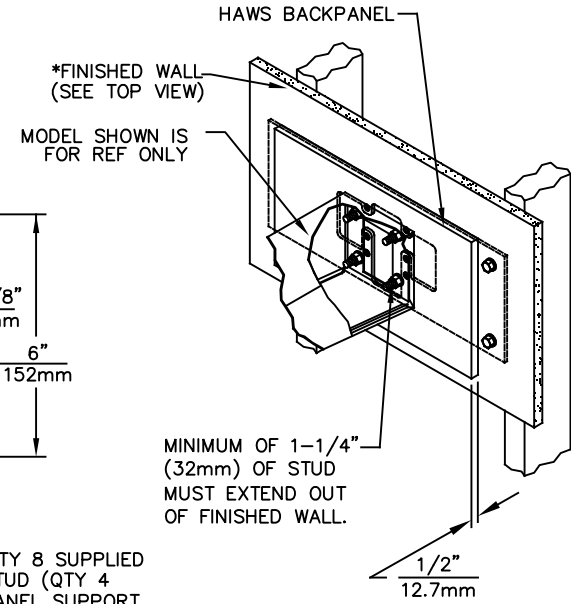
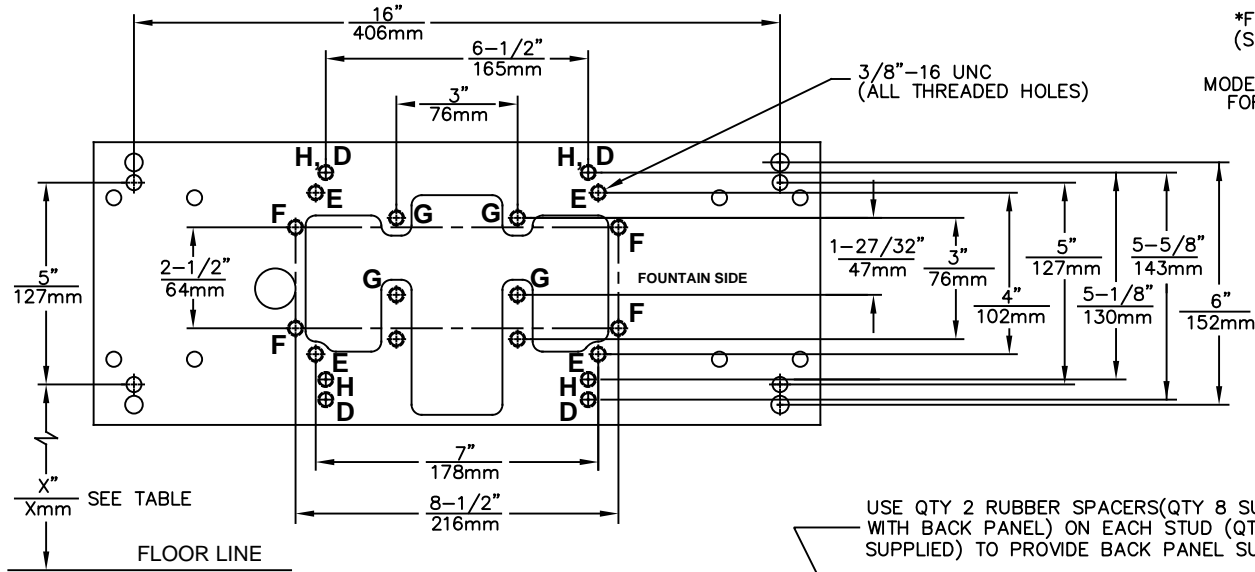


## SPECIFICATIONS

Model 6700 universal mounting plate shall include a 3/16" (.47 cm) steel pre-drilled and threaded mounting plate along with all-thread studs, nuts, and washers for use with many Haws single bubbler fountains.

## APPLICATIONS

Haws produces mounting plates and frames to assist in the installation process as well as to provide a solid base for the wall mounted designed fountains. Mounting plates and frames meet the requirements solely for the specified applicable fountains and are not designed to be used in the installation of any unspecified fountain.



USE QTY 2 RUBBER SPACERS(QTY 8 SUPPLIED WITH BACK PANEL) ON EACH STUD (QTY 4 SUPPLIED) TO PROVIDE BACK PANEL SUPPORT.

MODEL	MTG HOLES	"X" DIM
1000	"G"	25-3/8" [645mm]
1001	"G"	25-3/8" [645mm]
1025	"D"	28-1/8" [714mm]
1047	"E"	27-1/2" [699mm]
1075	"E"	28" [711mm]
1105	"H"	34-5/16" [872mm]
1109	"H"	27-5/16" [694mm]
1116	"G"	25-3/8" [645mm]
1001FR	"G"	25-3/8" [645mm]
1109FR	"H"	27-5/16" [694mm]
1075FR	"E"	28" [711mm]
1311	"E"	26-3/4" [679mm]
1107L	"F"	26-3/16" [665mm]
1311TRIMCA	"E"	26-3/4" [679mm]

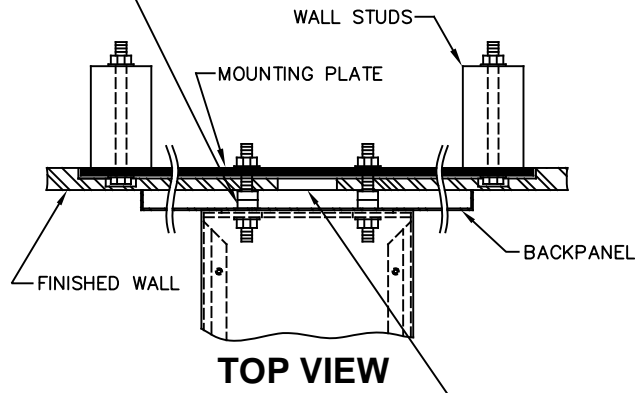
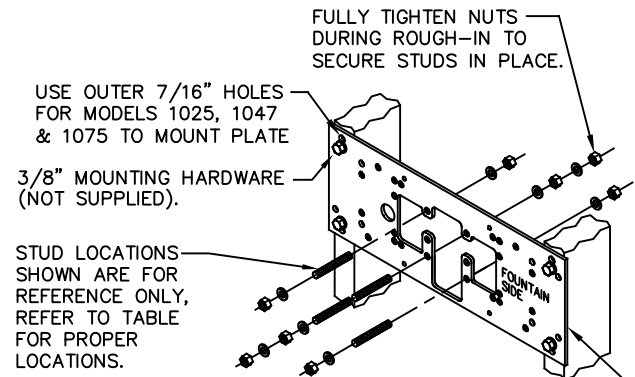


PLATE AND FOUNTAIN MOUNTING HARDWARE (3/8"-16 UNC) SUPPLIED BY HAWS.

\*FINISH WALL OVER MOUNTING PLATE AND BEHIND BACKPANEL. MAKE SURE THAT FINISHED WALL EXTENDS WITHIN THE BRACKET/BOWL MOUNTING HOLES (TO PROVIDE SURFACE AREA FOR RUBBER SPACERS TO CONTACT).

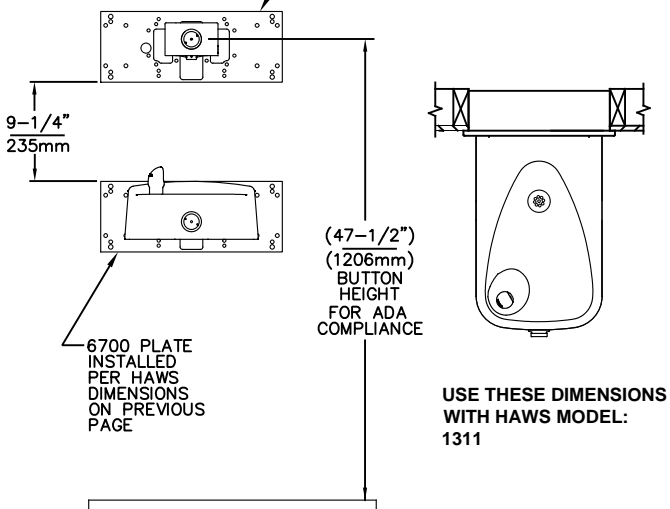
**CAUTION**

REGARDING CONCRETE/MASONRY WALL MOUNTING: DO NOT SECURE MOUNTING PLATE TO SAME SIDE OF WALL AS FOUNTAIN. AVOID COMPROMISING INTEGRITY OF WALL WHEN ANCHORING FOUNTAIN. IT IS RECOMMENDED THAT INSTALLER CALL TECHNICAL SUPPORT IF THERE ARE ANY QUESTIONS AS TO HOW TO OBTAIN A PROPER ANCHOR IN CONCRETE/MASONRY WALLS. 1-800-766-5612

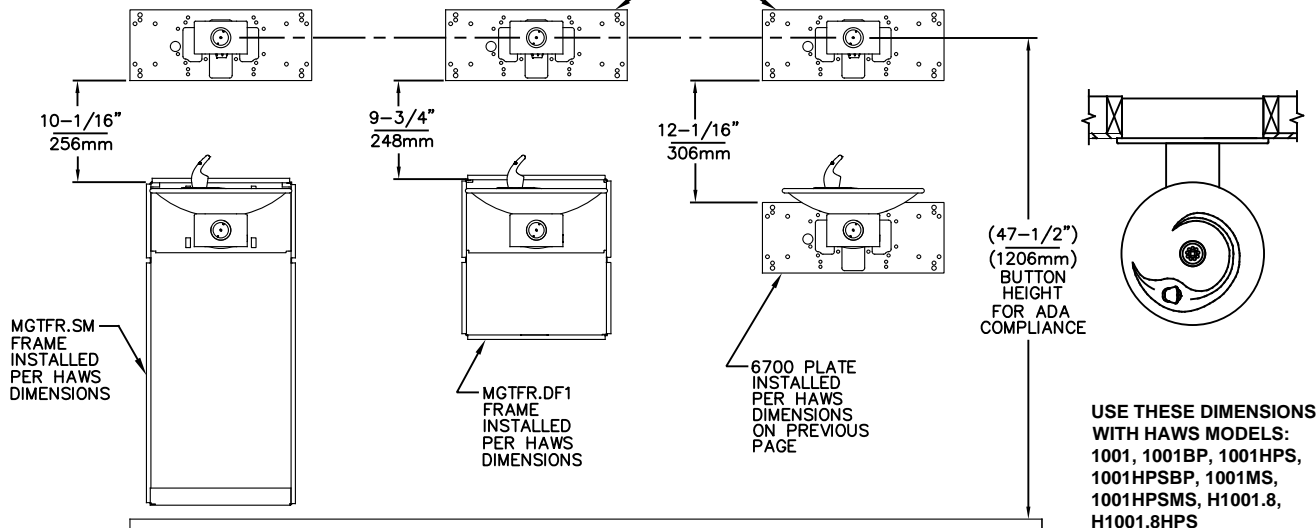
1455 KLEPPE LANE  
SPARKS, NEVADA 89431  
(775) 359-4712 FAX (775) 359-7424  
E-MAIL: HAWS@HAWSCO.COM  
WEBSITE: WWW.HAWSCO.COM

ECN NO.	REVISED PER	BY:	MODEL(S)	PART NUMBER
	ECN: 5172	FV		0002080016
DRAWN:	DATE:	CHK'D:		DRAWING NO.
CJL	09/03/03		6700	05387C00
APPROVED:	DATE:		MOUNTING PLATE, SINGLE	REV
FV	02/27/17			20
SCALE: 1/5		DRAWING TYPE: INSTALLATION		SIZE: A SHEET 1 OF 2

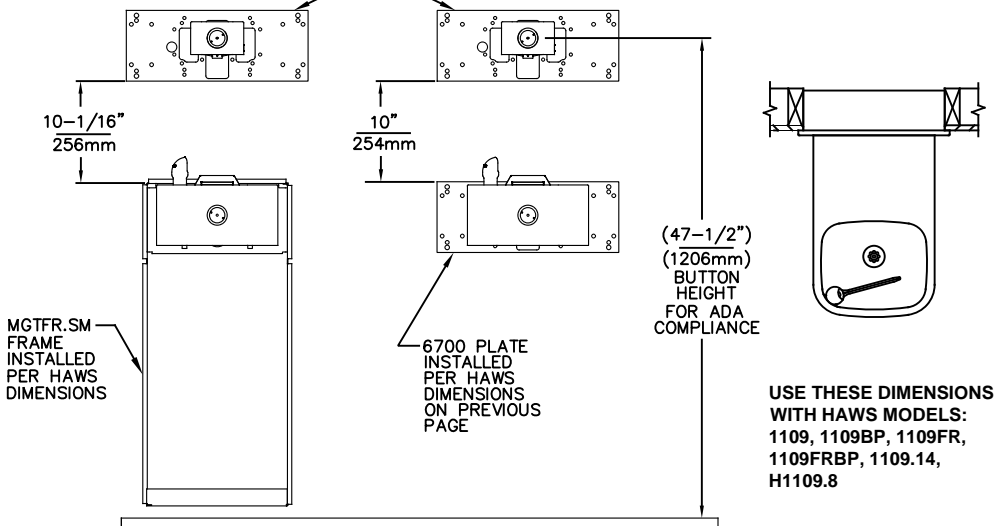
6700 PLATE INSTALLED TO MOUNT 1920 BOTTLE FILLER



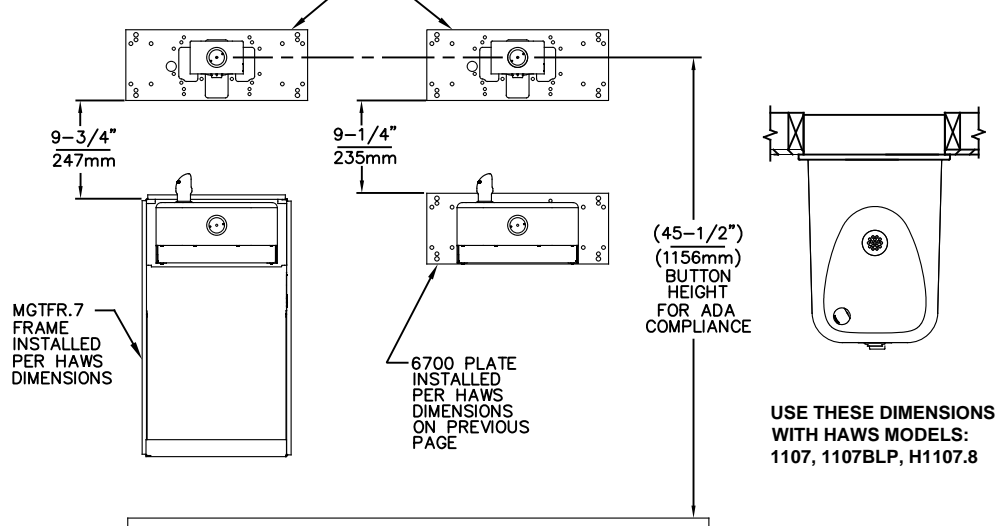
6700 PLATE INSTALLED TO MOUNT 1920 BOTTLE FILLER



6700 PLATE INSTALLED TO MOUNT 1920 BOTTLE FILLER



6700 PLATE INSTALLED TO MOUNT 1920 BOTTLE FILLER



NOTES:  
WHEN INSTALLING THIS UNIT, LOCAL, STATE OR FEDERAL CODES SHOULD BE ADHERED TO.



1455 KLEPPE LANE  
SPARKS, NEVADA 89431  
(775) 359-4712 FAX (775) 359-7424  
E-MAIL: HAWS@HAWSCO.COM  
WEBSITE: WWW.HAWSCO.COM

ECN NO.	REVISED PER	BY:	MODEL(S)	PART NUMBER
	ECN: 5172	FV		0002080016
DRAWN:	DATE:	CHK'D:		DRAWING NO.
MJ	02/09/17		6700	05387C00
APPROVED:	DATE:		MOUNTING PLATE, SINGLE	REV
FV	02/27/17			20
SCALE: 1/5			DRAWING TYPE: INSTALLATION	SIZE: A SHEET 2 OF 2