

## FEATURES & BENEFITS

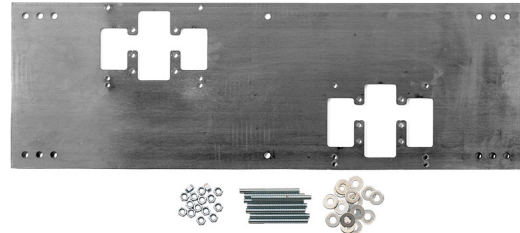
### MOUNTING

3/16" (.47 cm) steel pre-drilled and threaded mounting plate along with all-thread studs

### OPTIONS

- ❑ Support Frame: Model 6800 universal in-wall mounting support for use with most fountains.

For more information, visit [www.hawsc.com](http://www.hawsc.com) or call (888) 640-4297.



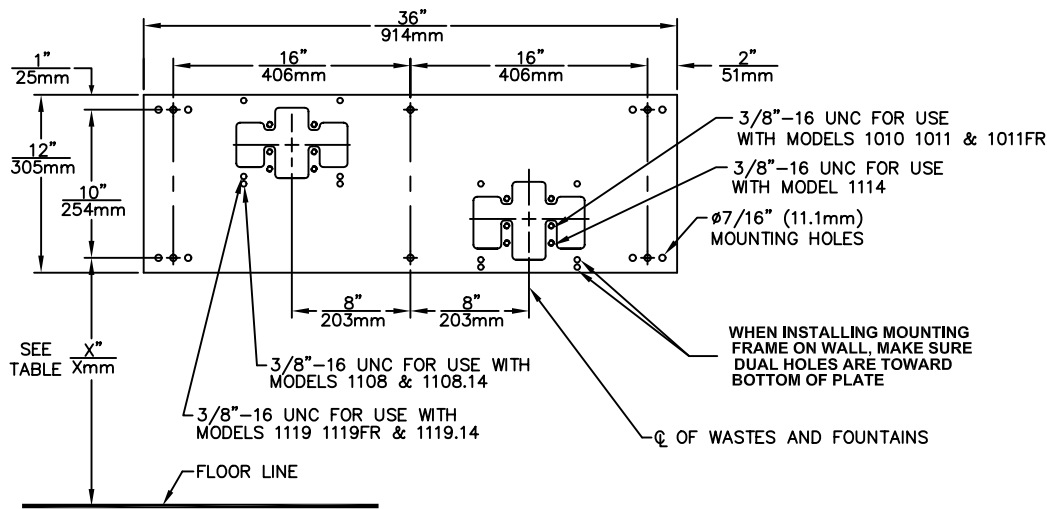
## SPECIFICATIONS

Model 6700.4 'Hi-Lo' universal mounting plate shall include a 3/16" (.47 cm) steel pre-drilled and threaded mounting plate along with all-thread studs, nuts, and washers for use with many Haws dual bubbler fountains

## APPLICATIONS

Haws produces mounting plates and frames to assist in the installation process as well as to provide solid bases for the wall mounted designed fountains. Mounting plates and frames meet the requirements solely for the specified applicable fountains and are not designed to be used in the installation of any unspecified fountain.

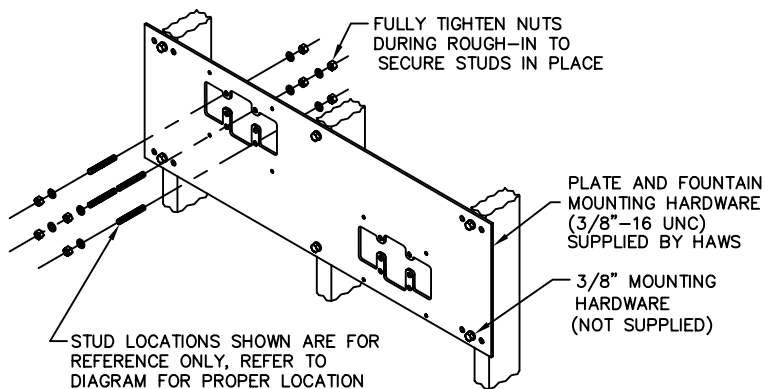




DIMENSION	MODEL	
"X"	25-1/2"[648mm]	
LOWER SUPPLY	28-3/4"[730mm]	
LOWER WASTE	27-7/8"[708mm]	
UPPER SUPPLY	33-3/4"[857mm]	
UPPER WASTE	32-7/8"[835mm]	

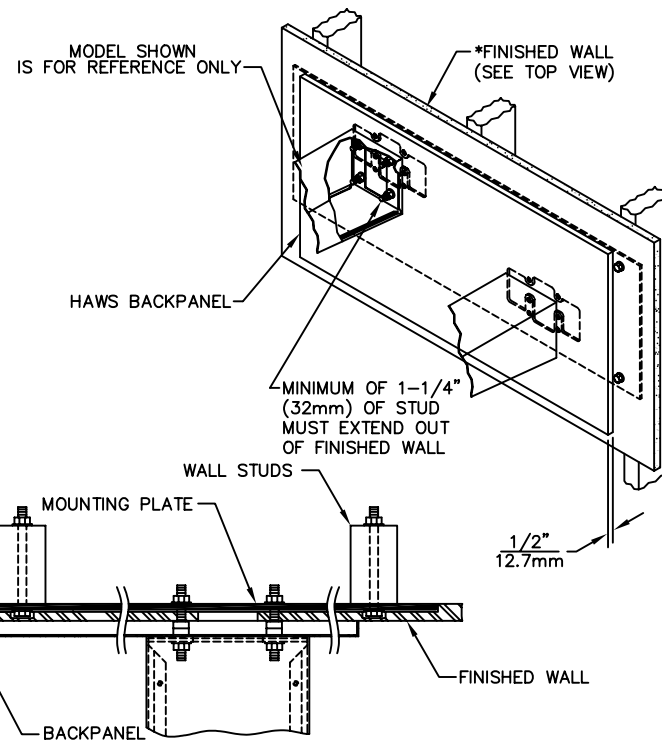
DIMENSION	MODEL	
"X"	27-5/8"[702mm]	27-5/8"[702mm]
LOWER SUPPLY	29-5/8"[752mm]	29-5/8"[752mm]
LOWER WASTE	30-3/4"[781mm]	30-3/4"[781mm]
UPPER SUPPLY	35-3/8"[905mm]	35-3/8"[905mm]
UPPER WASTE	36-1/2"[927mm]	36-1/2"[927mm]

DIMENSION	1011FR	1119FR
"X"	25-1/2"[648mm]	27-5/8"[702mm]
SUPPLY	SEE FREEZE VALVE ROUGH-IN	SEE FREEZE VALVE ROUGH-IN
WASTE	SEE FREEZE VALVE ROUGH-IN	SEE FREEZE VALVE ROUGH-IN



USE QTY 2 RUBBER SPACERS (SUPPLIED WITH BACK PANEL) ON EACH BOLT TO PROVIDE BACK PANEL SUPPORT.

\*FINISH WALL OVER MOUNTING PLATE AND BEHIND BACKPANEL, MAKE SURE THAT FINISHED WALL EXTENDS WITHIN THE BRACKET/BOWL MOUNTING HOLES (TO PROVIDE SURFACE AREA FOR RUBBER SPACERS TO CONTACT).



TOP VIEW

CAUTION

REGARDING CONCRETE/MASONRY WALL MOUNTING: DO NOT SECURE MOUNTING PLATE TO SAME SIDE OF WALL AS FOUNTAIN. AVOID COMPROMISING INTEGRITY OF WALL WHEN ANCHORING FOUNTAIN. IT IS RECOMMENDED THAT INSTALLER CALL TECHNICAL SUPPORT IF THERE ARE ANY QUESTIONS AS TO HOW TO OBTAIN A PROPER ANCHOR IN CONCRETE/MASONRY WALLS. 1-800-766-5612



**Haws**  
corporation

1455 KLEPPE LANE  
SPARKS, NEVADA 89431  
(775) 359-4712 FAX (775) 359-7424  
E-MAIL: HAWS@HAWSCO.COM  
WEBSITE: WWW.HAWSCO.COM

ECN NO.	REVISED PER ECN: 4423	BY: HM	CHKD:	MODEL(S):
DRAWN: C.J.L.	DATE: 04/29/93			6700.4 MOUNTING PLATE, DUAL
APPROVED:	DATE:			INFO FAX DOC #: 267004
				SCALE: 1:13 DRAWING TYPE: INSTALLATION/FAXBACK

PART NUMBER: 0002080023	REV: 15
DRAWING NUMBER: 10750C00	SIZE: A SHEET 1 OF 1