

HYDRATION PRODUCTS



DRINKING FOUNTAINS
and BOTTLE FILLERS



ABOUT HAWS®



GLOBAL CUSTOMERS



GLOBAL VISION



LOCAL SERVICE

As we proudly celebrate our supercentenarian status, *Haws* acknowledges 110 years of creativity, loyalty, excellence, and family values that continue to craft an attitude of ingenuity – the hallmark of the *Haws* culture.

Every day, we're working to address your needs and solve your challenges with imagination and initiative. Our global team invents, manufactures, and builds standardized and customized emergency response products as well as hydration equipment. With more than 8,000 distribution locations and 250 employees worldwide, we continually focus on quality, service, reliability, and complete solution support.

With the invention of the drinking fountain in 1906 by Luther Haws, the Haws Sanitary Drinking Faucet Company was formed in Berkeley, California. During the 1950s, *Haws* successfully introduced emergency drench showers and safety eyewashes into its manufacturing line. Establishing headquarters in Sparks, Nevada in 1996, *Haws* continued to expand to points around the globe: Haws AG (Switzerland) in 1985, Haws Manufacturing Pte, Ltd (Singapore, 1999) (China, 2015), Haws-Avlis (Brazil) in 2001, and India in 2015.

To this day, Haws Corporation®'s innovative spirit is driven by its dedicated and visionary team members, and led by third, fourth and fifth generations of the *Haws* family.

HAWS: LEAD-FREE PRODUCTS SINCE 1990



Reduction of Lead in Drinking Water Act, an amendment to the *Safe Drinking Water Act*, establishes a maximum lead content of wetted surfaces of plumbing products to a weighted average of 0.25%. With an effective date of January 4, 2014, this law necessitates all potable plumbing products sold and installed meet the new lead reduction requirement.

All *Haws* drinking fountain products are lead-free, as well as several AXION® Emergency Tempering Valves. These *Haws* products have NSF/ANSI 61-section 8 or section 9 and NSF/ANSI 372 certifications, obtained through the internationally recognized CSA Testing Laboratory, and are AB1953 compliant.

HOW DID THE LEAD-FREE DEFINITION CHANGE?

Lead-free means not containing more than 0.2% lead when used with respect to solder and flux; and not more than a weighted average of 0.25% lead when used with respect to the wetted surfaces of pipes, pipe fittings, plumbing fittings, and fixtures.

WHAT PRODUCTS ARE INCLUDED?

Pipes, pipe fittings, plumbing fittings and fixtures that may provide water for human consumption. This includes devices that are typically integrated into a faucet or plumbing system that deliver drinking water.

HOW DOES THE LAW APPLY TO REPAIRS AND REPLACEMENT PARTS?

Pipes, fittings or fixtures that were installed prior to the effective date and are being repaired do not need to meet the new definition of lead-free because the pieces are not being "introduced into commerce" but any replacement parts must be the lead-free definition.

Information sourced from water.epa.gov/drink/info/lead

BOTTLE FILLERS :: FILTERED WATER



BOTTLE FILLERS WITH CERTIFIED FILTERED WATER

Offering recessed and surface-mounted versions, the wall-mounted units are ideal for applications with high traffic. Both wall-mounted units include a filter replacement indicator light for the Lifecycle Control filter. The front panel LED filter indicator light changes color to denote filter life status. Use of antimicrobial additives in key components to protect them against the growth of mold and mildew.

PANEL CUSTOMIZATION offers individual site design options.

RECESSED – MODEL 2000S

The perfect solution for permanent installations, Model 2000S installs directly into your wall and offers a plumbed drain.

In addition, Model 2000S meets the requirements of the American with Disabilities Act.†

SURFACE MOUNT – MODEL 2000SMS

The surface-mount installs onto any wall surface without major infrastructure changes. An integral drain pan or plumbed drain are available options.

Both wall-mounted units are tested and certified by CSA against NSF/ANSI Standard 42 for the reduction of chlorine (taste and odor) and against NSF/ANSI Standard 53 for the reduction of lead and 99.9% cysts, NSF/ANSI Standard 61, Section 9, NSF/ANSI 372, CSA Standard B483.1, and California Health and Safety Code 116875 (AB 1953).



Model 2000S



Model 2000SMS

FILTERED BOTTLE FILLERS PRODUCT COMPARISON

FEATURES	2000S	2000SMS
FILTER LIFE	2,500 Gallons, Lifecycle Control	2,500 Gallons, Lifecycle Control
ACTIVATION	Touch-Free Sensor	Touch-Free Sensor
SELF-CLEANING	Purge Feature	Purge Option
EXTERIOR	Stainless Steel, ABS Plastic	Stainless Steel, ABS Plastic
FLOW RATE	.5 GPM (1.9 LPM)	.5 GPM (1.9 LPM)
WATER INLET	Plumbed	Plumbed
WATER TEMPERATURE	Chiller Optional	Chiller Optional
FILTER INDICATOR LIGHT	✓	✓
DIMENSIONS (external)	15" W x 3.9" D x 30.25" H 38.1 cm x 9.9 cm x 76.84 cm	15" W x 6.9" D x 30.25" H 38.1 cm x 17.53 cm x 76.84 cm
WATER DISPENSING AREA	5" W x 2" D x 11.5" H 12.7 cm x 5.08 cm x 29.21 cm	5" W x 2" D x 11.5" H 12.7 cm x 5.08 cm x 29.21 cm
INSTALLATION	Into Wall	Onto Wall Surface
WARRANTY	3-year	3-year
ADA COMPLIANT	✓	✓+
VOLTAGE	115v	115v



+When installed at the proper height



FEATURES & BENEFITS

- 100% lead-free waterways
- 18-gauge, Type 304 stainless steel bowl with 14-gauge bracket
- Polished, chrome-plated brass vandal-resistant bubbler and push button
- Satin stainless steel, and high-polished stainless steel finishes available
- Custom finishes and configurations available
- Laminar flow which produces a more even flow and eliminates splashing
- Barrier free for full ADA access
- Front access stream adjustment, cartridge and strainer
- Elegant swirl bowl design channels water to ensure proper drainage
- Vandal-resistant components and bottom plates
- 100% U.S.A. factory pressure tested to meet the highest quality standards



Model **1011HPS**

A Hi-Lo, barrier-free, high-polished stainless steel fountain with round sculpted bowls. Optional cane skirt also available, as shown.

WALL MOUNTED :: ARCHITECTURAL



Model 1001HPS

Barrier-free, high-polished stainless steel drinking fountain with sculpted bowl and 100% lead-free waterways.



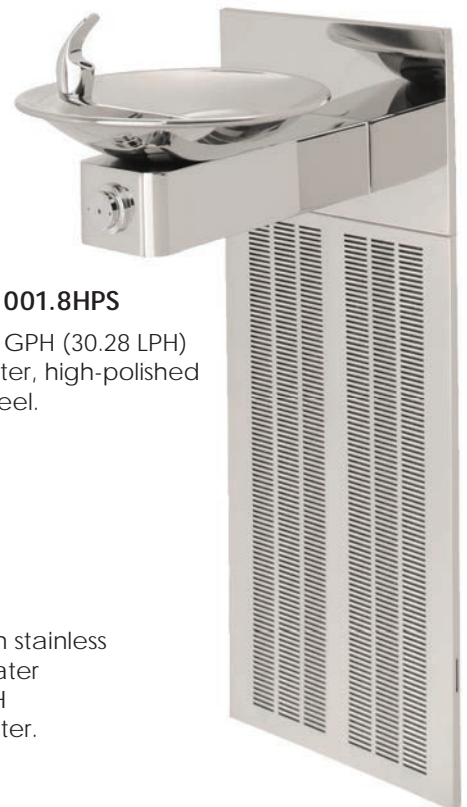
Model 1001MS

Barrier-free, satin finish, stainless steel drinking fountain with sculpted bowl, back panel and in-the-wall mounting system, and 100% lead-free waterways.



Model H1001.8HPS

Provides 8 GPH (30.28 LPH) chilled water, high-polished stainless steel.



Model H1011.8HO

Sensor operated, satin stainless steel, Hi-Lo electric water cooler provides 8 GPH (30.28 LPH) chilled water.



FEATURES & BENEFITS

- 100% lead-free waterways
- Polished, chrome-plated brass bubbler, push button and waste strainer
- Barrier free
- Front access stream adjustment, cartridge and strainer
- Vandal-resistant components
- Integral waste trap
- 100% U.S.A. factory pressure tested to meet the highest quality standards



Model **H1117.8**

14-gauge, adjustable barrier-free, Hi-Lo electric water cooler with adult and child ADA capabilities.

WALL MOUNTED



Model 1920

Versatile, wall-mounted, satin finished bottle filler can be mounted alone or above a drinking fountain. Constructed of 14-gauge, Type 304 satin finish stainless steel with 100% lead-free waterways and 1 GPM (3.78 LPM) laminar flow with push button operated stainless steel valve.



MODEL 1920 SHOWN ON DRINKING FOUNTAIN MODEL 1001BP WITH BACK PLATE MODEL BP15



Model 1900

Bottle filler is easily mounted over virtually any drinking fountain or water cooler. Stainless steel, push-button activated valve assembly allows for front access stream adjustment as well as cartridge and strainer access. Patent pending flexible design allows for outward drain to be reversed inward allowing drain water to be connected to waste inside of wall.

Model H1119.8

Hi-Lo electric water cooler provides 8 GPH (30.28 LPH) chilled water, stainless steel skin. Features vandal-resistant bubbler heads, waste strainers and bottom plates. Grille slots are designed to eliminate sharp edges and are backed with a foam filter to protect the fan motor and high displacement compressor from debris. Available in 14 or 18-gauge versions.



MODEL H1119.8 SHOWN WITH BOTTLE FILLER MODEL 1920, BACK PLATE MODEL BP32, AND DRIP TRAY MODEL 6469



FEATURES & BENEFITS

- 100% lead-free waterways
- Polished, chrome-plated brass bubbler, push button and waste strainer
- Barrier free
- Front access stream adjustment, cartridge and strainer
- Vandal-resistant components and bottom plates
- Integral waste trap
- 100% U.S.A. factory pressure tested to meet the highest quality standards



Model 1047

Wall-mounted design with child ADA capabilities. Heavy-duty, steel-reinforced construction with pre-cast, air-entrained concrete to ensure 5000+ PSI compressive strength. Hood extension protects the bubbler head with a partial enclosure for a greater protected drinking point. Exposed aggregate finish.

WALL MOUNTED



Model 1025

Barrier-free, heavy-duty 11-gauge fabricated galvanized steel, with green powder-coated finish. Top-down drain access allows for cleaning without taking unit apart. Welded heavy-duty bubbler guard protects the drinking point from misuse. **AVAILABLE IN CUSTOM COLORS**



Model 1431

Two-bubbler, enameled iron, barrier-free fountain provides for bullet-proof durability. Bubbler heads locked to main bowl prevent against vandals and provide efficient water flow for twice the users as single-bubbler fountains.

Model 1501

Barrier-free, Hi-Lo, wall-mounted design with white enameled iron construction. Soft rounded corners prevent mishaps and other accidents that may occur once installed. Matching back panel provides a better base for a sturdier fountain.



Model 1409

Multi-bubbler, barrier-free, white powder-coated cast aluminum construction. Gloss finish resists stains keeping the fountain protected. Three bubbler heads locked to main bowl prevent against vandals and provide efficient water flow in high traffic areas.





FEATURES & BENEFITS

- 100% lead-free waterways
- Barrier free
- Front access stream adjustment, cartridge and strainer
- Vandal-resistant components
- Chrome-plated brass bubbler, push button and waste strainer
- Aesthetically pleasing and protective powder-coated surfaces



Model 3500D

Heavy-duty, 12-gauge stainless steel construction. Hi-Lo, barrier-free design provides for twice the users as regular drinking fountains. Ground level dog fountain allows for pet owners to easily supply their animal with a cool flowing stream of water. Green powder-coat paint finish is standard with nine other powder-coat colors available. Freeze-resistant model (without dog bowl) available, Model 3500.

Models 3377 and 3377BF

Barrier-free, 14-gauge stainless steel fountain with a satin finish stainless steel bowl and bracket, and galvanized steel green powder-coated finish pedestal. Other powder-coat colors available. Freeze-resistant model available, Model 3377FR. Galvanized steel model, 3377G. Bib faucet option available.

Shown with Model 3377BF, bottle filler attachment, a powder-coated, 14-gauge galvanized steel pedestal extension with a satin finish stainless steel bracket, 1 gpm (3.8 L) laminar flow, and front access to valve adjustment and cartridge replacement. Freeze-resistant model available, 3377BFFR. Galvanized, natural steel finish, model 3377BFG.



PEDESTAL :: OUTDOOR



Model 3380

Heavy-duty, 11-gauge, fabricated galvanized steel with powder-coated finish provides exceptional corrosion resistance in one of our toughest made fountains. Standard color is green. Freeze-resistant model available, Model 3380FR.

AVAILABLE IN CUSTOM COLORS

Model 3511

"Antique style" pedestal made of heavy-duty, cast aluminum with powder-coated finish makes for one of the most stylish fountains that *Haws* produces. Standard color is black. Freeze-resistant model available, Model 3511FR. Bib faucet option available.

AVAILABLE IN CUSTOM COLORS

Model 3300

Hi-Lo, barrier-free design. Ready for any environment with heavy-duty, 11-gauge construction, bubbler guards and recessed push buttons. Freeze-resistant model available, Model 3300FR. Bib faucet option available.

AVAILABLE IN CUSTOM COLORS



Model 3202

Angled barrier-free, trough-style design allows the pedestal to be placed securely in multiple locations where a gravel fill is present or can be installed. Gravel fill and trough design completely eliminate the need for traditional drains that can be clogged with sand and other contaminants. Bib faucet option available.

AVAILABLE IN CUSTOM COLORS



Custom Color Selections



BRONZE MIST GREEN YELLOW RED BLUE SILVER BLACK WHITE BROWN ORANGE



FEATURES & BENEFITS

- Heavy-duty, steel-reinforced construction with pre-cast, air-entrained concrete to ensure 5000+ PSI compressive strength, exposed aggregate finish
- Front access stream adjustment, cartridge and strainer
- Vandal-resistant components including recessed push buttons
- Polished, chrome-plated brass bubbler, push button and waste strainer
- Oversize access panels for ease of maintenance
- Attractive, high-polished stainless steel basins
- Top-down access to the drain allows the fountain to be cleaned without taking the unit apart
- Freeze-resistant options



Model **3150**

Adjustable design allows the arm to be mounted at adult or child height as required by ADA. Hood extension protects the bubbler head with a partial enclosure for a greater protected drinking point.

CONCRETE PEDESTAL :: OUTDOOR

Model 3121

Square concrete design with exposed aggregate finish. Hood extension protects the bubbler head for a greater protected drinking point.



Model 3177

Angled barrier-free design with hood extension that protects the bubbler head with a partial enclosure for a greater protected drinking point.



Model 6620

Square concrete step that matches the color and finish of *Haws'* concrete drinking fountains to allow children access to the drinking water stream. Steel-reinforced, pre-cast construction with air-entrained concrete to ensure 5000+ PSI compressive strength with exposed aggregate finish. 10" (25.4 cm) high for surface mounting. Anchor bolts supplied.

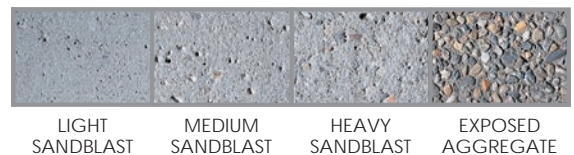


Model 6518FR

Freeze-resistant valve system. Fully-engineered pneumatic-operated valve available for all pedestal fountains. System is installed below the frost line.



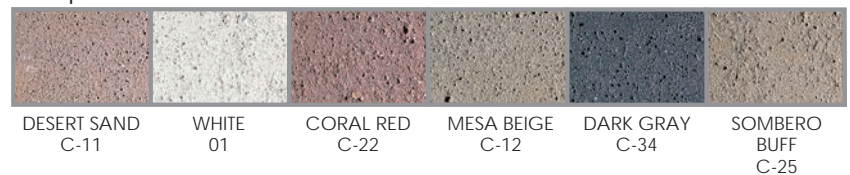
Four Concrete Finishes



Easy to Order

- Go to www.hawsc.com
- Choose the model
- Select one of the four concrete finishes
- Select the concrete color

Sample of Concrete Colors



To view all concrete color options, go to www.hawsc.com

FEATURES & BENEFITS :: SINKS

- Barrier-free
- Stainless steel or enameled iron construction
- Vandal-resistant components

FEATURES & BENEFITS :: FAUCETS

- 100% lead-free waterways
- Polished, chrome-plated brass construction
- Vandal-resistant components



Model 4110ADA

Barrier-free capabilities when mounted at appropriate height. Recessed sink design with water tight fit and stainless steel mounting rim (not shown) helps to minimize excess splashing. Heavy-duty, cast iron basin with a glossy white, acid-resisting enamel finish. Pre-punched to accept two valves and/or faucets. Model shown with optional components.



Model 4010

Ideal for sink or counter-top locations. Push button operated with adjustable stream regulation. Equipped with mounting bracket and waste strainer. Stainless steel bowl and bubbler. Anti-squirt flow prevents surging water, keeping the drinking area contained and clean.

SINK :: COUNTER-TOP MOUNTED



Model 4230

Barrier-free, stainless steel, counter-mounted sink. Sunken sink design helps to minimize excess splashing and self-rimming feature allows for easy mounting, while the stainless steel construction provides durability and corrosion resistance. Stainless satin finish resists stains and corrosion. Water-tight fittings along with sound deadening undercarriage keep this unit mounted securely on any counter-top. Measurements: 31" x 19" x 5" (78.7 cm x 48.3 cm x 12.7 cm) deep. Model shown with optional components.

Model 5054LF

Shielded bubbler and self-closing lever handle valve with pressure regulating flow control to provide an anti-squirt drinking stream. Unit is to be mounted from a sink or counter-top and is constructed from lead-free polished chrome-plated brass, making it resistant to corrosive materials.



Model 5051LF

Shielded bubbler and self-closing lever handle valve with pressure regulating flow control to provide an anti-squirt drinking stream. Unit is to be mounted from a sink or counter-top and is constructed from lead-free polished chrome-plated brass, making it resistant to corrosive materials. Unit has vandal-resistant pins to prevent the unit from turning.



Model 5452LF

Gooseneck faucet is designed with a .5 GPM (1.89 LPM) flow control and self-closing lever handle action. Unit is to be mounted from sink or counter-top and is constructed from lead-free polished chrome-plated brass, making this faucet resistant to corrosive materials.



Model 5530LF

Compression gooseneck faucet is designed with a .5 GPM (1.89 LPM) aerator and stay-open lever handle action to provide a smooth flowing stream of water. Unit is to be mounted from sink or counter top and is constructed from heavy-duty, lead-free, polished chrome-plated brass.



OPTIONAL ACCESSORIES :: COLORS

DRINKING FOUNTAIN MODELS

	1001	1001BP	1011	1011MS	1025	1047	1107L	1109.14	1117L	1311	1409	1431	1501	2000S-2000SMS	3121	3150	3177	3202	3300	3380	3500D	3511	H1011.8	H1011.8HPS	H1117.8	H1119.8
1920	●	●	●	●			●	●	●														●	●	●	●
6250LF														●	●	●	●	●				●				
6423													●													
6426	●	●	●	●	●	●	●	●	●	●	●	●		●	●	●	●	●	●	●	●	●	●	●	●	●
6603	●	●	●																							
6611														●	●	●			●	●	●	●				
6620														●	●											
6635																					●	●				
6700	●	●			●	●	●		●																	
6700.4		●																								
6715													●													
6800	●	●	●		●	●	●	●	●			●														
BP6	●	●																								
BP15	●	●					●	●																		
BP32			●	●					●														●	●	●	●
HCR8	●	●	●	●	●	●	●	●	●	●	●	●	●										●	●	●	●
MTG.3501																					●					
MTGFR.DF2				●																						
MTGFR.LG																							●	●	●	●
SK1																										●
SK3				●																			●			
Concrete Colors					●									●	●	●										
Custom Colors				●														●	●	●	●	●				

COLOR CODES

- Orange indicates a **REQUIRED** Accessory
- Gray indicates an **OPTIONAL** Accessory

ACCESSORIES



Model 5551
Push lever operated, self-closing, polished chrome-plated brass, deck-mounted, gooseneck cold water glass-filler faucet.



Model 6250LF
Self-closing, plain end, lead-free, brass bib faucet with polished chrome-plated finish.



Model 6252EHLF
Self-closing, plain end, bib faucet with rough brass finish and a special extended lever handle which is locked to valve.



Model 6423
Replacement filter for the Hydration Station® sensor-operated bottle filling station. (U.S. and Canada only)



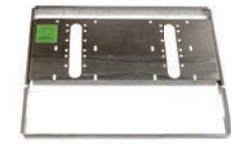
Model 6426
Filter, 12" x 2" (30.5 cm x 5 cm), in-line lead removal element that reduces lead from incoming water supply.



Model 6800
Universal in-wall mounting support for use with most fountains.



Model MTG.3501
Galvanized steel anchors.



Model MTGFR.DF2
In-wall mounting frame provides maximum support and facilitates the installation of 1011MS and 1011HPSMS series fountains.



Model MTGFR.LG
In-wall mounting frame provides the maximum support and facilitates the installation of Hi-Lo, electric water coolers.



Model 5874PB
Lead-free, stainless steel, push-activated, chrome-plated brass push button valve. Includes PBA7 recessed-style, push button assembly.



Model 5874PBF
Flush-mount, lead-free, stainless steel, push-activated, chrome-plated brass, push button valve. Includes PBA6 flush-mount, push button assembly.



Model 6603
Satin finish stainless steel access panel. Includes frame and screws.



Model 6611
Sand trap for installing adjacent to pedestal drinking fountains to help prevent debris and contaminants from clogging waste line. Use Model 6635 for Models 3500 and 3511.



Model 6620
Matching square air-entrained concrete step for square concrete pedestals, 10" (25.4 cm) high.



Model 6469
Drip tray used with the 1920 series bottle fillers for single or dual fountain.



Model HCR8
Chiller provides for instantaneous cooling to meet a continuous demand for chilled water.



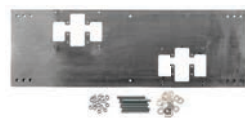
Model SK1
Satin finish stainless steel cane touch skirt for installation on high unit to comply with ADA protruding objects guidelines.



Model SK3
Satin finish stainless steel cane touch skirt for installation on high unit to comply with ADA protruding objects guidelines when needed.



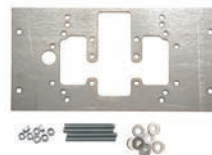
Model 6700
Universal mounting plate for most single bubbler wall-mounted fountains. Panel is 18" W x 7" H (45.7 x 17.8 cm).



Model 6700.4
Hi-Lo universal mounting plate for most dual bubbler wall-mounted fountains. Panel is 36" W x 12" H (91 x 30.5 x).



Model 6700.4L
Mounting plate used with the 1920 series bottle fillers for dual fountain. Panel is 36" W x 7" H (91.4 x 17.8 cm).



Model 6700R
Mounting plate used with the 1920 series bottle fillers for single or dual fountain retrofit installations. Panel is 14" W x 7" H (35.6 x 17.8 cm).



Model 6715
In-wall mounting plate provides the maximum support and facilitates the installation of Hi-Lo, barrier-free, 1501 series fountains. Panel is 36" W x 14" H (91 x 35.6 cm).



Model BP6
Back panel that increases location visibility of fountain and helps protect wall from inadvertent splash. Model BP6 is 15" x 9" (38 cm x 22.9 cm) stainless steel with a satin finish. Used on model 1001.



Model BP15
Satin-finish stainless steel 15-inch back panel for Model 1920. Back panel helps protect wall from inadvertent splash. Back panel is 15" x 17" (38 x 43.2 cm). BP15 and 1920 can be used with 1001 and 1107L models. Available in high-polished stainless steel, Model BP15HPS.

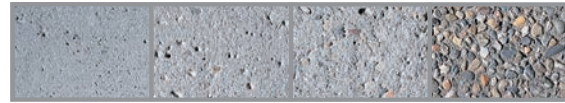


Model BP32
Satin-finish stainless steel 32-inch back panel for Model 1920. Back panel helps protect wall from inadvertent splash. Back panel is 32" x 9.5" (81 x 24 cm). BP32 is to be used with model 1920 and 1011, H1011.8, H1117.8 or 1117L. Available in high-polished stainless steel, Model BP32HPS. Model BP32R has opening on upper left side, no high-polish available.

COLORS :: FINISHES

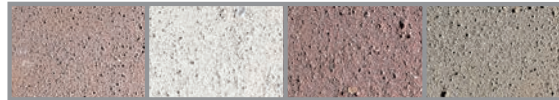
CONCRETE

Four Concrete Finishes

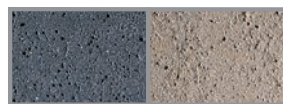


LIGHT SANDBLAST MEDIUM SANDBLAST HEAVY SANDBLAST EXPOSED AGGREGATE

Sample of Concrete Color Options



DESERT SAND C-11 WHITE 01 CORAL RED C-22 MESA BEIGE C-12



DARK GRAY C-34 SOMBERO BUFF C-25

POWDER-COATED STEEL

Custom Color Selections



SILVER BLACK WHITE BROWN ORANGE



BRONZE MIST GREEN YELLOW RED BLUE

SINK MODELS

OPTIONAL ACCESSORIES

	4010	4110ADA	4210	4230
5010.6427SS	●	●	●	
5017LF		●	●	●
5051LF		●	●	●
5054LF		●	●	●
5452LF		●	●	●
5510LF		●	●	●
5530LF		●	●	●
6426	●			
6455		●	●	●
HCR8	●			



Model 5010.6427SS

A polished stainless steel push-button bubbler valve for countertop or sink mounting.



Model 5017LF

All polished chrome-plated sink or counter-mounted drinking faucet with renewable control cartridge.



Model 5051LF

Polished chrome-plated lever handle deck or sink-mounted bubbler valve.

COLOR CODES

- Orange indicates a **REQUIRED** Accessory
- Gray indicates an **OPTIONAL** Accessory



Model 5054LF

Self-closing lever handle, polished chrome-plated brass deck-mounted drinking faucet with automatic stream regulation.



Model 5452LF

Self-closing lever handle, polished chrome-plated brass gooseneck faucet.



Model 5510LF

Stay-open lever handle, polished chrome-plated brass gooseneck faucet.



Model 5530LF

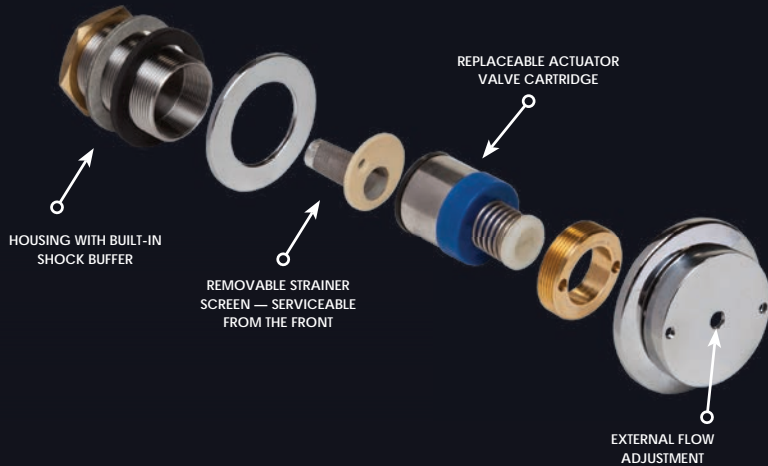
Stay-open hot-and-cold lever handled chrome-plated brass gooseneck faucet.



Model 6455

Polished brass flat waste strainer.

5874PB :: PUSH BUTTON ACTUATION VALVE



All components meet NSF61

The chrome-plated brass, push-button activation valve is lead-free and includes various operation and maintenance functions:

- Integral buffer mechanism that cushions the effects of sudden pressure changes
- Front access for flow height adjustments, cleaning, and cartridge replacement
- Integrated quick connects and mechanically crimped for easier installation, less leak paths and overall extended life.
- Sediment screen built into the valve housing

Model 5874PB is on all non-freeze-resistant Haws drinking fountains and can be retrofitted into existing non freeze-resistant drinking fountains.

Model 5874PBF is the flush-mounted version.

AB1953

AB1953 is encompassed in the California Assembly Bill 1953, enacted in September of 2006, which calls for a reduction in lead content in all plumbing equipment including pipes, fittings, and fixtures to a level less than 0.25%. This law went into effect on the first day of January 2010 and all the aforementioned products sold and installed on and after that date must meet this AB1953 lead reduction requirement. In 1990, Haws was already manufacturing products that fall within the lead reduction requirement that is now in effect.

All Haws drinking fountain products are lead-free, AB1953 compliant, and have NSF/ANSI 61-section 8 or section 9 and NSF/ANSI 372 certifications, obtained through the internationally recognized CSA Testing Laboratory.

CERTIFICATIONS

The CSA and UL certification marks signify that the product meets applicable U.S. and Canadian standards, including those from CSA, ANSI, ASME, ASSE, ASTM, NSF and UL.

Below is a list of certifications that Haws' drinking fountain models and optional accessories have been tested and certified to use. Certifications for each model can be found in the model descriptions at www.hawsc.com.

CSA: Canadian Standard Association International



ASSE: American Society of Sanitary Engineering



UL: Underwriters Laboratories



Water Quality Association: NSF/ANSI 61, ANNEX G, AB 1953



Wheel Chair Accessible products

SPOTLIGHT ON :: SCHOOLS



Model 7620
AXION® eyePOD®



Model 1409
Wall-Mounted
Drinking Fountain



Model 2000S
Wall-Mounted
Filtered Bottle Filler



Model 7541
PERSONAL EYEWASHES
Wall-Mounted Supplemental
Dual Personal Eyewash Station



Model 3377BF
Outdoor Pedestal Drinking
Fountain with Bottle Filler
Extension



Model 5051LF
Shielded bubbler
for deck-mount sink

EMERGENCY PRODUCT SPOTLIGHTS



Model 7620

The AXION® eyePOD® is a faucet-mounted, thermostatically-controlled eyewash that provides facilities with advanced AXION® MSR eyewash capabilities in an attractive, low profile, low cost design. With a single motion, your standard faucet becomes an AXION - *Medically Superior Response*® eyewash, and with another rotation it resets as a faucet.



Model 7501T

Gravity-fed, 9-gallon, tempered portable eyewash that uses a heated, insulated blanket to provide ANSI certified, tempered potable water in ambient operating temperatures from -30°F (-34°C) to 100°F (38°C). Ideal for remote locations without access to a continuous potable water source.

PERSONAL EYEWASH STATIONS

Haws® Personal Emergency Eyewashes are for use when dirt, dust, chemicals, or other contaminants come into contact with the eyes. These personal eyewashes provide immediate flushing fluid while the injured person is en route to a primary emergency station. Reference ANSI Z358.1 Supplemental Equipment/Personal Wash Units (Section 8.1). Offering two sterile liquid options, the DUO eyewash comes in various sizes and mounting options with a pH Neutral and a Saline option.

Model 8300-8309

Combination shower includes the AXION MSR eye/face wash head assembly, and AXION hydrodynamic showerhead design. Zero vertical velocity stream engineering with even laminar flow. Features a round 11" (28 cm) Type 304 stainless steel bowl. Stainless steel push flag and pull rod, mesh in-line eyewash strainer and ball valves with stainless steel ball and stem. Pipe and fitting: 1-1/4" (3.18 cm). Schedule 40 hot-dipped galvanized steel.



Model 7541, DUO sterile pH Neutral solution and sterile Saline solution shown.



HYDRATE FOR HEALTH



US/Canada

Haws HQ • www.hawSCO.com • +1.888.640.4297

Mexico/Central America

Haws HQ • www.hawSCO.com • +1.775.359.4712

South America

Haws Avlis • www.hawsavlis.com.br • +55.11.4813.9977

Asia Pacific

Haws Singapore • www.haws.sg • +65.6367.0359

Haws China • www.haws.sg • +86.510.8522.6533

Haws India • www.hawSCO.in • +91.124.494.2050

Europe/Middle East/Africa

Haws Switzerland • www.haws.ch • +41 (0) 34.420.6000

