

All-Fuel Chimney



Double Wall Stove Pipe



Direct Vent



Triple Wall Chimney



Pellet Vent



# PRODUCT Catalog

2017

HEARTH

 **AMERIVENT<sup>®</sup>**  
Venting Solutions



Thousands of HVAC products ready to ship.



## Residential Vent & Chimney



### Vent:

Standard efficiency b-vent, high efficiency polypropylene, special gas vent for condensing, near-condensing, and non-condensing vent systems. Stock residential diameters and system components available in 3" – 14". Additional sizes available up to 30". Direct vent systems also available. Premium quality materials and designs backed by UL standards.



### Chimney:

All fuel chimney systems for venting wood, coal, oil, or gas. Available in residential diameters 4" – 8". Additional sizes available up to 24". Pellet venting systems for gas, wood pellet, and bio-fuels. Stainless steel inner and outer materials. Variety of installer friendly components backed by UL standards.

### Chimney Liner:

Aluminum and stainless steel. Lengths available up to 50'. Standard diameters available up to 8". Variety of installer friendly components backed by UL standards.



## Grilles, Registers, & Diffusers



A full line for residential and commercial applications. Offered in steel, aluminum and plastic. Many sizes in stock for quick shipment.



## Flexible Air Duct

Flexible air duct systems UL Greenguard Gold certified for residential and commercial applications. Complete line of R-4.2, R-6.0, and R-8.0 available in many outer jacket and core combinations from 3" - 24" diameters and 25' - 50' lengths. Flexible aluminum, duct, duct sleeves and uninsulated flex duct also available.



## Interior Access Doors

Access Doors – High quality and affordable interior access doors for all types of requirements. In stock or custom.



## Roof Top Products

New construction and retrofit drain systems, flashings, expansion joint covers, equipment rails and curbs, duct supports and pipe mounting pedestals. In stock, or made to order.



## Duct Components

Components and accessories for the residential and commercial HVAC and sheet metal industries including flange, rail, corners, hangers & strapping, and duct access doors.



## Filters

A complete line of Multi-Pleat or Commercial & Industrial Disposable panel filters, available in fiberglass and polyester.



## VAV Boxes

The SDV, single duct air terminal, features a primary inlet with an integral damper and a discharge plenum sized to fit standard Hart & Cooley hot water coils.

# TABLE OF CONTENTS

- 4 **Lifetime Warranty**
- 67 **Index**

## TLC ALL-FUEL CHIMNEY

- 5 Technical Information
- 9 Offset Chart
- 6-21 Product Descriptions and Dimensions
- 22 Typical Installations

## MODEL HS / HSS CHIMNEY

- 23-24 Technical Information
- 25 Offset Chart
- 25-34 Product Descriptions and Dimensions
- 35 Chimney Kits
- 36 Installation Information

## DIRECT VENT

- 37 Technical Information
- 39 Offset Chart
- 38-45 Product Descriptions and Dimensions
- 46 Chimney Conversion Kits
- 47 Termination Kits
- 48 Typical Installation

## ULTIMATE PELLET PIPE

- 49 Technical Information
- 50-59 Product Descriptions and Dimensions
- 60 Pellet Pipe Kits

## MODEL DCC DOUBLE WALL STOVE PIPE

- 61 Technical Information
- 63 Offset Chart
- 62-66 Product Descriptions and Dimensions
- 66 Typical Installation

# LIMITED LIFETIME WARRANTY FOR AMERIVENT

## LIMITED LIFETIME WARRANTY

AmeriVent ("we," "us," "our") warrants chimney and venting products to be free from defects in material and workmanship for as long as the original consumer owns the system. For products installed after January 15, 2007, for a period of ten (10) years from original installation, we will provide replacement product with a similar or like quality of available product, free of charge excluding any installation costs. From the eleventh (11th) through fifteenth (15th) years, we will provide replacement product to the original consumer at a cost of 75% off the published retail price in effect on the date the claim is received, excluding any installation costs. At expiration of the fifteen (15) year term, we will provide replacement product to the original consumer at a cost of 50% off the published retail price in effect on the date the claim is received, excluding any installation costs.

## PROFESSIONAL INSTALLATIONS:

If installation is performed by Professional Installers certified in the USA by NFI and CSIA, we will provide replacement product with a similar or like quality of available product, free of charge (excluding any installation costs) for the full Fifteen (15) years from the date of original installation. To be eligible for this additional warranty the consumer must provide a proof of installation by a Professional Installer when submitting a claim.

## LIMITATIONS:

- Products must be installed for their intended purpose.
- Products must be connected to residential appliance listed with an accredited testing laboratory.

WARNING: FAILURE TO INSTALL PRODUCTS ACCORDING TO THE MANUFACTURER'S INSTRUCTIONS WILL VOID ALL APPLICABLE WARRANTIES AND MAY RESULT IN FIRE, CARBON MONOXIDE POISONING OR DEATH. SEE OUR PRODUCT INSTALLATION INSTRUCTIONS FOR COMPLETE INSTRUCTIONS.

## WARRANTY COVERAGE:

All lengths, tees and elbows, and components are applicable to warranty coverage.

## THIS LIMITED WARRANTY DOES NOT COVER:

- (a) any nonstainless base tee unit mounted or connected to an insulated chimney system;
- (b) costs (labor or otherwise\*\*) associated with either removing a previously installed product, installing a replacement product, transportation or return of a product, or transportation of replacement product;
- (c) damage to the finish of products caused by the use of improper solvents/chemicals or improper cleaning methods;
- (d) damage resulting from failure to reasonably clean, care for, or maintain products in accordance with our installation instructions/recommendations;
- (e) damage (to products, appliances or structure) based on or resulting from improper installation or repair, misuse or abuse (including, but not limited to, excessive or improper operating condition), or alteration or adjustment other than in conformity with our installation instructions and specifications, whether performed by a contractor, service company, technician, or yourself;
- (f) any products that have been moved from their original installation site.
- (g) damage caused by burning driftwood, garbage, or any other prohibitive material in the appliance served by the chimney
- (h) damage that results from accidents such as fire, flood, high winds, "acts of God," or any other contingency beyond our control.

**\*\*Due to the wide variance in installation practices and other conditions beyond our control, we do not guarantee or in any way warrant the installation of chimney and venting products.**

## CLAIM PROCEDURE:

If you believe that a product is defective, notify us in writing at the following location.

Hart & Cooley, Inc.  
Attn: Warranty Claims  
5030 Corporate Exchange Blvd. SE  
Grand Rapids, MI 49512

P 800 423 4270      F 800 623 3825

Notification should include a description of the product, model and serial number (if applicable), and a description of the product defect. Upon receipt of a written claim under this limited warranty and evidence of the date of purchase or installation, at our option and in our sole discretion, we will provide replacement product with similar or like quality of available product excluding any installation costs. We reserve the right to inspect or investigate any warranty claims prior to determining whether to provide replacement product. If, as determined by us that repair or replacement of the product is not commercially practicable or cannot be completed in a timely manner, we may refund the prorated purchase price paid for the product upon verification by providing a copy of your invoice or receipt of bill of sale.



**Model TLC All-Fuel Chimney** offers the best in factory-built chimney design by providing superior performance, durability and safety.

**Certification & Applications**



**Model TLC** is safety-tested and listed to applicable UL safety standards for chimneys serving solid-fuel and liquid-fuel appliances. This includes UL 103. This chimney system is designed for use on appliances that use solid, liquid or gas fuels under natural draft conditions.

Allowable flue gas temperatures are:

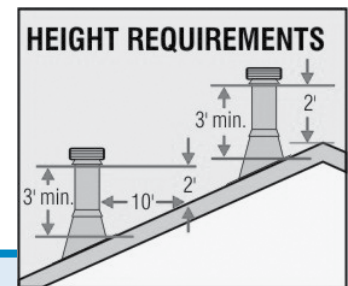
	Type HT 5" to 8"	Non-HT 10" to 14"
Maximum Continuous	1000°F	1000°F
Brief Forced Firing (1 hr)	1400°F	1400°F
Creosote Burn-Out (10min)	2100°F	1700°F

**Enhanced Features**

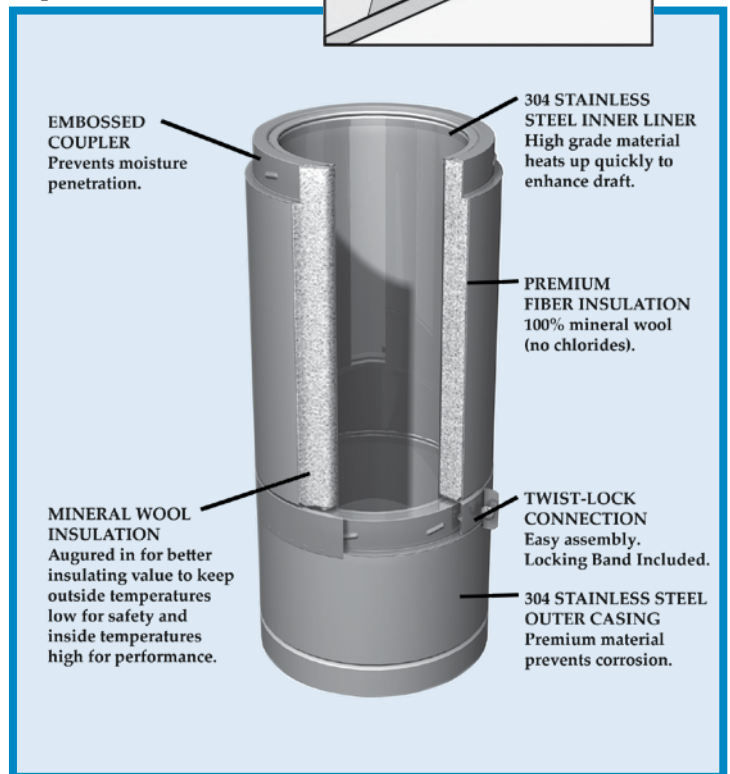
**Model TLC** offers the best in corrosion-resistance. Both the inner liner and outer casings are constructed of 304 stainless steel. Embossed couplers do not allow moisture to penetrate the chimney's outer wall. Sections simply twist-lock together and are easily secured with Locking Bands. The Model TLC product line features deluxe chimney support components that will enhance any installation. Black trims are used to embellish the chimney support component parts that may be installed inside the home.

**Height Requirements**

The chimney must extend at least three feet above the highest point where it passes through the roof surface and at least two feet higher than any part of the building within a horizontal distance of ten feet.



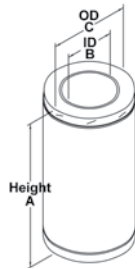
Sizes	5" to 14"
Inner Liner (Flue)	Type 304 Series Stainless Steel 0.016" thickness
Outer Casing	Type 304 Series Stainless Steel 0.015" thickness
Insulation	The 1" space between the inner/outer walls is packed with mineral wool fiber insulation to provide superior insulating qualities in a slim-line design
Airspace Clearance to Combustibles	2"







**CHIMNEY LENGTHS**



**Chimney Lengths**

- Slim, advanced design of the 5" through 8" diameters allow for installation between 16" centers and still provide 2" clearance from combustible material
- Secure twist-lock design couples chimney sections together with just a 1/8 turn
- The included Locking bands secure joints
- 5" - 8" sections overlap by 1 1/8", 10" - 14" sections overlap by 1 1/4"
- Chimneys are sized according to the inner diameter and are available in 5" through 14"
- The outside diameter is 2" larger than the inside diameter

**Stainless Steel Locking Bands**



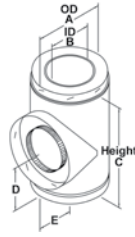
PART #	SIZE	A
5TLCLB	5"	7"
6TLCLB	6"	8"
7TLCLB	7"	9"
8TLCLB	8"	10"
10TLCLB	10"	12"
12TLCLB	12"	14"
14TLCLB	14"	16"

- Locking bands are used at joints for safety and stability
- Locking band flanges engage the curl in each end of the adjoining sections, holding them securely together.

PART #	SIZE	HEIGHT A	INSIDE B	OUTSIDE C
5TLC6	5"	6"	5"	7"
5TLC12	5"	12"	5"	7"
5TLC18	5"	18"	5"	7"
5TLC24	5"	24"	5"	7"
5TLC36	5"	36"	5"	7"
6TLC6	6"	6"	6"	8"
6TLC12	6"	12"	6"	8"
6TLC18	6"	18"	6"	8"
6TLC24	6"	24"	6"	8"
6TLC36	6"	36"	6"	8"
6TLC48	6"	48"	6"	8"
7TLC6	7"	6"	7"	9"
7TLC12	7"	12"	7"	9"
7TLC18	7"	18"	7"	9"
7TLC24	7"	24"	7"	9"
7TLC36	7"	36"	7"	9"
7TLC48	7"	48"	7"	9"
8TLC6	8"	6"	8"	10"
8TLC12	8"	12"	8"	10"
8TLC18	8"	18"	8"	10"
8TLC24	8"	24"	8"	10"
8TLC36	8"	36"	8"	10"
8TLC48	8"	48"	8"	10"
10TLC6	10"	6"	10"	12"
10TLC9	10"	9"	10"	12"
10TLC12	10"	12"	10"	12"
10TLC18	10"	18"	10"	12"
10TLC24	10"	24"	10"	12"
10TLC36	10"	36"	10"	12"
12TLC6	12"	6"	12"	14"
12TLC9	12"	9"	12"	14"
12TLC12	12"	12"	12"	14"
12TLC18	12"	18"	12"	14"
12TLC24	12"	24"	12"	14"
12TLC36	12"	36"	12"	14"
14TLC6	14"	6"	14"	16"
14TLC9	14"	9"	14"	16"
14TLC12	14"	12"	14"	16"
14TLC18	14"	18"	14"	16"
14TLC24	14"	24"	14"	16"
14TLC36	14"	36"	14"	16"



TEE COMPONENTS



**Insulated Tee with Tee Cap**

- Used for through-the-wall installation with a wall support (sold separately)
- A chimney length is required to pass safely through a wall

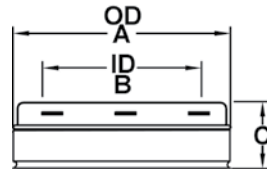
PART #	SIZE	OD-A	ID-B	C	D	E
5TLCT	5"	7"	5"	10 1/2"	5"	5"
6TLCT	6"	8"	6"	11 1/2"	5 5/8"	5 3/4"
7TLCT	7"	9"	7"	12 1/4"	6 1/4"	6 3/16"
8TLCT	8"	10"	8"	13 3/8"	6 5/8"	6 1/2"
10TLCT	10"	12"	10"	16 3/4"	8 3/8"	8 3/8"
12TLCT	12"	14"	12"	18 3/4"	9 3/8"	9 3/8"
14TLCT	14"	16"	14"	20 3/4"	10 3/8"	10 3/8"

**Includes the following:**

One locking band

5" to 8" sizes have an uninsulated (single-wall) twist-lock tee cap.

10" to 14" sizes have an insulated press fit tee cap.



**Insulated Tee Cap**

- Permits typical 2" airspace clearance to combustibles
- 5" to 8" sizes are twist-lock
- 10" to 14" sizes are press-fit design
- 5" to 8" sizes cannot be used with the Adjustable Wall Support

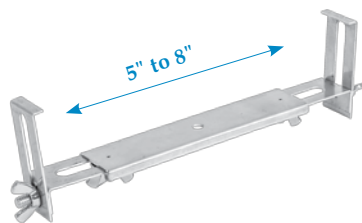
PART #	SIZE	OD A	ID B	C
5TLCITP	5"	7"	5"	2 7/8"
6TLCITP	6"	8"	6"	2 7/8"
7TLCITP	7"	9"	7"	2 7/8"
8TLCITP	8"	10"	8"	2 7/8"
10TLCITP	10"	12"	10"	2 7/8"
12TLCITP	12"	14"	12"	2 7/8"
14TLCITP	14"	16"	14"	2 7/8"



**Non-Twist-Lock Insulated Tee Cap**

- 5" to 8" sizes

PART #	SIZE
5TLCITC	5"
6TLCITC	6"
7TLCITC	7"
8TLCITC	8"



**Universal Tee Cap Retainer**

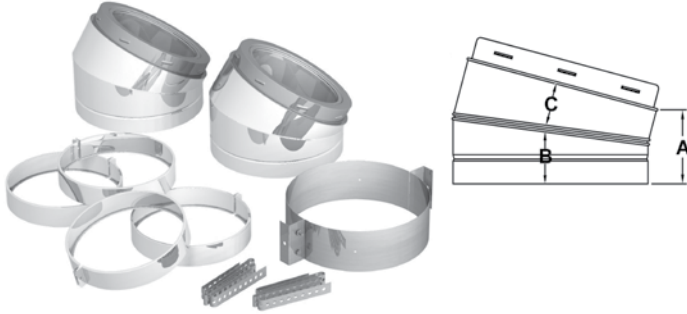
- Secures tee cap on the bottom side of insulated tee
- Adjusts to fit chimney diameters 5"-8"
- Used when support is above insulated tee

PART #	SIZE
TLCTCR	5" - 8"



ELBOWS

PART # SIZE A B C



15° Elbow Kits

5TLCEK15	5"	3 3/8"	2 7/16"	11 5/16"
6TLCEK15	6"	3 3/8"	2 1/2"	2"
7TLCEK15	7"	3 3/8"	2 9/16"	2 1/16"
8TLCEK15	8"	3 3/8"	2 5/8"	2 1/8"
10TLCEK15	10"	2 1/2"	5 1/2"	NA
12TLCEK15	12"	2 1/4"	5 3/4"	NA
14TLCEK15	14"	2"	6"	NA

30° Elbow Kits

5TLCEK30	5"	2 3/4"	2 9/16"	2 9/16"
6TLCEK30	6"	3 1/4"	3 1/16"	2 9/16"
7TLCEK30	7"	3 3/4"	3 7/16"	21 5/16"
8TLCEK30	8"	4 1/4"	3 7/8"	3 3/8"
10TLCEK30	10"	5"	3 7/8"	3 1/2"
12TLCEK30	12"	4"	4 1/4"	4"
14TLCEK30	14"	4 1/4"	4 1/4"	4 1/4"

Elbow kits include:

2 elbows (Exception: 12" and 14" sizes include four 15° elbows assembled into two 30° elbows)

2 locking bands (Exception: 12" 14" sizes include four locking bands)

1 elbow support

All hardware

15° and 30° Elbow Kits

- The insulated elbow is used when offset is required
- Locking bands must be used on all elbows
- A maximum of 6' is allowable between offsets
- Elbow is fully insulated and can be used with the same 2" clearance as chimney lengths
- Elbow support must be used with all offset installations and will support 15' of chimney
- Elbows do not have twist-locking ridges, so they can be rotated to attain optimum positioning and allow chimney to return to correct vertical alignment prior to installing locking bands
- May not be used outdoors

CHIMNEY OFFSET CHARTS

It may be necessary to offset the chimney in order to clear a joist or an obstacle. The Offset Charts will assist you in selecting the proper combination of elbow angle and chimney length(s) that will provide the necessary offset within an available height.

1. Select the column with the proper chimney diameter of your system.
2. Determine the distance of the offset required by dropping a plumb line for an accurate measurement. The offset is measured at the chimney centerline, as per the "A" Offset measurement in the diagram below.
3. On the chart, find the predetermined distance (under the "A" column) required for the 15° elbow. For greater offset, use the 30° offset chart.
4. After finding the offset, look at the "B" (height) measurement in the chart to find the specified height. The appropriate "chimney lengths" required in between elbows is found in the left-hand side column of each chart.

NOTE:

- Model TLC chimneys are limited to offsets not exceeding 30°
- Combining elbows for greater angle is not permitted
- One pair of (two) elbows may be used for interior installation only
- Never install an elbow in a joist area. Chimney sections must pass vertically through framed joist areas.
- Locking Bands must be used at all chimney joints
- Each elbow resupport will support 15' of chimney
- The maximum length of chimney allowed between elbows is 6'



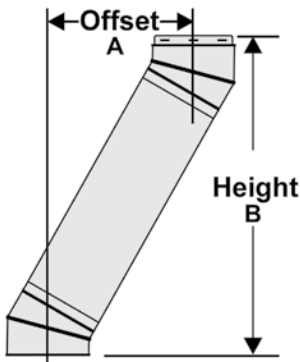


### 15° OFFSET CHART

Chimney Length	5" Diameter		6" Diameter		7" Diameter		8" Diameter		10" Diameter		12" Diameter		14" Diameter	
	A	B	A	B	A	B	A	B	A	B	A	B	A	B
"none"	1 1/2"	9"	1 1/8"	10"	1 1/8"	10 1/4"	1 1/4"	10 3/8"	1 1/4"	9 1/2"	1"	7 3/4"	1"	8 1/4"
6"	2 1/18"	13 1/2"	2 3/8"	14 1/4"	2 3/8"	15"	2 1/2"	15 5/8"	2 3/4"	14"	2 1/4"	12 1/4"	2 1/4"	12 3/4"
12"	4"	19 1/8"	4"	20 1/2"	4 1/16"	20 3/4"	4 1/8"	21"	4"	19 3/4"	3 3/4"	18"	3 3/4"	18 3/4"
18"	5 1/2"	25"	5 1/2"	26 1/4"	5 1/2"	26 1/2"	5 5/8"	26 3/4"	5 1/2"	25 5/8"	5 3/8"	24"	5 3/8"	24 3/8"
24"	7 1/2"	30 1/2"	7"	32"	7 1/16"	32 1/4"	7 1/8"	32 1/2"	7 1/8"	31 3/8"	7"	29 3/4"	7"	30 1/4"
36"	10 1/8"	42"	10 1/4"	43 5/8"	10 1/4"	44"	10 1/4"	44 1/8"	10 1/4"	43"	10"	41 1/4"	10"	41 3/4"
6"+36"	11 1/4"	48 1/4"	11 3/8"	48 3/8"	11 1/2"	48 5/8"	11 1/2"	48 7/8"	11 3/4"	47 1/2"	11 1/4"	45 7/8"	11 1/4"	46 1/4"
12"+36"	12 3/4"	54"	13"	54 1/8"	13"	54 3/8"	13"	54 5/8"	13"	53 1/4"	12 3/4"	51 5/8"	12 3/4"	52 1/4"
18"+36"	14 3/8"	59 3/4"	14 1/2"	60"	14 1/2"	60 1/8"	14 5/8"	60 3/8"	14 1/2"	59 1/8"	14 1/4"	57 1/2"	14 3/8"	57 7/8"
24"+36"	16"	65 1/2"	16 1/8"	65 3/4"	16 1/8"	66"	16 1/8"	66 1/4"	16 1/8"	64 7/8"	15 7/8"	63 1/4"	16"	63 3/4"
12"+24"+36"	19"	76 1/4"	19"	76 1/4"	19"	76 1/2"	19"	76 3/4"	18 7/8"	75 1/8"	18 5/8"	73 5/8"	18 3/4"	74 1/4"
48"	13 5/8"	54 1/8"	13 1/4"	55 1/8"	13 1/4"	55 3/8"	13 3/8"	55 1/2"						

### 30° OFFSET CHART

Chimney Length	5" Diameter		6" Diameter		7" Diameter		8" Diameter		10" Diameter		12" Diameter		14" Diameter	
	A	B	A	B	A	B	A	B	A	B	A	B	A	B
none	3"	10"	2 3/4"	11 5/8"	3 1/8"	13"	3 1/2"	14 1/2"	4"	15 1/4"	4"	14 1/2"	4 1/4"	15 5/8"
6"	5 1/4"	14"	5 1/4"	15 7/8"	5 5/8"	17 1/4"	6"	18 3/8"	6 1/4"	19 1/4"	6 1/4"	18 3/4"	6 1/2"	19 3/4"
12"	9"	19 1/4"	8 1/4"	21"	8 5/8"	22 3/8"	9"	24"	9 1/4"	24 1/2"	9 1/4"	24"	9 1/2"	25"
18"	11 1/4"	24 1/2"	11 1/4"	26 1/4"	11 5/8"	27 5/8"	12"	29 1/8"	12 1/4"	29 3/4"	12 1/4"	29"	12 1/2"	30 1/8"
24"	14 1/4"	29 3/4"	14 1/4"	31 3/8"	14 5/8"	32 7/8"	15"	32 3/8"	15 1/4"	34 3/4"	15 1/4"	34 1/4"	15 1/2"	35 1/4"
36"	20"	39 3/4"	20 1/4"	41 7/8"	20 5/8"	43 1/4"	21"	44 3/4"	21 1/4"	45 1/4"	21 1/4"	44 3/4"	21 1/2"	45 3/4"
6"+36"	21 7/8"	44 1/2"	22 5/8"	46"	23"	47 1/2"	23 1/2"	49"	23 1/2"	49 1/4"	23 3/4"	49"	23 3/4"	49 7/8"
12"+36"	23 7/8"	50 1/8"	25 5/8"	51 1/4"	26"	52 5/8"	26 1/2"	54 1/8"	26 1/2"	54 1/2"	26 3/4"	54 1/4"	26 3/4"	55 1/8"
18"+36"	27 1/8"	55 1/8"	28 5/8"	56 3/8"	29"	57 3/8"	29 1/2"	59 3/8"	29 1/2"	59 3/4"	29 3/4"	59 1/4"	29 3/4"	60 1/4"
24"+36"	30 3/8"	60 5/8"	31 5/8"	61 5/8"	32"	63"	32"	64 1/2"	32 1/2"	64 3/4"	32 1/2"	64 1/2"	32 3/4"	65 3/8"
12"+24"+36"	37"	69 3/8"	37 1/8"	71"	37 1/2"	72 1/2"	38"	74"	37 3/4"	74"	37 3/4"	74"	38"	74 3/4"
48"	26 3/8"	50 1/2"	26 1/8"	52 1/8"	26 1/2"	53 1/2"								

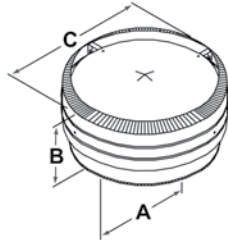


Construction tolerances: +/- 1"

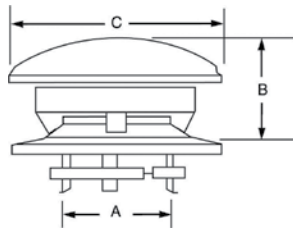


**RAIN CAPS**

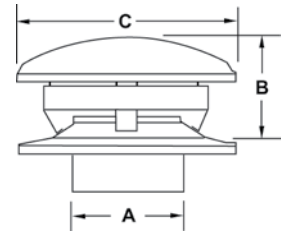
- Protects the system from penetration of rain, debris, birds, and other elements



5" to 8" Model TLCC with Twist-Lock Connection



5" to 8" Model TLCCD with Cinch Band Connection



10" to 14" Model TLCC with Expanding Collar Connection

**5" to 8" Model TLCC w/Twist Lock Connection**

PART #	SIZE	A	B	C
5TLCC	5"	7"	7 1/2"	11 1/4"
6TLCC	6"	8"	7 1/2"	11 1/4"
7TLCC	7"	9"	7 1/2"	13 1/4"
8TLCC	8"	10"	8"	14 1/4"

**5" to 8" Model TLCCD w/Cinch Band Connection**

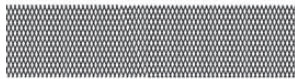
5TLCCD	5"	7"	5"	10"
6TLCCD	6"	8"	5 1/2"	12"
7TLCCD	7"	9"	6 1/4"	14"
8TLCCD	8"	10"	7"	16"

**10" to 14" Model TLCC w/Expanding Collar Connection**

10TLCC	10"	10"	8 1/2"	20"
12TLCC	12"	12"	10"	24"
14TLCC	14"	14"	11 1/2"	28"

**SPARK ARRESTERS**

**PART # SIZE**



Use with TLCC 5" to 14" Caps



Use with Model TLCCD Cap

**For use with 5" to 14" caps**

5TLCSA	5"
6TLCSA	6"
7TLCSA	7"
8TLCSA	8"
10TLCSA	10"
12TLCSA	12"
14TLCSA	14"

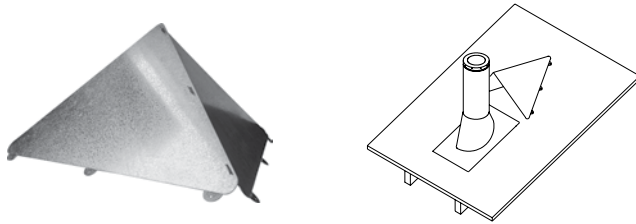
**Fits Model TLCCD Round Top only (5", 6", 7", 8")**

5TLCSAD	5"
6TLCSAD	6"
7TLCSAD	7"
8TLCSAD	8"



**UNIVERSAL SNOW SPLITTER**

PART #	SIZE
TLCSSA	5" to 8"

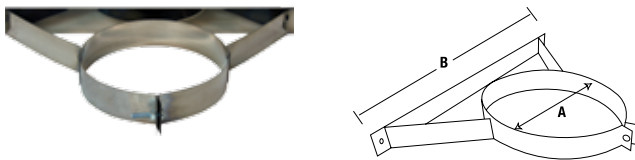


**Universal Snow Splitter**

- Designed to deflect snow and ice
- Prevents unnecessary strain and damage to the chimney
- Mounts directly above the chimney pipe
- Easy panel assembly
- Made from durable heavy gauge galvanized steel
- Non-UL listed component

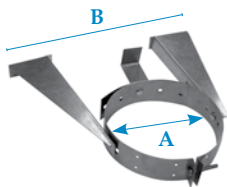
**WALL BANDS**

PART #	SIZE	A	B
5TLCWB	5"	7"	17"
6TLCWB	6"	8"	17"
7TLCWB	7"	9"	17"
8TLCWB	8"	10"	17"
10TLCWB	10"	12"	17"
12TLCWB	12"	14"	18"
14TLCWB	14"	16"	20"



**Wall Band**

- 5" - 14" sizes
- Stainless Steel construction
- Provides lateral support for the chimney when installed adjacent to a wall
- Maintains the mandatory 2" clearance to combustibles



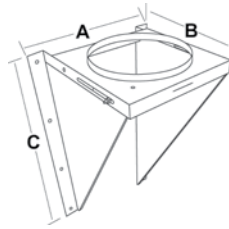
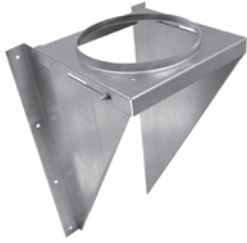
PART #	SIZE	A	B
TLCAWB	5" to 8"	8" to 10"	17"

**Universal Adjustable Wall Band**

- Provides lateral support for the chimney when installed along vertical wall
- Provides more than 4" of horizontal adjustability to clear obstructions
- Required at 8' or closer intervals to stabilize chimney



WALL SUPPORT



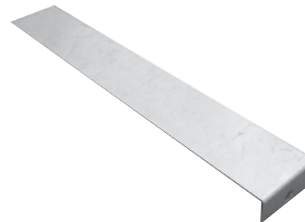
PART #	ADJUSTABILITY	SIZE	A	B	C
5TLCAWS	6"	5"	12"	10 5/8"	18 1/2"
6TLCAWS	6"	6"	12"	10 5/8"	18 1/2"
7TLCAWS	6"	7"	13"	11 5/8"	20 1/2"
8TLCAWS	6"	8"	14"	12 5/8"	21 1/2"
10TLCAWS	6"	10"	16"	14 5/8"	25 1/4"
12TLCAWS	NONADJUSTABLE	12"	19"	16 1/2"	23"
14TLCAWS	NONADJUSTABLE	14"	21"	18 1/2"	27"

Adjustable Wall Support

- Used to support the chimney on a through-the-wall installation
- 2" to 6" clearance away from wall
- 5" to 8" sizes support between 30' and 74' of chimney, based on size and orientation (See instructions for specific heights)
- 10" to 14" sizes support up to 40' of chimney
- 12" to 14" sizes are nonadjustable supports

Includes the following:

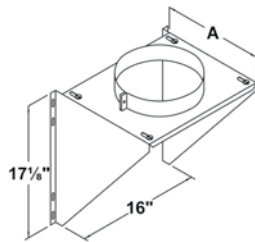
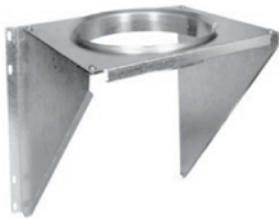
5" to 8" sizes include top plate, side brackets, hardware, non-twist-lock insulated tee cap, and a long L-bracket to hold tee cap in place  
 10" to 14" sizes do not include the cap. Use tee cap packaged with tee.



L-Bracket  
5" to 8" sizes



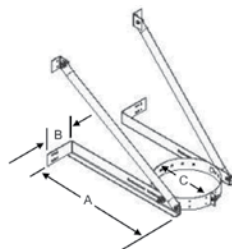
Non-Twist-Lock Insulated Tee Cap  
5" to 8" sizes  
Also sold separately



PART #	SIZE	A
6TLCIWS	6"	11"
7TLCIWS	7"	12"
8TLCIWS	8"	13"

Adjustable Intermediate Wall Support

- Used as supplemental support when chimney system height exceeds maximum height allowed by wall support
- Supports an additional 38' of chimney
- Includes top plate, support band, side brackets, and hardware



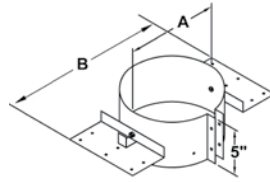
PART #	SIZE	A	B	C
TLCEWS	5"- 8"	22"	5"	7"- 10"

Universal Extended Wall Support

- Designed to support a vertical installation above the insulated tee
- Will support up to 28' of chimney
- Adjusts up to 12" from a vertical wall



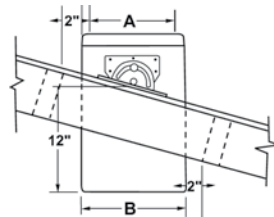
**ROOF SUPPORT**



PART #	SIZE	A	B
5TLCRS	5"	7"	16"
6TLCRS	6"	8"	17"
7TLCRS	7"	9"	18"
8TLCRS	8"	10"	19"

**Adjustable Roof Support**

- The roof support may be used on a roof and adjusts to any roof pitch
- It may be used above an offset to support the offset or as a supplemental support when the chimney height exceeds that of the primary support
- Supports a total of 30' of chimney with up to 20' below support
- Does not act as a firestop

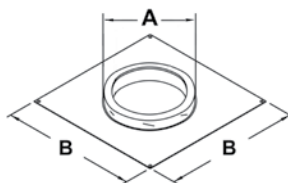
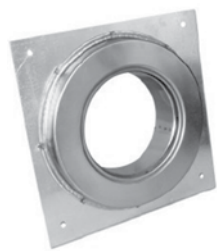


PART #	SIZE	A	B
10TLCRS	10"	10"	12"
12TLCRS	12"	12"	14"
14TLCRS	14"	14"	16"

**Adjustable Roof Support with Pipe**

- Contains one 18" length of pipe with roof brackets preinstalled (Includes hardware)
- Fits all roof pitches
- Mounts easily on top of roof
- Supports a total of 30' with up to 20' below the support
- Does not act as a firestop

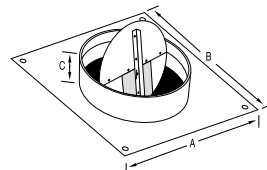
**ANCHOR PLATE**



PART #	SIZE	A	B
5TLCAP	5"	7"	11 5/8"
6TLCAP	6"	8"	11 5/8"
7TLCAP	7"	9"	11 5/8"
8TLCAP	8"	10"	11 5/8"
10TLCAP	10"	12"	13 1/4"
12TLCAP	12"	14"	15 1/4"
14TLCAP	14"	16"	17 1/4"

**Anchor Plate**

- Used on masonry fireplaces and with specifically listed zero-clearance fireplaces for direct connection of all-fuel chimney
- 5" to 8" sizes are 14-gauge galvanized base plate, and 10" to 14" sizes are 10-gauge galvanized base plate
- Coupler and inside wall are premium stainless steel



PART #	SIZE	A	B	C
10TL-APD	10"	16"	16"	5 1/8"
12TL-APD	12"	18"	18"	5 1/8"
14TLC-APD	14"	20"	20"	5 1/8"

**Anchor Plate with Damper**

- Used on a masonry fireplace
- Easy operating, built-in damper
- 6" rope wire for easy operation of damper



ROOF BRACES

PART # SIZE

TLCHDRBK 5" to 8"



Heavy Duty Roof Brace Kit

- Provides lateral stability for the chimney system above the roof line
- Required when the chimney extends 5' or more above the roof
- One kit should be used every 5' of chimney
- Includes telescoping legs that adjust from 5' - 9'
- Support band fits chimney sizes 5" - 8"

CEILING SUPPORTS

PART # SIZE A B C

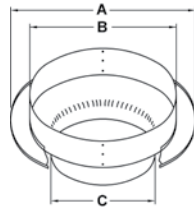
5TLCCSR 5" 16 7/8" 11 3/8" 6 3/7"

6TLCCSR 6" 17 7/8" 12 3/8" 7 3/4"

7TLCCSR 7" 18 7/8" 13 3/8" 8 3/4"

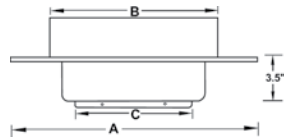
8TLCCSR 8" 19 5/8" 14 3/8" 9 3/4"

10TLCCSR 10" 18 1/2" 16 1/4" 10 1/4"

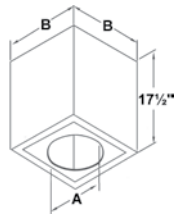
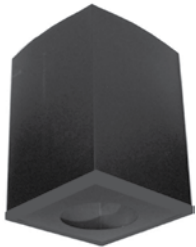


Round Plate Ceiling Support 5" to 8"

- For use in flat ceiling support installations
- Supports a total of 50' of chimney above
- Chimney pipe cannot pass below support
- Matte black finish with ceiling ring to cover rough opening
- Also acts as a firestop
- Must always use stovepipe adapter



Square Plate Ceiling Support 10"



Cathedral Ceiling Support Box

PART # SIZE A B

5TLCCSS 5" 7 1/8" 11"

6TLCCSS 6" 8 1/8" 12"

7TLCCSS 7" 9 1/8" 13"

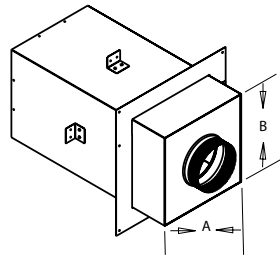
8TLCCSS 8" 10 1/8" 14"

- Used in pitched ceiling support installations
- Supports a total of 38' of chimney with up to 15' below support
- Includes support clamp, allowing chimney pipe to pass below support
- Matte black finish with ceiling trim to cover rough opening
- Also acts as a firestop with use of trim plate
- 12/12 maximum pitch





CEILING SUPPORTS (CONTINUED)



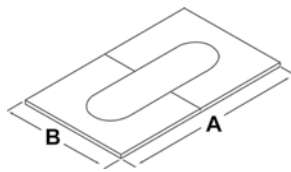
PART #	SIZE	A	B
6TLCCSA	6"	11 19/20"	12 1/50"
7TLCCSA	7"	12 19/20"	13 1/50"
8TLCCSA	8"	13 19/20"	14 1/50"

Includes Box, Adapter, and Brackets



Square Steep Ceiling Support

- Supports up to 20' of Chimney
- Acts as an Attic Insulation Shield
- Designed for installation inside 16" O.C. joists
- Used when installing a chimney in an A-Frame, mobile home, or a narrow roof section



PART #	SIZE	A	B
--------	------	---	---

Flat to 6/12 Pitch

5TLCACP	5"	18" to 29"	15 1/2"
6TLCACP	6"	19" to 30"	16 1/2"
7TLCACP	7"	20" to 31"	17 1/2"
8TLCACP	8"	21" to 33"	18 1/2"
10TLCACP	10"	23" to 37"	20 1/2"
12TLCACP	12"	25" to 41"	22 1/2"
14TLCACP	14"	27" to 45"	24 1/2"

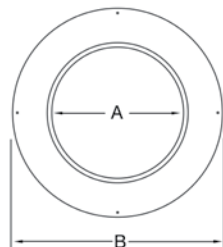
6/12 TO 12/12 Pitch

5TLCACPT	5"	18" to 29"	15 1/2"
6TLCACPT	6"	19" to 30"	16 1/2"
7TLCACPT	7"	20" to 31"	17 1/2"
8TLCACPT	8"	21" to 33"	18 1/2"
10TLCACPT	10"	23" to 37"	20 1/2"
12TLCACPT	12"	25" to 41"	22 1/2"
14TLCACPT	14"	27" to 45"	24 1/2"

Adjustable Ceiling Plate

- Matte black finish
- Adjusts to multiple ceiling pitches
- Covers 2" space around chimney for attractive finish

TRIM COLLAR



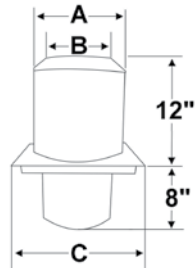
PART #	SIZE	A	B
5TLCTC	5"	7 1/8"	16"
6TLCTC	6"	8 1/8"	16"
7TLCTC	7"	9 1/8"	16"
8TLCTC	8"	10 1/8"	16"

Trim Collar - Matte Black

- Used on wall support installations when passing through a noncombustible wall
- Matte black finish for an enhanced handcrafted appearance



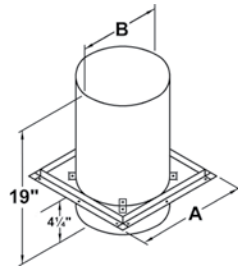
SHIELDS



Attic Insulation Shield

- Must be installed where the chimney enters the attic space
- Designed to keep insulation away from the chimney and to maintain the mandatory 2" clearance to combustibles
- When properly framed, also acts as a firestop
- Not to be used for enclosed chimneys passing through attic. Instead, use firestop radiation shield and rafter radiation shield
- Includes a drop-down joist shield

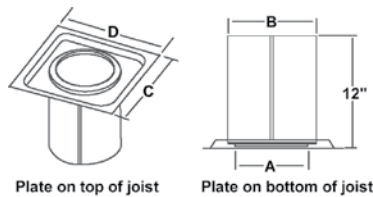
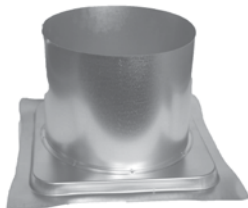
PART #	SIZE	A	B	C
5TLCIS	5"	11"	7 1/8"	13"
6TLCIS	6"	12"	8 1/8"	14"
7TLCIS	7"	13"	9 1/8"	15"
8TLCIS	8"	14"	10 1/8"	16"
10TLCIS	10"	16"	12 1/8"	18"
12TLCIS	12"	18"	14 1/8"	20"
14TLCIS	14"	20"	16 1/8"	22"



Firestop Radiation Shield

- Required where an enclosed chimney passes from a lower living space into an upper living space
- Maintains the mandatory 2" clearance to combustibles

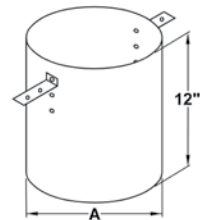
PART #	SIZE	A	B
5TLCFRS	5"	13"	9"
6TLCFRS	6"	14"	10"
7TLCFRS	7"	15"	11"
8TLCFRS	8"	16"	12"



Firestop Joist Shield

- Used in floor/ceiling penetrations, other than those that include a ceiling support
- Not required when passing through roof

PART #	SIZE	A	B	C	D
10TLCFRS	10"	12 1/8"	14"	18"	16"
12TLCFRS	12"	14 1/8"	16"	20"	18"
14TLCFRS	14"	16 1/8"	18"	22"	20"
Can be installed in either orientation					



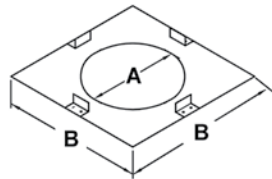
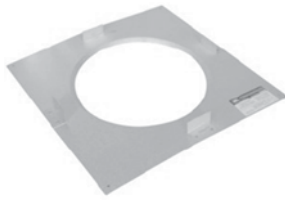
Rafter Radiation Shield

- The rafter radiation shield must be installed immediately below the roof flashing, inside any enclosure

PART #	SIZE	A
5TLCRRS	5"	9"
6TLCRRS	6"	10"
7TLCRRS	7"	11"
8TLCRRS	8"	12"



**SHIELDS (CONTINUED)**

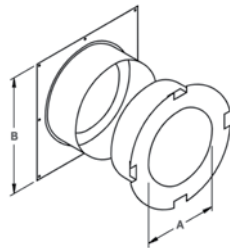


PART #	SIZE	A	B
5TLCSP	5"	7 1/8"	13"
6TLCSP	6"	8 1/8"	14"
7TLCSP	7"	9 1/8"	15"
8TLCSP	8"	10 1/8"	16"

**Soffit Plate**

- Used where the chimney passes through a flat soffit to provide a finished appearance
- Maintains the mandatory 2" clearance to combustibles
- Does not act as a firestop

**WALL THIMBLE**



PART #	SIZE	A	B
5TLCWT	5"	7 1/8"	16"
6TLCWT	6"	8 1/8"	16"
7TLCWT	7"	9 1/8"	16"
8TLCWT	8"	10 1/8"	16"
10TLCWTB	10"	12 1/8"	18"
12TLCWTB	12"	14 1/8"	20"
14TLCWTB	14"z	16 1/8"	24"

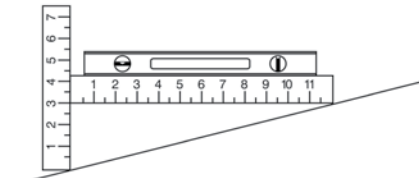
**Wall Thimble - Black**

- Used in a through-the-wall installation
- Radiation shield is included with spacers which keep the shield centered inside the framed opening for 5" to 8"
- Attractive matte black finishing trim plate is included
- Adjustable wall thickness from 4 1/2" to 8 3/4" for 5" to 8" sizes and from 6" to 11" for 10" to 14" sizes



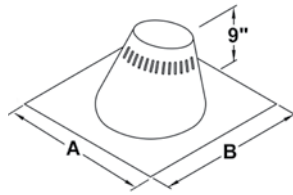
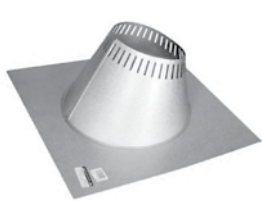
FLASHING

ROOF FLASHING SELECTION CHART



This example shows a 3/12 pitch

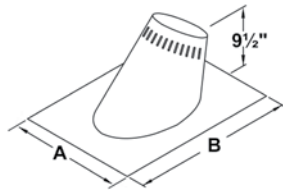
To determine what roof flashing you'll require, you must determine the pitch of the roof. To determine the pitch, you'll need two rulers and a level. Measure the number of inches from the end of the level ruler down to the roof.



Flat to 6/12 Pitch - Adjustable Flashing Assembly

- Used where the chimney passes through a roof with a pitch of Flat to 6/12
- Comes complete with storm collar
- All seams are sealed with silicone sealant
- Galvalume construction

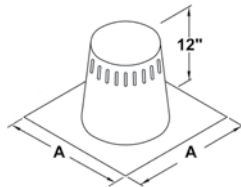
PART #	SIZE	A	B
5TLCF6	5"	24"	24"
6TLCF6	6"	24"	24"
7TLCF6	7"	24"	24"
8TLCF6	8"	27 1/2"	27 1/2"
10TLCF6	10"	27"	31 7/8"
12TLCF6	12"	36"	36 3/8"
14TLCF6	14"	36"	36 3/8"



6/12 to 12/12 Pitch - Adjustable Flashing Assembly

- Used where the chimney passes through a roof with a pitch of 6/12 to 12/12
- Comes complete with storm collar
- All seams are sealed with silicone sealant
- Galvalume construction

PART #	SIZE	A	B
5TLCF12	5"	21 1/2"	30"
6TLCF12	6"	21 1/2"	30"
7TLCF12	7"	21 1/2"	30"
8TLCF12	8"	21 1/2"	30"
10TLCF12	10"	36"	37 1/2"
12TLCF12	12"	36"	40 1/2"
14TLCF12	14"	36"	43 1/2"



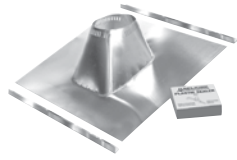
Tall Cone Flashing

- 0/12 to 2/12 pitch
- All seams are sealed with silicone sealant
- Galvalume construction
- Comes complete with storm collar

PART #	SIZE	A
5TLCFF	5"	24" X 24"
6TLCFF	6"	24" X 24"
7TLCFF	7"	24" X 24"
8TLCFF	8"	24" X 24"
10TLCFF	10"	30" X 30"
12TLCFF	12"	32" X 32"
14TLCFF	14"	34" X 34"



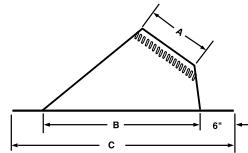
**FLASHING (CONTINUED)**



PART #	SIZE
TLCMRFK	5" - 8"

**Universal Metal Roof Flashing Kit**

- Used in conjunction with a standard TLC flashing
- Flashing sold separately



**Dead Soft Flashing**

- Flashing base designed to be molded to uneven roof surfaces
- Dead soft aluminum base plate
- Storm Collar purchased separately

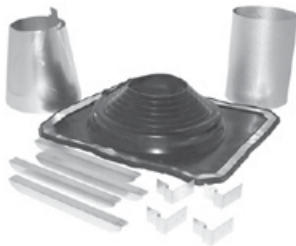
PART #	SIZE	A	B	C
--------	------	---	---	---

**1/12 to 6/12 Dead Soft Flashing**

6TLCDSF6	6"	8 1/8"	16 1/2"	30"
7TLCDSF6	7"	9 1/8"	16 1/2"	30"
8TLCDSF6	8"	10 1/8"	19 7/8"	30"

**6/12 to 12/12 Dead Soft Flashing**

6TLCDSF12	6"	8 1/8"	20"	32"
7TLCDSF12	7"	9 1/8"	20"	32"
8TLCDSF12	8"	10 1/8"	20"	32"



**Rubber Boot Flashing Kit**

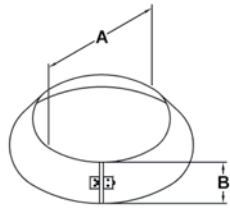
- This kit fits 5", 6", 7" and 8" chimneys
- Used where the chimney passes through a corrugated roof
- 8" Rubber boot flashing fits roof pitches up to 10/12
- 5"-7" Rubber boot flashing fits roof pitches up to 12/12
- UL-listed
- Kit includes: Special Storm Collar, Rubber Boot, Spacer Kit, Special Boot-Mounting Screws

PART #	SIZE
--------	------

TLCRBF	5" - 8"
--------	---------



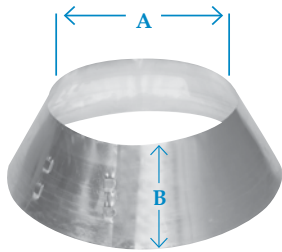
STORM COLLAR



PART #	SIZE	A	B
5TLCSC	5"	7"	4 1/2"
6TLCSC	6"	8"	4 1/2"
7TLCSC	7"	9"	4 1/2"
8TLCSC	8"	10"	4 1/2"
10TLCSC	10"	12"	5 1/2"
12TLCSC	12"	14"	5 1/2"
14TLCSC	14"	16"	5 1/2"

Storm Collar

- Used in conjunction with roof flashing to keep precipitation out



PART #	SIZE	A	B
TLCASC56	5" - 6"	7" - 8"	5 1/2"
TLCASC78	7" - 8"	8" - 10"	5 1/2"

Storm Collar - Adjustable

- Used in conjunction with roof flashing to keep precipitation out



PART #
TLCSS

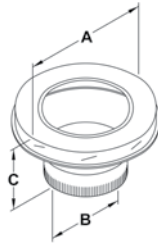
Silicone Sealant for Storm Collars

- Used to seal storm collar to chimney length above cone of flashing
- 3 ounce tube





ADAPTER

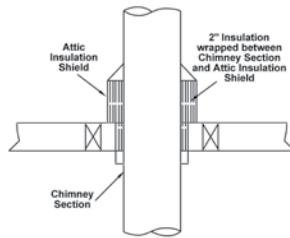


PART #	SIZE	A	B	C
5TLCSPA	5"	7"	5"	5 1/16"
6TLCSPA	6"	8"	6"	5 1/16"
7TLCSPA	7"	9"	7"	5 1/16"
8TLCSPA	8"	10"	8"	5 1/16"
10TLCSPA	10"	12"	10"	3"
12TLCSPA	12"	14"	11"	3"
14TLCSPA	14"	16"	12"	3"

Stovepipe Adapter

- For quick and easy transition from black stovepipe to factory-built chimney
- Twist-lock for easy connection
- 5" to 8" is black
- Stainless Steel

INSULATION



PART #	SIZE
TLCSI	12" X 48" X 2"

Shielding Insulation Wrap

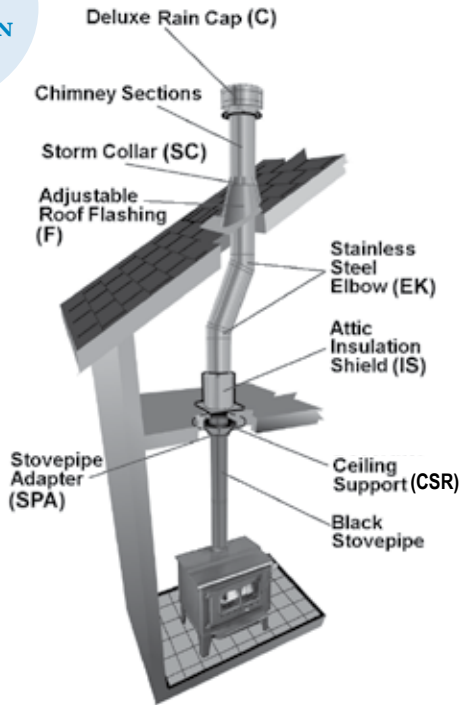
- For use with Attic Insulation Shield, Wall Thimble and Cathedral Ceiling Support Box
- Protects against radiant heat from the chimney
- Helps maintain temperatures within the chimney system and within the housing envelope to prevent condensation on exterior
- UL-listed specifically for TLC chimney



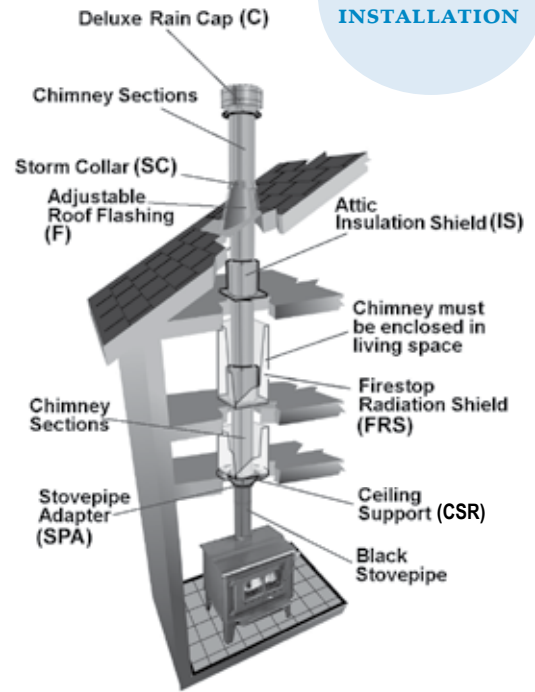
*For better draft & reduced clearances, use the  
**MODEL DCC DOUBLE WALL STOVE PIPE.***

**DECORATOR CEILING SUPPORT INSTALLATIONS**

**ONE-STORY  
INSTALLATION**

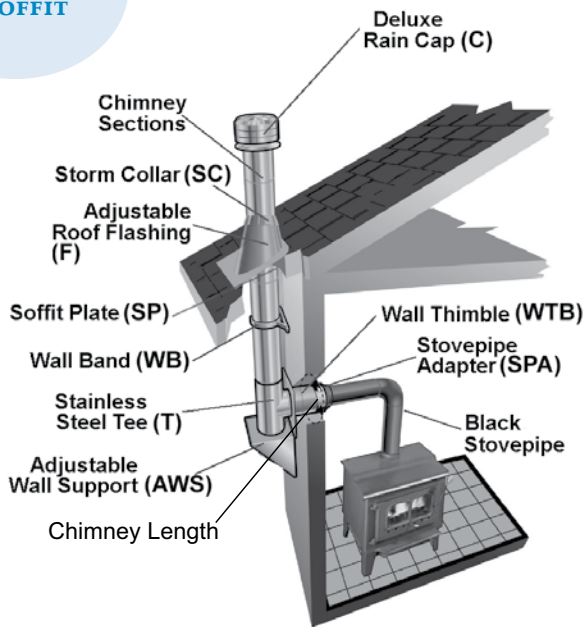


**MULTI-STORY  
INSTALLATION**



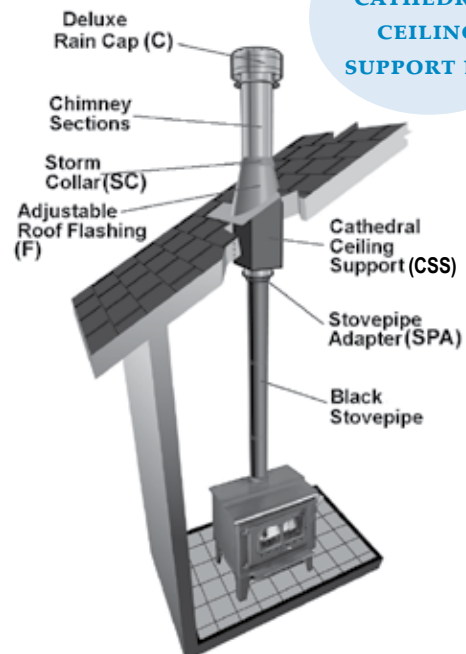
**WALL SUPPORT INSTALLATION**

**THROUGH  
A SOFFIT**



**CATHEDRAL SUPPORT INSTALLATIONS**

**WITH  
CATHEDRAL  
CEILING  
SUPPORT BOX**





**All-Fuel Chimney Model HS Chimney** is listed (UL 103 TYPE HT) for venting flue gases not exceeding 1000°F under continuous operating conditions. In addition, UL has conducted additional tests at 1400°F for one hour and 2100°F for 10 minutes to verify compliance with UL test standards. The Model HS incorporates a design woven ceramic fiber refractory blanket. Surrounded by two inner walls, this asbestos-free blanket has excellent high temperature stability, so it stays in place. It is noncombustible, thin, and lightweight. As a result, the Model HS chimney pipe features the same small outer dimensions and is compatible with our Model FB. It is light enough to be easily installed by one person.



The **Model HS** blanket exhibits superior resistance to high temperature deterioration. Its insulation has proven so effective that it is used as a fire retardant in aircraft, railroad tank cars, chemical facilities, and commercial buildings.



**Model HS** is built to last with a system combining corrosion resistant stainless steel and sturdy galvanized steel. All this adds up to extra protection for your customers through AMP's advanced chimney temperature engineering.

**Model 10FB Chimney** is listed (UL 103) for venting flue gases not exceeding 1000°F under continuous operating conditions. UL has also conducted tests at 1400°F for one hour and 1700°F for 10 minutes to verify compliance with UL test standards.

**Model 10FB** is engineered for venting all gas or liquid-fueled appliances and non-airtight solid-fueled fireplace stoves.

**Pro-Line Chimney Components**

This unique collection of chimney components offers distributors an opportunity to respond to the strong consumer interest in interior design styling. In addition to the standard Model HS chimney components, AMP offers a choice of Pro-Line features, including a square support, a durable black finish, an adjustable roof support, a wide-open design cap, and other components.

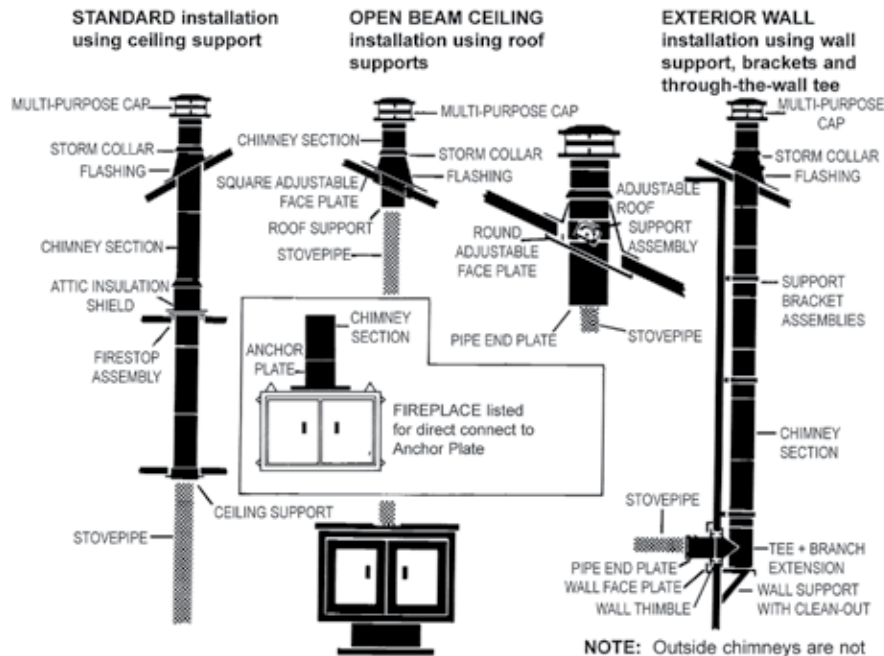
**Specifications and Dimensions**

Usage	The AmeriVent chimney is suitable for use on the following types of appliances:	
	<b>Residential-type Appliances</b>	Ranges, warm air furnaces, water heaters, hot water heating boilers, 15 psig or less steam boilers, floor furnaces, room heaters and fireplace stoves
	<b>Building Heating Appliances</b>	Nonresidential type building heating appliances, steam boilers operating at not over 1000°F flue gas temperature.
	<i>Chimney may also be used where Type B gas vents are permitted</i>	
Available Sizes	(I.D.) 6", 8", and 10"	
Nomenclature	Chimneys, Residential Type and Building Heating Appliance, also known as Type A Chimney and Factory-Built Chimney.	
Approved, Accepted, or Listed by	UL, NFPA, FHA, VA, NBC, UMC, ICBO	

Construction	Model HS/HSS	Model 10FB
Inner Wall	.015" 430 Stainless Steel	.012" 430 Stainless Steel
Insulation	½" Ceramic Fiber Blanket	Air on Air Space
Intermediate Wall	.012" 430 Stainless Steel	.018" Aluminized Steel
Outer Wall	.018" Galvanized Steel (HS) .015" 430 Stainless Steel (HSS)	.018" Galvanized Steel
Temperature Limits	1000°F for continuous operation. Also tested at 1400°F for periods up to one hour and Model HS 2100°F for up to 10 minutes. Model 10FB, 1700°F for up to 10 minutes. <i>(These are standard industry wide limits.)</i>	
Weights per Foot	6" = 4lbs, 8" = 5lbs, 10" = 5 ¾"	
Maximum Height	90' when using Ceiling Supports or Roof Supports. 30' when using Wall Supports and ARSA Adjustable Roof Support Assembly.	
Clearances from Chimney Pipe to Combustibles	Chimney sections (pipe) must be installed with at least a 2" airspace clearance to combustible (including roof construction), except in the support area where clearance is established by installation of the supports.	



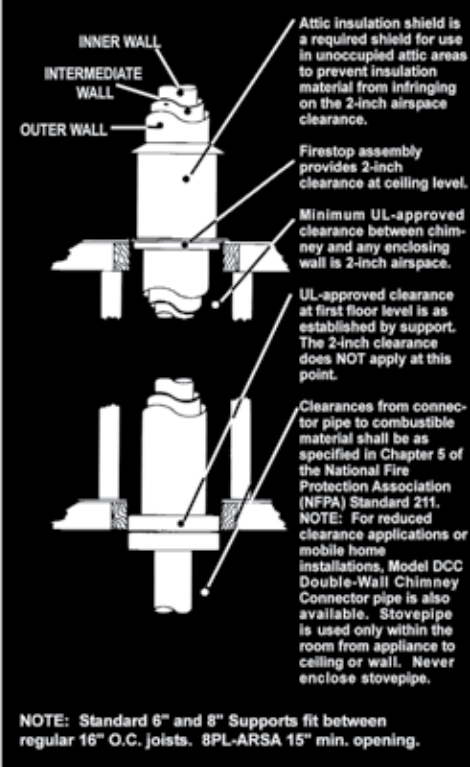
Shown below are the ways to install AmeriVent Pro-Line Chimney Systems.




Chimney must be enclosed where it passes through occupied spaces to maintain required clearances to combustibles and to protect against damage.

NOTE: Outside chimneys are not as desirable, since they are more subject to downdrafts and creosote buildup. An enclosure is highly recommended.

Installation Clearances as Approved by UL



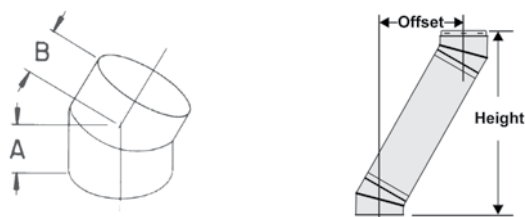


CHIMNEY LENGTHS		PART #	SIZE	ID	OD
 <p><b>Chimney Lengths</b></p> <ul style="list-style-type: none"> <li>Combine corrosion-resistant stainless steel and sturdy galvanized steel for strong chimney construction</li> <li>Lightweight and snap-lock joints offer faster, easier installations</li> <li>Also available with a stainless steel outer wall for corrosive environments, Model HSS</li> <li>Available in lengths: 6", 12", 18", 24", 36", 48"</li> </ul>	6HS-6	6"	6"	9"	
	6HSS-6	6"	6"	9"	
	6HS-12	6"	6"	9"	
	6HSS-12	6"	6"	9"	
	6HS-18	6"	6"	9"	
	6HSS-18	6"	6"	9"	
	6HS-24	6"	6"	9"	
	6HSS-24	6"	6"	9"	
	6HS-36	6"	6"	9"	
	6HSS-36	6"	6"	9"	
	6HS-48	6"	6"	9"	
	6HSS-48	6"	6"	9"	
	8HS-6	8"	8"	11"	
	8HSS-6	8"	8"	11"	
	8HS-12	8"	8"	11"	
	8HSS-12	8"	8"	11"	
	8HS-18	8"	8"	11"	
	8HSS-18	8"	8"	11"	
	8HS-24	8"	8"	11"	
	8HSS-24	8"	8"	11"	
8HS-36	8"	8"	11"		
8HSS-36	8"	8"	11"		
8HS-48	8"	8"	11"		
8HSS-48	8"	8"	11"		
10FB-36	10"	10"	13"		

ELBOWS		PART #	A	B
<b>15° Elbow Set</b>				
	6HS-015	4 3/4"	4 3/8"	
	6HSS-015	4 3/4"	4 3/8"	
8HS-015	5 1/2"	5"		
8HSS-015	5 1/2"	5"		
<b>30° Elbow Set</b>				
6HS-030	4 3/4"	4 3/8"		
6HSS-030	4 3/4"	4 3/8"		
8HS-030	5 1/2"	5"		
8HSS-030	5 1/2"	5"		

**15° and 30° Elbow Set**

- For use in pairs to permit chimney to "go around" joists, rafters or other projections
- Add chimney sections between offsets to produce additional offset
- Elbows are available with a stainless steel outer wall for corrosive environments, Model HSS
- Includes two elbows



**CHIMNEY OFFSET CHART**

Part #	(2) Elbows		(2) Elbows +6" Section		(2) Elbows +12" Section		(2) Elbows +18" Section		(2) Elbows +24" Section		(2) Elbows +36" Section		(2) Elbows +48" Section	
	X	Y	X	Y	X	Y	X	Y	X	Y	X	Y	X	Y
6HS-015	1 3/4"	17 3/7"	3 1/4"	23"	4 3/4"	28 1/4"	6 1/4"	33 1/2"	7 3/4"	38 3/4"	10 3/4"	49 1/4"	13 3/4"	59 3/4"
6HS-030	4"	17"	7"	22 1/4"	10"	27 1/2"	13"	32 3/4"	16"	38"	22"	48 1/2"	28"	59"
8HS-015	2 1/4"	21"	3 3/4"	27"	5 1/4"	30 1/2"	6 3/4"	36 1/2"	8 1/4"	42"	11 1/4"	53 1/2"	14 1/4"	65"
8HS-030	4 1/2"	19 1/2"	7 1/2"	25"	10 1/2"	28 1/2"	13 1/2"	34"	16 1/2"	39"	22 1/2"	49 1/2"	28 1/2"	60"



TEE COMPONENTS



Chimney Tee Assembly

- Consists of a chimney tee, tee branch (made up of one 12" section of chimney), single-wall adapter, pipe end plate, and tee cap
- Use this combination where connection to the chimney is made to the branch of the tee in a through-the-wall installation

Chimney Tee

- Available in a galvanized or stainless steel outer wall

PART #	A	B
<b>Chimney Tee</b>		
6HS-T 6HSS-T	16"	3"
8HS-T 8HSS-T	18"	3"
<b>Chimney Tee Assembly</b>		
6HS-TA 6HSS-TA	16"	3"
8HS-TA 8HSS-TA	18"	3"



Inner Wall Tee Cap

- The pressed-fit cap fits over the bottom end of the inner wall of the Tee

PART #	SIZE
6HS-TCAP	6"
8HS-TCAP	8"



Pro-Line: Outer Wall Insulated Tee Cap

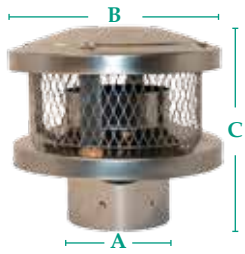
- Screws to the outer wall of the tee, suspended below an Adjustable Roof Support Assembly

PART #	SIZE	A
6PL-ITC	6"	9"
8PL-ITC	8"	11"





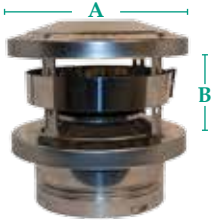
**RAIN CAPS**



Multi-Purpose Cap with Arrestor

PART #	SIZE	A	B	C
6HS-RCS	6"	6"	12"	11 1/4"
7HS-RCS	7"	7"	14"	11 1/4"
8HS-RCS	8"	8"	14"	11 1/4"
10FB-RC w/o Spark Arrestor	10"	10"	23 1/2"	10"

- The durable, all stainless steel constructed cap is designed to minimize downdraft, and features its own spark arrestor/bird debris screen secured to the inside of the pipe



Pro-Line: Multi-Purpose Cap

PART #	SIZE	A	B
6PL-MPC	6"	12"	6"
8PL-MPC	8"	14"	6"

- Features a wide-open design to reduce creosote and a wind band to meet or exceed UL rain test requirements
- Minimizes downdraft
- A spark arrestor is available to comply with local codes
- Locks onto the outside wall of the pipe.

**SPARK ARRESTOR**



PART #	SIZE
6PL-SA	6"
8PL-SA	8"

Pro-Line: Spark Arrestor/Bird Screen

- Designed to fit the Chimney Cap and meets applicable code requirements

**WALL BAND**



PART #	SIZE
6HS-SBA	6"
8HS-SBA	8"
10FB-SBA	10"

Wall Band Assembly



- Used to support chimney pipe offset or to secure outdoor chimney to exterior wall while maintaining the proper 2-inch clearance to wall



WALL SUPPORT

PART # SIZE

6HS-WS 6"

8HS-WS 8"

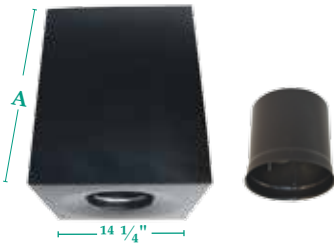


Wall Support

- Supports the chimney tee and chimney
- Attach brackets to wall above or below heavy gauge base plate
- Includes insulated tee cap
- The 2-part plate is secured to the bead at the bottom of the chimney tee

ROOF SUPPORTS

PART # SIZE A MAXIMUM CEILING PITCH



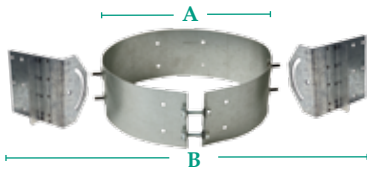
PART #	SIZE	A	MAXIMUM CEILING PITCH	
			Single Wall Connector	Double Wall Connector
6HS-RSA12	6"	18"	0 - 6/12	0 - 10/12
6HS-RSA24	6"	36"	7/12 - 14/12	11/12 - 22/12
8HS-RSA12	8"	18"	0 - 6/12	0 - 10/12
8HS-RSA24	8"	36"	7/12 - 14/12	11/12 - 22/12

Includes: Stainless Steel black single-wall adapter

Trim Plate sold separately

Roof Support Box

- Used for exposed-beam ceiling installations
- Available in a black finish
- Use Ceiling Support Assembly when chimney is to be installed in flat ceiling



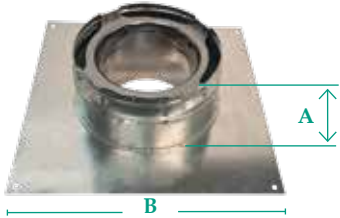
PART #	SIZE	A	B
6PL-ARSA	6"	9"	13"
8PL-ARSA	8"	11"	15"

Pro-Line - Adjustable Roof Support

- Designed for sloped or open-beam ceiling construction in retrofit installations
- Adjusts from flat to 24/12 roof pitches
- Use with the Round Adjustable Face Plate Trim Collar



ANCHOR PLATE



PART #	SIZE	A	B
6HS-AP	6"	4 1/8"	15"
8HS-AP	8"	4 1/8"	15"
10FB-AP	10"	4 1/8"	15"

Anchor Plate

- A starter piece used to support and connect chimney sections to a masonry firebox or an appliance that is specifically listed for direct connection to an Anchor Plate and chimney system

ROOF BRACES



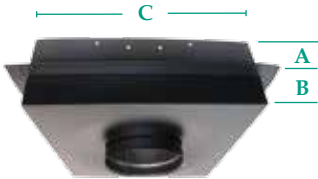
PART #	SIZE	A
6HS-RBK	6"	Adjustable 4 1/2' to 7'
8HS-RBK	8"	Adjustable 4 1/2' to 7'



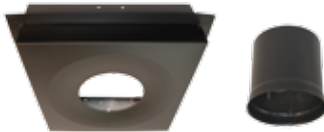
Roof Brace Kit

- Used for tall chimneys or in windy areas to stabilize the chimney above the roof
- Must be used when chimney is 5' or more above the roof

CEILING SUPPORTS



PART #	SIZE	A	B	C
6HS-CSA	6"	3"	2"	14 1/4" sq
8HS-CSA	8"	3"	2"	14 1/4" sq



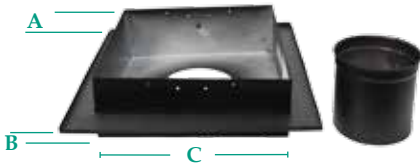
Ceiling Support Assembly

- Used when a chimney is installed in a flat ceiling
- Available in a black finish, the 6" and 8" sizes fit between regular 16" O.C. ceiling joists, and are cartoned with a stainless steel black single-wall adapter
- For open-beam ceiling installations, use Roof Support Assembly



CEILING SUPPORTS (CONTINUED)

PART #	SIZE	A	B	C
6PL-CSS-BK	6"	3"	2"	14 1/4" sq
8PL-CSS-BK	8"	3"	2"	14 1/4" sq

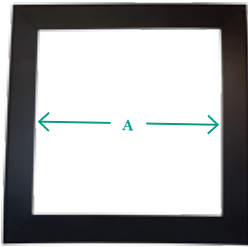


Pro-Line - Ceiling Support Square

- Available in a black finish, the Ceiling Support Square is designed for flat ceiling chimney installations
- Sizes fit between regular 16" O.C. ceiling joists
- Decorative flange eliminates the need for additional trim plate
- Use with single-wall adapter  
(For open-beam ceiling installations, use Roof Support or Adjustable Roof Support Assembly)

TRIM COLLARS

PART #	SIZE	A
HS-CSFP	6" and 8"	14 3/8"



Ceiling Support Trim Collar

- Available in a black finish
- Conceals the rough opening where the support passes through the ceiling
- Optional 1-piece trim plate used to supplement trim around CSA Ceiling Support Assembly



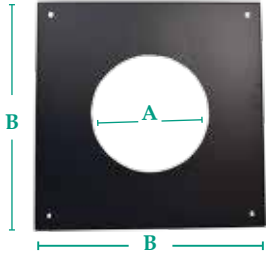
PART #	SIZE	A	B
HS-RSFP	6" and 8"	14 3/8"	18 1/4"

Roof Support Trim Collar

- Standard, flat, 2-piece trim used to cover the rough opening where the HS-RSA passes through the ceiling



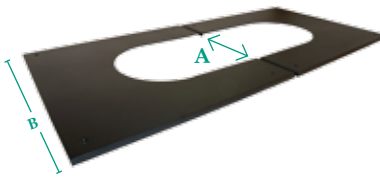
**TRIM COLLARS: PRO-LINE**



PART #	SIZE	A	B	CEILING PITCH
6PL-WFP-BK	6"	9 1/4"	18 1/4"	Flat
8PL-WFP-BK	8"	11 1/4"	18 1/4"	Flat

**Pro-Line: Wall Trim Collar**

- Features a 1-piece trim collar with an attractive 3/8" flange for use with Wall Thimble and on flat ceilings for Adjustable Roof Support Assembly



**Pro-Line: Round Adjustable Trim Collar**

- A black heavy duty 2-piece decorative trim for use with the adjustable roof support assembly and sloped ceilings, fitting up to 24/12 pitch applications



**Pro-Line: Square Adjustable Trim Collar**

- Consists of a two-piece trim collar that conceals a rough opening where the roof support passes through the ceiling
- Available in a black finish

**TRIM COLLARS: PRO-LINE (SLOPED)**

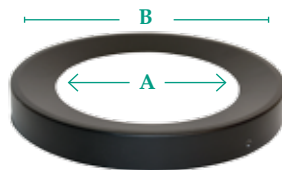
\* must be trimmed to ceilings steeper than 12/12

PART #	SIZE	A	B	CEILING PITCH
6PL-R2FP-BK	6"	9 1/4"	18 1/4"	Flat to 2/12
6PL-R4FP-BK	6"	9 1/4"	18 1/4"	3/12 to 4/12
6PL-R6FP-BK	6"	9 1/4"	18 1/4"	5/12 to 6/12
6PL-R8FP-BK	6"	9 1/4"	18 1/4"	7/12 to 11/12
* 6PL-R12FP-BK	6"	9 1/4"	18 1/4"	11/12 to 24/12
8PL-R2FP-BK	8"	11 1/4"	18 1/4"	Flat to 2/12
* 8PL-R12FP-BK	8"	11 1/4"	18 1/4"	11/12 to 24/12

**TRIM COLLARS: PRO-LINE (SLOPED)**

PART #	SIZE	A	B	CEILING PITCH
PL-SAFP-BK	6", 8"	14 3/8"	18 1/4"	Flat to 24/12

**PLATES**



Stove pipe sold separately

PART #	SIZE	A	B
6HS-EP	6"	6 1/16"	9 1/8"
8HS-EP	8"	8 1/16"	11 1/8"

**Pipe End Plate**

- Used in conjunction with the single-wall adapter to close off the end of the HS/HSS chimney pipe and provide conversion to black stove pipe in through-the-wall and adjustable-roof-support installations



PLATES (CONTINUED)

PART # SIZE

6PL-EPI 6"

8PL-EPI 8"



Pro-Line: Insulated End Plate

- An insulation donut used inside the End Plate and around the SWA to prevent wet, warm air from getting inside the walls of the chimney on adjustable roof supports installations



PART # SIZE ZA

6PL-TS12-BK 6" 12"

6PL-TS48-BK 6" 48"

8PL-TS12-BK 8" 12"

8PL-TS48-BK 8" 48"

Pro-Line: Trim Sleeve

- Provides an attractive transition from black stovepipe to HS/HSS chimney in a cathedral ceiling

STORM COLLARS

PART # SIZE

6SC 6"

8SC 8"

10SC 10"



Storm Collar

- Used with flashings to ensure a watertight installation



PART # SIZE A

PL-ASCWG 6", 8" 3 1/2" Galvanized

PL-ASCWA 6", 8" 3 1/2" Aluminum

Pro-Line: Storm Collar Adjustable

- The multiple-size Adjustable Storm Collar fits both 6" and 8" chimney pipe, and is available in galvanized (ASCWG) and aluminum (ASCWA)
- Use ASCWG with galvanized flashings and the ASCWA with Aluminum flashings



**SHIELDS**

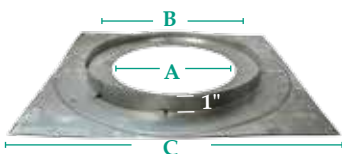


**Attic Insulation Shield**

- Required in unoccupied attic areas to prevent insulation material from infringing on the 2" airspace clearance

PART #	SIZE	A	B
6HS-AIS	6"	9"	18"
8HS-AIS	8"	11"	18"

Includes Storm Collar



**Firestop Assembly**

- Required at each floor level, except at ceiling support or roof support, in order to provide correct spacing to combustible materials as the chimney passes through a combustible floor

PART #	SIZE	A	B	C
6HS-FSA	6"	9"	13"	18"
8HS-FSA	8"	11"	15"	18"

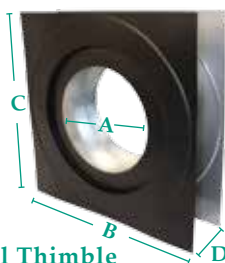


**Firestop Joist Shield**

- Used when installing an 8" chimney in a 16" O.C. joist construction
- Provides UL-approved clearance between the chimney and the joist
- Also serves as a firestop

PART #	SIZE	A	B
8HS-JS	8"	36"	14 1/4"

**WALL THIMBLE**



**Wall Thimble**

- Used with a tee branch and chimney section to provide proper clearance to combustible materials
- The black painted surface for an interior wall eliminates the need for a trim plate

PART #	SIZE	A	B	C	D
6HS-WTP	6"	9"	13"	18"	Adj from 4 1/2" to 8"
8HS-WTP	8"	11"	15"	18"	Adj from 4 1/2" to 8"





**FLASHING**

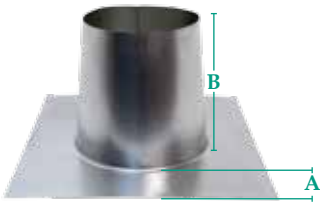


**Round Flashing Galvanized - 6FFU12**



**Round Flashing Aluminum - 6PL-AFFU12**

- Available in galvanized and aluminum models flat to 6/12 pitch (Standard), as well as for steeper pitches of 7/12 to 12/12, 13/12 to 18/12, and 19/12 to 24/12.



**Tall Cone Flashing**

- Used for flat to 1/12 pitch roofs, as well as on flat roofs in snowpack areas to reduce chances of leakage

PART #	SIZE	PITCH	(A) SKIRT	METAL
6F 6PL-AF	6"	Std. Flat to 6/12	4"	Galvanized Aluminum
8F 8PL-AF	8"	Std. Flat to 6/12	4"	Galvanized Aluminum
6FFU 6PL-AFFU	6"	Flat to 6/12	6"	Galvanized Aluminum
8FFU 8PL-AFFU	8"	Flat to 6/12	6"	Galvanized Aluminum
6FFU12 6PL-AFFU12	6"	7/12 to 12/12	6"	Galvanized Aluminum
8FFU12 8PL-AFFU12	8"	7/12 to 12/12	6"	Galvanized Aluminum
6FFU18 6PL-AFFU18	6"	13/12 to 18/12	6"	Galvanized Aluminum
8FFU-18 8PL-AFFU18	8"	13/12 to 18/12	6"	Galvanized Aluminum
6FFU24 6PL-AFFU24	6"	19/12 to 24/12	6"	Galvanized Aluminum
8FFU24 8PL-AFFU24	8"	19/12 to 24/12	6"	Galvanized Aluminum

PART #	SIZE	A	B
6FT	6"	4" on 4 sides	12"
8FT	8"	4" on 4 sides	12"
10FT	10"	4" on 4 sides	12"

**ADAPTER**



**Stove Pipe Adapter**

- Included in a ceiling support assembly, roof support assembly, and tee assembly for easier installation of single-wall connector pipe

PART #	SIZE
6SWA	6"
8SWA	8"



CHIMNEY KITS

CEILING  
SUPPORT  
KIT



PART #

6HS-RKS

8HS-RKS

Kit Contains:

- 1 - Stainless Steel Rain Cap
- 1 - Flat to 6/12 pitch Flashing
- 1 - Storm Collar
- 1 - Ceiling Support
- 1 - Stove Pipe Adapter

CATHEDRAL  
SUPPORT  
KIT



PART #

6HS-RKRS

8HS-RKRS

Kit Contains:

- 1 - Stainless Steel Rain Cap
- 1 - Flat to 6/12 pitch Flashing
- 1 - Storm Collar
- 1 - Tall Roof Support (18")
- 1 - Stove Pipe Adapter

THROUGH  
THE WALL  
KIT



PART #

6HS-TWK

6HSS-TWK

8HS-TWK

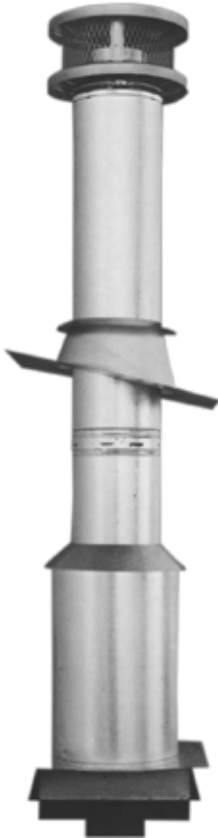
8HSS-TWK

Kit Contains:

- 1 - Stainless Steel Rain Cap
- 1 - Tee Assembly
- 1 - Flat to 6/12 Flashing
- 1 - Storm Collar
- 1 - Wall Support
- 1 - Painted Wall Thimble
- 3 - Support Bracket Assemblies



**INSTALLATION INFORMATION**

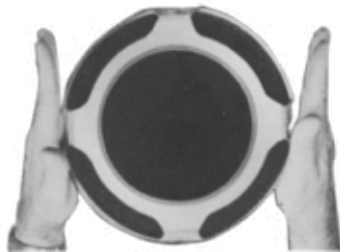


**UL 103 HT 2100° F**  
Models 6 and 8 HS feature a ceramic fiber refractory blanket to withstand intermittent temperatures up to 2100°F, as called for in UL 103 HT Standard



**UL 103 1700° F**  
Model 10FB is a triple-wall, air-insulated chimney designed to withstand intermittent temperatures up to 1700°F, as called for in UL 103 Standard

**LIGHTWEIGHT:** Lightweight chimney makes for a fast, easy one-man installation. A minimum 2" airspace clearance to combustibles is required.



**SMALL ODs:** The small ODs let you install this compact prefabricated chimney in less space. The outside diameters are only 3" larger than inside diameters.

**SNAP-LOCK DESIGN:** The proven snap-lock coupling system goes together fast - and keeps this chimney rigid and trouble-free. No cement, screws, or straps are needed. The system is easy to connect in tight spots.





**Direct Vent** provides a complete line of components for all typical installations, both vertical and horizontal. The factory-assembled construction of Direct Vent is unique, having a galvanized steel outer wall and superior corrosion-resistant stainless steel inner wall. Direct Vent fits most existing start collars.



The inner-wall, factory-installed graphite gasket makes for easy, secure twist-lock installation. The 360° rotation allows elbows and straight pipe to rotate in either direction, while still maintaining the secure lock system.

**Specifications and Dimensions**

<b>Usage</b>	For venting direct vent gas appliances listed or certified for use with AmeriVent Direct Vent. For information on venting gas appliances having draft hoods and other appliances listed to be used with Type B Gas Vent, request our Type B Gas Vent Catalog. For information on venting unlisted gas appliances or appliances burning solid or liquid fuels, request our TLC Chimney Catalog.
<b>Material</b>	<b>Inner Pipe:</b> Type 430 Stainless Steel <b>Outer Pipe:</b> Galvanized Steel
<b>Clearances</b>	Refer to the appliance manufacturer’s installation instructions for minimum clearances to combustibles.
<b>Approved, Accepted, or Listed by</b>	CSA, ITS, OMNI, UL

Pipe Size	Inner Thickness	Outer Thickness
Nominal 4" ID X 6 5/8" OD	.012"	.018"
Nominal 5" ID X 8" OD	.012"	.018"

Available Lengths: 7", 12", 24", 36", 48"



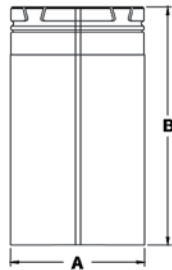
LENGTHS



Lengths

- Twist-lock joints offer fast installations
- Factory-installed inner gasket ensures a leak-free joint
- Co-axial tube construction with a stainless steel inner wall and a galvanized steel outer wall, separated by two spacers
- 1 1/4" overlap at joints

PART #	FINISH	LENGTH	SIZE	ID	OD
4D7 4D7B	Black	7"	4" X 6 5/8"	4"	6 5/8"
4D12 4D12B	Black	12"	4" X 6 5/8"	4"	6 5/8"
4D2 4D2B	Black	24"	4" X 6 5/8"	4"	6 5/8"
4D3 4D3B	Black	36"	4" X 6 5/8"	4"	6 5/8"
4D4 4D4B	Black	48"	4" X 6 5/8"	4"	6 5/8"
5D7 5D7B	Black	7"	5" X 8"	5"	8"
5D12 5D12B	Black	12"	5" X 8"	5"	8"
5D2 5D2B	Black	24"	5" X 8"	5"	8"
5D3 5D3B	Black	36"	5" X 8"	5"	8"
5D4 5D4B	Black	48"	5" X 8"	5"	8"



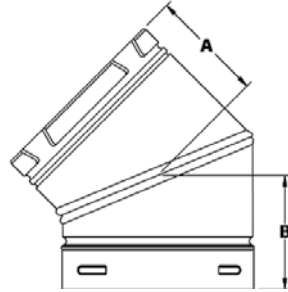
Adjustable Lengths

- Telescopes onto standard pipe sections for adjustments
- Includes stainless steel self-tapping screws

PART #	FINISH	ADJ. LENGTH	SIZE	A	B
4D7A 4D7AB	Black	3" to 5"	4" X 6 5/8"	6 11/16"	7"
4D12A 4D12AB	Black	3" to 10"	4" X 6 5/8"	6 11/16"	12"
4D16A 4D16AB	Black	3" to 14"	4" X 6 5/8"	6 11/16"	16"
4D26A 4D26AB	Black	3" to 24"	4" X 6 5/8"	6 11/16"	26"
5D7A 5D7AB	Black	3" to 5"	5" X 8"	8 1/8"	7"
5D12A 5D12AB	Black	3" to 10"	5" X 8"	8 1/8"	12"
5D16A 5D16AB	Black	3" to 14"	5" X 8"	8 1/8"	16"
5D26A 5D26AB	Black	3" to 24"	5" X 8"	8 1/8"	26"



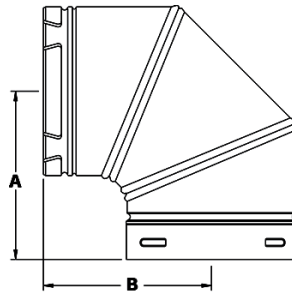
ELBOWS



PART #	FINISH	SIZE	A	B
4D45L 4D45LB	Black	4" X 6 5/8"	4 1/2"	4 1/2"
5D45L 5D45LB	Black	5" X 8"	4 3/4"	4 3/4"

45° Elbow

- Use with 45° fireplace adapters or in pairs to go around obstructions
- Add pipe sections between elbows for additional offset



PART #	FINISH	SIZE	A	B
4D90L 4D90LB	Black	4" X 6 5/8"	6 11/16"	6 9/16"
5D90L 5D90LB	Black	5" X 8"	7 1/2"	7 5/32"

90° Elbow

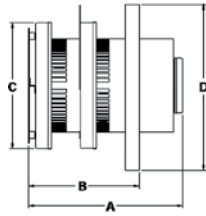
- Three-section design provides smooth, low resistant 90° offset

45° OFFSET CHART

PIPE LENGTH	4" X 6 5/8"		5" X 8"	
	X - RUN	Y - RUN	X - RUN	Y - RUN
two 45°s only	6"	14 1/8"	5 3/4"	15 3/16"
7"	9 3/16"	18 3/16"	9 1/2"	19"
12"	12 3/4"	21 3/4"	13"	22 1/2"
24"	21 1/4"	30 1/4"	21 1/2"	31"
36"	29 11/16"	38 11/16"	30"	39 1/2"
48"	38 3/16"	47 3/16"	38 1/2"	48"



RAIN CAPS



Round Horizontal Cap

- For horizontal venting applications
- Corrosion-resistant construction with stainless steel inner wall
- Low-restriction design improves efficiency and minimizes wall temperature

NOTE: Vinyl siding Standoff (DVSK) is required where applied to vinyl siding (sold separately), assembly required.

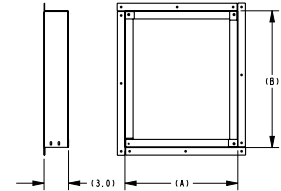
PART #	SIZE	A	B	C	D
--------	------	---	---	---	---

Round Horizontal Cap

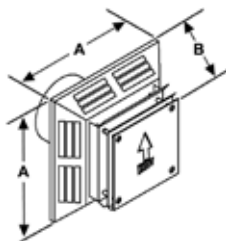
4DHC	4" X 6 5/8"	11"	8"	9 1/4"	12"
5DHC	5" X 8"	13"	8 1/2"	11"	14 1/4"

Vinyl Siding Stand-off

4DVSK	4"	11 9/10"	11 9/10"	---	---
5DVSK	5"	14 1/10"	17 1/10"	---	---



Vinyl Siding Stand-off (DVSK)



Square Horizontal Cap

- For horizontal venting applications
- Sleek, low profile design

NOTE: Vinyl siding Standoff (DHVS) is required where applied to vinyl siding (sold separately).

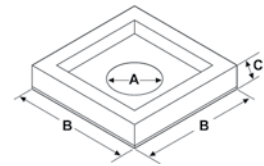
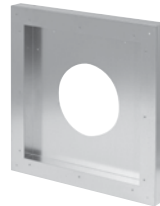
PART #	SIZE	A	B	C
--------	------	---	---	---

Square Horizontal Cap

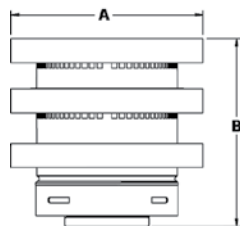
4DHCS	4" X 6 5/8"	13 1/2"	7"	---
5DHCS	5" X 8"	16"	7"	---

Vinyl Siding Shield

4DHVS	4" X 6 5/8"	6 5/8"	17 3/8"	2"
5DHVS	5" X 8"	8 1/4"	19 7/8"	2"



Vinyl Siding Shield (DHVS)



Vertical Cap

- For vertical venting applications
- Corrosion resistant construction with stainless steel inner wall
- Low-restriction design improves efficiency

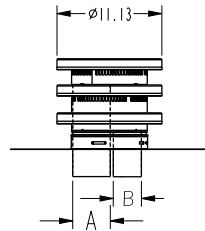
PART #	SIZE	A	B
--------	------	---	---

4DVC	4" X 6 5/8"	9 1/4"	9"
5DVC	5" X 8"	11 1/4"	9 1/2"





COLLINEARS



Integrated Collinear Cap and Direct Vent Liner Kit

- Integrated fresh air/flue connections
- No adapter required
- 16" x 16" flashing base

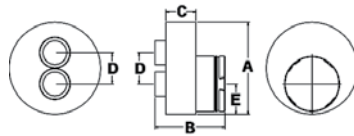
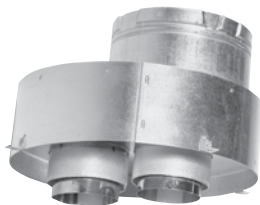
PART #	SIZE	A	B
--------	------	---	---

Collinear Cap

DVCC33	3" / 3"	3"	3"
DVCC43	4" / 3"	4"	3"

35ft Liner Kit

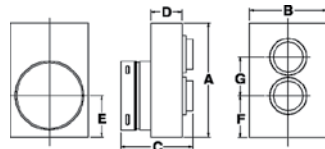
DVIK33	3" / 3"	includes two <sup>35'</sup> lengths of aluminum flexible pipe	
DVIK43	4" / 3"	includes two <sup>35'</sup> lengths of aluminum flexible pipe	



Collinear Connectors: Top Kit

- Use at top of existing chimney to convert Collinear tubes to Co-axial AmeriVent Direct Vent
- Flashing is included

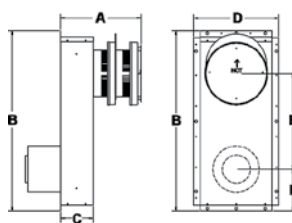
PART #	SIZE	A	B	C	D - DIA	E - DIA
4DCAT33	4" X 6 5/8"	11"	9"	4"	3"	3"
4DCAT43	4" X 6 5/8"	11"	9"	4"	3"	4"



Collinear Connectors: Appliance Adapter

- Use at appliance for connecting from Co-axial start collars to a pair of Collinear tubes passing through existing chimneys

PART #	SIZE	A	B	C	D	E-DIA	F-DIA
4DCAB33	4" X 6 5/8"	11"	7 1/2"	7 1/2"	3"	3"	3"
4DCAB43	4" X 6 5/8"	11"	7 1/2"	7 1/2"	3"	3"	4"



Snorkel Cap

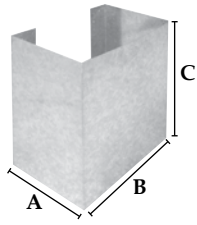
- Use for horizontal vent installations that require a vertical rise on the exterior of the building
- Corrosion-resistant construction with stainless steel inner wall
- Low-restriction design improves efficiency and minimizes wall temperature

PART #	SIZE	A	B	C	D	E	F
4D14S	4" X 6 5/8"	12"	26 1/2"	4 3/4"	12 1/2"	14"	6 1/4"
4D36S	4" X 6 5/8"	12"	48 1/2"	4 3/4"	12 1/2"	36"	6 1/4"
5D14S	5" X 8"	14 1/2"	26 1/2"	6 1/2"	14 1/4"	14"	6 1/4"
5D36S	5" X 8"	14 1/2"	48"	6 1/2"	14 1/4"	36"	6 1/4"



WIND SCREEN / COVER

PART #	A	B	C
4DHWS	9"	13 1/4"	14 3/4"

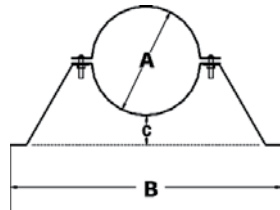


Wind Screen / Cover

- Added protection in high-wind areas
- Installs directly on the base - no additional holes required
- Wind screen for Horizontal Cap; works for 4" or 5" caps
- Galvanized steel can be painted to match home exterior
- Non-UL listed

WALL BAND

PART #	A	B	C
4DWS	6 5/8"	15 1/2"	2"
5DWS	8"	18"	2"

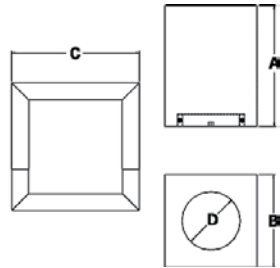
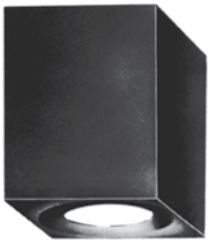


Wall Band

- Provides lateral support for vent and offsets, while maintaining clearance from the wall

CEILING SUPPORT

PART #	A	B	C	D
4DRSB	14"	11 3/8"	15 3/8"	6 3/4"
5DRSB	14"	11 3/8"	15 3/8"	8 1/8"

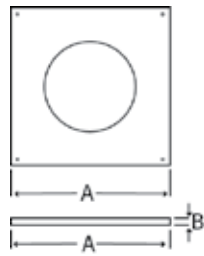
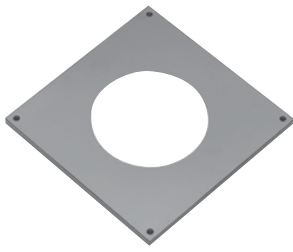


Cathedral Ceiling Support

- Use as support and firestop in cathedral ceiling installations
- Fits from flat to 12/12 pitch ceilings
- Use the included trim plate to conceal rough opening
- Painted Black



TRIM COLLAR

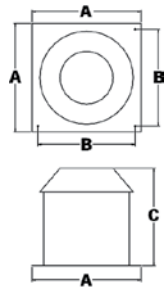
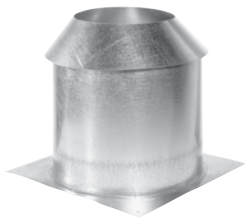


PART #	A	B
4DFPB	12"	1/2"
5DFPB	14 1/4"	1/2"

Trim Collar

- Use as a decorative cover for the Firestop Support Plate or Wall Thimble
- Black painted

SHIELD

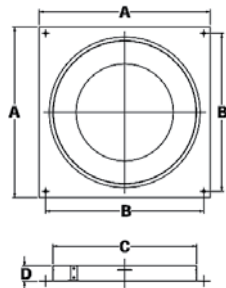


PART #	A	B	C
4DAIS12	14"	12 1/4"	12"
5DAIS12	14"	12 1/4"	12"
4DAIS36	14"	12 1/4"	36"
5DAIS36	14"	12 1/4"	36"

Attic Insulation Shield

- Use to keep insulation from making direct contact with vent pipe
- Use on single-story or on top story of multi-story building

FIRESTOP



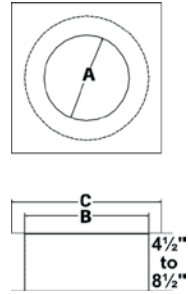
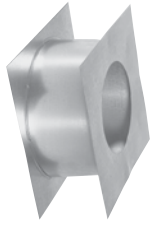
PART #	A	B	C	D
4DFSP	12"	11"	10"	1"
5DFSP	14"	13"	11"	1"

Firestop Support Plate

- Provides vertical support for vent and offsets: maintains clearance from the wall
- Can be used with Trim Collar for the interior ceiling
- Acts as a firestop



WALL THIMBLE

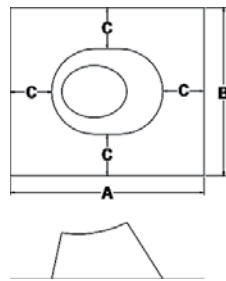
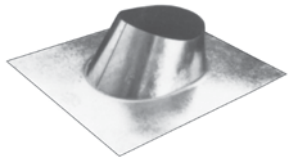


PART #	A	B	C
4DWT	6 3/4"	10"	11 11/16"
5DWT	8 1/4"	11 1/2"	14"

Wall Thimble

- Provides clearance to combustibles in through-the-wall installations
- Acts as a firestop
- Can be used with a black painted Face Plate for the interior wall
- Adjustable from 4 1/2" to 8 1/2"

FLASHINGS



PART #	A	B	C
4DF	18 3/4"	16"	4"
5DF	20"	17 3/4"	4"

Standard Flashing

- Fits flat to 5/12 pitch roofs
- Double-seamed construction for protection from leaks

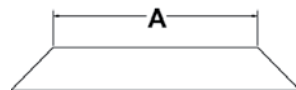


PART #	A	B	C
4DF12	22 1/2"	17"	4"
5DF12	21 3/4"	21 3/4"	4"

Steep Pitch Flashing

- Fits 6/12 to 12/12 pitch roofs
- Double seamed construction for protection from leaks

STORM COLLAR



PART #	A
4DSC	6 5/8"
5DSC	8"

Storm Collar

- Used to seal the gap between the flashing and vent pipe
- Seal with mastic



**ADAPTERS** PART # DESCRIPTION



4DSC-V	Valor Adapter
4DSC-K	Kingsman Adapter
5DSC-N	Napoleon Adapter
4DSCB-N1	Napoleon Adapter - Black
4DSC-N2	Napoleon Adapter - Mill

**Valor Adapter (4DSC-V)**

- Engineered for Valor fireplaces, requiring 4" x 6<sup>5</sup>/<sub>8</sub>" direct vent venting



**Kingsman Adapter (4DSC-K)**

- For use specifically with 4" x 7" Kingsman appliances



**Napoleon Adapter Black (4DSCB-N1)**



**Napoleon Adapter Mill (4DSC-N2)**



**Napoleon Adapter (4DSC-N2)**

- For use specifically with Napoleon and Continental fireplaces and stoves

**MISCELLANEOUS** PART #



AVD-PTU

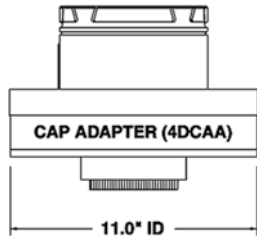
**Black Touch-Up Paint**



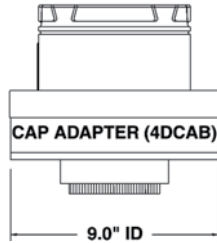
CHIMNEY CONVERSION KITS

PART # DESCRIPTION AND COMPONENTS

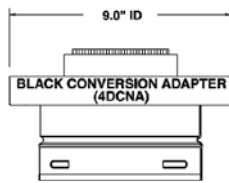
See Direct Vent Installation Illustrations



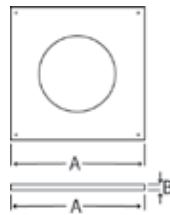
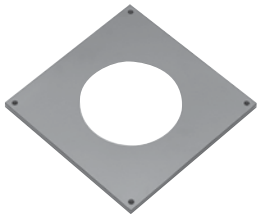
Cap Adapter (4DCAA)



Cap Adapter (4DCAB)



Black Conversion Adapter (4DCNA)



Trim Collar (4DFPB)

4DRCKA Class A: 8" Co-Axial Chimney Conversion Kit

Used when converting an existing 8" factory-built chimney to a direct vent appliance.

- Includes: Conversion Adapter (4DCNA)
- Cap Adapter - Large (4DCAA)

Requires a 4" and 7" flexible aluminum vent pipe (sold separately)

PART # DESCRIPTION AND COMPONENTS

4DRCKM Masonry Chimney Conversion Kit

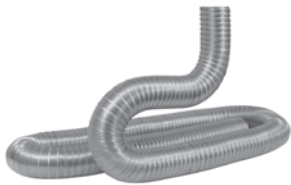
Used when converting an existing masonry chimney to a direct vent appliance.

- Includes: Conversion Adapter (4DCNA)
- Cap Adapter - Small (4DCAB)
- Trim Collar (DFPB)
- Flashing 17" x 17" (117413)

Requires a 4" and 7" flexible aluminum vent pipe (sold separately)

VENT PIPE

PART # SIZE



1730250	3" x 25'
1730350	3" x 35'
1740250	4" x 25'
1740350	4" x 35'
1770250	7" x 25'
1770350	7" x 35'

Flexible Aluminum Vent Pipe

- Flexible 2-ply aluminum vent used for collinear and co-axial vent systems



TERMINATION KITS

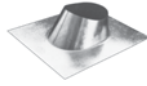
Vertical Termination Kit



vertical cap



storm collar



standard flashing

PART # DESCRIPTION & COMPONENTS

4DVTK Vertical Termination Kit

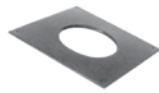
*Fits flat to 5/12 roof pitch*

- Includes: Vertical Cap (4DVC)  
Storm Collar (4DSC)  
Standard Flashing (4DF)

Horizontal Termination Kit #1



black 90° elbow



black trim collar



round horizontal cap



24" black length



12" adjustable black length

PART # DESCRIPTION & COMPONENTS

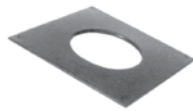
4DHTK1 Horizontal Termination Kit #1

- Includes 90° Elbow - Black (4D90LB)  
Trim Collar (4DFPB)  
Round Horizontal Cap (4DHC)  
24" Chimney Length - Black (4D2B)  
12" Chimney Length Adj. - Black (4D12AB)

Horizontal Termination Kit #2



black 90° elbow



black trim collar



round horizontal cap

PART # DESCRIPTION & COMPONENTS

4DHTK2 Horizontal Termination Kit #2

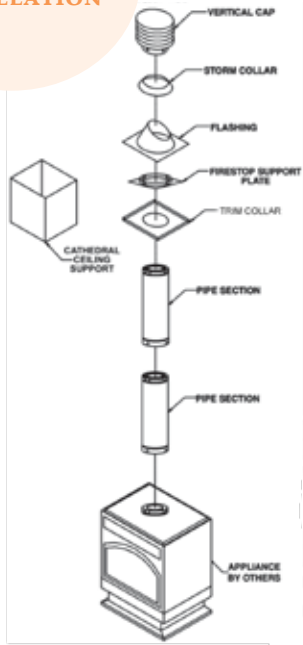
- Includes 90° Elbow - Black (4D90LB)  
Trim Collar (4DFPB)  
Round Horizontal Cap (4DHC)



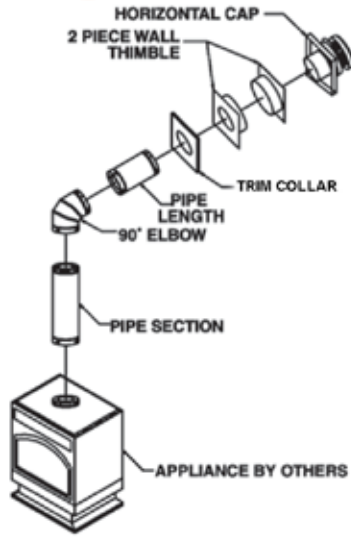


TYPICAL AMERIVENT DIRECT VENT INSTALLATIONS

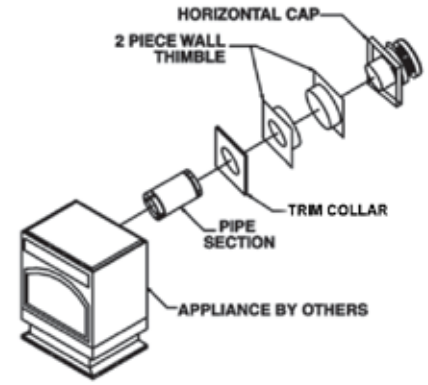
VERTICAL INSTALLATION



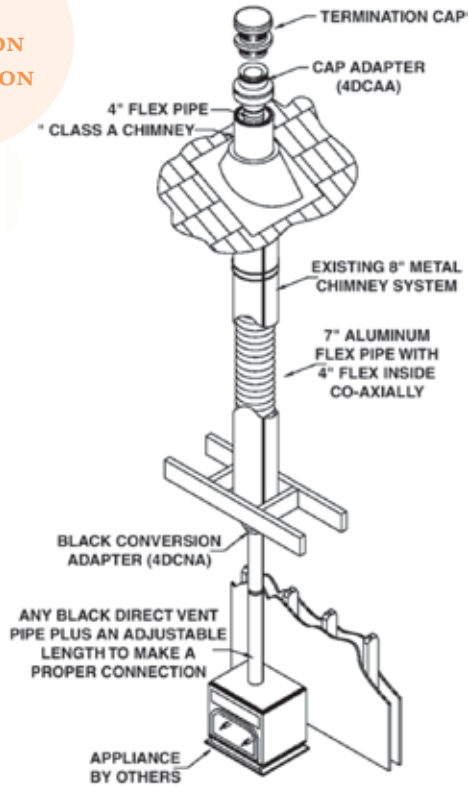
VERTICAL TO HORIZONTAL INSTALLATION



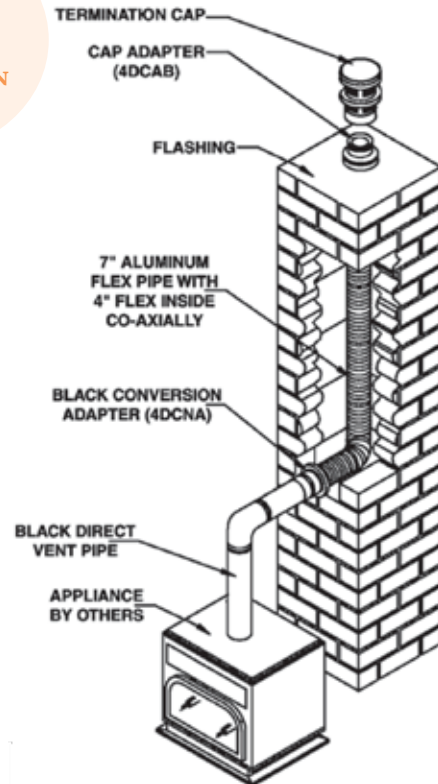
REAR EXIT HORIZONTAL INSTALLATION



CLASS A CONVERSION INSTALLATION



MASONRY CONVERSION INSTALLATION



**Ultimate Pellet Pipe** is a premiere venting system designed with the installer in mind. Fast, sealed and secure assembly coupled with laser-welded seams and smooth joint connections create a pipe system that is sleek and beautiful.



No need for silicone sealant with Ultimate Pellet Pipe. The gasket design seals the pipe tight, eliminating the need for silicone at the seams.

Offer your customers a superior pellet venting solution, Ultimate Pellet Pipe features:



- Easy to assemble
- Silicone gasket sealed
- Laser-welded seams
- Smooth joint connections
- 360° Lock-Tab secure rotation
- Lock-Tab allows for easy dismantling for inspection and cleaning
- 300 Series stainless steel inner, galvalume outer
- Complete offering of painted pipe, fittings, and components
- 1" Clearance to combustibles



### The Ultimate Hearth Solution for Pellet Stove Venting

#### Stainless Steel and Galvalume Construction

The Ultimate Pellet Pipe's inner pipe is made of 300 series stainless steel which provides exceptional corrosion resistance. The outer pipe is manufactured with galvalume steel, for superior protection against harsh outdoor elements.

#### High Temperature Paint or Galvalume Exterior

Ultimate Pellet Pipe is available finished in a matte black or unpainted galvalume. Our high temperature matte black paint will withstand temperatures up to 1200° F and look beautiful for years.

#### Smooth Joint Connections

Our unique end forming process creates a connection joint that provides a smooth, clean profile. The gasket within the pipe seals the connection tight, providing a superior, leak-free connection.



#### Gasket Technology

Say goodbye to messy silicone to seal those joints. Ultimate Pellet Pipe's superior silicone gasket technology seals the system and eliminates fly ash from escaping. Easy to assemble. Easy to take apart for inspection and cleaning. Ultimate Pellet Pipe's silicone gasket technology has been field proven for more than 15 years.

#### Laser-Welded Seams

Both the inner and outer pipes are laser-welded, creating a smooth seam and consistently round pipe. No seam, tight seal, no problem!

#### Lock-Tab™ Security

Ultimate Pellet Pipe features a female end Lock-Tab system. When engaged, the Lock-Tab will securely hold pipe in place, allowing 360° rotation. This unique feature is easy to engage and disengage. Fast, easy, and secure!

### Specifications and Dimensions

Model UPP has been tested and listed by Underwriters Laboratories Inc. in accordance with:

US Standards	<b>UL641:</b> Type L low temperature venting systems
	<b>UL103</b> ( <i>applicable portions of</i> ): The standard for residential type and building heating appliance chimneys
Canadian Standards	<b>ULC-S609:</b> Low temperature type L vents
	<b>ULC/ORD-C441:</b> Other recognized document for pellet vents

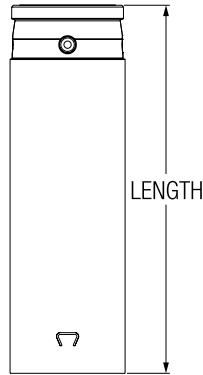
US Standard for Chimneys, Fireplaces, Vents and Solid Fuel Burning Appliances, NFPA-211

Canadian Installation Code for Solid Fuel Burning Appliances and Equipment, CSA-B365

The UPP system is rated for flue temperatures up to 570°F/ 300°C and is backed by our Smart Choice Warranty



## LENGTHS



### Lengths

- Available in lengths of 6", 12", 18", 24", 36" and 60"
- 1 3/4" overlap at joints
- Painted black or unpainted

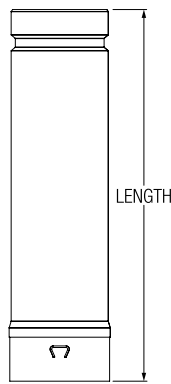
PART #	PRODUCT CODE	FINISH	LENGTH
--------	--------------	--------	--------

### 3" Diameter

3UPP-6	823000		6"
3UPP-6B	823000	Black	6"
3UPP-12	823001		12"
3UPP-12B	823001B	Black	12"
3UPP-18	823002		18"
3UPP-18B	823002B	Black	18"
3UPP-24	823003		24"
3UPP-24B	823003B	Black	24"
3UPP-36	823004		36"
3UPP-36B	823004B	Black	36"
3UPP-60	823005		60"
3UPP-60B	832005B	Black	60"

### 4" Diameter

4UPP-6	824000		6"
4UPP-6B	824000B	Black	6"
4UPP-12	824001		12"
4UPP-12B	824001B	Black	12"
4UPP-18	824002		18"
4UPP-18B	824002B	Black	18"
4UPP-24	824003		24"
4UPP-24B	824003B	Black	24"
4UPP-36	824004		36"
4UPP-36B	824004B	Black	36"
4UPP-60	824005		60"
4UPP-60B	824005B	Black	60"



### Adjustable Lengths

- Eliminates the need to field cut
- Adjustable up to 9 1/2" by simply sliding over a UPP fixed length
- Features a factory installed O-ring
- Painted black or unpainted

PART #	PRODUCT CODE	FINISH	LENGTH
--------	--------------	--------	--------

### 3" Diameter

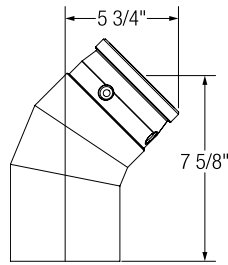
3UPP-12A	823007		Adj. 12"
3UPP-12AB	823007B	Black	Adj. 12"

### 4" Diameter

4UPP-12A	824007		Adj. 12"
4UPP-12AB	824007B	Black	Adj. 12"



ELBOWS



45° Elbow

- Used as an offset around an obstruction
- Painted black or unpainted
- Can be used as a termination when accompanied by a Screen Cap

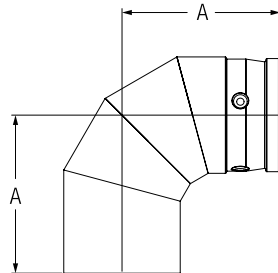
PART # PRODUCT CODE FINISH

3" Diameter

3UPP-45E	823008	
3UPP-45EB	823008B	Black

4" Diameter

4UPP-45E	824008	
4UPP-45EB	824008B	Black



90° Elbow

- Used as an offset around an obstruction
- Painted black or unpainted

PART # PRODUCT CODE FINISH

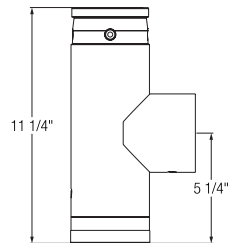
3" Diameter

3UPP-90E	823006	
3UPP-90EB	823006B	Black

4" Diameter

4UPP-90E	824006	
4UPP-90EB	824006B	Black

TEE COMPONENTS



Tee with Tee Cap

- Used to transition from horizontal to vertical orientation
- Provides easy access for inspection and maintenance
- Includes Tee Cap
- Painted black or unpainted

PART # PRODUCT CODE FINISH DESCRIPTION

3" Diameter

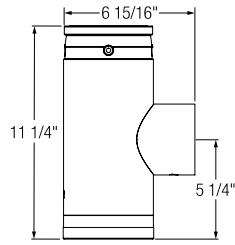
3UPP-T	823009		Tee w/Tee Cap
3UPP-TB	823009B	Black	
3UPP-TA	823022		Tee w/Tee Cap & Appliance Adapter
3UPP-TAB	823022B	Black	

4" Diameter

4UPP-T	824009		Tee w/Tee Cap
4UPP-TB	824009B	Black	
4UPP-TA	824022		Tee w/Tee Cap & Appliance Adapter
4UPP-TAB	824022B	Black	



## TEE COMPONENTS (CONTINUED)



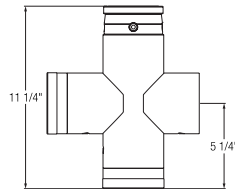
**Increaser Tee with Tee Cap**

- Used to transition from horizontal to vertical orientation
- Converts a 3" appliance to a 4" UPP system
- Provides easy access for inspection and maintenance
- Includes Tee Cap
- Painted black or unpainted

### PART #    PRODUCT CODE    FINISH

#### 3" Diameter

3UPP-IT	823023	
3UPP-ITB	823023B	Black



**Double Tee with Tee Caps**

- Used to transition from horizontal to vertical orientation
- Allows horizontal or vertical cleaning access and inspection
- Includes two Tee Caps
- Painted black or unpainted

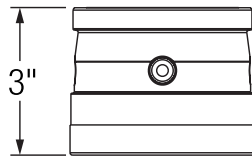
### PART #    PRODUCT CODE    FINISH

#### 3" Diameter

3UPP-DT	823018	
3UPP-DTB	823018B	Black

#### 4" Diameter

4UPP-DT	824018	
4UPP-DTB	824018B	Black



**Tee Cap**

- Use as a replacement

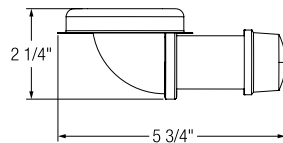
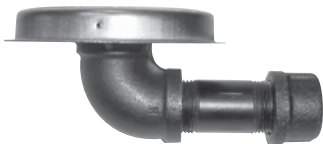
### PART #    PRODUCT CODE    FINISH

#### 3" Diameter

3UPP-TC	823016	
3UPP-TCB	823016B	Black

#### 4" Diameter

4UPP-TC	824016	
4UPP-TCB	824016B	Black



**Vacuum Clean-Out Cap**

- Replaces the existing Tee Cap
- Used to clean the vent with no mess

### PART #    PRODUCT CODE

#### 3" Diameter

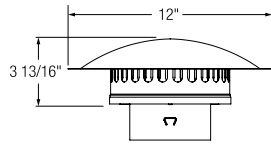
3UPP-VCC	823024
----------	--------

#### 4" Diameter

4UPP-VCC	824024
----------	--------



**RAIN CAPS**



**PART #    PRODUCT CODE**

**3" Diameter**

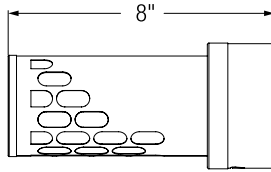
3UPP-VC	823014
---------	--------

**4" Diameter**

4UPP-VC	824014
---------	--------

**Vertical Termination Cap**

- Vent termination for a vertical, through-the-roof installation
- Designed to prevent rain and snow from entering the vent



**PART #    PRODUCT CODE**

**3" Diameter**

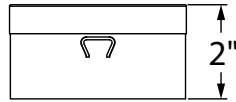
3UPP-HC	823020
---------	--------

**4" Diameter**

4UPP-HC	824020
---------	--------

**Horizontal Termination**

- Vent termination for a horizontal through-the-wall installation



**PART #    PRODUCT CODE**

**3" Diameter**

3UPP-45T	823034
----------	--------

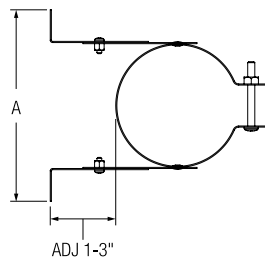
**4" Diameter**

4UPP-45T	824034
----------	--------

**Screen Cap**

- Must be used in conjunction with a 45° Elbow to serve as a horizontal termination

**WALL BAND**



**PART #    PRODUCT CODE**

**3" Diameter**

3UPP-WB	823019
---------	--------

**4" Diameter**

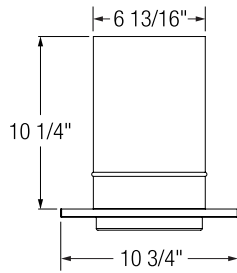
4UPP-WB	824019
---------	--------

**Adjustable Wall Band**

- Stabilize and support a vertical or horizontal run of pipe
- Clearance distance adjustable from 1" to 3"



## CEILING SUPPORT



### Ceiling Support

- Used to support UPP from below the ceiling joist
- Maintains 1" clearance to combustibles
- Trim plate is painted black

### PART # PRODUCT CODE FINISH

#### 3" Diameter

3UPP-CSB	823012	Black
----------	--------	-------

#### 4" Diameter

4UPP-CSB	824012	Black
----------	--------	-------

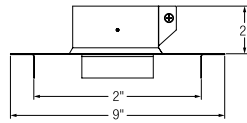
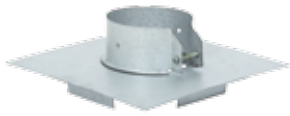
### PART # PRODUCT CODE FINISH

#### 3" Diameter

3UPP-FCS	823047	
----------	--------	--

#### 4" Diameter

4UPP-FCS	824047	
----------	--------	--



### Ceiling Support / Firestop

- Used to support UPP from above the ceiling joist
- Maintains 1" clearance to combustibles

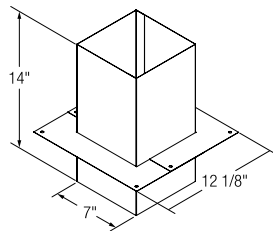
### PART # PRODUCT CODE FINISH

#### 3" Diameter

3UPP-CCS	823031	Black
----------	--------	-------

#### 4" Diameter

4UPP-CCS	824031	Black
----------	--------	-------



### Cathedral Ceiling Support

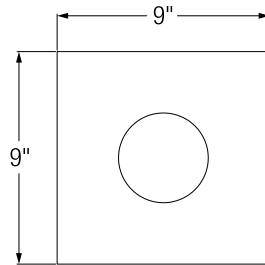
- Used to support UPP in a cathedral or sloped ceiling installation
- Maintains clearance to combustibles
- Painted black





TRIM COLLAR

PART # PRODUCT CODE FINISH



3" Diameter

3UPP-TP	823032	Black
---------	--------	-------

4" Diameter

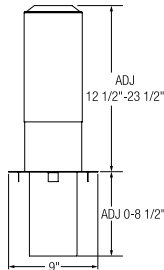
4UPP-TP	824032	Black
---------	--------	-------

Trim Collar

- Finishing plate used at the ceiling level or on a sidewall
- Maintains clearance to combustibles
- Painted black

SHIELDS

PART # PRODUCT CODE



3" Diameter

3UPP-AIS	823010
----------	--------

4" Diameter

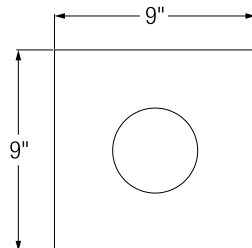
4UPP-AIS	824010
----------	--------

Attic Insulation Shield

- Used in the attic to guard against the hazard of blown-in or blanket Insulation
- Maintains a 1" clearance to combustibles
- Adjust up to 23 1/2"
- Includes a drop-down joist shield to protect the joist area

FIRESTOP

PART # PRODUCT CODE



3" Diameter

3UPP-FS	823011
---------	--------

4" Diameter

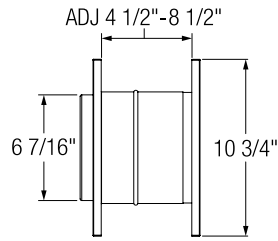
4UPP-FS	824011
---------	--------

Firestop

- Used to protect combustible materials where UPP passes through a ceiling
- Can also be used at the soffit level in an exterior installation



## WALL THIMBLE



### Wall Thimble

- Used in a combustible through-the-wall installation
- Maintains clearance to combustibles
- Adjustable for 4 1/2" to 8 1/2" thick walls
- Painted black

### PART # PRODUCT CODE FINISH

#### 3" Diameter

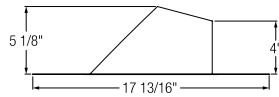
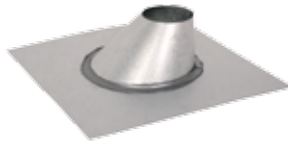
3UPP-WTB	823013	Black
----------	--------	-------

#### 4" Diameter

4UPP-WTB	824013	Black
----------	--------	-------

## FLASHINGS

### PART # PRODUCT CODE PITCH



#### 3" Diameter

3UPP-F6	823035	1/12 to 6/12
---------	--------	--------------

3UPP-F12	823036	6/12 to 12/12
----------	--------	---------------

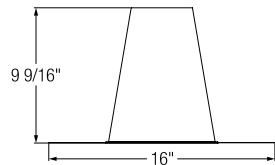
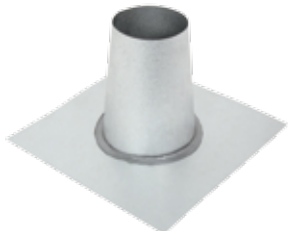
#### 4" Diameter

4UPP-F6	824035	1/12 to 6/12
---------	--------	--------------

4UPP-F12	824036	6/12 to 12/12
----------	--------	---------------

### Adjustable Flashing

- Weatherproof the installation through a pitched roof
- For pitches of 0/12 to 6/12 and pitches of 6/12 to 12/12



### PART # PRODUCT CODE

#### 3" Diameter

3UPP-TF	823015
---------	--------

#### 4" Diameter

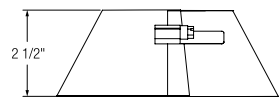
4UPP-TF	824015
---------	--------

### Tall Cone Flashing

- Weatherproof the installation through a flat roof

## STORM COLLAR

### PART # PRODUCT CODE



#### 3" Diameter

3UPP-SC	823021
---------	--------

#### 4" Diameter

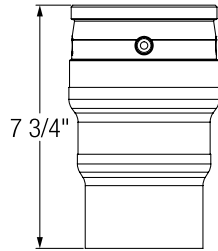
4UPP-SC	824021
---------	--------

### Storm Collar

- Maintain a weather tight seal between the vent and the roof flashing
- Silicone must be applied (not included)



**ADAPTERS**



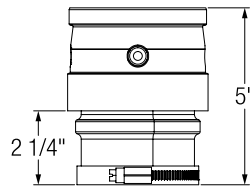
**3" to 4" Increaser**

- Transition from a 3" to a 4" UPP
- Painted black or unpainted

PART #	PRODUCT CODE	FINISH
--------	--------------	--------

**3" Diameter**

3UPP-I4	823025	
3UPP-I4B	823025B	Black



**Appliance Adapter**

- Attach to the appliance for connection to UPP

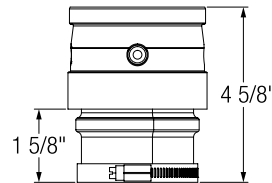
PART #	PRODUCT CODE	FINISH
--------	--------------	--------

**3" Diameter**

3UPP-AA	823017	
3UPP-AAB	823017B	Black

**4" Diameter**

4UPP-AA	824017	
4UPP-AAB	824017B	Black



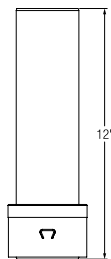
**Multi-Fit Connector**

- Adjustable, 3" appliance adapter
- Increases vent from 3" to 4"

PART #	PRODUCT CODE	FINISH
--------	--------------	--------

**4" Diameter**

4UPP-MFC	824055	
----------	--------	--



**Masonry Adapter**

- Adapt UPP to a masonry chimney

PART #	PRODUCT CODE
--------	--------------

**3" Diameter**

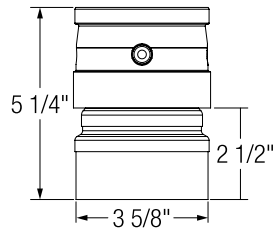
3UPP-MA	823033
---------	--------

**4" Diameter**

4UPP-MA	824033
---------	--------

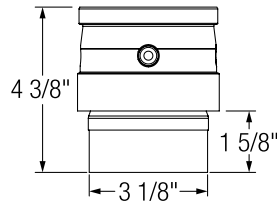


## ADAPTERS (CONTINUED)



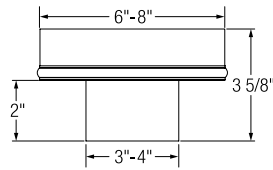
**Harman Pipe Adapter - Outside**

- Harman appliance outlet for easy pipe connection



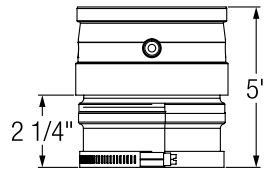
**Harman Pipe Adapter - Inside**

- Attaches a Harman appliance to UPP



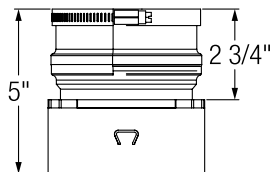
**Chimney Adapter**

- Transition from UPP to a Class A insulated chimney



**Flex Connector**

- Transition from a flexible stainless steel liner to UPP



**Reverse Flex Connector**

- Transition from UPP to a flexible stainless steel liner

### PART #    PRODUCT CODE

#### 3" Diameter

3UPP-HAA1	823028
-----------	--------

### PART #    PRODUCT CODE

#### 3" Diameter

3UPP-HAA2	823029
-----------	--------

### PART #    PRODUCT CODE    SIZE

#### 3" Diameter

3UPP-CA6	823038	6"
3UPP-CA8	823039	8"

#### 4" Diameter

4UPP-CA6	824038	6"
4UPP-CA8	824039	8"

### PART #    PRODUCT CODE

#### 4" Diameter

4UPP-FC	824026
---------	--------

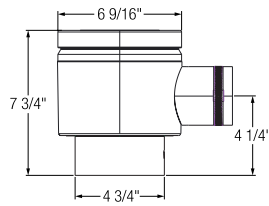
### PART #    PRODUCT CODE

#### 4" Diameter

4UPP-FCR	824027
----------	--------



**ADAPTERS (CONTINUED)** **PART #**    **PRODUCT CODE**



**4" Diameter**

4UPP-DTA	824037
----------	--------

**Direct-Temp Adapter**

- Transition from UPP pipe to Direct-Temp direct vent system



**PART #**    **PRODUCT CODE**

**4" Diameter**

4DT-UPPSAL	1604840
------------	---------

**Low Profile Direct-Temp Adapter**

- Transition from UPP to Direct-Temp system
- Fresh air intake nozzle
- 3/4" Shorter than 4UPP-DTA



**PART #**    **PRODUCT CODE**

**4" Diameter**

4DT-UPPSA45	1604841
-------------	---------

**45° Direct-Temp Adapter**

- Transition from UPP to Direct-Temp system
- Adjustable fresh air intake nozzle positions

**MISCELLANEOUS** **PART #**    **SIZE**

7001 SIL	Single Use Lubricant Packet
7001 SIL-5	5oz. Lubricant Tube



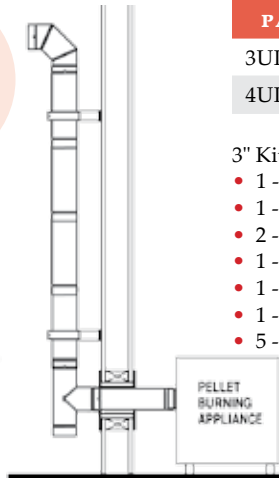
**Lubricant**

- To lubricate UPP gaskets for easier assembly and dismanteling



## PELLET PIPE KITS

### THROUGH THE WALL KIT



PART #	PRODUCT CODE	SIZE
3UPP-TWK	823044	3" Kit
4UPP-TWK	824044	4" Kit

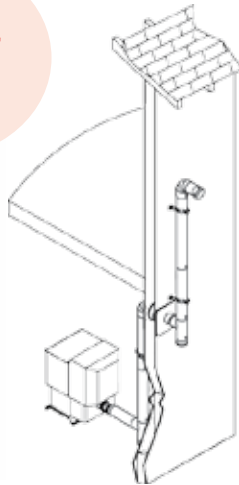
#### 3" Kit Contains:

- 1 - Horizontal Termination (3")
- 1 - 90° Elbow (3")
- 2 - Adjustable Wall Band (3")
- 1 - Appliance Adapter (3")
- 1 - Wall Thimble (3")
- 1 - Tee with Tee Cap (3")
- 5 - 12" Pipe Length (3")

#### 4" Kit Contains:

- 1 - Horizontal Termination (4")
- 1 - 90° Elbow (4")
- 2 - Adjustable Wall Band (4")
- 1 - Appliance Adapter (3")
- 1 - Appliance Adapter (4")
- 1 - 3" to 4" Increaser
- 1 - Wall Thimble (4")
- 1 - Tee with Tee Cap (4")
- 5 - 12" Pipe Length (4")

### BASEMENT KIT

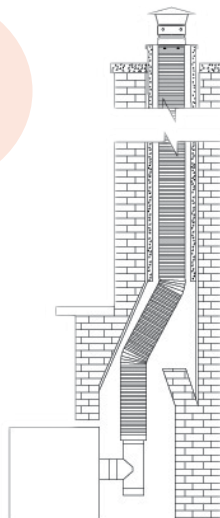


PART #	PRODUCT CODE	SIZE
4UPP-BK	824045	4" Kit

#### 4" Kit Contains:

- 1 - Horizontal Termination (4")
- 1 - Appliance Adapter (3")
- 1 - Appliance Adapter (4")
- 1 - 3" to 4" Increaser
- 1 - Wall Thimble (4")
- 2 - Tee with Tee Cap (4")
- 3 - Adjustable Wall Band (4")
- 2 - 90° Elbow (4")
- 2 - 12" Pipe Length (4")
- 4 - 24" Pipe Length (4")

### INSERT FLEX KIT



PART #	PRODUCT CODE	SIZE
4UPP-IK25	824042	25' Kit
4UPP-IK35	824043	35' Kit

#### 25' Kit Contains:

- 1 - 25' of 4" Stainless Flex
- 1 - Increaser Tee w/Tee Cap (4")
- 1 - Reverse Flex Connector (4")
- 1 - 4" Termination Cap
- 1 - 4" Flex Flashing Connector
- 1 - 4" Flashing/Support
- 1 - Appliance Adapter 3"
- 1 - Silicone Sealant

#### 35' Kit Contains:

- 1 - 35' of 4" Stainless Flex
- 1 - Increaser Tee with Tee Cap (4")
- 1 - Reverse Flex Connector (4")
- 1 - 4" Termination Cap
- 1 - 4" Flex Flashing Connector
- 1 - 4" Flashing/Support
- 1 - Appliance Adapter 3"
- 1 - Silicone Sealant



The AmeriVent Model DCC Double-Wall Stove Pipe is designed for use with AmeriVent chimney systems.



Model DCC is UL-listed for minimum airspace clearance to combustibles of 6" to the rear and side walls, 8" to ceilings.

#### Construction Features

- UL-listed for 1000° continuous operation
- Stainless steel inner liner
- Air-insulated, double-wall design
- Painted Black
- Easy to inspect
- Easy to install
- Screw joint assembly
- Drip-free design to prevent creosote leakage
- Components individually wrapped in plastic sleeves

*Note: A single-wall adapter is required to attach Double-Wall Chimney (DCC) to Model HS/HSS/TD Chimney*





## CHIMNEY LENGTHS



### Chimney Length

- Stainless steel inner liners
- Easy to install and disassemble; screw-joint assembly
- 1 1/4" overlap at joints

PART #	PRODUCT CODE	LENGTH	I.D.	O.D.
--------	--------------	--------	------	------

#### 6" Diameter

6DCC-12-BK	887000	12"	6"	7"
6DCC-18-BK	887032	18"	6"	7"
6DCC-24-BK	887003	24"	6"	7"
6DCC-36-BK	887034	36"	6"	7"
6DCC-48-BK	887036	48"	6"	7"

#### 8" Diameter

8DCC-12-BK	887016	12"	8"	9"
8DCC-18-BK	887046	18"	8"	9"
8DCC-24-BK	887019	24"	8"	9"
8DCC-36-BK	887048	36"	8"	9"
8DCC-48-BK	887050	48"		



### Adjustable Chimney Length

- 6" length section slips over pipe section for adjustments from 2 1/2" to 5"
- 18" length section slips over pipe section for adjustments from 3" to 15"

PART #	PRODUCT CODE	LENGTH	I.D.	O.D.
--------	--------------	--------	------	------

#### 6" Diameter

6DCC-6A-BK	887006	6"	6"	7"
6DCC-18A-BK	887001	18"	6"	7"

#### 8" Diameter

8DCC-6A-BK	887021	6"	8"	9"
8DCC-18A-BK	887017	18"	8"	9"



### Two-Piece Telescoping Section

- Telescopes between stove and supports for adjustments from 3 1/2' to 5 1/2'

PART #	PRODUCT CODE	LENGTH	I.D.	O.D.
--------	--------------	--------	------	------

#### 6" Diameter

6DCC-TS5-BK	887013	3 1/2' to 5 1/2'	6"	7"
-------------	--------	------------------	----	----

#### 8" Diameter

8DCC-TS5-BK	887029	3 1/2' to 5 1/2'	8"	9"
-------------	--------	------------------	----	----



**ELBOWS**



45° Elbow

- Fixed 45° Elbow is used to offset connector pipe toward the insulated chimney system

PART #	PRODUCT CODE	A	B
<b>6" Diameter</b>			
6DCC-45-BK	887004	9 1/4"	10"
<b>8" Diameter</b>			
8DCC-45-BK	887020	11 1/4"	12"

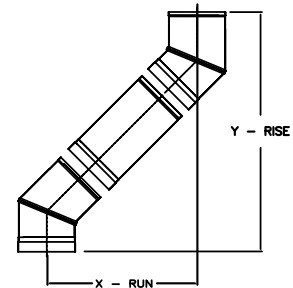


90° Elbow

- Fixed 90° Elbow is used to offset connector pipe toward the insulated chimney system

PART #	PRODUCT CODE	A	B
<b>6" Diameter</b>			
6DCC-90-BK	887008	9 1/4"	10"
<b>8" Diameter</b>			
8DCC-90-BK	887023	11 1/4"	12"

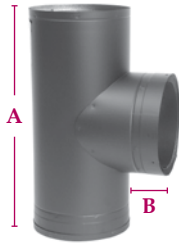
	PIPE LENGTH	X - RUN	Y - RUN
<b>6" Diameter DCC (2) 45° Elbows</b>	0"	5 1/2"	13 1/4"
	12"	13 1/16"	20 3/16"
	18"	17 5/16"	25 1/16"
	24"	21 1/2"	29 5/16"
	36"	30"	37 3/4"
<b>7" Diameter DCC (2) 45° Elbows</b>	48"	38 1/2"	46 1/4"
	0"	6 3/16"	14 13/16"
	12"	13 3/4"	22 9/16"
	18"	18"	26 3/4"
	24"	22 1/4"	31"
<b>8" Diameter DCC (2) 45° Elbows</b>	36"	30 3/4"	39 1/2"
	48"	39 1/4"	48"
	0"	6 7/8"	16 5/8"
	12"	14 1/2"	24 1/4"
	18"	18 3/4"	28 1/2"
<b>8" Diameter DCC (2) 45° Elbows</b>	24"	23"	32 3/4"
	36"	31 1/2"	41 3/16"
	48"	39 11/16"	49 11/16"





# MODEL DCC DOUBLE WALL STOVE PIPE

## TEE COMPONENTS



PART #	PRODUCT CODE	A	B
--------	--------------	---	---

### 6" Diameter

6DCC-T-BK	887012	16"	3"
-----------	--------	-----	----

### 8" Diameter

8DCC-T-BK	887028	17"	3"
-----------	--------	-----	----

### Tee with Tee Cap

- Used where stove pipe connection is made at the rear of the appliance

## ADAPTERS

PART #	PRODUCT CODE	A
--------	--------------	---

### 6" Diameter

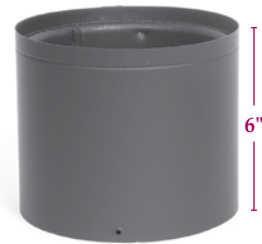
6XDCC-7	453086	6" to 7"
---------	--------	----------

6XDCC-8-BK	887014	6" to 8"
------------	--------	----------



### Increaser

- Used at either the top or bottom of DCC stove pipe to increase a 6" DCC to an 8" DCC.
- The 6XDCC-7 to be used at the top of DCC stove pipe to increase the 6" DCC to a 7" chimney system



PART #	PRODUCT CODE	LENGTH
--------	--------------	--------

### 6" Diameter

6DCC-SA-BK	887011	6"
------------	--------	----

### 8" Diameter

8DCC-SA-BK	887027	6"
------------	--------	----

### Stove Adapter

- 6" high adapter even fits over tall stove collars



**ADAPTERS (CONTINUED)**



PART #	PRODUCT CODE
<b>6" Diameter</b>	
6DCC-K-BK	887009
<b>8" Diameter</b>	
8DCC-K-BK	887025

**Double Wall Connector Kit**

The kit includes:

- two 24" pipe sections
- one 18" adjustable length pipe section
- one stove adapter

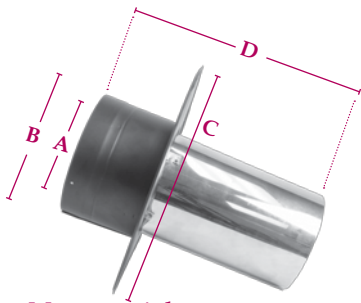
*Kits are available in 6" and 8" sizes to accommodate vertical installations up to 66"*



**Oval-to-Round Adapter**

- Used to convert 8" Oval Flue outlets to 8" Round DCC Stove Pipe
- Secure with screws

PART #	PRODUCT CODE	A	B	C
<b>8" Diameter</b>				
8DCC-ORA-BK	887026	9 1/4"	12 1/2"	10"



**Masonry Adapter**

- For installations through a masonry wall
- Used to connect Double Wall Stove Pipe to an existing masonry chimney or a relined masonry chimney with stainless steel liner

PART #	PRODUCT CODE	A	B	C	D
<b>6" Diameter</b>					
6DCC-MA	887051	6"	7"	14"	13 5/8"
<b>8" Diameter</b>					
8DCC-MA	887053				



# MODEL DCC DOUBLE WALL STOVE PIPE

## UNIVERSAL FINISHING BAND

PART #	PRODUCT CODE	SIZE	PACK
DCC-FB-BK	887052	All	1



### Universal Finishing Band

- Used to conceal the connecting joint at the chimney adapter

## MISCELLANEOUS

### PART #

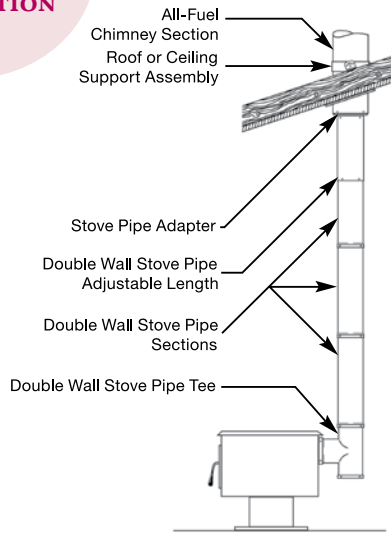
AVD-PTU



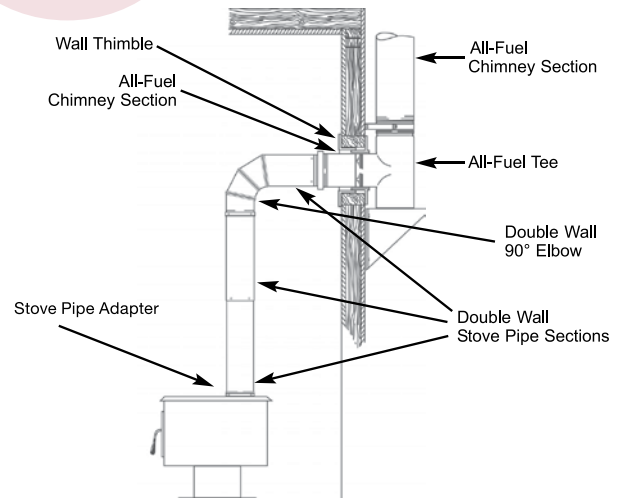
### Black Touch-Up Paint

## TYPICAL AMERIVENT SUPPORT INSTALLATIONS

### VERTICAL SUPPORT INSTALLATION



### WALL SUPPORT INSTALLATION



# INDEX

CATEGORY	TLC	HS HSS	Direct Vent	Pellet Pipe	DCC
Adapters	19	32	43	55	62
Anchor Plates	11	27			
Ceiling Supports	12	27	40	52	
Collinears			39		
Elbows	6	23	37	49	61
Firestop			41	53	
Flashing	16	32	42	54	
Insulation	19				
Kits		33	45	58	60
Lengths	4	23	36	48	60
Miscellaneous	18		43	57	64
Plates		29			
Rain Caps	8	25	38	51	
Roof Supports	11	26			
Roof Braces	12	27			
Shields	14	31	41	53	
Spark Arrestors	8	25			
SS Locking Bands	4				
Storm Collars	18	30	42	54	
Tee Components	5	24		49	62
Trim Collar	13	28	41	53	
Universal Finishing Band					64
Universal Snow Splitter	9				
Vent Collar			44		
Wall Bands	9	25	40	51	
Wall Support	10	26			
Wall Thimble	15	31	42	54	
Wind Screen			40		

Hart & Cooley, Inc.  
5030 Corporate Exchange Blvd.  
Grand Rapids, MI 49512

800-423-4270  
800-626-3825 Fax  
800-669-3190 Technical Support

[ameri-vent.com](http://ameri-vent.com)



**WARD**  
INDUSTRIES

**SELKIRK**  
STRONG.

**rps**

**HART** **COOLEY**  
install confidence.

**Lima**

**AMPCO**

**REZZIN**

**polyflue**

**PORTALSPLUS**

**AtMate**

**heatfab**

**AMERIFLEX**

**AmeriFlow**  
by Hart & Cooley, Inc.

**MILCOR**

GRILLES | REGISTERS | DIFFUSERS | FLEXIBLE AIR DUCT | VENT | CHIMNEY | FILTERS | FLEXIBLE AIR DUCT  
ACCESS DOORS | EXHAUST DUCTS | DUCT COMPONENTS | ROOFING PRODUCTS | HATCHES | SMOKE VENTS