

HAMMOND VALVE



CONTENTS

IRON GATE, CLIP GATE, GLOBE AND CHECK VALVES	1
SILENT CHECK VALVES	1
COMMERCIAL BRONZE BALL VALVES	5-6
COMMERCIAL BRASS BALL VALVES.....	6
BRONZE GATE VALVES.....	2
BRONZE GLOBE AND ANGLE VALVES	3
BRONZE CHECK VALVES.....	4
ULTRAPURE® VALVES	8-10
PLUMBING & HEATING VALVES.....	11-14
2-PIECE INDUSTRIAL BALL VALVES	7
3-PIECE INDUSTRIAL BALL VALVES	7
IRON LUG-BODY AND WAFER-BODY BUTTERFLY VALVES.....	15
6000 Series Standard Industrial-Application Butterfly Valves	
5000 Series Commercial-Construction Applications	
H Series High-Pressure Applications	
HP Series High Performance Applications	
ELECTRIC AND PNEUMATIC VALVE ACTUATION.....	16
CAST STEEL GATE, GLOBE, AND CHECK VALVES.....	17

REV 05/16

The information presented on this sheet is correct at the time of publication. Hammond Valve reserves the right to change design, and/or material specifications without notice. For the Installation, Operation and Maintenance Manual (IOM) see the Technical/Service Information section on our website. For the most current information access www.hammondvalve.com
Hammond Valve is a registered trade mark of Milwaukee Valve Company.



IRON GATE & CLIP GATE, GLOBE, CHECK, SILENT CHECK

IRON GATE & CLIP GATE



IR1138

IR1138 or IR1138-HI*

125 WSP 200 WOG, Non-Rising Stem, IBBM, MSS SP-70, IR1138 Available 2" Thru 12", IR1138-HI Available 2" Thru 24"

IR1144 or IR1144-HI*

125 WSP 200 WOG, Non-Rising Stem, All Iron, MSS SP-70, IR1144 Available 2" Thru 12", IR1144-HI Available 2" Thru 24"

IR1140 or IR1140-HI*

125 WSP 200 WOG, OS & Y, IBBM, MSS SP-70, IR1140 Available 2" Thru 12", IR1140-HI Available 2" Thru 24"

IR1146, IR1146-HI* or IR1140-UL

125 WSP 200 WOG, OS & Y, All Iron, MSS SP-70, IR1146 Available 2" Thru 12", IR1146-HI Available 2" Thru 36", IR1140-UL Available 2-1/2" Thru 6"

IR1913

3% Nickel Iron, OS & Y, Iron Body, SS Trim, MSS SP-70, 2" Thru 12"

IR330 or IR330-HI*

250 WSP 200 WOG, OS & Y, IBBM, MSS SP-70, Available 2" Thru 12", IR330-HI Available 2" Thru 12"



IR1116

IRON GLOBE

IR116 or IR116-HI*

125 WSP 200 WOG, MSS SP-85, IR116 Available 2" Thru 10", IR116-HI Available 2" Thru 10"

IR313-HI

250 WSP 500 WOG, IBBM, MSS SP-85, Available 2" Thru 6"



IR1124

IRON CHECK

IR1124, IR1124-HI* or IR1124-UL

125 WSP 200 WOG, IBBM MSS SP-71, IR1124 Available 2" Thru 12", IR1124-HI Available 2" Thru 24", IR1124-UL Available 2" Thru 12"

IR1126-HI*

125 WSP 200 WOG, All Iron IR1126-HI Available 2" Thru 10"

IR1937

3% Nickel Iron, Iron Body, SS Trim, MSS SP-71, 2" Thru 12"

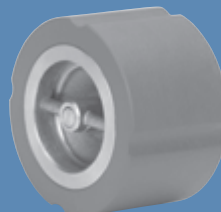
IR322-HI*

250 WSP 500 WOG, IBBM MSS SP-71, 2-1/2" Thru 6"

SILENT CHECK**

IR9253

Class 125, Wafer-Style Cast-Iron Body, Stainless Steel Disc, SS Spring ANSI NSF-372 Available 2" Thru 10" (Also Available Class 250)



IR9253

IR9354

Class 125, Globe-Style Cast-Iron Body, Stainless Steel Disc, SS Spring ANSI NSF-372 2-1/2" Thru 24" (Also Available Class 250)

* or "HI" designates International

** The wetted surface on this product with S.S. Trim contacted by water contains less than one quarter of one percent (.25% of lead by weight).

BRONZE GATE VALVES



IB645

NON-RISING STEM Threaded End-Threaded Bonnet

IB645
125 PSI WSP-200 PSI WOG,
MSS SP-80, 1/4" Thru 4"

IB646
150 PSI WSP-300 PSI WOG,
MSS SP-80, 1/4" Thru 4"

Press x Press Ends - Threaded Bonnet

IB645 P2
200 PSIG @ 250°F, MSS SP-80,
1/2" Thru 2"



IB647

NON-RISING STEM Solder End-Threaded Bonnet

IB647
125 PSI WSP-200 PSI WOG,
MSS SP-80, 3/8" Thru 4"

NON-RISING STEM Threaded End-Union Bonnet

IB638
150 PSI WSP-300 PSI WOG,
MSS SP-80, 1/4" Thru 2"

IB656
300 PSI WSP-1000 PSI WOG,
Stainless-Steel Seats, MSS SP-80,
1/4" Thru 2"

Press x Press Ends - Union Bonnet

IB638 P2
200 PSIG @ 250°F, MSS SP-80,
1/2" Thru 2"



IB656

RISING STEM Threaded End-Threaded Bonnet

IB640
125 WSP- 200 WOG, MSS SP-80,
1/4" Thru 4"

IB641
150 WSP-300 WOG, MSS SP-80,
1/4" Thru 4"

Press x Press Ends - Threaded Bonnet

IB640 P2
200 PSIG @ 250°F, MSS SP-80,
1/2" Thru 2"



IB640 P2



IB635

RISING STEM Solder End-Threaded Bonnet

IB635
125 WSP-200 WOG, MSS SP-80,
3/8" Thru 4"

RISING STEM Solder End-Union Bonnet

IB648
150 WSP-300 WOG, MSS SP-80,
3/8" Thru 3"



IB648

QUICK-OPENING GATE VALVES Threaded Ends

IB610
150 WSP-300 WOG, Quick-Open
Lever Handle, 1/2" Thru 4"

RISING STEM Threaded End-Union Bonnet

IB617
125 WSP- 200 WOG, MSS SP-80,
1/4" Thru 3"

IB629
150 WSP-300 WOG, MSS SP-80,
1/4" Thru 3"

IB650
200 WSP-400 WOG, Cu-Ni Seat
Ring, MSS SP-80, 1/4" Thru 2"

IB651
200 WSP-400 WOG,
Stainless-Steel Seat Ring, MSS
SP-80, 1/4" Thru 3"

IB652
300 WSP-1000 WOG, Cu-Ni Seat
Ring, MSS SP-80, 1/4" Thru 2"

IB654
300 WSP-1000 WOG,
Stainless-Steel Seat Ring, MSS
SP-80, 1/4" Thru 3"

Press x Press Ends - Union Bonnet

IB617 P2
200 PSIG @ 250°F, MSS SP-80,
1/2" Thru 2"



IB610



IB629

The information presented on this sheet is correct at the time of publication. Hammond Valve reserves the right to change design, and/or material specifications without notice. For the Installation, Operation and Maintenance Manual (IOM) see the Technical/Service Information section on our website. For the most current information access www.hammondvalve.com Hammond Valve is a registered trade mark of Milwaukee Valve Company.

BRONZE GLOBE & ANGLE VALVES



IB440 P2

GLOBE THREADED BONNET

Threaded Ends

IB440

125 WSP-200 WOG, MSS SP-80, Bronze Disc, 1/8" Thru 3"

IB415

200 WSP-400 WOG, MSS SP-80, Needle Disc, 1/8" Thru 3/4"

Press x Press Ends

IB440 P2

200 PSIG @ 250°F, MSS SP-80, Bronze Disc, 1/2" Thru 2"

GLOBE UNION BONNET

Threaded Ends

IB413T

150 WSP-300 WOG, MSS SP-80, PTFE Disc, 1/8" Thru 3"

IB412

300 WSP-1000 WOG, MSS SP-80, Bronze Disc, 1/4" Thru 2"

IB434

200 WSP-400 WOG, MSS SP-80, SS Seat & Disc, 1/4" Thru 2"

IB444

300 WSP-1000 WOG, MSS SP-80, SS Seat & Disc, 1/4" Thru 2"

Press Ends

IB413T P2

200 PSIG @ 250°F, MSS SP-80, PTFE Disc, 1/2" Thru 2"

GLOBE THREADED BONNET

Solder Ends

IB418

125 WSP-200 WOG, MSS SP-80, Bronze Disc, 3/8" Thru 2"



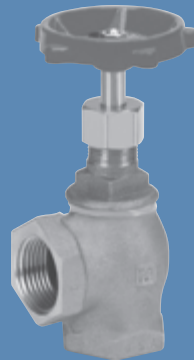
IB423

GLOBE UNION BONNET

Solder Ends

IB423

150 WSP-300 WOG, MSS SP-80, PTFE Disc, 1/2" Thru 3"



IB463

ANGLE THREADED BONNET

Threaded Ends

IB463

125 WSP-200 WOG, MSS SP-80, Bronze Disc, 1/4" Thru 2-1/2"



IB454T

ANGLE UNION BONNET

Threaded Ends

IB454T

150 WSP-300 WOG, MSS SP-80, PTFE Disc, 1/4" Thru 2"



IB418

The information presented on this sheet is correct at the time of publication. Hammond Valve reserves the right to change design, and/or material specifications without notice. For the Installation, Operation and Maintenance Manual (IOM) see the Technical/Service Information section on our website. For the most current information access www.hammondvalve.com Hammond Valve is a registered trade mark of Milwaukee Valve Company.

BRONZE CHECK VALVES



IB940

HORIZONTAL SWING CHECK

Threaded Ends, Bronze

IB904
125 WSP-200 WOG, MSS SP-80,
Bronze Disc, 1/4" Thru 3"

IB940
125 WSP-200 WOG, MSS SP-80,
PTFE Disc, 1/4" Thru 2"

IB946
150 WSP-300 WOG, MSS SP-80,
PTFE Disc, 1/4" Thru 2"

Press x Press Ends, Bronze

IB904 P2
200 PSIG @ 250°F, MSS SP-80,
Bronze Disc, 1/2" Thru 2"

HORIZONTAL SWING CHECK

Solder Ends, Bronze

IB912
125 WSP-200 WOG, MSS SP-80,
Bronze Disc, 3/8" Thru 3"

IB945
150 WSP-300 WOG, MSS SP-80,
PTFE Disc, 1/2" Thru 2"
Also available w/ Bronze Disc



IB912

SPRING-LOADED LIFT CHECK

Threaded Ends, Bronze

IB943
250 WOG, MSS SP-80, BUNA
Disc, 3/8" Thru 2"

Press Ends, Bronze

IB943 P2
200 PSIG @ 200°F, MSS SP-80,
Buna Disc, 1/2" Thru 2"



IB943



IB947

SPRING-LOADED LIFT CHECK

Solder Ends, Bronze

IB947
250 WOG, MSS SP-80, BUNA
Disc, 3/8" Thru 2"

HORIZONTAL SWING CHECK – Y PATTERN

Threaded Ends, Bronze

IB949
300 WSP-600 WOG, MSS SP-80,
Bronze Disc, 1/4" Thru 3"

IB944
200 WSP-400 WOG, MSS SP-80,
Bronze Disc, 1/4" Thru 3"

509Y
125 WSP-200 WOG, MSS SP-80,
Bronze Disc, Y pattern,
1/4" Thru 3"

515Y
150 WSP-300 WOG, MSS SP-80,
Bronze Disc, Y pattern,
1/4" Thru 3"

Press x Press Ends, Bronze

509Y P2
200 PSIG @ 250°F, MSS SP-80,
Y pattern, Bronze Disc, 1/2" Thru 2"



IB949

SWING CHECK

Press x Press Ends, Brass

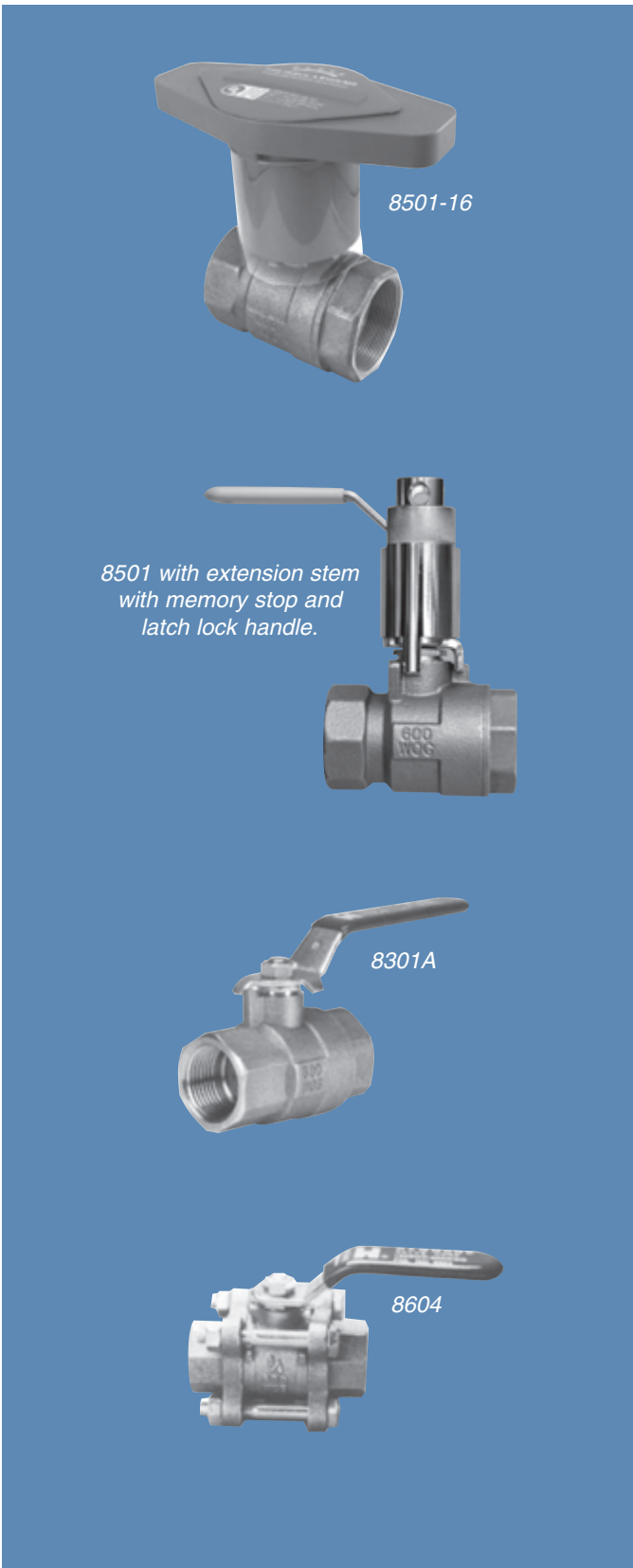
969 200 PSIG @ 250°F, Brass
Disc, Integral Seat, Press x Press
1/2" Thru 2"



969

The information presented on this sheet is correct at the time of publication. Hammond Valve reserves the right to change design, and/or material specifications without notice. For the Installation, Operation and Maintenance Manual (IOM) see the Technical/Service Information section on our website. For the most current information access www.hammondvalve.com Hammond Valve is a registered trade mark of Milwaukee Valve Company.

COMMERCIAL BALL VALVES



2-PIECE BRONZE

Standard Port

8501 600 WOG 150 WSP, Threaded, 1/4" Thru 3"

8501-16 600 WOG 150 WSP, Threaded, Insulated handle 1/4" Thru 3"

8503 600 WOG 150 WSP, Stainless Ball & Stem, Threaded, 1/4" Thru 3"

8501E 600 WOG 150 WSP, Threaded With Exhaust Port, Latch Lock Handle, 1/4" Thru 2"

8501H 600 WOG, Threaded With Hose, Cap And Chain, 1/2" And 3/4"

8513 600 WOG 150 WSP, Stainless Ball & Stem, Solder, 3/8" Thru 3"

8501H 600 WOG, Solder With Hose, Cap And Chain, 1/2" And 3/4"

8501M 600 WOG 150 WSP, Threaded With Male Threaded End, 1/4" Thru 2"

BA-480B* 200 PSIG @ 250°F, Press X Press, ANSI/NSF 61-8, 1/2" Thru 3"

8511 600 WOG 150 WSP, Solder, 3/8" Thru 3"

BA-480S* 200 PSIG @ 250°F, Press X Press, ANSI/NSF 61-8, 1/2" Thru 3" with Stainless Steel Ball & Stem

BA-490B* 200 PSIG @ 250°F, Press X Threaded, ANSI/NSF 61-8, 1/2" Thru 2"

BA-490S* 200 PSIG @ 250°F, Press X Threaded, ANSI/NSF 61-8, 1/2" Thru 2" with Stainless Steel Ball & Stem

BA-481B 200 PSIG @ 250°F, Press X Press, Extension Stem with memory stop 1/2" Thru 3"

BA-491B* 200 PSIG @ 250°F, Press X Threaded, Extension Stem with memory stop, ANSI/NSF 61-8, 1/2" Thru 2"

Full Port

8301A 600 WOG 150 WSP, Threaded, 1/4" Thru 2"

8303A 600 WOG 150 WSP, Threaded, Stainless Steel Ball & Stem, 1/4" Thru 2"

8311A 600 WOG 150 WSP, Solder, 3/8" Thru 2"

8313A 600 WOG 150 WSP, Stainless Ball & Stem, Solder, 3/8" Thru 2"

3-PIECE BRONZE*

Full Port

8604 600 WOG 150 WSP, Threaded Ends, 1/4" Thru 2"

8603 600 WOG 150 WSP, Threaded Ends, Stainless Steel Ball & Stem, 1/4" Thru 2"

8614 600 WOG 150 WSP, Solder Ends, 3/8" Thru 2"

8613 600 WOG 150 WSP, Solder Ends, Stainless Steel Ball & Stem, 3/8" Thru 2"

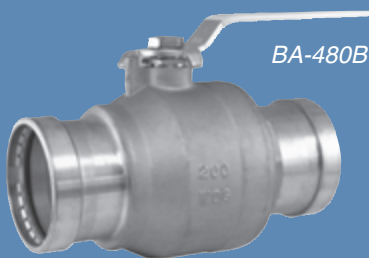
* Available with **THE INSULATOR/MS** Handle 1/4" -2"

The information presented on this sheet is correct at the time of publication. Hammond Valve reserves the right to change design, and/or material specifications without notice. For the Installation, Operation and Maintenance Manual (IOM) see the Technical/Service Information section on our website. For the most current information access www.hammondvalve.com Hammond Valve is a registered trade mark of Milwaukee Valve Company.

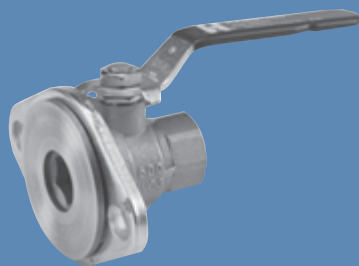
COMMERCIAL BALL VALVES



8901



BA-480B



8100

2-PIECE BALL FORGED BRASS

Standard Port

8201 400 WOG 150 WSP, Threaded, ANSI/NSF 61-8, 1/4" Thru 4"

8211 400 WOG 150 WSP, Solder, ANSI/NSF 61-8, 3/8" Thru 3"

Full Port**

8901 600 WOG, Threaded, CSA/AGA/UL/FM/CGA Approved, ANSI/NSF 61-8, 1/4" Thru 4" *

8911 600 WOG, Solder Heavy Pattern, ANSI/NSF 61-8, 1/2" Thru 4" *

2-PIECE BALL FORGED BRASS PRESS

Full Port

BA-480B 200 PSIG @ 250 Degrees, Press X Press, ANSI/NSF 61-8, 1/2" Thru 3"

BA-490B 200 PSIG @ 250 Degrees, Press X Threaded, ANSI/NSF 61-8, 1/2" Thru 2"

BA-480BH 200 PSIG @ 250 Degrees, Press X Hose, ANSI/NSF 61-8, 1/2" Thru 3/4"

BA-481B 200 PSIG @ 250 Degrees, Press X Press, Extension Stem 1/2" Thru 3"

2-PIECE CIRCULATOR-FLANGE

8100 Brass Body, Threaded Ends, Full Port, 100 SWP 600 WOG, Sold in Pkg of 2, 3/4" Thru 1 1/4"

8111 Brass Body, Sweat Ends, Full Port, 100 SWP 600 WOG, Sold in Pkg of 2, 3/4" Thru 1 1/4"

* Available with **THE INSULATOR/MS** Handle 1/4" -2"

** CSA/AGA/UL/FM/CGA approval up to 2"

The information presented on this sheet is correct at the time of publication. Hammond Valve reserves the right to change design, and/or material specifications without notice. For the Installation, Operation and Maintenance Manual (IOM) see the Technical/Service Information section on our website. For the most current information access www.hammondvalve.com Hammond Valve is a registered trade mark of Milwaukee Valve Company.

INDUSTRIAL BALL VALVES



2-PIECE, THREADED

Standard Port

8433

Standard Port, 2000 WOG 1/4" Thru 1", 1500 WOG 1-1/4" Thru 2", Stainless Steel Body, Stainless Steel Ball & Stem, Threaded Ends, Actuator Mounting Pads 1/4" Thru 2"

BA260

Standard Port, 2000 WOG 1/4" Thru 1", 1500 WOG 1-1/4" Thru 2", Carbon Steel Body, Stainless Steel Ball & Stem, Threaded Ends, Actuator Mounting Pads 1/4" Thru 2"

BA260

Full Port, 1000 WOG, Stainless Steel Body and Ball, RPTFE Seats, Locking Handle, Actuator Mounting Pads, 1/4" thru 3"

3-PIECE, FULL PORT

8633

1000 WOG, Stainless Steel Body, Stainless Steel Ball & Stem, PTFE V-Ring Packing, Threaded Ends, Actuator Mounting Pads 1/4" Thru 2"

8623

1000 WOG, Carbon Steel Body, Stainless Steel Ball & Stem, PTFE V-Ring Packing, Threaded Ends, Actuator Mounting Pads 1/4" Thru 2"

The information presented on this sheet is correct at the time of publication. Hammond Valve reserves the right to change design, and/or material specifications without notice. For the Installation, Operation and Maintenance Manual (IOM) see the Technical/Service Information section on our website. For the most current information access www.hammondvalve.com Hammond Valve is a registered trade mark of Milwaukee Valve Company.

2-PIECE BRONZE BALL VALVE

Standard Port

- UP8501 ****
600 WOG, MSS SP-110, Threaded, 1/4" Thru 3"
- UP8503 ****
600 WOG, MSS SP-110, Stainless Steel Ball & Stem, Threaded, 1/4" Thru 3"
- UP8501H ****
600 WOG, Threaded with Hose, Cap and Chain 1/2" and 3/4"
- UP8501 P2**
MSS SP-110, 200 PSIG @ 250°F, Press X Press, 1/2" Thru 2"
- UP8503 P2**
MSS-SP-110, 200 PSIG @ 250°F, Stainless Steel Ball and Stem, Press X Press, 1/2" Thru 2"
- UP8511 ****
600 WOG, MSS SP-110, Solder, 3/8" Thru 2"
- UP8513 ****
600 WOG, MSS SP-110, Stainless Steel Ball & Stem, Solder, 3/8" Thru 2"
- UP8513H ****
600 WOG, Solder with Hose, Cap and Chain 1/2" Thru 3/4"

Full Port

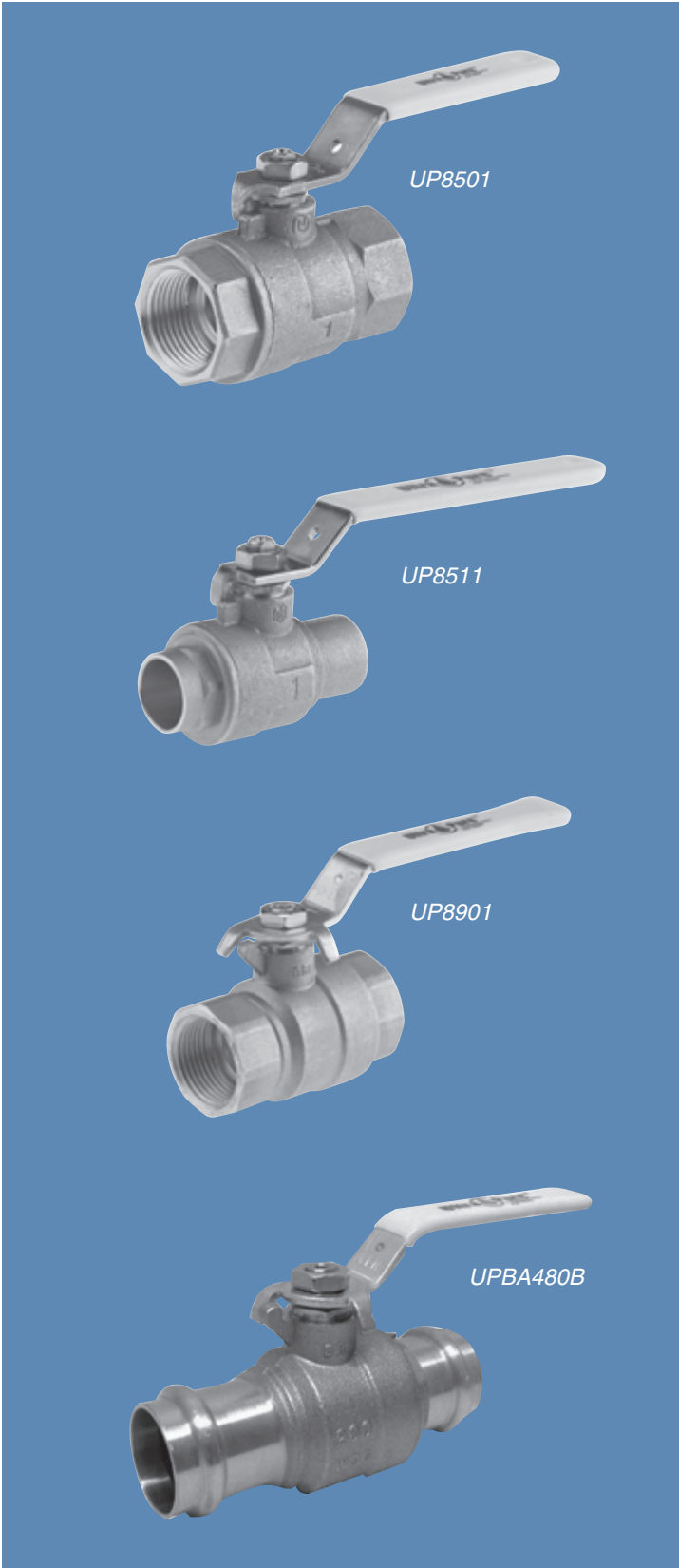
- UP8301A ****
600 WOG, MSS SP-110, Threaded, 1/4" Thru 2"
- UP8303A ****
600 WOG, MSS SP-110, Stainless Steel Ball & Stem, 1/4" Thru 2"
- UP8501H P1**
MSS SP-110, 200 PSIG @ 250°F, Press X Hose, 1/2" and 3/4"
- UP8301A P2**
MSS SP-110, 200 PSIG @ 250°F, Press X Press, 1/2" Thru 2"
- UP8303A P2**
MSS-SP-110, 200 PSIG @ 250°F, Stainless Steel Ball and Stem, Press X Press, 1/2" Thru 2"
- UP8311A ****
600 WOG, MSS SP-110, Solder, 1/2" Thru 2"
- UP8313A ****
600 WOG, MSS SP-110, Stainless Steel Ball & Stem, Solder, 1/2" Thru 2"

2-PIECE FORGED BRASS BALL VALVE

- UP8901 ****
600 WOG, MSS SP-110, UL/CSA Rated to 2", Threaded, 1/4" Thru 3"
- UP8911 ****
600 WOG, MSS SP-110, Solder, 1/2" Thru 3"

Full Port

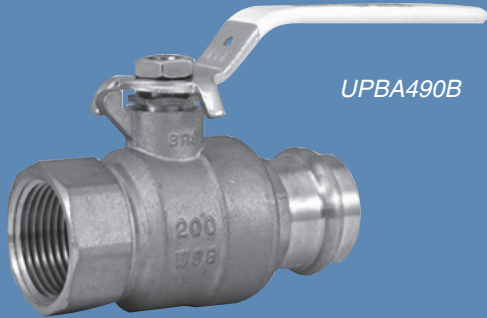
- UPBA-480B**
MSS SP-110, 200 PSIG @ 250°F, Press X Press, 1/2" Thru 4"
- UPBA-480S**
MSS SP-110, 200 PSIG @ 250°F, Stainless Steel Ball and Stem, Press X Press, 1/2" Thru 4"
- UPBA-480SH**
MSS SP-110, 200 PSIG @ 250°F, Press X Hose, 1/2" and 3/4"
- UPBA-481B**
MSS SP-110, 200 PSIG @ 250°F, Press X Press, Extension stem with memory stop, 1/2" Thru 2"
- UPBA-481S**
MSS SP-110, 200 PSIG @ 250°F, Stainless Steel Ball and Stem, Press X Press, Extension stem with memory stop, 1/2" Thru 2"



* Designed in accordance with the requirement of California AB 1953, Vermont S 152 and Senate law S53874.

** Available with **THE INSULATOR/MS Handle** 1/4" -2"

The information presented on this sheet is correct at the time of publication. Hammond Valve reserves the right to change design, and/or material specifications without notice. For the Installation, Operation and Maintenance Manual (IOM) see the Technical/Service Information section on our website. For the most current information access www.hammondvalve.com Hammond Valve is a registered trade mark of Milwaukee Valve Company.



2-PIECE FORGED BRASS BALL VALVE
(continued)

UPBA-490B

MSS SP-110, 200 PSIG @ 250°F, Press X Threaded, 1/2" Thru 4"

UPBA-490S

MSS SP-110, 200 PSIG @ 250°F, Stainless Steel Ball and Stem, Press X Threaded, 1/2" Thru 4"

UPBA-490SH

MSS SP-110, 200 PSIG @ 250°F, Press X Hose, 1/2" and 3/4"

UPBA-491B

MSS SP-110, 200 PSIG @ 250°F, Press X Threaded, Extension stem with memory stop, 1/2" Thru 2"

UPBA-491S

MSS SP-110, 200 PSIG @ 250°F, Stainless Steel Ball and Stem, Press X Threaded, Extension stem with memory stop, 1/2" Thru 2"

3-PIECE FORGED BRONZE BALL VALVE

Full Port**

UP8603

600 WOG, MSS SP-110, Stainless Steel Ball & Stem, Threaded, 1/4" Thru 3"

UP8603 P2

MSS-SP-110, 200 PSIG @ 250°F, Stainless Steel Ball and Stem, Press X Press, 1/2" Thru 2"

UP8604

600 WOG, MSS SP-110, Threaded, 1/4" Thru 3"

UP8604 P2

MSS SP-110, 200 PSIG @ 250°F, Press X Press, 1/2" Thru 2"

UP8613

600 WOG, MSS SP-110, Stainless Steel Ball & Stem, Solder, 3/8" Thru 2"

UP8614

600 WOG, MSS SP-110, Solder, 3/8" Thru 3"



BRONZE GATE VALVE

Non-Rising Stem, Threaded Bonnet

UP645**

Threaded, 300 WOG, MSS SP-80, 3/8" Thru 2"

UP645 P2

200 PSIG @ 250°F, Press Ends, MSS SP-80, 1/2" Thru 2"

UP647**

Solder, 300 WOG, MSS SP-80, 3/8" Thru 2"

Rising Stem, Threaded Bonnet

UP640**

Threaded, 300 WOG, MSS SP-80, 1/4" Thru 2"

UP640 P2

250 PSIG @ 250°F, Press Ends, MSS SP-80, 1/2" Thru 2"

UP635

Solder, 300 WOG, MSS SP-80, 1/2" Thru 2"



BRASS GATE VALVE

Non-Rising Stem, Threaded Bonnet

UP667

Threaded, 200 WOG, 1/4" Thru 2"

UP668

Solder, 200 WOG, 1/2" Thru 2"

* Designed in accordance with the requirement of California AB 1953, Vermont S 152 and Senate law S53874.

BRONZE GLOBE VALVE

Threaded Bonnet, Bronze Disc

UP440**

Threaded, 300 WOG, MSS SP-80, 1/8" Thru 2"

UP440 P2

200 PSIG @ 250°F, Press Ends, MSS SP-80, 1/2" Thru 2"

UP418

Solder, 300 WOG, MSS SP-80, 3/8" Thru 2"

BRONZE CHECK VALVE

Horizontal Swing Check

UP904**

Bronze Disc, Threaded Ends, 300 WOG, MSS SP-80, 3/8" Thru 2"

UP904 P2

200 PSIG @ 250°F, Bronze Disc, Press Ends, MSS SP-80, 1/2" Thru 2"

UP912

Bronze Disc, Solder Ends, 300 WOG, MSS SP-80, 3/8" Thru 2"

Spring Load Lift Check

UP943**

PTFE Disc, Threaded Ends, 250 WOG, MSS SP-80, 3/8" Thru 2"

UP943 P2

200 PSIG @ 250°F, PTFE Disc, Press Ends, MSS SP-80, 1/2" Thru 2"

UP947

PTFE Disc, Solder Ends, 250 WOG, MSS SP-80, 3/8" Thru 2"

BRASS CHECK VALVE

Swing Check

UP967

Brass Disc, Threaded Ends, 200 WOG, 3/8" Thru 2"

UP968

Brass Disc, Solder Ends, 200 WOG, 3/8" Thru 2"

UP969

Brass Disc, Press x Press Ends, 200 PSIG @ 250°F, 1/2" Thru 2"

BUTTERFLY

6411-00/6411-01/6411-03

Cast Iron Body, Aluminum Bronze Disc, EPDM Liner, Bi Directional Dead End Service to 200 PSI Max, 2" Thru 12"

6411-01/6411-03

Cast Iron Body, Lug, Aluminum Bronze Disc, EPDM Liner, Bi Directional Dead End Service to 200 PSI Max 2" Thru 12", 14" Thru 24"

6211-03

Cast Iron Body, Lug, Aluminum Bronze Disc, EPDM Liner, Bi Directional Dead End Service to 200 PSI Max, 2" Thru 12", 150 PSI Max, 14" Thru 24"



The information presented on this sheet is correct at the time of publication. Hammond Valve reserves the right to change design, and/or material specifications without notice. For the Installation, Operation and Maintenance Manual (IOM) see the Technical/Service Information section on our website. For the most current information access www.hammondvalve.com Hammond Valve is a registered trade mark of Milwaukee Valve Company.

PLUMBING AND HEATING VALVES

GATE VALVES



606

606
125 WSP – 200 WOG (to 353°F) Rating, Bronze Body, Threaded Ends, Threaded Bonnet, Non-Rising Stem, Solid Wedge, Integral Seat, Iron Handwheel, Sizes 1/4" thru 3"

607
125 WSP – 200 WOG (to 353°F) Rating, Bronze Body, Solder Ends, Threaded Bonnet, Non-Rising Stem, Solid Wedge, Integral Seat, Iron Handwheel, Sizes 3/8" thru 3"

667*
200 WOG Rating, Forged Brass Body, Threaded Ends, Threaded Bonnet, Non-Rising Stem, Solid Wedge, Integral Seat, Iron Handwheel, ANSI/NSF 61 1/2" thru 2", Sizes 1/4" thru 4", International

668*
200 WOG Rating, Forged Brass Body, Solder Ends, Threaded Bonnet, Non-Rising Stem, Solid Wedge, Integral Seat, Iron Handwheel, ANSI/NSF 61 1/2" thru 2", Sizes 3/8" thru 3", International

668-20
200 WOG Rating, Drainable Brass Body, Solder Ends, Threaded Bonnet, Non-Rising Stem, Solid Wedge, Integral Seat, Iron Handwheel, Sizes 1/2" thru 1", International

567*
150 WOG Rating, Forged Brass Body, Threaded Ends, Threaded Bonnet, Non-Rising Stem, Solid Wedge, Integral Seat, Iron Handwheel, ANSI/NSF 61 1/2" thru 2", Sizes 1/4" thru 4", International

568*
150 WOG Rating, Forged Brass Body, Solder Ends, Threaded Bonnet, Non-Rising Stem, Solid Wedge, Integral Seat, Iron Handwheel, ANSI/NSF 61 1/2" thru 2", Sizes 1/2" thru 2", International

***CAUTION**
The 667, 668, 567 and 568 Gate Valves are NOT recommended for use in buried service where water or soil is aggressive. Such applications can cause a negative chemical reaction to the zinc content of these valves.



667



668-20



967

CHECK VALVES

967 Swing Check, 200 WOG Rating, Brass Body, Threaded Ends, Brass Disc, Sizes 1/2" thru 4"

968 Swing Check, 200 WOG Rating, Brass Body, Solder Ends, Brass Disc, Sizes 1/2" thru 2"

943 Spring Loaded Lift Check, 250 WOG Rating, Bronze Body, Threaded Ends, Buna Seat, Sizes 3/8" thru 2"

947 Spring Loaded Lift Check, 250 WOG Rating, Bronze Body, Solder Ends, Buna Seat, Sizes 3/8" thru 2"



547

WATER METER ANGLE GLOBE VALVES

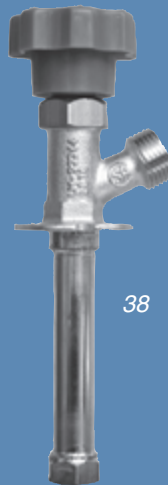
547 125 WOG Rating, Bronze Body with Drain, Flare Solder End, X Threaded End, Buna Disc, Sizes 3/4" x 3/4" – 1" x 1" – 3/4" x 1/2" – 1" x 3/4"

548 125 WOG Rating, Bronze Body, Flare Solder End X Threaded End, Buna Seat, Sizes 3/4" x 3/4" – 1" x 1" – 3/4" x 1/2" – 1" x 3/4"

FROST PROOF SILL COCKS

38 150 WWP, Chrome Plated Body, Male IPS X Hose End, 1/2" Combination Sweat & IPS, Large Plastic Handle, Buna-N Seat, Sizes 4" thru 14"

58 150 WWP, Anti-Siphon Vacuum Breaker, Chrome Plated Body, Combination Sweat & Hose End, Large Plastic Handle, Buna-N Seat, Male IPS x Hose End Sizes 6" thru 14"



38

INTERNATIONAL STOP VALVES

445 150 WWP, Brass Body, Threaded Ends, Iron Handwheel, Large Water Ways, Adjustable Packing Nut, Buna-N Seat, Sizes 1/2" & 3/4"

446 150 WWP, Brass Body, Solder Ends, Iron Handwheel, Large Water Ways, Adjustable Packing Nut, Buna-N Seat, Sizes 1/2" & 3/4"

545 150 WWP, Drainable Brass Body, Threaded Ends, Iron Handwheel, Large Water Ways, Adjustable Packing Nut, Buna-N Seat, Sizes 1/2" & 3/4"

546 150 WWP, Drainable Brass Body, Solder Ends, Iron Handwheel, Large Water Ways, Adjustable Packing Nut, Buna-N Seat, Sizes 1/2" & 1"

549 150 WWP, Drainable Brass Body, Compression Ends, Iron Handwheel, Large Water Ways, Adjustable Packing Nut, Buna-N Seat, Sizes 1/2" & 3/4"



445



710



1034



2002

INTERNATIONAL HOSE END VALVES

710

150 WWP, Brass Body, Male IPS X Hose End (1/2" Combination Threaded & Solder End), Iron Handwheel, Large Water Ways, Adjustable Packing Nut, Buna-N Seat, Sizes 1/2" & 3/4"

712

150 WWP, Brass Body, Female IPS X Hose End, Iron Handwheel, Large Water Ways, Adjustable Packing Nut, Buna-N Seat, Sizes 1/2" & 3/4"

713

150 WWP, Brass Body, Solder X Hose End, Iron Handwheel, Large Water Ways, Adjustable Packing Nut, Buna-N Seat, Size 3/4"

1032

150 WWP, Brass Body, Female IPS X Hose End, Iron Handwheel, Large Water Ways, Adjustable Packing Nut, Buna-N Seat, Sizes 1/2" & 3/4"

1034

150 WWP, Brass Body, Solder End X Hose End, Iron Handwheel, Large Water Ways, Adjustable Packing Nut, Buna-N Seat, Sizes 1/2" & 3/4"

1035

150 WWP, Bent Nose Brass Body, Female IPS X Hose End, Iron Handwheel, Large Water Ways, Adjustable Packing Nut, Buna-N Seat, Sizes 1/2" & 3/4"

2002

150 WWP, Brass Body, Male IPS X Hose End (1/2" Combination Threaded & Solder End), Large Water Ways, Adjustable Packing Nut, T-Handle, Buna-N Seat, Sizes 1/2" & 3/4"

2004

150 WWP, NO-KINK Brass Body, Male IPS X Hose End, Large Water Ways, Adjustable Packing Nut, T-Handle, Buna-N Seat, Sizes 1/2" & 3/4"

2005

150 WWP, NO-KINK Brass Body, Female IPS X Hose End, Large Water Ways, Buna-N Seat, Sizes 1/2" & 3/4"

2006

150 WWP, SAMPLING VALVE, Brass Body, Male IPS (1/2" Combination Threaded & Solder End), Large Water Ways, Adjustable Packing Nut, T-Handle, Buna-N Seat, Sizes 1/2" & 3/4"

2007

150 WWP, Ball Valve, Brass Body, Male IPS X Hose End (1/2" Combination Threaded & Solder End), Large Water Ways, Adjustable Packing Nut, T-Handle, Teflon Seat, Sizes 1/2" & 3/4"

PLUMBING AND HEATING VALVES



879-01



100-25



102

INTERNATIONAL GAS VALVES

875-01

CSA Approved, 1/2 & 5 psi Rating, Lever Handle, Brass Body, PTFE Seats, Threaded Ends, Chrome Plated Ball, Sizes 1/2" thru 1"

876-01

CSA Approved, 1/2 & 5 psi Rating, T-Handle, Brass Body, PTFE Seats, Threaded Ends, Chrome Plated Ball, Sizes 1/2" & 3/4"

880

CSA Approved, 1/2 & 5 psi Rating, Lever Handle, 1 Piece Brass Body, PTFE Seats, Threaded Ends, Chrome Plated Ball, Sizes 1/2" & 3/4"

879-01

Female IPS X Flare, CSA Approved, 1/2 & 5 psi Rating, Lever Handle, Brass Body, PTFE Seats, Chrome Plated Ball, Sizes: 3/8" x 3/8" – 1/2" x 1/2"

878-01

Flare X Flare, CSA Approved, 1/2 & 5 psi Rating, Lever Handle, Brass Body, PTFE Seats, Chrome Plated Ball, Sizes: 3/8" x 3/8" – 1/2" x 1/2"

HEATING VALVES

100-25

15 WSP – 60 psi Hot Circulated Water Rating, Brass Body, Female IPS X Male IPS Union End, EPDM Disc, Adjustable Packing Nut, Heat Resistant Handwheel, Sizes 1/2" thru 1-1/2"

200

Gravity Hot Water Rating, Brass Body, Female IPS X Male IPS Union End, EPDM Disc, Adjustable Packing Nut, Heat Resistant Handwheel, Sizes 1/2" thru 1-1/4"

102

125 WSP – 200 WOG (to 353°F) Gate Valve Rating, Bronze Body, Male Union X Female IPS, Screw-Over Bonnet, Non-Rising Stem, Solid Wedge, Adjustable Packing Nut, Heat Resistant Handwheel, Sizes 1/2" thru 1-1/4"

101

Gravity Hot Water Rating, Brass Body, Female Sweat X Male IPS Union End, EPDM Disc, Adjustable Packing Nut, Heat Resistant Handwheel, Sizes 1/2" & 3/4"

108

15 WSP – 60 psi Convector Steam Angle Rating, Bronze Body, Female IPS X Female IPS Union End, EPDM Disc, Adjustable Packing Nut, Heat Resistant Handwheel, Sizes 1" thru 1-1/4"

BALANCE/CIRCULATOR VALVES & ELBOWS

8211-15

150 WSP – 400 WOG Rating, SLOTTED STEM, 2 Piece Brass Body, Solder Ends, Blow-out Proof Stem, PTFE Seats & Packing, Chrome Plated Ball, Sizes 1/2" thru 1"



8211-15

8201-15

150 WSP – 400 WOG Rating, SLOTTED STEM, 2 Piece Brass Body, Threaded Ends, Blow-out Proof Stem, PTFE Seats & Packing, Chrome Plated Ball, Sizes 1/2" thru 1"



201

201

60 psi Hot Water Rating, Bronze Body, Solder End X Male Union, Blow-out Proof Stem, PTFE Seats, Solid Chrome Plated Ball, Heat Resistant Handle, Sizes 1/2" & 3/4"

300

Brass Body, Female IPS X Male IPS Union End, Sizes 1/2" thru 1-1/4"

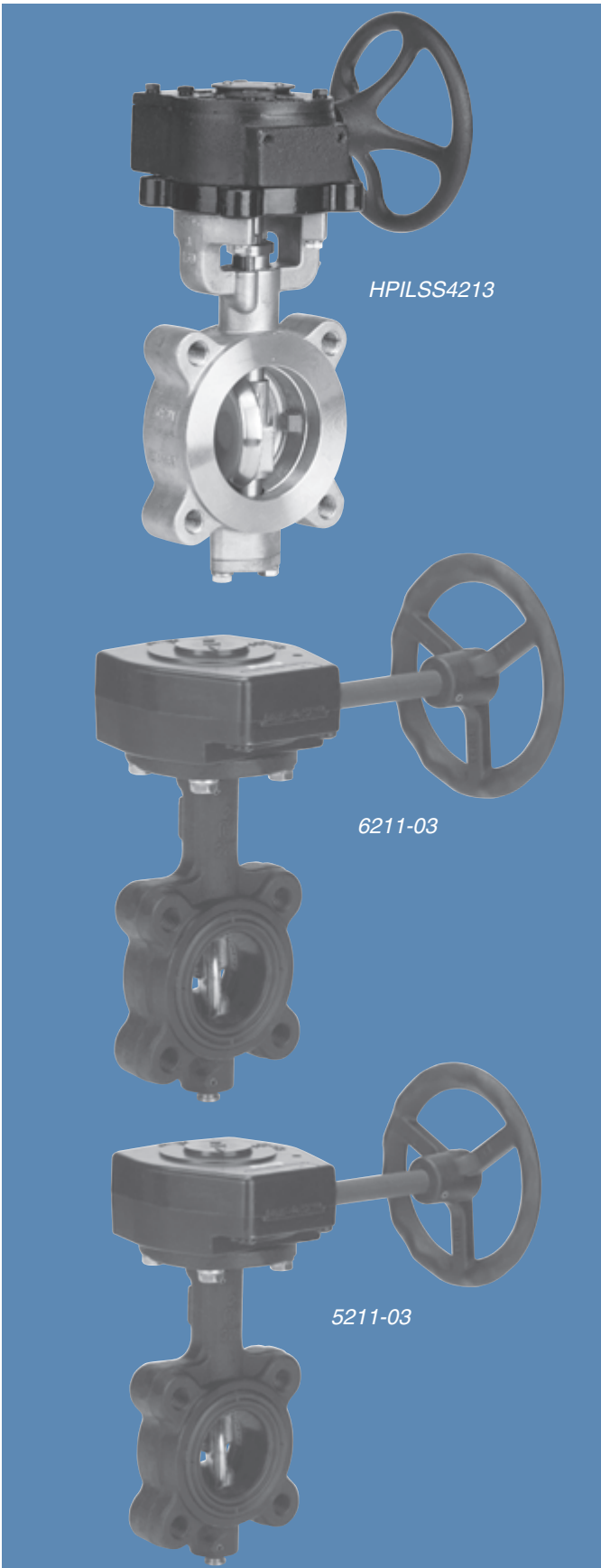


300

302

Brass Body, Female Solder X Male IPS Union End, Sizes 1/2" & 3/4"

BUTTERFLY VALVES



HP Series High Performance Butterfly

Double offset valve designed to MSS SP-68, ASME B16.34, and API 609, Category B. Available in lug or wafer body, ANSI Class 150 in sizes 2 -1/2" – 24" and ANSI Class 300 in sizes 2 -1/2" – 16"

Body: A216 WCB carbon steel or ASTM A351 CF8M stainless steel

Disc: ASTM A351 CF8M stainless steel

Stem: 17-4PH stainless steel or 316

Seats: RTFE standard, Virgin PTFE, UHMWPE and others optional

These valves feature a double offset seat and disc design for superior sealing with no leakage and minimal seat contact and wear. The valves are available with on-board actuation direct from the factory, 10 position locking lever handles (up to 8 inch), gear operators on all valves, for other actuation options or accessories, consult the factory.

6000 Series – Industrial Butterfly

Concentric valve to MSS SP-67, Available in lug or wafer body, 2" – 48" 2"-12" rated at 200 WOG, 14"-48" rated at 150 WOG

Body: Cast iron ASTM A126 Class B or Ductile iron ASTM A536 65-45-12

Disc: Ni plated DI, AIBr, or stainless steel, nylon and epoxy coated optional

Stem: 416 or 316 stainless steel

Liner: EPDM, Buna, FDA Neoprene, PTFE, Hypalon, and many others optional

These valves feature a phenolic backed rubber seat with optimized disc and stem design for reliable sealing, low torque, and long life. Lug butterfly valves 2" through 12" are bi-directional dead end service to 200 psi max. BUNA and EPDM only. All others 200 psi. uni-directional field repairable. Valves 14" through 24" rated for uni-directional dead end service to 150 psig. The valves are available with on-board actuation direct from the factory, 10 position locking lever handles (up to 12 inch), gear operators, or other options – consult the factory.

*Available in Low Lead 6411-00/6411-01/6411-03

5000 Series – Commercial Butterfly

Concentric valve to MSS SP-67, Available in lug or wafer body, 2" – 24" 2"-12" rated at 200 WOG, 14"-24" rated at 150 WOG

Body: Cast iron ASTM A126 Class B

Disc: AIBr

Stem: 416 stainless steel

Liner: EPDM

These valves are based on our 6000 Series, but intended for commercial application in HVAC and similar systems. The valves feature a phenolic backed rubber seat with optimized disc and stem design for reliable sealing, low torque, and long life. Lug butterfly valves 2" through 12" are bi-directional dead end service to 200 psi max. Valves 14" through 24" rated for uni-directional dead end service to 150 psig. The valves are available with on-board actuation direct from the factory, 10 position locking lever handles (up to 12 inch), gear operators, or other options – consult the factory.

The information presented on this sheet is correct at the time of publication. Hammond Valve reserves the right to change design, and/or material specifications without notice. For the Installation, Operation and Maintenance Manual (IOM) see the Technical/Service Information section on our website. For the most current information access www.hammondvalve.com Hammond Valve is a registered trade mark of Milwaukee Valve Company.

BUTTERFLY VALVES & ACTUATION

H Series – High-Pressure Industrial Butterfly

Concentric valve to MSS SP-67, Available in lug or wafer body, 2" - 24" 2"-12" rated at 250 WOG, 14"-24" rated at 200 WOG

Body: Cast iron ASTM A126 Class B or Ductile iron ASTM A536 65-45-12

Disc: Ni Plated DI, AIBr, or stainless steel, nylon and epoxy coated optional

Stem: 416 or 316 Stainless steel

Liner: EPDM, Buna, Viton-GFLT, FDA Neoprene, PTFE, Hypalon, and many others optional

The H Series is tested and rated for higher-pressure services. These valves feature a phenolic backed rubber seat with optimized disc and stem design for reliable sealing, low torque, and long life. Valves are dead end rated in the primary direction to 150 psig, and in the reverse direction to 100 psig (through 12"). Valves 14" through 24" rated for uni-directional dead end service to 150 psig. The valves are available with on-board actuation direct from the factory, 10 position locking lever handles (up to 12 inch), gear operators or other options – consult the factory.

PNEUMATIC ACTUATION

2-Piece Ball Valves

Available on threaded-end and socket-weld-end valves
Available on bronze, carbon-steel and stainless-steel valves
Available on 1/2" to 2" valves

Actuation Options

Double-Acting Actuators
Spring-Return Actuators
Solenoid Valves
Actuator Brackets
Limit Switches
Valve Positioners

Butterfly Valves

Available on HP Series High Performance Butterfly
Available in wafer and lugged patterns
Available on Class 150 2 1/2" - 24", Class 300 2 1/2" - 16"

Available on rubber-seated valves
Available on wafer and lugged patterns
Available on 2" to 48" valves

Actuation Options

Double-Acting Actuators
Spring-Return Actuators
Solenoid Valves
Actuator Brackets
Limit Switches
Valve Positioners

ELECTRIC ACTUATION

2-Piece Ball Valves

Available on threaded-end and socket-weld-end valves
Available on bronze, carbon-steel and stainless-steel valves
Available on 1/2" to 2" valves

Actuation Options

120 Volt AC and DC Voltages
NEMA 4 and 7 Housings
4-20 maDC Valve Positioners
Actuator Brackets
Extra Limit Switches
Reversing Actuators

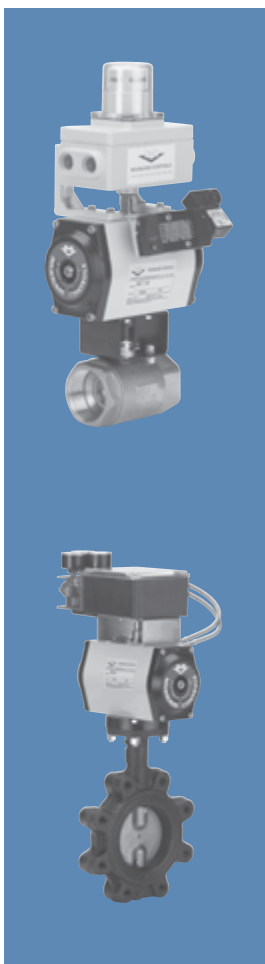
Butterfly Valves

Available on HP Series High Performance Butterfly
Available in wafer and lugged patterns
Available on Class 150 2 1/2" - 24", Class 300 2 1/2" - 16"

Available on rubber-seated valves
Available on wafer and lugged patterns
Available on 2" to 48" valves

Actuation Options

120 Volt AC and DC Voltages
NEMA 4 and 7 Housings
4-20 maDC Valve Positioners
Actuator Brackets
Extra Limit Switches
Reversing Actuators



The information presented on this sheet is correct at the time of publication. Hammond Valve reserves the right to change design, and/or material specifications without notice. For the Installation, Operation and Maintenance Manual (IOM) see the Technical/Service Information section on our website. For the most current information access www.hammondvalve.com
Hammond Valve is a registered trade mark of Milwaukee Valve Company.

CAST STEEL VALVES



1550CB2



1560CB2



1570CB2

CAST STEEL GATE

1550CB2

Class 150 Flanged, API 600, ASME B16.34 Design, API 598 Tested, 2" Thru 30"

1552CB2

Class 150 Butt weld, API 600, ASME B16.34 Design, API 598 Tested, 2" Thru 24"

3050CB2

Class 300 Flanged, API 600, ASME B16.34 Design, API 598 Tested, 2" Thru 24"

3052CB2

Class 300 Butt weld, API 600, ASME B16.34 Design, API 598 Tested, 2" Thru 24"

6050CB2

Class 600 Flanged, API 600, ASME B16.34 Design, API 598 Tested, 2" Thru 12"

6053CB2

Class 600 Butt weld, API 600, ASME B16.34 Design, API 598 Tested, 2" Thru 12"

CAST STEEL GLOBE

1560CB2

Class 150 Flanged, API 600, ASME B16.34 Design, API 598 Tested, 2" Thru 8"

1562CB2

Class 150 Butt weld, API 600, ASME B16.34 Design, API 598 Tested, 2" Thru 8"

3060CB2

Class 300 Flanged, API 600, ASME B16.34 Design, API 598 Tested, 2" Thru 8"

3062CB2

Class 300 Butt weld, API 600, ASME B16.34 Design, API 598 Tested, 2" Thru 8"

6060CB2

Class 600 Flanged, API 600, ASME B16.34 Design, API 598 Tested, 2" Thru 8"

6063CB2

Class 600 Butt weld, API 600, ASME B16.34 Design, API 598 Tested, 2" Thru 8"

CAST STEEL CHECK

1570CB2

Class 150 Flanged, API 600, ASME B16.34 Design, API 598 Tested, 2" Thru 12"

1572CB2

Class 150 Butt weld, API 600, ASME B16.34 Design, API 598 Tested, 2" Thru 12"

3070CB2

Class 300 Flanged, API 600, ASME B16.34 Design, API 598 Tested, 2" Thru 12"

3072CB2

Class 300 Butt weld, API 600, ASME B16.34 Design, API 598 Tested, 2" Thru 12"

6070CB2

Class 600 Flanged, API 600, ASME B16.34 Design, API 598 Tested, 2" Thru 12"

6073CB2

Class 600 Butt weld, API 600, ASME B16.34 Design, API 598 Tested, 2" Thru 12"

The information presented on this sheet is correct at the time of publication. Hammond Valve reserves the right to change design, and/or material specifications without notice. For the Installation, Operation and Maintenance Manual (IOM) see the Technical/Service Information section on our website. For the most current information access www.hammondvalve.com
Hammond Valve is a registered trade mark of Milwaukee Valve Company.

Hammond Valve Products



Products Available From Hammond Valve

- CS/SS High Performance Butterfly Valves
- Iron Lug-Body and Wafer-Body Butterfly Valves
- Actuation and Controls
- Cast Steel Gate, Globe and Check Valves
- Iron Gate, Globe, Check and Clip Gate Valves
- Silent Check Valves
- 2-Piece Commercial Ball Valves
- 3-Piece Commercial Ball Valves
- Bronze Gate, Globe, Angle, Check and Specialty Valves
- Plumbing and Heating Valves
- UltraPure® - (Low Lead Valves)
- UltraPress® - (Press Valves)

HAMMONDVALVE

16550 West Stratton Drive
New Berlin, Wisconsin 53151
262-432-2702 Phone
262-432-2703 Fax
www.hammondvalve.com

