



HUBBELL

Single Pole Connectors

Innovative

High Quality

Dependable

Easy to Use

Durable



Wiring Device-Kellems

Single Pole Connectors



The name Hubbell Wiring Device-Kellems is synonymous with innovation and quality. In keeping with this reputation, Hubbell Wiring Device-Kellems has once again raised the bar by introducing a redesigned line of innovative, high quality, single pole plugs, receptacles and all the accessories for the single pole connector marketplace. The redesigned Hubbell Single Pole Connector line is rated for 600 volts AC and 250 volts DC, up to 400 amps for cable sizes #4 through 4/0. These single pole connectors are the right choice for supplying temporary electrical power distribution for entertainment, theme parks, carnival equipment, concerts, movie making, and numerous other applications requiring temporary power. These single pole connectors have been designed with ease of assembly and disassembly in mind, no special tools are required. A high strength nonconductive retaining screw is all that is needed to securely lock the contacts to the insulated sleeve.



Male Plug

Insulgrip® Style Housing for Superior Gripping

Grip conforms to the users hand making it easy to connect and disconnect, even with gloves on.



Non Conductive Retaining Screw

Locks contacts in place. Allows for easy installation. Prevents contact movement within housing. Special screw thread requires fewer turns than most competitors and reduces the risk of a conductive screw being substituted.



Large Raised Alignment Arrow



Aids in the mating of devices and provides a visual indication that the devices are properly connected.



Rounded Corners

Reduces the possibility of catching or snagging on structures or equipment.

UL Enclosure Types 3R, 4X and 12K Rating

Suitable for use in almost any environment.



Double Cam Design With Stress Relief Hole

Provides high contact pressure and vibration resistant connection, which helps reduce operating temperatures and extends life.

Female Plug

High Conductivity Brass Contact

Provides improved performance by helping to reduce operating temperatures and extends life.

Turn & Lock Symbol

Aids in the mating of devices and provides a clear indication that the devices are properly connected.

Easily Identifiable Cable Cut Off Points For Secure Fit



Allows you to easily customize the housing to the required cable size. Makes cutting to the correct cable size very easy. Accommodates wide range of cables (0.46" – 1.02").



Extra Long Locking Ring

Non-conductive inner sleeve reduces force required to install housing over contacts. Easier to rotate contact in body for installing retaining screw.



Strip Gauge

Molded into every plug and receptacle housing. Simplifies installation and saves time.



Ordering Information

Double Male (Male-Male)

Color	Catalog Numbers
Black	HBLDMBK
White	HBLDMW
Red	HBLDMR
Blue	HBLDMBL
Green	HBLDMGN
Yellow	HBLDMY
Orange	HBLDMO
Brown	HBLDMBN



HBLDMBL

Double Female (Female-Female)

Color	Catalog Numbers
Black	HBLDFBK
White	HBLDFW
Red	HBLDFR
Blue	HBLDFBL
Green	HBLDFGN
Yellow	HBLDFY
Orange	HBLDFO
Brown	HBLDFBN



HBLDFBK

Snap Back Cover

Color	Catalog Numbers
Black	HBLSCBK
White	HBLSCW
Red	HBLSCR
Blue	HBLSCBL
Green	HBLSCGN
Yellow	HBLSCY
Orange	HBLSCO
Brown	HBLSCBN



HBLSCW

Replacement Parts

Color	Male Body	Female Body
Black	HBLMBBK	HBLFBBK
White	HBLMBW	HBLFBW
Red	HBLMBR	HBLFBR
Blue	HBLMBBL	HBLFBBL
Green	HBLMBGN	HBLFBGN
Yellow	HBLMBY	HBLFBY
Orange	HBLMBO	HBLFBO
Brown	HBLMBBN	HBLFBBN



HBLFBBK

Size	Male Pin	Female Sleeve
Contact, 300 Amp	HBL300RCM	HBL300RCF
Contact, 400 Amp	HBL400RCM	HBL400RCF



HBLPK

Accessory Kit	Male or Female
(Retaining Screw, Copper Foil, Terminal Screws & Wire)	HBLPK



Tapping "T" (Female-Female Male)

Color	Catalog Numbers
Black	HBLTBK
White	HBLTW
Red	HBLTR
Blue	HBLTBL
Green	HBLTGN
Yellow	HBLTY
Orange	HBLTO
Brown	HBLTBN



HBLTBN

Paralleling "T" (Female-Male-Male)

Color	Catalog Numbers
Black	HBLPTBK
White	HBLPTW
Red	HBLPTR
Blue	HBLPTBL
Green	HBLPTGN
Yellow	HBLPTY
Orange	HBLPTO
Brown	HBLPTBN



HBLPTY

Tri-Tap (Male-Female-Female-Female)

Color	Catalog Numbers
Black	HBLM3FBK
White	HBLM3FW
Red	HBLM3FR
Blue	HBLM3FBL
Green	HBLM3FGN
Yellow	HBLM3FY
Orange	HBLM3FO
Brown	HBLM3FBN



HBLM3FBK

Tri-Tap "T" (Female-Male-Male-Male)

Color	Catalog Numbers
Black	HBLF3MBK
White	HBLF3MW
Red	HBLF3MR
Blue	HBLF3MBL
Green	HBLF3MGN
Yellow	HBLF3MY
Orange	HBLF3MO
Brown	HBLF3MBN



HBLF3MR

Distribution Block (1-Male, 6-Females)

Color	Catalog Numbers
Black	HBL7DBBK
White	HBL7DBW
Red	HBL7DBR
Blue	HBL7DBBL
Green	HBL7DBGN
Yellow	HBL7DBY
Orange	HBL7DBO
Brown	HBL7DBBN



HBL7DBGN



Ordering Information

Plugs

Amp	Color	Cable Size	Male Plug	Female Plug
300	Black	#4 - 2/0	HBL300MBK	HBL300FBK
300	White	#4 - 2/0	HBL300MW	HBL300FW
300	Red	#4 - 2/0	HBL300MR	HBL300FR
300	Blue	#4 - 2/0	HBL300MBL	HBL300FBL
300	Green	#4 - 2/0	HBL300MGN	HBL300FGN
300	Yellow	#4 - 2/0	HBL300MY	HBL300FY
300	Orange	#4 - 2/0	HBL300MO	HBL300FO
300	Brown	#4 - 2/0	HBL300MBN	HBL300FBN

400	Black	2/0 - 4/0	HBL400MBK	HBL400FBK
400	White	2/0 - 4/0	HBL400MW	HBL400FW
400	Red	2/0 - 4/0	HBL400MR	HBL400FR
400	Blue	2/0 - 4/0	HBL400MBL	HBL400FBL
400	Green	2/0 - 4/0	HBL400MGN	HBL400FGN
400	Yellow	2/0 - 4/0	HBL400MY	HBL400FY
400	Orange	2/0 - 4/0	HBL400MO	HBL400FO
400	Brown	2/0 - 4/0	HBL400MBN	HBL400FBN

Panel Mount Receptacles; Stud Type

Amp	Color	Male Receptacles	Female Receptacles
400	Black	HBLMRSBK	HBLFRSBK
400	White	HBLMRSW	HBLFRSW
400	Red	HBLMRSR	HBLFRSR
400	Blue	HBLMRSBL	HBLFRSBL
400	Green	HBLMRSGN	HBLFRSGN
400	Yellow	HBLMRSY	HBLFRSY
400	Orange	HBLMRSO	HBLFRSO
400	Brown	HBLMRSBN	HBLFRSBN

Panel Mount Receptacles; Double Set Screw

Amp	Color	Cable Size	Male Receptacles	Female Receptacles
400	Black	#4 - 4/0	HBLMRBK	HBLFRBK
400	White	#4 - 4/0	HBLMRW	HBLFRW
400	Red	#4 - 4/0	HBLMRR	HBLFRR
400	Blue	#4 - 4/0	HBLMRBL	HBLFRBL
400	Green	#4 - 4/0	HBLMRGN	HBLFRGN
400	Yellow	#4 - 4/0	HBLMRY	HBLFRY
400	Orange	#4 - 4/0	HBLMRO	HBLFRO
400	Brown	#4 - 4/0	HBLMRBN	HBLFRBN

Protective Caps (Fits 300 & 400 Amp Devices)

Color	Fits Male Devices	Fits Female Devices
Black	HBLMCAPBK	HBLFCAPBK
White	HBLMCAPW	HBLFCAPW
Red	HBLMCAPR	HBLFCAPR
Blue	HBLMCAPBL	HBLFCAPBL
Green	HBLMCAPGN	HBLFCAPGN
Yellow	HBLMCAPY	HBLFCAPY
Orange	HBLMCAPO	HBLFCAPO
Brown	HBLMCAPBN	HBLFCAPBN



HBL400MBK



HBL400FBK



HBLMRSR



HBLFRSBL



HBLMRBK



HBLFRO



HBLFCAPBK



HBLMCAPBK

Single Pole Connectors



Technical Specifications 300 and 400 Ampere

Electrical

Voltage Ratings	600V AC Maximum. 250V DC Maximum.
Amperage Rating	400A Maximum.

Mechanical

Terminal Accommodation	Plug- 300A - #4 to 2/0. Plug- 400A - 2/0 to 4/0. Recpt.- 400A - #4 to 4/0.
Product Identification	Ratings are a permanent part of device.
Base Compound	Thermoplastic Elastomer (TPE).
Contact Material	Brass.
Retaining Screw Material	Nylon.

Certification / Environmental

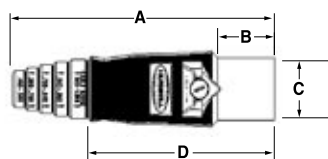
UL and cUL Listed.
UL Enclosure Types 3R, 4X, 12K.
Flammability: HB per UL94 or CSA 22.2. 0.17.
UL 498 for attachment plugs and receptacles.
UL 1691 draft standard for single pin and sleeve devices intended for theatre, stage and studio applications.
National Electric Code (NEC), ANSI/NFPA 70.

Ampacity Chart (Type SC/PPC Wire)

Cable Size	Ampacity*
#4	140
#2	190
2/0	300
4/0	405

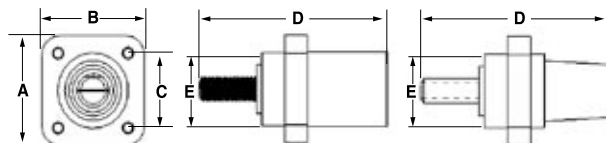
* 90 Deg. C column NEC Table 400.5(B).

Dimensional Information (in/mm)



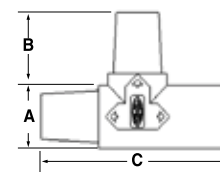
Male Plug

A	B	C	D
6.74" (171.2)	1.47" (37.3)	1.48" (37.6)	4.78" (121.4)



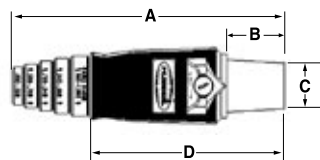
Panel Mount Receptacle; 1/2"-13 UNC Thread Stud

A	B	C	D	E
2.20" (55.9)	2.20" (55.9)	1.50" (38.1)	4.10" (104.3)	1.48" (37.6)



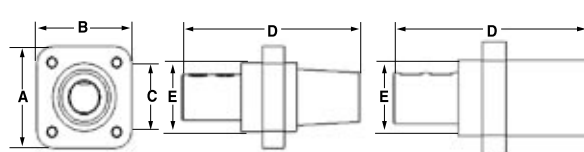
Tapping Tee

A	B	C
1.48" (37.6)	1.7" (43.3)	4.74" (120.5)



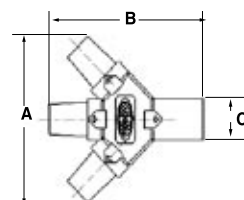
Female Plug

A	B	C	D
6.84" (173.6)	1.44" (36.6)	1.06" (27.0)	4.80" (122.0)



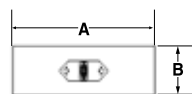
Panel Mount Receptacle; Double Set Screw

A	B	C	D	E
2.20" (55.9)	2.20" (55.9)	1.50" (38.1)	4.10" (104.3)	1.48" (37.6)



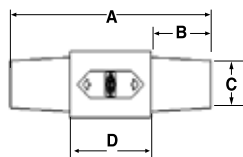
Single Pin TRI-TAP

A	B	C
5.88" (149.3)	5.78" (146.9)	1.48" (37.6)



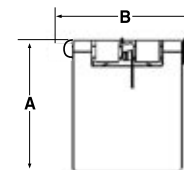
Double Male

A	B
4.65" (118.1)	1.48" (37.6)



Double Female

A	B	C
4.84" (122.9)	1.44" (36.6)	1.06" (27.0)



Snap Back Cover

A	B
2.28" (59.2)	2.33" (59.2)



Hubbell First -

Indicates a product that is the first in the industry to meet a new standard or solve key application needs.



Labor Savings -

Indicates a unique feature that greatly simplifies assembly or reduces installation time.



Tips and Application Solutions -

Describes ways to use Hubbell products to address demanding applications.

HUBBELL
ADVANTAGE

