

Twist-Lock® Devices
 20A, 3 Phase 250V AC, 3 Pole, 4 Wire
 Grounding
 Safety-Shroud® Receptacle

HUBBELL



Features

- Alignment arrows with lock and unlock symbols provide a visual indication that devices are properly connected
- Catalog number and color coded voltage rating are visible even when in use
- Engineered thermoplastic housing is impact and corrosion resistant, making it suitable for heavy-duty industrial environments

Ordering Information

Description	Device Color	UPC	Catalog Number
RPT surface mounting, one gang.	Gray	783585234502	HBL2420SR

Listings

Listed to UL 498
 Fed. Spec. W-C-596
 Certified to CSA C22.2 No.42

Specifications

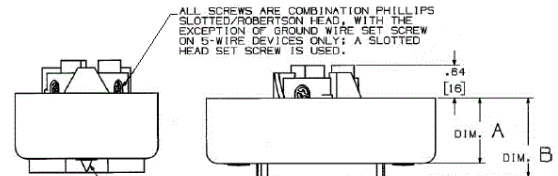
Housing / Flange	Gray RPT
Terminal Retainer	Clear polycarbonate
Body Contact Carrier	Natural (white) nylon
Body Holding Screws	Steel, zinc plated
Contacts	Brass

Performance

Electrical	
Current Interrupting	Certified for current interrupting at full rated current
Dielectric Voltage	Withstands 2,000V minimum
Mechanical	
Terminal Accommodation	#16 AWG - #8 AWG solid or stranded copper wire only.
Terminal Identification	Terminals identified in accordance with UL 498
Environmental	
Flammability	V2 or better per UL94/CSA 22.2 No.0.17
Moisture Resistance	IP20 Suitability
Operating Temperatures	Maximum Continuous 75°C; Minimum -40°C (w/o impact)

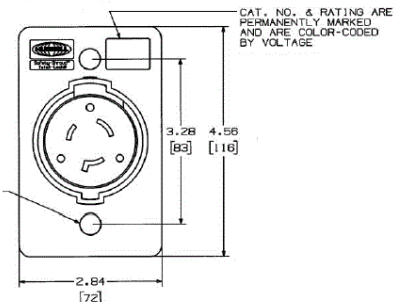


20A 3Ø 250V AC
 NEMA L15-20R
 UL/CSA
 3 HP



ALL SCREWS ARE COMBINATION PHILLIPS SLOTTED/ROBERTSON HEAD, WITH THE EXCEPTION OF GROUND WIRE SET SCREW ON 5-WIRE DEVICES ONLY; A SLOTTED HEAD SET SCREW IS USED.

ARROW INDICATES LOCKED AND UNLOCKED STATUS WHEN MATED WITH HUBBELL SAFETY-SHROUD™ OR WATERTIGHT SAFETY-SHROUD™ TWIST-LOCK Ⓞ MALE PLUG



VALOX SCREW CAPS ARE PROVIDED TO COVER SCREW MOUNTING HOLES.

CAT. NO. & RATINGS ARE PERMANENTLY MARKED AND ARE COLOR-CODED BY VOLTAGE

Accessories

Plug	HBL2421S
------	----------

Resources

Customer Use Drawing
 eCatalog

Dimensions in Inches (mm)

Hubbell Wiring Device-Kellems • Hubbell Incorporated (Delaware) • 40 Waterview Drive • Shelton, CT 06484

Phone (800) 288-6000 • Fax (800) 255-1031 • Specifications subject to change without notice.

