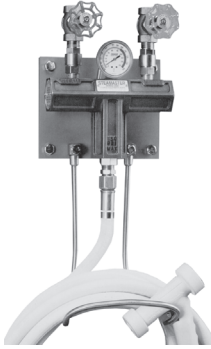


## Water-Steam Washdown Station

Fail-safe mixing station, bronze, wall mounted, safely blends steam and cold water for hot water on demand. Should cold water fail, the steam is instantly shut-off. **150 PSI** maximum, **200°F** maximum.



Part #	Price/E
<b>SWDS</b>	<b>\$2550.00</b>

### Pressure Requirements

Steam Pressure	
Minimum <b>80 PSI</b>	Maximum <b>150 PSI</b>
Water Pressure	
Minimum <b>50 PSI</b>	Maximum <b>80 PSI</b>

All units are furnished with the following:

- Control valves
- Dial thermometer
- In-line check valves
- 3/4" inlet and outlet
- Stainless steel hose rack
- Mounting plate and hardware

Note: Station is not supplied with hose and nozzle.

## Hot and Cold Water Mixing Station

Hot and cold water mixing station, bronze, wall mounted. **150 PSI** maximum, **200°F** maximum.



Style	Part #	Price/E
1	<b>WDS1</b>	<b>\$950.00</b>

All units are furnished with the following:

- Control valves
- Dial thermometer (optional)
- In-line check valves
- 3/4" inlet and outlet
- Stainless steel hose rack
- Mounting bracket and hardware

**NEW**

## Rack for Mixing Station

Designed to hold 50 feet of 3/4" heavy duty industrial grade hose



Part #	Price/E
<b>WDSR</b>	<b>\$163.65</b>

- Heavy duty stainless steel construction
- Stainless steel lag screws
- Heavy duty solid brass mounting crowns
- Supplied with mounting hardware

## Hot Water Washdown Hose

- Working pressure: **250 PSI**
- Temperature to: **200°F**
- 3/4" male, both ends
- White, wrapped Neoprene cover (.075" thick), braided textile reinforcement
- Smooth extruded Chlorobutyl tube
- Furnished with internal stainless steel spring guards at both ends



Size	Part #	Price/E
5/8" x 25'	<b>SWDSHOSE25</b>	<b>\$550.00</b>
5/8" x 50'	<b>SWDSHOSE50</b>	<b>900.00</b>

## Hot Water Washdown Spray Nozzles

For low pressure cleaning and sanitation applications, such as food and dairy processing, tank and drum cleaning, pharmaceutical and chemical manufacturing and meat and poultry packing.

- Efficient design for operator comfort
- Variable spray pattern from solid stream to 50° hollow cone
- Hose connects at base of gun for easy maneuvering
- 1/2" Female NPT inlet
- Rubber coated handle protects hands from water temperatures to 150°F
- **12.5 GPM** flow capacity at **150 PSI**
- *Do not use with steam lines.*



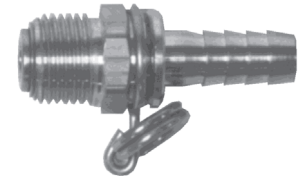
Cover color	Brass		Aluminum	
	Part #	Price/E	Part #	Price/E
Black	<b>BWSG</b>	\$210.00	<b>AWSG</b>	\$240.00
White	<b>BWSG-W</b>	230.00	<b>AWSG-W</b>	255.00

E

## Swivel Connectors for Washdown Spray Guns

### Hose Shank

NPT	Hose I.D.	Part #	Price/E
1/2"	1/2"	<b>BNS44</b>	\$46.00
1/2"	3/4"	<b>BNS64</b>	46.00



- Brass swivel body
- Stainless steel hose shank
- Brass connecting nut
- EPDM gasket connecting nut

### GHT Thread

NPT	Female GHT	Part #	Price/E
1/2"	3/4"	<b>BMAS974</b>	\$46.00



## Thermal-Gard™ Elevated Temperature Spray Nozzle

The Thermal-Gard™ elevated temperature spray nozzle protects the operator from extreme hot water temperatures that exceed the comfort zone of standard hot water nozzles. 3/8" Female NPT inlet. Black cover.

- Assembly includes required special rigid, stainless steel adapter, (3/8" male NPT x 1/2" female NPT).
- Thermal insulating sleeve reduces overall heat during elevated temperature conditions.
- Stainless steel lever handle is coated for additional thermal protection, and operator comfort.
- Lightweight aluminum alloy body reduces overall weight.
- Corrosion resistant body is anodized for additional corrosion protection.
- Recommended for water temperatures above 140°F to a maximum temperature of 200°F.
- **14 GPM** flow capacity
- Working pressure: **150 PSI**



Aluminum	
Part #	Price/E
<b>AWSG-TG</b>	\$285.00

## Temperature Indicating Spray Nozzle



When you uncoil your hose and walk away from the hot and cold water mixer, you can no longer read the dial thermometer on the mixer. With the temperature indicating spray nozzle, you take your thermometer with you. 1/2" female NPT inlet. Black cover.

- Easy to read dial thermometer is located at the rear of the nozzle for accurate and continual monitoring of water temperature.
- The dial thermometer is all stainless steel with a plastic sight window, and the entire gauge assembly is recessed into the rubber cover for complete protection.
- Alerts the operator to shut-down the steam valve upon cold water failure, preventing scalding and steam burn injuries (ensures operator safety).
- Ensures a more accurate discharge water temperature reading.
- Recommended for water temperatures to **200°F**
- Maximum operating pressure: **150 PSI**
- **14 GPM** flow capacity

Bronze

Part #	Price/E
<b>BWSG-TI</b>	<b>\$345.00</b>

E

## Stainless Steel Industrial Grade Spray Nozzle



The stainless steel industrial grade spray nozzle is recommended for use on corrosive applications where bronze and aluminum are not suitable.

- Heavy duty 300 series stainless steel body and barrel
- Variable spray pattern adjusts from a soft spray to a solid stream
- Replaceable rubber cover is specially formulated to resist a wide range of oils and chemicals. Rubber cover also protects surrounding equipment.
- 1/2" male NPT x 3/4" hose barb 300 series stainless steel swivel adapter
- Maximum operating pressure: **150 PSI**
- **8 GPM** flow capacity at **100 PSI**
- 1/2" female NPT inlet

300 series Stainless Steel

Part #	Price/E
<b>300SSSG</b>	<b>\$528.00</b>

## Brass Industrial Grade Front Lever Spray Nozzle



The brass industrial grade spray nozzle provides effortless one hand operation: by actuating the operating lever the valve is opened/closed and the jet power is regulated from spray to concentrated jet.

- Durable nozzle constructed of a high quality brass and steel combination.
- Maximum operating pressure: **350 PSI**
- Suitable for hot water up to **122°F**
- The adjusting screw on the back of the gun allows you to fix the desired form of jet. The fixing clamp for the operating lever allows permanent service.
- **6.6 GPM** flow capacity at **72 PSI**
- 1/2" female NPT inlet

Brass

Part #	Price/E
<b>DWG050</b>	<b>\$155.00</b>

## Pressure Spray Guns

- 3/8" female inlet
- 1/4" female outlet
- **8 GPM**
- Operating pressure: **4500 PSI**
- Temperatures to **300°F**
- Anti-fatigue pressure compensating design

Part #	Price/E
<b>HPSG</b>	<b>\$61.00</b>



**NEW**

- 3/8" female inlet
- 1/4" female outlet
- **6.6 GPM**
- Operating pressure: **3625 PSI**
- Temperatures to **140°F**

Part #	Price/E
<b>HPSGC</b>	<b>\$51.90</b>



**E**

## Spray Lances and Extensions for Pressure Gun



- for soap and water

### Dual Lance

Part #	Description	Length	Price/E
<b>AL344</b>	<i>stainless steel</i> , 1/4" inlet, 2" x 1/4" female outlet	40"	<b>\$125.00</b>



### Molded Grip Extension

Part #	Description	Length	Price/E
<b>AL323XX</b>	<i>zinc</i> , 1/4" male x male threads	24"	<b>\$18.00</b>
<b>AL324XX</b>	<i>zinc</i> , 1/4" male x male threads	36"	<b>18.00</b>
<b>AL325XX</b>	<i>zinc</i> , 1/4" male x male threads	48"	<b>28.50</b>



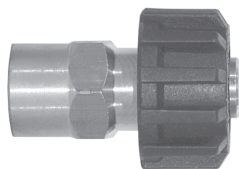
### Vented Grip Lance

- for hot water

Part #	Description	Length	Price/E
<b>AL361</b>	<i>zinc</i> , 1/4" male inlet x 1/4" female outlet	36"	<b>\$35.30</b>

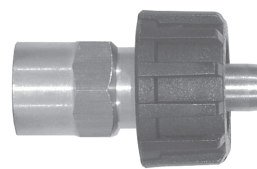
**NEW**

## Quick Couplings and Plugs



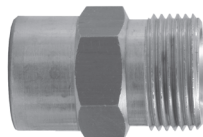
3/8" female inlet, 1/2" female outlet

Part #	Description	Price/E
AL453	Quick coupling	\$16.50



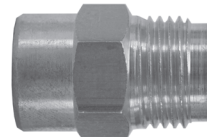
3/8" female inlet, 1/2" female outlet

Part #	Description	Price/E
AL462	Swiveling quick coupling	\$20.50



3/8" female inlet, 1/2" male outlet

Part #	Description	Price/E
AL456	Fixed quick coupling plug	\$5.35

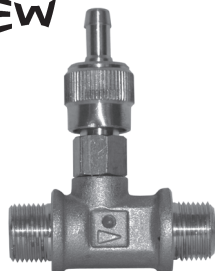


3/8" female inlet, 1/2" male outlet

Part #	Description	Price/E
AL464	Quick coupling plug	\$6.15

**NEW**

## Injector Nozzle

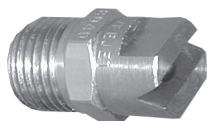


For injection of cleaning solutions into high pressure discharge lines.

- 3-4 GPM
- Operating pressure: 4,000 PSI

Part #	Description	Price/E
AL477	Adjustable, 3/8" red, 2.1 mm orifice	\$27.45

## High Pressure Spray Soap Nozzles



Part #	Description	Price/E
NZ4040S	1/4", 40° spray angle, size #40	\$8.15
NZ8040S	1/4", 80° spray angle, size #40	8.15

## Quick Connect Spray Nozzles



\* To be used with 1/4" couplers on page 207.

Part #	Description	Price/E
MSP415	1/4", yellow, 15°, size #4	\$13.00
MSP425	1/4", green, 25°, size #4	13.00
MSP440	1/4", white, 40°, size #4	14.25

**NEW**

## Turbo Nozzles

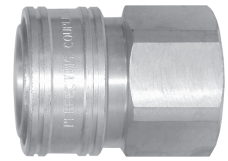


Part #	Description	Price/E
AL-TPR25-30	1/4", yellow, 1.30 mm orifice	\$142.65
AL-TPR25-50	1/4", green, 1.50 mm orifice	142.65
AL-TPR25-70	1/4", red, 1.70 mm orifice	142.65

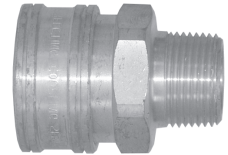
## Quick-Connect Fittings

### Coupler

Part #	Description	Material	Price/E
<b>STFC2</b>	1/4 coupler x 1/4" female NPT	brass	\$7.15
<b>STFC2SS</b>	1/4 coupler x 1/4" female NPT	stainless steel	41.30
<b>STMC2</b>	1/4 coupler x 1/4" male NPT	brass	7.10
<b>STMC2SS</b>	1/4 coupler x 1/4" male NPT	stainless steel	43.00
<b>STFC3</b>	3/8 coupler x 3/8" female NPT	brass	8.45
<b>STFC3SS</b>	3/8 coupler x 3/8" female NPT	stainless steel	51.70
<b>STMC3</b>	3/8 coupler x 3/8" male NPT	brass	9.60
<b>STMC3SS</b>	3/8 coupler x 3/8" male NPT	stainless steel	48.75



Female

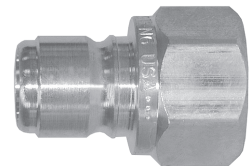


Male

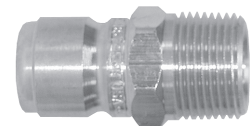
E

### Plug

Part #	Description	Material	Price/E
<b>STFP2</b>	1/4 plug x 1/4" female NPT	steel	\$3.15
<b>STFP2B</b>	1/4 plug x 1/4" female NPT	brass	2.95
<b>STFP2SS</b>	1/4 plug x 1/4" female NPT	stainless steel	11.00
<b>STMP2</b>	1/4 plug x 1/4" male NPT	steel	3.25
<b>STMP2B</b>	1/4 plug x 1/4" male NPT	brass	2.75
<b>STMP2SS</b>	1/4 plug x 1/4" male NPT	stainless steel	10.95
<b>STFP3</b>	3/8 plug x 3/8" female NPT	steel	3.55
<b>STFP3B</b>	3/8 plug x 3/8" female NPT	brass	3.75
<b>STFP3SS</b>	3/8 plug x 3/8" female NPT	stainless steel	14.00
<b>STMP3</b>	3/8 plug x 3/8" male NPT	steel	3.40
<b>STMP3B</b>	3/8 plug x 3/8" male NPT	brass	3.20
<b>STMP3SS</b>	3/8 plug x 3/8" male NPT	stainless steel	12.00



Female



Male

## Unloader

Part #	Description	Price/E
<b>AL606</b>	Pressure regulating unloader valve automatically relieves pressure from pump at shut-off.	\$87.50



## Braided Rubber Hose

Part #	Pressure PSI	Length	Inside Diameter	Male Inlet	Male Swivel Outlet	Price/E
<b>AR503830SSP</b>	3,000	50'	3/8"	3/8"	3/8"	\$240.00



## Garden Hoses

### Coiled Garden Hose



Part #	Size	Color	Price/E	Pkg Qty
<b>CGH38</b>	3/8" x 25'	red	<b>\$61.30</b>	1
<b>CGH50</b>	1/2" x 25'	blue	<b>84.10</b>	1

- Automatically recoils to a fraction of its working length when not in use
- Resists kinking and marring
- Extremely durable in both hot and cold environments
- Constructed of polyurethane
- Working pressure **100 PSI**

### Rubber Vinyl Garden Hose



Part #	Size	Price/E	Pkg Qty
<b>SGH25</b>	5/8" x 25'	<b>\$33.00</b>	5
<b>SGH50</b>	5/8" x 50'	<b>56.10</b>	5
<b>SGH75</b>	5/8" x 75'	<b>76.30</b>	3
<b>SGH100</b>	5/8" x 100'	<b>105.40</b>	3
<b>SGH50-75</b>	3/4" x 50'	<b>81.00</b>	5
<b>SGH75-75</b>	3/4" x 75'	<b>123.00</b>	3

- Extra tough, five-ply construction
- Exclusive, soft textured, abrasion-resistant cover
- Dual reinforced, heavy-duty, flexibility, kink resistance
- Combines durability of rubber, easy handling of vinyl
- SEAL-TITE® leakproof coupling
- Green cover
- Working pressure **150 PSI**
- Temperature Range: **0°F to 140°F**

### Contractors Rubber Water Hose



Part #	Size	Price/E	Pkg Qty
<b>CWH50</b>	3/4" x 50'	<b>\$90.00</b>	5

- EPDM tube
- Spiral synthetic cord reinforcement
- Black EPDM cover
- Heavy duty, crush proof solid brass couplings with wrench grips
- Working pressure **150 PSI**
- Temperature Range: **-20°F to 180°F**

### Layflat Garden Hose



Part #	Size	Price/E	Pkg Qty
<b>LFGH50</b>	5/8" x 50'	<b>\$62.00</b>	1

- USFDA-approved tube materials for food contact use
- Coils flat for compact, easy storage
- For pools, patios, cabins, campers, boats
- Drains automatically
- Non-marring nylon couplings
- Working pressure **300 PSI**

### Premium Rubber Hose



Part #	Size	Price/E	Pkg Qty
<b>PGH50</b>	5/8" x 50'	<b>\$74.60</b>	5
<b>PGH75</b>	5/8" x 75'	<b>105.00</b>	3

- Professional grade reinforcement provides maximum strength
- Heavy-duty flexibility
- Ultimate kink resistance
- SEAL-TITE® leakproof coupling
- Black cover
- Working pressure **150 PSI**
- Temperature Range: **-20°F to 160°F**

### Hot Water Rubber Reinforced Hose



Part #	Size	Price/E	Pkg Qty
<b>HWH50</b>	5/8" x 50'	<b>\$85.20</b>	5
<b>HWH50-75</b>	3/4" x 50'	<b>127.70</b>	1

- Withstands extensive hot water (**200°F**) use.
- Maximum wear, abrasion-resistant cover
- Industrial style reinforcing for flexibility, high burst strength
- Extra heavy-duty, crush-proof, machined brass couplings
- Red cover
- Working pressure **130 PSI**

Optional Pkg./Box Quantity Shown

### Marine, Camper, Patio & Pool Hose

- Lightweight to handle, easy to store
- USFDA-approved tube materials for food contact use
- Non-marring nylon couplings
- White cover
- Working pressure **80 PSI**

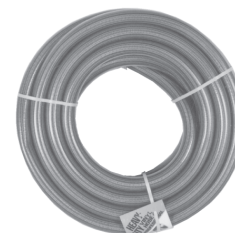
Part #	Size	Price/E	Pkg Qty
<b>MCH50</b>	5/8" x 50'	<b>\$48.00</b>	5



### Country Club® RT Hose

- For golf courses, parks, nurseries
- Premium PVC for high strength, flexibility
- Lightweight, easy handling
- Industrial knit reinforcing for kink resistance
- **450 PSI** burst
- Heavy duty 1" NPSH brass couplings
- Green cover
- Working pressure **150 PSI**

Part #	Size	Price/E	Pkg Qty
<b>CCH50</b>	1" x 50'	<b>\$200.00</b>	2



Optional Pkg./Box Quantity Shown

## Garden Hose Nozzles

### Insulated Water Nozzles

- Heavy duty brass valve and adjusting nut
- Hold open clip locks any spray pattern
- Chrome plated all zinc body
- Industrial strength nylon handle
- Rubber head guard on threaded GHT front version
- Hot water up to **180°F**

Inlet Thread	Part #	Price/E
GHT	<b>SN75</b>	<b>\$20.25</b>
NPT	<b>SN75NPT</b>	<b>20.25</b>



### Pistol-Grip Water Nozzles

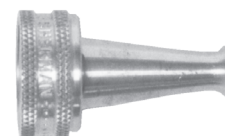
- Heavy duty all zinc metallized body
- Clip locks any spray pattern
- Easy squeeze on/off lever
- All brass valve stem and adjusting nut
- Stainless steel spring with lifetime packing
- Handle GHT threads

Part #	Price/E
<b>CSN75</b>	<b>\$10.25</b>



### Brass Sweeper Nozzles

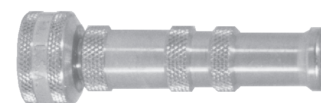
Thread Size	Discharge	Length	Part #	Price/E
3/4" GHT	3/16"	2"	<b>PSN76</b>	<b>\$6.50</b>



### Brass Twist Nozzles

- Brass
- For use up to **150 PSI** (water only)
- **500-AN4** and **500-AN7** are imported

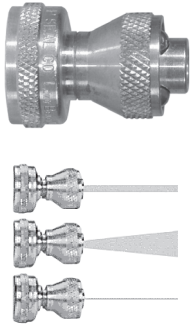
Thread Size	Length	Part #	Price/E
3/4" GHT	4"	<b>BTN75</b>	<b>\$15.00</b>
3/4" GHT	4"	<b>500-AN4</b>	<b>10.50</b>
3/4" GHT	7"	<b>500-AN7</b>	<b>17.00</b>



E



**Adjust-a-Power Nozzle**



Thread Size	Part #	Price/E
3/4" GHT	<b>AAPN75GHT</b>	<b>\$11.90</b>

- Ideal for patio, auto and boat, driveway and garden.
- Produces 50% more power than twist nozzles.
- Does not require a washer.
- Leave nozzle in the open position when not in use.
- Brass construction with stainless steel bearings.
- For use up to **100 PSI** (water only).



**Fire Hose Nozzle with Bumper**



Thread Size	45° Spray GPM @ 100 PSI	Part #	Price/E
3/4" GHT	25.1	<b>FNB75GHT</b>	<b>\$31.25</b>

- Red polycarbonate with brass stem
- Adjusts from Straight Stream to Fog
- For use up to **100 PSI** (water only)

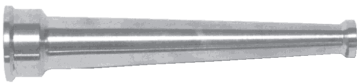
**Constant Flow Nozzle with Bumper**



Thread Size	45° Spray GPM @ 100 PSI	Part #	Price/E
3/4" GHT	8	<b>GNB75GHT</b>	<b>\$26.90</b>

- Black plastic
- Steel stem

**Brass Plain Hose Nozzle**



Thread Size	Discharge	Length	Part #	Price/E
3/4" GHT	1/4	6"	<b>BN6</b>	<b>\$27.95</b>

- Brass with satin finish
- For use up to **100 PSI** (water only)

**Hydrant Adapter**



Female NST	Male GHT	Part #	Price/E
2 1/2"	3/4"	<b>HA2576</b>	<b>\$33.10</b>

- Cast brass

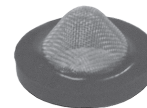
**Washers and Gaskets**



Red Vinyl



White Rubber



**Garden Hose Screen Gasket**

Material	Part #	Price/E	Pkg Qty
red vinyl	<b>TVW7</b>	<b>\$.04</b>	100
white rubber	<b>TRW7</b>	<b>.17</b>	100

**GHT Washers**

Material	Mesh Size	Part #	Price/E
FDA approved black vinyl	6050 mesh, 304 SS	<b>TVS7-30</b>	<b>\$.80</b>

Optional Pkg./Box Quantity Shown

Compression bibb faucets sold on page 371.

## Industrial Service Sprayer

- Actual capacity 1½ gallons; operating capacity 1 gallon
- Rigid thermoplastic polymer tank
- Chemical resistant Isoplast discharge and pressure relief valves
- Extra-wide 3¼" mouth opening
- Fast pressurizing, 10" non-corroding polymer pump
- Chemical resistant leakproof viton seals
- Reinforced 42" polyethylene-lined hose
- Flexible 16" polymer wand for easy spraying

Part #	Price/E
100HDPI	\$105.50



## Garden Hose Accessories



**Radiator Bib**

Part #	Price/E
8013	\$25.00

- 1/4" female pipe thread connection
- Vinyl spout



**Flexible Water Nozzle**

Part #	Price/E
8005	\$17.25

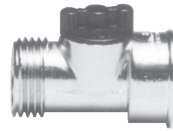
- Bends for water flow. Shuts off when released.
- 3/4" GHT



**Garden Hose Gooseneck**

Part #	Price/E
GHGN	\$9.25

- Powder-coated zinc gooseneck connector angles hose away from hose bib
- 125 PSI



**Straight GHT Valve**

Part #	Price/E
GHV	\$7.40

- Powder-coated zinc shut-off valve
- Hot water up to 160°F
- 150 PSI



**Straight GHT Valve with Handle**

Part #	Price/E
GHVEZK	\$9.25

- Powder-coated zinc shut-off valve with easy on/off handle
- Hot water up to 160°F
- 150 PSI



**GHT Twin Valve**

Part #	Price/E
GHYV	\$10.50

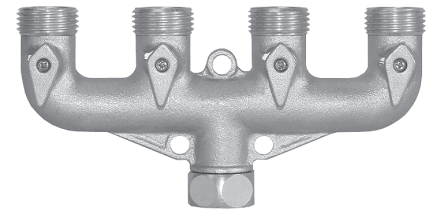
- Powder-coated zinc with twin shut-off valves
- Hot water up to 160°F
- 150 PSI



**GHT "Y"**

Part #	Price/E
GHY	\$6.50

- Plated zinc with twin outlet
- Hot water up to 160°F
- Includes one end cap
- 150 PSI



**GHT 4-Valve Manifold**

Part #	Price/E
500-GH4V	\$58.00

- Stainless balls
- Teflon® seats
- Swivel inlet

Optional Pkg./Box Quantity Shown

## GHT Brass Clincher Repair Fittings



Female with Swivel Nut

Size	Part #	Price/E	Pkg Qty
1/2"	<b>C12F</b>	\$4.15	10
5/8"	<b>C58F</b>	4.15	10
3/4"	<b>C34F</b>	4.15	10



Male

Size	Part #	Price/E	Pkg Qty
1/2"	<b>C12M</b>	\$3.80	10
5/8"	<b>C58M</b>	3.80	10
3/4"	<b>C34M</b>	3.80	10



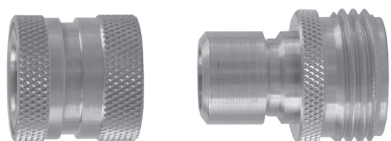
Mender

Size	Part #	Price/E	Pkg Qty
1/2"	<b>C12HM</b>	\$4.40	10
5/8"	<b>C58HM</b>	4.40	10
3/4"	<b>C34HM</b>	4.40	10

Optional Pkg./Box Quantity Shown

## Brass Garden Hose Quick Couplers

Precision machined from solid brass with easy push-pull ring for long lasting and quick hose attachments. Maximum operating pressure: **200 PSI**.



Description	Part #	Price/E	Pkg Qty
Complete	<b>DGH7</b>	\$10.25	25
Plug	<b>DGH7P</b>	3.25	25
Coupler	<b>DGH7C</b>	7.00	25
Seal	<b>DGHW7</b>	0.90	25
Valved Coupler - water shutoff	<b>DGH7CV</b>	11.40	25
Complete Assembly - valved	<b>DGH7V</b>	14.65	25

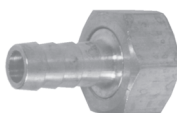
Optional Pkg./Box Quantity Shown

## Brass Short Shank Fittings - NPSM Thread



Machined (Complete)

Hose ID	Thread	Part #	Price/E
1/2"	3/4"	<b>BS406</b>	\$10.60
---	---	---	---
3/4"	3/4"	<b>BS606</b>	11.55
1"	1"	<b>BS808</b>	17.05



Machined Female with Swivel Nut

Hose ID	Thread	Part #	Price/E
1/2"	3/4"	<b>BS446</b>	\$5.00
5/8"	3/4"	<b>BS546</b>	5.25
3/4"	3/4"	<b>BS646</b>	5.80
1"	1"	<b>BS848</b>	10.20

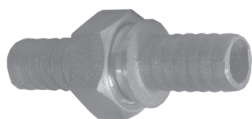


Machined Male

Hose ID	Thread	Part #	Price/E
1/2"	3/4"	<b>BS416</b>	\$5.60
---	---	---	---
3/4"	3/4"	<b>BS616</b>	5.75
1"	1"	<b>BS818</b>	6.85

KRW Washers standard, located on page 190.

## Brass Short Shank Fittings - GHT Thread



Complete Coupling  
Cast (sets only)

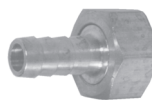
Size	Part #	Price/E
1/2"	<b>CBC74</b>	\$5.90
5/8"	<b>CBC75</b>	5.90
3/4"	<b>CBC76</b>	5.90
1" *	<b>CBC88</b>	9.80

\* 1" cast has NPSM threads



Complete Coupling  
Machined

Size	Part #	Price/E
3/8"	<b>BC73</b>	\$8.15
1/2"	<b>BC74</b>	8.05
5/8"	<b>BC75</b>	8.05
3/4"	<b>BC76</b>	8.05



Female with Swivel Nut  
Machined

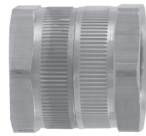
Size	Part #	Price/E	Pkg Qty
3/8"	<b>BCF73</b>	\$4.50	50
1/2"	<b>BCF74</b>	4.40	25
5/8"	<b>BCF75</b>	4.40	25
3/4"	<b>BCF76</b>	4.40	25



Machined  
Male

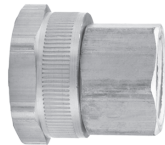
Size	Part #	Price/E	Pkg Qty
3/8"	<b>BCM73</b>	\$3.65	50
1/2"	<b>BCM74</b>	3.65	50
5/8"	<b>BCM75</b>	3.65	25
3/4"	<b>BCM76</b>	3.65	25

## Brass GHT Adapters



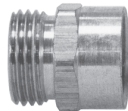
**Female Swivel**

Female x Female	Part #	Price/E	Pkg Qty
GHT x GHT	<b>BA977</b>	<b>\$5.80</b>	100



**Female Swivels**

Female x Female	Part #	Price/E	Pkg Qty
GHT x 1/2" NPTF	<b>BAS974</b>	<b>\$5.30</b>	25
GHT x 3/4" NPTF	<b>BAS976</b>	<b>5.80</b>	100



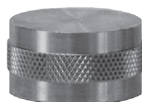
**Male GHT x Female NPTF**

Male x Female	Part #	Price/E	Pkg Qty
GHT x 1/4" NPTF	<b>507-1204</b>	<b>\$2.55</b>	25
GHT x 3/8" NPTF	<b>507-1206</b>	<b>2.75</b>	25
GHT x 1/2" NPTF	<b>BA794</b>	<b>2.95</b>	50
GHT x 3/4" NPTF	<b>BA796</b>	<b>3.65</b>	100
GHT x 1" NPTF	<b>FM1076</b>	<b>20.00</b>	100



**Rigid Female GHT x Female NPTF**

Female x Female	Part #	Price/E	Pkg Qty
GHT x 1/8" NPTF	<b>BA971</b>	<b>\$3.95</b>	25
GHT x 1/4" NPTF	<b>BA972</b>	<b>4.15</b>	25
GHT x 3/8" NPTF	<b>BA973</b>	<b>4.60</b>	25
GHT x 1/2" NPTF	<b>BA974</b>	<b>3.50</b>	25
GHT x 3/4" NPTF	<b>BA976</b>	<b>3.60</b>	25



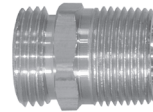
**Garden Hose Cap**

Female	Part #	Price/E	Pkg Qty
GHT	<b>GHC7</b>	<b>\$2.95</b>	50



**Threaded Male**

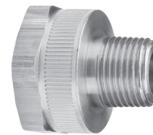
Male x Male	Part #	Price/E	Pkg Qty
GHT x GHT	<b>BA777</b>	<b>\$3.30</b>	100
1" NPSH x GHT	<b>509-1612</b>	<b>4.70</b>	100



**Male GHT x NPTF Adapter**

Male x Male	Part #	Price/E	Pkg Qty
GHT x 3/8" NPTF	<b>BA73</b>	<b>\$3.45</b>	25
GHT x 1/2" NPTF	<b>BA74</b>	<b>3.50</b>	25
GHT x 3/4" NPTF	<b>BA776 *</b>	<b>3.20</b>	25

\* BA776 also has 1/2" female NPT on I.D. of 3/4" male NPT side



**Female GHT x Male NPTF**

Female x Male	Part #	Price/E	Pkg Qty
GHT x 3/8" NPTF	<b>BMA973</b>	<b>\$3.75</b>	25
GHT x 1/2" NPTF	<b>BMA974</b>	<b>3.60</b>	25
GHT x 3/4" NPTF	<b>BMA976</b>	<b>3.90</b>	25
GHT x 1" NPTF	<b>FM7610T</b>	<b>18.50</b>	100



**Female GHT Swivels x Male NPTF**

Female x Male	Part #	Price/E	Pkg Qty
GHT x 1/4" NPTF	<b>504-1204</b>	<b>\$5.70</b>	25
GHT x 3/8" NPTF	<b>504-1206</b>	<b>5.45</b>	25
GHT x 1/2" NPTF	<b>504-1208</b>	<b>5.85</b>	25
GHT x 3/4" NPTF	<b>504-1212</b>	<b>6.20</b>	25

Optional Pkg./Box Quantity Shown

# Brass Adapters

Optional Pkg./Box Quantity Shown

## Brass Hex Nipples



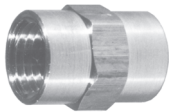
NPTF Thread	Part #	Price/E	Pkg Qty
1/8" x 1/8"	<b>BCN12</b>	\$1.15	100
1/4" x 1/4"	<b>BCN25</b>	1.35	100
3/8" x 3/8"	<b>BCN37</b>	1.75	50
1/2" x 1/2"	<b>BCN50</b>	2.55	25
3/4" x 3/4"	<b>BCN75</b>	4.00	100
1" x 1"	<b>BCN100</b>	8.70	50

## Reducer Hex Nipples



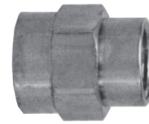
NPTF Thread	Part #	Price/E	Pkg Qty
1/4" x 1/8"	<b>HN2M1M</b>	\$1.50	100
3/8" x 1/4"	<b>HN3M2M</b>	2.05	50
1/2" x 1/4"	<b>HN4M2M</b>	2.80	50
1/2" x 3/8"	<b>HN4M3M</b>	2.95	50
3/4" x 1/2"	<b>HN6M4M</b>	5.45	25

## Female Hex Couplings



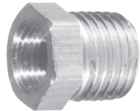
NPTF Thread	Part #	Price/E
1/8" x 1/8"	<b>BA1F1F</b>	\$1.65
1/4" x 1/4"	<b>BA2F2F</b>	2.35
3/8" x 3/8"	<b>BA3F3F</b>	3.10
1/2" x 1/2"	<b>BA4F4F</b>	4.60
3/4" x 3/4"	<b>BA6F6F</b>	8.50

## Reducer Couplings



NPTF Thread	Part #	Price/E
1/4" x 1/8"	<b>RC2F1F</b>	\$2.35
3/8" x 1/4"	<b>RC3F2F</b>	2.70
1/2" x 1/4"	<b>RC4F2F</b>	3.25
1/2" x 3/8"	<b>RC4F3F</b>	4.30
3/4" x 1/2"	<b>RC6F4F</b>	6.15

## Reducer Hex Bushings



Female NPTF	Male NPTF	Part #	Price/E	Pkg Qty
1/8"	1/4"	<b>HB1F2M</b>	\$1.05	100
1/8"	3/8"	<b>HB1F3M</b>	1.40	100
1/8"	1/2"	<b>HB1F4M</b>	2.35	25
1/8"	3/4"	<b>HB1F6M</b>	4.00	25
1/4"	3/8"	<b>HB2F3M</b>	1.30	100
1/4"	1/2"	<b>HB2F4M</b>	2.10	100
1/4"	3/4"	<b>HB2F6M</b>	3.50	25
1/4"	1"	<b>HB2F8M</b>	6.00	25
3/8"	1/2"	<b>HB3F4M</b>	1.80	50
3/8"	3/4"	<b>HB3F6M</b>	3.05	25
3/8"	1"	<b>HB3F8M</b>	6.40	25
1/2"	3/4"	<b>HB4F6M</b>	3.25	25
1/2"	1"	<b>HB4F8M</b>	5.45	25
3/4"	1"	<b>HB6F8M</b>	5.85	25

## Hex Head Plugs



NPT Thread	Part #	Price/E
1/8"	<b>HHP1M</b>	\$0.60
1/4"	<b>HHP2M</b>	0.85
3/8"	<b>HHP3M</b>	1.55
1/2"	<b>HHP4M</b>	2.15
3/4"	<b>HHP6M</b>	4.00
1"	<b>HHP8M</b>	8.40

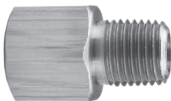
Note: hex head plug is hollow

## Threaded Unions



NPT Thread	Part #	Price/E
1/4"	<b>TUN2F</b>	\$11.50
3/8"	<b>TUN3F</b>	19.00
1/2"	<b>TUN4F</b>	21.50

## Reducer Adapters



Female NPTF	Male NPTF	Part #	Price/E	Pkg Qty
1/8"	1/8"	<b>RA1F1M</b>	\$1.15	100
1/4"	1/8"	<b>RA2F1M</b>	1.75	100
1/4"	1/4"	<b>RA2F2M</b>	2.00	50
3/8"	1/4"	<b>RA3F2M</b>	2.70	50
3/8"	3/8"	<b>RA3F3M</b>	3.10	50
1/2"	1/4"	<b>RA4F2M</b>	4.10	25
1/2"	3/8"	<b>RA4F3M</b>	3.65	25
1/2"	1/2"	<b>RA4F4M</b>	3.90	25
3/4"	1/2"	<b>RA6F4M</b>	5.85	10

## Male Unions



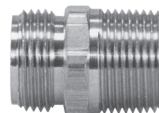
NPSM	NPSM	Part #	Price/E
1/8"	1/8"	<b>176-0202</b>	\$1.95
1/4"	1/4"	<b>176-0404</b>	2.15
3/8"	3/8"	<b>176-0606</b>	3.10
1/2"	1/2"	<b>176-0808</b>	3.35
3/4"	3/4"	<b>176-1212</b>	5.05

## Female NPSH x Female NPSH Swivel



Female NPSH	Female NPSH	Part #	Price/E
1"	1"	<b>BA1616</b>	\$8.00

## Ball Seat to Male Pipe



NPSM	NPTF	Part #	Price/E	Pkg Qty
1/8"	1/8"	<b>BSM11</b>	\$1.65	25
1/4"	1/8"	<b>BSM21</b>	1.20	25
1/4"	1/4"	<b>BSM22</b>	1.30	25
3/8"	1/4"	<b>BSM32</b>	2.00	25
3/8"	3/8"	<b>BSM33</b>	2.50	25
3/8"	1/2"	<b>BSM34</b>	3.35	25
1/2"	3/8"	<b>BSM43</b>	2.80	25
1/2"	1/2"	<b>BSM44</b>	3.70	25
3/4"	3/4"	<b>BSM66</b>	4.45	25

# Brass Adapters

Optional Pkg./Box Quantity Shown

## Brass Hex Nipples



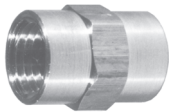
NPTF Thread	Part #	Price/E	Pkg Qty
1/8" x 1/8"	<b>BCN12</b>	\$1.15	100
1/4" x 1/4"	<b>BCN25</b>	1.35	100
3/8" x 3/8"	<b>BCN37</b>	1.75	50
1/2" x 1/2"	<b>BCN50</b>	2.55	25
3/4" x 3/4"	<b>BCN75</b>	4.00	100
1" x 1"	<b>BCN100</b>	8.70	50

## Reducer Hex Nipples



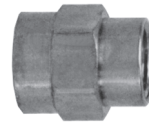
NPTF Thread	Part #	Price/E	Pkg Qty
1/4" x 1/8"	<b>HN2M1M</b>	\$1.50	100
3/8" x 1/4"	<b>HN3M2M</b>	2.05	50
1/2" x 1/4"	<b>HN4M2M</b>	2.80	50
1/2" x 3/8"	<b>HN4M3M</b>	2.95	50
3/4" x 1/2"	<b>HN6M4M</b>	5.45	25

## Female Hex Couplings



NPTF Thread	Part #	Price/E
1/8" x 1/8"	<b>BA1F1F</b>	\$1.65
1/4" x 1/4"	<b>BA2F2F</b>	2.35
3/8" x 3/8"	<b>BA3F3F</b>	3.10
1/2" x 1/2"	<b>BA4F4F</b>	4.60
3/4" x 3/4"	<b>BA6F6F</b>	8.50

## Reducer Couplings



NPTF Thread	Part #	Price/E
1/4" x 1/8"	<b>RC2F1F</b>	\$2.35
3/8" x 1/4"	<b>RC3F2F</b>	2.70
1/2" x 1/4"	<b>RC4F2F</b>	3.25
1/2" x 3/8"	<b>RC4F3F</b>	4.30
3/4" x 1/2"	<b>RC6F4F</b>	6.15

## Reducer Hex Bushings



Female NPTF	Male NPTF	Part #	Price/E	Pkg Qty
1/8"	1/4"	<b>HB1F2M</b>	\$1.05	100
1/8"	3/8"	<b>HB1F3M</b>	1.40	100
1/8"	1/2"	<b>HB1F4M</b>	2.35	25
1/8"	3/4"	<b>HB1F6M</b>	4.00	25
1/4"	3/8"	<b>HB2F3M</b>	1.30	100
1/4"	1/2"	<b>HB2F4M</b>	2.10	100
1/4"	3/4"	<b>HB2F6M</b>	3.50	25
1/4"	1"	<b>HB2F8M</b>	6.00	25
3/8"	1/2"	<b>HB3F4M</b>	1.80	50
3/8"	3/4"	<b>HB3F6M</b>	3.05	25
3/8"	1"	<b>HB3F8M</b>	6.40	25
1/2"	3/4"	<b>HB4F6M</b>	3.25	25
1/2"	1"	<b>HB4F8M</b>	5.45	25
3/4"	1"	<b>HB6F8M</b>	5.85	25

## Hex Head Plugs



NPT Thread	Part #	Price/E
1/8"	<b>HHP1M</b>	\$0.60
1/4"	<b>HHP2M</b>	0.85
3/8"	<b>HHP3M</b>	1.55
1/2"	<b>HHP4M</b>	2.15
3/4"	<b>HHP6M</b>	4.00
1"	<b>HHP8M</b>	8.40

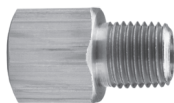
Note: hex head plug is hollow

## Threaded Unions



NPT Thread	Part #	Price/E
1/4"	<b>TUN2F</b>	\$11.50
3/8"	<b>TUN3F</b>	19.00
1/2"	<b>TUN4F</b>	21.50

## Reducer Adapters



Female NPTF	Male NPTF	Part #	Price/E	Pkg Qty
1/8"	1/8"	<b>RA1F1M</b>	\$1.15	100
1/4"	1/8"	<b>RA2F1M</b>	1.75	100
1/4"	1/4"	<b>RA2F2M</b>	2.00	50
3/8"	1/4"	<b>RA3F2M</b>	2.70	50
3/8"	3/8"	<b>RA3F3M</b>	3.10	50
1/2"	1/4"	<b>RA4F2M</b>	4.10	25
1/2"	3/8"	<b>RA4F3M</b>	3.65	25
1/2"	1/2"	<b>RA4F4M</b>	3.90	25
3/4"	1/2"	<b>RA6F4M</b>	5.85	10

## Male Unions



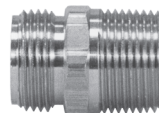
NPSM	NPSM	Part #	Price/E
1/8"	1/8"	<b>176-0202</b>	\$1.95
1/4"	1/4"	<b>176-0404</b>	2.15
3/8"	3/8"	<b>176-0606</b>	3.10
1/2"	1/2"	<b>176-0808</b>	3.35
3/4"	3/4"	<b>176-1212</b>	5.05

## Female NPSH x Female NPSH Swivel



Female NPSH	Female NPSH	Part #	Price/E
1"	1"	<b>BA1616</b>	\$8.00

## Ball Seat to Male Pipe



NPSM	NPTF	Part #	Price/E	Pkg Qty
1/8"	1/8"	<b>BSM11</b>	\$1.65	25
1/4"	1/8"	<b>BSM21</b>	1.20	25
1/4"	1/4"	<b>BSM22</b>	1.30	25
3/8"	1/4"	<b>BSM32</b>	2.00	25
3/8"	3/8"	<b>BSM33</b>	2.50	25
3/8"	1/2"	<b>BSM34</b>	3.35	25
1/2"	3/8"	<b>BSM43</b>	2.80	25
1/2"	1/2"	<b>BSM44</b>	3.70	25
3/4"	3/4"	<b>BSM66</b>	4.45	25

# Pipe Nipples

## Long Pipe Nipples

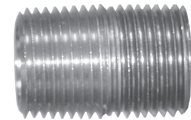
NPT Thread	Length	Part #	Price/E	Pkg Qty	NPT Thread	Length	Part #	Price/E	Pkg Qty
1/8"	1-1/2"	<b>166-0215</b>	<b>\$1.30</b>	25	1/2"	1-1/2"	<b>166-0815</b>	<b>\$3.50</b>	10
1/8"	2"	<b>166-0220</b>	<b>1.65</b>	25	1/2"	2"	<b>166-0820</b>	<b>4.10</b>	10
1/8"	2-1/2"	<b>166-0225</b>	<b>2.20</b>	25	1/2"	2-1/2"	<b>166-0825</b>	<b>5.05</b>	10
1/8"	3"	<b>166-0230</b>	<b>2.75</b>	25	1/2"	3"	<b>166-0830</b>	<b>5.90</b>	10
1/8"	3-1/2"	<b>166-0235</b>	<b>3.10</b>	10	1/2"	3-1/2"	<b>166-0835</b>	<b>7.30</b>	10
1/8"	4"	<b>166-0240</b>	<b>3.50</b>	10	1/2"	4"	<b>166-0840</b>	<b>7.75</b>	5
1/4"	1-1/2"	<b>166-0415</b>	<b>1.55</b>	25	3/4"	2"	<b>166-1220</b>	<b>5.85</b>	25
1/4"	2"	<b>166-0420</b>	<b>2.15</b>	25	3/4"	2-1/2"	<b>166-1225</b>	<b>6.85</b>	25
1/4"	2-1/2"	<b>166-0425</b>	<b>3.10</b>	25	3/4"	3"	<b>166-1230</b>	<b>8.10</b>	25
1/4"	3"	<b>166-0430</b>	<b>4.10</b>	25	3/4"	3-1/2"	<b>166-1235</b>	<b>8.90</b>	25
1/4"	3-1/2"	<b>166-0435</b>	<b>4.45</b>	10					
1/4"	4"	<b>166-0440</b>	<b>4.70</b>	10					
1/4"	5"	<b>166-0450</b>	<b>5.70</b>	5					
3/8"	1-1/2"	<b>166-0615</b>	<b>2.60</b>	25					
3/8"	2"	<b>166-0620</b>	<b>3.10</b>	25					
3/8"	2-1/2"	<b>166-0625</b>	<b>3.60</b>	10					
3/8"	3"	<b>166-0630</b>	<b>4.90</b>	10					
3/8"	3-1/2"	<b>166-0635</b>	<b>5.10</b>	10					
3/8"	4"	<b>166-0640</b>	<b>6.35</b>	5					



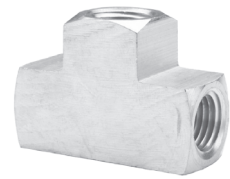
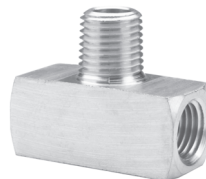
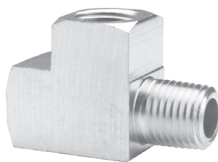
**E**

## Close Pipe Nipples

NPT Thread	Part #	Price/E	Pkg Qty
1/8"	<b>165-0202</b>	<b>\$0.75</b>	50
1/4"	<b>165-0404</b>	<b>1.00</b>	50
3/8"	<b>165-0606</b>	<b>1.50</b>	25
1/2"	<b>165-0808</b>	<b>2.35</b>	25
3/4"	<b>165-1212</b>	<b>3.95</b>	10



## Tees



### Street Tees

Female NPTF	Male NPTF	Part #	Price/E	Pkg Qty
1/8"	1/8"	<b>326-0202</b>	<b>\$3.20</b>	25
1/4"	1/4"	<b>326-0404</b>	<b>3.75</b>	30
3/8"	3/8"	<b>326-0606</b>	<b>5.65</b>	30
1/2"	1/2"	<b>326-0808</b>	<b>9.90</b>	15
3/4"	3/4"	<b>326-1212</b>	<b>19.85</b>	10

### Male Branch Tees

NPTF Thread	Part #	Price/E	Pkg Qty
1/8"	<b>324-0202</b>	<b>\$2.85</b>	100
1/4"	<b>324-0404</b>	<b>4.50</b>	25
3/8"	<b>324-0606</b>	<b>6.95</b>	25
1/2"	<b>324-0808</b>	<b>11.80</b>	25
3/4"	<b>324-1212</b>	<b>21.35</b>	10

### Female Tees

NPTF Thread	Part #	Price/E	Pkg Qty
1/8"	<b>322-0202</b>	<b>\$2.50</b>	100
1/4"	<b>322-0404</b>	<b>3.30</b>	30
3/8"	<b>322-0606</b>	<b>5.05</b>	25
1/2"	<b>322-0808</b>	<b>8.50</b>	15
3/4"	<b>322-1212</b>	<b>14.35</b>	10

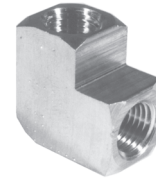
Optional Pkg./Box Quantity Shown

## Elbows



90° Male Pipe Elbows

Male NPTF	Part #	Price/E	Pkg Qty
1/8"	<b>169-0202</b>	<b>\$2.35</b>	25
1/4"	<b>169-0404</b>	<b>2.70</b>	25
3/8"	<b>169-0606</b>	<b>4.25</b>	25
1/2"	<b>169-0808</b>	<b>5.55</b>	25



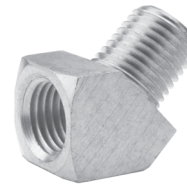
90° Female Pipe Elbows

Female NPTF	Part #	Price/E	Pkg Qty
1/8"	<b>EL1F1F</b>	<b>\$2.35</b>	25
1/4"	<b>EL2F2F</b>	<b>2.90</b>	50
3/8"	<b>EL3F3F</b>	<b>3.65</b>	30
1/2"	<b>EL4F4F</b>	<b>7.00</b>	25
3/4"	<b>EL6F6F</b>	<b>13.15</b>	25



90° Street Elbows

Female NPTF	Male NPTF	Part #	Price/E	Pkg Qty
1/8"	1/8"	<b>SE1F1M</b>	<b>\$2.00</b>	100
1/4"	1/4"	<b>SE2F2M</b>	<b>2.65</b>	50
3/8"	3/8"	<b>SE3F3M</b>	<b>3.55</b>	30
1/2"	1/2"	<b>SE4F4M</b>	<b>6.00</b>	25
3/4"	3/4"	<b>SE6F6M</b>	<b>11.00</b>	10



45° Street Elbows

Female NPTF	Male NPTF	Part #	Price/E	Pkg Qty
1/8"	1/8"	<b>306-0202</b>	<b>\$2.35</b>	25
1/4"	1/4"	<b>306-0404</b>	<b>2.95</b>	50
3/8"	3/8"	<b>306-0606</b>	<b>5.00</b>	25
1/2"	1/2"	<b>306-0808</b>	<b>7.05</b>	30
3/4"	3/4"	<b>306-1212</b>	<b>18.20</b>	10

## Pipe Crosses



Female NPTF Size	Part #	Price/E	Pkg Qty
1/8" - 27	<b>228-0202</b>	<b>\$3.80</b>	20
1/4" - 18	<b>228-0404</b>	<b>4.30</b>	25
3/8" - 18	<b>228-0606</b>	<b>7.20</b>	25
1/2" - 14	<b>228-0808</b>	<b>14.75</b>	20

Optional Pkg./Box Quantity Shown



## Push-On Fittings

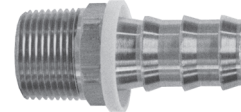
Dixon push-on fittings are intended for use with Lok-On (push-on style) hose **only**. No hose clamps or ferrules are needed. Lok-On fittings will properly grip Lok-On hose only when pushed all the way in, with the cut end of the hose completely concealed by the plastic cap.

### NPTF Hose Barb Fittings



**NPTF-Male Swivel Hose Barbs**  
National Pipe Tapered - Dryseal

Hose I.D.	NPTF Thread	Part #	Price/E	Pkg Qty
1/4"	1/4"	<b>271-0404</b>	<b>\$4.00</b>	50
3/8"	1/4"	<b>271-0604</b>	<b>4.10</b>	50
3/8"	3/8"	<b>271-0606</b>	<b>4.60</b>	25
1/2"	3/8"	<b>271-0806</b>	<b>5.00</b>	25
1/2"	1/2"	<b>271-0808</b>	<b>6.05</b>	25
3/4"	3/4"	<b>271-1212</b>	<b>8.95</b>	25



**NPTF-Male Hose Barbs**  
National Pipe Tapered - Dryseal

Hose I.D.	NPTF Thread	Part #	Price/E	Pkg Qty
1/4"	1/8"	<b>BPN21</b>	<b>\$1.25</b>	100
1/4"	1/4"	<b>BPN22</b>	<b>1.50</b>	100
1/4"	3/8"	<b>BPN23</b>	<b>2.15</b>	50
5/16"	1/8"	<b>BPN251</b>	<b>1.65</b>	100
5/16"	1/4"	<b>BPN252</b>	<b>1.95</b>	50
3/8"	1/8"	<b>BPN31</b>	<b>2.40</b>	100
3/8"	1/4"	<b>BPN32</b>	<b>1.50</b>	50
3/8"	3/8"	<b>BPN33</b>	<b>1.75</b>	50
3/8"	1/2"	<b>BPN34</b>	<b>3.00</b>	25
3/8"	3/4"	<b>BPN36</b>	<b>6.15</b>	25
1/2"	1/4"	<b>BPN42</b>	<b>2.40</b>	25
1/2"	3/8"	<b>BPN43</b>	<b>2.50</b>	25
1/2"	1/2"	<b>BPN44</b>	<b>2.75</b>	50
1/2"	3/4"	<b>BPN46</b>	<b>5.05</b>	50
5/8"	3/8"	<b>BPN53</b>	<b>4.60</b>	25
5/8"	1/2"	<b>BPN54</b>	<b>4.45</b>	25
5/8"	3/4"	<b>BPN56</b>	<b>5.75</b>	25
3/4"	1/2"	<b>BPN64</b>	<b>4.65</b>	25
3/4"	3/4"	<b>BPN66</b>	<b>4.45</b>	25
1"	3/4"	<b>BPN86</b>	<b>11.40</b>	10
1"	1"	<b>BPN88</b>	<b>13.35</b>	10

Note: Add "BC" suffix to part number for brass cap option.



**NPTF-Female Hose Barbs**  
National Pipe Tapered - Dryseal

Hose I.D.	NPTF Thread	Part #	Price/E	Pkg Qty
1/4"	1/8"	<b>BPF21</b>	<b>\$2.45</b>	100
1/4"	1/4"	<b>BPF22</b>	<b>1.90</b>	100
1/4"	3/8"	<b>BPF23</b>	<b>4.25</b>	50
3/8"	1/8"	<b>BPF31</b>	<b>2.20</b>	50
3/8"	1/4"	<b>BPF32</b>	<b>2.15</b>	50
3/8"	3/8"	<b>BPF33</b>	<b>2.65</b>	50
3/8"	1/2"	<b>BPF34</b>	<b>4.30</b>	50
1/2"	1/4"	<b>BPF42</b>	<b>4.75</b>	50
1/2"	3/8"	<b>BPF43</b>	<b>3.05</b>	50
1/2"	1/2"	<b>BPF44</b>	<b>3.80</b>	25
1/2"	3/4"	<b>BPF46</b>	<b>7.70</b>	25
5/8"	1/2"	<b>BPF54</b>	<b>3.50</b>	25
3/4"	3/4"	<b>BPF66</b>	<b>6.90</b>	25

Note: Add "BC" suffix to part number for brass cap option.

### NPSM Swivel Hose Barb Fittings



**Female Swivel Hose Barbs**  
Gasket Seat Type

Hose I.D.	NPSM	Part #	Price/E	Pkg Qty
1/4"	1/8"	<b>280-0402</b>	<b>\$5.15</b>	100
1/4"	1/4"	<b>280-0404</b>	<b>3.45</b>	100
3/8"	1/4"	<b>280-0604</b>	<b>4.05</b>	50
3/8"	3/8"	<b>280-0606</b>	<b>5.35</b>	50
3/8"	1/2"	<b>280-0608</b>	<b>7.45</b>	50
1/2"	1/2"	<b>280-0808</b>	<b>6.75</b>	25
3/4"	3/4"	<b>280-1212</b>	<b>12.45</b>	25

Note: Add "BC" suffix to part number for brass cap option.



**Female Swivel Hose Barbs**  
Ball Seat Type

Hose I.D.	NPSM	Part #	Price/E	Pkg Qty
1/4"	1/8"	<b>BPFS21</b>	<b>\$4.35</b>	100
1/4"	1/4"	<b>BPFS22</b>	<b>3.40</b>	50
1/4"	3/8"	<b>BPFS23</b>	<b>3.95</b>	25
3/8"	1/4"	<b>BPFS32</b>	<b>3.90</b>	50
3/8"	3/8"	<b>BPFS33</b>	<b>4.75</b>	50
1/2"	1/2"	<b>BPFS44</b>	<b>5.55</b>	50
1/2"	3/4"	<b>BPFS46</b>	<b>7.70</b>	25
3/4"	3/4"	<b>BPFS66</b>	<b>10.75</b>	25

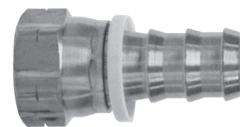
Note: Add "BC" suffix to part number for brass cap option.

Optional Pkg./Box Quantity Shown

**45° SAE Hose Barb Fittings**



**Male Hose Barbs**  
45° SAE



**Female Swivel Hose Barbs**  
45° SAE

Hose I.D.	UNF Thread	Part #	Price/E	Pkg Qty
1/4"	7/16"-20	<b>282-0407</b>	<b>\$2.70</b>	100
1/4"	1/2"-20	<b>282-0408</b>	<b>2.20</b>	100
3/8"	5/8"-18 *	<b>282-0610</b>	<b>3.20</b>	100
1/2"	3/4"-16	<b>282-0812</b>	<b>5.60</b>	50
3/4"	1-1/16"-14 *	<b>282-1217</b>	<b>10.50</b>	25

Hose I.D.	UNF Thread	Part #	Price/E	Pkg Qty
1/4"	5/8" - 18 *	<b>284-0410</b>	<b>\$3.25</b>	50
5/16"	5/8" - 18 *	<b>284-0510</b>	<b>3.30</b>	50
3/8"	5/8" - 18 *	<b>284-0610</b>	<b>2.70</b>	100
3/4"	1-1/16" - 14 *	<b>284-1217</b>	<b>7.80</b>	25

\* Notch in hex for SAE identification.  
Note: Add "BC" suffix to part number for brass cap option.

\* Notch in hex for SAE identification.  
Note: Add "BC" suffix to part number for brass cap option.

**37° JIC Hose Barb Fittings**



**Male Hose Barbs**  
37° JIC



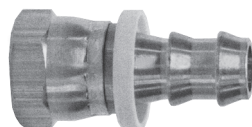
**Female Swivel Hose Barbs**  
45° SAE / 37° JIC (Dual Angle Seat)

Hose I.D.	UNF Thread	Part #	Price/E	Pkg Qty
1/4"	7/16"-20	<b>286-0407</b>	<b>\$2.70</b>	100
1/4"	9/16"-18	<b>286-0409</b>	<b>4.00</b>	100
3/8"	9/16"-18	<b>286-0609</b>	<b>4.00</b>	50
1/2"	3/4"-16	<b>286-0812</b>	<b>4.80</b>	50
3/4"	1-1/16"-12	<b>286-1217</b>	<b>9.80</b>	25

Hose I.D.	UNF Thread	Part #	Price/E	Pkg Qty
1/4"	7/16"-20	<b>287-0407</b>	<b>\$2.55</b>	100
1/4"	1/2"-20	<b>287-0408</b>	<b>2.75</b>	100
3/8"	3/4"-16	<b>287-0612</b>	<b>4.30</b>	25
1/2"	3/4"-16	<b>287-0812</b>	<b>3.45</b>	25
1/2"	7/8"-14	<b>287-0814</b>	<b>5.80</b>	25
5/8"	7/8"-14	<b>287-1014</b>	<b>6.00</b>	

Note: Add "BC" suffix to part number for brass cap option.

Note: Add "BC" suffix to part number for brass cap option.



**Female Swivel Hose Barbs**  
37° JIC

Hose I.D.	UNF Thread	Part #	Price/E	Pkg Qty
1/4"	9/16"-18	<b>288-0409</b>	<b>\$3.20</b>	50
3/8"	9/16"-18	<b>288-0609</b>	<b>2.75</b>	50
3/4"	1-1/16"-12	<b>288-1217</b>	<b>7.05</b>	25

Note: Add "BC" suffix to part number for brass cap option.

Optional Pkg./Box Quantity Shown

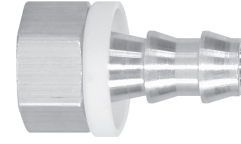
**SAE Inverted Flare Fittings**



**Male Swivel Hose Barbs**

Hose I.D.	UN Thread	Part #	Price/E	Pkg Qty
1/4"	3/8" - 24	<b>290-0406</b>	<b>\$3.70</b>	100
1/4"	7/16" - 24	<b>290-0407</b>	<b>2.85</b>	100
1/4"	1/2" - 20	<b>290-0408</b>	<b>3.05</b>	100
5/16"	1/2" - 20	<b>290-0508</b>	<b>3.85</b>	50
5/16"	5/8" - 18	<b>290-0510</b>	<b>4.90</b>	50
3/8"	1/2" - 20	<b>290-0608</b>	<b>3.30</b>	50
3/8"	5/8" - 18	<b>290-0610</b>	<b>3.50</b>	100
1/2"	3/4" - 18	<b>290-0812</b>	<b>5.75</b>	50
5/8"	7/8" - 18	<b>290-1014</b>	<b>7.90</b>	25

Note: Add "BC" suffix to part number for brass cap option.



**Rigid Female Hose Barbs**

Hose I.D.	UN Thread	Part #	Price/E	Pkg Qty
1/4"	3/8" - 24	<b>292-0406</b>	<b>\$3.15</b>	100
1/4"	7/16" - 24	<b>292-0407</b>	<b>3.00</b>	100
1/4"	1/2" - 20	<b>292-0408</b>	<b>2.95</b>	100
3/8"	1/2" - 20	<b>292-0608</b>	<b>4.40</b>	50
3/8"	5/8" - 18	<b>292-0610</b>	<b>4.90</b>	50
1/2"	3/4" - 18	<b>292-0812</b>	<b>5.85</b>	25

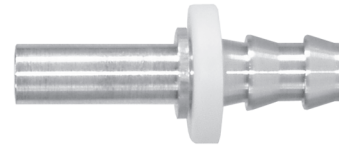
Note: Add "BC" suffix to part number for brass cap option.



**Rigid Tube Hose Barbs**

Hose I.D.	Tube O.D.	Part #	Price/E	Pkg Qty
1/4"	3/16"	<b>294-0403</b>	<b>\$2.35</b>	100
1/4"	1/4"	<b>294-0404</b>	<b>1.60</b>	100
1/4"	5/16"	<b>294-0405</b>	<b>2.00</b>	100
3/8"	3/8"	<b>294-0606</b>	<b>2.25</b>	50
1/2"	1/2"	<b>294-0808</b>	<b>3.30</b>	50
5/8"	5/8"	<b>294-1010</b>	<b>5.85</b>	25
3/4"	3/4"	<b>294-1212</b>	<b>5.75</b>	25

Note: Add "BC" suffix to part number for brass cap option.



**Hose Menders**

Hose I.D.	Part #	Price/E	Pkg Qty
1/4"	<b>BPM2</b>	<b>\$1.90</b>	100
5/16"	<b>BPM25</b>	<b>1.95</b>	100
3/8"	<b>BPM3</b>	<b>2.20</b>	50
1/2"	<b>BPM4</b>	<b>2.85</b>	50
5/8"	<b>BPM5</b>	<b>4.40</b>	25
3/4"	<b>BPM6</b>	<b>5.35</b>	25

Note: Add "BC" suffix to part number for brass cap option.



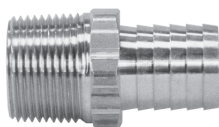
**90° Hose to Male NPTF Elbows**

Hose I.D.	NPTF Thread	Part #	Price/E	Pkg Qty
1/4"	1/8"-27	<b>273-0402</b>	<b>\$2.75</b>	100
1/4"	1/4"-18	<b>273-0404</b>	<b>3.20</b>	50
3/8"	1/4"-18	<b>273-0604</b>	<b>3.20</b>	50
3/8"	3/8"-18	<b>273-0606</b>	<b>4.15</b>	25
1/2"	3/8"-18	<b>273-0806</b>	<b>5.20</b>	25
1/2"	1/2"-14	<b>273-0808</b>	<b>6.05</b>	25
3/4"	3/4"-14	<b>273-1212</b>	<b>10.55</b>	25

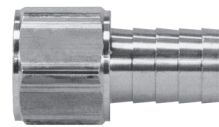


Optional Pkg./Box Quantity Shown

## Brass Barbed Hose Fittings



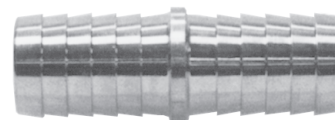
Male Inserts



Solid Female Inserts

Hose I.D.	NPTF	Part #	Price/E	Pkg Qty
1/8"	1/8"	<b>BN11</b>	<b>\$1.20</b>	100
1/8"	1/4"	<b>BN122</b>	<b>1.45</b>	100
3/16"	1/8"	<b>BN151</b>	<b>0.95</b>	100
3/16"	1/4"	<b>BN152</b>	<b>1.25</b>	100
1/4"	1/8"	<b>BN21</b>	<b>1.10</b>	100
1/4"	1/4"	<b>BN22</b>	<b>.95</b>	100
1/4"	3/8"	<b>BN23</b>	<b>1.65</b>	100
1/4"	1/2"	<b>BN24</b>	<b>3.00</b>	50
5/16"	1/8"	<b>BN251</b>	<b>1.20</b>	100
5/16"	1/4"	<b>BN252</b>	<b>1.25</b>	50
5/16"	3/8"	<b>BN253</b>	<b>1.90</b>	50
3/8"	1/8"	<b>BN31</b>	<b>1.50</b>	100
3/8"	1/4"	<b>BN32</b>	<b>.95</b>	100
3/8"	3/8"	<b>BN33</b>	<b>1.50</b>	50
3/8"	1/2"	<b>BN34</b>	<b>2.50</b>	25
3/8"	3/4"	<b>BN36</b>	<b>4.15</b>	25
1/2"	1/4"	<b>BN42</b>	<b>1.80</b>	50
1/2"	3/8"	<b>BN43</b>	<b>1.60</b>	50
1/2"	1/2"	<b>BN44</b>	<b>2.15</b>	50
1/2"	3/4"	<b>BN46</b>	<b>3.70</b>	25
5/8"	3/8"	<b>BN53</b>	<b>2.15</b>	50
5/8"	1/2"	<b>BN54</b>	<b>2.65</b>	25
5/8"	3/4"	<b>BN56</b>	<b>3.90</b>	50
3/4"	1/2"	<b>BN64</b>	<b>2.90</b>	50
3/4"	3/4"	<b>BN66</b>	<b>3.25</b>	25
1"	3/4"	<b>BN86</b>	<b>4.40</b>	25
1"	1"	<b>BN88</b>	<b>7.70</b>	10
1-1/4"	3/4"	<b>BN106</b>	<b>7.35</b>	10
1-1/4"	1"	<b>BN108</b>	<b>7.55</b>	10

Hose I.D.	NPTF	Part #	Price/E	Pkg Qty
1/8"	1/8"	<b>BF11</b>	<b>\$1.40</b>	100
1/8"	1/4"	<b>BF12</b>	<b>2.50</b>	100
3/16"	1/8"	<b>BF151</b>	<b>1.40</b>	100
3/16"	1/4"	<b>BF152</b>	<b>2.15</b>	100
1/4"	1/8"	<b>BF21</b>	<b>1.20</b>	100
1/4"	1/4"	<b>BF22</b>	<b>1.50</b>	50
1/4"	3/8"	<b>BF23</b>	<b>1.90</b>	50
5/16"	1/8"	<b>BF251</b>	<b>1.95</b>	100
5/16"	1/4"	<b>BF252</b>	<b>2.15</b>	100
5/16"	3/8"	<b>BF253</b>	<b>2.60</b>	100
3/8"	1/8"	<b>BF31</b>	<b>1.80</b>	100
3/8"	1/4"	<b>BF32</b>	<b>1.55</b>	50
3/8"	3/8"	<b>BF33</b>	<b>2.10</b>	50
3/8"	1/2"	<b>BF34</b>	<b>3.40</b>	50
1/2"	1/4"	<b>BF42</b>	<b>2.30</b>	50
1/2"	3/8"	<b>BF43</b>	<b>2.70</b>	50
1/2"	1/2"	<b>BF44</b>	<b>3.25</b>	50
3/4"	3/4"	<b>BF66</b>	<b>5.80</b>	25
1"	3/4"	<b>BF86</b>	<b>6.75</b>	25
1"	1"	<b>BF88</b>	<b>9.60</b>	10



Hose Menders

Hose Size	Part #	Price/E	Pkg Qty
1/8"	<b>BM1</b>	<b>\$1.30</b>	100
3/16"	<b>BM15</b>	<b>1.20</b>	100
1/4"	<b>BM2</b>	<b>1.10</b>	100
5/16"	<b>BM25</b>	<b>1.35</b>	100
3/8"	<b>BM3</b>	<b>1.40</b>	100
1/2"	<b>BM4</b>	<b>1.95</b>	50
5/8"	<b>BM5</b>	<b>2.70</b>	50
3/4"	<b>BM6</b>	<b>3.10</b>	50
1"	<b>BM8</b>	<b>5.10</b>	10

Note: stainless steel male inserts are available on page 201.

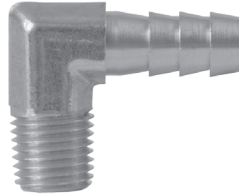
Optional Pkg./Box Quantity Shown

## Brass Barbed Elbow Hose Fittings



Male Insert 45° Elbows

Hose I.D.	NPTF Thread	Part #	Price/E	Pkg Qty
1/4"	1/8"	<b>139-0402</b>	<b>\$5.00</b>	25
1/4"	1/4"	<b>139-0404</b>	<b>5.10</b>	25
3/8"	1/8"	<b>139-0602</b>	<b>3.85</b>	25
3/8"	1/4"	<b>139-0604</b>	<b>3.40</b>	25
3/8"	3/8"	<b>139-0606</b>	<b>5.25</b>	25
1/2"	1/4"	<b>139-0804</b>	<b>6.35</b>	25
1/2"	3/8"	<b>139-0806</b>	<b>5.25</b>	25
1/2"	1/2"	<b>139-0808</b>	<b>7.30</b>	25



Male Insert 90° Elbows

Hose I.D.	NPTF Thread	Part #	Price/E	Pkg Qty	Hose I.D.	NPTF Thread	Part #	Price/E	Pkg Qty
3/16"	1/8"	<b>EL15H1M</b>	<b>\$2.35</b>	50	1/2"	1/4"	<b>EL4H2M</b>	<b>\$3.40</b>	25
1/4"	1/8"	<b>EL2H1M</b>	<b>3.05</b>	50	1/2"	3/8"	<b>EL4H3M</b>	<b>4.55</b>	25
1/4"	1/4"	<b>EL2H2M</b>	<b>2.75</b>	50	1/2"	1/2"	<b>EL4H4M</b>	<b>5.40</b>	25
1/4"	3/8"	<b>EL2H3M</b>	<b>3.85</b>	50	5/8"	3/8"	<b>EL5H3M</b>	<b>6.35</b>	25
5/16"	1/8"	<b>EL25H1M</b>	<b>3.05</b>	25	5/8"	1/2"	<b>EL5H4M</b>	<b>7.70</b>	25
5/16"	1/4"	<b>EL25H2M</b>	<b>2.90</b>	25	3/4"	1/2"	<b>EL6H4M</b>	<b>10.50</b>	25
5/16"	3/8"	<b>EL25H3M</b>	<b>4.40</b>	25	3/4"	3/4"	<b>EL6H6M</b>	<b>13.00</b>	25
3/8"	1/8"	<b>EL3H1M</b>	<b>2.55</b>	50	1"	3/4"	<b>EL8H6M</b>	<b>14.65</b>	10
3/8"	1/4"	<b>EL3H2M</b>	<b>2.65</b>	50	1"	1"	<b>EL8H8M</b>	<b>17.25</b>	10
3/8"	3/8"	<b>EL3H3M</b>	<b>3.40</b>	50					

## Splicers



Hose Barb 90° Elbow Splicers

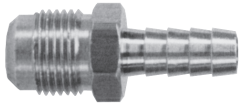
Hose I.D.	Part #	Price/E	Pkg Qty
1/4"	<b>177-0404</b>	<b>\$2.50</b>	25
5/16"	<b>177-0505</b>	<b>3.15</b>	25
3/8"	<b>177-0606</b>	<b>3.20</b>	25
1/2"	<b>177-0808</b>	<b>4.50</b>	25



Hose Barb Tee Splicers

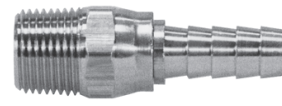
Hose I.D.	Part #	Price/E	Pkg Qty
3/16"	<b>179-0303</b>	<b>\$3.40</b>	25
1/4"	<b>179-0404</b>	<b>3.20</b>	25
5/16"	<b>179-0505</b>	<b>3.80</b>	25
3/8"	<b>179-0606</b>	<b>3.85</b>	25
1/2"	<b>179-0808</b>	<b>5.55</b>	25
5/8"	<b>179-1010</b>	<b>8.55</b>	25
3/4"	<b>179-1212</b>	<b>10.60</b>	25

## Brass Barbed Hose Fittings



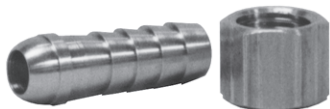
**Male Hose Barbs**  
45° SAE

Hose I.D.	UNF Thread	Part #	Price/E	Pkg Qty
3/16"	7/16"-20	<b>142-0307</b>	<b>\$2.00</b>	100
1/4"	7/16" - 20	<b>142-0407</b>	<b>1.50</b>	100
1/4"	5/8" - 18	<b>142-0410</b>	<b>1.60</b>	100
5/16"	1/2" - 20	<b>142-0508</b>	<b>2.55</b>	100
3/8"	5/8" - 18	<b>142-0610</b>	<b>1.60</b>	50
3/8"	3/4" - 16	<b>142-0612</b>	<b>2.70</b>	50
1/2"	3/4" - 16	<b>142-0812</b>	<b>3.25</b>	25



**Male Swivel Inserts**

Hose I.D.	NPTF Size	Part #	Price/E
1/4"	1/4"	<b>103-0404</b>	<b>\$5.40</b>
3/8"	1/4"	<b>103-0604</b>	<b>8.00</b>
3/8"	3/8"	<b>103-0606</b>	<b>8.50</b>
1/2"	3/8"	<b>103-0806</b>	<b>10.00</b>
1/2"	1/2"	<b>103-0808</b>	<b>10.00</b>
3/4"	3/4"	<b>103-1212</b>	<b>10.00</b>



**Female Swivel Hose Barbs**  
Ball Seat Type

Hose I.D.	NPSM	Part #	Price/E	Pkg Qty
1/8"	1/8"	<b>BFS11</b>	<b>\$1.70</b>	100
3/16"	1/8"	<b>BFS151</b>	<b>1.70</b>	100
3/16"	1/4"	<b>BFS152</b>	<b>1.95</b>	100
1/4"	1/8"	<b>BFS21</b>	<b>1.85</b>	100
1/4"	1/4"	<b>BFS22</b>	<b>1.60</b>	100
1/4"	3/8"	<b>BFS23</b>	<b>2.20</b>	100
5/16"	1/4"	<b>BFS252</b>	<b>1.95</b>	100
5/16"	3/8"	<b>BFS253</b>	<b>2.45</b>	50
3/8"	1/4"	<b>BFS32</b>	<b>1.75</b>	100
3/8"	3/8"	<b>BFS33</b>	<b>2.30</b>	100
3/8"	1/2"	<b>BFS34</b>	<b>3.50</b>	100
1/2"	3/8"	<b>BFS43</b>	<b>2.55</b>	100
1/2"	1/2"	<b>BFS44</b>	<b>3.30</b>	100
3/4"	3/4"	<b>BFS66</b>	<b>5.05</b>	25



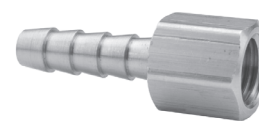
**Female Swivel Hose Barbs**  
Gasket Seat Type

Hose I.D.	NPSM	Part #	Price/E	Pkg Qty
1/8"	1/8"	<b>126-0202</b>	<b>\$2.40</b>	100
3/16"	1/8"	<b>126-0302</b>	<b>1.95</b>	100
3/16"	1/4"	<b>126-0304</b>	<b>3.40</b>	100
1/4"	1/8"	<b>126-0402</b>	<b>3.55</b>	100
1/4"	1/4"	<b>126-0404</b>	<b>2.30</b>	100
1/4"	3/8"	<b>126-0406</b>	<b>3.45</b>	50
5/16"	1/4"	<b>126-0504</b>	<b>3.80</b>	100
3/8"	1/4"	<b>126-0604</b>	<b>2.80</b>	100
3/8"	3/8"	<b>126-0606</b>	<b>3.10</b>	50
3/8"	1/2"	<b>126-0608</b>	<b>4.75</b>	50
1/2"	3/8"	<b>126-0806</b>	<b>3.55</b>	50
1/2"	1/2"	<b>126-0808</b>	<b>4.45</b>	50
3/4"	3/4"	<b>126-1212</b>	<b>6.25</b>	25



**Female Swivel Hose Barbs**  
45° SAE

Hose I.D.	UNF Thread	Part #	Price/E	Pkg Qty
3/16"	3/8" - 24	<b>144-0306</b>	<b>\$1.85</b>	100
1/4"	5/8" - 18	<b>144-0410</b>	<b>2.15</b>	100
5/16"	5/8" - 18	<b>144-0510</b>	<b>2.35</b>	100
3/8"	5/8" - 18	<b>144-0610</b>	<b>2.35</b>	100
1/2"	3/4" - 16	<b>144-0812</b>	<b>3.75</b>	100



**Female Swivel Hose Barbs**  
45° SAE / 37° JIC (Dual Angle Seat)

Hose I.D.	UNF Thread	Part #	Price/E	Pkg Qty
3/16"	7/16" - 20	<b>143-0307</b>	<b>\$1.80</b>	100
1/4"	7/16" - 20	<b>143-0407</b>	<b>1.75</b>	100
1/4"	1/2" - 20	<b>143-0408</b>	<b>2.10</b>	100
5/16"	1/2" - 20	<b>143-0508</b>	<b>2.20</b>	100
3/8"	3/4" - 16	<b>143-0612</b>	<b>3.15</b>	100
1/2"	3/4" - 16	<b>143-0812</b>	<b>3.35</b>	100
1/2"	7/8" - 14	<b>143-0814</b>	<b>4.15</b>	50



**Female Swivel Hose Barb**  
37° JIC

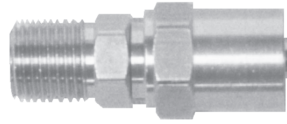
Hose I.D.	UNF Thread	Part #	Price/E	Pkg Qty
3/8"	9/16"-18	<b>145-0609</b>	<b>\$2.15</b>	100

Optional Pkg./Box Quantity Shown

## Brass Reusable Fittings

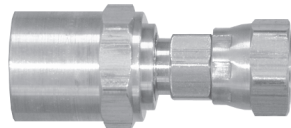
Reusable fittings are recommended for low pressure air hose applications when a more durable hose connection is required or ease of making a repair is a major consideration. **Caution:** Check hose O.D. and I.D. accurately before ordering.

Maximum working pressure: **250 PSI**



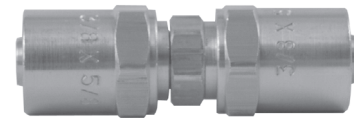
### Reusable Male Fittings

Part #	Hose I.D.	NPTF Thread	Hose O.D.	Price/E	Pkg Qty	Part #	Hose I.D.	NPTF Thread	Hose O.D.	Price/E	Pkg Qty
<b>BN21RU50</b>	1/4"	1/8"	1/2"	<b>\$4.45</b>	100	<b>BN32RU62</b>	3/8"	1/4"	5/8"	<b>\$4.05</b>	50
<b>BN21RU56</b>	1/4"	1/8"	9/16"	<b>4.90</b>	100	<b>BN32RU68</b>	3/8"	1/4"	11/16"	<b>4.25</b>	50
<b>BN21RU62</b>	1/4"	1/8"	5/8"	<b>5.00</b>	100	<b>BN32RU75</b>	3/8"	1/4"	3/4"	<b>4.15</b>	50
<b>BN22RU50</b>	1/4"	1/4"	1/2"	<b>3.55</b>	50	<b>BN33RU62</b>	3/8"	3/8"	5/8"	<b>4.35</b>	50
<b>BN22RU56</b>	1/4"	1/4"	9/16"	<b>3.85</b>	50	<b>BN33RU68</b>	3/8"	3/8"	11/16"	<b>4.70</b>	50
<b>BN22RU62</b>	1/4"	1/4"	5/8"	<b>3.90</b>	50	<b>BN33RU75</b>	3/8"	3/8"	3/4"	<b>4.45</b>	50
<b>BN23RU50</b>	1/4"	3/8"	1/2"	<b>5.10</b>	50	<b>BN34RU62</b>	3/8"	1/2"	5/8"	<b>7.40</b>	50
<b>BN23RU56</b>	1/4"	3/8"	9/16"	<b>5.15</b>	50	<b>BN34RU68</b>	3/8"	1/2"	11/16"	<b>7.65</b>	50
<b>BN23RU62</b>	1/4"	3/8"	5/8"	<b>5.20</b>	50	<b>BN34RU75</b>	3/8"	1/2"	3/4"	<b>7.50</b>	50
<b>BN252RU56</b>	5/16"	1/4"	9/16"	<b>5.00</b>	50	<b>BN42RU87</b>	1/2"	1/4"	7/8"	<b>10.50</b>	25
<b>BN252RU62</b>	5/16"	1/4"	5/8"	<b>4.25</b>	50	<b>BN42RU93</b>	1/2"	1/4"	15/16"	<b>11.30</b>	25
<b>BN252RU68</b>	5/16"	1/4"	11/16"	<b>5.45</b>	50	<b>BN42RU99</b>	1/2"	1/4"	1"	<b>12.10</b>	25
<b>BN253RU56</b>	5/16"	3/8"	9/16"	<b>7.35</b>	50	<b>BN43RU87</b>	1/2"	3/8"	7/8"	<b>9.75</b>	25
<b>BN253RU62</b>	5/16"	3/8"	5/8"	<b>6.10</b>	50	<b>BN43RU93</b>	1/2"	3/8"	15/16"	<b>10.50</b>	25
<b>BN253RU68</b>	5/16"	3/8"	11/16"	<b>7.55</b>	50	<b>BN43RU99</b>	1/2"	3/8"	1"	<b>11.35</b>	25
						<b>BN44RU87</b>	1/2"	1/2"	7/8"	<b>12.10</b>	25
						<b>BN44RU93</b>	1/2"	1/2"	15/16"	<b>9.65</b>	25
						<b>BN44RU99</b>	1/2"	1/2"	1"	<b>10.45</b>	25



### Reusable Female Swivels

Part #	Hose I.D.	NPSM Thread	Hose O.D.	Price/E	Pkg Qty
<b>185-4084</b>	1/4"	1/4"	1/2"	<b>\$5.35</b>	50
<b>185-4094</b>	1/4"	1/4"	9/16"	<b>5.60</b>	50
<b>185-4104</b>	1/4"	1/4"	5/8"	<b>5.65</b>	50
<b>185-4086</b>	1/4"	3/8"	1/2"	<b>6.80</b>	50
<b>185-4096</b>	1/4"	3/8"	9/16"	<b>7.00</b>	50
<b>185-4106</b>	1/4"	3/8"	5/8"	<b>7.05</b>	50
<b>185-5094</b>	5/16"	1/4"	9/16"	<b>6.85</b>	50
<b>185-5104</b>	5/16"	1/4"	5/8"	<b>5.70</b>	50
<b>185-5114</b>	5/16"	1/4"	11/16"	<b>7.40</b>	50
<b>185-6104</b>	3/8"	1/4"	5/8"	<b>6.10</b>	50
<b>185-6114</b>	3/8"	1/4"	11/16"	<b>6.25</b>	50
<b>185-6124</b>	3/8"	1/4"	3/4"	<b>6.15</b>	50
<b>185-6106</b>	3/8"	3/8"	5/8"	<b>7.40</b>	50
<b>185-6116</b>	3/8"	3/8"	11/16"	<b>7.65</b>	50
<b>185-6126</b>	3/8"	3/8"	3/4"	<b>7.50</b>	50
<b>185-8148</b>	1/2"	1/2"	7/8"	<b>11.80</b>	20
<b>185-8158</b>	1/2"	1/2"	15/16"	<b>12.70</b>	20
<b>185-8168</b>	1/2"	1/2"	1"	<b>14.00</b>	20



### Reusable Hose Splicers

Part #	Hose I.D.	Hose O.D.	Price/E	Pkg Qty
<b>187-0408</b>	1/4"	1/2"	<b>\$5.05</b>	50
<b>187-0409</b>	1/4"	9/16"	<b>5.35</b>	50
<b>187-0410</b>	1/4"	5/8"	<b>5.60</b>	50
<b>187-0610</b>	3/8"	5/8"	<b>7.20</b>	25
<b>187-0611</b>	3/8"	11/16"	<b>7.05</b>	25
<b>187-0612</b>	3/8"	3/4"	<b>7.20</b>	25

Optional Pkg./Box Quantity Shown

## Grease Whip Hose Assemblies

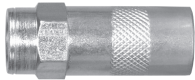


- One piece brass crimp couplings
- 1/8"-27 male NPT thread, solid base
- U.S. manufactured 3/16" I.D. hose - exceeds SAE 100R1-AT
- For use with hand grease guns only

Part #	Assembly Length	Retail Pack	Price/E
<b>GWH-0800</b>	8"	n/a	<b>\$6.75</b>
<b>GWH-1200</b>	12"	Add "R" suffix to part number	<b>8.15</b>
<b>GWH-1800</b>	18"	Add "R" suffix to part number	<b>10.25</b>
<b>GWH-2400</b>	24"	n/a	<b>12.40</b>
<b>GWH-3600</b>	36"	n/a	<b>16.60</b>
<b>GWH-4800</b>	48"	n/a	<b>20.75</b>
<b>GWH-6000</b>	60"	n/a	<b>25.25</b>

## Grease Whip Hose Coupler and Fittings

Male and female fittings are designed to be crimped on.



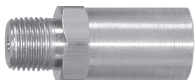
**Grease Hose Coupler**

Part #	Description	Price/E	Pkg Qty
<b>GWH-C</b>	Grease hose coupler	<b>\$6.40</b>	25



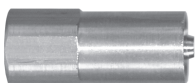
**Male NPT Thread,  
Drilled and  
Chamfered Base**

Part #	Description	Price/E	Pkg Qty
<b>001-0055</b>	1/8"-27 male NPT thread, drilled and chamfered base	<b>\$1.55</b>	100



**Male NPT Thread,  
Solid Base**

Part #	Description	Price/E	Pkg Qty
<b>001-0260</b>	1/8"-27 male NPT thread, solid base	<b>\$1.20</b>	100

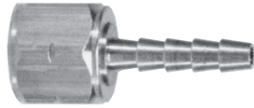


**Female NPT Thread**

Part #	Description	Price/E	Pkg Qty
<b>001-0860</b>	1/8"-27 female NPT thread	<b>\$2.40</b>	100



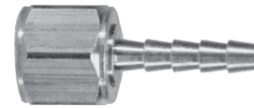
## Brass Oxy-Acetylene Hose Couplings



### Acetylene Couplings

Left-hand thread for Acetylene line x hose shank

Hose Size	Part #	Price/E	Left UNF Thread	Hex
3/16"	<b>OA69</b>	<b>\$1.80</b>	3/8" - 24	7/16"
3/16"	<b>OA70</b>	<b>1.95</b>	9/16" - 18	11/16"
1/4"	<b>OA71</b>	<b>1.85</b>	9/16" - 18	11/16"
5/16"	<b>OA72</b>	<b>1.85</b>	9/16" - 18	11/16"
3/8"	<b>OA73</b>	<b>1.85</b>	9/16" - 18	11/16"

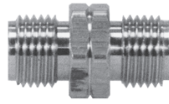


### Oxygen Couplings

Right-hand thread for Oxygen line x hose shank

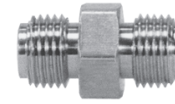
Hose Size	Part #	Price/E	Right UNF Thread	Hex
3/16"	<b>OA59</b>	<b>\$1.80</b>	3/8" - 24	7/16"
3/16"	<b>OA60</b>	<b>1.95</b>	9/16" - 18	11/16"
1/4"	<b>OA61</b>	<b>1.85</b>	9/16" - 18	11/16"
5/16"	<b>OA62</b>	<b>1.85</b>	9/16" - 18	11/16"
3/8"	<b>OA63</b>	<b>1.85</b>	9/16" - 18	11/16"

## Brass Oxy-Acetylene Connecting Spuds



Left-hand thread x Left-hand thread

Hose Size	Part #	Price/E	Left UNF Thread	Hex
3/16"	<b>OA52</b>	<b>\$2.25</b>	9/16" - 18	11/16"
1/4"	<b>OA52</b>	<b>2.25</b>	9/16" - 18	11/16"
5/16"	<b>OA52</b>	<b>2.25</b>	9/16" - 18	11/16"
3/8"	<b>OA52</b>	<b>2.25</b>	9/16" - 18	11/16"

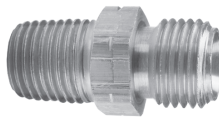


Right-hand thread x Right-hand thread

Hose Size	Part #	Price/E	Right UNF Thread	Hex
3/16"	<b>OA50</b>	<b>\$2.25</b>	9/16" - 18	11/16"
1/4"	<b>OA50</b>	<b>2.25</b>	9/16" - 18	11/16"
5/16"	<b>OA50</b>	<b>2.25</b>	9/16" - 18	11/16"
3/8"	<b>OA50</b>	<b>2.25</b>	9/16" - 18	11/16"

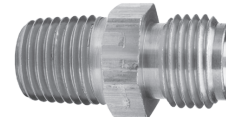
For connecting two hoses together.

## Brass Oxy-Acetylene Adapters



Left-hand thread x NPTF

Part #	Price/E	Left NF Thread	NPTF Thread	Hex
<b>158-0904</b>	<b>\$2.35</b>	9/16" - 18	1/4" - 18	5/8"
<b>158-0906</b>	<b>2.60</b>	9/16" - 18	3/8" - 18	11/16"



Right-hand thread x NPTF

Part #	Price/E	Right NF Thread	NPTF Thread	Hex
<b>156-0904</b>	<b>\$2.35</b>	9/16" - 18	1/4" - 18	5/8"
<b>156-0906</b>	<b>2.60</b>	9/16" - 18	3/8" - 18	11/16"

## Brass Oxy-Acetylene Ferrules

Part #	Price/E	Inside Dimensions	Overall Length	Metal Gauge	Std. Ind. Part No.	Pkg Qty
<b>BFO448</b>	<b>\$.36</b>	.448" x 0.890"	15/32"	.019"	9116	25
<b>BFO474</b>	<b>.34</b>	.474" x 0.943"	15/32"	.019"	9979	25
<b>BFO535</b>	<b>.43</b>	.535" x 1.071"	3/4"	.024"	9940P	25
<b>BFO593</b>	<b>.45</b>	.593" x 1.109"	3/4"	.024"	9593	25
<b>BFO700</b>	<b>1.48</b>	.700" x 1.325"	3/4"	.025"	8337	25



Sold in package quantities only.

### Stainless Steel Ferrules



Part #	Price/E*	Pkg Qty	Ferrule ID	Ferrule Length	End Hole Size	Metal Gauge	Std Ind Part #	Ribbed Die**	Plain Die**
SFM562	\$.68	25	.561"	1"	7/16"	.024"	7325	R37	P38
SFM625	.94	25	.625"	1"	7/16"	.024"	7327	R35	P36
SFM656	.96	25	.656"	1"	7/16"	.024"	7328	R34	P35
SFM687	.82	25	.687"	1"	1/2"	.024"	7329	R33	P34
SFM750	1.04	25	.750"	1"	5/8"	.024"	7331	R30	P31
SFW1175	1.38	25	1.175"	.844"	.875"	.024"	7088A	R13	P14

### Brass Ferrules

#### Ferrules for Air

Part #	Price/E*	Pkg Qty	Ferrule ID	Ferrule Length	End Hole Size	Metal Gauge	Std Ind Part #	Ribbed Die**	Plain Die**
BFM478	\$.25	50	.478"	11/16"	21/64"	.024"	4750	R41	P41/P42
BFM500	.32	50	.500"	1"	11/32"	.024"	7322	R40	P40
BFM525	.33	50	.525"	1"	3/8"	.024"	7323	R39	P39
BFM531	.34	50	.531"	1"	7/16"	.024"	7324	R39	P39
BFM562	.36	50	.561"	1"	7/16"	.024"	7325	R37	P38
BFM593	.37	50	.593"	1"	7/16"	.024"	7326	R36	P37
BFM625	.39	50	.625"	1"	7/16"	.024"	7327	R35	P36
BFM656	.41	50	.656"	1"	7/16"	.024"	7328	R34	P35
BFM687	.41	50	.687"	1"	1/2"	.024"	7329	R33	P34
BFM718	.44	50	.718"	1"	5/8"	.024"	7330	R31	P32
BFM718B	.43	50	.718"	1"	1/2"	.024"	7330B	R31	P32
BFM750	.44	50	.750"	1"	5/8"	.024"	7331	R30	P31
BFM750B	.42	50	.750"	1"	1/2"	.024"	7331B	R30	P31
BFM781	.46	50	.781"	1"	5/8"	.024"	7332	R29	P30
BFM781B	.45	50	.781"	1"	1/2"	.024"	7332B	R29	P30
BFM812	.47	50	.812"	1"	5/8"	.024"	7333	R28	P29
BFL380	.16	50	.380"	1/2"	17/64"	.016"	622	R44~	P45
BFL400	.26	50	.400"	15/32"	17/64"	.020"	619	R44	P44~
BFL410	.18	50	.410"	1/2"	17/64"	.016"	620	R43	P44
BFL450	.18	50	.450"	9/16"	11/32"	.016"	769	R41	P42
BFL500	.18	50	.500"	1/2"	11/32"	.016"	624	R40	P41
BFL525	.18	50	.525"	1/2"	11/32"	.016"	625	R39	P40
BFL548	.18	50	.548"	31/64"	3/8"	.015"	626	R38	P39
BFL564	.25	50	.564"	3/4"	3/8"	.019"	3588	R37	P38
BFL575	.18	50	.575"	31/64"	15/32"	.019"	KK	R37	P38
BFL600	.20	50	.600"	1/2"	1/2"	.019"	JJ	R36	P37
BFL625	.21	50	.625"	1/2"	1/2"	.019"	II	R35	P36
BFL650	.22	50	.650"	1/2"	1/2"	.019"	HH	R34	P35
BFL675	.24	50	.675"	33/64"	1/2"	.019"	GG	R34	P34
BFL725	.24	50	.725"	17/32"	1/2"	.019"	EE	R31	P32
BFL750	.25	50	.750"	17/32"	1/2"	.019"	DD	R30	P32
BFL775	.43	50	.775"	17/32"	1/2"	.016"	CC	R31	P31

#### BFM

for Medium Weight Hose



#### BFL

for Light Weight Hose



#### BFMW

for Medium Weight Water Hose



#### Ferrules for Fluid

Part #	Price/E*	Pkg Qty	Ferrule ID	Ferrule Length	End Hole Size	Metal Gauge	Std Ind Part #	Ribbed Die**	Plain Die**
BF800	\$.35	25	.800"	.844"	.688"	.024"	---	R28	P29~
BF825	.36	25	.825"	.844"	.688"	.024"	---	R27~	P28~
BF850	.33	25	.850"	.568"	.688"	.019"	Z	R26	P27~
BFW875	.41	25	.875"	.844"	.688"	.024"	7244A	R25	P26
BFW900	.41	25	.900"	.844"	.688"	.024"	5029A	R24	P25~
BFW975	.50	25	.975"	.844"	.688"	.024"	5028A	R21	P22
BFW1025	.53	25	1.025"	.844"	.693"	.024"	7114A	R19	P20~
BFW1175	.59	25	1.175"	.844"	.875"	.024"	7088A	R13~	P14~
BFMW1050	.78	25	1.050"	.625"	.750"	.025"	3605	R18~	P19~
BFMW1100	.59	25	1.100"	.843"	.812"	.023"	5027	R16	P17~
BFMW1150	.63	25	1.150"	.844"	.880"	.024"	7104A	R15	P15
BFMW1225	.78	25	1.225"	.875"	.875"	.025"	875-K	R11~	P12
BFMW1275	1.66	25	1.275"	.875"	1.000"	.025"	875-1	R9	P10~
BFMW1400	1.69	25	1.400"	.687"	1.120"	.020"	D	R4~	P5~
BFMW1500	1.01	25	1.500"	.875"	1.120"	.025"	1500	---	P1~

Ribbed Dies per set: \$185.00  
Plain Dies per set: \$185.00

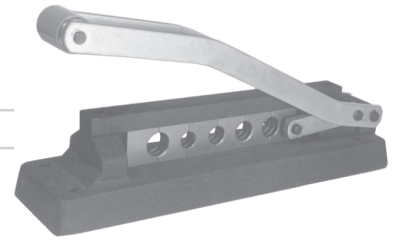
\* Sold in bag quantities only.  
\*\* These dies for use with 5111A and 1765A ferrule machine. Other sizes are available.

## Hose Crimper

- Hose crimper provides "big tool" crimping advantages at a fraction of the cost.
- Rugged, portable and easy to use.

Die Bore	Hose O.D.		Die Part #	Crimper # 855	Crimper # 855A
	From:	To:			
.375"	.385"	.406"	<b>856-10</b>	optional	optional
.437"	.447"	.468"	<b>856-7</b>	optional	standard
.484"	.490"	.520"	<b>856-4</b>	standard	standard
.531"	.540"	.562"	<b>856-3~</b>	standard	standard
.578"	.590"	.625"	<b>856-2</b>	standard	standard
.625"	.640"	.671"	<b>856-1</b>	standard	standard
.687"	.690"	.710"	<b>856-5</b>	standard	optional
.750"	.760"	.781"	<b>856-8</b>	optional	optional
.812"	.820"	.843"	<b>856-9</b>	optional	optional

Part #	Price/E
<b>855</b>	<b>\$229.00</b>
<b>855A</b>	<b>229.00</b>



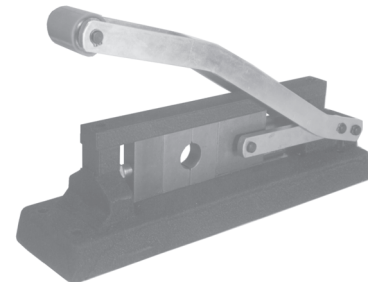
- 855 crimper with 5 dies for 31/64" (0.484") to 45/64" (0.703") OD hose
- 855A crimper with 5 dies for 28/64" (0.437") to 43/64" (0.671") OD hose
- Optional dies up to 52/64" OD
- Replacement dies: **\$33.00**

## Model 860 Large Hose Crimper

(Sold without dies)

- For crimping 1/2" to 1" ID hoses with larger OD's, from 11/16" to 1-1/2".
- Crimps standard brass or aluminum ferrules.
- Order separate dies for each hose diameter.

Hose OD	Die Part #	Price/E	Hose OD	Die Part #	Price/E
11/16"	<b>861-22</b>	<b>\$40.00</b>	1"	<b>861-32</b>	<b>\$40.00</b>
23/32"	<b>861-23</b>	<b>40.00</b>	1-1/32"	<b>861-33</b>	<b>40.00</b>
3/4"	<b>861-24</b>	<b>40.00</b>	1-1/16"	<b>861-34</b>	<b>40.00</b>
25/32"	<b>861-25</b>	<b>40.00</b>	1-1/8"	<b>861-36</b>	<b>40.00</b>
13/16"	<b>861-26</b>	<b>40.00</b>	1-3/16"	<b>861-38</b>	<b>40.00</b>
27/32"	<b>861-27</b>	<b>40.00</b>	1-1/4"	<b>861-40</b>	<b>40.00</b>
7/8"	<b>861-28</b>	<b>40.00</b>	1-5/16"	<b>861-42 ~</b>	<b>40.00</b>
29/32"	<b>861-29</b>	<b>40.00</b>	1-3/8"	<b>861-44</b>	<b>40.00</b>
15/16"	<b>861-30</b>	<b>40.00</b>	1-7/16"	<b>861-46</b>	<b>40.00</b>
31/32"	<b>861-31</b>	<b>40.00</b>	1-1/2"	<b>861-48 ~</b>	<b>40.00</b>



Part #	Price/E
<b>860</b>	<b>\$272.00</b>

## Manually - Operated Brass Ferrule Crimper

- Crimps all brass ferrules shown on previous page.
- Dies for ferrule machines are available in standard sets for all ferrules as tabulated (4 segments to a set).
- Dies are supplied with plain or ribbed crimping surface.
- *Does not include dies.*
- Height - with handle upright 27"
- Base - 8" x 3"
- Body - 7-3/8"
- Weight - 29 lbs.

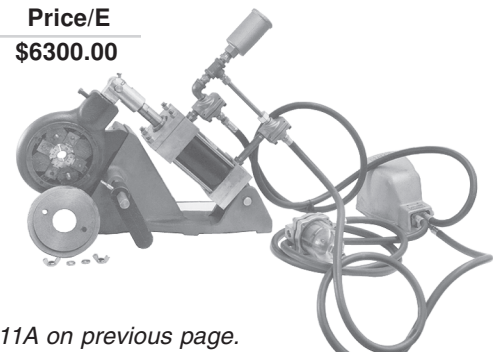
Part #	Price/E
<b>5111A</b>	<b>\$1150.00</b>



## Air - Operated Brass Ferrule Crimper

- The mass production assembly of hose, ferrules and fittings is efficiently handled with this air-operated unit.
- The foot pedal permits the use of both hands, reduces fatigue and speeds production.
- Complete with air cylinder, ferrule machine (less dies), fitted hose lengths and necessary control valves.
- Ready for work bench installation.
- Crimps all brass ferrules shown on previous page.

Part #	Price/E
<b>1765A</b>	<b>\$6300.00</b>



Die sizes for ferrules and machine numbers 1765A and 5111A on previous page.