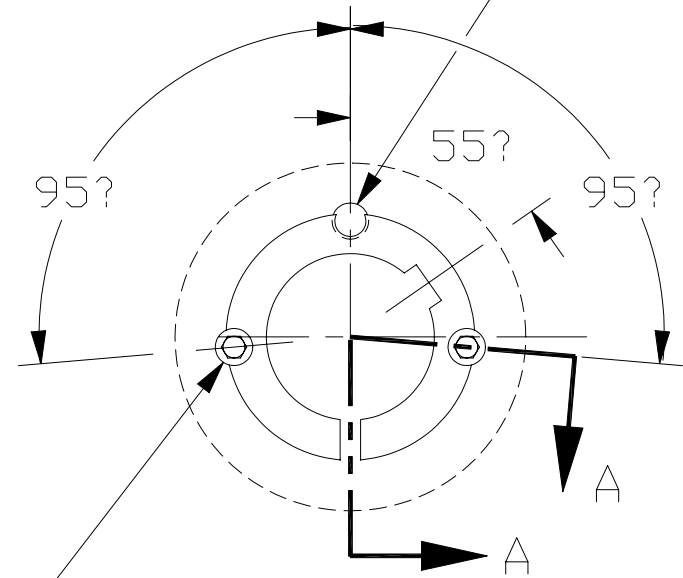
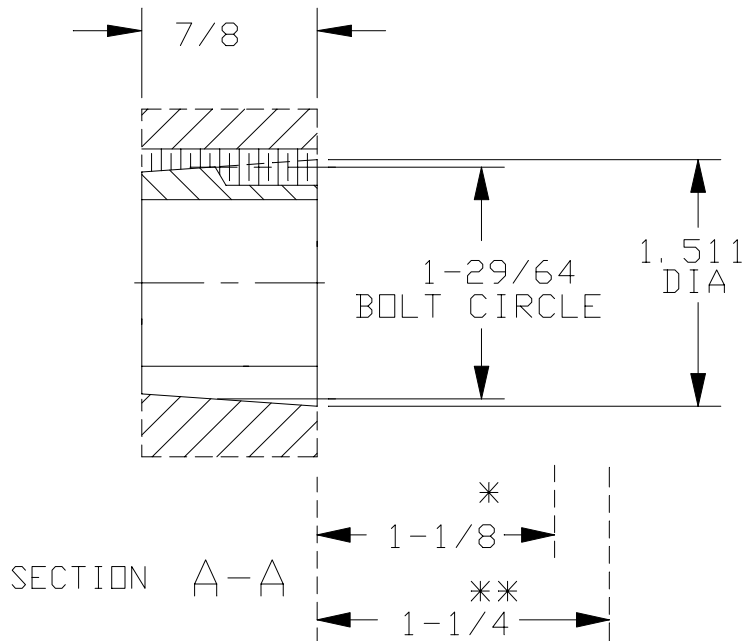


1108 TAPER-LOCK BUSHING

USE ONLY ONE SCREW FOR REMOVING
FROM SHAFT:
BUSHING HALF OF HOLE IS THREADED &
HUB HALF OF HOLE IS NOT THREADED



(2) 1/4-20 NC X 1/2 LG SET SCREWS
FURN W/ BUSH TO TIGHTEN ON SHAFT
(HUB HALF OF HOLE IS THREADED &
BUSH HALF OF HOLE IS NOT THREADED)

BORE:
BUSHING KW:

CERTIFIED

- * SPACE REQD TO TIGHTEN BUSHING
ALSO SPACE REQD TO LOOSEN SCREWS TO
PERMIT REMOVAL OF HUB BY PULLER.
- ** SPACE REQD TO LOOSEN BUSHING USING
ONE SCREW AS JACKSCREW-NO PULLER REQD.

8? INCLUDED ANGLE

CUSTOMER NAME:	APPROVED BY _____	DIST.
CUSTOMER DWG NO. :	DATE _____	
THE GATES RUBBER CO. DENVER, COLORADO	DR. BY _____ DATE _____	DRAWING NO.
	CK. BY _____	
	APPD. BY _____	