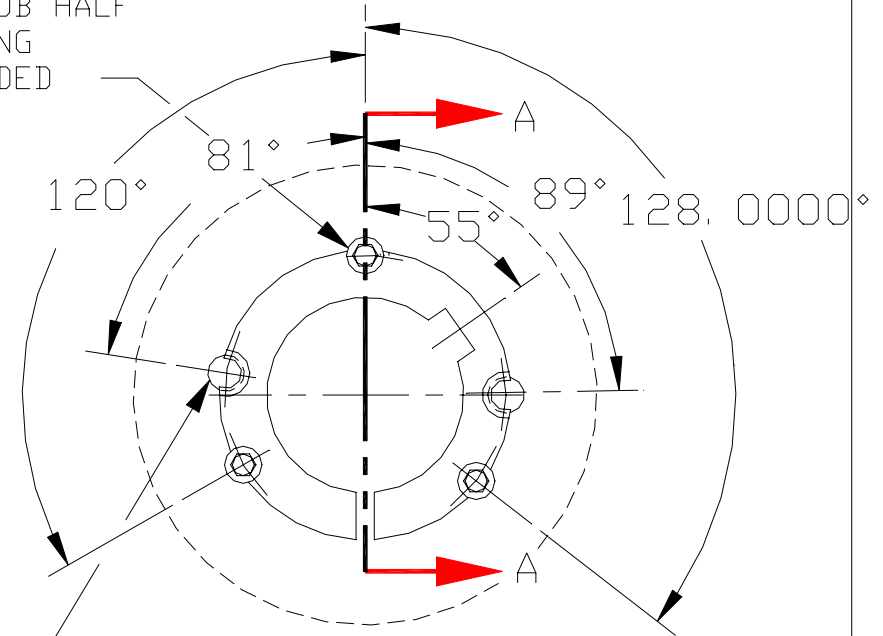
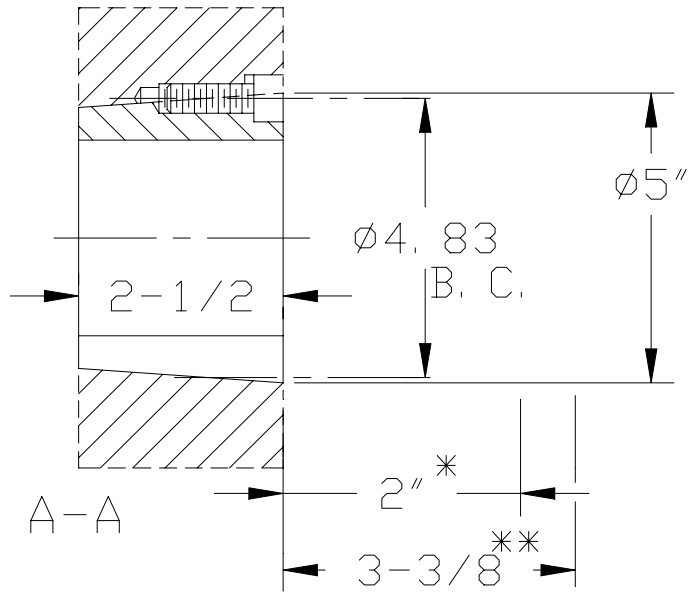


3525 TAPER-LOCK BUSHING

(3) 1/2-13 NC X 1-1/2 LG SOC HD
CAP SCREWS FURNISHED W/ BUSHING
FOR TIGHTENING ON SHAFT; HUB HALF
OF HOLE IS THREADED-BUSHING
HALF OF HOLE IS NOT THREADED




USE ONLY TWO SCREW FOR REMOVING
FROM SHAFT:
BUSHING HALF OF HOLE IS THREADED-
HUB HALF OF HOLE IS NOT THREADED
BORE:
BUSHING KW:

* SPACE REQD TO TIGHTEN BUSHING
ALSO SPACE REQD TO LOOSEN SCREWS TO
PERMIT REMOVAL OF HUB BY PULLER.

** SPACE REQD TO LOOSEN BUSHING USING
TWO SCREW AS JACKSCREW-NO PULLER REQD.

8° INCLUDED ANGLE

CERTIFIED

CUSTOMER NAME:	APPROVED BY _____	DIST.
CUSTOMER DWG NO. :	DATE _____	
 THE GATES RUBBER CO. DENVER, COLORADO	DR. BY _____ DATE _____	DRAWING NO.
	CK. BY _____	
	APPD. BY _____	