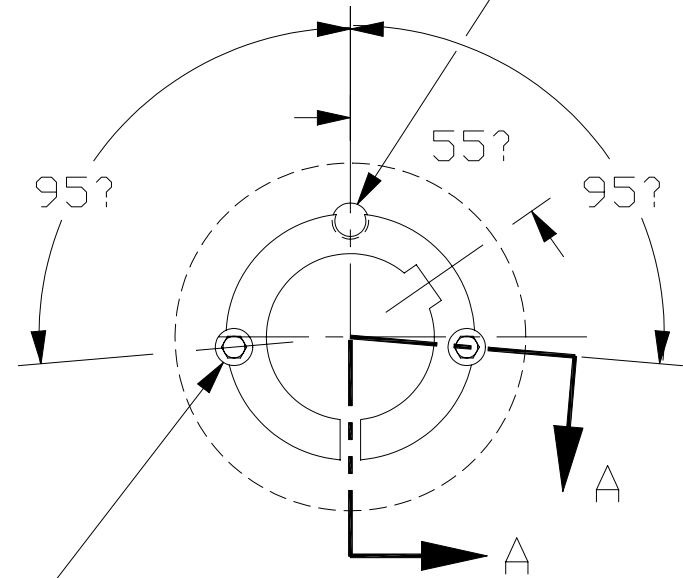
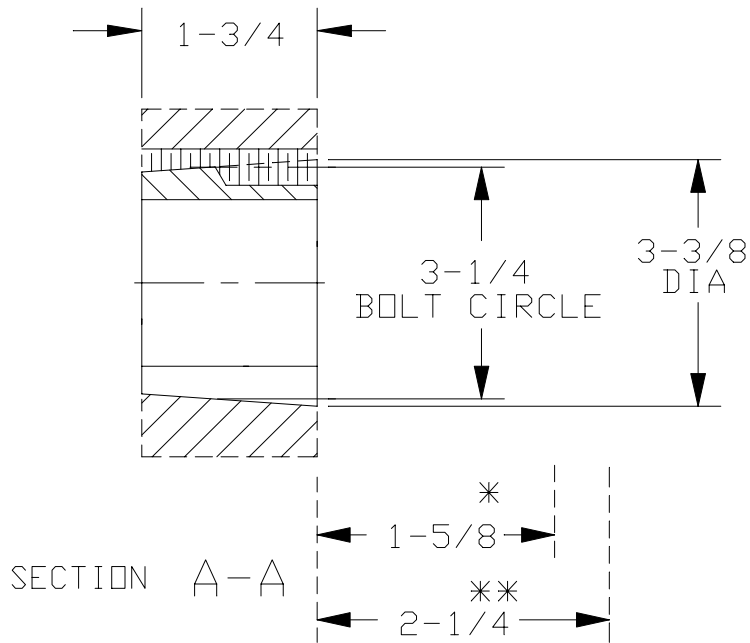


# 2517 TAPER-LOCK BUSHING

USE ONLY ONE SCREW FOR REMOVING  
FROM SHAFT:  
BUSHING HALF OF HOLE IS THREADED &  
HUB HALF OF HOLE IS NOT THREADED



(2) 1/2-13 NC X 1" LG SET SCREWS  
FURN W/ BUSH TO TIGHTEN ON SHAFT  
(HUB HALF OF HOLE IS THREADED &  
BUSH HALF OF HOLE IS NOT THREADED)

BORE:  
BUSHING KW:

- \* SPACE REQD TO TIGHTEN BUSHING  
ALSO SPACE REQD TO LOOSEN SCREWS TO  
PERMIT REMOVAL OF HUB BY PULLER.
- \*\* SPACE REQD TO LOOSEN BUSHING USING  
ONE SCREW AS JACKSCREW-NO PULLER REQD.

8? INCLUDED ANGLE

CERTIFIED

CUSTOMER NAME: CUSTOMER DWG NO.:	APPROVED BY _____ DATE _____	DIST.
THE GATES RUBBER CO. DENVER, COLORADO	DR. BY _____ DATE _____ CK. BY _____ APPD. BY _____	DRAWING NO.