



FLAT IDLER PULLEYS



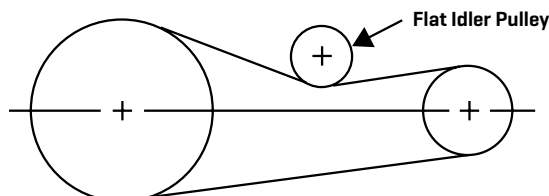
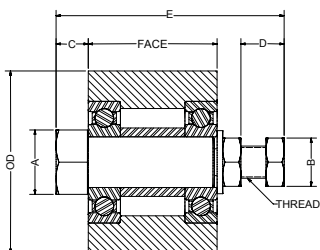
Gates Flat Idler Pulleys are the ideal solution when dealing with drives with a fixed centre distance. Often used when converting fixed centre distance roller chain drives with Poly Chain® GT® Carbon™ belt drives. Idlers can be used to take up extra belt length and provide adjustment for tensioning belt drives. Idler pulleys and sprockets can alter belt paths and clear obstructions.

CONSTRUCTION

Flat idler pulleys contain sealed ball bearings and an integral shaft for mounting to our adjustable idler brackets.

ADVANTAGES

- > A perfect solution for customising belt drives.
- > Lubrication and maintenance are not required.
- > Suitable for a range of synchronous belts and V-belts.



Gates Flat Idler Pulleys can be used with Gates Idler Brackets.

FLAT IDLER PULLEY											
Description	Use with Synch. belt		Use with V-belt	Outside Dia. (mm)	Face Width (mm)	A (mm)	B (mm)	C (mm)	D (mm)	E (mm)	Threads
	Pitch	Width									
4.25X1.25-IDL-FLAT	8mm, L, H	Up to 21mm	1-2 Rib SPZ/XPZ or 3V/3VX, 1 Rib A/AX	107.95	31.75	28.70	28.70	16.26	33.02	95.25	3/4" - 16
4.25X2.00-IDL-FLAT	8mm, L, H	Up to 38mm	3-4 Rib SPZ/XPZ or 3V/3VX, 2 Rib A/AX	107.95	50.80	38.10	28.70	16.00	33.53	114.30	3/4" - 16
4.25X3.00-IDL-FLAT	8mm, L, H	Up to 62mm	5-6 Rib SPZ/XPZ or 3V/3VX, 3 Rib A/AX	107.95	76.20	38.10	28.70	19.05	33.53	143.00	3/4" - 16
4.25X4.00-IDL-FLAT	8mm, L, H	Up to 85mm	8 Rib SPZ/XPZ or 3V/3VX, 4 Rib A/AX	107.95	101.60	38.10	28.70	19.05	33.53	168.40	3/4" - 16
6.50X1.75-IDL-FLAT	14mm	Up to 20mm	1-2 Rib SPA/XPA or 1 Rib B/BX	165.10	44.45	50.80	38.10	26.42	49.78	144.53	1" - 14
6.50X2.75-IDL-FLAT	14mm	Up to 55mm	3-4 Rib SPA/XPA or 2-3 Rib B/BX	165.10	69.85	50.80	38.10	3.30	53.34	144.53	1" - 14
6.50X4.25-IDL-FLAT	14mm	Up to 90mm	5-6 Rib SPA/XPA or 4-5 Rib B/BX	165.10	107.95	60.45	38.10	3.30	50.29	179.32	1" - 14
6.50X5.75-IDL-FLAT	14mm	Up to 125mm	7-8 Rib SPA/XPA or 7-8 Rib B/BX	165.10	146.05	60.45	38.10	25.15	50.29	236.47	1" - 14
6.50X7.50-IDL-FLAT	14mm	Up to 170mm	8 Rib B/BX	165.10	190.50	60.45	38.10	25.40	50.29	284.23	1" - 14

FLAT PULLEYS FOR POLY CHAIN® GT® CARBON™, POWERGRIP® AND V-BELTS									
Part No.	Product No.	Size	Weight (kg)	Bearing Number	Bearing Jamb Nut Torque (Nm)*	Install Jamb Nut Torque (Nm)	Max Speed (rpm)	Use with Idler Bracket	
4.25x1.25-IDL-FLAT	7723-4125	4.25" x 1.25"	2.36	6304	13.6 ±1	54	5800	10-IDL-BRAK	
4.25x2.00-IDL-FLAT	7723-4200	4.25" x 2.00"	3.41	6306	13.6 ±1	54	5800		
4.25x3.00-IDL-FLAT	7723-4300	4.25" x 3.00"	4.82	6306	13.6 ±1	54	5800		
4.25x4.00-IDL-FLAT	7723-4400	4.25" x 4.00"	6.18	6306	13.6 ±1	54	5800		
6.50x1.75-IDL-FLAT	7723-6175	6.50" x 1.75"	7.77	6308	20.3 ±2	68	3800	20-IDL-BRAK	
6.50x2.75-IDL-FLAT	7723-6275	6.50" x 2.75"	10.45	6308	20.3 ±2	68	3800		
6.50x4.25-IDL-FLAT	7723-6425	6.50" x 4.25"	15.00	6310	20.3 ±2	68	3800		
6.50x5.75-IDL-FLAT	7723-6575	6.50" x 5.75"	20.45	6310	20.3 ±2	68	3800		
6.50x7.50-IDL-FLAT	7723-6750	6.50" x 7.50"	25.91	6310	20.3 ±2	68	3800		

Flat Idler Pulleys

Flat idler pulleys are fully compatible with the adjustable idler brackets. Pulley diameters and widths were selected for use with as many different belt types as possible. Flat idler pulleys can be used with both synchronous and V-belts of appropriate belt sections. While they are intended to run against the backside of belts, they can also be applied to the inside of appropriate belt sections. The below table shows which flat idler pulleys to use for our different belt types and widths (or number of belts).

Belt Sections	4.25" OD Idler Pulleys				6.50" OD Idler Pulleys				
	4.25 x 1.25	4.25 x 2.00	4.25 x 3.00	4.25 x 4.00	6.50 x 1.75	6.50 x 2.75	6.50 x 4.25	6.50 x 5.75	6.50 x 7.50
POLY CHAIN® GT® CARBON™									
8mm Pitch	8M-12	8M-36	8M-62						
	8M-21								
14mm Pitch					14M-20	14M-37 14M-68	14M-90	14M-125	
POWERGRIP® GT3									
5mm Pitch	5M-15								
	5M-25								
8mm Pitch	8M-20	8M-30	8M-50	8M-85					
14mm Pitch						14M-40 14M-55	14M-85	14M-115	14M-170
POWERGRIP® (CLASSICAL)									
L {3/8"} Pitch	L050	L100							
	L075								
H {1/2"} Pitch	H075	H100 H150	H200	H300					
SUPER HC® (NARROW)									
SPZ, XPZ, 3V, 3VX	1 - 2	3 - 4	5 - 6	8					
SPA, XPA					1 - 2	3 - 4	5 - 6	7 - 8	
HI-POWER® II, TRI-POWER® AND PREDATOR® (CLASSICAL)									
A, AX, AP V-belts	1	2	3	4					
B, BX, BP V-belts					1	2 - 3	4 - 5	6	8