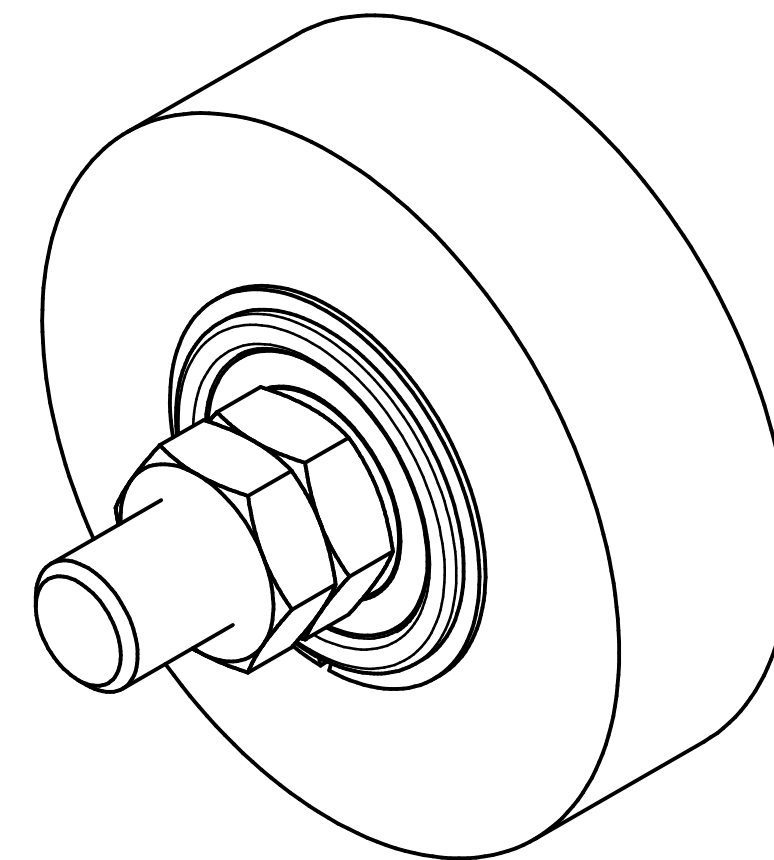
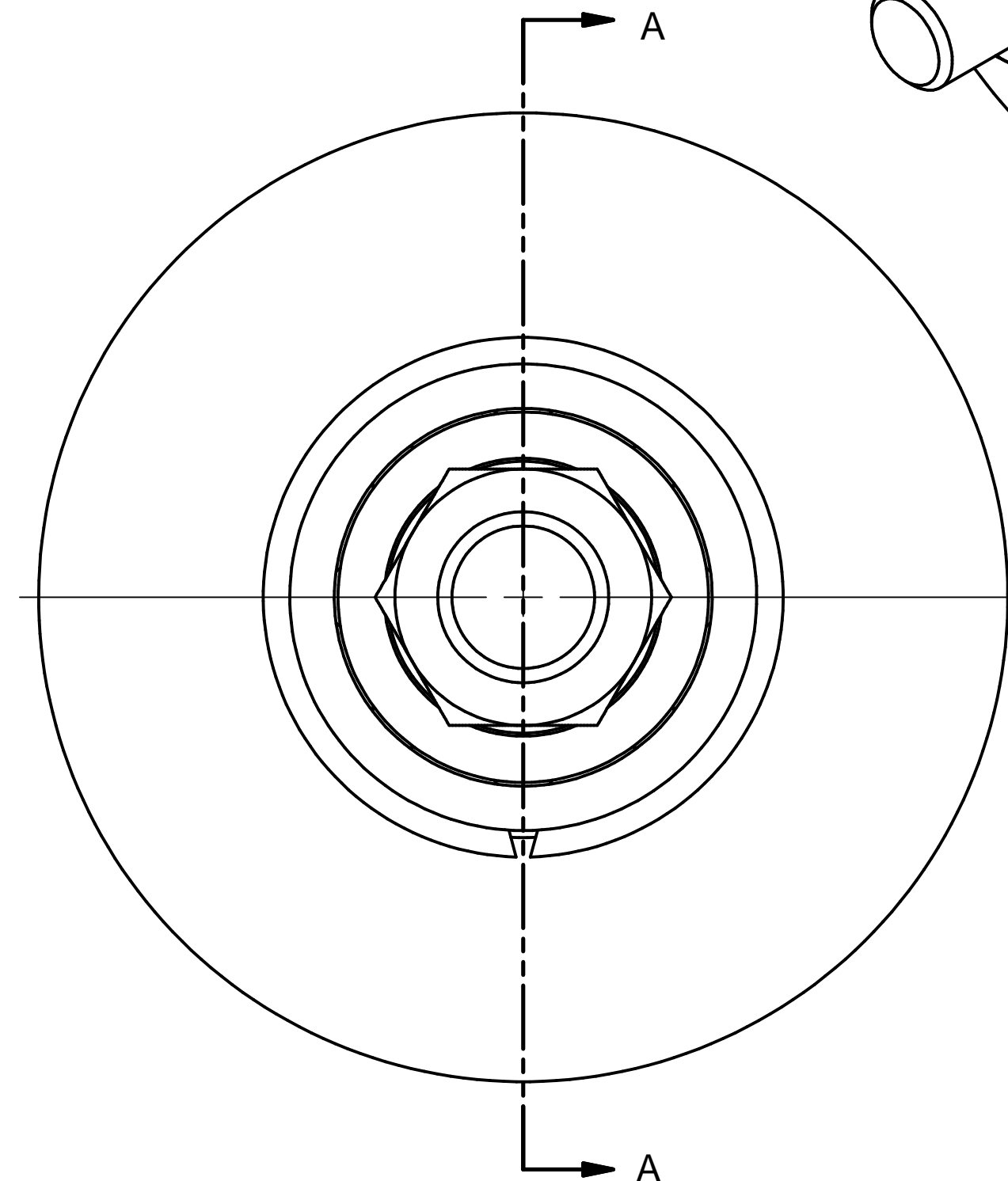


SECTION A-A



CERTIFIED

ALL DIMENSIONS SHOWN ARE IN INCHES

OUTSIDE DIA: 4.25"
FACE WIDTH: 1.25"
MAX RPM: 5840
BEARING: 6304
BRG JAM NUT TQ: 10+/-1 lb-ft
INST JAM NUT TQ: 40 lb-ft
ASSEMBLY WEIGHT: 5.2 lb

THE MATERIALS AND INFORMATION, INCLUDING THE PRINCIPALS OF DESIGN PRESENTED, ARE THE EXCLUSIVE PROPERTY OF THE GATES CORPORATION AND ARE TO BE CONSIDERED AS CONFIDENTIAL INFORMATION. ACCORDINGLY, THIS INFORMATION IS SUBMITTED TO YOU WITH THE AGREEMENT THAT IT IS NOT TO BE REPRODUCED, COPIED, OR LOANED, IN PART OR IN WHOLE, NOR IS THE INFORMATION TO BE RELAYED TO ANY OTHER INDIVIDUAL OR COMPANY. ACCEPTANCE OF THIS DRAWING WILL BE CONSTRUED AS AN AGREEMENT TO THE ABOVE.

THIS DRAWING IS A STOCK POWER TRANSMISSION COMPONENT. DETAILS SHOWN WHICH DO NOT AFFECT DRIVE FUNCTION MAY BE CHANGED WITHOUT ANY NOTIFICATION.



GATES CORPORATION
DENVER, COLORADO

GATES PART NUMBER: 4.25x1.25-IDL

GATES PRODUCT NUMBER: 77234125

DRAWING NO.

77234125