

VF Series Vaporgard™ Fluorescent Luminaires

Cl. I, Div. 2, Groups A, B, C, D*
Cl. I, Zone 2 IIC*
Wet Locations
3, 3R

5L

Applications:

VF Series Vaporgard Fluorescent Lighting Luminaires are used:

- Indoors or outdoors in industrial locations where enclosed and gasketed luminaires are required
- Where the energy efficiency and long life of single twin tube compact fluorescent lamps are desired
- Where luminaires may be subject to wet, damp, dirty locations
- Where vibration and rough usage are a problem
- To retrofit existing Vaporgard incandescent luminaires
- In tunnels, building entrances, utility rooms, hallways and similar locations
- With clear or colored globes to illuminate or mark critical locations or processes

Features:

- Compact size and light weight allow adaptation and easy installation in many industrial applications
- Cast copper-free aluminum (less than 0.4 of 1% copper) construction and epoxy powder finish provide excellent resistance to corrosion
- Variety of mounting arrangements to suit any lighting layout – pendant, ceiling, wall bracket, angle stanchion, through feed, box mount
- VFH luminaire components can be installed on existing Vaporgard incandescent components and standard stamped metal boxes
- Fixtures available for use with two compact 9 watt fluorescent lamps
- Dome and 30° angle reflectors made of bright white Krydon® material provide superior reflectivity; will not chip, peel, dent, rust, or corrode (order separately – see pages 1066–1067)
- Glass globes are internally fluted and stippled to reduce glare and provide even light distribution; exteriors are smooth to shed dust
- **All luminaires 120 VAC only!**
- Grounding wire for safety

Certifications and Complies:

- UL Standard: 1598, 844
- CSA Standard: C22.2 No. 137

Standard Materials:

- Bodies and guards – copper-free aluminum (less than 0.4 of 1%)
- Globes – clear or colored, glass or plastic
- Reflectors – Krydon fiberglass-reinforced polyester material



Standard Finishes:

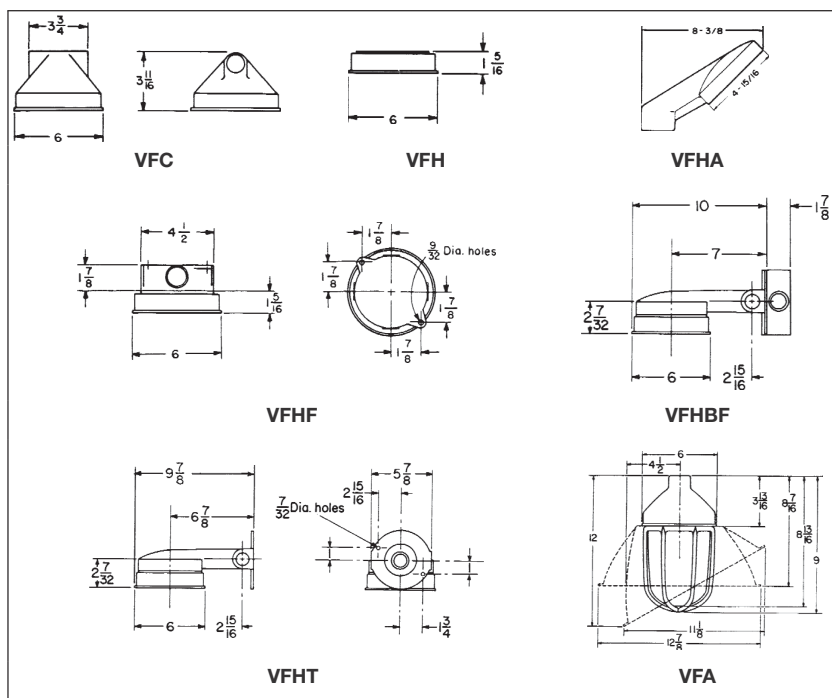
- Copper-free aluminum – powder epoxy finish
- Krydon material – high reflectance white

Electrical Ratings:

- Input voltage – 120 VAC, 60 hertz
- Wattages: two 9 watt lamps

Dimensions

In Inches:



*All mountings except stanchion.

Accessories:

- See next page for complete listing

Luminaire Net Weights:

Fixture Type	1-Lamp Luminaire With Globe & Guard (lbs.)	2-Lamp Luminaire With Globe & Guard (lbs.)
VFA	4 3/4	5
VFHF	5	5 1/4
VFHBF	7 1/4	7 1/2

Type	Lbs.	Type	Lbs.
------	------	------	------

Add for Reflectors:

Dome	1	30° Angle	1
Deduct:	1/2 lb. for P21 Guard		

Temperature Performance Data:








Lamp	Class I, Div. 2	Max. Ambient	Supply Wire °C	Minimum Operating
9W	T3B	40°C	75°C	-4°C (25°F)

5L

VF Series Vaporgard™ Fluorescent Luminaires

Cl. I, Div. 2, Groups A, B, C, D†
Cl. I, Zone 2 IIC†
Wet Locations
NEMA 3, 3R

Twin Tube Fluorescent with G24 Clear Glass Globe and P21 Guard (lamps not included)

								
		Pendant Mount	Ceiling Mount	Wall Mount (w/Box)	Wall Mount (No Box)	Angle Stanchion	Through Feed Mount	Box Mount & Retrofit
Luminaire Watts	Hub Size (In.)	Pendant Mount Cat. #	Ceiling Mount Cat. #	Wall Mount (w/Box) Cat. #	Wall Mount (No Box) Cat. #	Angle Stanchion Mount* Cat. #	Through Feed Mount Cat. #	Box Mount & Retrofit Cat. #
2 Lamps, 9W Each	1/2	VFA122GP	VFHF122GP	VFHBF122GP	VFHT122GP		VFC122GP	VFH122GP
	3/4	VFA222GP	VFHF222GP	VFHBF222GP	VFHT222GP		VFC222GP	
	1	VFA322GP						
	1 1/4					VFHA422GP		

VF Series with Colored Glass Globes or Plastic Globes

To obtain:

- Substitute appropriate globe designation for "G" in above Cat. Nos.

Accessories and Components

Reflectors



Type	Cat. #
Dome (Cannot be used with wall mount luminaires)	RD71
30° Angle	RA71

Globes



Guards



Globe Color	Glass Cat. #	Plastic Cat. #*	Guard	Guard Cat. #
Clear	G24	G63	For use with glass globes only	P21
Green	G25	G65		
Blue	G26			
Red	G27	G67		
Amber	G28			

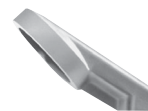
Junction Boxes and Bracket Bodies



VXF – 4 Hubs, 3 Plugs



VXT – 3 Hubs, 2 Plugs



VXA – Stanchion Mount
(Non-hazardous Locations)

VXF – 4 Hubs, 3 Plugs Hub Size (In.)	Cat. #	VXT – 3 Hubs, 2 Plugs Hub Size (In.)	Cat. #	VXA – Stanchion Mount (Non-hazardous Locations) Hub Size (In.)	Cat. #
1/2	VXF10	1/2	VXT10	1 1/4	VXA4
3/4	VXF20	3/4	VXT20		



VXFT – 5 Hubs, 4 Plugs



VXT-K1

VXFT – 5 Hubs, 4 Plugs Hub Size (In.)	Cat. #	Mounting Adapter Kit Description	Cat. #
1/2	VXFT10	Allows for the mounting of non-Eaton's Crouse-Hinds outlet boxes to the VXT20 wall mount bracket and VXH ceiling mount bracket	VXT K1
3/4	VXFT20		

*For non-hazardous locations.
†All mountings except stanchion.

Crouse-Hinds
by **E.T.N**

VF Series Vaporgard™ Fluorescent Luminaires

Family Tree

5L

