

Baldor•Reliance gearmotors are designed and built to withstand rugged industrial applications with precision matched motor and gear ratios for optimized performance, ensuring adequate power and torque are provided for the application. Each gearmotor is factory filled with synthetic oil, and lubricated for life for maximum efficiency and reduced maintenance.



Key Features:

- Industry standard dimensions for fast and easy installation
- Non-vented gear housings prevents lubrication contamination and allows for flexible mounting
- Designed for low maintenance and a long service life
- Engineered for optimal torque transmission and performance

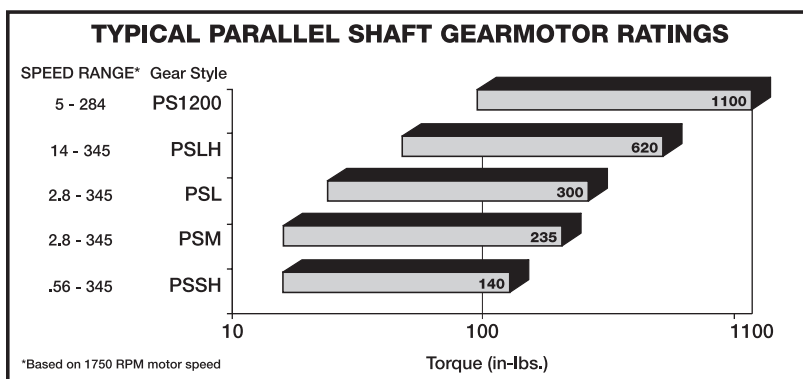
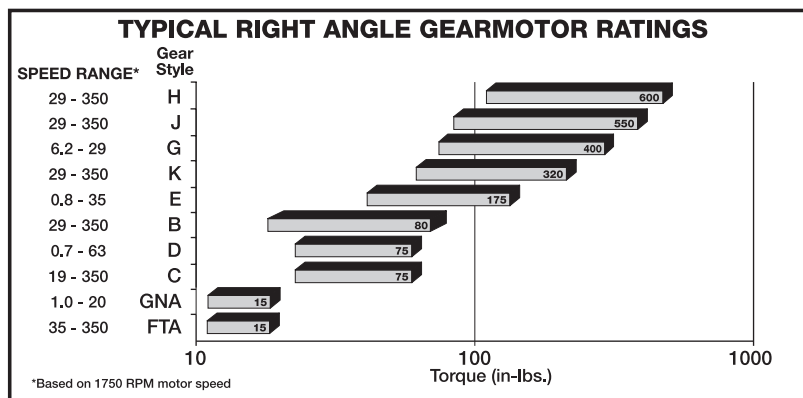
Applications:

- Material handling equipment
- Packaging machinery
- Medical and laboratory equipment
- Auger drive
- Farm equipment
- Printing presses
- Machine tool

1/4 - 250 Horsepower

Gearmotors	Electrical Features	
	Parallel Shaft	Right Angle
1.0 Service Factor – Continuous	S	S
Class F insulation	S	S
UL Component Recognized	S	S
Mechanical Features	Induction hardened helical and spur gears	S
	Ball and needle bearing construction	S
	Non-vented gear housings	S
	Food grade lubricant	-
	Internal oil expansion bladder	-
	High strength bronze gearing with precision ground worm	-

S = Standard





Features:

- Compact bronze sleeve bearings for long maintenance free operation
- Bronze gearing with hardened and precision ground worm for smooth torque transmission
- Permanently lubricated with synthetic grease for long service life

Fixed Speed AC

Output RPM 50/60 Hz.	Max. Safe Torque In. lbs.	Input Hp	Ratio:1	OHL (lbs)	Catalog Number	List Price	Mult. Sym.	Ap'x. Shpg. Wgt.	Motor Type & Gear Style	Enclosure	Voltage	Notes (a)	Drawing Number
Single Phase - Permanent Split Capacitor													
59/71	7.5	1/50	24	1.3	GC24003	406	DS	7	2412C-FTA	TENV	115	19	1

Variable Speed AC

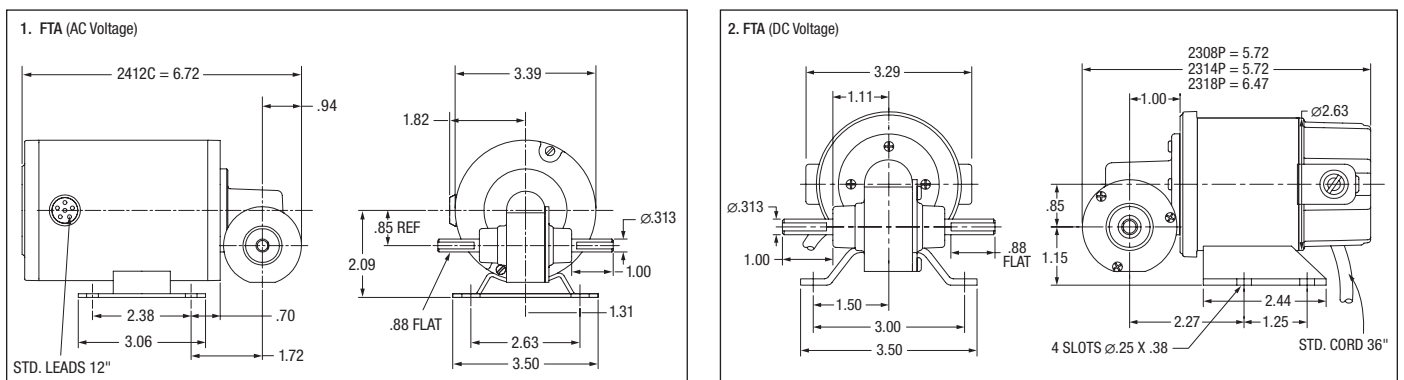
Output RPM 50/60 Hz.	Max. Safe Torque In. lbs.	Speed Range (CT)	Input Hp	Ratio:1	OHL (lbs)	Catalog Number	List Price	Mult. Sym.	Ap'x. Shpg. Wgt.	Motor Type & Gear Style	Voltage	Notes (a)	Drawing Number
Three Phase - Inverter Duty													
85	13	28 - 128	1/25	20	1.3	IDGM2401	505	E2	7	2416M-FTA	230	77	3
170	9	57 - 255	1/25	10	1.3	IDGM2402	505	E2	7	2416M-FTA	230	77	3
340	5	113 - 510	1/25	5	1.3	IDGM2403	505	E2	7	2416M-FTA	230	77	3

Permanent Magnet DC

Output RPM 50/60 Hz.	Max. Safe Torque In. lbs.	Input Hp	Ratio:1	OHL (lbs)	Catalog Number	List Price	Mult. Sym.	Ap'x. Shpg. Wgt.	Motor Type & Gear Style	Voltage D.C. Armature	Voltage	Notes (a)	Drawing Number
90 VDC													
87	7.5	1/50	20	1.3	GP231003	407	DS	5	2308P-FTA	90	0.34		2
140	11	1/25	12	1.3	GP231002	439	DS	5	2314P-FTA	90	0.54		2
312	6	1/17	8	1.3	GP231001	439	DS	5	2314P-FTA	90	0.62		2
344	5.1	1/25	5	1.3	GP232001	439	DS	5	2314P-FTA	90	0.49		2

(a) See notes on inside back flap.

ATTENTION: Additional ratios, voltages, and ratings are available. Application specific modifications are common, such as custom shaft dimensions, addition of brakes or encoders, specific power cords, and washdown features. Contact your local Baldor representative for assistance.



Definite Purpose Motors

Unit Handling Motors

Brake Motors

IEC Frame Motors

50 Hertz Motors

Inverter/Vector Motors & Controls

DC Motors and Controls

Gearmotors and Gear Products

Motor Accessories

Grinders



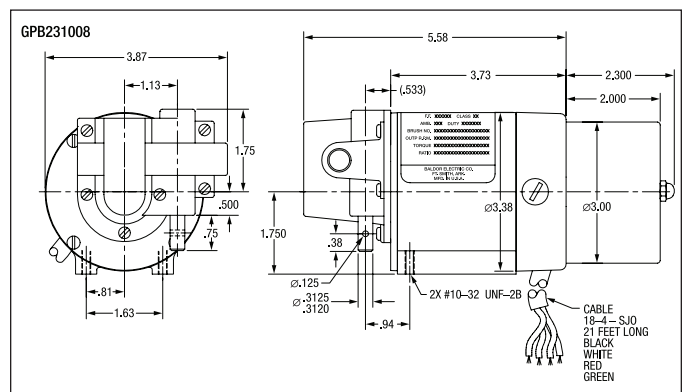
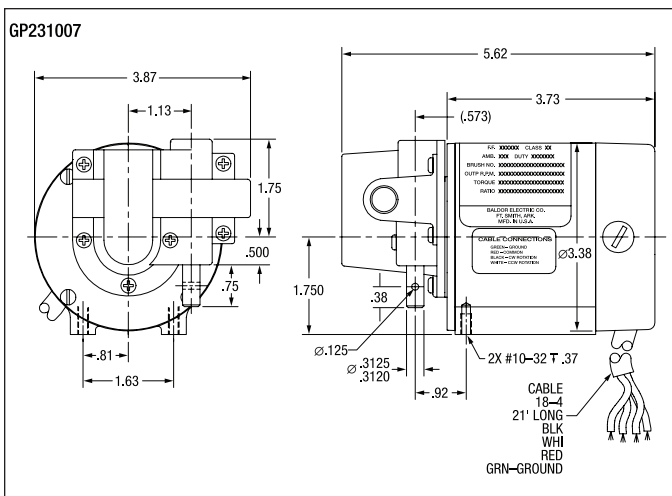
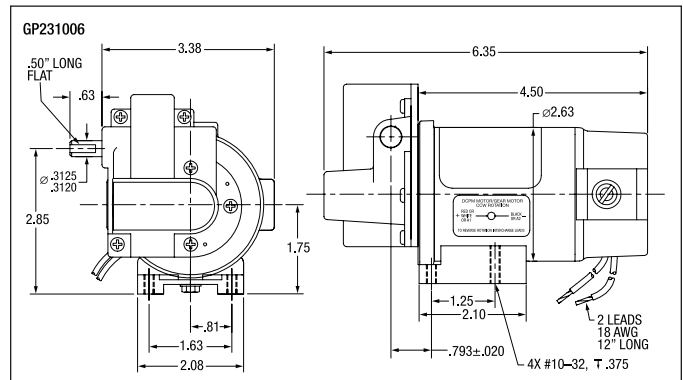
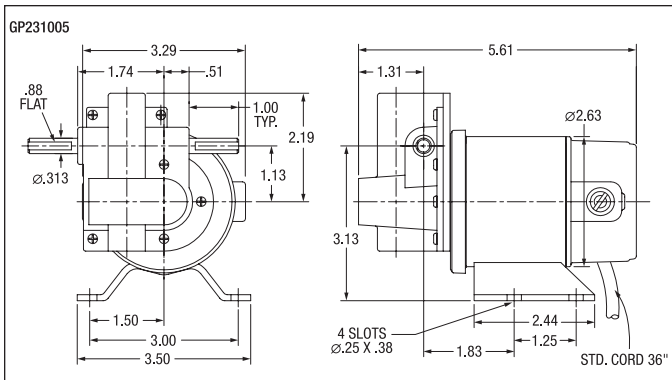
GP231005 Shown
GNA Style

Permanent Magnet DC

Output RPM 50/60 Hz.	Max. Safe Torque In. lbs.	Input Hp	Ratio:1	OHL (lbs)	Catalog Number	List Price	Mult. Sym.	Ap'x. Shpg. Wgt.	Motor Type & Gear Style	Armature Voltage	Full Load Amperage Armature	Notes (a)
90 VDC												
8	15	1/97	225	1.3	GP231005	427	DS	5	2308P-GNA	90	0.19	
115 VDC												
2	15	1/30	1200	1.3	GP231006	438	DS	8	2314P-GNA	115	0.12	
115 VAC Wound Field												
50	10	1/28	132	1.3	GP231007	684	DS	5	2308D-GNA	115	0.92	
115 VAC Wound Field with Brake												
60	10	1/28	132	1.3	GPB231008	722	DS	10	2308D-GNA	115	0.86	

(a) See notes on inside back flap.

ATTENTION: Additional ratios, voltages, and ratings are available. Application specific modifications are common, such as custom shaft dimensions, addition of brakes or encoders, specific power cords, and washdown features. Contact your local Baldor representative for assistance.





GP232004 Shown
DA Style

GC24208 Shown
DB Style

Features:

- Double reduction worm gearing delivers high torque in a compact package
- Internal oil expansion bladder improves seal life and oil retention
- Integral mounting feet for ease of installation
- Bronze gearing with hardened and precision ground worm form smooth torque transmission
- Permanently lubricated with synthetic grease for long service life

Fixed Speed AC

Output RPM 50/60 Hz.	Max. Safe Torque In. lbs.	Input Hp	Ratio:1	OHL (lbs)	Catalog Number ^(a)	List Price	Mult. Sym.	Ap'x. Shpg. Wgt.	Motor Type & Gear Style	Enclosure	Voltage	Notes ^(b)	Drawing Number
Single Phase - Permanent Split Capacitor													
12/14	40	1/40	117	60	GC24208	540	DS	10	2412C-DB	TENV	115	19,78	1

Variable Speed AC

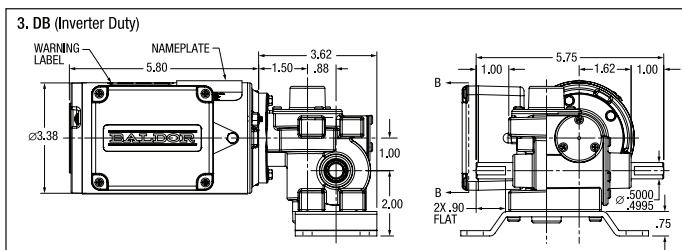
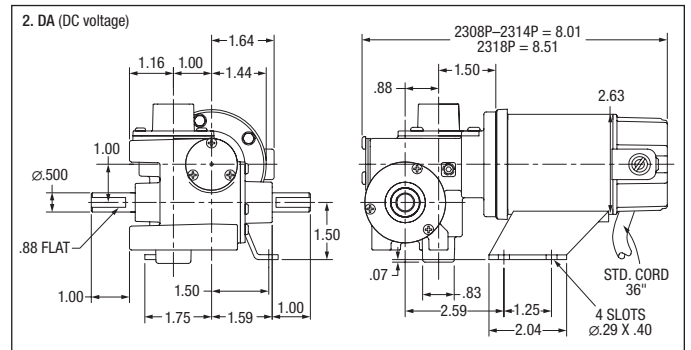
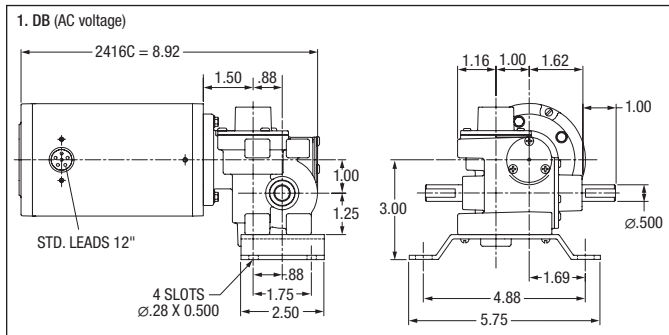
Output RPM 50/60 Hz.	Max. Safe Torque In. lbs.	Speed Range (CT)	Input Hp	Ratio:1	OHL (lbs)	Catalog Number ^(a)	List Price	Mult. Sym.	Ap'x. Shpg. Wgt.	Motor Type & Gear Style	Voltage	Notes ^(b)	Drawing Number
Three Phase - Inverter Duty													
5	75	2 - 8	1/20	310	60	IDGM2301	660	E2	10	2416M-DB	230	77	1
18	75	6 - 27	1/20	90	60	IDGM2302	660	E2	10	2416M-DB	230	77	1

Permanent Magnet DC

Output RPM 50/60 Hz.	Max. Safe Torque In. lbs.	Input Hp	Ratio:1	OHL (lbs)	Catalog Number ^(a)	List Price	Mult. Sym.	Ap'x. Shpg. Wgt.	Motor Type & Gear Style	Voltage D.C. Armature	Voltage	Notes ^(b)	Drawing Number
90 VDC													
2	75	1/66	1100	60	GP232004	606	DS	7	2308P-DA	90	0.18		2
4	75	1/49	660	60	GP232005	606	DS	7	2308P-DA	90	0.34		2
9	66	1/27	310	60	GP232006	606	DS	7	2314P-DA	90	0.44		2
20	64	1/15	130	60	GP232007	632	DS	7	2314P-DA	90	0.68		2
180 VDC													
2	75	1/83	1100	60	GP233020	632	DS	7	2314P-DA	180	.11		2
4	75	1/31	660	60	GP233029	632	DS	7	2314P-DA	180	.20		2
9	66	1/22	310	60	GP233028	632	DS	7	2314P-DA	180	.26		2
20	64	1/20	130	60	GP233027	660	DS	7	2314P-DA	180	.31		2

(a) Vertical motor below gearhead not recommended. Avoiding those positions where the high speed oil seal is immersed in oil, will provide greater security against high speed input seal wear. (b) See notes on inside back flap.

ATTENTION: Additional ratios, voltages, and ratings are available. Application specific modifications are the common, such as custom shaft dimensions, addition of brakes or encoders, specific power cords, and washdown features. Contact your local Baldor representative for assistance.





GC24314 Shown
EB Style

GP7429
Shown

Features:

- Double reduction worm gearing delivers high torque in a compact package
- Internal oil expansion bladder improves seal life and oil retention
- Integral mounting feet for ease of installation
- Bronze gearing with hardened and precision ground worm form smooth torque transmission
- Permanently lubricated with synthetic grease for long service life

Fixed Speed AC

Output RPM 50/60 Hz.	Max. Safe Torque In. lbs.	Input Hp	Ratio:1	OHL (lbs)	Catalog Number ^(a)	List Price	Mult. Sym.	Ap'x. Shpg. Wgt.	Motor Type & Gear Style	Enclosure	Voltage	Notes ^(b)	Drawing Number
Single Phase - Permanent Split Capacitor													
8/9	175	1/13	180	95	GC24314	690	DS	14	2416C-EB	TENV	115	19,78	1
13/16	100	1/20	100	95	GC24312	690	DS	12	2416C-EB	TENV	115	19,78	1
Three Phase													
2	175	1/12	1200	95	GM25021	730	DS	15	2516M-EB	TENV	208/230-460	33	2
11	125	1/12	150	95	GM25016	730	DS	15	2516M-EB	TENV	208/230-460	33	2

Variable Speed AC

Output RPM 50/60 Hz.	Max. Safe Torque In. lbs.	Speed Range (CT)	Input Hp	Ratio:1	OHL (lbs)	Catalog Number ^(a)	List Price	Mult. Sym.	Ap'x. Shpg. Wgt.	Motor Type & Gear Style	Voltage	Notes ^(b)	Drawing Number
Three Phase - Inverter Duty													
9	175	3 - 14	1/12	180	95	IDGM2512	840	E2	15	2512M-EB	230	77	2
17	125	6 - 25	1/12	100	95	IDGM2511	840	E2	15	2512M-EB	230	77	2

Permanent Magnet DC

Output RPM 50/60 Hz.	Max. Safe Torque In. lbs.	Input Hp	Ratio:1	OHL (lbs)	Catalog Number ^(a)	List Price	Mult. Sym.	Ap'x. Shpg. Wgt.	Motor Type & Gear Style	Voltage D.C. Armature	Voltage	Notes ^(b)	Drawing Number
90 VDC													
6	150	1/8	600	95	GP7304	889	DS	13	2412P-EB	90	1.00		3
20	175	1/4	180	95	GP7409	848	DS	15	2424P-EB	90	2.00		3
180 VDC													
20	175	1/4	180	95	GP7429	875	DS	15	2424P-EB	180	1.00		3

(a) Vertical motor below gearhead not recommended. Avoiding those positions where the high speed oil seal is immersed in oil, will provide greater security against high speed input seal wear.

(b) See notes on inside back flap.

ATTENTION: Additional ratios, voltages, and ratings are available. Application specific modifications are common, such as custom shaft dimensions, addition of brakes or encoders, specific power cords, and washdown features. Contact your local Baldor representative for assistance.

Definite Purpose Motors

Unit Handling Motors

Brake Motors

IEC Frame Motors

50 Hertz Motors

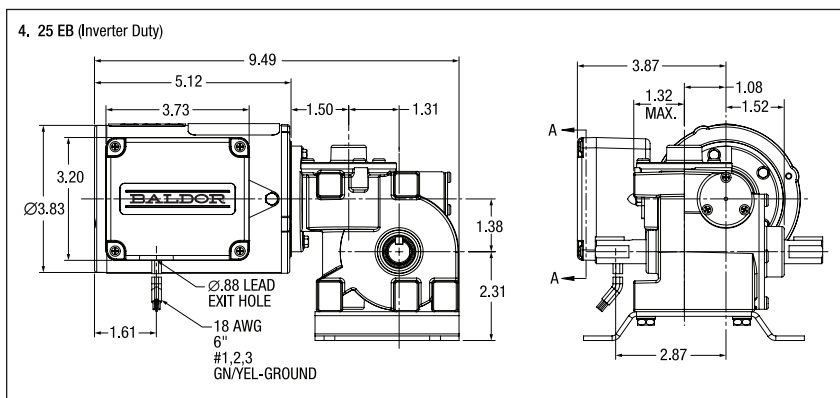
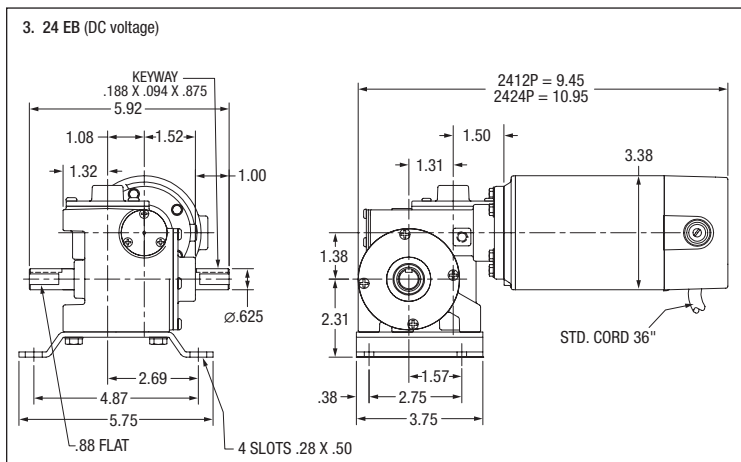
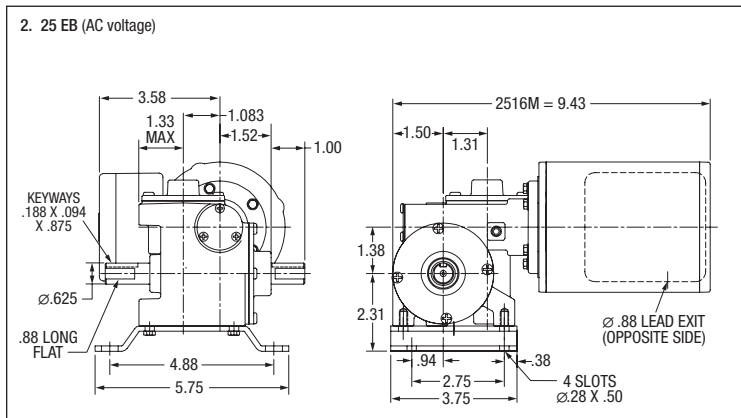
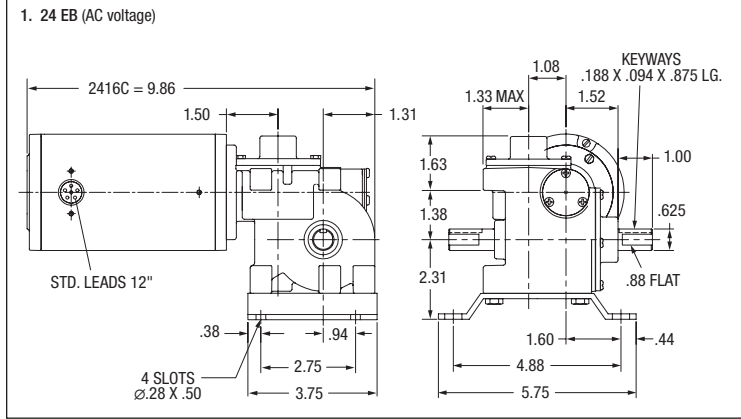
Inverter/Vector Motors & Controls

DC Motors and Controls

Gearmotors and Gear Products

Motor Accessories

Grinders



Definite Purpose Motors

Unit Handling Motors

Brake Motors

IEC Frame Motors

50 Hertz Motors

Inverter/Vector Motors & Controls

DC Motors and Controls

Gearmotors and Gear Products

Motor Accessories

Grinders

Definite Purpose Motors

Unit Handling Motors

Brake Motors

IEC Frame Motors

50 Hertz Motors

Inverter/Vector Motors & Controls

DC Motors and Controls

Gearmotors and Gear Products

Motor Accessories

Grinders



GC24310 Shown
BB Style

GM3329 Shown
BA Style

Features:

- Internal oil expansion bladder improves seal life and oil retention
- Integral mounting feet for ease of installation
- Bronze gearing with hardened and precision ground worm form smooth torque transmission
- Permanently lubricated with synthetic oil for long service life

Fixed Speed AC

Output RPM 50/60 Hz.	Max. Safe Torque In. lbs.	Input Hp	Ratio:1	OHL (lbs)	Catalog Number ^(a)	List Price	Mult. Sym.	Ap'x. Shpg. Wgt.	Motor Type & Gear Style	Enclosure	Voltage	Notes ^(b)	Drawing Number
Single Phase - Permanent Split Capacitor													
23/28	40	1/15	60	40	GC24313	503	DS	10	2418C-BB	TENV	115	19,78	1
35/43	37	1/15	40	40	GC24310	503	DS	10	2418C-BB	TENV	115	19,78	1
46/56	32	1/15	30	30	GC24305	503	DS	10	2418C-BB	TENV	115	19,78	1
70/85	29	1/15	20	26	GC24306	503	DS	10	2418C-BB	TENV	115	19,78	1
93/113	24	1/15	15	18	GC24304	503	DS	10	2418C-BB	TENV	115	19,78	1
140/170	18	1/15	10	9	GC24302	503	DS	10	2418C-BB	TENV	115	19,78	1
Three Phase													
95/115	30	1/12	15	18	GM25026	542	DS	12	2516M-BA	TENV	190/380//230/460	19	2
143/174	30	1/8	10	9	GM25024	558	DS	13	2516M-BA	TENV	190/380//230/460	19	3
285/345	15	1/8	5	5	GM25022	558	DS	13	2516M-BA	TENV	190/380//230/460	19	3
230	27	1/6	15	18	GM3329	703	DS	11	2512M-BA	TEFC	208 - 230/460	33	4

Variable Speed AC

Output RPM 50/60 Hz.	Max. Safe Torque In. lbs.	Speed Range (CT)	Input Hp	Ratio:1	OHL (lbs)	Catalog Number ^(a)	List Price	Mult. Sym.	Ap'x. Shpg. Wgt.	Motor Type & Gear Style	Voltage	Notes ^(b)	Drawing Number
Three Phase - Inverter Duty													
29	30	10 - 44	1/15	60	40	IDGM2406	612	E2	13	2512M-BB	230	77	6
85	25	28 - 128	1/15	20	26	IDGM2405	612	E2	13	2512M-BB	230	77	6
340	15	113 - 510	1/8	5	5	IDGM2404	612	E2	13	2520M-BB	230	77	6

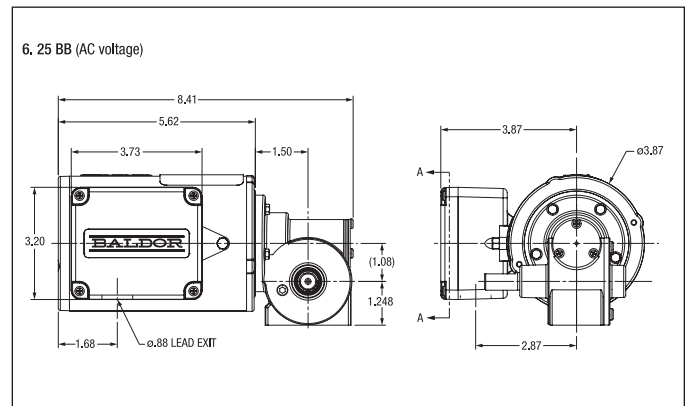
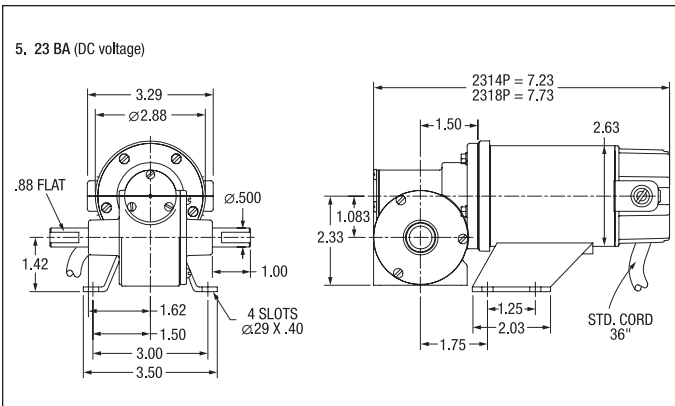
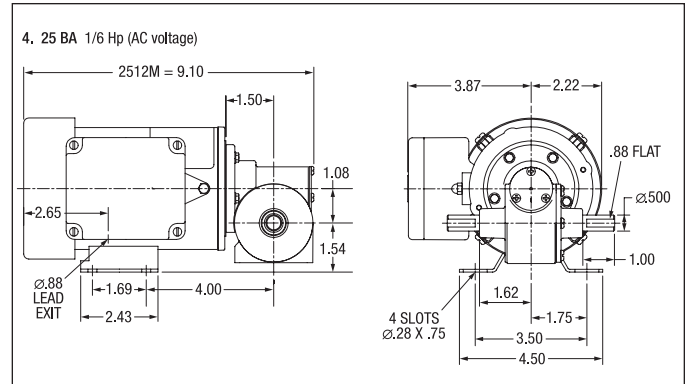
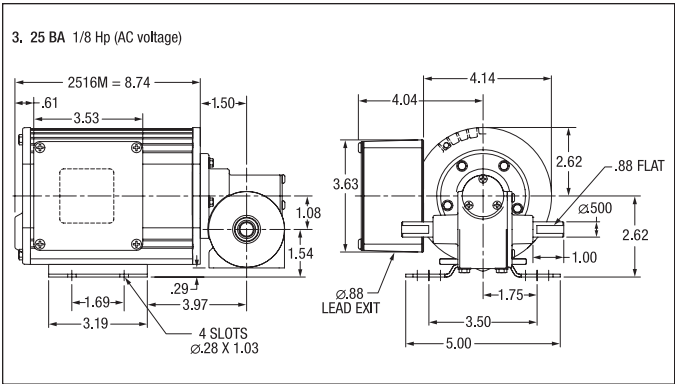
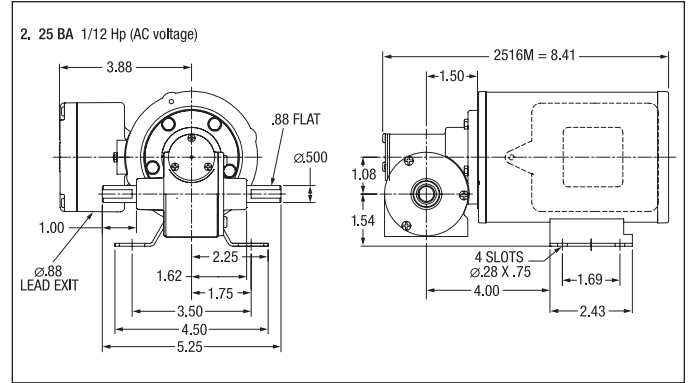
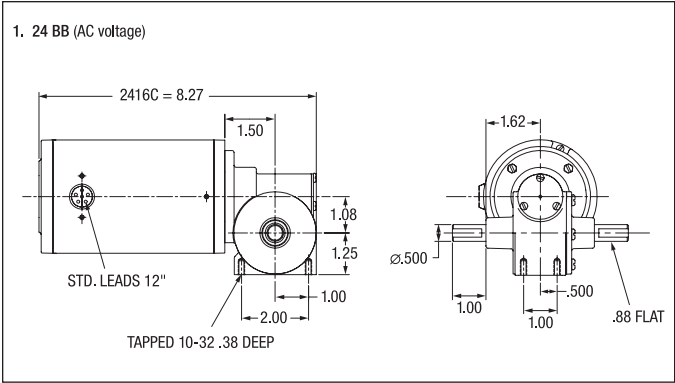
Permanent Magnet DC

Output RPM 50/60 Hz.	Max. Safe Torque In. lbs.	Input Hp	Ratio:1	OHL (lbs)	Catalog Number ^(a)	List Price	Mult. Sym.	Ap'x. Shpg. Wgt.	Motor Type & Gear Style	Voltage D.C. Armature	Voltage	Notes ^(b)	Drawing Number
90 VDC													
40	30	1/22	40	40	GP232002	542	DS	7	2314P-BA	90	0.60		5
60	33	1/16	30	30	GP233003	561	DS	8	2318P-BA	90	0.72		5
90	27	1/16	20	26	GP233002	561	DS	7	2318P-BA	90	0.75		5
120	22	1/16	15	18	GP233007	561	DS	7	2318P-BA	90	0.78		5
173	17	1/16	10	9	GP233001	561	DS	7	2318P-BA	90	0.85		5
180 VDC													
60	33	1/16	30	30	GP233023	561	DS	7	2318P-BA	180	0.42		5
86	28	1/14	20	26	GP233022	561	DS	7	2318P-BA	180	0.42		5
175	17	1/13	10	9	GP233021	561	DS	7	2318P-BA	180	0.42		5

(a) Vertical motor below gearhead not recommended. Avoiding those positions where the high speed oil seal is immersed in oil, will provide greater security against high speed input seal wear.

(b) See notes on inside back flap.

ATTENTION: Additional ratios, voltages, and ratings are available. Application specific modifications are common, such as custom shaft dimensions, addition of brakes or encoders, specific power cords, and washdown features. Contact your local Baldor representative for assistance.



Definite Purpose Motors

Unit Handling Motors

Brake Motors

IEC Frame Motors

50 Hertz Motors

Inverter/Vector Motors & Controls

DC Motors and Controls

Gearmotors and Gear Products

Motor Accessories

Grinders



GP24280
Shown

GC25280 Shown
GC Style

Features:

- Double reduction helical worm delivers high torque in a compact package
- Bronze gearing with hardened and precision ground worm first stage
- High efficiency hardened steel helical second stage
- Permanently lubricated with synthetic oil for long service life
- Industry standard mounting provisions and shafting

Fixed Speed AC

Output RPM 50/60 Hz.	Max. Safe Torque In. lbs.	Input Hp	Ratio:1	OHL (lbs)	Catalog Number ^(a)	List Price	Mult. Sym.	Ap'x. Shpg. Wgt.	Motor Type & Gear Style	Enclosure	Voltage	Notes ^(b)	Drawing Number
Single Phase - Permanent Split Capacitor													
5/6	400	1/6	280	200	GC25280	881	DS	20	2520C-G	TEFC	115	19	1
7/8	385	1/6	190	200	GC25190	881	DS	21	2520C-G	TEFC	115	10,19	1
11/13	300	1/6	120	200	GC25120	881	DS	20	2520C-G	TEFC	115	19	1
17/20	290	1/6	80	200	GC25080	881	DS	15	2520C-G	TEFC	115	19	1
23/27	220	1/6	60	200	GC25060	881	DS	20	2520C-G	TEFC	115	19	1
Three Phase													
5/6	400	1/6	280	200	GM25280	959	DS	12	2516M-G	TEFC	190/380//230/460	19	1
7/9	385	1/6	190	200	GM25190	959	DS	20	2516M-G	TEFC	190/380//230/460	19	1
11/14	375	1/6	120	200	GM25120	959	DS	10	2516M-G	TEFC	190/380//230/460	19	1
17/20	310	1/6	80	200	GM25080	959	DS	20	2516M-G	TEFC	190/380//230/460	19	1
23/28	250	1/6	60	200	GM25060	959	DS	20	2516M-G	TEFC	190/380//230/460	19	1

Variable Speed AC

Output RPM 50/60 Hz.	Max. Safe Torque In. lbs.	Speed Range (CT)	Input Hp	Ratio:1	OHL (lbs)	Catalog Number ^(a)	List Price	Mult. Sym.	Ap'x. Shpg. Wgt.	Motor Type & Gear Style	Voltage	Notes ^(b)	Drawing Number
Three Phase - Inverter Duty													
6	400	2 - 9	1/8	280	200	IDGM2515	1036	E2	20	2516M-G	230	77	1
14	375	5 - 21	1/6	120	200	IDGM2514	1036	E2	20	2516M-G	230	77	1
28	250	9 - 42	1/6	60	200	IDGM2513	1036	E2	20	2516M-G	230	77	1

Permanent Magnet DC

Output RPM 50/60 Hz.	Max. Safe Torque In. lbs.	Input Hp	Ratio:1	OHL (lbs)	Catalog Number ^(a)	List Price	Mult. Sym.	Ap'x. Shpg. Wgt.	Motor Type & Gear Style	Voltage D.C. Armature	Voltage	Notes ^(b)	Drawing Number
90 VDC													
6	400	1/8	280	200	GP24280	965	DS	16	2424P-G	90	1.80		2
9	385	1/8	190	200	GP24190	965	DS	16	2424P-G	90	1.80		2
14	280	1/8	120	200	GP24120	965	DS	16	2424P-G	90	1.80		2
29	163	1/8	60		GP24060	965	DS	16	2424P-G	90	1.80		2

(a) Vertical motor below gearhead not recommended.

Avoiding those positions where the high speed oil seal is immersed in oil, will provide greater security against high speed input seal wear.

(b) See notes on inside back flap.

ATTENTION: Additional ratios, voltages, and ratings are available. Application specific modifications are common, such as custom shaft dimensions, addition of brakes or encoders, specific power cords, and washdown features. Contact your local Baldor representative for assistance.

Definite Purpose
Motors

Unit Handling
Motors

Brake Motors

IEC Frame
Motors

50 Hertz
Motors

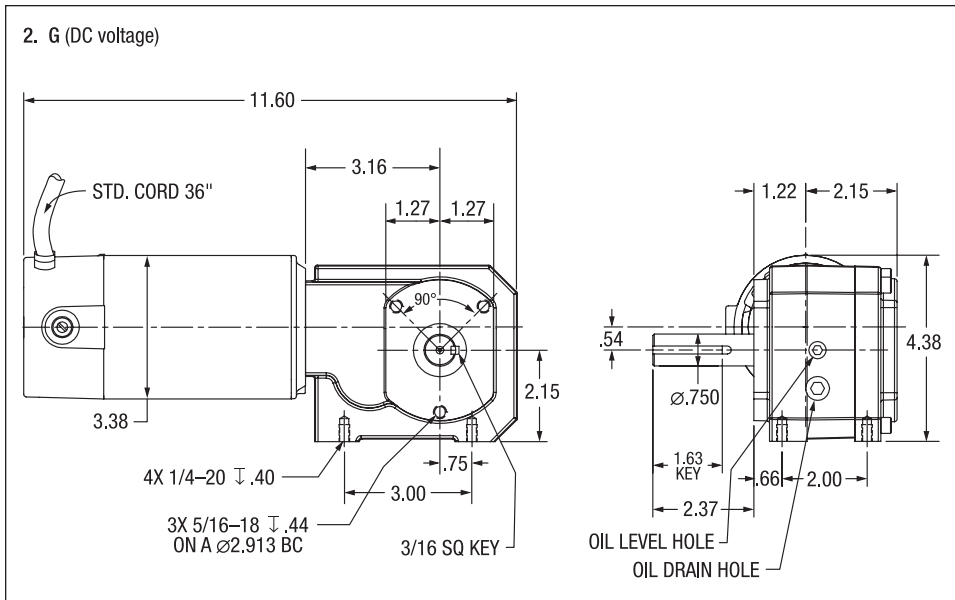
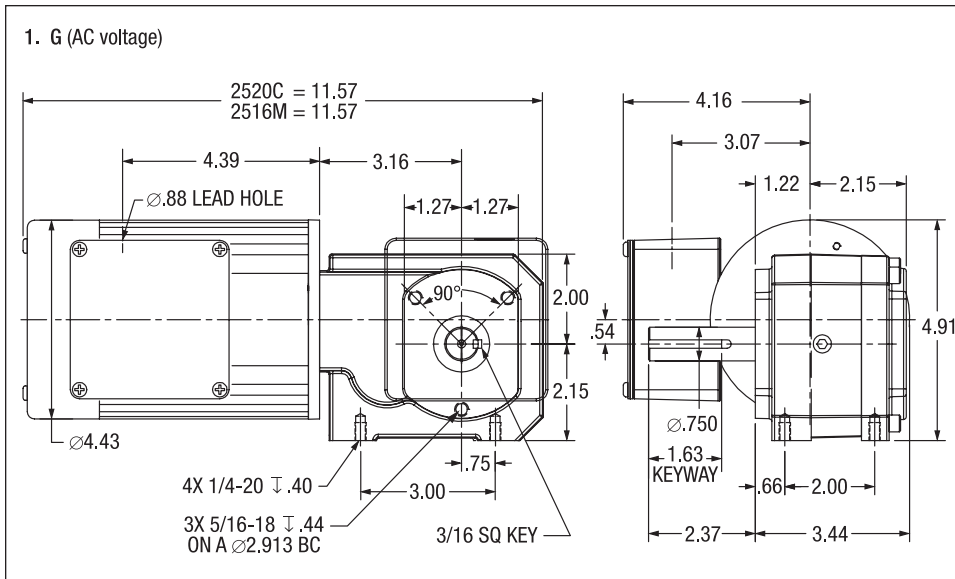
Inverter/Vector
Motors & Controls

DC Motors
and Controls

Gearmotors and
Gear Products

Motor
Accessories

Grinders



Definite Purpose Motors

Unit Handling Motors

Brake Motors

IEC Frame Motors

50 Hertz Motors

Inverter/Vector Motors & Controls

DC Motors and Controls

Gearmotors and Gear Products

Motor Accessories

Grinders



Features:

- Internal oil expansion bladder improves seal life and oil retention
- Integral mounting feet with industry standard dimensions for ease of installation
- Bronze gearing with hardened and ground worm for smooth torque transmission
- Permanently lubricated with synthetic oil for long service life

Fixed Speed AC

Output RPM 50/60 Hz.	Max. Safe Torque In. lbs.	Input Hp	Ratio:1	OHL (lbs)	Catalog Number ^(a)	List Price	Mult. Sym.	Ap'x. Shpg. Wgt.	Motor Type & Gear Style	Enclosure	Voltage	Notes ^(b)	Drawing Number
Single Phase - Permanent Split Capacitor													
23/28	45	1/15	60	120	GC24307	537	DS	11	2416C-KA	TEFC	110/115	19	1
35/42	49	1/15	40	120	GC24308	537	DS	11	2416C-KA	TEFC	110/115	10,19	1
34/41	90	1/8	40	120	GC25004	635	DS	16	2520C-KA	TEFC	110/115	19	2
33/41	130	1/6	40	120	GC3320	701	DS	15	2524C-K	TEFC	110/115	19	3
46/55	78	1/8	30	120	GC25006	635	DS	16	2520C-KA	TEFC	110/115	10,19	2
68/83	32	1/15	20	120	GC24309	537	DS	11	2416C-KA	TEFC	110/115	10,19	1
69/82	57	1/8	20	120	GC25007	635	DS	16	2520C-KA	TEFC	110/115	19	2
67/82	75	1/6	20	120	GC3321	701	DS	15	2524C-K	TEFC	110/115	19	3
135/165	18	1/15	10	120	GC24311	537	DS	11	2416C-KA	TEFC	110/115	10,19	1
130/160	33	1/8	10	120	GC25008	635	DS	16	2520C-KA	TEFC	110/115	19	2
135/165	43	1/6	10	120	GC3322	701	DS	15	2524C-K	TEFC	110/115	19	3
265/320	23	1/6	5	120	GC3324	701	DS	15	2524C-K	TEFC	110/115	19	3
Single Phase - Split Phase													
36/43	90	1/8	40	120	GC25009	635	DS	17	2420S-KA	TEFC	110/115	19	1
48/57	78	1/8	30	120	GC25011	635	DS	15	2420S-KA	TEFC	110/115	10,19	1
71/86	57	1/8	20	120	GC25012	635	DS	15	2420S-KA	TEFC	110/115	19	1
140/170	33	1/8	10	120	GC25014	635	DS	15	2520S-KA	TEFC	110/115	19	2
Single Phase - Capacitor Start Induction Run													
35/42	130	1/6	40	120	GL3326	701	DS	18	2528L-K	TEFC	110/115	19	4
71/85	75	1/6	20	120	GL3327	701	DS	21	2528L-K	TEFC	110/115	19	4
135/165	43	1/6	10	120	GL3328	701	DS	21	2528L-K	TEFC	110/115	19	4
280/335	23	1/6	5	120	GL3329	701	DS	18	2528L-K	TEFC	110/115	19	4
Three Phase													
35/43	170	1/4	40	120	GM3340	848	DS	16	2524M-K	TEFC	190/380//230/460	19	3
70/85	112	1/4	20	120	GM3345	848	DS	16	2524M-K	TEFC	190/380//230/460	19	3
140/170	72	1/4	10	120	GM3347	848	DS	16	2524M-K	TEFC	190/380//230/460	19	3
279/340	36	1/4	5	120	GM3349	848	DS	16	2524M-K	TEFC	190/380//230/460	19	3

(a) Vertical motor below gearhead not recommended.

Avoiding those positions where the high speed oil seal is immersed in oil, will provide greater security against high speed input seal wear.

(b) See notes on inside back flap.

ATTENTION: Additional ratios, voltages, and ratings are available. Application specific modifications are common, such as custom shaft dimensions, addition of brakes or encoders, specific power cords, and washdown features. Contact your local Baldor representative for assistance.

Definite Purpose Motors

Unit Handling Motors

Brake Motors

IEC Frame Motors

50 Hertz Motors

Inverter/Vector Motors & Controls

DC Motors and Controls

Gearmotors and Gear Products

Motor Accessories

Grinders



Features:

- Internal oil expansion bladder improves seal life and oil retention
- Integral mounting feet with industry standard dimensions for ease of installation
- Bronze gearing with hardened and ground worm for smooth torque transmission
- Permanently lubricated with synthetic oil for long service life

Variable Speed AC

Output RPM 50/60 Hz.	Max. Safe Torque In. lbs.	Speed Range (CT)	Input Hp	Ratio:1	OHL (lbs)	Catalog Number ^(a)	List Price	Mult. Sym.	Ap'x. Shpg. Wgt.	Motor Type & Gear Style	Voltage	Notes ^(b)	Drawing Number
Three Phase - Inverter Duty													
22	315	7 - 33	3/8	75	120	IDGM2509	868	E2	17	2528M-K	230	77	3
28	252	9 - 42	3/8	60	120	IDGM2508	868	E2	17	2528M-K	230	77	3
41	228	14 - 62	3/8	40	120	IDGM2506	868	E2	17	2528M-K	230	77	3
83	138	28 - 125	3/8	20	120	IDGM2503	868	E2	17	2528M-K	230	77	3
165	105	55 - 248	3/8	10	120	IDGM2501	868	E2	17	2528M-K	230	77	3
330	68	110 - 495	3/8	5	120	IDGM2500	868	E2	17	2528M-K	230	77	3

Permanent Magnet DC

Output RPM 50/60 Hz.	Max. Safe Torque In. lbs.	Input Hp	Ratio:1	OHL (lbs)	Catalog Number ^(a)	List Price	Mult. Sym.	Ap'x. Shpg. Wgt.	Motor Type & Gear Style	Voltage D.C. Armature	Voltage	Notes ^(b)	Drawing Number
90 VDC													
43	73	1/12	40	73	GP12511	690	DS	10	2416P-K	90	1.00		5
43	135	1/6	40	135	GP13530	725	DS	13	2428P-K	90	1.73		5
57	111	1/6	30	111	GP13531	725	DS	13	2428P-K	90	1.73		5
86	39	1/12	20	39	GP12512	690	DS	10	2416P-K	90	1.00		5
88	88	1/6	20	88	GP13532	725	DS	13	2428P-K	90	1.73		5
173	22	1/12	10	22	GP12514	690	DS	10	2416P-K	90	0.90		5
173	48	1/6	10	48	GP13533	725	DS	13	2428P-K	90	1.73		5
346	10	1/12	5	10	GP12516	690	DS	10	2416P-K	90	0.90		5
346	24	1/6	5	24	GP13536	725	DS	13	2428P-K	90	1.73		5

^(a) Vertical motor below gearhead not recommended.

Avoiding those positions where the high speed oil seal is immersed in oil, will provide greater security against high speed input seal wear.

^(b) See notes on inside back flap.

ATTENTION: Additional ratios, voltages, and ratings are available. Application specific modifications are common, such as custom shaft dimensions, addition of brakes or encoders, specific power cords, and washdown features. Contact your local Baldor representative for assistance.

Definite Purpose
Motors

Unit Handling
Motors

Brake Motors

IEC Frame
Motors

50 Hertz
Motors

Inverter/Vector
Motors & Controls

DC Motors
and Controls

Gearmotors and
Gear Products

Motor
Accessories

Grinders

Definite Purpose Motors

Unit Handling Motors

Brake Motors

IEC Frame Motors

50 Hertz Motors

Inverter/Vector Motors & Controls

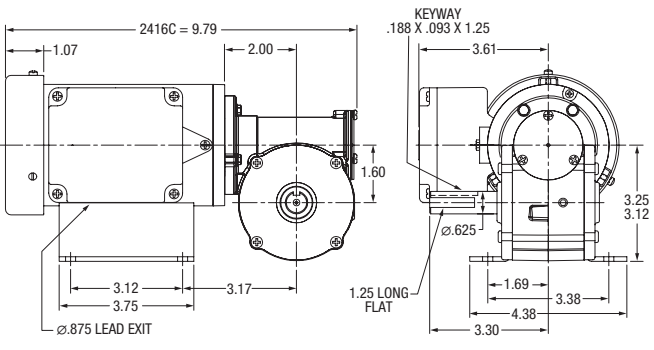
DC Motors and Controls

Gearmotors and Gear Products

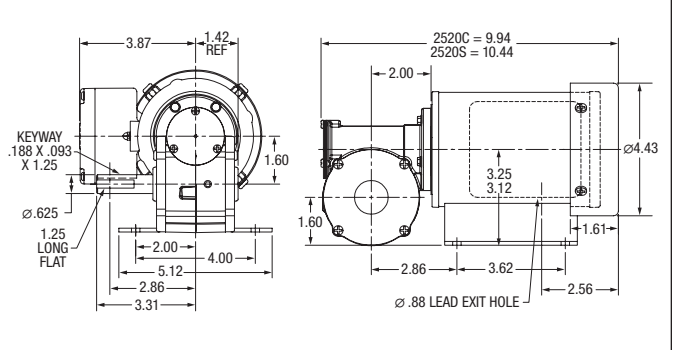
Motor Accessories

Grinders

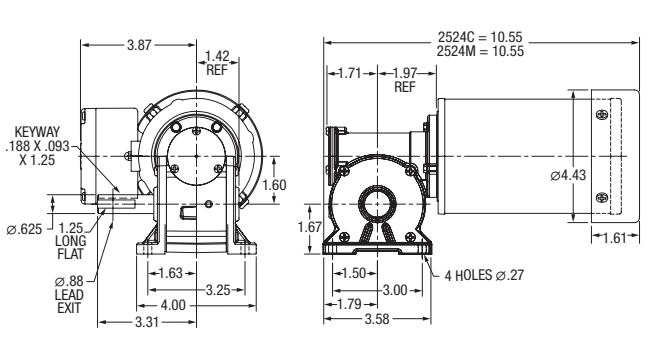
1. 24 KA (AC voltage)



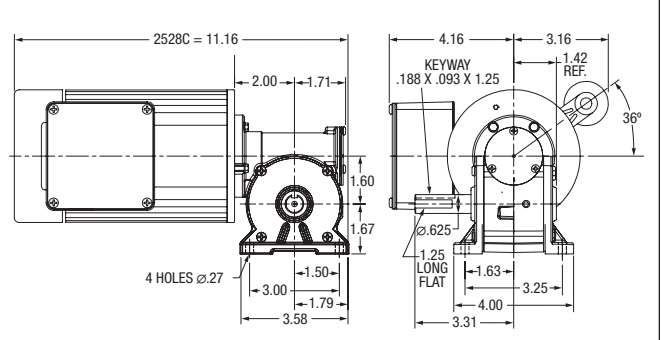
2. 25 KA (AC voltage)



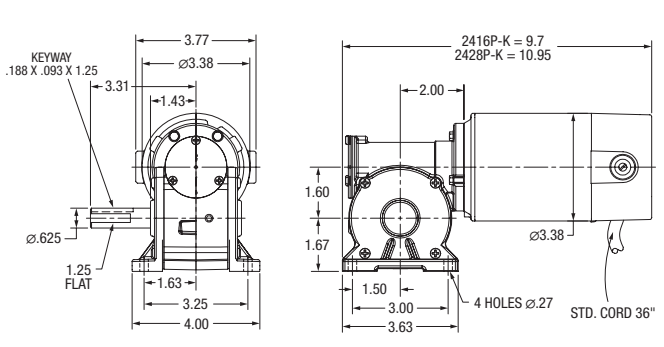
3. 25 K (AC voltage)



4. 25 K (AC voltage)



5. K (DC voltage)





HK Style

Features:

- Internal oil expansion bladder improves seal life and oil retention
- Bronze gearing with hardened and ground worm for smooth torque transmission
- Permanently lubricated with synthetic oil for long service life
- Industry standard 5/8" hollow bore shaft and mounting provisions

Variable Speed AC

Output RPM 50/60 Hz.	Max. Safe Torque In. lbs.	Speed Range (CT)	Input Hp	Ratio:1	Catalog (a) Number	List Price	Mult. Sym.	Ap'x. Shpg. Wgt.	Motor Type & Gear Style	Voltage @ 60 Hz	Notes (b)	Drawing Number
Three Phase - Inverter Duty												
22	315	7 - 33	3/8	75	IDGHM2509	998	E2	19	2528M-HK	230	77	1
28	252	9 - 42	3/8	60	IDGHM2508	998	E2	19	2528M-HK	230	77	1
41	228	14 - 62	3/8	40	IDGHM2506	998	E2	19	2528M-HK	230	77	1
55	195	18 - 83	3/8	30	IDGHM2504	998	E2	19	2528M-HK	230	77	1
83	138	28 - 125	3/8	20	IDGHM2503	998	E2	19	2528M-HK	230	77	1
165	105	55 - 248	3/8	10	IDGHM2501	998	E2	19	2528M-HK	230	77	1
330	68	110 - 495	3/8	5	IDGHM2500	998	E2	19	2528M-HK	230	77	1

Permanent Magnet DC

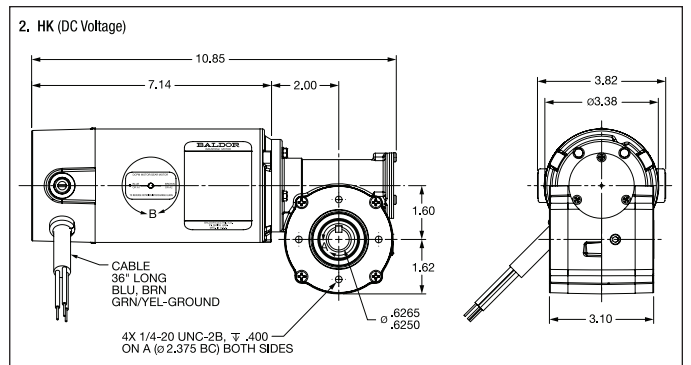
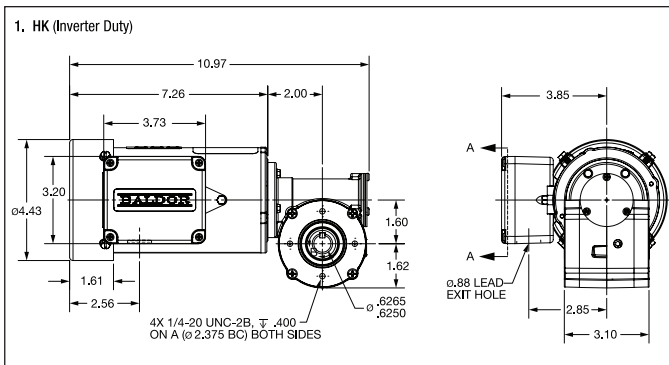
Output RPM 50/60 Hz.	Max. Safe Torque In. lbs.	Input Hp	Ratio:1	Catalog (a) Number	List Price	Mult. Sym.	Ap'x. Shpg. Wgt.	Motor Type & Gear Style	Voltage D.C. Armature	Full Load Amperage Armature	Notes (b)	Drawing Number
90 VDC												
43	135	1/6	40	GHP13530	834	DS	12	2428P-HK	90	1.73		2
57	111	1/6	30	GHP13531	834	DS	12	2428P-HK	90	1.73		2
88	88	1/6	20	GHP13532	834	DS	12	2428P-HK	90	1.73		2
173	48	1/6	10	GHP13533	834	DS	12	2428P-HK	90	1.73		2
346	24	1/6	5	GHP13536	834	DS	12	2428P-HK	90	1.73		2

(a) Vertical motor below gearhead not recommended.

Avoiding those positions where the high speed oil seal is immersed in oil, will provide greater security against high speed input seal wear.

(b) See notes on inside back flap.

ATTENTION: Additional ratios, voltages, and ratings are available. Application specific modifications are common, such as custom shaft dimensions, addition of brakes or encoders, specific power cords, and washdown features. Contact your local Baldor representative for assistance.





Features:

- Internal oil expansion bladder improves seal life and oil retention
- Integral mounting feet for ease of installation
- Bronze gearing with hardened and ground worm for smooth torque transmission
- Permanently lubricated with synthetic oil for long service life

GC24322 Shown
CB Style

GP231004
Shown

Fixed Speed AC

Output RPM 50/60 Hz.	Max. Safe Torque In. lbs.	Input Hp	Ratio:1	OHL (lbs)	Catalog Number ^(a)	List Price	Mult. Sym.	Ap'x. Shpg. Wgt.	Motor Type & Gear Style	Enclosure	Voltage	Notes ^(b)	Drawing Number
Single Phase - Permanent Split Capacitor													
23/28	75	1/12	58	65	GC24322	540	DS	13	2420C-CB	TENV	110/115	19,78	1
41/50	62	1/12	33	65	GC24320	540	DS	13	2420C-CB	TENV	110/115	19,78	1
60/71	49	1/12	22	65	GC24318	540	DS	13	2420C-CB	TENV	110/115	19,78	1
123/148	25	1/12	11	40	GC24316	540	DS	13	2420C-CB	TENV	110/115	19,78	1
Three Phase													
156	42	1/6	23	65	GM3331	738	DS	13	2512M-CA	TENV	208/230-460	33	2

Permanent Magnet DC

Output RPM 50/60 Hz.	Max. Safe Torque In. lbs.	Input Hp	Ratio:1	OHL (lbs)	Catalog Number ^(a)	List Price	Mult. Sym.	Ap'x. Shpg. Wgt.	Motor Type & Gear Style	Voltage D.C. Armature	Voltage	Notes ^(b)	Drawing Number
90 VDC													
22	45	1/25	72	65	GP231004	542	DS	8	2314P-CB	90	0.53		3
30	38	1/25	58	65	GP232003	542	DS	8	2314P-CB	90	0.53		3
38	57	1/16	45	65	GP233006	561	DS	8	2318P-CB	90	0.80		3
52	48	1/16	33	65	GP233005	561	DS	8	2318P-CB	90	0.75		3
76	33	1/16	23	65	GP233004	561	DS	8	2318P-CB	90	0.85		3
180 VDC													
41	57	1/16	45	65	GP233026	561	DS	8	2318P-CB	180	0.42		3
53	48	1/16	33	65	GP233025	561	DS	8	2318P-CB	180	0.40		3
20	76	1/14	23	65	GP233024	561	DS	8	2318P-CB	180	0.42		3

(a) Vertical motor below gearhead not recommended.

Avoiding those positions where the high speed oil seal is immersed in oil, will provide greater security against high speed input seal wear.

(b) See notes on inside back flap.

ATTENTION: Additional ratios, voltages, and ratings are available. Application specific modifications are common, such as custom shaft dimensions, addition of brakes or encoders, specific power cords, and washdown features. Contact your local Baldor representative for assistance.

Definite Purpose
Motors

Unit Handling
Motors

Brake Motors

IEC Frame
Motors

50 Hertz
Motors

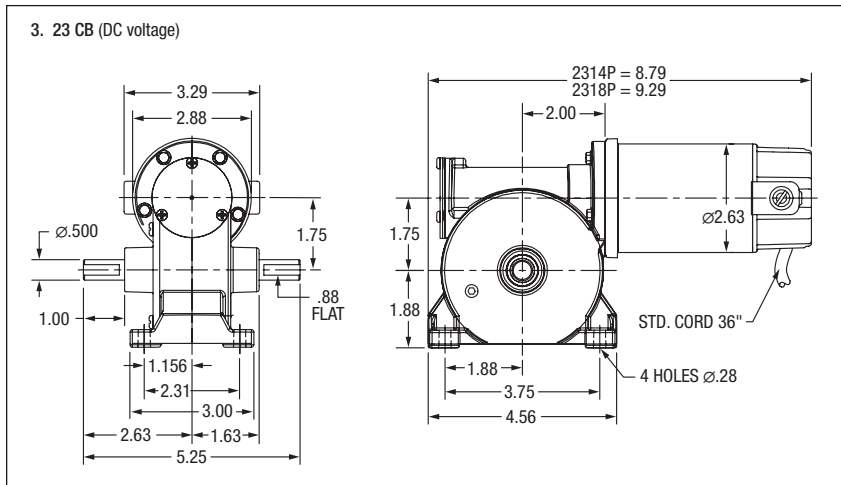
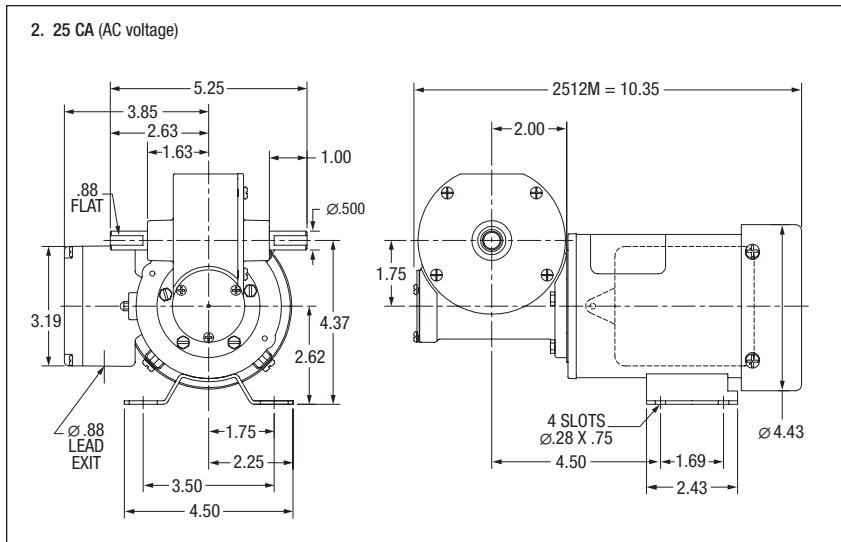
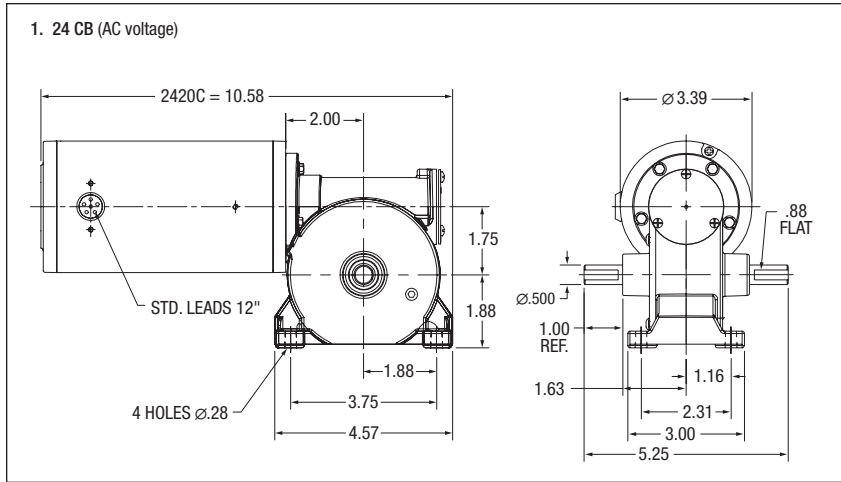
Inverter/Vector
Motors & Controls

DC Motors
and Controls

Gearmotors and
Gear Products

Motor
Accessories

Grinders



Definite Purpose Motors

Unit Handling Motors

Brake Motors

IEC Frame Motors

50 Hertz Motors

Inverter/Vector Motors & Controls

DC Motors and Controls

Gearmotors and Gear Products

Motor Accessories

Grinders



GM2503 Shown
JH Style

Features:

- Internal oil expansion bladder improves seal life and oil retention
- Integral mounting feet for ease of installation
- Bronze gearing with hardened and ground worm for smooth torque transmission
- Permanently lubricated with synthetic oil for long service life

Fixed Speed AC

Output RPM 50/60 Hz.	Max. Safe Torque In. lbs.	Input Hp	Ratio:1	OHL (lbs)	Catalog Number ^(a)	List Price	Mult. Sym.	Ap'x. Shpg. Wgt.	Motor Type & Gear Style	Enclosure	Voltage	Notes ^(b)	Drawing Number
Single Phase - Permanent Split Capacitor													
30/37	125	1/8	45	125	GC25020	643	DS	16	2524S-JK	TEFC	115	19,20	1
43/50	10	1/8	33	125	GC25015	643	DS	16	2524S-JK	TEFC	115	19,20	1
62/74	79	1/8	23	125	GC25010	643	DS	16	2524S-JK	TEFC	115	19,20	1
74	152	1/4	23	125	GC3330	701	DS	26	3324S-JK	TEFC	115	33	2
126/152	41	1/8	11	125	GC25005	643	DS	16	2524S-JK	TEFC	115	19,20	1
151	70	1/4	11	125	GC3325	701	DS	26	3324S-JK	TEFC	115	33	2
Three Phase													
34	256	1/3	50	125	GM2507	867	DS	18	2528M-JH	TEFC	208-230/460	20,33	4
35	295	1/2	50	125	GM3307	873	DS	26	3320M-JH	TEFC	208-230/460	33	5
38	125	1/6	40	125	GM3337	852	DS	16	2520M-JK	TEFC	208-230/460	20,33	3
42	230	1/3	40	125	GM2506	867	DS	18	2528M-JH	TEFC	208-230/460	20,33	4
44	280	1/2	40	125	GM3306	873	DS	26	3320M-JH	TEFC	208-230/460	33	5
104	75	1/4	33	125	GM3338	852	DS	16	2520M-JK	TEFC	208-230/460	20,33	3
75	85	1/6	23	125	GM3334	852	DS	15	2520M-JK	TEFC	208-230/460	20,33	3
84	155	1/3	20	125	GM2503	867	DS	18	2528M-JH	TEFC	208-230/460	20,33	4
88	200	1/2	20	125	GM3303	873	DS	27	3320M-JH	TEFC	208-230/460	33	5
168	90	1/3	10	125	GM2501	867	DS	18	2528M-JH	TEFC	208-230/460	20,33	4
175	135	1/2	10	125	GM3301	873	DS	26	3320M-JH	TEFC	208-230/460	33	5

Variable Speed AC

Output RPM 50/60 Hz.	Max. Safe Torque In. lbs.	Speed Range (CT)	Input Hp	Ratio:1	OHL (lbs)	Catalog Number ^(a)	List Price	Mult. Sym.	Ap'x. Shpg. Wgt.	Motor Type & Gear Style	Voltage	Notes ^(b)	Drawing Number
Three Phase - Inverter Duty													
29	413	10 - 44	1/2	60	125	IDGM3303	942	E2	28	3324M-JH	230	20,77	5
58	355	19 - 86	1/2	30	125	IDGM3302	942	E2	28	3324M-JH	230	20,77	5
170	230	57 - 255	3/4	10	125	IDGM3301	961	E2	30	3332M-JH	230	20,77	5
340	125	113 - 510	3/4	5	125	IDGM3300	961	E2	30	3332M-JH	230	20,77	5

(a) Vertical motor below gearhead not recommended.

Avoiding those positions where the high speed oil seal is immersed in oil, will provide greater security against high speed input seal wear.

(b) See notes on inside back flap.

ATTENTION: Additional ratios, voltages, and ratings are available. Application specific modifications are common, such as custom shaft dimensions, addition of brakes or encoders, specific power cords, and washdown features. Contact your local Baldor representative for assistance.

Definite Purpose Motors

Unit Handling Motors

Brake Motors

IEC Frame Motors

50 Hertz Motors

Inverter/Vector Motors & Controls

DC Motors and Controls

Gearmotors and Gear Products

Motor Accessories

Grinders



GM2503 Shown
JH Style

Features:

- Internal oil expansion bladder improves seal life and oil retention
- Integral mounting feet for ease of installation
- Bronze gearing with hardened and ground worm for smooth torque transmission
- Permanently lubricated with synthetic oil for long service life

Permanent Magnet DC

Output RPM 50/60 Hz.	Max. Safe Torque In. lbs.	Input Hp	Ratio:1	OHL (lbs)	Catalog Number ^(a)	List Price	Mult. Sym.	Ap'x. Shpg. Wgt.	Motor Type & Gear Style	Voltage D.C. Armature	Voltage	Notes ^(b)	Drawing Number
90 VDC													
30	120	1/8	58	125	GP7404	770	DS	13	2424P-JK	90	1.3	20	6
48	150	1/3	50	125	GP2507	944	DS	21	2532P-JH	90	3.4	20	7
50	234	1/2	50	125	GP3307	1,096	DS	30	3327P-JH	90	5	20	8
38	100	1/8	45	125	GP7403	770	DS	14	2424P-JK	90	1.3	20	6
50	120	1/5	45	125	GP7408	770	DS	14	2428P-JK	90	2	20	6
76	100	1/4	45	125	GP7407	770	DS	14	2428P-JK	90	2.5	20	6
62	137	1/3	40	125	GP2506	944	DS	21	2532P-JH	90	3.4	20	7
63	215	1/2	40	125	GP3306	1,096	DS	30	3327P-JH	90	5	20	8
52	75	1/8	33	125	GP7402	770	DS	14	2424P-JK	90	1.3	20	6
68	112	1/4	33	125	GP7405	770	DS	14	2428P-JK	90	2.5	20	6
104	75	1/4	33	125	GP7406	770	DS	14	2428P-JK	90	2.5	20	6
75	60	1/8	23	125	GP7401	770	DS	14	2424P-JK	90	1.3	20	6
123	95	1/3	20	125	GP2503	944	DS	21	2532P-JH	90	3.4	20	7
125	145	1/2	20	125	GP3303	1,096	DS	30	3327P-JH	90	5	20	8
173	32	1/8	11	125	GP7400	770	DS	14	2424P-JK	90	1.3	20	6
245	65	1/3	10	125	GP2501	944	DS	21	2532P-JH	90	3.4	20	7
250	100	1/2	10	125	GP3301	1,096	DS	30	3327P-JH	90	5	20	8
314	32	1/4	8	125	GP7413	770	DS	14	2428P-JK	90	2.5	20	6
180 VDC													
30	120	1/8	58	125	GP7424	770	DS	14	2420P-JK	180	0.64	20	6
38	100	1/8	45	125	GP7423	770	DS	14	2420P-JK	180	0.64	20	6
50	120	1/5	45	125	GP7428	770	DS	14	2428P-JK	180	1.1	20	6
68	135	1/4	45	125	GP7425	770	DS	14	2428P-JK	180	1.3	20	6
76	100	1/4	45	125	GP7427	770	DS	14	2428P-JK	180	1.3	20	6
52	75	1/8	33	125	GP7422	770	DS	14	2420P-JK	180	0.64	20	6
104	75	1/4	33	125	GP7426	770	DS	14	2428P-JK	180	1.3	20	6
78	60	1/8	23	125	GP7421	770	DS	14	2420P-JK	180	0.64	20	6
173	32	1/8	11	125	GP7420	770	DS	14	2424P-JK	180	0.65	20	6
314	32	1/4	11	125	GP7433	770	DS	14	2428P-JK	180	1.3	20	6

(a) Vertical motor below gearhead not recommended.

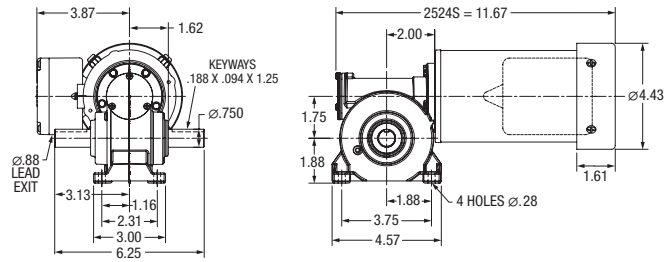
Avoiding those positions where the high speed oil seal is immersed in oil, will provide greater security against high speed input seal wear.

(b) See notes on inside back flap.

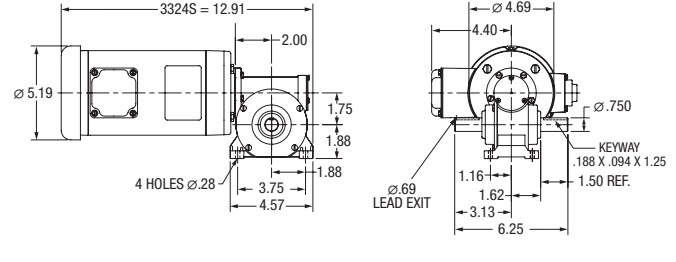
ATTENTION: Additional ratios, voltages, and ratings are available. Application specific modifications are common, such as custom shaft dimensions, addition of brakes or encoders, specific power cords, and washdown features. Contact your local Baldor representative for assistance.

Definite Purpose Motors
 Unit Handling Motors
 Brake Motors
 IEC Frame Motors
 50 Hertz Motors
 Inverter/Vector Motors & Controls
 DC Motors and Controls
 Gearmotors and Gear Products
 Motor Accessories
 Grinders

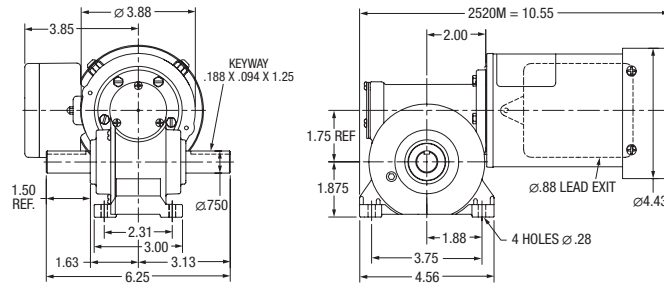
1. 25 JK (Single Phase)



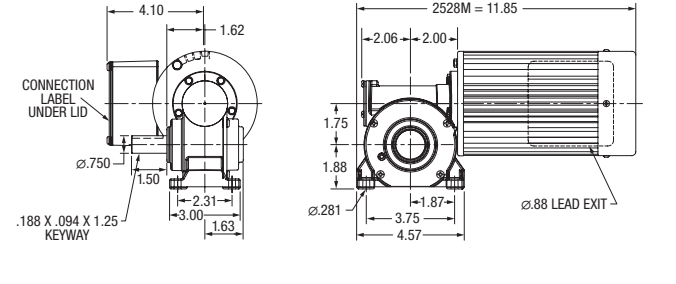
2. 33 JK (Single Phase)



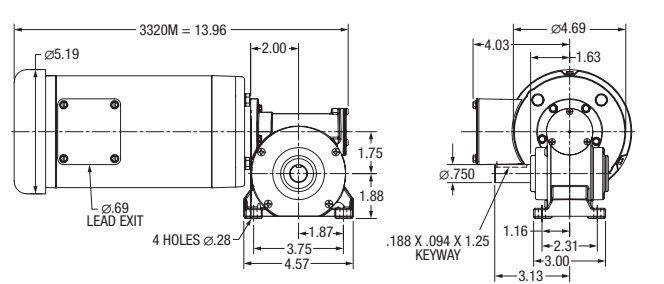
3. 25 JK (Three Phase)



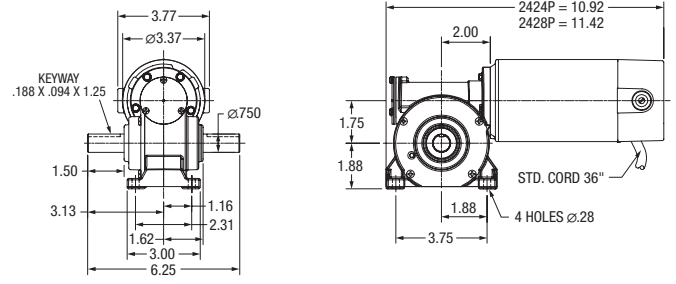
4. 25 JH (Three Phase)



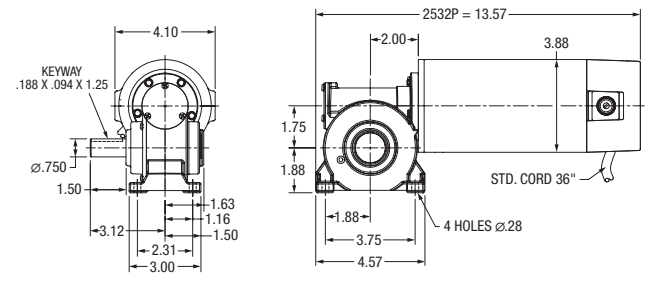
5. 33 JH (Three Phase)



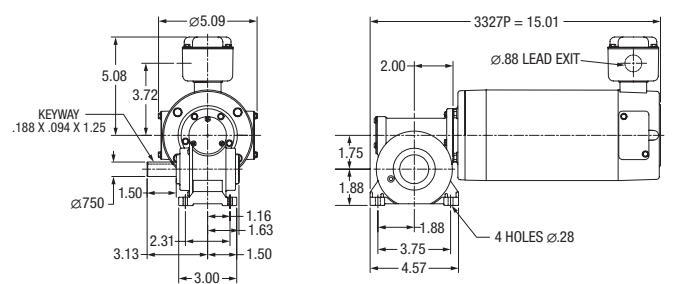
6. 24 JK (DC voltage)



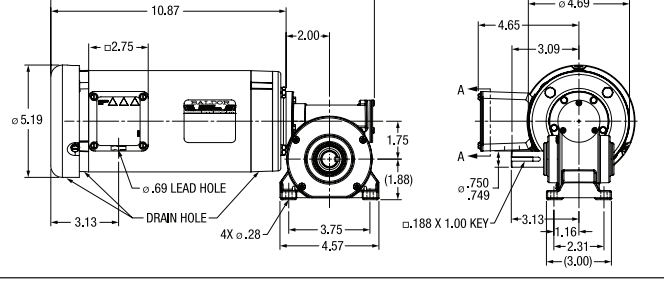
7. 25 JH (DC voltage)



8. 33 JH (DC voltage)



9. 33 JH (Inverter Duty)





GPF13517 Shown
JAF Style

Features:

- Internal oil expansion bladder improves seal life and oil retention
- Bronze gearing with hardened and ground worm for smooth torque transmission
- Permanently lubricated with synthetic oil for long service life
- Integral output flange for ease of mounting in tight spaces

Permanent Magnet DC

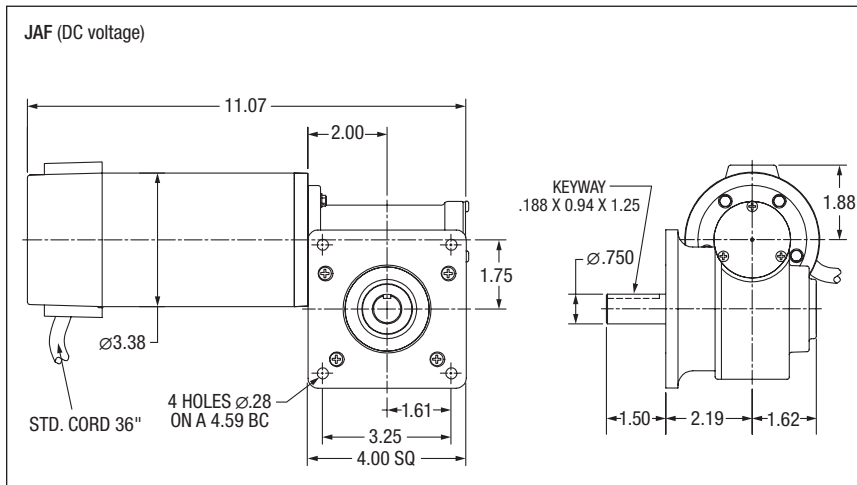
Output RPM 50/60 Hz.	Max. Safe Torque In. lbs.	Input Hp	Ratio:1	OHL (lbs)	Catalog Number ^(a)	List Price	Mult. Sym.	Ap'x. Shpg. Wgt.	Motor Type & Gear Style	Voltage D.C. Armature	Full Load Amperage Armature	Notes ^(b)
90 VDC												
111	96	1/4	23	125	GPF13516	799	DS	15	2428P-JAF	90	2.60	
76	110	1/4	22	125	GPF13517	799	DS	15	2428P-JAF	90	2.20	
167	69	1/4	15	125	GPF13515	799	DS	15	2428P-JAF	90	2.50	
312	38	1/4	8	125	GPF13514	799	DS	15	2428P-JAF	90	2.50	
180 VDC												
76	88	1/5	33	125	GPF13532	799	DS	15	135-JAF	180	1.00	
167	55	1/5	15	125	GPF13530	799	DS	15	135-JAF	180	1.00	

(a) Vertical motor below gearhead not recommended.

Avoiding those positions where the high speed oil seal is immersed in oil, will provide greater security against high speed input seal wear.

(b) See notes on inside back flap.

ATTENTION: Additional ratios, voltages, and ratings are available. Application specific modifications are common, such as custom shaft dimensions, addition of brakes or encoders, specific power cords, and washdown features. Contact your local Baldor representative for assistance.





GHL and GHM Shown
H Style

Features:

- Internal oil expansion bladder improves seal life and oil retention
- Bronze gearing with hardened and ground worm for smooth torque transmission
- Permanently lubricated with synthetic oil for long service life
- Industry standard 1.00" hollow bore shaft with torque arm included

Fixed Speed AC

Output RPM 50/60 Hz.	Max. Safe Torque In. lbs.	Input Hp	Ratio:1	Catalog Number ^(a)	List Price	Mult. Sym.	Ap'x. Shpg. Wgt.	Motor Type & Gear Style	Enclosure	Voltage	Notes ^(b)
Single Phase - Capacitor Start Induction Run											
29	600	1/2	60	GHL35060	1123	DS	45	3421L-H	TEFC	115/230	10,33
58	350	1/2	30	GHL35030	1123	DS	45	3421L-H	TEFC	115/230	10,33
58	750	1	30	GHL31030	1379	DS	55	3524L-H	TEFC	115/230	10,33
88	250	1/2	20	GHL35020	1123	DS	45	3421L-H	TEFC	115/230	10,33
88	550	1	20	GHL31020	1379	DS	55	3524L-H	TEFC	115/230	10,33
175	150	1/2	10	GHL35010	1123	DS	45	3421L-H	TEFC	115/230	33
175	300	1	10	GHL31010	1379	DS	55	3524L-H	TEFC	115/230	10,33
Single Phase - Capacitor Start Capacitor Run											
58	550	3/4	30	GHL37530	1208	DS	50	3428LC-H	TEFC	115/230	10,33
88	420	3/4	20	GHL37520	1208	DS	50	3428LC-H	TEFC	115/230	10,33
175	230	3/4	10	GHL37510	1208	DS	50	3428LC-H	TEFC	115/230	10,33
Three Phase											
29	600	1/2	60	GHM35060	1083	DS	40	3416M-H	TEFC	230/460	30,33
35	609	1/2	50	GHM35050	1083	DS	40	3416M-H	TEFC	230/460	10,30,33
44	528	1/2	40	GHM35040	1083	DS	27	3416M-H	TEFC	230/460	30,33
58	350	1/2	30	GHM35030	1083	DS	40	3416M-H	TEFC	230/460	30,33
58	550	3/4	30	GHM37530	1114	DS	42	3420M-H	TEFC	208-230/460	33
58	750	1	30	GHM31030	1114	DS	48	3426M-H	TEFC	208-230/460	33
87	200	1/2	20	GHM35020	1083	DS	40	3416M-H	TEFC	230/460	10,30,33
88	420	3/4	20	GHM37520	1114	DS	42	3420M-H	TEFC	208-230/460	33
88	550	1	20	GHM31020	1114	DS	45	3426M-H	TEFC	208-230/460	33
174	135	1/2	10	GHM35010	1083	DS	40	3416M-H	TEFC	230/460	30,33
175	230	3/4	10	GHM37510	1114	DS	42	3420M-H	TEFC	208-230/460	10,33
175	300	1	10	GHEM31010	1214	DS	45	3426M-H	TEFC	208-230/460	1,33

(a) Vertical motor below gearhead not recommended.

Avoiding those positions where the high speed oil seal is immersed in oil, will provide greater security against high speed input seal wear.

(b) See notes on inside back flap.

ATTENTION: Additional ratios, voltages, and ratings are available. Application specific modifications are common, such as custom shaft dimensions, addition of brakes or encoders, specific power cords, and washdown features. Contact your local Baldor representative for assistance.

H Gearbox Accessories



Baldor offers optional base and shaft kits for H style gearmotors. Adding a base and shaft kit allows them to be used in applications requiring a rightangle shaft extension. The shaft can be used for either right or left hand output applications.

Catalog Number	Description	List Price	Mult. Sym.	Ap'x. Shpg. Wgt.
B19H71	Horiz Base Kit	82	A8	1
SH10HS	Output Shaft Kit	26	A8	2
TA05HK	Torque Arm Kit	125	A8	2



GCP24114 Shown
PSSH Style

Features:

- Induction hardened helical and spur gears for efficient torque transmission
- Ball and needle bearing construction for increased torque and overhung load capabilities
- Permanently lubricated with synthetic oil for long service life
- Industry standard dimensions for ease of installation

Fixed Speed AC

Output RPM 50/60 Hz.	Max. Safe Torque In. lbs.	Input Hp	Ratio:1	OHL (lbs)	Catalog Number ^(a)	List Price	Mult. Sym.	Ap'x. Shpg. Wgt.	Motor Type & Gear Style	Enclosure	Voltage	Notes ^(b)	Drawing Number
Single Phase - Permanent Split Capacitor													
1/1.5	142	1/100	1320	125	GCP24369	595	DS	10	2408C-PSSH	TENV	115	19,20,78	2
2/2.5	144	1/100	720	125	GCP24702	595	DS	10	2408C-PSSH	TENV	115	10,19,20,78	2
4/5	142	1/80	320	125	GCP24362	567	DS	10	2412C-PSSH	TENV	115	19,20,78	2
8/9	144	1/80	180	125	GCP24186	567	DS	10	2412C-PSSH	TENV	115	10,19,20,78	2
8/9	120	1/40	180	125	GCP24114	567	DS	10	2412C-PSSH	TENV	115	19,20,78	2
13/16	120	1/20	100	125	GCP24100	561	DS	10	2416C-PSSH	TENV	115	19,20,78	2
15/18	120	1/25	90	125	GCP24122	567	DS	10	2416C-PSSH	TENV	115	19,20,78	2
18/22	120	1/20	75	125	GCP24072	561	DS	10	2416C-PSSH	TENV	115	10,19,20,78	2
23/27	81	1/25	60	125	GCP24124	561	DS	10	2416C-PSSH	TENV	115	19,20,78	1
27/33	103	1/20	50	125	GCP24050	561	DS	10	2416C-PSSH	TENV	115	10,19,20,78	1
35/42	77	1/20	38	125	GCP24037	561	DS	10	2416C-PSSH	TENV	115	10,19,20,78	1
45/55	84	1/12	30	125	GCP24134	561	DS	10	2424C-PSSH	TENV	115	19,20,78	1
54/65	54	1/20	25	100	GCP24026	542	DS	10	2416C-PSSH	TENV	115	10,19,20,78	1
68/83	56	1/12	20	125	GCP24136	540	DS	10	2424C-PSSH	TENV	115	19,20,78	1
82/98	30	1/20	16	100	GCP24017	542	DS	10	2416C-PSSH	TENV	115	19,20,78	1
90/109	43	1/12	15	100	GCP24138	540	DS	10	2424C-PSSH	TENV	115	19,20,78	1
107/128	25	1/20	13	100	GCP24013	542	DS	10	2416C-PSSH	TENV	115	10,19,20,78	1
135/162	20	1/20	10	100	GCP24010	542	DS	10	2416C-PSSH	TENV	115	10,19,20,78	1
136/163	29	1/12	10	100	GCP24140	540	DS	10	2424C-PSSH	TENV	115	19,20,78	1
208/250	13	1/20	7	100	GCP24007	542	DS	10	2416C-PSSH	TENV	115	10,19,20,78	1
270/325	10	1/20	5	100	GCP24005	542	DS	10	2416C-PSSH	TENV	115	10,19,20,78	1
272/326	14	1/12	5	100	GCP24142	540	DS	10	2424C-PSSH	TENV	115	19,20,78	1

Variable Speed AC

Output RPM 50/60 Hz.	Max. Safe Torque In. lbs.	Speed Range (CT)	Input Hp	Ratio:1	OHL (lbs)	Catalog Number ^(a)	List Price	Mult. Sym.	Ap'x. Shpg. Wgt.	Motor Type & Gear Style	Voltage	Notes ^(b)	Drawing Number
Three Phase - Inverter Duty													
10	144	3 - 15	1/25	180	125	IDGMP24180	613	E2	11	2412M-PSSH	230	77	3
19	144	6 - 29	1/15	90	125	IDGMP24090	613	E2	11	2416M-PSSH	230	77	3
29	130	9 - 42	1/15	60	125	IDGMP24060	595	E2	11	2416M-PSSH	230	77	3
58	125	18 - 83	1/8	30	125	IDGMP24030	595	E2	10	2424M-PSSH	230	77	3
86	142	28 - 128	1/4	20	100	IDGMP24020	561	E2	10	2524M-PSSH	230	77	3
172	86	56 - 251	1/4	10	100	IDGMP24010	561	E2	10	2524M-PSSH	230	77	3
345	44	112 - 503	1/4	5	100	IDGMP24005	561	E2	10	2524M-PSSH	230	77	3

(a) Vertical motor below gearhead not recommended.

Avoiding those positions where the high speed oil seal is immersed in oil, will provide greater security against high speed input seal wear.

(b) See notes on inside back flap.

ATTENTION: Additional ratios, voltages, and ratings are available. Application specific modifications are common, such as custom shaft dimensions, addition of brakes or encoders, specific power cords, and washdown features. Contact your local Baldor representative for assistance.

Definite Purpose Motors

Unit Handling Motors

Brake Motors

IEC Frame Motors

50 Hertz Motors

Inverter/Vector Motors & Controls

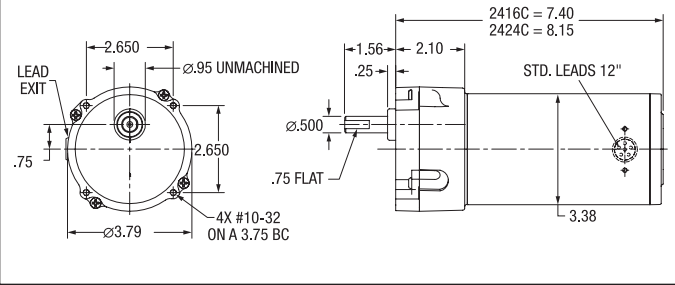
DC Motors and Controls

Gearmotors and Gear Products

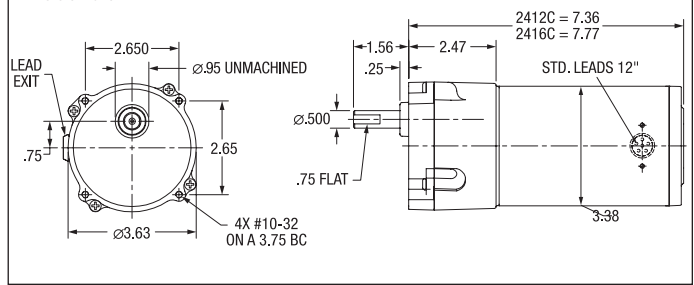
Motor Accessories

Grinders

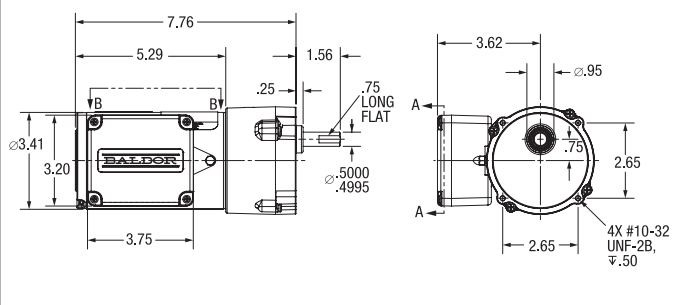
1. 24 - PSSH
2 & 3 STAGES



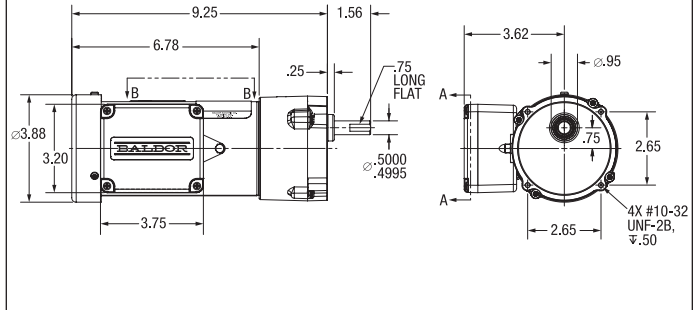
2. 24 - PSSH
4 & 5 STAGES



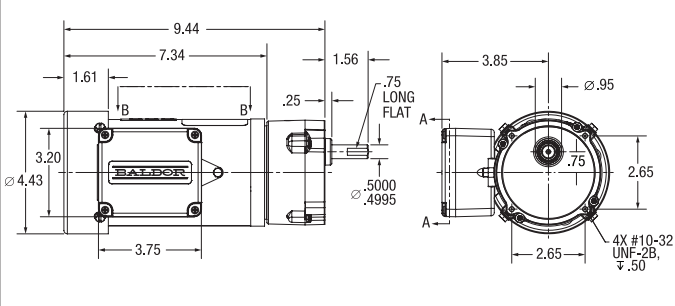
3. 24 - PSSH
4 STAGES



4. 24 - PSSH
3 STAGES



5. 25 - PSSH
2 STAGES



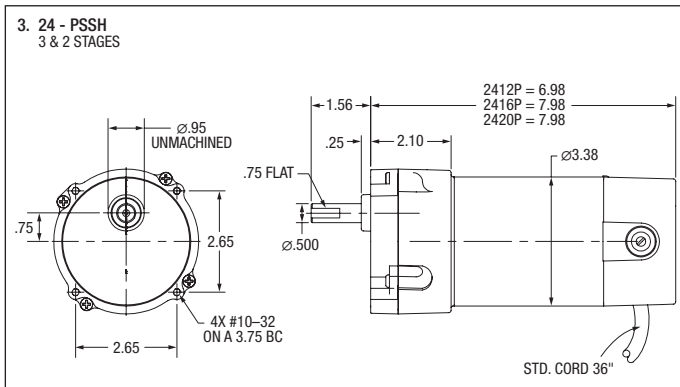
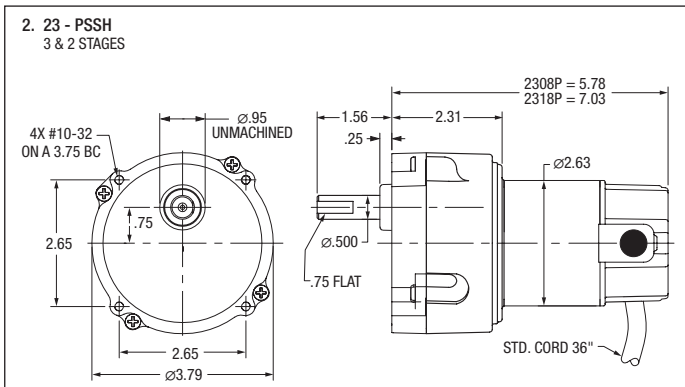
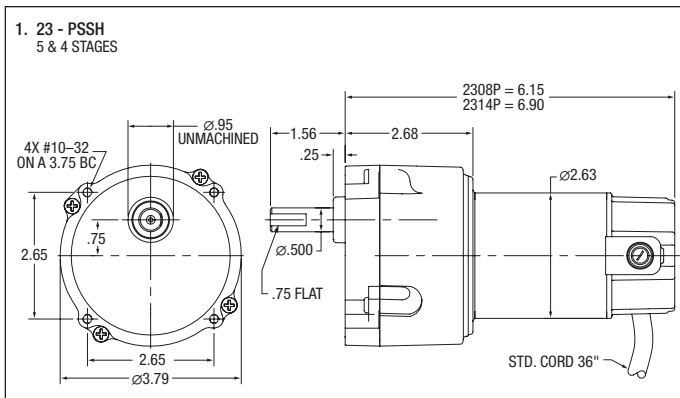
Permanent Magnet DC

Output RPM 50/60 Hz.	Max. Safe Torque In. lbs.	Input Hp	Ratio:1	OHL (lbs)	Catalog Number ^(a)	List Price	Mult. Sym.	Ap'x. Shpg. Wgt.	Motor Type & Gear Style	Voltage D.C. Armature	Voltage	Notes ^(b)	Drawing Number
90 VDC													
10	100	1/40	180	125	GPP230186	552	DS	12	2308P-PSSH	90	0.30	10,20	1
9	100	1/45	180	125	GPP231108	552	DS	6	2308P-PSSH	90	0.30	20	1
13	100	1/40	135	125	GPP230139	552	DS	7	2308P-PSSH	90	0.30	20	1
19	118	1/21	90	125	GPP232110	552	DS	7	2314P-PSSH	90	0.50	20	1
25	100	1/20	75	125	GPP230072	542	DS	7	2318P-PSSH	90	0.60	10,20	1
29	40	1/50	60	125	GPP231109	542	DS	6	2308P-PSSH	90	0.30	20	2
30	100	1/20	60	125	GPP233112	542	DS	8	2318P-PSSH	90	0.50	20	2
43	112	1/12	60	125	GPP12505	542	DS	8	2412P-PSSH	90	0.90	20	3
58	83	1/12	44	125	GPP12504	542	DS	8	2412P-PSSH	90	0.90	20	3
49	55	1/20	38	125	GPP230037	542	DS	7	2318P-PSSH	90	0.60	10,20	1
60	50	1/17	30	125	GPP233111	542	DS	8	2318P-PSSH	90	0.50	20	2
71	40	1/20	25	100	GPP230025	537	DS	7	2318P-PSSH	90	0.60	20	2
115	43	1/12	22	100	GPP12503	537	DS	8	2412P-PSSH	90	0.90	20	3
95	30	1/20	20	100	GPP230019	537	DS	7	2318P-PSSH	90	0.60	20	2
120	10	1/35	20	100	GPP231110	537	DS	6	2308P-PSSH	90	0.20	20	2
125	39	1/12	20	100	GPP12502	537	DS	8	2412P-PSSH	90	0.90	20	3
139	20	1/20	13	100	GPP230013	537	DS	7	2318P-PSSH	90	0.60	10,20	2
185	15	1/20	10	100	GPP230010	537	DS	7	2318P-PSSH	90	0.60	10,20	2
250	20	1/12	10	100	GPP12501	537	DS	8	2412P-PSSH	90	0.90	20	3
269	11	1/20	7	100	GPP230007	537	DS	7	2318P-PSSH	90	0.60	20	2
359	8	1/20	5	100	GPP230005	537	DS	7	2318P-PSSH	90	0.60	10,20	2
180 VDC													
19	118	1/22	90	125	GPP233120	561	DS	8	2314P-PSSH	180	0.20	20	1
43	112	1/12	40	125	GPP12525	552	DS	11	2420P-PSSH	180	0.50	20	3
60	50	1/20	30	125	GPP233121	552	DS	8	2318P-PSSH	180	0.30	20	2
250	20	1/12	10	100	GPP12521	537	DS	9	2416P-PSSH	180	0.50	20	3

(a) Vertical motor below gearhead not recommended.
Avoiding those positions where the high speed oil seal is immersed in oil, will provide greater security against high speed input seal wear.

(b) See notes on inside back flap.

ATTENTION: Additional ratios, voltages, and ratings are available.
Application specific modifications are common, such as custom shaft dimensions, addition of brakes or encoders, specific power cords, and washdown features. Contact your local Baldor representative for assistance.





GCP24232 Shown
PSM Style

Features:

- Induction hardened helical and spur gears for efficient torque transmission
- Ball and needle bearing construction for increased torque and overhung load capabilities
- Permanently lubricated with synthetic oil for long service life
- Industry standard dimensions for ease of installation
- Integral base mounting provisions for retro fit if needed

Fixed Speed AC

Output RPM 50/60 Hz.	Max. Safe Torque In. lbs.	Input Hp	Ratio:1	OHL (lbs)	Catalog Number ^(a)	List Price	Mult. Sym.	Ap'x. Shpg. Wgt.	Motor Type & Gear Style	Enclosure	Voltage	Notes ^(b)	Drawing Number
Single Phase - Permanent Split Capacitor													
15/18	237	1/15	90	130	GCP24232	647	DS	14	2424C-PSM	TENV	115	19,78	1
23/27	167	1/12	60	130	GCP24234	617	DS	14	2424C-PSM	TENV	115	19,78	1
Single Phase - Split Phase													
43/36	149	1/9	40	130	GCP25052	617	DS	14	2524S-PSM	TEFC	115	19	2
47/57	11	1/9	30	130	GCP25054	617	DS	14	2524S-PSM	TEFC	115	19	2
84/70	74	1/9	20	65	GCP25056	587	DS	14	2524S-PSM	TEFC	115	19	2
92/111	57	1/9	15	65	GCP25058	587	DS	14	2524S-PSM	TEFC	115	19	2
138/166	38	1/9	10	65	GCP25060	587	DS	14	2524S-PSM	TEFC	115	19	2
275/330	19	1/9	5	65	GCP25062	587	DS	14	2524S-PSM	TEFC	115	19	2

Variable Speed AC

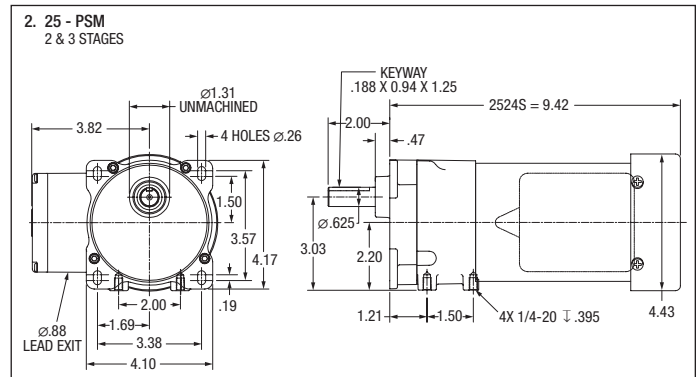
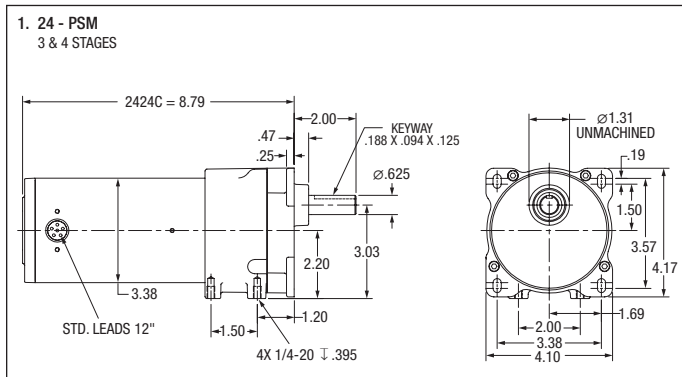
Output RPM 50/60 Hz.	Max. Safe Torque In. lbs.	Speed Range (CT)	Input Hp	Ratio:1	OHL (lbs)	Catalog Number ^(a)	List Price	Mult. Sym.	Ap'x. Shpg. Wgt.	Motor Type & Gear Style	Voltage	Notes ^(b)	Drawing Number
Three Phase - Inverter Duty													
10	184	3 - 14	1/25	180	130	IDGMP25181	729	E2	14	2412-PSM	230	77	3
19	176	6 - 29	1/15	90	130	IDGMP25091	729	E2	14	2416-PSM	230	77	3
29	204	9 - 42	1/15	60	130	IDGMP25061	698	E2	14	2424-PSM	230	77	3
58	230	19 - 84	1/8	30	130	IDGMP25031	698	E2	14	2524-PSM	230	77	3
86	162	28 - 126	1/4	20	65	IDGMP25021	698	E2	14	2524-PSM	230	77	3
172	86	56 - 251	1/4	10	65	IDGMP25011	667	E2	14	2524-PSM	230	77	3
345	44	112 - 503	1/4	5	65	IDGMP25006	667	E2	14	2524-PSM	230	77	3

(a) Vertical motor below gearhead not recommended.

Avoiding those positions where the high speed oil seal is immersed in oil, will provide greater security against high speed input seal wear.

(b) See notes on inside back flap.

ATTENTION: Additional ratios, voltages, and ratings are available. Application specific modifications are common, such as custom shaft dimensions, addition of brakes or encoders, specific power cords, and washdown features. Contact your local Baldor representative for assistance.



Definite Purpose
Motors

Unit Handling
Motors

Brake Motors

IEC Frame
Motors

50 Hertz
Motors

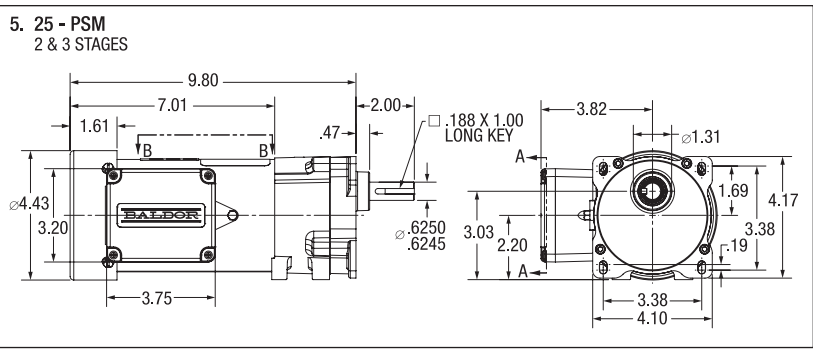
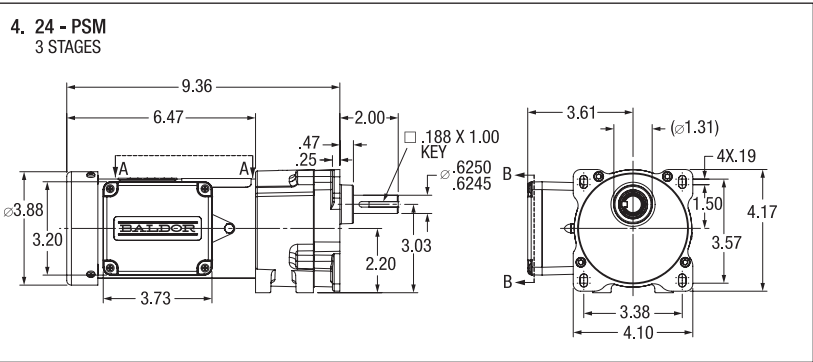
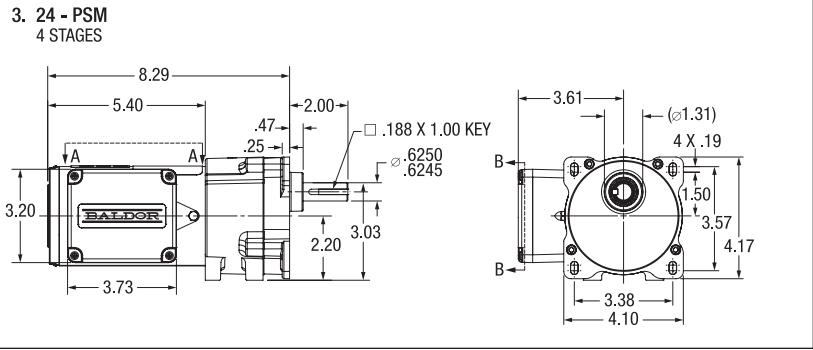
Inverter/Vector
Motors & Controls

DC Motors
and Controls

Gearmotors and
Gear Products

Motor
Accessories

Grinders



Permanent Magnet DC

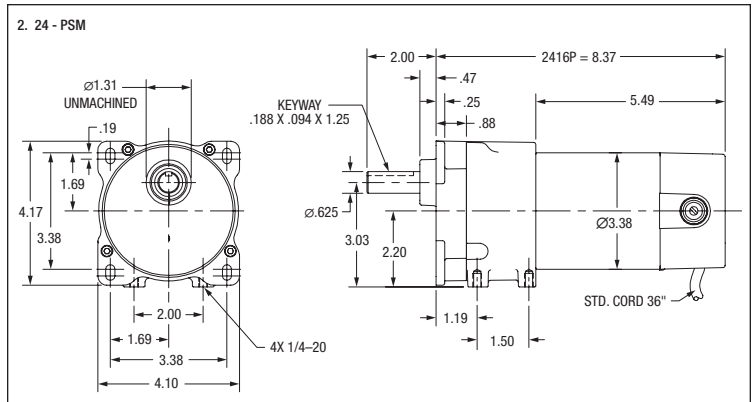
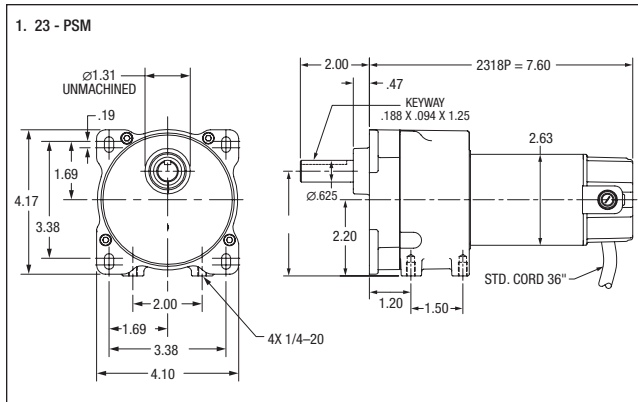
Output RPM 50/60 Hz.	Max. Safe Torque In. lbs.	Input Hp	Ratio:1	OHL (lbs)	Catalog Number ^(a)	List Price	Mult. Sym.	Ap'x. Shpg. Wgt.	Motor Type & Gear Style	Voltage D.C. Armature	Full Load Amperage Armature	Notes ^(b)	Drawing Number
90 VDC													
8	190	1/20	240	130	GPP231329	693	DS	7	2318P-PSM	90	0.50	10,20	1
15	197	1/16	120	130	GPP233141	693	DS	8	2318P-PSM	90	0.80	20	1
19	180	1/15	90	130	GPP233140	693	DS	10	2318P-PSM	90	0.50	20	1
30	174	1/8	80	130	GPP12556	694	DS	12	2416P-PSM	90	1.30	20	2
42	165	1/8	60	130	GPP12547	694	DS	12	2416P-PSM	90	1.30	20	2
34	85	1/20	50	130	GPP230053	675	DS	7	2318P-PSM	90	0.70	10,20	1
63	116	1/8	40	130	GPP12545	694	DS	12	2416P-PSM	90	1.30	20	2
83	90	1/8	30	130	GPP12544	694	DS	12	2416P-PSM	90	1.30	20	2
94	76	1/8	25	65	GPP12559	663	DS	12	2416P-PSM	90	1.30	20	2
94	160	1/4	25	65	GPP24019	726	DS	12	2428P-PSM	90	2.50	20	2
125	58	1/8	20	65	GPP12543	663	DS	12	2416P-PSM	90	1.30	20	2
167	45	1/8	15	65	GPP12542	663	DS	10	2416P-PSM	90	1.30	20	2
170	90	1/4	15	65	GPP24011	726	DS	12	2428P-PSM	90	2.50	20	2
250	30	1/8	10	65	GPP12541	663	DS	10	2416P-PSM	90	1.30	20	2
360	20	1/8	7	65	GPP12555	663	DS	12	2416P-PSM	90	1.30	10,20	2
360	40	1/4	7	65	GPP24005	726	DS	12	2428P-PSM	90	2.50	20	2
500	15	1/8	5	65	GPP12540	663	DS	10	2416P-PSM	90	1.30	20	2
180 VDC													
42	174	1/8	60	130	GPP12567	670	DS	11	2416P-PSM	180	0.70	20	2
83	87	1/8	30	130	GPP12564	670	DS	11	2416P-PSM	180	0.70	20	2
250	30	1/8	10	65	GPP12561	663	DS	11	2416P-PSM	180	0.70	20	2
500	15	1/8	5	65	GPP12560	663	DS	11	2416P-PSM	180	0.70	20	2

(a) Vertical motor below gearhead not recommended.

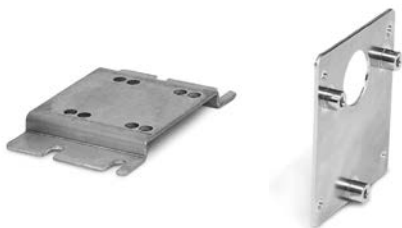
Avoiding those positions where the high speed oil seal is immersed in oil, will provide greater security against high speed input seal wear.

(b) See notes on inside back flap.

ATTENTION: Additional ratios, voltages, and ratings are available. Application specific modifications are common, such as custom shaft dimensions, addition of brakes or encoders, specific power cords, and washdown features. Contact your local Baldor representative for assistance.



PSM Mounting Adapters



B92 is a formed steel mounting base that bolts to the machined surface on bottom of the PSM gear box. Provides secure foot mounting of gearmotor and drop-in interchangeability with other major manufacturers.

B93 is a three point face mounting adapter. Provides interchangeability with other manufacturers.

Catalog Number	Description	List Price	Mult. Sym.	Ap'x. Shpg. Wgt.
B92	Foot Mount	49	A8	1
B93	3 Point Face Mount	87	A8	1



PSL Style

Features:

- Induction hardened helical and spur gears for efficient torque transmission
- Ball and needle bearing construction for increased torque and overhung load capabilities
- Permanently lubricated with synthetic oil for long service life
- Industry standard dimensions for ease of installation

Fixed Speed AC

Output RPM 50/60 Hz.	Max. Safe Torque In. lbs.	Input Hp	Ratio:1	OHL (lbs)	Catalog Number ^(a)	List Price	Mult. Sym.	Ap'x. Shpg. Wgt.	Motor Type & Gear Style	Enclosure	Voltage	Notes ^(b)	Drawing Number
Single Phase - Permanent Split Capacitor													
5/6	325	1/25	300	200	GCP24002	896	DS	15	2416C-PSL	TENV	115	19,20,78	1
6/8	369	1/6	225	200	GCP25216	896	DS	20	2520C-PSL	TEFC	115/230	19,20	2
8/9	235	1/25	180	200	GCP24004	896	DS	15	2416C-PSL	TENV	115	19,20,78	1
11/14	330	1/12	120	200	GCP24020	896	DS	15	2424C-PSL	TENV	115	19,20,78	1
14/17	450	1/6	100	200	GCP25102	881	DS	20	2524C-PSL	TEFC	115/230	10,19,20	2
15/18	250	1/12	90	200	GCP24022	896	DS	15	2424C-PSL	TENV	115	19,20,78	1
18/21	400	1/6	80	200	GCP25082	881	DS	20	2524C-PSL	TEFC	115/230	10,19,20	2
23/28	313	1/6	60	200	GCP25658	881	DS	20	2524C-PSL	TEFC	115/230	19,20	2
48/58	164	1/6	30	300	GCP3305	881	DS	20	2524C-PSLH	TEFC	115/230	19,20	2
71/86	112	1/6	20	300	GCP3310	849	DS	20	2524C-PSLH	TEFC	115/230	19,20	2
144/173	56	1/6	10	300	GCP3315	849	DS	20	2524C-PSLH	TEFC	115/230	19,20	2
Single Phase - Split Phase													
23/28	270	1/8	60	200	GCP25002	870	DS	18	2524S-PSL	TEFC	115	19,20	2
45/55	135	1/8	30	300	GCP25004	870	DS	18	2524S-PSL	TEFC	115	19,20	2
71/85	92	1/8	20	300	GCP25006	840	DS	18	2524S-PSL	TEFC	115	19,20	3
141/170	46	1/8	10	300	GCP25008	840	DS	17	2524S-PSL	TEFC	115	19,20	3
283/340	23	1/8	5	300	GCP25010	840	DS	18	2524S-PSL	TEFC	115	19,20	3
Single Phase - Capacitor Start Induction Run													
29	483	1/4	60	200	GLP3310	990	DS	25	3320L-PSLH	TEFC	115/208-230	33	5
35	438	1/3	50	300	GLP3328	990	DS	28	3324L-PSLH	TEFC	115/208-230	20,33	5
58	320	1/3	30	300	GLP3330	990	DS	25	3324L-PSLH	TEFC	115/208-230	20,33	5
86	218	1/3	20	300	GLP3332	931	DS	25	3324L-PSLH	TEFC	115/208-230	20,33	5
173	109	1/3	10	300	GLP3336	931	DS	27	3324L-PSLH	TEFC	115/208-230	20,33	5
345	55	1/3	5	300	GLP3338	931	DS	25	3324L-PSLH	TEFC	115/208-230	20,33	5
Single Phase - Capacitor Start Induction Run													
36/44	294	1/4	38	300	GLP25036	870	DS	16	2528LC-PSL	TEFC	115/230	10,19,20	7
45/55	250	1/4	30	300	GLP25029	870	DS	24	2528LC-PLS	TEFC	115/230	10,19,20	7
58	484	1/2	30	300	GLP3342	1044	DS	32	3328LC-PSL	TEFC	115/208-230	20,33	8
68/82	177	1/4	20	300	GLP25019	819	DS	24	2528LC-PSL	TEFC	115/230	10,19,20	7
88	326	1/2	20	300	GLP3344	985	DS	31	3328LC-PSL	TEFC	115/208-230	20,33	8
91/110	128	1/4	15	300	GLP25015	819	DS	21	2528LC-PSL	TEFC	115/230	19,20	7
117	245	1/2	15	300	GLP3346	985	DS	31	3328LC-PSL	TEFC	115/208-230	20,33	8
137/165	91	1/4	10	300	GLP25011	819	DS	21	2528LC-PSL	TEFC	115/230	10,19,20	7
175	164	1/2	10	300	GLP3348	985	DS	31	3328LC-PSL	TEFC	115/208-230	20,33	8
275/330	41	1/4	5	300	GLP25005	819	DS	24	2528LC-PSL	TEFC	115/230	10,19,20	7
Three Phase													
43	627	1/2	40	300	GMP3340	1,035	DS	27	3320M-PSLH	TEFC	208-230/460	33	6
57	320	1/3	30	300	GMP3330	1035	DS	27	3320M-PSLH	TEFC	208-230/460	33	6
58	484	1/2	30	300	GMP3342	1,035	DS	27	3320M-PSLH	TEFC	208-230/460	33	6
86	218	1/3	20	300	GMP3332	977	DS	27	3320M-PSLH	TEFC	208-230/460	33	6
86	326	1/2	20	300	GMP3344	977	DS	25	3320M-PSLH	TEFC	208-230/460	33	6
173	109	1/3	10	300	GMP3336	977	DS	25	3320M-PSLH	TEFC	208-230/460	33	6
173	164	1/2	10	300	GMP3348	977	DS	25	3320M-PSLH	TEFC	208-230/460	33	6
345	55	1/3	5	300	GMP3338	977	DS	24	3320M-PSLH	TEFC	208-230/460	33	6

(a) Vertical motor below gearhead not recommended.

Avoiding those positions where the high speed oil seal is immersed in oil, will provide greater security against high speed input seal wear.

(b) See notes on inside back flap.

ATTENTION: Additional ratios, voltages, and ratings are available. Application specific modifications are common, such as custom shaft dimensions, addition of brakes or encoders, specific power cords, and washdown features. Contact your local Baldor representative for assistance.

Definite Purpose Motors

Unit Handling Motors

Brake Motors

IEC Frame Motors

50 Hertz Motors

Inverter/Vector Motors & Controls

DC Motors and Controls

Gearmotors and Gear Products

Motor Accessories

Grinders

Variable Speed AC

Output RPM 50/60 Hz.	Max. Safe Torque In. lbs.	Speed Range (CT)	Input Hp	Ratio:1	OHL (lbs)	Catalog (a) Number	List Price	Mult. Sym.	Ap'x. Shpg. Wgt.	Motor Type & Gear Style	Voltage	Notes (b)	Drawing Number
Three Phase - Inverter Duty													
9	369	3 - 15	1/15	180	200	IDGMP25182	1059	E2	20	2512M-PSL	230	77	2
19	360	6 - 29	1/8	90	200	IDGMP25092	1059	E2	20	2516M-PSL	230	77	2
28	325	9 - 42	1/6	60	200	IDGMP25063	1044	E2	18	2516M-PSL	230	77	2
41	500	14 - 62	3/8	40	300	IDGMP25062	1037	E2	20	2528M-PSL	230	77	2
43	637	14 - 65	1/2	40	300	IDGMP25040	1037	E2	28	3324M-PSLH	230	77	4
56	247	19 - 84	1/4	30	300	IDGMP25033	1044	E2	18	2524M-PSL	230	77	2
55	350	18 - 83	3/8	30	300	IDGMP2505	1037	E2	20	2528M-PSL	230	77	2
57	482	19 - 86	1/2	30	300	IDGMP25032	1037	E2	28	3324M-PSLH	230	77	4
84	167	28 - 126	1/4	20	300	IDGMP25023	1025	E2	17	2524M-PSL	230	77	3
83	233	28 - 125	3/8	20	300	IDGMP2503	1012	E2	18	2528M-PSL	230	77	3
86	326	29 - 129	1/2	20	300	IDGMP25022	1012	E2	25	3324M-PSLH	230	77	4
115	245	38 - 173	1/2	15	300	IDGMP25015	1012	E2	25	3324M-PSLH	230	77	4
167	85	56 - 251	1/4	10	300	IDGMP25013	1025	E2	17	2524M-PSL	230	77	3
165	116	55 - 248	3/8	10	300	IDGMP2501	1012	E2	18	2528M-PSL	230	77	3
172	164	57 - 258	1/2	10	300	IDGMP25012	1012	E2	25	3324M-PSLH	230	77	4
335	44	112 - 503	1/4	5	300	IDGMP25008	1025	E2	17	2524M-PSL	230	77	3
330	58	110 - 495	3/8	5	300	IDGMP2500	1012	E2	18	2528M-PSL	230	77	3
345	82	115 - 518	1/2	5	300	IDGMP25007	1012	E2	25	3324M-PSLH	230	77	4

(a) Vertical motor below gearhead not recommended.

Avoiding those positions where the high speed oil seal is immersed in oil, will provide greater security against high speed input seal wear.

(b) See notes on inside back flap.

ATTENTION: Additional ratios, voltages, and ratings are available. Application specific modifications are common, such as custom shaft dimensions, addition of brakes or encoders, specific power cords, and washdown features. Contact your local Baldor representative for assistance.
See page 210 for matching AC Drives.

“L” Type Mounting Brackets

Applications: Mounting bracket for PSSH and PSL gearmotors. Securely mounts to gear face in 90 degree locations for floor, wall or ceiling mount. Catalog Number LB74 is not recommended for PSL/PSLH units weighing over 20 lbs. For units weighing more than 20 lbs. use Catalog Number LB75.



Catalog Number	Gearhead Style	List Price	Mult. Sym.	Color	Ap'x. Shpg. Wgt
LB73	PSSH	49	A8	Black	2
LB74	PSL	69	A8	Black	2
LB75	PSL/PSLH	96	A8	Black	7
LB73GR	PSSH	49	A8	Baldor Grey	2
LB74GR	PSL	69	A8	Baldor Grey	2
LB75GR	PSL/PSLH	96	A8	Baldor Grey	7

Definite Purpose Motors

Unit Handling Motors

Brake Motors

IEC Frame Motors

50 Hertz Motors

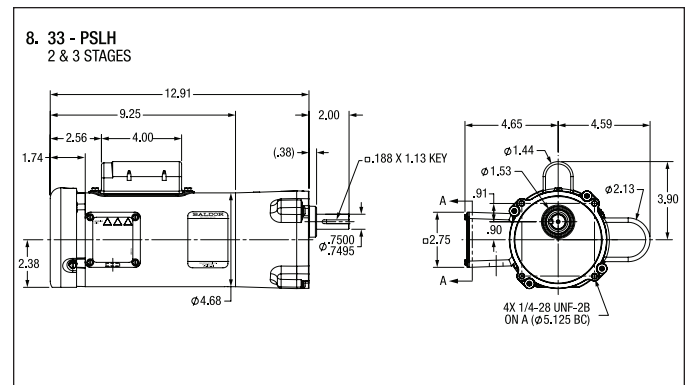
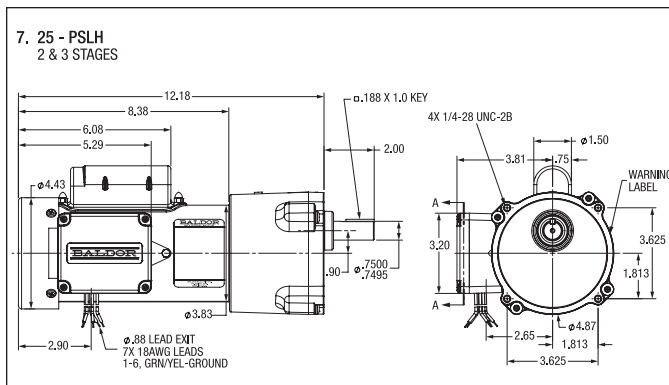
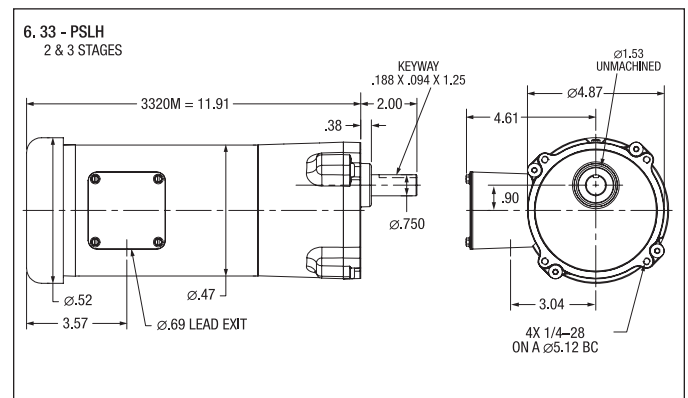
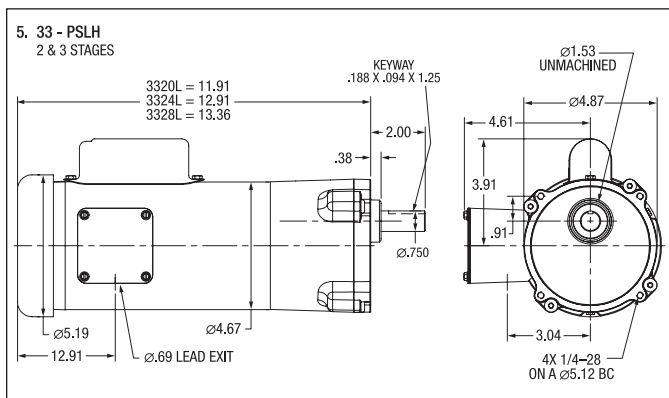
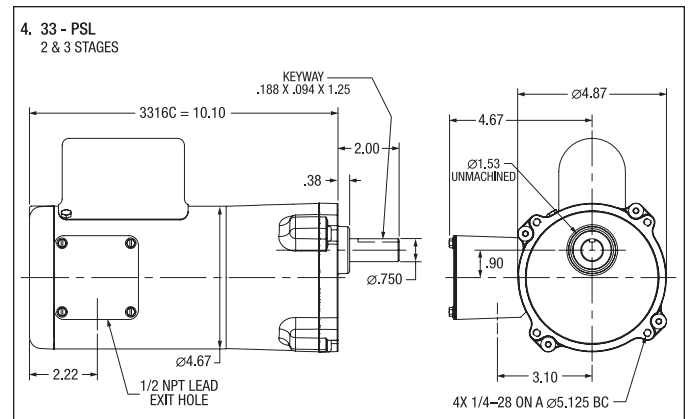
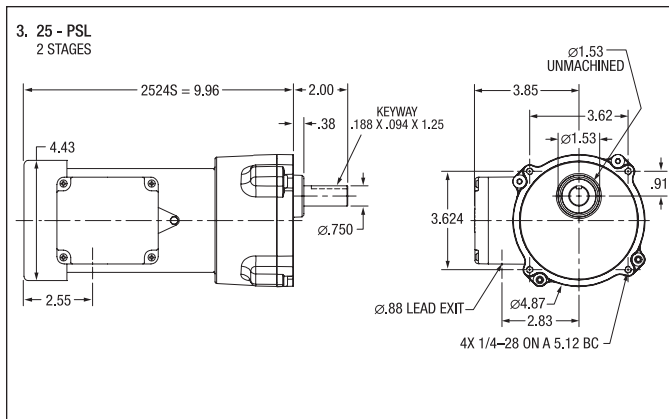
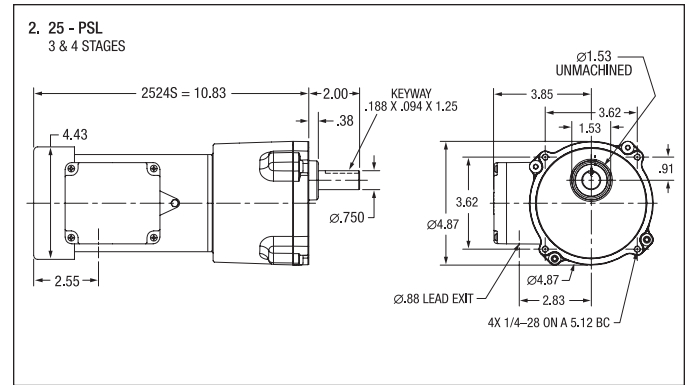
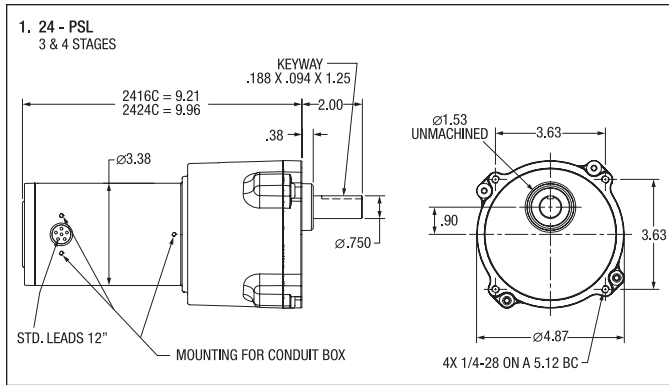
Inverter/Vector Motors & Controls

DC Motors and Controls

Gearmotors and Gear Products

Motor Accessories

Grinders



Definite Purpose Motors

Unit Handling Motors

Brake Motors

IEC Frame Motors

50 Hertz Motors

Inverter/Vector Motors & Controls

DC Motors and Controls

Gearmotors and Gear Products

Motor Accessories

Grinders

Definite Purpose Motors

Unit Handling Motors

Brake Motors

IEC Frame Motors

50 Hertz Motors

Inverter/Vector Motors & Controls

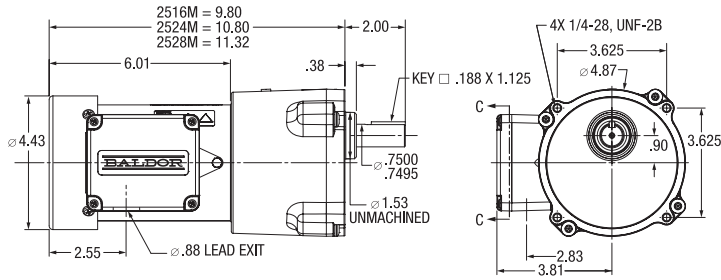
DC Motors and Controls

Gearmotors and Gear Products

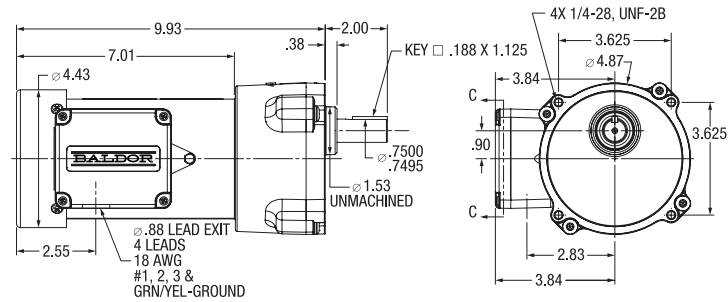
Motor Accessories

Grinders

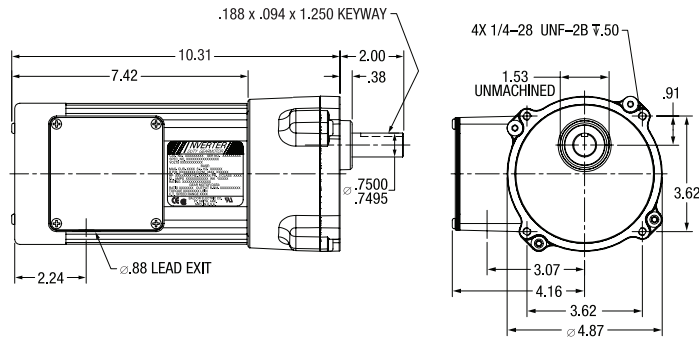
9. 25 - PSLH
3 & 4 STAGES



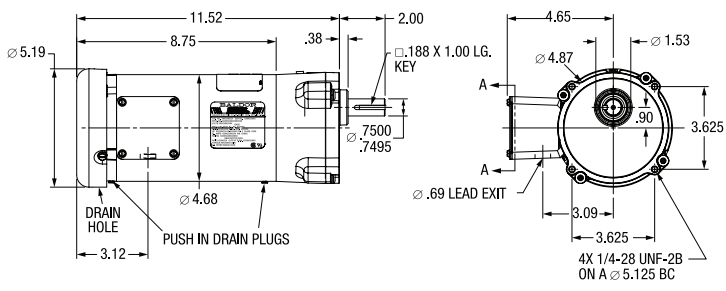
10. 25 - PSL
3 STAGES



11. 25 - PSL
ALUMINUM FRAME



12. 33 - PSL
2 STAGES



Permanent Magnet DC

Output RPM 50/60 Hz.	Max. Safe Torque In. lbs.	Input Hp	Ratio:1	OHL (lbs)	Catalog Number ^(a)	List Price	Mult. Sym.	Ap'x. Shpg. Wgt.	Motor Type & Gear Style	Voltage D.C. Armature	Full Load Amperage Armature	Notes ^(b)	Drawing Number
90 VDC													
8	330	1/8	300	200	GPP7459	875	DS	13	2416P-PSL	90	1.30	20	1
10	330	1/8	240	200	GPP7462	875	DS	13	2416P-PSL	90	1.30	20	1
14	365	1/4	180	200	GPP7458	875	DS	15	2424P-PSL	90	2.50	20	1
21	365	1/4	120	200	GPP7457	875	DS	15	2424P-PSL	90	2.50	20	1
28	390	1/4	90	200	GPP7461	875	DS	15	2424P-PSL	90	2.50	20	1
42	280	1/4	60	200	GPP7456	840	DS	14	2424P-PSL	90	2.50	20	1
50	250	1/4	50	200	GPP7460	840	DS	14	2424P-PSL	90	2.50	20	1
62	200	1/4	40	300	GPP7455	840	DS	14	2424P-PSL	90	2.50	20	1
83	150	1/4	30	300	GPP7454	840	DS	14	2424P-PSL	90	2.50	20	1
58	320	1/3	30	300	GPP2530	1,146	DS	24	2532P-PSLH	90	3.20	20	3
83	337	1/2	30	300	GPP3340	1,288	DS	31	3327P-PSLH	90	5.00	20	4
125	100	1/4	20	300	GPP7453	772	DS	13	2424P-PSL	90	2.50	20	2
165	75	1/4	15	300	GPP7452	772	DS	13	2424P-PSL	90	2.50	20	2
113	164	1/3	15	300	GPP2534	1,091	DS	24	2532P-PSLH	90	3.20	20	3
167	171	1/2	15	300	GPP3344	1,232	DS	31	3327P-PSLH	90	5.00	20	4
250	50	1/4	10	300	GPP7451	772	DS	13	2424P-PSL	90	2.50	20	2
500	25	1/4	5	300	GPP7450	772	DS	13	2424P-PSL	90	2.50	20	2
345	55	1/3	5	300	GPP2538	1,091	DS	24	2532P-PSLH	90	3.20	20	3
500	57	1/2	5	300	GPP3348	1,232	DS	31	3327P-PSLH	90	5.00	20	4
180 VDC													
8	330	1/8	300	200	GPP7479	875	DS	14	2416P-PSL	180	0.70	20	1
14	365	1/4	180	200	GPP7478	875	DS	17	2424P-PSL	180	1.30	20	1
21	365	1/4	120	200	GPP7477	875	DS	15	2424P-PSL	180	1.30	20	1
42	280	1/4	60	200	GPP7476	840	DS	14	2424P-PSL	180	1.30	20	1
62	200	1/4	40	300	GPP7475	840	DS	14	2424P-PSL	180	1.30	20	1
83	155	1/4	30	300	GPP7474	840	DS	14	2424P-PSL	180	1.30	20	1
58	320	1/3	30	300	GPP3370	1,288	DS	31	3327P-PSLH	180	1.60	20	4
83	337	1/2	30	300	GPP3380	1,288	DS	31	3327P-PSLH	180	2.40	20	4
125	100	1/4	20	300	GPP7473	772	DS	13	2424P-PSL	180	1.30	20	2
165	75	1/4	15	300	GPP7472	772	DS	13	2424P-PSL	180	1.30	20	2
115	164	1/3	15	300	GPP3374	1,232	DS	31	3327P-PSLH	180	1.60	20	4
167	171	1/2	15	300	GPP3384	1,232	DS	31	3327P-PSLH	180	2.40	20	4
250	50	1/4	10	300	GPP7471	772	DS	13	2424P-PSL	180	1.30	20	2
500	25	1/4	5	300	GPP7470	772	DS	13	2424P-PSL	180	1.30	20	2
345	55	1/3	5	300	GPP3378	1,232	DS	31	3327P-PSLH	180	1.60	20	4
500	57	1/2	5	300	GPP3388	1,232	DS	31	3327P-PSLH	180	2.40	20	4

(a) Vertical motor below gearhead not recommended.

Avoiding those positions where the high speed oil seal is immersed in oil, will provide greater security against high speed input seal wear.

(b) See notes on inside back flap.

ATTENTION: Additional ratios, voltages, and ratings are available. Application specific modifications are common, such as custom shaft dimensions, addition of brakes or encoders, specific power cords, and washdown features. Contact your local Baldor representative for assistance.

**“L” Type
Mounting Brackets**



Applications: Mounting bracket for PSSH and PSL gearmotors. Securely mounts to gear face in 90 degree locations for floor, wall or ceiling mount. Catalog Number LB74 is not recommended for PSL/PSLH units weighing over 20 lbs. For units weighing more than 20 lbs. use Catalog Number LB75.

Catalog Number	Gearhead Style	List Price	Mult. Sym.	Color	Ap'x. Shpg. Wgt
LB73	PSSH	49	A8	Black	2
LB74	PSL	69	A8	Black	2
LB75	PSL/PSLH	96	A8	Black	7
LB73GR	PSSH	49	A8	Baldor Grey	2
LB74GR	PSL	69	A8	Baldor Grey	2
LB75GR	PSL/PSLH	96	A8	Baldor Grey	7

Definite Purpose Motors

Unit Handling Motors

Brake Motors

IEC Frame Motors

50 Hertz Motors

Inverter/Vector Motors & Controls

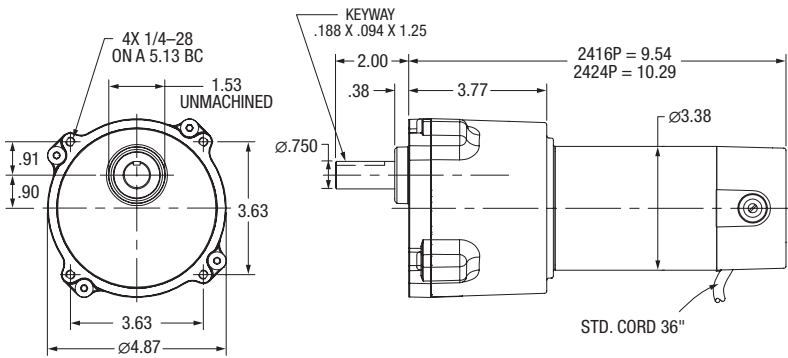
DC Motors and Controls

Gearmotors and Gear Products

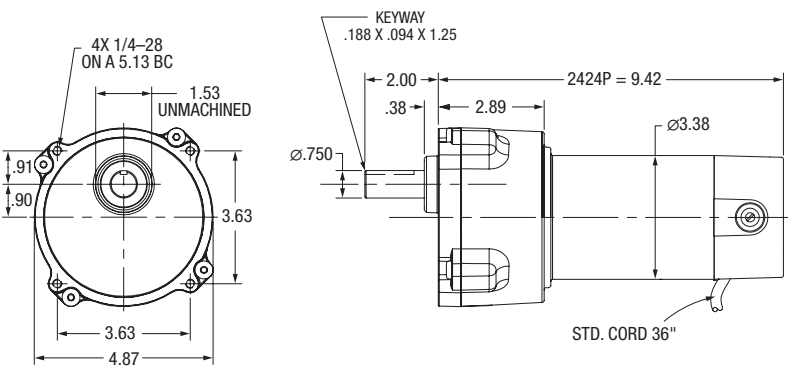
Motor Accessories

Grinders

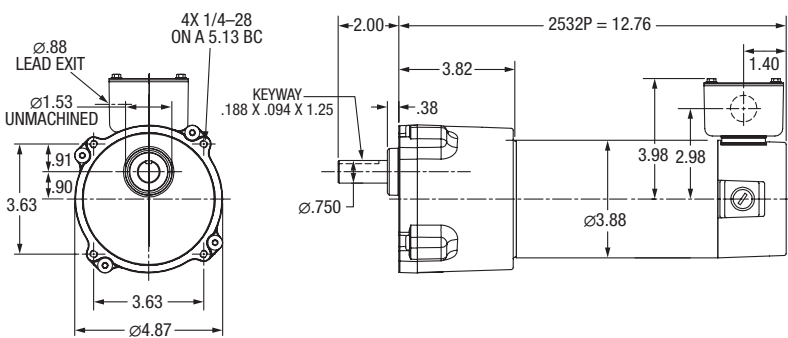
1. 24 - PSL 3 & 4 STAGES



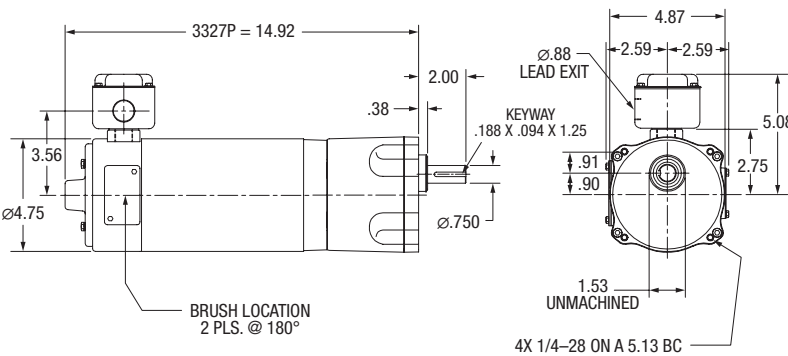
2. 24 - PSL 2 STAGES



3. 25 - PSLH 3 & 2 STAGES



4. 33 - PSLH 2 & 3 STAGES





Features:

- Induction hardened helical and spur gears for efficient torque transmission
- All needle bearing construction for increased torque and overhung load capabilities
- Baldor exclusive needle bearing oiling channels provide increased bearing life
- Permanently lubricated with synthetic oil for long service life
- Industry standard dimensions for ease of installation

Fixed Speed AC

Output RPM 50/60 Hz.	Max. Safe Torque In. lbs.	Input Hp	Ratio:1	OHL (lbs)	Catalog ^(a) Number	List Price	Mult. Sym.	Ap'x. Shpg. Wgt.	Motor Type & Gear Style	Voltage	Notes ^(b)	Drawing Number
Single Phase - Split Phase												
5	1092	1/6	316	502	GCP12316	1,008	DS	26	3414S-PS12	115/230	19,20	
8	1092	1/6	210	545	GCP12210	1,008	DS	26	3414S-PS12	115/230	19,20	
12	1092	1/4	145	442	GCP12145	1,021	DS	28	3418S-PS12	115/230	19,20	
18	815	1/4	96	395	GCP12096	1,021	DS	28	3418S-PS12	115/230	19,20	
21	690	1/4	82	285	GCP12082	1,021	DS	28	3418S-PS12	115/230	19,20	
40	490	1/3	44	339	GCP12044	1,012	DS	28	3421S-PS12	115/230	19,20	
60	509	1/2	29	326	GCP12029	1,103	DS	30	3424S-PS12	115/230	19,20	
92	327	1/2	19	311	GCP12019	1,103	DS	30	3424S-PS12	115/230	19,20	
131	229	1/2	13	292	GCP12013	1,103	DS	30	3424S-PS12	115/230	19,20	
156	192	1/2	11	282	GCP12011	1,103	DS	30	3424S-PS12	115/230	19,20	
284	105	1/2	6	245	GCP12006	1,103	DS	30	3424S-PS12	115/230	19,20	
Three Phase												
12	1092	1/4	145	442	GMP12145	1100	DS	35	3416M-PS12	208-230/460	33	
18	1076	1/3	96	395	GMP12096	1100	DS	35	3416M-PS12	208-230/460	33	
21	911	1/3	82	285	GMP12082	1100	DS	35	3416M-PS12	208-230/460	33	
40	742	1/2	44	339	GMP12044	1,143	DS	40	3420M-PS12	208-230/460	33	
60	509	1/2	29	326	GMP12029	1,143	DS	40	3420M-PS12	208-230/460	33	
92	327	1/2	19	311	GMP12019	1,143	DS	40	3420M-PS12	208-230/460	33	
131	229	1/2	13	292	GMP12013	1,143	DS	40	3420M-PS12	208-230/460	33	
156	192	1/2	11	282	GMP12011	1,143	DS	40	3420M-PS12	208-230/460	33	
284	105	1/2	6	245	GMP12006	1,143	DS	40	3420M-PS12	208-230/460	33	

Variable Speed AC

Output RPM 50/60 Hz.	Max. Safe Torque In. lbs.	Speed Range (CT)	Input Hp	Ratio:1	OHL (lbs)	Catalog ^(a) Number	List Price	Mult. Sym.	Ap'x. Shpg. Wgt.	Motor Type & Gear Style	Voltage	Notes ^(b)	Drawing Number
Three Phase - Inverter Duty													
12	1092	4 - 18	1/4	145	442	IDGMP12145	1,265	E2	35	3416M-PS12	230	33	
18	1076	6 - 27	1/3	96	395	IDGMP12096	1,265	E2	35	3416M-PS12	230	33	
21	911	7 - 32	1/3	82	285	IDGMP12082	1,265	E2	35	3416M-PS12	230	33	
40	742	13 - 59	1/2	44	339	IDGMP12044	1,314	E2	40	3420M-PS12	230	33	
60	509	20 - 89	1/2	29	326	IDGMP12029	1,314	E2	40	3420M-PS12	230	33	
92	327	30 - 135	1/2	19	311	IDGMP12019	1,314	E2	40	3420M-PS12	230	33	
131	229	44 - 198	1/2	13	292	IDGMP12013	1,314	E2	40	3420M-PS12	230	33	
156	192	52 - 234	1/2	11	282	IDGMP12011	1,314	E2	40	3420M-PS12	230	33	
284	105	96 - 430	1/2	6	245	IDGMP12006	1,314	E2	40	3420M-PS12	230	33	

(a) Vertical motor below gearhead not recommended.

Avoiding those positions where the high speed oil seal is immersed in oil, will provide greater security against high speed input seal wear.

(b) See notes on inside back flap.

ATTENTION: Additional ratios, voltages, and ratings are available. Application specific modifications are common, such as custom shaft dimensions, addition of brakes or encoders, specific power cords, and washdown features. Contact your local Baldor representative for assistance.

Red Catalog Number indicates **NEW** Product.

Define Purpose
Motors

Unit Handling
Motors

Brake Motors

IEC Frame
Motors

50 Hertz
Motors

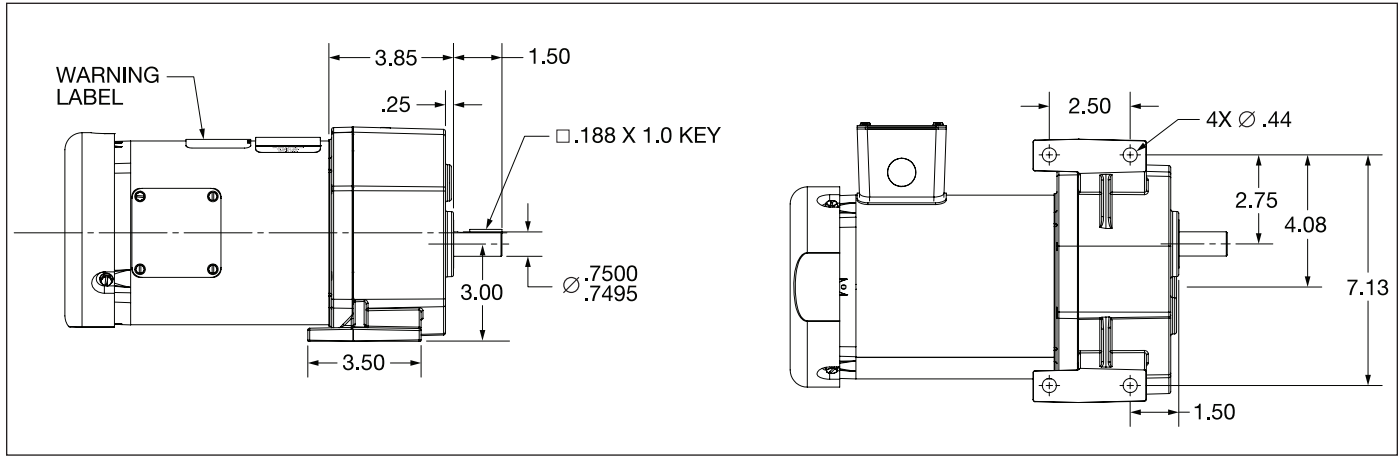
Inverter/Vector
Motors & Controls

DC Motors
and Controls

Gearmotors and
Gear Products

Motor
Accessories

Grinders



Permanent Magnet DC

Output RPM 50/60 Hz.	Max. Safe Torque In. lbs.	Input Hp	Ratio:1	OHL (lbs)	Catalog (a) Number	List Price	Mult. Sym.	Ap'x. Shpg. Wgt.	Motor Type & Gear Style	Voltage D.C. Armature	Full Load Amperage Armature	Notes (b)	Drawing Number
90 VDC													
9	1092	1/6	284	403	GPP129284	1,192	DS	35	XXXXP-PS12	90	1.80	20	
14	934	1/4	173	456	GPP129173	1,206	DS	36	XXXXP-PS12	90	2.50	20	
20	666	1/4	123	460	GPP129123	1,206	DS	36	XXXXP-PS12	90	2.50	20	
43	317	1/4	60	427	GPP129060	1,206	DS	36	XXXXP-PS12	90	2.50	20	
62	231	1/4	40	424	GPP129040	1,176	DS	36	XXXXP-PS12	90	2.50	20	
93	153	1/4	27	357	GPP129027	1,176	DS	36	XXXXP-PS12	90	2.50	20	
148	96	1/4	17	285	GPP129017	1,176	DS	36	XXXXP-PS12	90	2.50	20	
180 VDC													
9	1092	1/6	284	403	GPP128284	1,192	DS	35	XXXXP-PS12	180	1.00	20	
14	934	1/4	173	456	GPP128173	1,206	DS	36	XXXXP-PS12	180	1.30	20	
20	666	1/4	123	460	GPP128123	1,206	DS	36	XXXXP-PS12	180	1.30	20	
43	317	1/4	60	427	GPP128060	1,206	DS	36	XXXXP-PS12	180	1.30	20	
62	231	1/4	40	424	GPP128040	1,176	DS	36	XXXXP-PS12	180	1.30	20	
93	153	1/4	27	357	GPP128027	1,176	DS	36	XXXXP-PS12	180	1.30	20	
148	96	1/4	17	285	GPP128017	1,176	DS	36	XXXXP-PS12	180	1.30	20	

(a) Vertical motor below gearhead not recommended.

Avoiding those positions where the high speed oil seal is immersed in oil, will provide greater security against high speed input seal wear.

(b) See notes on inside back flap.

ATTENTION: Additional ratios, voltages, and ratings are available. Application specific modifications are common, such as custom shaft dimensions, addition of brakes or encoders, specific power cords, and washdown features. Contact your local Baldor representative for assistance.

Definite Purpose Motors

Unit Handling Motors

Brake Motors

IEC Frame Motors

50 Hertz Motors

Inverter/Vector Motors & Controls

DC Motors and Controls

Gearmotors and Gear Products

Motor Accessories

Grinders

**H50 – Right Angle Hollow Shaft –
Worm Gear Reducer**

1.97 thru 50mm CD



H50 Style

Features:

- Oversized output bearings
- Bronze gearing
- Hardened and ground worm
- Internal oil expansion bladder
- Synthetic gear oil lubrication

Applications:

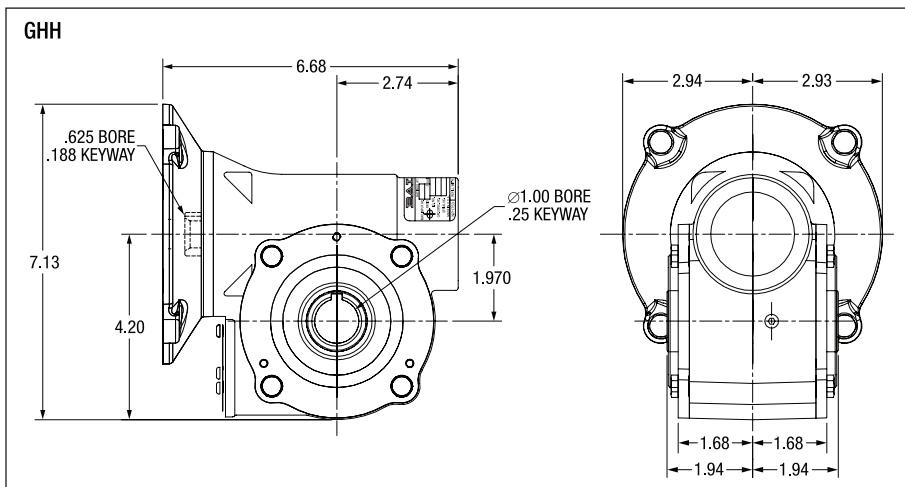
- Conveyors
- Material handling equipment
- Packaging machinery
- Machine tool

Nominal Output RPM @ 1750 RPM In	Gear Ratio	Continuous Duty Output Torque (In-lbs) Based on 1750 RPM Motor						Max Input Hp	Max Output Torque Rating In-lbs	Style Number	Catalog Number	List Price	Mult. Sym.	Ap'x Shpg. Wgt.	
		0.25	0.33	0.5	0.75	1	1.5								2
350	5:1					156	235	315	2.57	435	HF-H-05-H100	GHH0556	641	GB	11
175	10:1				230	300	450		1.88	600	HF-H-10-H100	GHH1056	641	GB	11
117	15:1			176	263	350			1.37	483	HF-H-15-H100	GHH1556	641	GB	11
88	20:1			275	394	550			1	550	HF-H-20-H100	GHH2056	641	GB	11
70	25:1		240	350	529				.83	583	HF-H-25-H100	GHH2556	641	GB	11
58	30:1		247	350	550				.76	562	HF-H-30-H100	GHH3056	641	GB	11
44	40:1	268	345	528					.64	672	HF-H-40-H100	GHH4056	641	GB	11
35	50:1	310	400	609					.56	685	HF-H-50-H100	GHH5056	641	GB	11
29	60:1	300	418	600					.5	600	HF-H-60-H100	GHH6056	641	GB	11

NOTE: Service Class I Torque Ratings (1.0 Service Factor)
 Service Class II Torque Ratings (≥ 1.4 Service Factor)
 Service Class III Torque Ratings (≥ 2.0 Service Factor)

ATTENTION: Additional ratios, ratings and mounting configurations are available. Need a fully assembled gearmotor? Have your reducer and motor coupled by utilizing M34D from the Baldor Mod Express section. Please contact your local Baldor representative for assistance.

Vertical motor below gearhead not recommended.
 Avoiding those positions where the high speed oil seal is immersed in oil, will provide greater security against high speed input seal wear.
 Replacement oil – 1 Qt P/N MJ0006A05SP (Klubersynth UH1-6-460)



H Gearbox Accessories



Baldor offers optional base and shaft kits for H style gearmotors. Adding a base and shaft kit allows them to be used in applications requiring a rightangle shaft extension. The shaft can be used for either right or left hand output applications.

Catalog Number	Description	List Price	Mult. Sym.	Ap'x. Shpg. Wgt.
B19H71	Horiz Base Kit	82	A8	1
SH10HS	Output Shaft Kit	26	A8	2
TA05HK	Torque Arm Kit	125	A8	2

Inline Helical

4 Sizes



Features:

- Heavy duty cast iron construction
- High torque in a compact design
- Clamp collar input connection
- Hardened and ground AGMA class 11 gears
- Synthetic gear oil lubrication

Applications:

- Conveyors
- Material handling
- Textile machines
- Packaging machinery

Nominal RPMs	Continuous Duty Output Torque (in-lbs.) Based on 1750 RPM Motors											Max Input Hp	Max Output Torque Rating In-lbs.	NEMA	Style Number	Catalog Number	List Price	Mult. Sym.	Ap'x. Shpg. Wgt.	
	0.33	0.50	0.75	1	1.5	2	3	5	7.5	10	15									20
180				349	524	698							2.02	705	56C	HB382CN56C-9	GIF0938A	998	GB	29
				524	699	1048							4.86	1698	140TC	HB382CN140TC-9	GIF0938B	998	GB	31
				524	699	1048							4.86	1698	180TC	HB382CN180TC-9	GIF0938C	1,093	GB	32
							1055	1758	2637				8.79	3090	180TC	HB482CN180TC-9	GIF0948C	1,578	GB	55
124													20.17	7067	210TC	HB682CN210TC-9	GIF0968D	2,472	GB	101
				510	766	1021							2.02	1031	56C	HB382CN56C-14	GIF1438A	998	GB	29
				766	1021	1532							3.77	1925	140TC	HB382CN56C-14	GIF1438B	998	GB	31
				1057	1586	2644							6.68	3532	180TC	HB482CN180TC-14	GIF1448C	1,578	GB	55
								2447	3670	4894			10.36	5070	180TC	HB682CN180TC-14	GIF1468C	2,472	GB	93
								2447	3670	4894			14.47	7081	210TC	HB682CN210TC-14	GIF1468D	2,472	GB	101
102													27.6	14540	250TC	HB882CN250TC-14	GIF1488E	3,810	GB	229
				468	623	935							1.84	1147	56C	HB382CN56C-18	GIF1838A	998	GB	29
				936	1248	1872							3.12	1947	140TC	HB382CN140TC-18	GIF1838B	998	GB	31
				1264	1896								4.86	3071	140TC	HB482CN140TC-18	GIF1848B	1,384	GB	54
				1264	1896	3162							5.91	3738	180TC	HB482CN180TC-18	GIF1848C	1,578	GB	85
							1776	2961	4441				9.95	5892	180TC	HB682CN180TC-18	GIF1868C	2,472	GB	93
							2963	4444	5926				11.95	7081	210TC	HB682CN210TC-18	GIF1868D	2,472	GB	101
70													23.91	14870	250TC	HB882CN250TC-18	GIF1888E	3,810	GB	229
				440	660	880							1.41	1241	56C	HB382CN56C-25	GIF2538A	998	GB	29
				881	1321	1762							2.21	1947	140TC	HB382CN140TC-25	GIF2538B	998	GB	31
				1435	1913	2869							3.92	3749	140TC	HB482CN140TC-25	GIF2548B	1,384	GB	54
				1910	2865								4.17	3983	180TC	HB482CN180TC-25	GIF2548C	1,578	GB	55
							2759	4598	6897				7.70	7081	180TC	HB682CN180TC-25	GIF2568C	2,472	GB	93
								6755	9007	13510			16.51	14870	210TC	HB882CN210TC-25	GIF2588D	3,589	GB	178
								6755	9007	13510			16.51	14870	250TC	HB882CN250TC-25	GIF2588E	3,810	GB	229
44	465	705	1057										0.95	1339	56C	HB382CN56C-40	GIF4038A	998	GB	29
	746	1118	1491										1.12	1670	56C	HB482CN56C-40	GIF4048A	1,384	GB	52
				1486	2229	2972							2.68	3983	140TC	HB482CN140TC-40	GIF4048B	1,384	GB	54
				2718	4077	6796							5.21	7081	180TC	HB682CN180TC-40	GIF4068C	2,472	GB	93
33													11.08	14870	210TC	HB882CN210TC-40	GIF4088D	3,589	GB	178
	691	1047	1570										0.93	1947	56C	HB383CN56C-56	GIF5638A	1,205	GB	29
				1509	2012	3017							1.98	3983	56C	HB483CN56C-56	GIF5648A	1,518	GB	52
				2601	3468	5203							3.04	5272	140TC	HB682CN140TC-50	GIF5068B	2,279	GB	92
						3655	5483	9138					5.58	10198	180TC	HB882CN180TC-50	GIF5088C	3,589	GB	178

NOTE: Service Class I Torque Ratings (1.0 Service Factor)
 Service Class II Torque Ratings (≥ 1.4 Service Factor)
 Service Class III Torque Ratings (≥ 2.0 Service Factor)

ATTENTION: Additional ratios, ratings and mounting configurations are available. Please contact your local Baldor representative for assistance.