

**BALDOR • RELIANCE**



## **Gearmotors & Speed Reducers**



**BALDOR**  
A MEMBER OF THE ABB GROUP

Any product is only as good as its individual components. Starting with careful attention to detail in the engineering stage and continuing through the selection of materials and manufacturing processes, each component is designed to stand up in rugged industrial applications.



Die cast housings are produced in our own facility. Machined on

precision CNC machining centers and checked on state-of-the-art measuring equipment, these housing provide rigid support and accurate alignment of the gears.



All motors are ball bearing type, rated for industrial duty. These motors, both AC and DC, are constructed from precision machined components and are dynamically balanced for smooth quiet operation.

Outside surfaces are protected by a durable heat cured dry powder coating which is FDA approved for food processing applications.



Continuing education and training helps our people maintain the highest standards of quality. From initial design through final test, our employees are dedicated to building the best product possible.

Over 300 stock ratings are available from Baldor district offices and distributors across the country. Thousands of custom combinations can be assembled from a wide range of standard ratios, motors, and mountings. Baldor sales and engineering personnel are available to help solve your application problems.



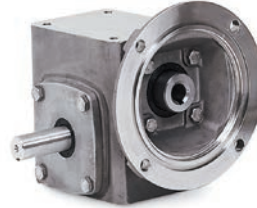
## Worm Gear Reducers



Standard finish



Washdown epoxy



Washdown stainless steel

## Inline Helical



## Universal Series



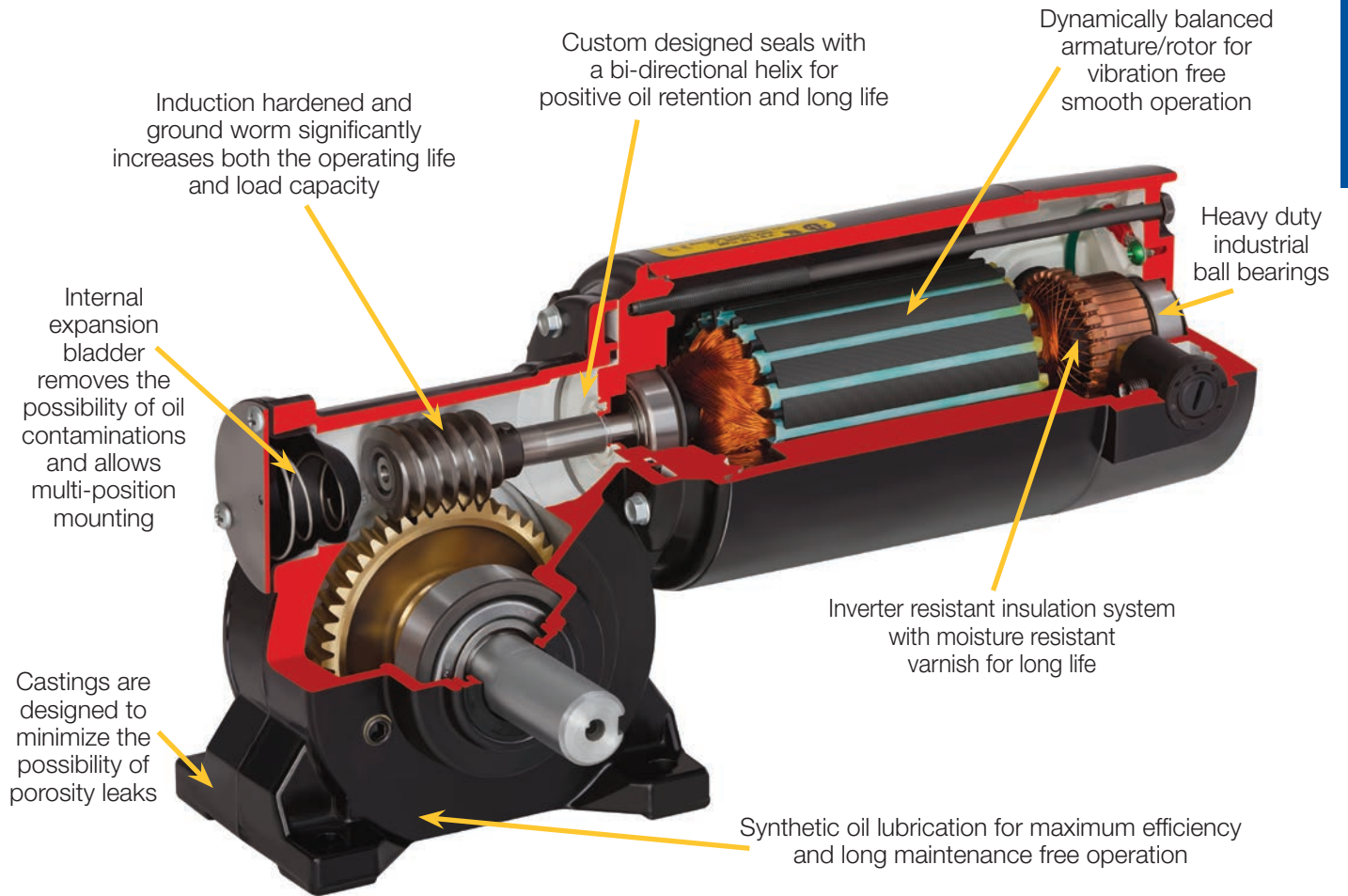
## Ratio Multipliers



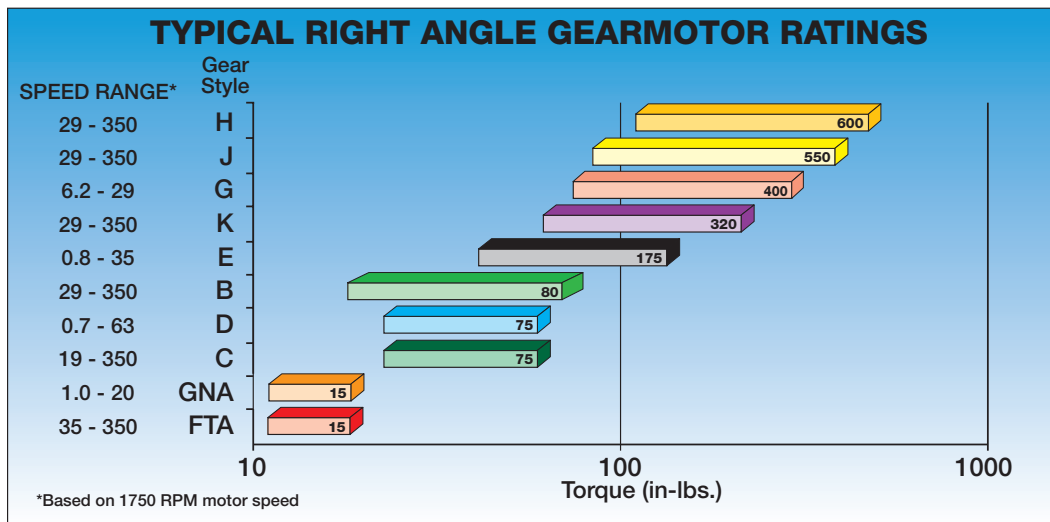
## Gearmotors



## Right Angle Gearmotors Features and Benefits



\* Vertical motor below gearhead not recommended.





## Single Reduction Worm Gearmotors



**Style FTA**

- Hardened and ground steel worm provides quiet operation and long life
- Factory lubricated for life, no routine maintenance is required
- Double 5/16" output shafts provides mounting flexibility
- AC & DC ratings up to 1/20 hp
- Torque ratings to 15 in-lbs
- Available in 90 VDC, 115 or 230/460 VAC, and 230 VAC Inverter Duty



**Style B**

- Hardened and ground steel worm provides quiet operation and long life
- Factory lubricated for life with synthetic oil
- Baldor's exclusive internal oil expansion bladder. Keeps lubrication in and contamination out
- Double 1/2" output shafts provides mounting flexibility
- AC & DC ratings up to 1/6 hp
- Torque ratings to 80 in-lbs
- Available in 90 or 180 VDC, 115 or 230/460 VAC, and 230 VAC Inverter Duty



**Style C**

- Hardened and ground steel worm provides quiet operation and long life
- Factory lubricated for life with synthetic oil
- Baldor's exclusive internal oil expansion bladder. Keeps lubrication in and contamination out
- Double 1/2" output shafts provides mounting flexibility
- AC & DC ratings up to 1/4 hp
- Torque ratings to 75 in-lbs
- Available in 90 or 180 VDC and 115 or 230/460 VAC



**Style K**

- Hardened and ground steel worm provides quiet operation and long life
- Factory lubricated for life with synthetic oil
- Baldor's exclusive internal oil expansion bladder. Keeps lubrication in and contamination out
- Single 5/8" output shaft has both keyway and flat
- AC & DC ratings up to 1/2 hp
- Torque ratings to 320 in-lbs
- Available in 90 or 180 VDC, 115 or 230/460 VAC, and 230 VAC Inverter Duty



**Style J**

- Hardened and ground steel worm provides quiet operation and long life
- Factory lubricated for life with synthetic oil
- Baldor's exclusive internal oil expansion bladder. Keeps lubrication in and contamination out
- Double 3/4" output shafts provides mounting flexibility
- AC & DC ratings up to 1/2 hp
- Torque ratings to 550 in-lbs
- Available in 90 or 180 VDC, 115 or 230/460 VAC, and 230 VAC Inverter Duty

**NOTE:** Vertical motor below gearhead not recommended. Avoiding those positions where the high speed oil seal is immersed in oil, will provide greater security against high speed input seal wear.



**Style H**

- Hardened and ground steel worm provides quiet operation and long life
- Ratios from 5:1 to 60:1
- Factory lubricated for life with Klubersynth UH1-6-460 USDA food grade oil
- Baldor's exclusive internal oil expansion bladder, keeps oil in and contamination out
- Symmetrical, 1.00" hollow through-bore design
- AC & DC ratings up to 1 hp
- Torque ratings to 600 in-lbs

## Double Reduction Worm Gearmotors



**Style GNA**

- Hardened and ground steel worms provides quiet operation and long life
- Ratios from 88:1 to 1600:1
- Double 5/16" output shafts provides mounting flexibility
- AC & DC ratings up to 1/97 hp
- Torque ratings to 15 in-lbs
- Available in 90 VDC



**Style D**

- Hardened and ground steel worms provides quiet operation and long life
- Ratios from 27.4:1 to 2500:1
- Factory lubricated for life with Mobil SHC 634 synthetic oil
- Baldor's exclusive internal oil expansion bladder. Keeps lubrication in and contamination out
- Double 1/2" output shafts provides mounting flexibility
- AC & DC ratings up to 120 hp
- Torque ratings to 75 in-lbs
- Available in 90 or 180 VDC, 115 VAC and 230 VAC Inverter Duty



**Style E**

- Hardened and ground steel worms provides quiet operation and long life
- Ratios from 50:1 to 2000:1
- Factory lubricated for life with Mobil SHC 634 synthetic oil
- Baldor's exclusive internal oil expansion bladder. Keeps lubrication in and contamination out
- Double 5/8" output shafts provides mounting flexibility
- AC & DC ratings up to 1/4 hp
- Torque ratings to 175 in-lbs
- Available in 90 or 180 VDC, 115 or 230/460 VAC, and 230 VAC Inverter Duty

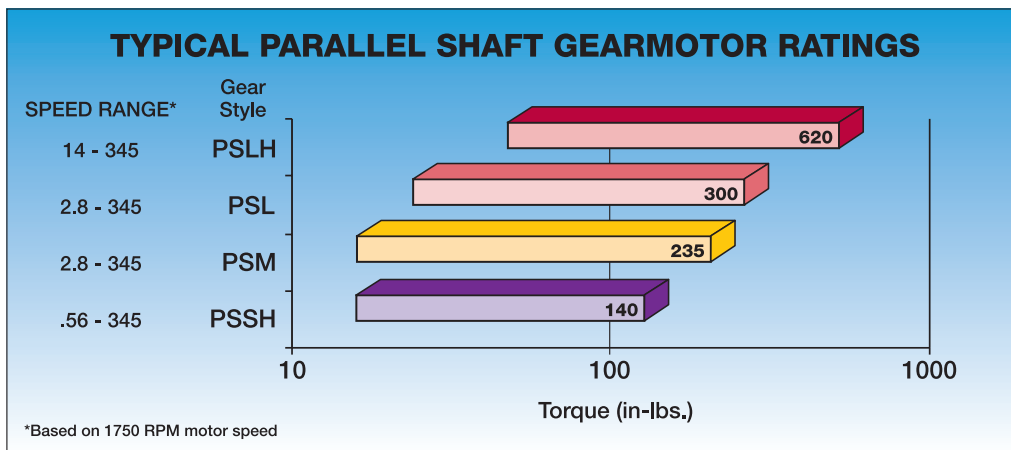
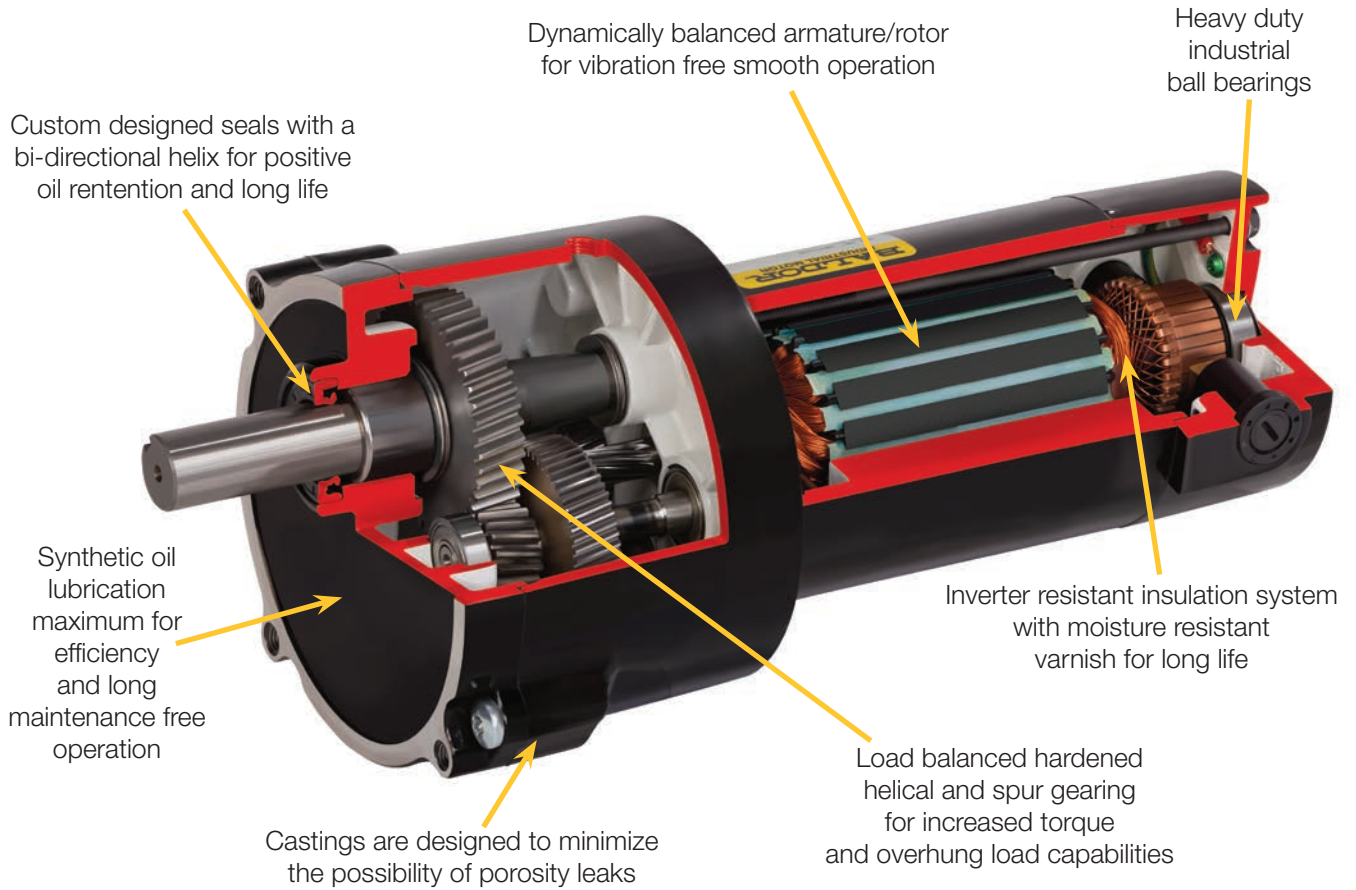


**Style G**

- Hardened and ground steel worm with bronze gear for strength and long life
- Hardened helical output gear provides quiet, high-torque transmission
- Ratios from 60:1 to 280:1
- Factory lubricated for life with synthetic oil
- Single 3/4" output shaft with keyway
- AC & DC ratings up to 1/8 hp
- Available in 90 or 180 VDC, 115 or 230/460 VAC, and 230 VAC Inverter Duty

**NOTE:** Vertical motor below gearhead not recommended. Avoiding those positions where the high speed oil seal is immersed in oil, will provide greater security against high speed input seal wear.

## Parallel Shaft Gearmotors



## Parallel Shaft Gearmotors



**Style PSSH**

- Induction hardened helical and spur gears for extra strength
- Ball and needle bearing construction for improved torque capacity
- Factory lubricated for life with synthetic oil
- Output shaft is 1/2" diameter
- Industry standard mounting dimensions
- AC & DC ratings up to 1/4 hp
- Ratios from 5:1 to 3125:1
- Torque ratings to 140 in-lbs
- Available in 90 or 180 VDC, 115 VAC and 230 VAC Inverter Duty
- Additional bases for greater mounting flexibility available



**Style PSM**

- Induction hardened helical and spur gears for extra strength
- Ball and needle bearing construction for improved torque capacity
- Factory lubricated for life with synthetic oil
- Output shaft is 5/8" diameter
- Industry standard mounting dimensions
- AC & DC ratings up to 1/8 hp
- Ratios from 5:1 to 625:1
- Torque ratings to 235 in-lbs
- Available in 90 or 180 VDC, 115 VAC and 230 VAC Inverter Duty
- Additional bases for greater mounting flexibility available



**Style PSL**

- Induction hardened helical gears for extra strength
- Ball and needle bearing construction for improved torque capacity
- Factory lubricated for life with synthetic oil
- Output shaft is 3/4" diameter
- Industry standard mounting dimensions
- AC & DC ratings up to 1/2 hp
- Ratios from 5:1 to 625:1
- Torque ratings to 620 in-lbs
- Available in 90 or 180 VDC, 115 VAC or 230/460 VAC, and 230 VAC Inverter Duty
- Additional bases for greater mounting flexibility available

**Style PSLH**

**NOTE:** Vertical motor below gearhead not recommended. Avoiding those positions where the high speed oil seal is immersed in oil, will provide greater security against high speed input seal wear.





## 900 Series Speed Reducers

Over 350 models in stock, a 24-hour Quick Ship program on most popular non-stock items, and 36 warehouses throughout North America – Baldor gives you the features you want, where and when you want them.

### Specifications

- Nine center distances
- Fractional through 15 horsepower
- Output torque ratings up to 3200 inch pounds – single reduction
- Solid and hollow output shaft designs
- Single reduction ratios from 5:1 to 60:1  
Double reduction from 75:1 to 3600:1
- Standard NEMA C-face quill or coupled input as well as solid worm type input
- Adapter kits available to convert two stock single stage units into a double reduction unit

### Features

- Dimensionally interchangeable with major U.S. manufacturers
- Chill cast precision hobbed tin bronze gear provides superior wear characteristics
- Carburized and ground worm provides optimum efficiency and cool quiet operation
- Plunge ground seal journals for optimum seal life
- Completely sealed and lubricated for life with USDA H1 food grade oil providing years of trouble-free operation



## Inline Helical

Baldor's ILH Gearboxes are engineered for flexibility, greater torque density in compact housing configuration, and increased horsepower capability

### Specifications

- Fractional through 75 horsepower
- Output torque range 116 in-lbs – 123914 in-lbs
- Ratio range 1.41:1 – 359:1
- Foot mount and output flange models
- Standard NEMA C-face and projecting input shaft models
- NEMA 56C – 360TC  
IEC 71D – 250D



## Universal Series Speed Reducers

Baldor's Universal Series Reducers boast a robust cast iron construction with integrated mounting feet eliminating the need for bolt on bases.

### Specifications

- Ten center distances
- Fraction through 28.5 Hp
- Output torque ratings:  
Up to 30,000 inch pound - single reduction  
Up to 22,500 inch pound - double reduction
- Solid output shaft design only
- Single reduction ratios from 5:1 to 60:1  
Double reduction from 75:1 to 3600:1
- Standard NEMA C-face quill or coupled input as well as solid worm type input
- Adapter kits available to convert two stock single stage units into a double reduction unit.

### Features

- Integral cast mounting feet
- Chill cast precision hobbed tin bronze gear provides superior wear characteristics
- Carburized and ground worm provides optimum efficiency and cool quiet operation
- Plunge ground seal journals for optimum seal life
- Completely sealed and lubricated for life with USDA H1 food grade synthetic oil which ensures years of trouble-free operation

### Features

- Dimensionally interchangeable with other major manufacturers
- Standard NEMA c-face input accepts standard motors
- Accessible oil seals for easy routine maintenance
- All sizes can be double sealed on the high speed shaft for severe applications
- Oversized bearings for high overhung load ratings
- Rugged high quality cast iron housings





## 900 Series All Stainless Steel Speed Reducers

Baldor's all stainless steel speed reducers are easy to clean and sanitize, minimizing bacterial contamination for food processing equipment. Stainless steel provides the highest protection for pharmaceutical and chemical processing applications where harsh chemicals and cleaning solutions can be extremely corrosive to aluminum, cast iron and other materials.

### Specifications

- Three center distances: 1.75, 2.06, 2.62 and 3.25
- Fractional through 5 Hp
- Solid and hollow output with torque ratings up to 2255 inch pounds
- Single and double reduction ratios available
- Standard NEMA C-Face Quill input

### Features

- Smooth 316 stainless steel finish minimizes the chance for bacteria growth. Excellent corrosion resistance, especially where bleach solutions may be used
- 300 Series Stainless Steel output shaft and stainless hardware provides superior corrosion resistance
- O-ring sealed housing insures that all entry points are completely sealed prevention ingress of water or other contaminants, extending service life
- Completely sealed and lubricated for life with USDA H1 food grade oil. Providing years of trouble-free operation.

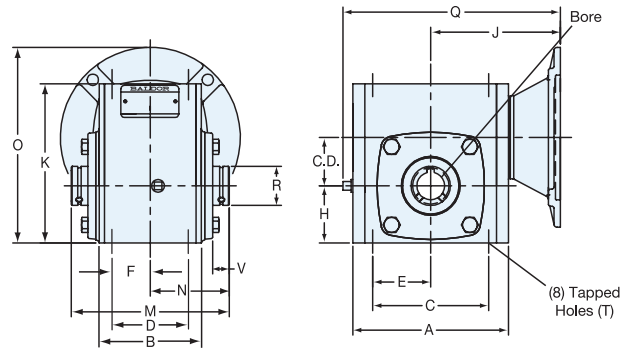
## Ratio Multipliers

Single stage parallel shaft reducers (or speed increasers) are available from stock with NEMA C-face input and output. They increase output torque, double reduction capacity and offer greater flexibility of inventory.

- Increases torque and efficiency
- Ratings up to 10 horsepower
- Pre-Fill at the factory
- Accept NEMA 56C or 140TC input
- Bolts to any NEMA 56C or 140TC Reducer
- 4 Ratios Available

| Ratio | Size | Output RPM @ 1750 RPM In | Input Hp | Output Torque In. Lbs. |
|-------|------|--------------------------|----------|------------------------|
| 2     | 1    | 875                      | 2.00     | 141                    |
| 3     | 1    | 583                      | 1.65     | 175                    |
| 4     | 1    | 438                      | 1.38     | 195                    |
| 5     | 1    | 350                      | 1.10     | 194                    |
| 2     | 2    | 875                      | 12.42    | 877                    |
| 3     | 2    | 583                      | 8.68     | 911                    |
| 4     | 2    | 438                      | 6.36     | 885                    |
| 5     | 2    | 350                      | 5.40     | 431                    |
| 5     | 2    | 350                      | 5.40     | 431                    |

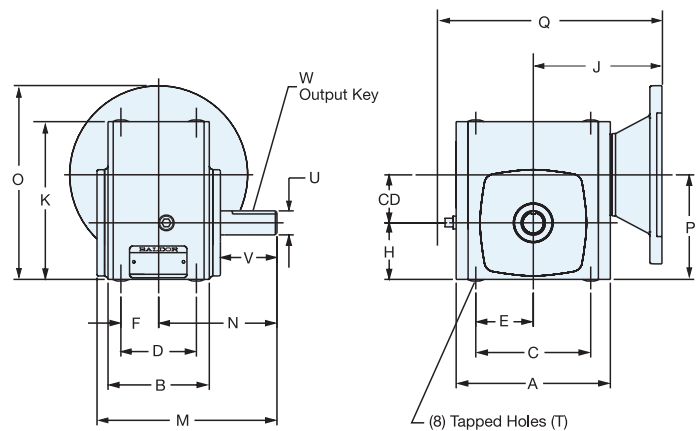
# Stainless Steel Style SSHF Hollow Output Shaft



| Size | C.D. | A    | B    | C    | D    | E    | F    | H    | J            |       | K    | M    | N    | O            |       | P    |
|------|------|------|------|------|------|------|------|------|--------------|-------|------|------|------|--------------|-------|------|
|      |      |      |      |      |      |      |      |      | 56C<br>140TC | 180TC |      |      |      | 56C<br>140TC | 180TC |      |
| 918  | 1.75 | 5.62 | 3.69 | 4.19 | 2.75 | 2.09 | 1.38 | 2.06 | 4.69         | —     | 5.75 | 5.70 | 2.85 | 7.12         | —     | 3.81 |
| 921  | 2.06 | 6.13 | 3.83 | 5.00 | 2.88 | 2.50 | 1.44 | 2.28 | 5.06         | —     | 6.38 | 6.44 | 3.22 | 7.65         | —     | 4.34 |
| 926  | 2.62 | 7.45 | 4.44 | 6.38 | 3.38 | 3.19 | 1.69 | 2.94 | 5.75         | 6.19  | 8.00 | 6.88 | 3.44 | 8.87         | 10.19 | 5.56 |
| 932  | 3.25 | 9.00 | 5.88 | 7.50 | 4.00 | 3.75 | 2.00 | 3.50 | 6.57         | 7.00  | 9.38 | 8.50 | 4.25 | 10.06        | 11.38 | 6.75 |

| Size | Q            |       | T        |       | Output Shaft |       |       |       | W-Key |        | Approximate<br>Weight<br>Lbs. | Approximate<br>Oil Capacity<br>oz. |
|------|--------------|-------|----------|-------|--------------|-------|-------|-------|-------|--------|-------------------------------|------------------------------------|
|      | 56C<br>140TC | 180TC | Tap Size | Depth | R            | Bore  |       | V     | Sq.   | Length |                               |                                    |
|      |              |       |          |       |              | Std.  | Max.  |       |       |        |                               |                                    |
| 918  | 7.85         | —     | 0.312-18 | 0.59  | 1.42         | 1.000 | 1.125 | .60   | 0.250 | 1.625  | 31                            | 14.0                               |
| 921  | 8.63         | —     | 0.375-16 | 0.69  | 1.73         | 1.250 | 1.250 | .63   | 0.250 | 1.625  | 36                            | 17.5                               |
| 926  | 9.90         | 10.34 | 0.375-16 | 0.69  | 2.56         | 1.438 | 2.000 | .63   | 0.375 | 1.500  | 59                            | 32.0                               |
| 932  | 13.42        | 13.85 | 0.438-14 | 0.938 | 2.76         | 1.938 | 2.125 | 1.312 | 0.500 | 2.250  | 100                           | 67.0                               |

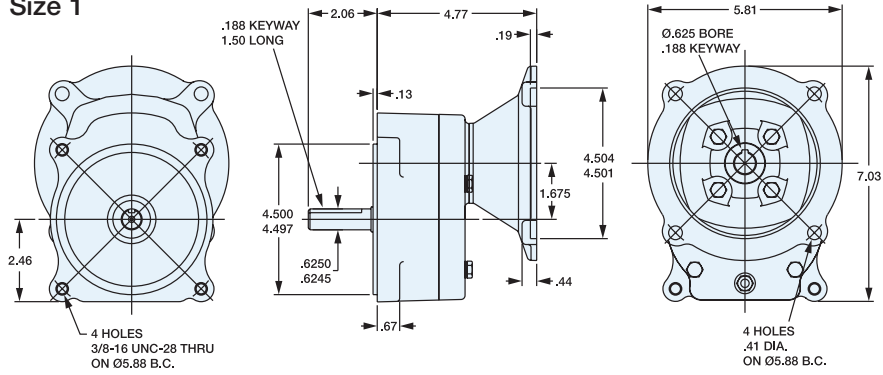
# Stainless Steel Style SSF Basic



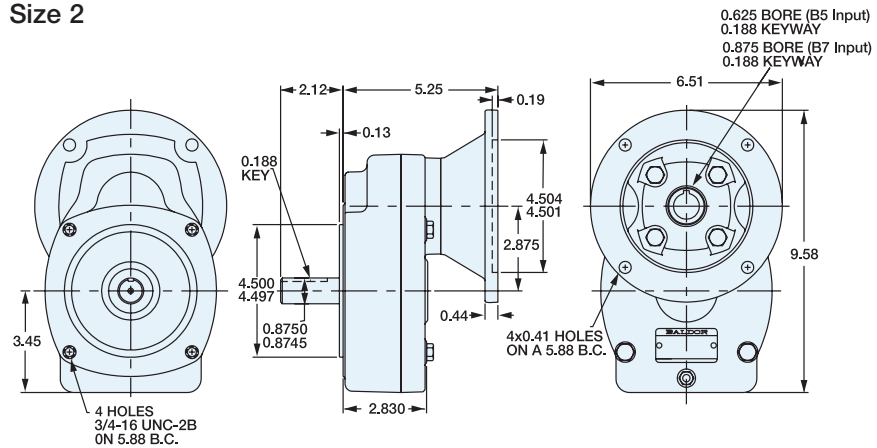
| Size | C.D. | A    | B    | C    | D    | E    | F    | H    | J            |       | K    | M     | N    | O            |       | P    |
|------|------|------|------|------|------|------|------|------|--------------|-------|------|-------|------|--------------|-------|------|
|      |      |      |      |      |      |      |      |      | 56C<br>140TC | 180TC |      |       |      | 56C<br>140TC | 180TC |      |
| 918  | 1.75 | 5.56 | 3.69 | 4.19 | 2.75 | 2.09 | 1.38 | 2.06 | 4.69         | —     | 5.75 | 6.78  | 4.31 | 7.12         | —     | 3.81 |
| 921  | 2.06 | 6.06 | 3.81 | 5.00 | 2.88 | 2.50 | 1.44 | 2.28 | 5.07         | —     | 6.38 | 7.22  | 4.69 | 7.65         | —     | 4.34 |
| 926  | 2.62 | 7.38 | 4.44 | 6.38 | 3.38 | 3.19 | 1.69 | 2.94 | 5.75         | 6.19  | 8.00 | 8.50  | 5.62 | 8.87         | 10.19 | 5.56 |
| 932  | 3.25 | 9.00 | 5.88 | 7.50 | 4.00 | 3.75 | 2.00 | 3.50 | 6.57         | 7.00  | 9.38 | 10.69 | 7.06 | 10.06        | 11.38 | 6.75 |

| Size | Q            |       | T        |       | Output Shaft          |      | W-Key |        | Approximate<br>Weight<br>Lbs. | Approximate<br>Oil Capacity<br>oz. |
|------|--------------|-------|----------|-------|-----------------------|------|-------|--------|-------------------------------|------------------------------------|
|      | 56C<br>140TC | 180TC | Tap Size | Depth | U<br>+0.000<br>-0.001 | V    | Sq.   | Length |                               |                                    |
| 918  | 7.85         | —     | 0.312-18 | 0.59  | 0.875                 | 2.06 | 0.188 | 1.00   | 30                            | 14.0                               |
| 921  | 8.63         | —     | 0.375-16 | 0.59  | 1.000                 | 2.38 | 0.250 | 1.25   | 36                            | 17.5                               |
| 926  | 9.90         | 10.34 | 0.375-16 | 0.69  | 1.125                 | 2.78 | 0.250 | 2.00   | 56                            | 32.0                               |
| 932  | 13.42        | 13.85 | 0.438-14 | 0.938 | 1.375                 | 3.44 | 0.313 | 2.500  | 100                           | 67.0                               |

**Size 1**



**Size 2**

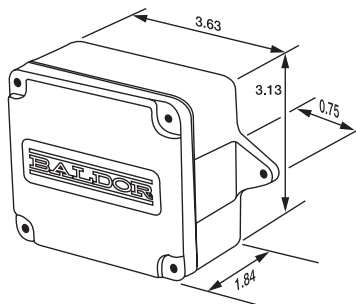


**Gearmotor Accessories**



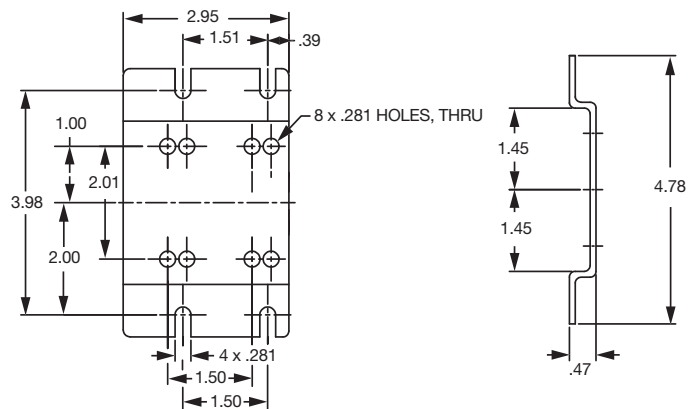
**BKP2400 Conduit Box**

BKP2400 is an optional combination conduit/capacitor mounting kit. This box may be use with stock 24 frame AC motors and Gearmotors.



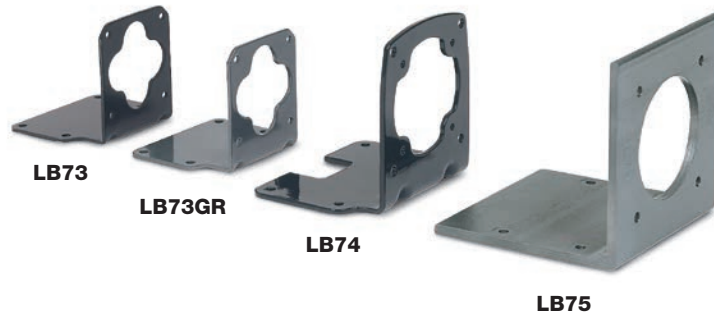
**B92 Base**

B92 is a formed steel-mounting base that bolts to the bottom of the PSM gearbox casting. Provides secure foot mounting and drop-in interchangeability with other manufacturers.





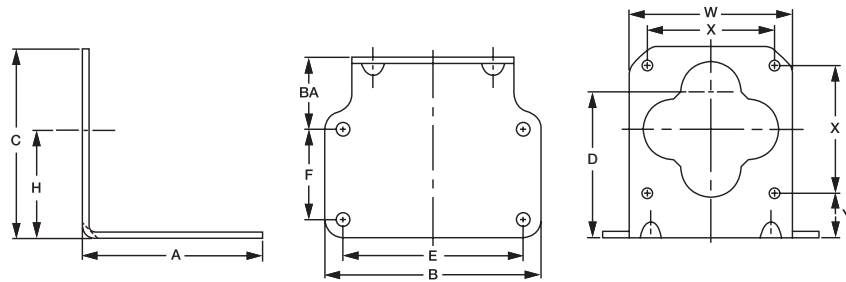
## Gearmotor Accessories



**LB73 & LB73GR** are “L” type mounting brackets used with the PSSH gearmotor. Securely mounts to gear face in a 90 degree locations for floor, wall or ceiling mount. **LB73** is painted black to match stock DC motor while **LB74GR** is painted gray to match our AC line.

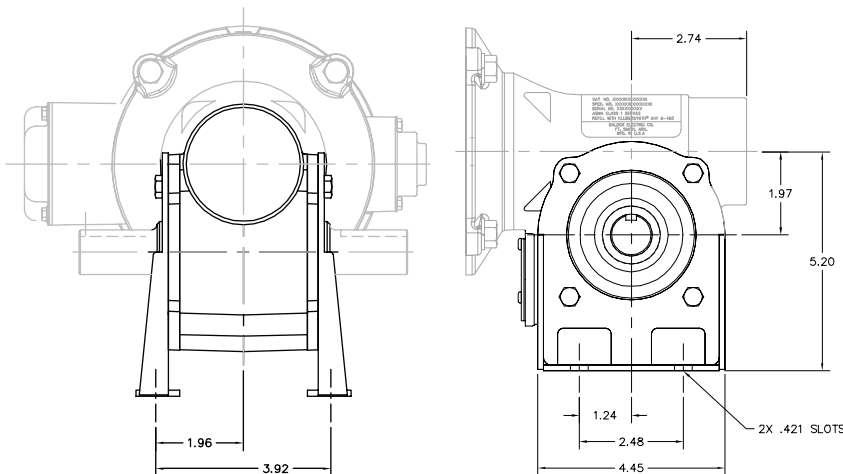
**LB74** “L” type mounting brackets used with the PSL and PSLH gearmotor. Securely mounts to gear face in a 90 degree locations for floor, wall or ceiling mount. **LB74** is not recommended for units weighing over 20 lbs.

**LB75** “L” type mounting brackets used with the PSL and PSLH gearmotor. Securely mounts to gear face in a 90 degree locations for floor, wall or ceiling mount. **LB75** is recommended for units weighing over 20 lbs.



|      | <b>A</b> | <b>B</b> | <b>C</b> | <b>D</b> | <b>E</b> | <b>F</b> | <b>H</b> | <b>BA</b> | <b>W</b> | <b>X</b> | <b>Y</b> |
|------|----------|----------|----------|----------|----------|----------|----------|-----------|----------|----------|----------|
| LB73 | 3.75     | 4.50     | 3.94     | 3.03     | 3.75     | 1.88     | 2.25     | 1.50      | 3.40     | 2.65     | 0.93     |
| LB74 | 4.50     | 6.00     | 5.45     | 4.00     | 5.00     | 2.50     | 3.10     | 1.50      | 4.63     | 3.62     | 1.28     |
| LB75 | 6.00     | 6.00     | 6.00     | 4.00     | 5.00     | 2.50     | 3.10     | 1.50      | 6.00     | 3.62     | 1.28     |

## H Gearbox Accessories



Baldor offers optional base and shaft kits for H style gearmotors. Adding a base and shaft kit allows them to be used in applications requiring a right-angle shaft extension. The shaft can be used for either right or left hand output applications.

| <b>Catalog Number</b> | <b>Description</b> | <b>List Price</b> | <b>Mult. Sym.</b> | <b>Ap'x. Shpg. Wgt.</b> |
|-----------------------|--------------------|-------------------|-------------------|-------------------------|
| <b>B19H71</b>         | Horiz Base Kit     | 67                | A8                | 1                       |
| <b>SH10HS</b>         | Output Shaft Kit   | 21                | A8                | 2                       |



## NEMA Enclosed DC Controls FOR PERMANENT MAGNET OR SHUNT WOUND MOTORS



**BC140 Enclosed  
(NEMA 1)**

Features common to enclosed and chassis mount controls:

- Full wave SCR control with free wheeling diode (NEMA type K) except regen controls.
- Field power supply allows use with shunt wound DC motors as well as permanent magnet motors.
- Adjustable accel, decel, current limit, IR comp, min. and max. speed. Current limit indicating LED.
- 5K speed pot for speed control (remote on chassis mount).
- Kit available for forward/brake/reverse switching (BC140, BC154, BC254 only).
- Horsepower resistor and armature fuse selectable to match control and motor for each application. (Included in price of control).
- Customer selectable armature or tach feedback (except BC138, BC139, BC140, BC140-FBR).
- Anti-demag circuit protects PM motors and helps protect the SCR power bridge against direct shorts.
- Noise rejection circuit eliminates false starts and blown SCR's.
- US and Canadian UL component recognition.

Additional features are standard only on enclosed control:

- On-off switch
- 115/230 voltage selection switch or jumper
- Pilot light (BC140, BC140-FBR, BC200, BC201, BC202, BC203, BC204, BC254 and BC354 only)
- Terminal strip connections
- Built in armature and line fusing
- BC140-FBR includes Forward-Brake-Reverse switch

A Plug-in Horsepower Resistor® and armature fuse **must** be ordered and installed in BC138, BC139, BC140, BC140-FBR, BC141 and BC142. Spare resistor kits are also available. Resistor should be selected based on the motor's rated current.

| Hp Range  | Catalog Number | Approximate Shipping Weight (Lbs) | Input Voltage |
|-----------|----------------|-----------------------------------|---------------|
| 1/100-1/3 | BC138          | 1                                 | 115 VAC       |
| 1/50-3/4  | BC139          | 1                                 | 230 VAC       |
| 1/100-2*  | BC140          | 3                                 | 115/230 VAC   |
| 1/100-2*  | BC140-FBR      | 3                                 | 115/230 VAC   |

**NOTE:** \*1 Hp at 115V and 2 Hp at 230V requires BC143 heatsink kit.  
FBR = Forward/Brake/Reverse.

### DC Control Accessories

| Catalog Number | Description   | Approximate Shipping Weight (Lbs) |
|----------------|---|-----------------------------------|
| BC24-LF        | Ac Line Filter for use with CE Applications                   | 0.5                               |
| BC143          | External Heatsink Kit (BC140, BC140-FBR, BC141, BC142)        | 2.0                               |
| BC144          | Forward-Brake-Reverse Switch Kit for BC140                    | 0.4                               |
| BC145          | Signal Isolator Board   | 0.5                               |
| BC146          | Current Sensing Relay/Overload Protector                      | 0.4                               |
| BC147          | Barrier Terminal Board (BC141 & BC142)                        | 0.3                               |
| BC148          | Replacement Potentiometer Kit (5K ohm)                        | 0.1                               |
| BC149          | Knob and Dial Kit   | 0.1                               |
| BC151          | Electronic Speed Potentiometer                                | 0.5                               |
| BC152          | Barrier Terminal Board With Signal Isolator (BC141 AND BC142) | 1.0                               |
| BC218          | DIN-rail mounting kit for BC141, BC142 or BC204               | 0.5                               |

**NOTE:** BC24-LF is an AC line filter required for applications where CE is required if the control is not filtered elsewhere in the application. This filter is used on most 115 or 230 VAC, single phase applications where CE is required.

## Chassis Mount DC Controls



BC141 / BC142



BC155

| Hp Range    | Catalog Number | Approximate Shipping Weight (Lbs) | Input Voltage (1Ph,50/60 Hz) |
|-------------|----------------|-----------------------------------|------------------------------|
| 1/100-1.5** | BC141          | 1                                 | 115 VAC                      |
| 1/50-3**    | BC142          | 2                                 | 230 VAC                      |
| 5           | BC155          | 5                                 | 230 VAC                      |

**NOTE:** Above controls include 5k speed potentiometer.  
 \*\*1-1.5 Hp at 115 Volts and 2-3 Hp at 230 Volts, requires BC143 Heatsink kit. BC155 Includes integral heatsink.

## Plug-In Horsepower Resistor & Fuse Kit

A Plug-in Horsepower Resistor® and armature fuse **must** be ordered and installed in BC138, BC139, BC140, BC140-FBR, BC141 and BC142. These should be selected based on the motor's **rated current**.

| Motor Hp Armature Voltage |         | Plug-In Hp Resistor Resistance Value (Ohms) | Baldor Catalog Number | Approximate Motor Current (DC Amps) | DC Fuse Rating (AC Amps) |
|---------------------------|---------|---|-----------------------|-------------------------------------|--------------------------|
| 90-130 VDC                | 180 VDC |   |                       |                                     |                          |
| 1/100                     | 1/50    | 1.00  | BR1000                | 0.20                                | 0.50                     |
| 1/50                      | 1/25    | 0.51  | BR0510                | 0.30                                | 0.50                     |
| 1/30                      | 1/15    | 0.35  | BR0350                | 0.33                                | 0.50                     |
| 1/20                      | 1/10    | 0.25  | BR0250                | 0.50                                | 0.75                     |
| 1/15                      | 1/8     | 0.25  | BR0251                | 0.80                                | 1.00                     |
| 1/12                      | 1/6     | 0.18  | BR0180                | 0.85                                | 1.25                     |
| 1/8                       | 1/4     | 0.10  | BR0100                | 1.30                                | 2.00                     |
| 1/6                       | 1/3     | 0.10  | BR0101                | 2.00                                | 2.50                     |
| 1/4                       | 1/2     | 0.05  | BR0050                | 2.50                                | 4.00                     |
| 1/3                       | 3/4     | 0.035                                       | BR0035                | 3.30                                | 5.00                     |
| 1/2                       | 1       | 0.025                                       | BR0025                | 5.00                                | 8.00                     |
| 3/4                       | 1 1/2   | 0.015                                       | BR0015                | 7.50                                | 12.00                    |
| 1*                        | 2*      | 0.01  | BR0010                | 10.00                               | 15.00                    |
| 1 1/2*                    | 3*      | 0.006                                       | BR0006                | 15.00                               | 25.00**                  |

**NOTE:** \* External Heatsink required. \*\* Also used with AC Line Fuse. For AC line fuse rating see manual.



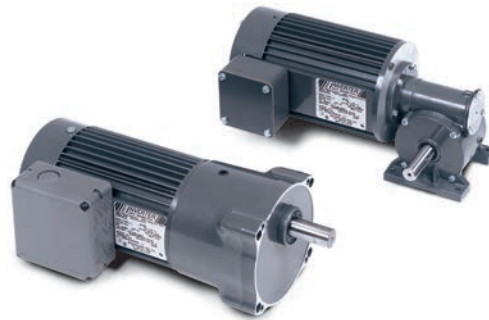
## Reducer Accessories and Modifications

- Base kits
- Hollow shaft bushings
- Torque arm kits
- Cast iron and steel output flanges
- Tack on double reduction adapters
- Wash-down units



## Inverter Duty Gearmotors

Baldor's Inverter Duty Gearmotor line is rated 3/8 Hp at 230 Volt, 60 Hz, 3-Phase, with an operating range from 10-90 Hz. Available in a broad range of ratios meeting your demanding application needs.



## PT Components

- Fixed Bore, Bush Type, Fractional Fixed Bore, and Step Pulleys
- "QD" Bushings and Weld-on Hubs, Taper-Lock Bushings, XT Bushings and Hubs
- Maska Starflex, Maska 4-Flex and Maskaflex couplings
- Timing Pulleys and HTD Sprockets
- Synchronous & V-Belts



For more information about our products and where to buy them,  
please visit our website at [www.baldor.com](http://www.baldor.com)

**UNITED STATES****ARIZONA**

**PHOENIX**  
4211 S 43RD PLACE  
PHOENIX, AZ 85040  
PHONE: 602-470-0407  
FAX: 602-470-0464

**ARKANSAS**

**CLARKSVILLE**  
706 WEST MAIN STREET  
CLARKSVILLE, AR 72830  
PHONE: 479-754-9108  
FAX: 479-754-9205

**CALIFORNIA**

**LOS ANGELES**  
6480 FLOTILLA STREET  
COMMERCE, CA 90040  
PHONE: 323-724-6771  
FAX: 323-721-5859

**HAYWARD**

21056 FORBES STREET  
HAYWARD, CA 94545  
PHONE: 510-785-9900  
FAX: 510-785-9910

**COLORADO**

**DENVER**  
3855 FOREST STREET  
DENVER, CO 80207  
PHONE: 303-623-0127  
FAX: 303-595-3772

**CONNECTICUT**

**WALLINGFORD**  
65 SOUTH TURNPIKE ROAD  
WALLINGFORD, CT 06492  
PHONE: 203-269-1354  
FAX: 203-269-5485

**FLORIDA**

**TAMPA/PUERTO RICO/  
VIRGIN ISLANDS**  
3906 EAST 11TH AVENUE  
TAMPA, FL 33605  
PHONE: 813-248-5078  
FAX: 813-241-9514

**GEORGIA**

**ATLANTA**  
62 TECHNOLOGY DRIVE  
ALPHARETTA, GA 30005  
PHONE: 770-772-7000  
FAX: 770-772-7200

**ILLINOIS**

**CHICAGO**  
340 REMINGTON BLVD.  
BOLINGBROOK, IL 60440  
PHONE: 630-296-1400  
FAX: 630-226-9420

**INDIANA**

**INDIANAPOLIS**  
5525 W. MINNESOTA STREET  
INDIANAPOLIS, IN 46241  
PHONE: 317-246-5100  
FAX: 317-246-5110

**IOWA**

**DES MOINES**  
1943 HULL AVENUE  
DES MOINES, IA 50313  
PHONE: 515-263-6929  
FAX: 515-263-6515

**MARYLAND**

**BALTIMORE**  
7071A DORSEY RUN RD  
ELKRIDGE, MD 21075  
PHONE: 410-579-2135  
FAX: 410-579-2677

**MASSACHUSETTS**

**BOSTON**  
6 PULLMAN STREET  
WORCESTER, MA 01606  
PHONE: 508-854-0708  
FAX: 508-854-0291

**MICHIGAN**

**DETROIT**  
5993 PROGRESS DRIVE  
STERLING HEIGHTS, MI 48312  
PHONE: 586-978-9800  
FAX: 586-978-9969

**MINNESOTA**

**MINNEAPOLIS**  
13098 GEORGE WEBER DR, SUITE 400  
ROGERS, MN 55374  
PHONE: 763-428-3633  
FAX: 763-428-4551

**MISSOURI**

**ST LOUIS**  
13678 LAKEFRONT DRIVE  
EARTH CITY, MO 63045  
PHONE: 314-373-3032  
FAX: 314-373-3038

**KANSAS CITY**

9810 INDUSTRIAL BLVD.  
LENEXA, KS 66215  
PHONE: 816-587-0272  
FAX: 816-587-3735

**NEW YORK**

**AUBURN**  
ONE ELLIS DRIVE  
AUBURN, NY 13021  
PHONE: 315-255-3403  
FAX: 315-253-9923

**NORTH CAROLINA**

**GREENSBORO**  
1220 ROTHERWOOD ROAD  
GREENSBORO, NC 27406  
PHONE: 336-272-6104  
FAX: 336-273-6628

**OHIO**

**CINCINNATI**  
2929 CRESCENTVILLE ROAD  
WEST CHESTER, OH 45069  
PHONE: 513-771-2600  
FAX: 513-772-2219

**CLEVELAND**

8929 FREEWAY DRIVE  
MACEDONIA, OH 44056  
PHONE: 330-468-4777  
FAX: 330-468-4778

**OKLAHOMA**

**TULSA**  
5555 E. 71ST ST., SUITE 9100  
TULSA, OK 74136  
PHONE: 918-366-9320  
FAX: 918-366-9338

**OREGON**

**PORTLAND**  
12651 SE CAPPS ROAD  
CLACKAMAS, OR 97015  
PHONE: 503-691-9010  
FAX: 503-691-9012

**PENNSYLVANIA**

**PHILADELPHIA**  
1035 THOMAS BUSCH  
MEMORIAL HIGHWAY  
PENNSAUKEN, NJ 08110  
PHONE: 856-661-1442  
FAX: 856-663-6363

**PITTSBURGH**

159 PROMINENCE DRIVE  
NEW KENSINGTON, PA 15068  
PHONE: 724-889-0092  
FAX: 724-889-0094

**TENNESSEE**

**MEMPHIS**  
4000 WINCHESTER ROAD  
MEMPHIS, TN 38118  
PHONE: 901-365-2020  
FAX: 901-365-3914

**TEXAS**

**DALLAS**  
2920 114TH STREET SUITE 100  
GRAND PRAIRIE, TX 75050  
PHONE: 214-634-7271  
FAX: 214-634-8874

**HOUSTON**

10355 W. LITTLE YORK ROAD  
SUITE 300  
HOUSTON, TX 77041  
PHONE: 281-977-6500  
FAX: 281-977-6510

**UTAH**

**SALT LAKE CITY**  
2230 SOUTH MAIN STREET  
SALT LAKE CITY, UT 84115  
PHONE: 801-832-0127  
FAX: 801-832-8911

**WISCONSIN**

**MILWAUKEE**  
1960 SOUTH CALHOUN ROAD  
NEW BERLIN, WI 53151  
PHONE: 262-784-5940  
FAX: 262-784-1215

**INTERNATIONAL SALES**

**FORT SMITH, AR**  
P.O. BOX 2400  
FORT SMITH, AR 72902  
PHONE: 479-646-4711  
FAX: 479-648-5895

**CANADA**

**EDMONTON, ALBERTA**  
4053-92 STREET  
EDMONTON, ALBERTA T6E 6R8  
PHONE: 780-434-4900  
FAX: 780-438-2600

**TORONTO**

**OAKVILLE, ONTARIO**  
2910 BRIGHTON ROAD  
OAKVILLE, ONTARIO, CANADA L6H 5S3  
PHONE: 905-829-3301  
FAX: 905-829-3302

**MONTREAL, QUEBEC**

5155 J-ARMAND BOMBARDIER  
SAINT-HUBERT, QUÉBEC  
CANADA J3Z 1G4  
PHONE: 514-933-2711  
FAX: 514-933-8639

**VANCOUVER,**

**BRITISH COLUMBIA**  
1538 KEBET WAY  
PORT COQUITLAM,  
BRITISH COLUMBIA V3C 5M5  
PHONE 604-421-2822  
FAX: 604-421-3113

**WINNIPEG, MANITOBA**

54 PRINCESS STREET  
WINNIPEG, MANITOBA R3B 1K2  
PHONE: 204-942-5205  
FAX: 204-956-4251

**MEXICO**

**LEON, GUANAJUATO**  
KM. 2.0 BLVD. AEROPUERTO  
LEON, GUANAJUATO, CP37545  
MEXICO  
PHONE: +52 477 761 2030  
FAX: +52 477 761 2010

**Baldor Electric Company**

P.O. Box 2400

Fort Smith, AR 72902-2400 U.S.A.

Ph (479) 646-4711 • Fax (479) 648-5792

International Fax (479) 648-5895

[www.baldor.com](http://www.baldor.com)