



# 1-1/4" GRAB BARS WITH CONCEALED FLANGES, SATIN FINISH TECHNICAL SPECIFICATION

Job Name \_\_\_\_\_ Item # \_\_\_\_\_  
 Location \_\_\_\_\_  
 Engineer \_\_\_\_\_ Contractor \_\_\_\_\_  
 PO # \_\_\_\_\_ Tag \_\_\_\_\_  
 Representative \_\_\_\_\_

## SPECIFICATIONS

Dearborn Brass Stainless Steel Grab Bars are designed for use in hospitals, hotels, government facilities, commercial building and residential home settings. ADA Compliant.

## DESCRIPTION

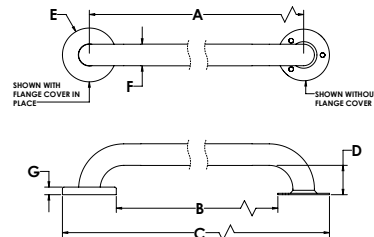
- Satin Finish
- Bar 18 ga. 304 Stainless Steel
- Flange: 14 ga. 304 Stainless Steel
- Screws: #10 x 2" Self Tapping Stainless Steel

## APPROVALS AND LISTINGS

ASTM F 446 with 1-1/2" clearance  
 ANSI A117.1

## DIMENSIONS

[A]:	Length A	See Chart A.1	[E]	Diameter E	3"
[B]:	Length B	See Chart A.1	[F]	Diameter F	1.25"
[C]:	Length C	See Chart A.1	[G]	Cover Height G	0.44"
[D]:	Height D	1.75"			



A.1 - LENGTHS									
	Size 1-1/4" x 12"	Size 1-1/4" x 16"	Size 1-1/4" x 18"	Size 1-1/4" x 24"	Size 1-1/4" x 30"	Size 1-1/4" x 32"	Size 1-1/4" x 36"	Size 1-1/4" x 42"	Size 1-1/4" x 48"
<b>Length A</b>	12"	16"	18"	24"	30"	32"	36"	42"	48"
<b>Length B</b>	9"	13"	15"	21"	27"	29"	33"	39"	45"
<b>Length C</b>	15"	19"	21"	27"	33"	35"	39"	45"	51"

Access BIM/Revit content through [www.oatey.com](http://www.oatey.com)



# 1-1/4" GRAB BARS WITH CONCEALED FLANGES, SATIN FINISH TECHNICAL SPECIFICATION

## PRODUCT SELECTOR

1-1/4" GRAB BARS WITH CONCEALED FLANGES, SATIN FINISH				
✓	Product Number	Size	Description	Carton Quantity
	DB8712	1-1/4" x 12"	Stainless Steel Grab Bar w/ Concealed Flange, Satin Finish	4
	DB8716	1-1/4" x 16"	Stainless Steel Grab Bar w/ Concealed Flange, Satin Finish	4
	DB8718	1-1/4" x 18"	Stainless Steel Grab Bar w/ Concealed Flange, Satin Finish	4
	DB8724	1-1/4" x 24"	Stainless Steel Grab Bar w/ Concealed Flange, Satin Finish	4
	DB8730	1-1/4" x 30"	Stainless Steel Grab Bar w/ Concealed Flange, Satin Finish	4
	DB8732	1-1/4" x 32"	Stainless Steel Grab Bar w/ Concealed Flange, Satin Finish	4
	DB8736	1-1/4" x 36"	Stainless Steel Grab Bar w/ Concealed Flange, Satin Finish	4
	DB8742	1-1/4" x 42"	Stainless Steel Grab Bar w/ Concealed Flange, Satin Finish	4
	DB8748	1-1/4" x 48"	Stainless Steel Grab Bar w/ Concealed Flange, Satin Finish	4