



a Geberit company

2100 South Clearwater Drive
Des Plaines, IL 60018
Phone: 847-803-5000
Fax: 847-803-5454
www.chicagofaucets.com

FOR TECHNICAL ASSISTANCE
1-800-TEC-TRUE (1-800-832-8783)

REPAIR PARTS

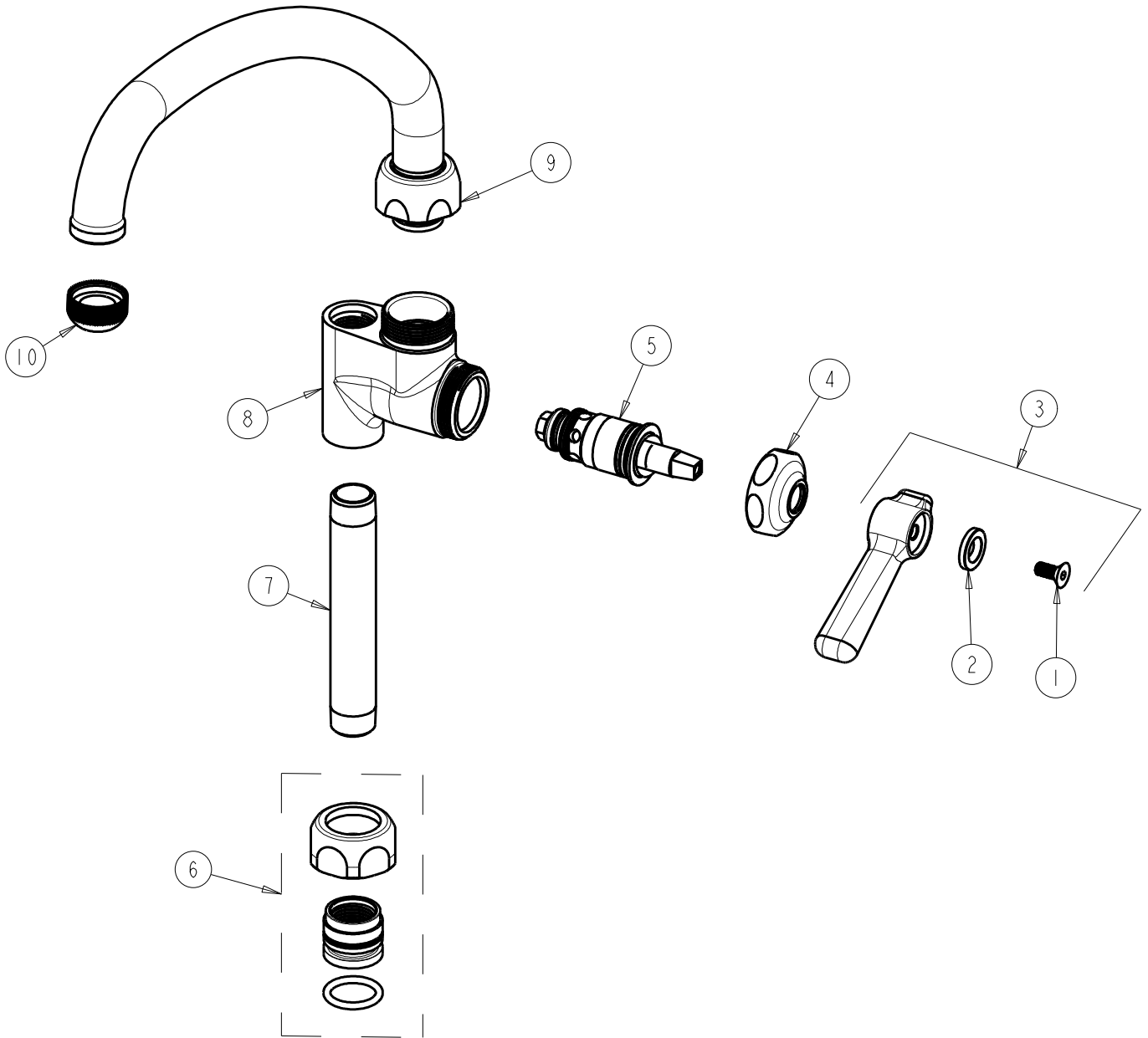
BY: JAR DATE: 10-24-11
CHK: *JAR* REV: 06-19-15

FITTING NO.

613-AABCP

SUBMITTED MODEL NO.

ITEM NO.



NOTE:
PART 7 IS ADHESIVED TO ITEM 8 AT THE
FACTORY BUT IS AVAILABLE AS A 'JK' PART.

ITEM	PART NO.	DESCRIPTION	ITEM	PART NO.	DESCRIPTION
1	420-020JKNF	SCREW, 1/8 FLAT HEX HEAD X 1/2	6	143-PPJKABNF	PRE-PACK
2	633-223JKNF	INDEX BUTTON (WHITE)	7	906-002JKABCP	NIPPLE 3/8" NPT X 4"
3	369-PLJKCP	PLAIN LEVER HANDLE	8	-----	VALVE BODY (NOT SOLD SEPARATELY)
4	1-214JKCP	CAP	9	L9LEOJKAB	SPOUT, 9-1/2 C-C
5	1-099XTJKABNF	QUATURN CARTRIDGE (RH)	10	E1JKABRCF	OUTLET, QUIXTOP