

## HyTronic® and E-Tronic® 40 Solenoid Servicing Instructions



### HyTronic® Solenoid Servicing Instructions

For servicing HyTronic electronic faucets that contain a ".21" in the model number, i.e. 116.201.21.1

For a video of this solenoid servicing procedure, visit [chicagofaucets.com](http://chicagofaucets.com) located in the customer care videos section.

#### STEP 1

Shut off water supply.

#### STEP 2

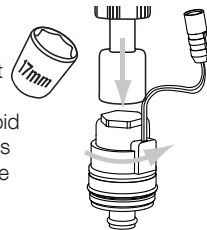
Remove spout by first removing the safety shut-off screw located at the back of spout, then lift spout in straight upward movement. (For external mixer models be sure to remove the external temperature control handle.)

#### STEP 3

Unplug solenoid wire connector from electronic module.

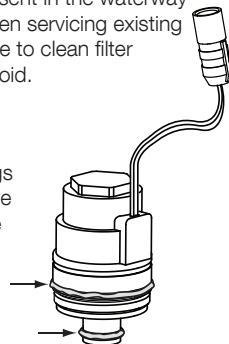
#### STEP 4

Use a 17mm socket with ratchet or driver to loosen and remove solenoid valve. Valve loosens in counterclockwise direction.



#### STEP 5

Remove any water deposits or debris that may be present in the waterway body cavity. When servicing existing solenoid, be sure to clean filter screen on solenoid.

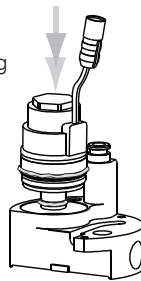


#### STEP 6

Lubricate O-rings on solenoid valve with rubber safe lubricant.

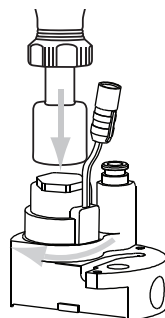
#### STEP 7

Insert solenoid into body cavity. Upper O-ring should seat below top of valve body and not be visible before turning. (Be sure that the solenoid O-ring does not become pinched between body during insertion.)



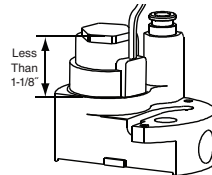
#### STEP 8

Turn the solenoid clockwise to begin threading into body. Apply downward pressure on solenoid while threading.



#### STEP 9

Completely tighten to 8-10 in/lbs torque with wrench. Do not over tighten. A properly assembled solenoid valve has a height dimension slightly less than 1-1/8" from body to top of solenoid.



#### STEP 10

Plug solenoid wire connector to electronic module. Note: Insure that the connector polarity is properly attached or the faucet will not function properly.

#### STEP 11

Reinstall spout in straight downward motion.

#### STEP 12

Turn on water and allow faucet to reset before operating.

## HyTronic® ECAST® and E-Tronic® 40 Solenoid Servicing Instructions

For servicing HyTronic ECAST faucets that contain an “AB” in the model number, i.e. 116.201.**AB**.1, and for E-Tronic 40 electronic faucets.

### STEP 1

Shut off water supply.

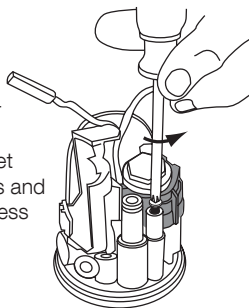
### STEP 2

Hytronic Models: Remove spout by first removing the safety shut-off screw located at the back of spout, then lift spout in straight upward movement. (For external mixer models be sure to remove the external temperature control handle.)

E-Tronic 40 Models: Remove spout by first removing spout screw located near spout outlet.

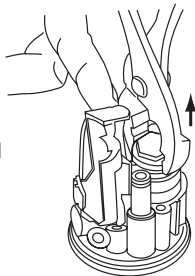
### STEP 3

Remove two E-Tronic 40, or three HyTronic solenoid bonnet retainer screws and retainer to access the solenoid.



### STEP 4

Unplug solenoid wire connector from electronic module.



### STEP 5

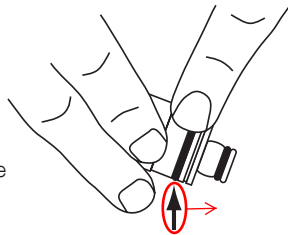
Remove solenoid by pulling in an upward motion.

### STEP 6

Remove any water deposits or debris that may be present in the waterway body cavity. When servicing existing solenoid, be sure to clean filter screen on solenoid.

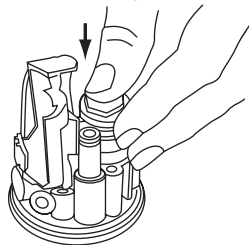
### STEP 7

Lubricate O-rings on solenoid valve with rubber safe lubricant.



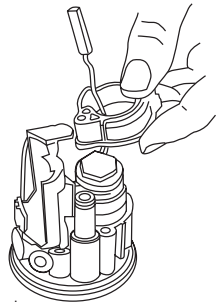
### STEP 8

Insert solenoid into body cavity and push down until fully seated.



### STEP 9

Feed the solenoid wire connector through the bonnet retainer and reconnect to electronic module. Note: Insure that the connector polarity is properly attached or the faucet will not function properly.



### STEP 10

Align holes on bonnet retainer with solenoid retainer and reinstall screws and tighten screws to 10 in/lbs of torque.

### STEP 11

Reinstall top spout or body housing.

### STEP 12

Turn on water and allow faucet to reset before operating.