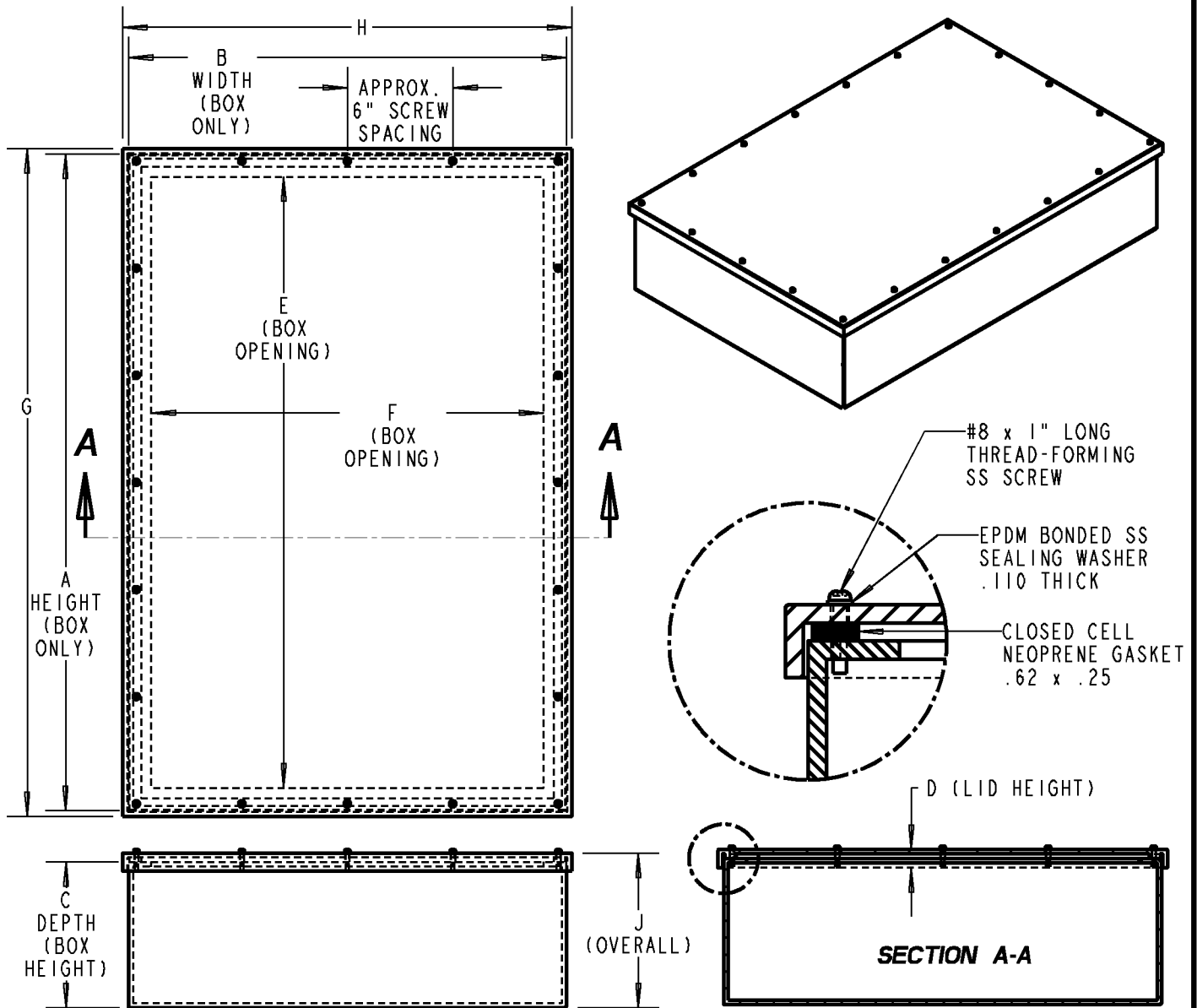


Carlton®



NOTES:

* ENCLOSURE MATERIAL IS TYPE II PVC, 3/16" THICK, HAS A UL94 V0 FLAME RATING AND IS UL 746C FI RATED FOR OUTDOOR USE.


* MAXIMUM TORQUE ON ALL THREADS IS 10 IN/LBS

GENERAL NOTES		Thomas & Betts A Member of the ABB Group			
1. ALL DIMENSIONS ARE FOR REFERENCE ONLY. 2. DIMENSIONS IN BRACKETS [] ARE IN METRIC UNITS.					
REVISIONS		DESCRIPTION: LARGE PC JUNCTION BOXES NEMA 4X			
F	SEE ERN 2014219 FOR APPROVAL SIGNATURES & RELEASE DATE. PROJECT NO: 5AM000014	ORIGINAL PROJECT NO / (ERN NO) / ()	SHEET NO: 1 OF 2	REV. NO: F	DRAWING NO: WSD-AC05130

Carlton®

DIMENSIONS ARE DISPLAYED IN INCHES/mm.

PART NUMBER	A	B	C	D	E	F	G	H	J ±.06 [1,5]
EP12128	12" [305]	12" [305]	8" [203]	1.00" [25]	10.5" [267]	10.5" [267]	12.5" [318]	12.5" [318]	8.38" [213]
EP181812	18" [457]	18" [457]	12" [305]	1.00" [25]	16" [406]	16" [406]	18.5" [470]	18.5" [470]	12.38" [314]
EP201608	20" [508]	16" [406]	8" [203]	1.00" [25]	18" [457]	14" [356]	20.5" [521]	16.5" [419]	8.38" [213]
EP201808	20" [508]	18" [457]	8" [203]	1.00" [25]	18" [457]	16" [406]	20.5" [521]	18.5" [470]	8.38" [213]
EP202008	20" [508]	20" [508]	8" [203]	1.00" [25]	18" [457]	18" [457]	20.5" [521]	20.5" [521]	8.38" [213]
EP241808	24" [610]	18" [457]	8" [203]	1.00" [25]	22" [559]	16" [406]	24.5" [622]	18.5" [470]	8.38" [213]
EP242008	24" [610]	20" [508]	8" [203]	1.00" [25]	22" [559]	18" [457]	24.5" [622]	20.5" [521]	8.38" [213]
EP242408	24" [610]	24" [610]	8" [203]	1.00" [25]	22" [559]	22" [559]	24.5" [622]	24.5" [622]	8.38" [213]
EP302008	30" [762]	20" [508]	8" [203]	1.00" [25]	28" [711]	18" [457]	30.5" [775]	20.5" [521]	8.38" [213]
EP302408	30" [762]	24" [610]	8" [203]	1.00" [25]	28" [711]	22" [559]	30.5" [775]	24.5" [622]	8.38" [213]
EP362408	36" [914]	24" [610]	8" [203]	1.00" [25]	33.5" [851]	21.5" [546]	36.5" [927]	24.5" [622]	8.38" [213]

GENERAL NOTES		 Thomas & Betts A Member of the ABB Group			
1. ALL DIMENSIONS ARE FOR REFERENCE ONLY. 2. DIMENSIONS IN BRACKETS [] ARE IN METRIC UNITS.					
REVISIONS		DESCRIPTION: LARGE PC JUNCTION BOXES NEMA 4X			
F SEE ERN 2014219 FOR APPROVAL SIGNATURES & RELEASE DATE. PROJECT NO: 5AM000014					
		ORIGINAL PROJECT NO / (ERN NO) / ()	SHEET NO: 2 OF 2	REV. NO: F	DRAWING NO: WSD-AC05130