



Low Prices
Fast Shipping
Huge Inventory

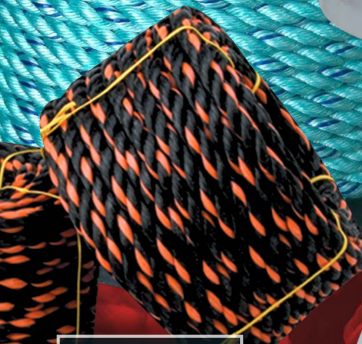
ROPE & TWINE



ITEM 402040 3 Strand
 BLUE STEEL Rope,
 3/8" x 600'



ITEM 105100 Solid Braid
 Nylon Rope, #10 x 500'



ITEM 152020
 Polypro CA Truck
 Rope, 3/8" x 100'



ITEM 134014 Braided
 Mason-Seine Twine,
 #18 x 1100' 16 oz tube



ITEM 124605 Pro Series
 Sash Cord, 1/4" x 100'

ROPE

- 3 Strand Synthetic 1-5
- 12 Strand 6-7
- Double Braids 8
- Solid Braids 9
- Hollow / Spun / Knit Braids 10
- Natural Fiber 11-12
- Braided Cord 12-14
- Sash Cord 14-15
- Crab / Fishing Rope 16-18
- Mooring Line 19
- 8 Braids 19-20
- Dock / Anchor Line 21
- Utility 22-23
- Halter-Lead Rope 24
- Safety / Arborist Rope 25
- Tools 25
- Retail Packaged / Splicing 26-27

TWINE

- Synthetic Tying 28-29
- Sewing / Sacking 30
- Mason-Seine Twine 31
- Natural Fiber 32
- Baler Twine & Accessories 33-34

Three Easy Ways to Order

Call: 1-800-292-7717

Fax: 1-800-292-0494

Web: www.cwcglobal.com

Continental Western Corporation

Choosing the right cordage is essential for effective application and safety. Use this rope selection guide to help you decide which kind of rope is right for your application.



MANILA was once the preferred choice in cordage before synthetic fibers were developed. Manila rope still maintains some advantages to synthetic fiber rope; it is not affected by heat, and has excellent resistance to UV (ultraviolet) rays.



SISAL fibers come from the agave and sisalana plants indigenous to the tropics. Sisal fibers share many characteristics with manila, but only 80% of its tensile strength. It is less expensive than manila and makes a good general purpose rope. Sisal is commonly used to produce tying twine as well.



JUTE is mainly used as a tying twine. It knots well, but due to its short fibers, does not have the strength of manila or sisal.



COTTON is a natural fiber, typically white in color. Cotton cordage is soft, making it pleasant to handle. It also knots very well.



POLYPROPYLENE rope is flexible and lightweight. It is rot-proof and floats in water; it resists oil, water, gasoline and most chemicals. Available twisted or braided, polypropylene rope is an economical general purpose rope.



POLY-DAC is polyester strands wrapped around polypropylene core yarns. This rope exhibits the same qualities as polypropylene, with good abrasion resistance, relatively low stretch, and better resistance to UV rays.



POLYESTER is very strong and has excellent resistance to abrasion. It stretches much less than nylon, but does not absorb shock like nylon; this makes polyester very popular for marine or industrial applications, where stretch is not desired. It is resistant to UV rays, rot, petroleum products and most chemicals.



NYLON is known for its elasticity and tremendous shock absorbing qualities. It has good abrasion resistance, is rot proof and resists petroleum products and most chemicals. It is resistant to UV rays. Nylon rope will last 4-5 times longer than ropes made of natural fibers.

Characteristic Comparison Table

FIBER TYPE	NYLON	POLYESTER	POLYPROPYLENE	POLY-DAC	MANILA / SISAL	COTTON
STRENGTH	1	2	3	4	5	6
WET STRENGTH VS DRY STRENGTH	85%	100%	100%	100%	115%	115%
SHOCK LOAD ABILITY	1	3	2	4	5	6
FLOATS OR SINKS IN WATER	SINKS	SINKS	FLOATS	FLOATS*	SINKS	SINKS
ELONGATION AT BREAK	20-34%	15%-20%	15%-20%	10%-15%	10%-15%	5%-10%
WATER ABSORPTION	6%	ZERO	ZERO	ZERO	100%	100%
MELTING POINT	480° F	500° F	330° F	275° F	DOES NOT MELT CHARS AT 350° F	DOES NOT MELT CHARS AT 350° F
ABRASION RESISTANCE	2	1	4	5	3	3
RESISTANCE TO SUNLIGHT	GOOD	EXCELLENT	POOR	FAIR	GOOD	GOOD
RESISTANCE TO ROT	EXCELLENT	EXCELLENT	EXCELLENT	EXCELLENT	POOR	POOR
RESISTANCE TO ACIDS	POOR	GOOD	GOOD	GOOD	POOR	POOR
RESISTANCE TO ALKALIS	GOOD	POOR	GOOD	GOOD	POOR	POOR
RESISTANCE TO OIL AND GAS	GOOD	GOOD	GOOD	GOOD	POOR	POOR
ELECTRICAL CONDUCTIVITY RESISTANCE	POOR	GOOD	GOOD	GOOD	POOR	POOR
FLEXING ENDURANCE	1	2	3	6	4	5
SPECIFIC GRAVITY	1.14	1.38	.90	.95	1.38	1.54
STORAGE REQUIREMENTS	WET OR DRY	WET OR DRY	WET OR DRY	WET OR DRY	DRY ONLY	DRY ONLY

*2" DIAMETER OR GREATER

CWC BLUE STEEL™

The Economical, High Strength, High Tenacity All-Purpose Super Utility Rope

CWC BLUE STEEL™ is one of the strongest copolymer ropes in the market. It offers low elongation and twice the wear life of standard polypropylene. Constructed from high strength, high tenacity polyolefin yarns, BLUE STEEL™ offers excellent resistance to abrasion, UV light, rot, mildew and most common chemicals. With a specific gravity of 0.91, this rope floats and will not absorb water. Easy to handle and splice.

Features:

- 30-40% stronger than standard polypro rope of comparable diameters
- Great UV and abrasion resistance
- Available in a variety of put-ups, 8 braid and 12 strand

BLUE STEEL™ on Reels

Item #	Dimensions	Color	Tensile	Weight
402006	1/8" x 1200'	Teal w/Dk Blue Tracer	800 lbs	7 lbs
402011	3/16" x 1200'	Teal w/Dk Blue Tracer	950 lbs	8 lbs
402015	1/4" x 600'	Teal w/Dk Blue Tracer	1600 lbs	7 lbs
402019	1/4" x 1200'	Teal w/Dk Blue Tracer	1600 lbs	14 lbs
402023	5/16" x 600'	Teal w/Dk Blue Tracer	3100 lbs	12 lbs
402025	5/16" x 1200'	Teal w/Dk Blue Tracer	3100 lbs	24 lbs
402026	5/16" x 1200'	Teal w/Dk Blue Tracer - Medium Firm Lay	3100 lbs	24 lbs
402040	3/8" x 600'	Teal w/Dk Blue Tracer	3800 lbs	15 lbs
402042	3/8" x 1200'	Teal w/Dk Blue Tracer	3800 lbs	30 lbs
402041	3/8" x 1200'	Teal w/Dk Blue Tracer - Medium Firm Lay	3800 lbs	30 lbs
402043	3/8" x 2500'	Teal w/Red Tracer	3800 lbs	63 lbs
402045	7/16" x 600'	Teal w/Dk Blue Tracer	4700 lbs	18 lbs
402050	1/2" x 600'	Teal w/Dk Blue Tracer	6600 lbs	27 lbs
402055	1/2" x 1200'	Teal w/Dk Blue Tracer	6600 lbs	53 lbs
402080	9/16" x 600'	Teal w/Dk Blue Tracer	8900 lbs	36 lbs
402082	5/8" x 600'	Teal w/Dk Blue Tracer	11000 lbs	46 lbs
402084	5/8" x 1200'	Teal w/Dk Blue Tracer	11000 lbs	92 lbs
402097	3/4" x 600'	Teal w/Dk Blue Tracer	13900 lbs	59 lbs
402106	7/8" x 600'	Teal w/Dk Blue Tracer	20100 lbs	88 lbs
402116	1" x 600'	Teal w/Dk Blue Tracer	23100 lbs	104 lbs
402121	1-1/8" x 600'	Teal w/Dk Blue Tracer	30000 lbs	142 lbs
402126	1-1/4" x 600'	Teal w/Dk Blue Tracer	32900 lbs	160 lbs
402134	1-1/2" x 600'	Teal w/Dk Blue Tracer	46100 lbs	234 lbs
402148	1-3/4" x 600'	Teal w/Dk Blue Tracer	66500 lbs	352 lbs



BLUE STEEL™ on Coils

Item #	Dimensions	Color	Tensile	Weight
402095	3/4" x 600'	Teal w/Dk Blue Tracer	13900 lbs	59 lbs
402100	3/4" x 1200'	Teal w/Dk Blue Tracer	13900 lbs	118 lbs
402105	7/8" x 600'	Teal w/Dk Blue Tracer	20100 lbs	88 lbs
402110	7/8" x 1200'	Teal w/Dk Blue Tracer	20100 lbs	177 lbs
402115	1" x 600'	Teal w/Dk Blue Tracer	23100 lbs	104 lbs
402120	1-1/8" x 600'	Teal w/Dk Blue Tracer	30000 lbs	142 lbs
402125	1-1/4" x 600'	Teal w/Dk Blue Tracer	32900 lbs	160 lbs
402135	1-1/2" x 600'	Teal w/Dk Blue Tracer	46100 lbs	234 lbs
402145	1-3/4" x 600'	Teal w/Dk Blue Tracer	66500 lbs	352 lbs
402150	2" x 600'	Teal w/Dk Blue Tracer	83500 lbs	451 lbs
402160	2-1/4" x 300'	Teal w/Dk Blue Tracer	107100 lbs	304 lbs
402162	2-1/4" x 600'	Teal w/Dk Blue Tracer	107100 lbs	609 lbs
402170	2-1/2" x 600'	Teal w/Dk Blue Tracer	122300 lbs	695 lbs
402195	3" x 600'	Teal w/Dk Blue Tracer	176000 lbs	1014 lbs



3 Strand Monofilament Polypropylene

This rope exhibits excellent resistance to oil, rot and most common chemicals. The 3 strand construction offers high strength with moderate stretch. Rope floats and will not absorb water.

Features:

- Lightweight, durable & economical
- Good resistance to abrasion & UV light

Yellow	Y/Y/B	Black	White	Dimensions	Tensile	Wt
300005				3/16" x 250'	650 lbs	2 lbs
300010		301050		3/16" x 600'	650 lbs	5 lbs
300015	301006	301055	301145	3/16" x 1200'	650 lbs	8 lbs
300030				1/4" x 250'	1125 lbs	4 lbs
400714				1/4" x 400'	1125 lbs	5 lbs
300035	301010	301060	301146	1/4" x 600'	1125 lbs	7 lbs
300040	301015	301065	301147	1/4" x 1200'	1125 lbs	14 lbs
		301067		1/4" x 2400'	1125 lbs	30 lbs
		304053		1/4" x 4000'	1125 lbs	44 lbs
300055	301020	301075	301144	5/16" x 600'	1710 lbs	12 lbs
300060	301021	301077	301143	5/16" x 1200'	1710 lbs	22 lbs
300073				3/8" x 300'	2430 lbs	8 lbs
300075	301023	301085	301148	3/8" x 600'	2430 lbs	16 lbs
300080		301087	301149	3/8" x 1200'	2430 lbs	32 lbs
		301086		3/8" x 2400'	2430 lbs	64 lbs
300110		301089		7/16" x 600'	3150 lbs	21 lbs
300115				7/16" x 1200'	3150 lbs	42 lbs
300120	301025	301090	301150	1/2" x 600'	3780 lbs	28 lbs
300125		301092	301151	1/2" x 1200'	3780 lbs	56 lbs
300130				9/16" x 600'	4590 lbs	35 lbs
300140	301027	301095		5/8" x 600'	5580 lbs	43 lbs
300145				5/8" x 1200'	5580 lbs	86 lbs
300150	301029	301100	301153	3/4" x 600'	7650 lbs	62 lbs
300155				3/4" x 1200'	7650 lbs	124 lbs
300160	301031	301103		7/8" x 600'	10350 lbs	97 lbs
300200	301038	301105	301156	1" x 600'	12825 lbs	108 lbs
300205				1" x 1200'	12825 lbs	216 lbs
300210		301106		1-1/8" x 600'	16000 lbs	136 lbs
300220	301040	301118		1-1/4" x 600'	19350 lbs	165 lbs
300236	301043	301117		1-1/2" x 600'	27350 lbs	236 lbs
300247	301044			1-3/4" x 600'	36900 lbs	318 lbs
300251	301046			2" x 600'	46800 lbs	414 lbs
300261	301045			2-1/2" x 600'	72000 lbs	642 lbs
300271	301048			3" x 600'	102600 lbs	920 lbs

Monofilament Polypro - Colors

All the rich color variations of CWC monofilament polypro rope have identical characteristics. Please refer to the 3 strand monofilament polypro section for weights and tensile strengths.

Blue	Orange	Green	Magenta	Red	Dimensions
301200		301326			1/4" x 600'
		301329			1/4" x 1200'
301205			301164		5/16" x 600'
301210	301310			301305	3/8" x 600'
	301311				3/8" x 1200'
301213					7/16" x 600'
301215					1/2" x 600'
301201					5/8" x 600'
301225	301316	301136		301307	3/4" x 600'
301230					1" x 600'



3 Strand Split Film Polypropylene

This rope has a balanced construction, medium lay and moderate stretch. Very similar to the monofilament in strength, and resistance to UV rays and chemicals.

Features:

- Lightweight, durable & economical
- Better hand knot-ability than monofilament

Item #	Dimensions	Color	Tensile	Weight
400005	3/16" x 600'	Yellow	650 lbs	4 lbs
400007	3/16" x 1200'	Yellow	650 lbs	8 lbs
400015	1/4" x 600'	Yellow	1125 lbs	7 lbs
400020	1/4" x 1200'	Yellow	1125 lbs	14 lbs
400021	1/4" x 1200'	Black	1125 lbs	14 lbs
400035	5/16" x 600'	Yellow	1710 lbs	11 lbs
400040	5/16" x 1200'	Yellow	1710 lbs	22 lbs
400045	3/8" x 600'	Yellow	2430 lbs	16 lbs
400050	3/8" x 1200'	Yellow	2430 lbs	32 lbs
400055	7/16" x 600'	Yellow	3150 lbs	21 lbs
400070	1/2" x 600'	Yellow	3780 lbs	28 lbs
400075	1/2" x 1200'	Yellow	3780 lbs	54 lbs
400100	5/8" x 600'	Yellow	5580 lbs	43 lbs
400110	3/4" x 600'	Yellow	7650 lbs	62 lbs
400120	7/8" x 600'	Yellow	10350 lbs	85 lbs
400130	1" x 600'	Yellow	12825 lbs	108 lbs



3 Strand MANILLO™

Stronger, half the weight, and lower cost per foot than manila rope, CWC MANILLO™ offers all the features of monofilament polypro, with natural manila color. Great alternative for applications that require the classic look of fiber rope, in conditions where the durability of a synthetic fiber rope is required.

Features:

- Lightweight, durable & economical
- Better hand knot-ability than monofilament

Item#	Dimensions	Color	Tensile	Weight
341005	1/4" x 600'	Natural Manila	1125 lbs	7 lbs
341010	1/4" x 1200'	Natural Manila	1125 lbs	14 lbs
341020	5/16" x 600'	Natural Manila	1710 lbs	11 lbs
341030	3/8" x 600'	Natural Manila	2430 lbs	16 lbs
341031	3/8" x 1200'	Natural Manila	2430 lbs	32 lbs
341050	1/2" x 600'	Natural Manila	3780 lbs	28 lbs
341060	5/8" x 600'	Natural Manila	5580 lbs	43 lbs
341070	3/4" x 600'	Natural Manila	7650 lbs	62 lbs
341105	1" x 600'	Natural Manila	12825 lbs	108 lbs



3 Strand ICE BLUE™ Combo

Made from high-strength BLUE STEEL™ fibers wrapped with polyester yarns. This durable high tenacity 0.99% specific gravity rope will hover just under the water's surface, making it good for mooring lines, tow lines, head ropes, net ropes or any application where you need a durable rope that floats.

Features:

- High strength and low elongation
- Great abrasion resistance

Item #	Dimensions	Color	Put-up	Tensile	Weight
403316	1-1/4" x 600'	Teal	Coil	34200 lbs	200 lbs
403320	1-1/2" x 600'	Teal	Coil	47500 lbs	303 lbs
403323	1-3/4" x 600'	Teal	Reel	66300 lbs	423 lbs
403331	2" x 600'	Teal	Reel	82900 lbs	532 lbs
403335	2-1/4" x 600'	Teal	Reel	112500 lbs	722 lbs
403340	2-1/2" x 600'	Teal	Coil	126000 lbs	808 lbs
403341	2-1/2" x 600'	Teal	Reel	126000 lbs	808 lbs
403350	3" x 600'	Teal	Coil	178400 lbs	1145 lbs



3 Strand Poly-Dac Combo

Our 3 strand CWC Poly-Dacron combo rope features high strength polyester fiber, bound over polypropylene core yarns. Poly-Dac has the same qualities as polypropylene rope, but with better resistance to abrasion and UV rays, as well as a softer feel. This rope will hover just under the water's surface.

Features:

- Soft hand/good grip service
- Good for marine or industrial applications
- Excellent abrasion resistance

Item #	Dimensions	Color	Tensile	Weight
325005	1/4" x 600'	Wht w/Blu & Org Tracers	1200 lbs	10 lbs
325010	1/4" x 1200'	Wht w/Blu & Org Tracers	1200 lbs	20 lbs
325015	5/16" x 600'	Wht w/Blu & Org Tracers	1870 lbs	15 lbs
325020	5/16" x 1200'	Wht w/Blu & Org Tracers	1870 lbs	30 lbs
325025	3/8" x 600'	Wht w/Blu & Org Tracers	2700 lbs	22 lbs
325030	3/8" x 1200'	Wht w/Blu & Org Tracers	2700 lbs	44 lbs
325040	7/16" x 600'	Wht w/Blu & Org Tracers	3500 lbs	29 lbs
325041	7/16" x 1200'	Wht w/Blu & Org Tracers	3500 lbs	58 lbs
325044	1/2" x 600'	White	4400 lbs	37 lbs
325045	1/2" x 600'	Wht w/Blu & Org Tracers	4400 lbs	37 lbs
325050	1/2" x 1200'	Wht w/Blu & Org Tracers	4400 lbs	74 lbs
325060	9/16" x 600'	Wht w/Blu & Org Tracers	5200 lbs	47 lbs
325062	9/16" x 1200'	Wht w/Blu & Org Tracers	5200 lbs	94 lbs
325064	5/8" x 600'	White	6100 lbs	57 lbs
325065	5/8" x 600'	Wht w/Blu & Org Tracers	6100 lbs	57 lbs
325070	5/8" x 1200'	Wht w/Blu & Org Tracers	6100 lbs	114 lbs
325090	3/4" x 600'	White	8400 lbs	81 lbs
325100	3/4" x 600'	Wht w/Blu & Org Tracers	8400 lbs	81 lbs
325105	3/4" x 1200'	Wht w/Blu & Org Tracers	8400 lbs	162 lbs
325110	7/8" x 600'	Wht w/Blu & Org Tracers	11125 lbs	108 lbs
325095	1" x 600'	White	13175 lbs	130 lbs
325120	1" x 600'	Wht w/Blu & Org Tracers	13175 lbs	130 lbs
325122	1" x 1200'	Wht w/Blu & Org Tracers	13175 lbs	260 lbs
325130	1-1/8" x 600'	Wht w/Blu & Org Tracers	16325 lbs	163 lbs
325140	1-1/4" x 600'	Wht w/Blu & Org Tracers	19900 lbs	200 lbs
325147	1-1/2" x 600'	Wht w/Blu & Org Tracers	28250 lbs	282 lbs
325167	1-3/4" x 600'	Wht w/Blu & Org Tracers	36850 lbs	372 lbs
325173	2" x 600'	Wht w/Blu & Org Tracers	48050 lbs	486 lbs



3 Strand Nylon

All-purpose 3 strand nylon rope offers high strength and elongation with good resistance to abrasion. Nylon exhibits great shock absorbing ability, as well as excellent resistance to ultraviolet exposure, mildew, rot, oil, grease, gasoline and many common chemicals. Easy to knot, grip and splice.

Features:

- Superior shock absorption
- Long-lasting and flexible
- Good for dock, anchor, mooring lines, securing boats or cargo

White	Black	Dimensions	Tensile	Weight
315005		3/16" x 600'	880 lbs	5 lbs
315010		3/16" x 1200'	880 lbs	9 lbs
315015	316203	1/4" x 600'	1485 lbs	8 lbs
315020		1/4" x 1200'	1485 lbs	16 lbs
315025	316204	5/16" x 600'	2295 lbs	13 lbs
315035	316205	3/8" x 600'	3240 lbs	18 lbs
315040		3/8" x 1200'	3240 lbs	36 lbs
315045		7/16" x 600'	4320 lbs	24 lbs
315046		7/16" x 1200'	4320 lbs	48 lbs
315055	316215	1/2" x 600'	5670 lbs	32 lbs
315060		1/2" x 1200'	5670 lbs	65 lbs
315100		9/16" x 600'	7200 lbs	39 lbs
315110	316230	5/8" x 600'	8910 lbs	50 lbs
315115		5/8" x 1200'	8910 lbs	101 lbs
315120	316235	3/4" x 600'	12780 lbs	73 lbs
315125		3/4" x 1200'	12780 lbs	146 lbs
315130		7/8" x 600'	17280 lbs	100 lbs
315140	316250	1" x 600'	22230 lbs	126 lbs
315150		1-1/8" x 600'	28260 lbs	160 lbs
315160		1-1/4" x 600'	34830 lbs	197 lbs
315200		1-1/2" x 600'	48600 lbs	274 lbs
315219		2" x 300'	84600 lbs	236 lbs
315220		2" x 600'	84600 lbs	472 lbs
315230		2-1/4" x 600'	107100 lbs	648 lbs
315235		2-1/2" x 600'	131400 lbs	760 lbs
315245		3" x 300'	185400 lbs	536 lbs
315250		3" x 600'	185400 lbs	1071 lbs



3 Strand Nylon - Firm Lay

Commonly referred to as "Cork Line," this shock-absorbent rope offers all the benefits of standard nylon 3 strand, with a firmer construction need in marine applications, such as float line.

Item #	Dimensions	Color	Tensile	Weight
315163	1-1/4" x 600'	White	34830 lbs	238 lbs
315202	1-1/2" x 600'	White	48600 lbs	342 lbs
315161	1-5/8" x 600'	White	57375 lbs	404 lbs
315164	1-3/4" x 600'	White	66150 lbs	468 lbs
315221	2" x 600'	White	84600 lbs	600 lbs



3 Strand Polyester

Durable rope offering high strength and much less stretch than nylon. Good resistance to abrasion. Excellent resistance to UV, rot, mildew, oil, grease, gasoline and many common chemicals. Well-suited for marine and industrial applications.

Features:

- Suited to pulley and winch lines
- High strength and low stretch

Item #	Dimensions	Color	Tensile	Weight
335015	1/4" x 600'	White	1315 lbs	12 lbs
335035	3/8" x 600'	White	2900 lbs	26 lbs
335055	1/2" x 600'	White	5085 lbs	46 lbs
335075	5/8" x 600'	White	7825 lbs	72 lbs
335105	3/4" x 600'	White	11200 lbs	103 lbs





Polypro Cal Truck Rope

Made from durable polypropylene, this rope offers long-lasting color, good strength and minimal stretch. Excellent resistance to oil, rot and most common chemicals. High strength, low stretch and good resistance to abrasion and UV light. This rope floats and will not absorb water.

Features:

- Conforms to CA Highway Patrol standards
- Orange surface marker in each strand

Black

Item	Dimensions	Color	Tensile	Weight
305005	3/8" x 600'	Black w/Org Tracer	2430 lbs	16 lbs
305010	3/8" x 1200'	Black w/Org Tracer	2430 lbs	32 lbs
305015	7/16" x 600'	Black w/Org Tracer	3150 lbs	21 lbs
305020	7/16" x 1200'	Black w/Org Tracer	3150 lbs	42 lbs
305025	1/2" x 600'	Black w/Org Tracer	3780 lbs	28 lbs
305030	1/2" x 1200'	Black w/Org Tracer	3780 lbs	56 lbs
305035	5/8" x 600'	Black w/Org Tracer	5580 lbs	43 lbs
305038	3/4" x 300'	Black w/Org Tracer	7650 lbs	31 lbs
305040	3/4" x 600'	Black w/Org Tracer	7650 lbs	62 lbs
305045	1" x 600'	Black w/Org Tracer	12825 lbs	108 lbs

Cal Truck Rope - Other Colors

Blu/Org	Yel/Org	Red/Org	Dimensions	Tensile	Weight
305048			3/8" x 600'	2430 lbs	16 lbs
305049			1/2" x 600'	3780 lbs	28 lbs
305050	305046	305051	1" x 600'	12825 lbs	108 lbs



CWC BLUE STEEL™ Cal Truck Rope

High strength BLUE STEEL™ truck rope features less elongation and more strength than standard polypro truck rope, and up to twice the wear life. This rope offers excellent resistance to abrasion, UV light, oil, grease and most common chemicals. This rope floats and will not absorb water.

Features:

- Conforms to CA Highway Patrol standards
- Orange surface marker in each strand
- Great UV and abrasion resistance

Item #	Dimensions	Color	Tensile	Weight
405405	3/8" x 600'	Teal w/Org Tracer	3800 lbs	15 lbs
405410	7/16" x 600'	Teal w/Org Tracer	4700 lbs	18 lbs
405415	1/2" x 600'	Teal w/Org Tracer	6600 lbs	27 lbs
405420	5/8" x 600'	Teal w/Org Tracer	11000 lbs	47 lbs
405425	3/4" x 600'	Teal w/Org Tracer	13900 lbs	59 lbs
405430	1" x 600'	Teal w/Org Tracer	23100 lbs	104 lbs



Poly-Dac Cal Truck Rope

This rope offers high tensile strength and better resistance to abrasion and UV rays than polypro truck rope, as well as a softer feel. Excellent resistance to abrasion, UV light, oil, rot and most common chemicals.

Features:

- Conforms to CA Highway Patrol standards
- High strength and minimal stretch
- Excellent abrasion resistance

Item #	Dimensions	Color	Tensile	Weight
326005	3/8" x 600'	White w/Org Tracer	2700 lbs	22 lbs
326010	3/8" x 1200'	White w/Org Tracer	2700 lbs	44 lbs
326015	7/16" x 600'	White w/Org Tracer	3500 lbs	29 lbs
326020	7/16" x 1200'	White w/Org Tracer	3500 lbs	58 lbs
326025	1/2" x 600'	White w/Org Tracer	4400 lbs	37 lbs
326030	1/2" x 1200'	White w/Org Tracer	4400 lbs	74 lbs
326035	5/8" x 600'	White w/Org Tracer	6100 lbs	57 lbs
326040	3/4" x 600'	White w/Org Tracer	8400 lbs	81 lbs
326041	3/4" x 1200'	White w/Org Tracer	8400 lbs	162 lbs
326050	1" x 600'	White w/Org Tracer	13175 lbs	130 lbs





12 Strand CWC BLUE STEEL™

12 strand CWC BLUE STEEL™ high strength co-extrusion polyolefin fiber rope offers superior resistance to UV rays and abrasion, compared to polypropylene rope. Easy to handle and splice, this rope also offers excellent resistance to rot, mildew, and most common chemicals.

Features:

- Balanced torque-free construction
- High strength and abrasion resistance
- 30-40% stronger than comparable polypro
- Easy to splice
- Larger sizes available on request
- **Also available in 3 strand and 8 braid**

Item #	Dimensions	Color	Tensile	Weight
353290	1/4" x 600'	Teal w/Dk Blue Tracer	1730 lbs	8 lbs
353295	5/16" x 600'	Teal w/Dk Blue Tracer	3250 lbs	14 lbs
353300	3/8" x 600'	Teal w/Dk Blue Tracer	4110 lbs	19 lbs
353305	7/16" x 600'	Teal w/Dk Blue Tracer	5800 lbs	27 lbs
353310	1/2" x 600'	Teal w/Dk Blue Tracer	6900 lbs	32 lbs
353320	5/8" x 600'	Teal w/Dk Blue Tracer	12200 lbs	58 lbs
353325	3/4" x 600'	Teal w/Dk Blue Tracer	15900 lbs	75 lbs
353328	7/8" x 600'	Teal w/Dk Blue Tracer	21200 lbs	102 lbs
353330	1" x 600'	Teal w/Dk Blue Tracer	25200 lbs	117 lbs



12 Strand Polyester

CWC 12 strand polyester provides high strength, low stretch and excellent abrasion resistance. It's easy to splice, and is 30% stronger than 3 strand or 8 braid polyester. Its torque-free construction will not twist or kink when load is applied. Applications for use include commercial fishing, tug working lines, mooring pennants and shock lines.

Features:

- Excellent UV and abrasion resistance, wet or dry
- Will not twist or kink
- Larger sizes available on request

Item #	Dimensions	Color	Tensile	Weight
353209	5/16" x 600'	White	3950 lbs	19 lbs
353210	3/8" x 600'	White	5000 lbs	27 lbs
353215	1/2" x 600'	White	8900 lbs	52 lbs
353220	5/8" x 600'	White	13800 lbs	83 lbs
353225	3/4" x 600'	White	17800 lbs	113 lbs



12 Strand Spectra®

Spectra® is a high strength, low stretch rope with excellent abrasion resistance and a single braid construction. More than 3 times stronger than polyester with less than half of the elongation. Spectra® is ideal for commercial fishing, mooring and tug lines, tow and winch lines, pulling lines and theatrical rigging lines. Polyurethane finish.

Features:

- Torque-free and easy to splice
- Larger sizes available on request

Item #	Dimensions	Color	Tensile	Weight
353344	1/8" x 600'	Grey	1800 lbs	4 lbs
353343	3/16" x 600'	Grey	3600 lbs	6 lbs
353346	1/4" x 600'	Grey	6000 lbs	10 lbs
353345	5/16" x 600'	Grey	9000 lbs	16 lbs
353349	3/8" x 600'	Grey	13900 lbs	22 lbs
353348	3/8" x 1200'	Grey	13900 lbs	44 lbs
353352	7/16" x 600'	Grey	14800 lbs	25 lbs
353350	1/2" x 600'	Grey	22500 lbs	39 lbs
353355	5/8" x 600'	Grey	36600 lbs	64 lbs
353358	3/4" x 600'	Grey	43300 lbs	80 lbs



12 Strand Dymax®

Dymax® is a Dyneema® rope with strength comparable to wire rope at a fraction of the weight. It floats, making it ideal for commercial fishing, mooring and tug lines, tow and winch lines, pulling lines and theatrical rigging lines. Polyurethane finish.

Features:

- Very low stretch with very high strength
- Larger sizes available on request

Item #	Dimensions	Color	Tensile	Weight
353424	1/8" x 600'	Grey	1600 lbs	3 lbs
353422	3/16" x 600'	Grey	3700 lbs	6 lbs
353423	1/4" x 600'	Grey	6700 lbs	10 lbs
353421	5/16" x 600'	Grey	9700 lbs	16 lbs
353426	3/8" x 600'	Grey	14000 lbs	22 lbs
353429	3/8" x 1200'	Grey	14000 lbs	43 lbs
353427	1/2" x 600'	Grey	25000 lbs	38 lbs
353428	5/8" x 600'	Grey	37000 lbs	62 lbs
353432	3/4" x 600'	Grey	47000 lbs	80 lbs



12 Strand Plasma®

Our Plasma® 12 strand is the highest strength, lowest creep synthetic rope available. Made with high modulus polyethylene fiber (HMPE) enhanced by a patented recrystallization process, this rope can be used to replace wire rope. Easy to splice. Useful for mooring lines, barge lines, lifting slings, winch lines and theatrical rigging.

Features:

- Suitable replacement for wire rope
- Polyurethane finish
- Larger sizes available on request

Item #	Dimensions	Color	Tensile	Weight
353501	3/16" x 600'	Violet	5500 lbs	7 lbs
353502	1/4" x 600'	Violet	8000 lbs	10 lbs
353500	5/16" x 600'	Violet	11700 lbs	15 lbs
353503	3/8" x 600'	Violet	17500 lbs	22 lbs
353505	7/16" x 600'	Violet	21000 lbs	25 lbs
353507	1/2" x 600'	Violet	31300 lbs	39 lbs



12 Strand SuperMax® II

SuperMax II is an ultra high molecular weight polyethylene (UHMWPE), Dyneema® SK75 fiber braided rope. It offers the strongest tensile strength per weight available. This rope is stronger than wire rope of the same diameter, at 1/8 the weight. A special heat treatment enhances its anti-abrasion characteristics.

Features:

- Very low stretch with very high strength
- Strength is comparable to wire rope
- Long life and easy handling
- Non-kinking and non-rotational
- Easy to splice
- Larger sizes available on request

Item #	Dimensions	Color	Tensile	Weight
353438	1/4" x 600'	Orange	8910 lbs	9 lbs
353442	5/16" x 600'	Orange	13750 lbs	15 lbs
353446	3/8" x 600'	Orange	19690 lbs	21 lbs
353450	7/16" x 600'	Orange	23650 lbs	25 lbs
353454	1/2" x 600'	Orange	35090 lbs	37 lbs
353462	3/4" x 600'	Orange	75790 lbs	83 lbs
353466	1" x 600'	Orange	123200 lbs	140 lbs
353470	2" x 600'	Orange	398200 lbs	497 lbs



12 Strand SuperMax® ATV Winch Line

Super Max™ ATV Winch Line also an ultra high molecular weight (UHMWPE) fiber braided with SK75 Dyneema® fibers. Super Max™ 12 strand is stronger than wire rope of same diameter, and is 1/8 the weight. This rope has superior strength, it floats and has an elongation break at 4-5%. Easy to splice and handle.

Features:

- Galvanized thimble on one end for towing
- Comparable to steel wire rope in strength
- Very low elongation and superior abrasion resistance
- Non-kinking and non-rotational

Item #	Dimensions	Color	Tensile	Weight
353498	3/16" x 50'	Orange	5500 lbs	1 lbs
353499	3/16" x 100'	Orange	5500 lbs	2 lbs





Nylon Double Braid

High strength, high stretch and torque-free, this rope features a nylon core inside a soft flexible nylon cover. High elongation and excellent shock absorption properties make nylon ideal for applications involving shock loads. Good resistance to abrasion, UV rays and many common chemicals.

Features:

- Soft-hand feel
- Suited for mooring and anchor lines
- Easy to knot or splice

CWC Premium

Made from the highest quality UV-stabilized yarns, this top quality nylon cord is the top double braid choice for marine and industrial usage.

Item #	Dimensions	Color	Tensile	Weight
345016	3/16" x 600'	White w/Blue Tracer	1150 lbs	9 lbs
345015	1/4" x 600'	White w/Blue Tracer	2080 lbs	10 lbs
345025	5/16" x 600'	White w/Blue Tracer	3263 lbs	16 lbs
345035	3/8" x 600'	White w/Blue Tracer	4625 lbs	22 lbs
345045	7/16" x 600'	White w/Blue Tracer	6313 lbs	31 lbs
345050	1/2" x 600'	White w/Blue Tracer	8156 lbs	40 lbs
345060	5/8" x 600'	White w/Blue Tracer	13200 lbs	62 lbs
346070	3/4" x 600'	White w/Blue Tracer	19085 lbs	90 lbs
346107	7/8" x 600'	White w/Blue Tracer	25700 lbs	122 lbs
346110	1" x 600'	White w/Blue Tracer	33200 lbs	160 lbs
346125	1-1/8" x 600'	White w/Blue Tracer	41580 lbs	202 lbs
346127	1-1/4" x 600'	White w/Blue Tracer	51000 lbs	249 lbs
346130	1-1/2" x 600'	White w/Blue Tracer	72600 lbs	358 lbs
346137	1-3/4" x 600'	White w/Blue Tracer	98200 lbs	486 lbs
346140	2" x 600'	White w/Blue Tracer	127930 lbs	636 lbs

Pro Series

White	Black	Gold/Wht	Dimensions	Tensile	Weight
345101	345099	345014	1/4" x 600'	2000 lbs	9 lbs
345109			5/16" x 600'	3150 lbs	14 lbs
345111	345110	345012	3/8" x 600'	4400 lbs	20 lbs
345112	345120	345013	1/2" x 600'	7800 lbs	36 lbs
345113	345115	345011	5/8" x 600'	12200 lbs	59 lbs
345114	346075	346069	3/4" x 600'	17350 lbs	86 lbs
345116	346108		7/8" x 600'	23400 lbs	127 lbs
345117			1" x 600'	30250 lbs	160 lbs



Polyester Double Braid

Leader among all popular fibers for weatherability characteristics, polyester exhibits excellent abrasion resistance and strength, wet or dry. Good resistance to UV light and most common chemicals. This very-low stretch rope offers excellent gripping properties and a torque-free construction.

Features:

- Low stretch and high strength
- Holds up better than nylon in sunlight
- Great abrasion resistance
- Will not rot or deteriorate

CWC Premium

This polyester double braid features a super-low stretch radial construction, which provides maximum abrasion resistance and reduces the risk of snag, and virtually eliminates any chance of core herniation.

Item #	Dimensions	Color	Tensile	Weight
347005	3/16" x 600'	White w/Grn Tracer	1200 lbs	10 lbs
347020	1/4" x 600'	White w/Grn Tracer	2000 lbs	12 lbs
347030	5/16" x 600'	White w/Grn Tracer	3089 lbs	19 lbs
347040	3/8" x 600'	White w/Grn Tracer	4468 lbs	27 lbs
347050	7/16" x 600'	White w/Grn Tracer	6030 lbs	37 lbs
347060	1/2" x 600'	White w/Grn Tracer	7894 lbs	48 lbs
347100	5/8" x 600'	White w/Grn Tracer	12274 lbs	75 lbs
348110	3/4" x 600'	White w/Grn Tracer	17600 lbs	107 lbs
348123	7/8" x 600'	White w/Grn Tracer	23700 lbs	146 lbs
348125	1" x 600'	White w/Grn Tracer	30900 lbs	191 lbs
348130	1-1/8" x 600'	White w/Grn Tracer	39100 lbs	242 lbs
348131	1-1/4" x 600'	White w/Grn Tracer	48125 lbs	299 lbs

Pro Series

Item #	Dimensions	Color	Tensile	Weight
347141	3/16" x 600'	White w/Grn Tracer	1200 lbs	10 lbs
347142	1/4" x 600'	White w/Grn Tracer	1935 lbs	11 lbs
347143	5/16" x 600'	White w/Grn Tracer	2947 lbs	18 lbs
347144	3/8" x 600'	White w/Grn Tracer	4275 lbs	25 lbs
347145	7/16" x 600'	White w/Grn Tracer	5725 lbs	33 lbs
347146	1/2" x 600'	White w/Grn Tracer	7425 lbs	45 lbs
347147	5/8" x 600'	White w/Grn Tracer	11250 lbs	72 lbs
347148	3/4" x 600'	White w/Grn Tracer	16000 lbs	101 lbs



Solid Braid Nylon

CWC solid braid nylon is an extremely strong, soft, lightweight, general purpose rope with excellent resistance to rot, abrasion, mildew, petroleum products and most chemicals. This rope's shock-absorbing elasticity allows it to withstand great strain under shock loads. The solid construction stays round and works well in pulleys.

Features:

- Lightweight multipurpose rope
- Flexible and easy to knot
- Strong and shock absorbent

Spools

White	Black	Size	Dimensions	Tensile	Weight
105005		#3	3/32" x 1000'	185 lbs	3 lbs
105003		#4	1/8" x 600'	575 lbs	4 lbs
105025	105026	#4	1/8" x 1000'	575 lbs	5 lbs
105030		#5	5/32" x 500'	720 lbs	4 lbs
105035		#5	5/32" x 1000'	720 lbs	7 lbs
105140		#6	3/16" x 475'	825 lbs	5 lbs
105045		#6	3/16" x 500'	825 lbs	5 lbs
105050	105048	#6	3/16" x 1000'	825 lbs	9 lbs
	105031	#6	3/16" x 3000'	825 lbs	25 lbs
105054	105055	#7	7/32" x 1000'	975 lbs	11 lbs
105145		#8	1/4" x 200'	1325 lbs	4 lbs
105060		#8	1/4" x 500'	1325 lbs	8 lbs
105065		#8	1/4" x 1000'	1325 lbs	15 lbs
105150		#10	5/16" x 175'	1925 lbs	5 lbs
105097		#10	5/16" x 200'	1925 lbs	5 lbs
105100		#10	5/16" x 500'	1925 lbs	13 lbs
105105		#10	5/16" x 1000'	1925 lbs	26 lbs
105110		#12	3/8" x 100'	2800 lbs	4 lbs
105112		#12	3/8" x 125'	2800 lbs	5 lbs
105114		#12	3/8" x 400'	2800 lbs	16 lbs
105115	105118	#12	3/8" x 500'	2800 lbs	18 lbs
105120		#12	3/8" x 1000'	2800 lbs	39 lbs
105127		#16	1/2" x 80'	4200 lbs	6 lbs
105129		#16	1/2" x 250'	4200 lbs	16 lbs
105131		#16	1/2" x 300'	4200 lbs	19 lbs
105130	105134	#16	1/2" x 500'	4200 lbs	31 lbs
105135		#16	1/2" x 1000'	4200 lbs	61 lbs

Solid Braid Nylon - Hanks

Item #	Size	Dimensions	Color	Units	Tensile	Weight
105735	#4	1/8" x 50'	White	Each	575 lbs	3 lbs
105218	#4	1/8" x 100'	White	Each	575 lbs	6 lbs
105233	#6	3/16" x 50'	White	Each	825 lbs	5 lbs
105235	#6	3/16" x 100'	White	Each	825 lbs	9 lbs
105240	#8	1/4" x 50'	White	Dozen	1325 lbs	9 lbs
105245	#8	1/4" x 100'	White	Dozen	1325 lbs	9 lbs
105246	#8	1/4" x 100'	White	Each	1325 lbs	2 lbs



Solid Braid Polyester

One of the strongest and most durable braided cords available, solid braid polyester offers higher strength than polypropylene and much less stretch than nylon. Great resistance to abrasion, UV light, rot, mildew and most common chemicals. Well suited to marine and industrial applications.

Features:

- Strong, low stretch and firm construction
- Works extremely well in pulleys
- Very smooth construction

Item #	Size	Dimensions	Color	Put up	Tensile	Weight
110003	#4	1/8" x 1000'	White	Spool	400 lbs	6 lbs
110110	#4	1/8" x 1000'	Black	Spool	400 lbs	6 lbs
110007	#4	1/8" x 3000'	White	Spool	400 lbs	16 lbs
110004	#5	5/32" x 500'	White	Spool	550 lbs	4 lbs
110115	#5	5/32" x 500'	Black	Spool	550 lbs	4 lbs
110025	#6	3/16" x 475'	White	Spool	820 lbs	6 lbs
110005	#6	3/16" x 1000'	White	Spool	820 lbs	10 lbs
110030	#8	1/4" x 200'	White	Spool	1300 lbs	4 lbs
110010	#8	1/4" x 1000'	White	Spool	1300 lbs	16 lbs
110011	#9	9/32" x 1000'	White	Spool	1450 lbs	21 lbs
110014	#10	5/16" x 500'	White	Spool	1750 lbs	16 lbs
110016	#12	3/8" x 500'	White	Spool	2700 lbs	19 lbs
110017	#12	3/8" x 1000'	White	Spool	2700 lbs	41 lbs
110018	#16	1/2" x 250'	White	Spool	4500 lbs	19 lbs
110019	#16	1/2" x 500'	White	Spool	4500 lbs	38 lbs

Hollow / Spun / Knit Braids



Hollow Braid Polypro

This strong, easy-to-splice polypropylene rope is one of the most versatile and economical ropes available today. It floats and has great resistance to UV light, oil, abrasion, marine growth and most common chemicals.

Features:

- Will not kink; torque-free
- Easy to splice

Colors

Yellow	Yel/Blk	Size	Dimensions	Tensile	Weight
100005		#4	1/8" x 1000'	185 lbs	2 lbs
100010		#6	3/16" x 500'	370 lbs	3 lbs
100015		#6	3/16" x 1000'	370 lbs	5 lbs
100020		#8	1/4" x 100'	440 lbs	1 lbs
100026		#8	1/4" x 400'	440 lbs	3 lbs
100030		#8	1/4" x 500'	440 lbs	4 lbs
100035	100303	#8	1/4" x 1000'	440 lbs	8 lbs
100055		#10	5/16" x 500'	880 lbs	6 lbs
100060		#10	5/16" x 1000'	880 lbs	12 lbs
100075		#12	3/8" x 500'	1850 lbs	9 lbs
100100		#12	3/8" x 1000'	1850 lbs	18 lbs
100105		#16	1/2" x 300'	2600 lbs	8 lbs
100110		#16	1/2" x 500'	2600 lbs	13 lbs
100115		#16	1/2" x 1000'	2600 lbs	26 lbs
100130		#20	5/8" x 500'	3700 lbs	26 lbs
100140		#24	3/4" x 500'	4600 lbs	33 lbs

Orange	Black	Size	Dimensions	Tensile	Weight
100047	100306	#8	1/4" x 1000'	440 lbs	8 lbs
	100305	#8	1/4" x 3000'	440 lbs	24 lbs
100320		#10	5/8" x 500'	880 lbs	6 lbs

Green	White	Size	Dimensions	Tensile	Weight
100292		#6	3/16" x 660'	370 lbs	4 lbs
100295		#8	1/4" x 660'	440 lbs	5 lbs
100304	100040	#8	1/4" x 1000'	440 lbs	8 lbs
100296		#8	1/4" x 1320'	440 lbs	11 lbs
100297		#10	5/16" x 660'	880 lbs	8 lbs
100298	100086	#12	3/8" x 600'	1850 lbs	10 lbs
100299		#16	1/2" x 600'	2600 lbs	14 lbs



Spun Braid Polyester

High strength spun-braided polyester rope features a loose weave 8 strand diamond-braid that splices easily. Soft like cotton, polyester offers superior strength and resistance to rot, mildew and common chemicals.

Features:

- Soft feel for haltering and leading animals
- Does not absorb water

Item #	Dimensions	Color	Weight
216013	1/2" x 300'	White	10 lbs
216043	1/2" x 600'	White	16 lbs
216023	5/8" x 300'	White	19 lbs



Neo Braid Nylon

This economical knit braid nylon cord is strong, lightweight and flexible. Its shock-absorbing elasticity allows it to withstand great strain. Resists rot, abrasion and common chemicals.

Features:

- Strong, low stretch and firm construction
- UV, abrasion, rot and mildew resistant

Item #	Size	Dimensions	Color	Put up	Tensile	Weight
108012	#4	1/8" x 500'	White	Spool	425 lbs	3 lbs
108016	#4	1/8" x 600'	Black	Spool	425 lbs	3 lbs
108020	#4	1/8" x 1000'	White	Spool	425 lbs	5 lbs
108039	#6	3/16" x 475'	White	Spool	870 lbs	5 lbs
108045	#6	3/16" x 1000'	White	Spool	870 lbs	9 lbs
108058	#8	1/4" x 200'	White	Spool	1000 lbs	3 lbs
108060	#8	1/4" x 500'	White	Spool	1000 lbs	8 lbs
108065	#8	1/4" x 1000'	White	Spool	1000 lbs	15 lbs
108078	#10	5/16" x 175'	White	Spool	1600 lbs	5 lbs
108080	#10	5/16" x 500'	White	Spool	1600 lbs	14 lbs
108085	#10	5/16" x 1000'	White	Spool	1600 lbs	25 lbs
108088	#12	3/8" x 125'	White	Spool	2000 lbs	5 lbs
108090	#12	3/8" x 500'	White	Spool	2000 lbs	18 lbs
108095	#12	3/8" x 1000'	White	Spool	2000 lbs	36 lbs
108108	#16	1/2" x 80'	White	Spool	3400 lbs	5 lbs
108109	#16	1/2" x 250'	White	Spool	3400 lbs	15 lbs
108110	#16	1/2" x 500'	White	Spool	3400 lbs	27 lbs
108120	#20	5/8" x 500'	White	Spool	4500 lbs	47 lbs



3-Strand Pacific™ Manila

Premium abaca fiber manila rope is one of the strongest natural ropes available on the market today. It offers low stretch and good abrasion resistance. Poor chemical resistance. Not for use in wet conditions.

Features:

- Biodegradable

Coils

Item #	Dimensions	Color	Tensile	Weight
200005	3/16" x 3300 ft	Natural	405	45 lbs
200007	1/4" x 600 ft	Natural	540	12 lbs
200010	1/4" x 1250 ft	Natural	540	25 lbs
200015	1/4" x 2500 ft	Natural	540	50 lbs
200016	5/16" x 600 ft	Natural	900	16 lbs
200020	5/16" x 1725 ft	Natural	900	44 lbs
200025	3/8" x 600 ft	Natural	1215	25 lbs
200030	3/8" x 1200 ft	Natural	1215	50 lbs
200035	7/16" x 600 ft	Natural	1575	29 lbs
200045	1/2" x 600 ft	Natural	2385	42 lbs
200050	1/2" x 1200 ft	Natural	2385	84 lbs
200055	5/8" x 600 ft	Natural	3960	76 lbs
200060	5/8" x 1200 ft	Natural	3960	152 lbs
200065	3/4" x 600 ft	Natural	4860	95 lbs
200070	3/4" x 1200 ft	Natural	4860	190 lbs
200100	7/8" x 600 ft	Natural	6930	128 lbs
200108	1" x 100 ft	Natural	8100	26 lbs
200109	1" x 300 ft	Natural	8100	77 lbs
200110	1" x 600 ft	Natural	8100	154 lbs
200115	1" x 1200 ft	Natural	8100	308 lbs
200120	1-1/8" x 600 ft	Natural	10800	206 lbs
200130	1-1/4" x 600 ft	Natural	12150	238 lbs
200138	1-1/2" x 600 ft	Natural	16650	342 lbs
200151	2" x 600 ft	Natural	27900	612 lbs

Reels

Item #	Dimensions	Color	Tensile	Weight
201003	1/4" x 600 ft	Natural	540	11 lbs
201005	1/4" x 1200 ft	Natural	540	22 lbs
201007	5/16" x 600 ft	Natural	900	16 lbs
201015	3/8" x 600 ft	Natural	1215	25 lbs
201020	7/16" x 600 ft	Natural	1575	29 lbs
201025	1/2" x 600 ft	Natural	2385	42 lbs
201030	5/8" x 600 ft	Natural	3960	76 lbs
201035	3/4" x 600 ft	Natural	4860	95 lbs



4 Strand Pacific™ Manila w/Wire Core

CWC 4 strand manila rope offers low stretch, excellent abrasion resistance and a firmer lay than regular 3 strand. This provides a rounder surface for additional traction on sheaves and objects to be turned or gripped. 3/16" diameter wire core gives extra weight and stability.

Features:

- Stronger than 3 strand manila
- Used as safety line

Item #	Dimensions	Color	Tensile	Weight
203525	7/8" x 600'	Natural	6930 lbs	161 lbs



3 Strand Sisal Rope

Made from natural agave fiber, CWC sisal rope is both economic and biodegradable. Offering moderate stretch, this general-purpose rope is used for agriculture and shipping.

Features:

- Easy to grip and knots well
- Moderate strength and pliability
- Bundling rope for farming, shipping and DIY household projects

Item #	Dimensions	Color	Put-up	Tensile	Weight
208001	3/16" x 3300'	Natural	Coil	290 lbs	43 lbs
208003	3/16" x 2100'	Natural	Coil	290 lbs	27 lbs
208005	1/4" x 1500'	Natural	Coil	385 lbs	26 lbs
208010	1/4" x 2500'	Natural	Coil	385 lbs	44 lbs
208013	5/16" x 1035'	Natural	Coil	640 lbs	26 lbs
208015	5/16" x 1725'	Natural	Coil	640 lbs	43 lbs
208025	3/8" x 600'	Natural	Coil	865 lbs	22 lbs
208026	3/8" x 732'	Natural	Spool	865 lbs	26 lbs
208030	3/8" x 1200'	Natural	Coil	865 lbs	41 lbs
208032	3/8" x 2400'	Natural	Coil	865 lbs	86 lbs
208040	1/2" x 600'	Natural	Coil	1700 lbs	42 lbs
208050	5/8" x 600'	Natural	Coil	2815 lbs	64 lbs
208056	5/8" x 750'	Natural	Coil	2815 lbs	100 lbs
208065	3/4" x 600'	Natural	Coil	3455 lbs	80 lbs
208069	1" x 370'	Natural	Coil	5760 lbs	80 lbs
208070	1-1/4" x 300'	Natural	Coil	8640 lbs	64 lbs

Natural Fiber / Braided Cord



3 Strand Cotton Rope

Naturally soft and easy to work with, CWC cotton ropes offers a more supple feel than most synthetic ropes. Cotton will not induce rope burn as quickly as synthetic ropes, making it popular in the livestock industry. Good for braiding, spliceable and holds knots well.

Features:

- Stretch and abrasion resistant
- Works well in high heat

Coils

Item #	Dimensions	Color	Tensile	Weight
210005	3/16" x 2250'	White	250 lbs	25 lbs
210010	1/4" x 1200'	White	420 lbs	25 lbs
210030	5/16" x 600'	White	655 lbs	15 lbs
210020	3/8" x 600'	White	890 lbs	25 lbs
210035	1/2" x 600'	White	1450 lbs	38 lbs
210040	5/8" x 600'	White	2275 lbs	55 lbs
210045	3/4" x 300'	White	3100 lbs	40 lbs
210050	1" x 300'	White	5100 lbs	60 lbs

Reels

Item #	Dimensions	Color	Tensile	Weight
211005	3/8" x 600'	White	890 lbs	25 lbs
211015	1/2" x 600'	White	1450 lbs	38 lbs
211020	5/8" x 600'	White	2275 lbs	55 lbs
211025	3/4" x 300'	White	3100 lbs	40 lbs
211030	1" x 300'	White	5100 lbs	60 lbs



Braided Cotton Cord

Naturally soft and easy to work with, braided poly-cotton cord offers a more supple feel than many synthetic cords. Cotton is good for braiding and holds knots well.

Features:

- Multipurpose
- Works in lightweight pulley applications

Hanks

Item #	Size	Dimensions	Color	Units	Tensile	Weight
136061	#4	1/8" x 48'	Black	Dozen	175 lbs	3 lbs
136275	#4	1/8" x 48'	Glazed Wht	Dozen	175 lbs	3 lbs
136270	#4	1/8" x 48'	Glazed Blk	Dozen	175 lbs	3 lbs
136060	#4	1/8" x 50'	Black	Dozen	175 lbs	3 lbs
136065	#4.5	9/64" x 48'	White	Dozen	175 lbs	3 lbs

Spools

Item #	Size	Dimensions	Color	Units	Tensile	Weight
136078	#4	1/8" x 3000'	White	Each	175 lbs	14 lbs



Venetian Blind Cord

CWC Venetian blind cord is maypole braided cotton over a synthetic core. This is a great drapery and traverse cord. Stiffer than solid braid, this cord knots easily and is very flexible. Comes on spools.

Features:

- Lightweight and durable
- Works in lightweight pulley applications

Item #	Size	Dimensions	Color	Units	Tensile	Weight
160013	#4	1/8" x 600'	Black	Each	175 lbs	3 lbs
160019	#4	1/8" x 3000'	Black	Each	175 lbs	14 lbs
160021	#4	1/8" x 3000'	Glazed Blk	Each	175 lbs	14 lbs



Trick Line

Unglazed poly-cotton trick line is a strong and soft general-purpose braided cord used to tie cable or pull sets offstage. Also known as "tie line" or "theater string".

Features:

- Unglazed cord ideal for repeat tying
- Invisible in most stage environments

Item #	Dimensions	Color	Put up	Tensile	Units	Wt
160405	1/8" x 3000'	Black	Spool	200 lbs	1	13 lbs



Starter Cord

CWC starter cord offers excellent abrasion resistance and durability. Designed for pull start engines, this cord is optimized to resist gasoline, oil and many common chemicals.

Features:

- Constructed for repetitive strain
- Comes standard on spools

Item #	Size	Dimensions	Color	Units	Tensile	Wt
106110	#4	1/8" x 250'	White	1	330 lbs	2 lbs
106115	#4	1/8" x 1000'	White	1	330 lbs	8 lbs
106120	#5	5/32" x 250'	White	1	490 lbs	2 lbs
106122	#5	5/32" x 250'	Black	1	490 lbs	2 lbs
106125	#5	5/32" x 1000'	White	1	490 lbs	8 lbs
106130	#6	3/16" x 250'	White	1	760 lbs	3 lbs
106135	#6	3/16" x 1000'	White	1	760 lbs	12 lbs
106137	#8	1/4" x 100'	White	1	1610 lbs	2 lbs
106140	#8	1/4" x 250'	White	1	1610 lbs	5 lbs
106145	#8	1/4" x 1000'	White	1	1610 lbs	15 lbs



Braided Awning Cord

Sturdy and durable, CWC's awning cord is constructed with tight interlacing diamond braided cotton yarns, which utilizes core fibers for added strength. Comes on spools.

Features:

- Multipurpose
- Works in lightweight pulley applications

Item #	Size	Dimensions	Color	Units	Tensile	Weight
125105	#4	1/8" x 1500'	White	Each	175 lbs	8 lbs
125115	#5	5/32" x 1500'	White	Each	255 lbs	11 lbs
125120	#6	3/16" x 1500'	White	Each	450 lbs	13 lbs



Sensor Cord

High-strength diamond braid sensor cord. Excellent resistance to abrasion, chemicals and weather, is designed to not rot, mildew, or sink in water.

Features:

- High strength, low stretch
- Polyester, polypropylene or Kevlar

Item #	Size	Dimensions	Color	Type	Tensile	Wt
116051	#4	1/8" x 1000'	Yellow	Polypro	300 lbs	6 lbs
116052	#4	1/8" x 1000'	White	PE	470 lbs	6 lbs
116053	#4	1/8" x 1000'	Yellow	Kevlar	600 lbs	6 lbs



Flagpole Rope

Solid braid flagpole rope has a sash-type construction with a galvanized wire center protected by a solid-braided polyester jacket.

Features:

- Sturdy and durable
- Wire core secures rope from cutting
- Durable polyester jacket

Item #	Size	Dimensions	Color	Put up	Tensile	Wt
164005	#8	1/4" x 500'	White	Spool	750 lbs	18 lbs
164010	#8	1/4" x 1000'	White	Spool	750 lbs	36 lbs
164014	#10	5/16" x 500'	White	Spool	750 lbs	24 lbs
164015	#10	5/16" x 1000'	White	Spool	750 lbs	47 lbs
164030	#12	3/8" x 500'	White	Spool	750 lbs	30 lbs



Zenith Braid

Braided polyester jacket with natural polyester core. Does not float.

Features:

- Less than 1% stretch at 30% break strength
- No back turning or hockling
- Works excellent both wet and dry

Item #	Size	Dimensions	Color	Put up	Tensile	Wt
110401	#4	1/8" x 500'	Black	Spool	403 lbs	3 lbs
110402	#4	1/8" x 1000'	Black	Spool	403 lbs	5 lbs
110405	#4	1/8" x 3000'	White	Spool	403 lbs	12 lbs
110406	#4	1/8" x 3000'	Black	Spool	403 lbs	14 lbs



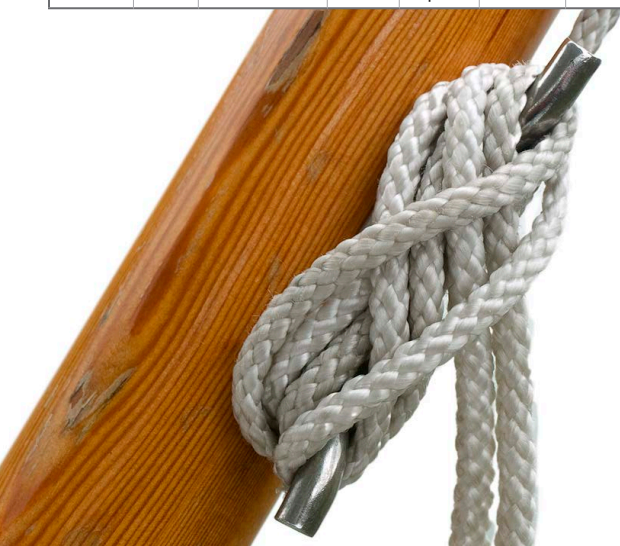
Paracord

CWC lightweight nylon kernmantle paracord is a general purpose utility cord great for tying equipment to harnesses or as dummy cords.

Features:

- Smooth, soft-hand feel
- Good stretch and versatility
- Great for camping and utility applications

Item #	Size	Dimensions	Color	Type	Tensile	Wt
161111	#4	1/8" x 1000'	White	Utility	185 lbs	3 lbs
161110	#4	1/8" x 1000'	Black	16 Carrier	185 lbs	3 lbs
161200	#6	#550 x 1000'	Yellow	32 Carrier	370 lbs	7 lbs
161210	#6	#550 x 1000'	Black	32 Carrier	370 lbs	7 lbs
161215	#6	#550 x 1000'	Brown	32 Carrier	370 lbs	7 lbs
161230	#6	#550 x 1000'	Green	32 Carrier	370 lbs	7 lbs
161240	#6	#550 x 1000'	White	32 Carrier	370 lbs	7 lbs



Braided / Sash Cord



MFP Utility/Camping Rope

One of our most economical and popular utility ropes, diamond braid MFP utility/camping rope is made from high strength, multifilament polypropylene fiber. It is compact and easy to knot, making it an ideal general-duty tie down rope. It floats, will not shrink, mildew or rot, which makes it a great choice for recreational boating and camping. Resists UV light, oil, grease and many common chemicals.

Features:

- Lightweight and durable
- Ideal camping & recreational boating rope
- 16 carrier construction
- Most put-ups available is a variety of color combinations

Item #	Size	Dimensions	Color	Put up	Units	Wt
161005	#4	1/8" x 48'	White	Hank	12	2 lbs
161010	#4	1/8" x 100'	White	Hank	12	5 lbs
115660	#8	1/4" x 50'	Assorted	Hank	12	7 lbs
115275	#8	1/4" x 100'	White	Hank	12	14 lbs
115661	#8	1/4" x 100'	Assorted	Hank	12	14 lbs
115662	#10	5/16" x 50'	Assorted	Hank	12	12 lbs
115663	#10	5/16" x 100'	Assorted	Hank	12	24 lbs
115664	#12	3/8" x 50'	Assorted	Hank	12	12 lbs
115007	#12	3/8" x 100'	Assorted	Hank	6	9 lbs
115297	#12	3/8" x 100'	Camo	Hank	6	9 lbs
115667	#16	1/2" x 50'	Assorted	Hank	6	7 lbs
115668	#16	1/2" x 100'	Assorted	Hank	6	14 lbs



Clothesline

Our poly-cotton clothesline is durable, strong and easy to knot. Its solid braid construction is flexible and easy to handle. Hanks packaged one dozen per carton.

Features:

- Stretch and abrasion resistant
- Good general utility project rope.

Item #	Size	Dimensions	Color	Put up	Tensile	Wt
130005	#6	3/16" x 50'	White	Hank	700 lbs	5 lbs
130010	#6	3/16" x 100'	White	Hank	700 lbs	10 lbs



Weeping Cord

CWC poly-cotton weeping cord provides excellent absorption to wick out water from behind bricks or blocks. Soft-hand cotton feel. Hanks packaged one dozen per carton.

Features:

- Excellent water absorption
- Shrink wrap protects cord from dust & dirt

Item #	Size	Dimensions	Color	Put up	Tensile	Wt
124708	#8	1/4" x 100'	Natural	Hank	180 lbs	16 lbs
124710	#10	5/16" x 100'	Natural	Hank	230 lbs	23 lbs
124715	#12	3/8" x 100'	Natural	Hank	250 lbs	29 lbs



PRO SERIES Sash Cord

CWC's all-purpose PRO SERIES cotton sash cord features polyester reinforced core and is resistant to fire. Generally used for traditional sash windows, this cord works well in a variety of applications.

Features:

- Cotton blended jacket
- Easy to knot

Hanks

Item #	Size	Dimensions	Color	Units	Tensile	Weight
124600	#6	3/16" x 100'	White	Dozen	230 lbs	8 lbs
124603	#7	7/32" x 100'	White	Dozen	463 lbs	12 lbs
124605	#8	1/4" x 100'	White	Dozen	675 lbs	12 lbs
124610	#10	5/16" x 100'	White	Dozen	717 lbs	31 lbs
124615	#12	3/8" x 100'	White	Dozen	1200 lbs	31 lbs
124618	#16	1/2" x 100'	White	Dozen	1500 lbs	50 lbs

Spools

Item #	Size	Dimensions	Color	Units	Tensile	Weight
124002	#4	1/8" x 3000'	White	Each	123 lbs	11 lbs
124630	#6	3/16" x 1200'	White	Each	230 lbs	8 lbs
124620	#8	1/4" x 400'	White	Each	675 lbs	7 lbs
124635	#8	1/4" x 1200'	White	Each	675 lbs	16 lbs
124621	#10	5/16" x 400'	White	Each	717 lbs	9 lbs
124640	#10	5/16" x 1200'	White	Each	717 lbs	22 lbs
124622	#12	3/8" x 400'	White	Each	1200 lbs	13 lbs
124645	#12	3/8" x 1200'	White	Each	1200 lbs	36 lbs



Glazed Sash Cord

CWC glazed sash cord is durable braided poly-cotton cord that wears and knots well. It features a glazed weather-resistant coating, making it ideal for outdoor use.

Features:

- Weather-resistant glaze coating
- Works well for a variety of applications

Hanks

Item #	Size	Dimensions	Color	Units	Tensile	Weight
124030	#6	3/16" x 100'	White	Dozen	700 lbs	10 lbs
124116	#6	3/16" x 100'	Black	Dozen	700 lbs	10 lbs
124032	#8	1/4" x 100'	Black	Dozen	900 lbs	14 lbs
124033	#8	1/4" x 100'	White	Dozen	900 lbs	14 lbs
124037	#10	5/16" x 100'	White	Dozen	1400 lbs	24 lbs
124118	#10	5/16" x 100'	Black	Dozen	1400 lbs	24 lbs
124043	#12	3/8" x 100'	White	Dozen	1600 lbs	28 lbs
124119	#12	3/8" x 100'	Black	Dozen	1600 lbs	28 lbs

Spool

Item #	Size	Dimensions	Color	Units	Tensile	Weight
124114	#6	3/16" x 1200'	Black	Each	700 lbs	13 lbs
124117	#8	1/4" x 1200'	Black	Each	900 lbs	20 lbs
124120	#10	5/16" x 1200'	Black	Each	1400 lbs	32 lbs
124110	#12	3/8" x 1200'	White	Each	1600 lbs	44 lbs



CWC SPOT Sash Cord

CWC SPOT poly-cotton braided sash cord offers higher strength and less stretch and wear than standard sash cord.

Features:

- Good strength, low stretch
- Resists mildew and rot

Hanks

Item #	Size	Dimensions	Color	Units	Tensile	Wt
123015	#8	1/4" x 100'	Wht w/Red Trcr	Dozen	1000 lbs	22 lbs
123020	#10	5/16" x 100'	Wht w/Red Trcr	Dozen	1850 lbs	33 lbs
123025	#12	3/8" x 100'	Wht w/Red Trcr	Dozen	2400 lbs	44 lbs

Spools

Item #	Size	Dimensions	Color	Units	Tensile	Wt
123080	#8	1/4" x 1200'	Wht w/Red Trcr	Each	1000 lbs	24 lbs
123090	#10	5/16" x 1200'	Wht w/Red Trcr	Each	1850 lbs	39 lbs
123095	#12	3/8" x 1200'	Wht w/Red Trcr	Each	2400 lbs	48 lbs



CWC Premium Sash Cord

CWC Premium sash cord offers higher strength and less stretch than typical sash cord. Featuring a cotton blended jacket over a synthetic core, this durable multipurpose cord works well in a variety of applications.

Features:

- Interlocking solid braid construction
- Good weatherability

Hanks

Item #	Size	Dimensions	Color	Units	Tensile	Weight
120005	#6	3/16" x 100'	White	Dozen	240 lbs	10 lbs
124350	#6	3/16" x 100'	Black	Dozen	240 lbs	10 lbs
120010	#7	7/32" x 100'	White	Dozen	340 lbs	14 lbs
120015	#8	1/4" x 100'	White	Dozen	750 lbs	17 lbs
124355	#8	1/4" x 100'	Black	Dozen	750 lbs	17 lbs
120020	#10	5/16" x 100'	White	Dozen	1200 lbs	27 lbs
120025	#12	3/8" x 100'	White	Dozen	1475 lbs	39 lbs
120030	#16	1/2" x 100'	White	Dozen	1700 lbs	53 lbs

Spools

Item #	Size	Dimensions	Color	Units	Tensile	Weight
120031	#6	3/16" x 1200'	White	Each	240 lbs	12 lbs
120041	#8	1/4" x 1200'	White	Each	750 lbs	20 lbs
120046	#10	5/16" x 1200'	White	Each	1200 lbs	32 lbs
120033	#12	3/8" x 600'	White	Each	1475 lbs	22 lbs
120051	#12	3/8" x 1200'	White	Each	1475 lbs	44 lbs
120052	#16	1/2" x 1000'	White	Each	1700 lbs	57 lbs



Crab / Fishing Rope



CWC BLUE STEEL™ Floating Crab Rope

Exclusive to CWC, this hard-lay, high strength, 3 strand copolymer fiber rope offers excellent resistance to UV light, abrasion, rot, oil and common chemicals. 35-40% stronger than polypropylene crab rope, with lower stretch. Trademark teal blue with dark blue tracer.

Features:

- Hard lay, high strength copolymer fibers
- Flexible non-rotating construction
- Excellent abrasion resistance

Item #	Dimensions	Color	Tensile	Weight
415302	5/16" x 600'	Teal w/Dk Blue Tracer	2650 lbs	18 lbs
415300	5/16" x 1200'	Teal w/Dk Blue Tracer	2650 lbs	36 lbs
415303	3/8" x 600'	Teal w/Dk Blue Tracer	3740 lbs	23 lbs
415305	3/8" x 1200'	Teal w/Dk Blue Tracer	3740 lbs	46 lbs
415310	7/16" x 1200'	Teal w/Dk Blue Tracer	4730 lbs	60 lbs
415315	1/2" x 1200'	Teal w/Dk Blue Tracer	6160 lbs	77 lbs
415306	9/16" x 600'	Teal w/Dk Blue Tracer	7850 lbs	50 lbs
415307	9/16" x 1200'	Teal w/Dk Blue Tracer	7850 lbs	100 lbs
415312	5/8" x 1200'	Teal w/Dk Blue Tracer	9970 lbs	125 lbs



SILVER PACIFIC™ Floating Crab Rope

SILVER PACIFIC™ floating crab rope is made from hard-lay, high-strength copolymer fibers. This versatile rope offers excellent abrasion resistance and low stretch. Built to withstand rot, mildew and many common chemicals. Distinctive silver with dark blue tracer.

Features:

- Super strong co-extrusion polyolefin
- Hard lay, high strength fibers
- Flexible non-rotating construction
- Excellent abrasion resistance

Item #	Dimensions	Color	Tensile	Weight
415005	5/16" x 1200'	Silver w/Blu/Org Tracers	2740 lbs	32 lbs
415010	3/8" x 1200'	Silver w/Blu/Org Tracers	3470 lbs	42 lbs
415015	7/16" x 1200'	Silver w/Blu/Org Tracers	4530 lbs	57 lbs
415020	1/2" x 1200'	Silver w/Blu/Org Tracers	5880 lbs	73 lbs
415022	9/16" x 1200'	Silver w/Blu/Org Tracers	6840 lbs	86 lbs



CWC SuperTEC® Floating Crab Rope

CWC SuperTEC™ floating crab rope is manufactured using new copolymer technology, making this rope 10% stronger than other floating crab ropes of the same diameter. It offers low stretch and excellent resistance to abrasion, marine growth, rot, and many common chemicals.

Features:

- High strength and low stretch
- Flexible hard lay construction
- Resists marine growth

Item #	Dimensions	Color	Tensile	Weight
415269	3/8" x 1200'	Lt Blu w/Dk Blu Tracers	4200 lbs	46 lbs
415271	7/16" x 1200'	Lt Blu w/Dk Blu Tracers	5300 lbs	60 lbs
415272	1/2" x 1200'	Lt Blu w/Dk Blu Tracers	7000 lbs	77 lbs
415277	9/16" x 1200'	Lt Blu w/Dk Blu Tracers	8000 lbs	100 lbs



CWC SuperTEC PLUS® Neutral Buoyancy Crab Rope

CWC SuperTEC PLUS™ crab rope delivers neutral buoyancy, high strength, low stretch and excellent resistance to abrasion, marine growth, rot and many common chemicals.

Item #	Dimensions	Color	Tensile	Weight
415265	3/8" x 1200'	Orange w/Wht Tracer	3025 lbs	54 lbs
415266	7/16" x 1200'	Orange w/Wht Tracer	3795 lbs	68 lbs
415267	1/2" x 1200'	Orange w/Wht Tracer	5300 lbs	87 lbs
415275	5/8" x 1200'	Orange w/Wht Tracer	6100 lbs	114 lbs



CWC SuperTEC® Combo Sinking Crab Line

CWC SuperTEC™ Combo sinking crab rope delivers outstanding strength and excellent resistance to abrasion, marine growth, rot and many common chemicals.

Item #	Dimensions	Description	Tensile	Weight
415270	3/8" x 1200'	Lt Blue w/Org Tracers	3718 lbs	54 lbs
415513	7/16" x 1200'	Lt Blue w/Org Tracers	3980 lbs	68 lbs
415514	1/2" x 1200'	Lt Blue w/Org Tracers	5140 lbs	87 lbs



Solid Braid Polyester Sinking Crab Rope

Solid braid polyester features a very smooth surface and is one of the strongest and most durable crab ropes available.

Features:

- Superior resistance to UV & marine growth
- Flexible construction
- Withstands acid, oil and electrical discharge

Item #	Size	Dimensions	Color	Tensile	Weight
327500	#8	1/4" x 1000'	White	1023 lbs	18 lbs
327505	#9	9/32" x 1000'	White	1250 lbs	45 lbs
327510	#10	5/16" x 1000'	White	1600 lbs	27 lbs
327515	#12	3/8" x 1000'	White	2300 lbs	44 lbs



Cotton Escape Cord

Cotton escape cord (also known as rot cord) is designed for use in crab traps and fish nets, so that if lost, the cord will degrade and crabs can escape. This cord meets guidelines from the Department of Fisheries.

Features:

- 100% biodegradable cotton
- Fishing and crabbing applications

Item #	Size	Ft/lb	Description	Weight
137160	#30	640'	100% Natural Cotton	2 lbs
137170	#60	120'	100% Natural Cotton	2 lbs
137199	#120	160'	100% Natural Cotton	2 lbs
137200	#120	160'	100% Natural Cotton	5 lbs



Sinking Lobster Rope

CWC sinking lobster ropes deliver outstanding tensile strength and resistance to abrasion, rot, marine growth and common chemicals. Hard lay, high strength.

Item #	Dimensions	Description	Tensile	Weight
403120	5/16" x 1800'	Ice Blue™ Combo	2215 lbs	45 lbs
403135	11/32" x 1800'	Ice Blue™ Combo	2821 lbs	79 lbs
403110	3/8" x 1200'	Ice Blue™ Combo	3470 lbs	46 lbs
403125	7/16" x 1200'	Ice Blue™ Combo	4530 lbs	65 lbs
310025	1/2" x 1200'	Steel Pro™	5880 lbs	79 lbs



Oyster Rope

CWC polypropylene oyster rope features a plied yarn construction and proprietary formulation and twist. Used for seeding in oyster farming operations. Rope offers good strength and resistance to abrasion, UV, rot and common chemicals.

Features:

- High strength, flexible construction
- Proprietary formulation and twist

Item #	Dimensions	Color	Tensile	Weight
300041	1/4" x 1200'	Yellow	1125 lbs	15 lbs
300043	1/4" x 1200'	Black	1125 lbs	15 lbs
300061	5/16" x 1200'	Yellow	1710 lbs	22 lbs

Crab / Fishing Rope



CWC BLUE STEEL™ Purple Lines

CWC BLUE STEEL™ 12 strand purple lines are designed to support fishing nets. These lines feature torque-free construction that will not kink, hockle or flatten out. Splices easily.

Features:

- Excellent strength and abrasion resistance
- Seasonal: Check for availability

Item #	Dimensions	Description	Tensile	Wt
353301	3/4" x 1050'	Teal w/Blu Tracers w/EEE	17500 lbs	131 lbs
353326	3/4" x 1080'	Teal w/Blu Tracers w/EEE	17500 lbs	135 lbs
353338	3/4" x 1110'	Teal w/Blu Tracers w/EEE	17500 lbs	139 lbs
353327	3/4" x 1200'	Teal w/Blu Tracers w/EEE	17500 lbs	150 lbs
353309	7/8" x 900'	Teal w/Blu Tracers w/EEE	23300 lbs	153 lbs
353329	7/8" x 1080'	Teal w/Blu Tracers w/EEE	23300 lbs	184 lbs
353331	7/8" x 1110'	Teal w/Blu Tracers w/EEE	23300 lbs	189 lbs
353333	7/8" x 1200'	Teal w/Blu Tracers w/EEE	23300 lbs	204 lbs
353336	7/8" x 1230'	Teal w/Blu Tracers w/EEE	23300 lbs	209 lbs
353302	3/4" x 900'	Teal w/Blu Tracers w/EEE	27700 lbs	82 lbs
353303	1" x 900'	Teal w/Blu Tracers w/EEE	27700 lbs	151 lbs
353332	1" x 840'	Teal w/Blu Tracers w/EEE	27700 lbs	163 lbs
353340	1" x 1200'	Teal w/Blu Tracers w/EEE	27700 lbs	233 lbs
353339	1" x 1230'	Teal w/Blu Tracers w/EEE	27700 lbs	239 lbs
353341	1" x 2400'	Teal w/Blu Tracers w/EEE	27700 lbs	466 lbs
353337	1-1/8" x 780'	Teal w/Blu Tracers w/EEE	36900 lbs	207 lbs
353335	1-1/8" x 870'	Teal w/Blue Tracers	36900 lbs	254 lbs



Polyester Longline

Braided polyester longline cord for longline fishing and other low stretch fishing and marine applications.

Features:

- Traditional favorite of Hawaiian fishermen
- Available in firm lay or soft construction
- Good abrasion resistance & low elongation

Firm Lay

Item #	Dimensions	Type	Color	Tensile	Weight
503070	0.045" x 500 yd	Firm Lay	Gray	80 lbs	3 lbs
503075	0.075" x 500 yd	Firm Lay	Gray	140 lbs	4 lbs
503080	0.085" x 500 yd	Firm Lay	Gray	185 lbs	4 lbs
503085	0.095" x 500 yd	Firm Lay	Gray	250 lbs	4 lbs
503095	0.110" x 500 yd	Firm Lay	Gray	350 lbs	5 lbs
503105	0.125" x 500 yd	Firm Lay	Gray	450 lbs	6 lbs
503110	0.140" x 500 yd	Firm Lay	Gray	650 lbs	10 lbs
503115	0.155" x 500 yd	Firm Lay	Gray	800 lbs	11 lbs

Soft Lay

Gray	Red	Dimensions	Type	Tensile	Weight
503076	503077	0.075" x 500 yd	Soft Lay	140 lbs	2 lbs
503082	503083	0.085" x 500 yd	Soft Lay	185 lbs	2 lbs
503086	503087	0.095" x 500 yd	Soft Lay	250 lbs	4 lbs
503096	503097	0.110" x 500 yd	Soft Lay	350 lbs	4 lbs
503106	503107	0.125" x 500 yd	Soft Lay	450 lbs	6 lbs
503111	503112	0.140" x 500 yd	Soft Lay	650 lbs	9 lbs
503116	503113	0.155" x 500 yd	Soft Lay	800 lbs	10 lbs



Chafing Gear

Bulky and loosely twisted polyethylene fiber rope constructed to help protect fish netting and valuable gear from wear and abrasion.

Features:

- Abrasion and UV resistant
- Flexible construction

Item #	Diameter	Color	Weight
302107	1"	Multi-color	50 lbs
302106	1"	Multi-color	100 lbs



8 Braid CWC BLUE STEEL™

8 braid BLUE STEEL™ rope is one of the highest strength copolymer braided ropes in the market today. A staple of the marine and pleasure craft market, the high-tenacity UV resistant polyolefin yarn construction offers easy handling and excellent resistance to most common chemicals, mildew, marine growth, petroleum products and rot.

Features:

- 30-40% stronger than comparable polypropylene
- Rope floats: Specific gravity of 0.91
- Will not absorb water.
- Low stretch, easy to handle and splice



8 Braid Mooring Line

CWC offers a full selection of high-strength synthetic mooring lines. These non-torquing ropes are designed to exhibit excellent resistance to rot, mildew, marine growth, UV, abrasion and most common chemicals. From economical SUPER DYNA II™ to premium quality BLUE STEEL™, we carry the right line for your application.

Features:

- Torque-free construction will not twist
- Spliced eye on each end
- Protective jackets available

Super Dyna I

Item #	Dimensions	Description	Tensile	Weight
403645	1-5/8" x 720'	Blue w/EEE	43000 lbs	284 lbs
403647	2" x 720'	Blue w/EEE	64000 lbs	410 lbs
403652	2-1/4" x 720'	Blue w/EEE	88000 lbs	547 lbs
403655	2-1/2" x 720'	Blue w/EEE	100000 lbs	630 lbs
403662	2-5/8" x 720'	Blue w/EEE	115000 lbs	732 lbs
403665	3" x 720'	Blue w/EEE	146000 lbs	937 lbs
403670	3-1/4" x 720'	Blue w/EEE	175000 lbs	1140 lbs
403675	4" x 720'	Blue w/EEE	235900 lbs	1587 lbs

Super Dyna II - 8 Braid Mooring Line

Item #	Dimensions	Description	Tensile	Weight
403655	2-1/2" x 720'	Blue w/EEE	91500 lbs	518 lbs
403815	2-5/8" x 720'	Blue w/EEE	103500 lbs	596 lbs
403508	3" x 720'	Blue w/EEE	135000 lbs	778 lbs
403509	3-1/4" x 720'	Blue w/EEE	171000 lbs	991 lbs

HS Super Dan - 8 Braid Mooring Line

Item #	Dimensions	Description	Tensile	Weight
400223	2-5/8" x 720'	Wht w/Org & Blu Tracer	143000 lbs	895 lbs
400232	3" x 720'	Wht w/Org & Blu Tracer	181000 lbs	1132 lbs
400236	3-1/4" x 720'	Wht w/Org & Blu Tracer	219000 lbs	1403 lbs





8 Braid CWC SuperTEC®

CWC's SuperTEC® is one of the strongest polyolefin ropes available. For the same breaking strength, a smaller diameter can replace standard polypro rope. Highly resistant to abrasion, easy to handle, floats and does not absorb water.

Features:

- 23% stronger than high tenacity PP ropes
- 50-60% stronger than standard PP ropes
- Low stretch

Item #	Dimensions	Description	Tensile	Weight
402191	1" x 1200'	Lt Blu w/Navy Tracers	32400 lbs	233 lbs
402193	1-1/8" x 1200'	Lt Blu w/Navy Tracers	43100 lbs	318 lbs
402190	1-1/8" x 3600'	Lt Blu w/Navy Tracers	43100 lbs	954 lbs
402196	1-1/4" x 1200'	Lt Blu w/Navy Tracers	48500 lbs	363 lbs
402197	1-1/2" x 600'	Lt Blu w/Navy Tracers	68500 lbs	259 lbs
402280	1-5/8" x 600'	Lt Blu w/Navy Tracers	84500 lbs	319 lbs
402198	1-3/4" x 600'	Lt Blu w/Navy Tracers	100900 lbs	393 lbs
402157	2" x 600'	Lt Blu w/Navy Tracers	123600 lbs	482 lbs
402199	2-1/8" x 600'	Lt Blu w/Navy Tracers	142400 lbs	561 lbs
402192	2-1/2" x 600'	Lt Blu w/Navy Tracers	186300 lbs	747 lbs



8 Braid Poly-Dac

CWC 8 braid Poly-Dac offers a polyester yarn over monofilament polypro core yarn construction. Excellent abrasion and UV resistance, low stretch and excellent wear. Great resistance to mildew, rot, oil, grease and many common chemicals.

Features:

- Acid and alkali resistant
- Does not float

Item #	Dimensions	Color	Tensile	Weight
325188	2-1/2" x 600'	White	80000 lbs	648 lbs
406245	2-1/4" x 720'	White w/6' CCEEE	69000 lbs	674 lbs
406250	2-5/8" x 720'	White w/6' CCEEE	90000 lbs	868 lbs
406260	3" x 720'	White w/6' CCEEE	114000 lbs	1095 lbs
406265	3-1/4" x 720'	White w/6' CCEEE	137000 lbs	1335 lbs



8 Braid ICE BLUE™ COMBO

Made with high tenacity BLUE STEEL™ and polyester, ICE BLUE's 0.99 specific gravity construction allows this rope to float just under the surface of the water, making it great for mooring line, tow line, or barge lines.

Features:

- Hovers near the water's surface
- High strength, low stretch

Item #	Dimensions	Color	Tensile	Weight
403420	1-1/2" x 600'	Teal	55480 lbs	299 lbs
403425	1-3/4" x 600'	Teal	79610 lbs	423 lbs
403430	2" x 600'	Teal	92150 lbs	531 lbs
403437	2-1/4" x 600'	Teal	123595 lbs	722 lbs
403440	2-1/2" x 600'	Teal	140315 lbs	808 lbs
403450	3" x 600'	Teal	178400 lbs	1145 lbs



8 Braid CWC SuperTEC® Poly-Dac Combo

CWC SuperTEC® yarn over polypro core yarn construction. Great abrasion and UV resistance, low stretch and excellent wear.

Features:

- Does not float
- Additional sizes available by request

Item #	Dimensions	Description	Tensile	Weight
325148	1-5/8" x 600'	Wht w/2 Org Tracers	89200 lbs	394 lbs
325168	1-3/4" x 600'	Wht w/2 Org Tracers	105900 lbs	470 lbs
325175	2" x 600'	Wht w/2 Org Tracers	122600 lbs	591 lbs
325176	2-1/8" x 600'	Wht w/2 Org Tracers	142200 lbs	673 lbs
325189	2-1/2" x 600'	Wht w/2 Org Tracers	186700 lbs	898 lbs



8 Braid Nylon

8 braid nylon exhibits high elongation, high strength and great shock absorption. Good resistance to abrasion. Excellent resistance to UV rays, rot, mildew, oil, grease and most common chemicals. Does not float.

Features:

- Suited for shock loads
- Additional sizes available by request

Item #	Dimensions	Color	Tensile	Weight
409126	2" x 600'	White	92000 lbs	570 lbs
409136	3" x 600'	White	200000 lbs	1260 lbs



Nylon Dock Line

All CWC's nylon dock lines exhibit high elasticity, withstand rot, mildew and marine growth, and hold knots well. These lines are abrasion-resistant, and can be stored wet without damage to the fiber. Retail packaged.

Double Braid - White

Item #	Dimensions	Color	Tensile	Weight
350609	3/8" x 15'	White w/ 6" Eye	4625 lbs	1 lbs
350611	3/8" x 20'	White w/ 6" Eye	4625 lbs	1 lbs
350616	3/8" x 25'	White w/ 6" Eye	4625 lbs	1 lbs
350624	1/2" x 10'	White w/ 6" Eye	8156 lbs	1 lbs
350625	1/2" x 15'	White w/ 6" Eye	8156 lbs	1 lbs
350626	1/2" x 20'	White w/ 6" Eye	8156 lbs	2 lbs
350628	1/2" x 25'	White w/ 6" Eye	8156 lbs	2 lbs
350630	1/2" x 30'	White w/ 6" Eye	8156 lbs	2 lbs
350643	5/8" x 25'	White w/ 6" Eye	13200 lbs	3 lbs
350645	5/8" x 30'	White w/ 6" Eye	13200 lbs	4 lbs
350651	5/8" x 35'	White w/ 6" Eye	13200 lbs	4 lbs

Double Braid-Black

Item #	Dimensions	Color	Tensile	Weight
350199	3/8" x 15'	Black w/ 6" Eye	4625 lbs	1 lbs
350207	1/2" x 15'	Black w/ 6" Eye	8156 lbs	1 lbs
350209	1/2" x 20'	Black w/ 6" Eye	8156 lbs	2 lbs
350629	1/2" x 25'	Black w/ 6" Eye	8156 lbs	2 lbs
350641	5/8" x 20'	Black w/ 6" Eye	13200 lbs	3 lbs
350644	5/8" x 25'	Black w/ 6" Eye	13200 lbs	3 lbs
350646	5/8" x 30'	Black w/ 6" Eye	13200 lbs	4 lbs



Nylon Anchor Line

CWC nylon anchor lines can absorb sudden shock and exhibit excellent resistance to abrasion, rot, mildew, marine growth, oil and most common chemicals.

Features:

- Stainless steel thimble on one end

Item #	Dimensions	Description	Tensile	Weight
350700	3/8" x 250'	White - 3 Strand	3240 lbs	12 lbs
350701	3/8" x 600'	White - 3 Strand	3240 lbs	24 lbs
350705	7/16" x 300'	White - 3 Strand	4320 lbs	17 lbs
350706	7/16" x 600'	White - 3 Strand	4320 lbs	32 lbs
350710	1/2" x 150'	White - 3 Strand	5670 lbs	12 lbs
350711	1/2" x 250'	White - 3 Strand	5670 lbs	17 lbs
350715	1/2" x 300'	White - Double Braid	6525 lbs	23 lbs
350713	1/2" x 600'	White - 3 Strand	5670 lbs	41 lbs
350720	5/8" x 150'	White - 3 Strand	8910 lbs	17 lbs
350721	5/8" x 300'	White - 3 Strand	8910 lbs	33 lbs
350722	5/8" x 600'	White - 3 Strand	8910 lbs	63 lbs

3 Strand Twisted

Item #	Dimensions	Color	Tensile	Weight
317011	3/8" x 15'	White w/ 6" Eye	3240 lbs	1 lbs
317016	3/8" x 20'	White w/ 6" Eye	3240 lbs	1 lbs
317021	3/8" x 25'	White w/ 6" Eye	3240 lbs	1 lbs
317041	1/2" x 15'	White w/ 6" Eye	5670 lbs	1 lbs
317046	1/2" x 20'	White w/ 6" Eye	5670 lbs	2 lbs
317051	1/2" x 25'	White w/ 6" Eye	5670 lbs	2 lbs
317056	1/2" x 30'	White w/ 6" Eye	5670 lbs	3 lbs
317066	5/8" x 30'	White w/ 6" Eye	8910 lbs	4 lbs
317071	5/8" x 35'	White w/ 6" Eye	8910 lbs	4 lbs



Conduit Pull Line

Strong spiral twisted polypropylene, CWC conduit pull line is designed to be blown, pulled or vacuumed through utility conduits.

Features:

- Ideal for tying lightweight cables
- Color-coded tracer for easy identification



Polyester Pulling Rope w/Eyes at Each End

High strength, low stretch polyester double braid rope with factory spliced eyes at each end for pulling T & D stringing lines, winch lines, hand lines and heavy wire. Protective urethane coating available.

Features:

- Non-torquing construction
- Suited for prolonged outdoor exposure
- Good dielectric properties

Bucket Dispensers

Item #	Description	Length	Tensile	Units	Weight
027014	Blue-White 10# Tube	6500'	210 lbs	1	12 lbs
027440	Red-White 10# Tube	2200'	500 lbs	1	12 lbs

Refill Tubes

Item #	Description	Length	Tensile	Units	Weight
027016	Blue-White 10# Tube	6500'	210 lbs	1	10 lbs
027430	Red-White 10# Tube	2200'	500 lbs	1	10 lbs
027013	Carton of Blue-White 10# Tubes	6500'	210 lbs	4	40 lbs



PolyPRO Conduit Rope

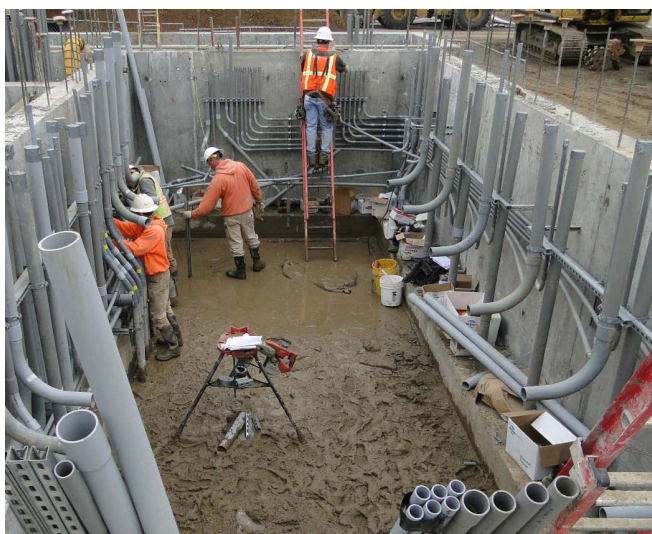
CWC conduit rope is designed to be pulled or vacuumed through utility conduits. This monofilament polypropylene rope holds a knot well and ties easily. It exhibits great resistance to oil, rot, abrasion, UV light and many common chemicals. Standard color is yellow. Other colors available on request.

Features:

- High strength and minimal stretch
- Good abrasion resistance
- Good dielectric properties

Item #	Dimensions	Color	Tensile	Weight
304003	1/8" x 1000'	Yellow	300 lbs	3 lbs
304005	1/8" x 3000'	Yellow	300 lbs	9 lbs
304025	3/16" x 3000'	Yellow	650 lbs	20 lbs
304027	3/16" x 3600'	Yellow	650 lbs	24 lbs
304042	1/4" x 2000'	Yellow	1125 lbs	14 lbs
304045	1/4" x 2400'	Yellow	1125 lbs	26 lbs
304050	1/4" x 4000'	Yellow	1125 lbs	44 lbs
304054	1/4" x 5000'	Yellow	1125 lbs	55 lbs
304060	1/4" x 25000'	Yellow	1125 lbs	280 lbs
304100	3/8" x 2500'	Yellow	2430 lbs	59 lbs
304105	3/8" x 3600'	Yellow	2430 lbs	90 lbs

Item #	Dimensions	Description	Tensile	Weight
347043	3/8" x 600'	White w/Spliced EEE	4800 lbs	29 lbs
347058	1/2" x 300'	White w/Spliced EEE	8400 lbs	14 lbs
347473	1/2" x 600'	White w/Spliced EEE	8400 lbs	26 lbs
347066	1/2" x 1200'	White w/Spliced EEE	8400 lbs	52 lbs
347059	9/16" x 300'	White w/Spliced EEE	10750 lbs	34 lbs
347057	9/16" x 600'	White w/Spliced EEE	10750 lbs	68 lbs
347474	5/8" x 300'	White w/Spliced EEE	12300 lbs	39 lbs
347475	5/8" x 600'	White w/Spliced EEE	12300 lbs	80 lbs
347477	5/8" x 1200'	White w/Spliced EEE	12300 lbs	156 lbs
348113	3/4" x 300'	White w/Spliced EEE	17400 lbs	225 lbs
348115	3/4" x 600'	White w/Spliced EEE	17400 lbs	56 lbs
348116	3/4" x 1200'	White w/Spliced EEE	17400 lbs	94 lbs
348124	7/8" x 600'	White w/Spliced EEE	24000 lbs	154 lbs
348114	7/8" x 1200'	White w/Spliced EEE	24000 lbs	307 lbs
348127	1" x 300'	White w/Spliced EEE	31200 lbs	184 lbs





Polyester Pull Tape

Designed for the telecommunications and power utility industries, CWC conduit tape provides accurate measurements and is ideal for pulling of lightweight cable.

Features:

- Sequential distance markings
- Flat construction and specialized lubricants minimize friction and duct cutting.

Item #	Dimensions	Description	Tensile	Weight
179004*	3/16" x 3000'	White - Stranded	160 lbs	40 lbs
179105	1/4" x 3000'	White - Stranded	400 lbs	12 lbs
179173	1/2" x 500'	White - Woven	1250 lbs	5 lbs
179118	1/2" x 1500'	White - Woven	1250 lbs	13 lbs
179120	1/2" x 3000'	White - Woven	1250 lbs	23 lbs
179125	1/2" x 5000'	White - Woven	1250 lbs	40 lbs
179135	5/8" x 3000'	White - Woven	1800 lbs	34 lbs
179140	5/8" x 5000'	White - Woven	1800 lbs	55 lbs
179008	3/4" x 1000'	White - Woven	2500 lbs	16 lbs
179174	3/4" x 1500'	White - Woven	2500 lbs	26 lbs
179010	3/4" x 3000'	White - Woven	2500 lbs	49 lbs
179177	3/4" x 5000'	White - Woven	2500 lbs	80 lbs

* 8 reels per carton



KEVLAR® Pulling Tape

KEVLAR® pulling tape offers superior strength and low elongation. Made of high-tenacity aramid yarns, which limit the oxygen index, making KEVLAR® ideal for use in duct applications where flame resistant pull tape is required.

Item #	Dimensions	Description	Tensile	Weight
179200	3/8" x 3000'	Yellow w/Blk Markers	1250 lbs	13 lbs
179201	1/2" x 5000'	Yellow w/Blk Markers	2500 lbs	20 lbs



Adjustable Sling

This sling features a permanent eye at one end, an adjustable eye at the other. Accommodates a wide range of lifting tasks.

Features:

- Braided, non-torquing polyester with Samthane urethane coating

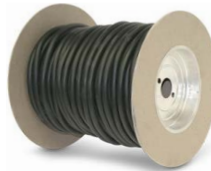
Item #	Description	Weight
059313	3/4" Red Whoopee Adjustable Sling	6 lbs



Shock Cord

Filament rubber with an abrasion-resistant fiber jacket, shock cord offers durability, elasticity and flexibility. Used commonly for securing tarps over loads in transit, as well as for holding lines in boating and camping.

White	Black	Size	Dimensions	Tensile	Weight
162001	162002	#4	1/8" x 250'	65 lbs	2 lbs
162005	162006	#6	3/16" x 250'	190 lbs	3 lbs
162015	162016	#8	1/4" x 250'	215 lbs	5 lbs
162025	162026	#10	5/16" x 250'	245 lbs	8 lbs
162035	162073	#12	3/8" x 250'	265 lbs	11 lbs
162040	162039	#16	1/2" x 150'	350 lbs	13 lbs
162050	162075	#16	1/2" x 250'	350 lbs	21 lbs
162079		#20	5/8" x 100'	425 lbs	13 lbs
	162082	#20	5/8" x 250'	425 lbs	32 lbs
	162077	#24	3/4" x 250'	485 lbs	53 lbs



Rubber Rope

CWC solid and hollow core rubber rope, versatile for jobs needing a custom length tie down tarp strap.

Item #	Dimensions	Description	Weight
163110	3/8" x 150'	Hollow Core - Black	8 lbs
163108	3/8" x 150'	Solid Core - Black	14 lbs
163115	7/16" x 150'	Hollow Core - Black	11 lbs
163113	7/16" x 150'	Solid Core - Black	16 lbs



Hooks

CWC Black plastic-coated shock cord hooks affix easily, providing a secure tie-down. "J" and "S" style hooks keep rubber rope securely in place.

Item #	Description	Units	Weight
162200	3/16" Shock Cord Hooks	50/Bag	1.55 lbs
162205	1/4" Shock Cord Hooks	50/Bag	2.15 lbs
162210	5/16" Shock Cord Hooks	50/Bag	2.05 lbs
162215	3/8" Shock Cord Hooks	50/Bag	2.30 lbs
162220	1/2" Shock Cord Hooks	50/Bag	2.15 lbs
163105	"J" Style Rubber Rope Hooks	100/Bag	5 lbs
163107	"S" Style Rubber Rope Hooks	100/Bag	5 lbs

Halter-Lead Rope



MFP Halter-Lead Rope

Also known as derby rope, multifilament polypropylene halter-lead rope is very soft and supple, making it ideal for harnessing animals. Good resistance to abrasion, rot, mildew, UV light, and most common chemicals. Useful in any application where high visibility cordage is needed.

Features:

- Handles exceptionally well
- Will not kink
- Economical general-purpose rope

3/8 in

Item #	Dimensions	Color	Tensile	Weight
115313	3/8" x 500'	Black	880 lbs	11 lbs
115330	3/8" x 500'	Black/White	880 lbs	11 lbs
115300	3/8" x 500'	Blue	880 lbs	11 lbs
115320	3/8" x 500'	Blue/White	880 lbs	11 lbs
115310	3/8" x 500'	Green	880 lbs	11 lbs
115335	3/8" x 500'	Green/Red	880 lbs	11 lbs
115315	3/8" x 500'	Green/White	880 lbs	11 lbs
115311	3/8" x 500'	Red	880 lbs	11 lbs
115325	3/8" x 500'	Red/White	880 lbs	11 lbs
115302	3/8" x 500'	White	880 lbs	11 lbs

27/64 in

Item #	Dimensions	Color	Tensile	Weight
115346	27/64" x 300'	Black	1150 lbs	8 lbs
115340	27/64" x 300'	Black/White	1150 lbs	8 lbs
115345	27/64" x 300'	Blue	1150 lbs	8 lbs
115341	27/64" x 300'	Blue/White	1150 lbs	8 lbs
115347	27/64" x 300'	Green	1150 lbs	8 lbs
115342	27/64" x 300'	Green/White	1150 lbs	8 lbs
115344	27/64" x 300'	Red	1150 lbs	8 lbs
115343	27/64" x 300'	Red/White	1150 lbs	8 lbs
115334	27/64" x 500'	Black	1150 lbs	13 lbs
115700	27/64" x 500'	Green	1150 lbs	13 lbs
115701	27/64" x 500'	Red	1150 lbs	13 lbs
115702	27/64" x 500'	Blue	1150 lbs	13 lbs
115331	27/64" x 500'	Black/White	1150 lbs	13 lbs
115321	27/64" x 500'	Blue/White	1150 lbs	13 lbs
115316	27/64" x 500'	Green/White	1150 lbs	13 lbs
115326	27/64" x 500'	Red/White	1150 lbs	13 lbs

5/8 in

Item #	Dimensions	Color	Tensile	Weight
115430	5/8" x 200'	Black	2300 lbs	7 lbs
115465	5/8" x 200'	Black/White	2300 lbs	7 lbs
115410	5/8" x 200'	Blue	2300 lbs	7 lbs
115454	5/8" x 200'	Blue/Silver	2300 lbs	7 lbs
115450	5/8" x 200'	Blue/White	2300 lbs	7 lbs
115435	5/8" x 200'	Brown	2300 lbs	7 lbs
115470	5/8" x 200'	Brown/White	2300 lbs	7 lbs
115480	5/8" x 200'	Burgundy/White	2300 lbs	7 lbs
115445	5/8" x 200'	Gold	2300 lbs	7 lbs
115475	5/8" x 200'	Gold/White	2300 lbs	7 lbs
115415	5/8" x 200'	Green	2300 lbs	7 lbs
115455	5/8" x 200'	Green/White	2300 lbs	7 lbs
115416	5/8" x 200'	Hunter Green	2300 lbs	7 lbs
115411	5/8" x 200'	Navy	2300 lbs	7 lbs
115453	5/8" x 200'	Navy/White	2300 lbs	7 lbs
115427	5/8" x 200'	Purple	2300 lbs	7 lbs
115420	5/8" x 200'	Red	2300 lbs	7 lbs
115460	5/8" x 200'	Red/White	2300 lbs	7 lbs
115522	5/8" x 200'	Red/White/Blue	2300 lbs	7 lbs
115486	5/8" x 200'	Royal Blue/Purple	2300 lbs	7 lbs
115440	5/8" x 200'	Silver	2300 lbs	7 lbs
115414	5/8" x 200'	Teal	2300 lbs	7 lbs
115413	5/8" x 200'	Turquoise	2300 lbs	7 lbs
115421	5/8" x 200'	Yellow	2300 lbs	7 lbs



Rope Clamps

CWC nickel and bronze-plated rope clamps hold ropes in place to maximize load strength and efficiency. Perfect for making your own lead lines, lunge lines, cross ties and more.

Item #	Description	Weight
068300	5/8" Rope Clamps - Nickel (50/Box)	6 lbs
068310	5/8" Rope Clamps - Bronze (50/Box)	6 lbs



Safety/Arborist Rope

Arborists prefer our static kernmantle ropes because of the superior wear, knot control and high-tenacity construction. Our MAX VISIBILITY rope is a virtual beacon for climbers with its neon orange and yellow color combo.

Item #	Dimensions	Description	Tensile	Weight
349175	1/2" x 600'	12 Strand - White w/ Blue & Gold Tracers	5400 lbs	45 lbs
349255	1/2" x 600'	16 Strand - Red w/Gold Tracers	5500 lbs	45 lbs
349275	1/2" x 600'	16 Strand - White w/ Orange Fleck	5500 lbs	45 lbs
349295	1/2" x 600'	16 Strand - Neon Orange & Yellow	5500 lbs	45 lbs



HTP Safety Static Rope

HTP is a high tenacity polyester rope with low stretch and high moisture resistance. Benefits include superior durability, better UV resistance than nylon and aramids, and the right amount of stiffness for improved SRT work. Meets ANSI Z133.1 certification.

Item #	Dimensions	Color	Tensile	Weight
349305	7/16" x 600'	White	6519 lbs	33 lbs
349306	7/16" x 600'	Black	6519 lbs	33 lbs
349307	7/16" x 600'	Blue	6519 lbs	33 lbs
349308	7/16" x 600'	Red	6519 lbs	33 lbs
349310	1/2" x 600'	White	9284 lbs	41 lbs



Rope Cutters

CWC offers pistol grip and box rope cutters. These tools simultaneously cut and seal the ends of polypropylene, polyester and nylon rope and webbing.

Item #	Description	Weight
068005	Pistol Grip Rope Cutter - Cuts up to 1-1/2" dia ropes	2 lbs
068007	Table Top Rope Cutter - Cuts up to 2-3/8" dia rope	3 lbs
068010	Replacement Blades for Cutting Gun	0.2 lbs
068011	Replacement Blades for Table Top Cutter	0.2 lbs



Digital Cordage Meter

This digital cordage meter accurately measures both synthetic and natural fiber rope and cord from 5/32" to 3/4" in diameter. Rope smoothly cranks through with the help of a feed wheel.

Item #	Description	Weight
068410	Digital Cordage Meter	5 lbs





3 Strand Polypro Mini Coils

This lightweight, durable, economical polypropylene rope exhibits high strength, low stretch and excellent resistance to oil, rot and most common chemicals. Good resistance to UV light and abrasion. Floats. Comes retail packaged and shrink wrapped.

Item #	Dimensions	Color	Units	Tensile	Weight
150005	1/4" x 50'	Yellow	12	1125 lbs	7 lbs
150010	1/4" x 100'	Yellow	12	1125 lbs	15 lbs
150015	3/8" x 50'	Yellow	12	2430 lbs	16 lbs
150020	3/8" x 100'	Yellow	12	2430 lbs	32 lbs
150025	1/2" x 50'	Yellow	12	3780 lbs	28 lbs
150030	1/2" x 100'	Yellow	12	3780 lbs	56 lbs



3 Strand Polypro Cal Truck Rope Mini Coils

CWC CA truck rope offers long-lasting color, high strength and low stretch. Features the same benefits of standard polypro. Conforms to California Highway Patrol standards. Comes retail packaged and shrink wrapped.

Item #	Dimensions	Color	Units	Tensile	Weight
152015	3/8" x 50'	Blk w/Org Tracer	12	2430 lbs	16 lbs
152020	3/8" x 100'	Blk w/Org Tracer	12	2430 lbs	32 lbs
152025	1/2" x 50'	Blk w/Org Tracer	12	3780 lbs	28 lbs
152030	1/2" x 100'	Blk w/Org Tracer	12	3780 lbs	56 lbs



3 Strand Nylon Mini Coils

All-purpose 3 strand nylon rope offers high strength, great shock absorption and excellent resistance to UV light, mildew, rot, oil, grease and many common chemicals. Easy to knot, grip and splice. Comes retail packaged and shrink wrapped.

Item #	Dimensions	Color	Units	Tensile	Weight
151005	1/4" x 50'	White	12	1485 lbs	10 lbs
151010	1/4" x 100'	White	12	1485 lbs	20 lbs
151015	3/8" x 50'	White	12	3240 lbs	22 lbs
151020	3/8" x 100'	White	12	3240 lbs	44 lbs
151025	1/2" x 50'	White	12	5670 lbs	38 lbs
151030	1/2" x 100'	White	6	5670 lbs	38 lbs



3 Strand Manila Mini Coils

Natural abaca fiber PACIFIC™ manila rope is one of the strongest natural ropes available on the market today. It offers low stretch and good abrasion resistance. No oil treatment. Comes retail packaged and shrink wrapped.

Item #	Dimensions	Color	Units	Tensile	Weight
156005	1/4" x 50'	Natural	24	540 lbs	18 lbs
156010	1/4" x 100'	Natural	12	540 lbs	18 lbs
156015	3/8" x 50'	Natural	12	1215 lbs	19 lbs
156023	3/8" x 100'	Natural	12	1215 lbs	38 lbs
156025	1/2" x 50'	Natural	6	2385 lbs	18 lbs
156035	1/2" x 100'	Natural	6	2385 lbs	36 lbs



3 Strand Sisal Mini Coils

Made from natural agave fiber, CWC sisal rope is both economic and biodegradable. Offering moderate stretch, this rope is often used as a general-purpose rope in agriculture and shipping. Comes retail packaged and shrink wrapped.

Item #	Dimensions	Color	Units	Tensile	Weight
157010	1/4" x 50'	Natural	48	385 lbs	42 lbs
157020	1/4" x 100'	Natural	48	385 lbs	84 lbs
157030	3/8" x 50'	Natural	48	865 lbs	89 lbs
157035	3/8" x 100'	Natural	24	865 lbs	89 lbs
157040	1/2" x 50'	Natural	24	1700 lbs	84 lbs
157045	1/2" x 100'	Natural	12	1700 lbs	84 lbs





Cotton Cord Balls

Naturally soft and easy to work with, poly-cotton cable cord offers a supple feel, is good for braiding and holds knots well. Comes retail packaged and shrink wrapped.

Item #	Dimensions	Color	Put up	Units	Weight
137030	#18 x 100'	Natural	2 oz spool	12	1.5 lbs
137025	#18 x 400'	Natural	1# Ball	12	12 lbs
137002	#24 x 390'	Natural	1/2# Ball	12	6 lbs
137003	#24 x 390'	Natural	1/2# Tube	12	6 lbs
137009	#36 x 255'	Natural	1/2# Ball	12	6 lbs



Cotton Twine Balls

Strong, durable, and easy on the hands, cotton twine is used for bundling, wrapping and duty tying. Available polished or unpolished. Retail packaged and shrink wrapped.

Item #	Description	Ft/Lb	Put up	Units	Wt
003015	4 Ply - 6 Yarn - Unpolished	3660'	1/6# Ball	30	5 lbs
003030	5 Ply - 6 Yarn - Unpolished	2940'	1/6# Ball	300	54 lbs
003040	6 Ply - 6 Yarn - Unpolished	2400'	1/6# Ball	300	54 lbs
010080	12 Ply - #48 - Polished	790'	1/2# Ball	12	6 lbs
010090	16 Ply - #60 - Polished	610'	1/2# Ball	12	6 lbs



Sisal Twine Balls

This natural fiber twine offers moderate stretch, good knotting and biodegradability. Available natural or copper-treated. Easy to handle. Retail packaged and shrink wrapped.

Item #	Lth	Color	Ply	Tensile	Put up	Units	Wt
045115	450'	Natural	1	200 lbs	1/2# Ball	12	6 lbs
045120	450'	Green	1	200 lbs	1/2# Ball	12	6 lbs



Jute Twine Tube

Known for its soft feel, natural fiber jute is a multipurpose twine used to wrap parcels, brace viney plants, or for craft projects. Good substitute for hemp. Easy to handle. Retail packaged and shrink wrapped.

Item #	Ply	Color	Tensile	Ft/Lb	Put up	Units	Wt
045145	2	Natural	56 lbs	342'	1/2# Tube	12	6 lbs
045150	3	Natural	84 lbs	228'	1/2# Tube	12	6 lbs
045155	3	Green	84 lbs	228'	1/2# Tube	12	6 lbs



Plastic Splicing Fids

This 3 pack contains plastic splicing fids to be used with hollow braid and twisted ropes. Complete splicing instructions included on back of packaging.

Item #	Description	Color	Weight
068149	1/4", 3/8", 1/2" (3 Fid Pack)	Black	1 lbs



Metal Splicing Fids

CWC offers Samson tubular metal fids designed for splicing double braid ropes. Instructions available. Pushers sold separately.

Item #	Description	Color	Weight
068180	1/4" Metal Fid (Single Fid Pack)	Silver	0.3 lbs
068185	3/8" Metal Fid (Single Fid Pack)	Silver	0.3 lbs
068200	1/2" Metal Fid (Single Fid Pack)	Silver	0.4 lbs
068205	5/8" Metal Fid (Single Fid Pack)	Silver	0.4 lbs
068210	3/4" Metal Fid (Single Fid Pack)	Silver	0.5 lbs



Fid Pushers

Samson fid pushers are used in conjunction with metal splicing fids for splicing double braid ropes. Instructions available. Fids sold separately.

Item #	Description	Weight
068230	Samson Splicing Pushers - Small	0.02 lbs
068235	Splicing Pushers - Large	0.02 lbs



Splicing Manual

This flip chart splicing manual with step-by-step instructions and color photos shows how to put splices in braid-on-braid, hollow braid, or 3 strand twisted ropes. The book is also available as part of a splicing training kit that contains: the book, two lengths of braid-on-braid rope and tools .

Item #	Description	Weight
068251	THE SPLICING BOOK by Dave Richards.	0.25 lbs



Synthetic Tying Twine

CWC polypropylene split and spiral wrap twines are ideal for a wide variety of applications. Lighter than sisal and is easier to handle. Resists breakdown from moisture. Black twine has extra UV inhibitors for extended exposure to sunlight.

Spiral Wrap

Made from parallel, untwisted monofilament polypropylene fibers bound together in a spiral jacket. Resists fraying and unraveling after cutting.

Item #	Color	Knot	Tensile	Ft/Lb	Put up	Units	Wt
027002	White	240 lbs	350 lbs	350'	9.5# Tube	4	40 lbs
027003	White	190 lbs	310 lbs	450'	9.5# Tube	4	40 lbs
027007	White	155 lbs	250 lbs	550'	9.5# Tube	4	40 lbs
027008	Black	155 lbs	250 lbs	550'	9.5# Tube	4	40 lbs
027012	White	125 lbs	200 lbs	650'	9.5# Tube	4	40 lbs
027022	White	100 lbs	160 lbs	850'	9.5# Tube	4	40 lbs
027032	White	80 lbs	135 lbs	1050'	9.5# Tube	4	40 lbs
027035	Black	80 lbs	135 lbs	1050'	9.5# Tube	4	40 lbs
027037	White	70 lbs	110 lbs	1250'	9.5# Tube	4	40 lbs
027038	Black	70 lbs	110 lbs	1250'	9.5# Tube	4	40 lbs

Split Film - 1 Ply

Manufactured as a flat sheet and then cut and twisted, CWC 1-ply split film twine is suited to both machine and hand operations, offering a soft hand feel and strong knots.

Item #	Color	Knot	Tensile	Ft/Lb	Put up	Units	Wt
025042	White	70 lbs	90 lbs	1250'	9.5# Tube	4	40 lbs
025035	Black	80 lbs	110 lbs	1050'	9.5# Tube	4	40 lbs
025032	White	80 lbs	110 lbs	1050'	9.5# Tube	4	40 lbs
025022	White	100 lbs	135 lbs	850'	9.5# Tube	4	40 lbs
025012	White	125 lbs	180 lbs	650'	9.5# Tube	4	40 lbs
025008	Black	155 lbs	210 lbs	550'	9.5# Tube	4	40 lbs
025007	White	155 lbs	210 lbs	550'	9.5# Tube	4	40 lbs
025003	White	190 lbs	260 lbs	450'	9.5# Tube	4	40 lbs
025001	White	240 lbs	325 lbs	350'	9.5# Tube	4	40 lbs

Split Film - 2 & 3 Ply

Item #	Ply	Color	Ft/Lb	Knot	Tensile	Units	Wt
022630	2	White	850'	100 lbs	135 lbs	4	40 lbs
025305	2	White	550'	155 lbs	210 lbs	1	10 lbs
025055	3	White	283'	100 lbs	135 lbs	1	10 lbs
025351	3	White	183'	155 lbs	210 lbs	1	10 lbs

Split Film - 50 lb Tubes - Many Ends

Item #	Ply	Color	Ft/Lb	Knot	Tensile	Units	Wt
028080	1	Tan	1250'	70 lbs	90 lbs	1	50 lbs
028081	1	Black	1250'	70 lbs	90 lbs	1	50 lbs
025060	1	White	450'	190 lbs	260 lbs	1	50 lbs



Poly Film Tape Twine

CWC flat polyethylene film tape twine (also known as ribbon twine) offers the best yield per pound of any twine available. Can replace cotton or polyester wrapping twines.

Features:

- Ideal for tying laundry bags
- Tie newspapers and magazines for mailing

Item #	Size	Length	Color	Put-up	Tensile	Units	Wt
046001	D-17	8430'	Clear	2# Tube	18.5 lbs	20	42 lbs
046100	D-17	8430'	Red	2# Tube	18.5 lbs	20	42 lbs
046105	D-17	8430'	Blue	2# Tube	18.5 lbs	20	42 lbs
046110	D-17	8430'	Yellow	2# Tube	18.5 lbs	20	42 lbs
046115	D-17	8430'	Green	2# Tube	18.5 lbs	20	42 lbs
046004	D-24	12300'	Clear	4# Tube	26.5 lbs	10	42 lbs
046006	D-28	10660'	Green	4# Tube	35.3 lbs	10	42 lbs
046007	D-28	10660'	Red	4# Tube	35.3 lbs	10	42 lbs
046008	D-28	10660'	Blue	4# Tube	35.3 lbs	10	42 lbs
046010	D-28	10660'	Clear	4# Tube	35.3 lbs	10	42 lbs





ProLOK Tomato Twine

Polypropylene twine used for trellising tomatoes, peppers and other vine plants. Lightweight and strong, this twine has extra UV inhibitors to prevent degradation from sunlight.

Features:

- Light to medium duty, versatile
- Forms tight, strong knots
- Resistant to abrasion and friction

Item #	Color	Tensile	Ft/Lb	Put-up	Units	Wt
031100	Black	65 lbs	1890'	3# Tube	1	3 lbs
031105	Pink	65 lbs	1890'	3# Tube	1	3 lbs
031050	Pink	65 lbs	1890'	3# Tube	12	36 lbs



Christmas Tree Twine

CWC polypropylene Christmas tree tying twine is manufactured for machines that bind and bundle individual trees for bulk shipping. Eight tubes per container.

Applications:

- Light to medium duty, versatile
- Forms tight, strong knots

Item #	Color	Length	Tensile	Ft/Lb	Units	Wt
033005	White	6750'	75 lbs	1500'	8	36 lbs



Lumber Braid

Lumber braid is an affordable blended fiber yarn ideal for bundling soft lumber and molding. The flat braided composition is also good for tying soft woods or delicate plants

Features:

- Avoid scarring delicate bark
- Very soft & extremely flexible

Item #	Dimensions	Color	Ft/Lb	Units	Wt
159011	3/8" x 3750'	Multicolor	300'	6	78 lbs



Tree Rope

CWC's tree rope is a twine designed to support the branches of trees. Available in poly-pro or tarred sisal, tree rope is constructed flat to avoid girdling limbs as trees grow.

Features:

- Resists rot, deterioration and UV rays
- Strong and reusable

Item #	Ply	Color	Tensile	Put-up	Units	Wt
030010	1	Black w/Org Tracer	703 lbs	Tube	8	36 lbs
030020	1	Black	703 lbs	Tube	8	36 lbs
044020	4	Tarred Sisal	850 lbs	Ball	10	45 lbs



Meat/Butcher Twine

Our CWC meat/butcher twine is a general use rayon twine for trussing poultry and roasts.

Features:

- Convenient center pull cone
- Great for poultry, meat, roasts and more

Item #	Description	Put-up	Units	Wt
011315	#9 Rayon Meat Twine	2# Cone	25	52 lbs

Poly-Cotton / Sewing Twine



Poly-Cotton Twine

CWC's all purpose polyester-cotton blended twine is soft, versatile and economical. Consistent construction resists binding and works for a wide range of applications. White.

Features:

- Light to medium duty, versatile
- Forms tight, strong knots

3-8 Ply

Item #	Ply	Yarn	Tensile	Ft/Lb	Put-up	Units	Wt
006006	3	4	16 lbs	3360'	2# Cone	25	52 lbs
006080	3	4	16 lbs	3360'	2# Cone	48	98 lbs
004060	3	8	8 lbs	6720'	2 1/2# Cone	20	52 lbs
006011	4	4	20 lbs	2520'	2# Cone	25	52 lbs
004062	4	8	10 lbs	5040'	2 1/2# Cone	20	52 lbs
006016	6	4	30 lbs	1680'	2# Cone	25	52 lbs
004064	6	8	15 lbs	3360'	2 1/2# Cone	20	52 lbs
004204	6	8	15 lbs	3360'	5# Cone	12	62 lbs
006021	8	4	40 lbs	1260'	2# Cone	25	52 lbs
006085	8	4	40 lbs	1260'	2# Cone	48	98 lbs
004066	8	8	20 lbs	2520'	2 1/2# Cone	20	52 lbs
004207	8	8	20 lbs	2520'	5# Cone	12	62 lbs

10-16 Ply

Item #	Ply	Yarn	Tensile	Ft/Lb	Put-up	Units	Wt
006026	10	4	50 lbs	1008'	2# Cone	25	52 lbs
004068	10	8	25 lbs	2016'	2 1/2# Cone	20	52 lbs
004212	10	8	25 lbs	2016'	5# Cone	12	62 lbs
006031	12	4	60 lbs	840'	2# Cone	25	52 lbs
004070	12	8	30 lbs	1680'	2 1/2# Cone	20	52 lbs
004217	12	8	30 lbs	1680'	5# Cone	12	62 lbs
006036	16	4	80 lbs	630'	2# Cone	25	52 lbs
004072	16	8	40 lbs	1260'	2 1/2# Cone	20	52 lbs
004222	16	8	40 lbs	1260'	5# Cone	12	62 lbs
006100	16	8	40 lbs	1260'	5# Cone	18	92 lbs

20-36 Ply

Item #	Ply	Yarn	Tensile	Ft/Lb	Put-up	Units	Wt
004074	20	8	50 lbs	1008'	2 1/2# Cone	20	52 lbs
004224	20	8	50 lbs	1008'	5# Cone	12	62 lbs
006041	24	4	120 lbs	420'	2# Cone	25	52 lbs
004076	24	8	60 lbs	840'	2 1/2# Cone	20	52 lbs
006043	36	4	180 lbs	280'	2# Cone	25	52 lbs



Sewing/Sacking Twine

CWC polyester, cotton and blended sewing/sacking twines offer strong, durable and cost-effective choices for package bundling, wrapping and heavy-duty tying.

Features:

- Perfect tying cord for every day uses
- Strong and easy on the hands
- Works in both machine & hand applications

100% Polyester

A great choice for sewing fabric, leather, canvas and vinyl. Super strong and durable, this twine has excellent UV resistance, making it ideal for anything that will be exposed to the elements, such as awnings.

Item #	Ply	Description	Put-up	Units	Wt
015085	4	13 Yarn - Standard White	1 1/2# Cone	32	18 lbs
015086	4	13 Yarn - Premium White	1 1/2# Cone	32	18 lbs
015090	4	13 Yarn - Standard White	2 1/2# Cone	18	47 lbs
015101	4	13 Yarn - Standard White	20# Cone	4	82 lbs
015082	5	12 Yarn - Standard White	5# Cone	8	42 lbs
015102	5	12 Yarn - Standard White	20# Cone	4	82 lbs
020035	20	Standard White	2 1/2# Cone	20	52 lbs

100% Cotton

This versatile, cotton sewing-sacking twine is soft and easy on the hands. Biodegradable. Comes in 50 lbs many-end reels.

Item #	Description	Color	Tensile	Ft/Lb	Units	Wt
016005	#18 Polished	White	29 lbs	1575'	1	54 lbs
016015	#24 Polished	White	40 lbs	1190'	1	54 lbs
017025	#24 Unpolished	White	40 lbs	1190'	1	54 lbs

Poly-Cotton Blend

An all-purpose soft, economical sewing twine. This twine's consistent construction resists binding and works well for a wide range of sewing, sacking and binding applications.

Item #	Ply	Description	Color	Put-up	Units	Wt
015015	4	12 Yarn	White	1 1/2# Cone	32	17 lbs
015061	4	12 Yarn	White	20# Cone	4	82 lbs
015020	5	12 Yarn	White	1 1/2# Cone	32	17 lbs
015044	5	12 Yarn	White	15# Cone	4	62 lbs
015066	5	12 Yarn	White	20# Cone	4	82 lbs
015046	6	12 Yarn	White	15# Cone	4	62 lbs



Mason-Seine Twine

Used commonly in construction and utility, CWC mason/seine twine features a smooth construction that ties easily and knots securely. This hi-viz twine offers excellent resistance to abrasion, UV light, rot, mildew, petroleum products and most common chemicals. Tubes come attractively retail packaged, labeled, shrink wrapped and UPC coded.

Features:

- High strength, high visibility
- Uniform construction
- For construction, utility, masonry and more
- Available by the carton

Twisted

Our twisted and braided mason/seine twines exhibit many of the same features; however the twisted offers less bend and a lower stress point.

Item #	Size	Put-up	Color	Units	Weight
135015	#9 x 525'	4 oz	White	12	3 lbs
135025	#15 x 375'	4 oz	White	12	4 lbs
135055	#15 x 375'	4 oz	Yellow	12	4 lbs
135105	#15 x 570'	8 oz	Yellow	12	7 lbs
135031	#18 x 275'	4 oz	White	12	4 lbs
135061	#18 x 275'	4 oz	Yellow	12	4 lbs
135062	#18 x 275'	4 oz	Black	12	4 lbs
135059	#18 x 275'	4 oz	Neon Yellow	12	4 lbs
135032	#18 x 275'	4 oz	Pink	12	4 lbs
135034	#18 x 275'	4 oz	Orange	12	4 lbs
135058	#18 x 275'	4 oz	Neon Green	12	4 lbs
135071	#18 x 550'	8 oz	White	12	7 lbs
135109	#18 x 550'	8 oz	Yellow	12	7 lbs
135108	#18 x 550'	8 oz	Neon Yellow	12	7 lbs
135072	#18 x 550'	8 oz	Pink	12	7 lbs
135074	#18 x 550'	8 oz	Orange	12	7 lbs
135126	#18 x 1100'	16 oz	White	12	12 lbs
135141	#18 x 1100'	16 oz	Yellow	12	12 lbs
135139	#18 x 1100'	16 oz	Neon Yellow	12	12 lbs
135127	#18 x 1100'	16 oz	Pink	12	12 lbs
135124	#18 x 1100'	16 oz	Orange	12	12 lbs
135050	#36 x 120'	4 oz	White	12	5 lbs
135136	#36 x 480'	16 oz	White	12	12 lbs
135140	#36 x 480'	16 oz	Yellow	12	12 lbs
135137	#48 x 480'	16 oz	White	12	12 lbs

Braided

CWC braided mason/seine twine will not unravel as easy as twisted line when cut, and offers better tying and knotting.

Item #	Size	Put-up	Color	Units	Weight
134004	#18 x 275'	4 oz	White	12	4 lbs
134008	#18 x 275'	4 oz	Yellow	12	4 lbs
134130	#18 x 275'	4 oz	Neon Yellow	12	4 lbs
134135	#18 x 275'	4 oz	Neon Pink	12	4 lbs
134140	#18 x 275'	4 oz	Neon Orange	12	4 lbs
134125	#18 x 275'	4 oz	Neon Green	12	4 lbs
134009	#18 x 550'	8 oz	White	12	7 lbs
134013	#18 x 550'	8 oz	Yellow	12	7 lbs
134126	#18 x 550'	8 oz	Green	12	7 lbs
134132	#18 x 550'	8 oz	Neon Yellow	12	7 lbs
134137	#18 x 550'	8 oz	Neon Pink	12	7 lbs
134142	#18 x 550'	8 oz	Neon Orange	12	7 lbs
134127	#18 x 550'	8 oz	Neon Green	12	7 lbs
134018	#18 x 1100'	16 oz	White	12	13 lbs
134014	#18 x 1100'	16 oz	Yellow	12	13 lbs
134016	#18 x 1100'	16 oz	Green	12	13 lbs
134134	#18 x 1100'	16 oz	Neon Yellow	12	13 lbs
134139	#18 x 1100'	16 oz	Neon Pink	12	13 lbs
134144	#18 x 1100'	16 oz	Neon Orange	12	13 lbs
134129	#18 x 1100'	16 oz	Neon Green	12	13 lbs





Sisal Tying Twine

Natural agave fiber sisal tying twine. Used in many jobs that require the strength and pliability of a natural fiber twine. Contains no oil or fungicide treatment. Used for general-purpose shipping and tying.

Features:

- Light to medium duty, versatile
- Forms tight, strong knots
- Secure plants in shipment

Item #	Ft/Lb	Tensile	Ply	Put up	Units	Weight
042005	360'	160 lbs	1	10# Tube	6	60 lbs
042035	360'	160 lbs	1	20# Tube	2	40 lbs
042065	360'	160 lbs	1	50# S/E Reel	1	50 lbs
042050	360'	160 lbs	1	50# S/E Tube	1	50 lbs
042103	300'	190 lbs	1	5# Ball	10	50 lbs
042121	300'	190 lbs	1	10# Tube	6	60 lbs
042110	300'	190 lbs	1	10# Tube	10	100 lbs
044030	225'	265 lbs	1	50# M/E Coil	1	50 lbs
042101	185'	410 lbs	1	5# Ball	10	50 lbs
042120	405'	270 lbs	2	5# Tube	10	50 lbs
042265	240'	220 lbs	2	100# M/E Coil	1	100 lbs
042010	176'	290 lbs	2	10# Tube	6	60 lbs
042040	176'	290 lbs	2	20# Tube	2	40 lbs
042070	176'	290 lbs	2	50# S/E Reel	1	50 lbs
042055	176'	290 lbs	2	50# S/E Tube	1	50 lbs
042105	144'	350 lbs	2	5# Ball	10	50 lbs
042122	144'	350 lbs	2	10# Tube	6	60 lbs
042112	144'	350 lbs	2	10# Tube	10	100 lbs
042128	144'	350 lbs	2	10# Tube - GR	10	100 lbs
042090	144'	350 lbs	2	50# S/E Tube	1	50 lbs
042015	115'	405 lbs	3	10# Tube	6	60 lbs
042042	115'	405 lbs	3	20# Tube	2	40 lbs
042200	115'	405 lbs	3	50# S/E Reel	1	50 lbs
042060	115'	405 lbs	3	50# S/E Tube	1	50 lbs
042107	92'	485 lbs	3	5# Ball	10	50 lbs
042123	92'	485 lbs	3	10# Tube	6	60 lbs
042130	92'	485 lbs	3	10# Tube	10	100 lbs
042114	92'	485 lbs	3	10# Tube	10	100 lbs
042116	72'	850 lbs	4	10# Tube	10	100 lbs
042117	60'	1095 lbs	5	10# Tube	10	100 lbs
042118	48'	1400 lbs	6	10# Tube	10	100 lbs



Sisal Binder Twine

Natural agave fiber sisal binder twine. Useful for a variety of applications where biodegradable binding material is preferred. Forms strong knots.

Features:

- Light to medium duty, versatile
- Good for recycling, gardening and tying cane

Item #	Ft/Lb	Ply	Put up	Units	Weight
040020	500'	1	4# Tubes - UPC	10	40 lbs
040010	500'	1	4.5# Balls	10	45 lbs
040005	500'	1	5# Tubes	10	50 lbs



Copper Treated Sisal

CWC offers sisal twine treated with copper naphthenate, which extends product life and works as a natural fungicide. Good for jobs that require a longer lasting natural twine.

Features:

- Light to medium duty, versatile
- Forms tight, strong knots

Item #	Ft/Lb	Ply	Put up	Units	Weight
044005	300'	1	5# Balls	10	50 lbs
044003	185'	1	5# Balls	10	50 lbs
044010	150'	2	5# Balls	10	50 lbs
044015	100'	3	5# Balls	10	50 lbs



Jute

Untreated natural fiber jute. Known for its soft feel, jute is a multi-purpose twine used for crafts, to wrap parcels or brace viney plants.

Features:

- Light-duty, versatile, multi-filament fiber
- Economical substitute for hemp

Item #	Yarn	Ply	Tensile	Ft/Lb	Put-up	Units	Wt
048190	14	2	27 lbs	1500'	10# Tube	6	62 lbs
048160	28	3	85 lbs	510'	10# Tube	6	62 lbs
048165	28	4	115 lbs	375'	10# Tube	6	62 lbs
048045	72	4	328 lbs	140'	10# Tube	6	62 lbs
048195	14	2	27 lbs	1500'	50# M/E Reel	1	52 lbs
048174	28	2	57 lbs	750'	50# M/E Reel	1	52 lbs
048180	28	3	85 lbs	510'	50# M/E Reel	1	52 lbs
048181	28	4	115 lbs	375'	50# M/E Reel	1	52 lbs



Sisal Baler Twine

Treated to resist rot, mildew, rodents and insects. Spun from long UV-resistant agave fibers for consistent trouble-free baling and a uniform construction.

Features:

- Uniform consistency for knot-free run.
- High tensile and knot strength
- No smell to attract pests

Golden

Item #	Ft/Lb	Length	Knot	Tubes	Weight
038005	231'	9000'	140 lbs	2	39 lbs
038010	185'	7200'	175 lbs	2	39 lbs
038020	410'	16000'	75 lbs	2	39 lbs

Green

Item #	Ft/Lb	Length	Knot	Tubes	Weight
038013	231'	9000'	140 lbs	2	39 lbs
038012	185'	7200'	175 lbs	2	39 lbs
038021	410'	16000'	75 lbs	2	39 lbs



Synthetic Baler Twine

CWC synthetic baler twine is made from tough polypropylene fiber with additional bulk for improved performance and handling. It features a soft construction that's easy on hands and machinery, ensuring a smooth run through balers. High UV inhibitors. Available in a variety of colors.

Features:

- Resistant to abrasion and UV light
- Soft & flexible tangle-free construction
- Additional colors available by request

Small Bale

Item #	Length	Knot	Color	Tubes	Weight	Pallet
037010	9000'	130 lbs	Orange	2	16 lbs	60
037009	9000'	130 lbs	Black	2	16 lbs	60
037005	7200'	170 lbs	Orange	2	17 lbs	60
037006	7200'	170 lbs	Blue	2	17 lbs	60
037046	7200'	170 lbs	Yellow	2	17 lbs	60
037015	9600'	170 lbs	Orange	2	22 lbs	48
037016	9600'	170 lbs	Blue	2	22 lbs	48
037017	9600'	170 lbs	Yellow	2	22 lbs	48

Round Bale

Item #	Length	Tensile	Color	Tubes	Weight	Pallet
037050	20,000'	110 lbs	Orange	2	15 lbs	60
037051	20,000'	130 lbs	Orange	2	17 lbs	60

Big Bale

Item #	Length	Knot	Color	Tubes	Weight	Pallet
037030	5000'	210 lbs	Orange	1	14 lbs	48
037095	6500'	210 lbs	Orange	1	18 lbs	48
037035	6500'	240 lbs	Orange	1	20 lbs	48
037145	8500'	245 lbs	Black	1	23 lbs	48
037148	8500'	245 lbs	Blue	1	23 lbs	48
037144	8500'	245 lbs	Orange	1	23 lbs	48
037142	8500'	245 lbs	White	1	23 lbs	48
037143	8500'	245 lbs	Yellow	1	23 lbs	48
037037	6500'	250 lbs	Orange	1	19 lbs	48
037072	7000'	280 lbs	Black HD	1	26 lbs	48
037075	7000'	280 lbs	Blue HD	1	26 lbs	48
037074	7000'	280 lbs	Green HD	1	26 lbs	48
037004	7000'	280 lbs	Orange	1	24 lbs	48
037007	7000'	280 lbs	Org HD	1	26 lbs	48
037000	7000'	280 lbs	Silver HD	1	26 lbs	48
037073	7000'	280 lbs	Yellow HD	1	26 lbs	48
037019	4000'	350 lbs	Blue	1	18 lbs	48
037025	4000'	350 lbs	Green	1	18 lbs	48
037020	4000'	350 lbs	Orange	1	18 lbs	48
037021	4000'	350 lbs	Yellow	1	18 lbs	48
037091	4850'	350 lbs	Orange	1	23 lbs	48
037027	4000'	440 lbs	Orange	1	21 lbs	48
037128	4000'	440 lbs	White	1	21 lbs	48
037123	4000'	440 lbs	Yellow	1	21 lbs	48
037029	4000'	500 lbs	Orange	1	23 lbs	48
037121	3900'	550 lbs	Orange	1	23 lbs	48
037018	3800'	650 lbs	Blue	1	22 lbs	48
037002	3800'	650 lbs	Orange	1	22 lbs	48

Big bale twine comes boxed or unboxed, depending on region. Additional colors available on request. Call for details.



Baler Net Wrap

CWC's baler net wrap holds bale shape, allows for shedding water and can be used in conjunction with stretch wrap for securing hay or silage.

Features:

- Holds securely
- UV resistant for outdoor storage

Item #	Description	Width	Length	Weight
052420	Polypropylene Net Wrap	48"	9840'	73 lbs
052425	Polypropylene Net Wrap	51"	9840'	77 lbs
052440	Polypropylene Net Wrap	64"	7000'	69 lbs
052450	Polypropylene Net Wrap	67"	7000'	72 lbs



Silage Wrap

CWC's silage wrap is a reflective polyethylene film that acts as a UV and air resistant barrier for silage products, extending nutrient life.

Features:

- Fights UV breakdown
- Good puncture and tear resistance

Item #	Description	Width	Gauge	Length	Weight
052550	1 Mil, White Wrap	20"	1.0 mil	6000'	41 lbs
052535	1 Mil, White Wrap	30"	1.0 mil	5000'	61 lbs
052710	Repair Tape (16/Ctn)	3"	1.0 mil	180'	26 lbs



Twine Knives

Ring-style knives good for cutting twine, tape, plastic strapping or opening boxes. Cost-effective. Sold by the dozen.

Economy

Item #	Size	Weight
068050	#6	0.2 lbs
068055	#7	0.2 lbs
068060	#8	0.2 lbs
068065	#9	0.2 lbs
068070	#10	0.2 lbs
068075	#11	0.2 lbs
068080	#12	0.3 lbs
068085	#13	0.3 lbs
068090	#14	0.3 lbs
068095	#15	0.3 lbs

Safety Tip

Item #	Size	Weight
068040	#6	0.2 lbs
068041	#7	0.2 lbs
068042	#8	0.2 lbs
068043	#9	0.2 lbs
068044	#10	0.2 lbs
068045	#11	0.2 lbs
068046	#12	0.3 lbs
068047	#13	0.3 lbs
068048	#14	0.3 lbs
068049	#15	0.3 lbs

CWC: Rope and Twine Specialists with Decades of Experience to Help YOU!

Continental Western Corporation has been providing customers quality rope and cordage products for over 60 years. In order to better serve your needs, and become your one-stop supplier, CWC is proud to offer our **Rope and Twine Catalog**.

The products in this catalog have been chosen to ensure the highest value possible. Each item was selected based on its performance and durability, so CWC can continue to deliver the highest level of quality goods in the industry.

CWC's highly trained and knowledgeable sales staff is ready to serve you in all of your product needs. If your application requires products not featured in the catalog, we will find it for you.

CWC sincerely appreciates the opportunity to serve you. The next time you need rope or twine products, allow us to be your vendor of choice. We will be happy to quote you on items in this catalog, as well as any other product requirements that you may have.



Nominal Size			Polypropylene 3 Strand & 8 Braid			Poly/Dac™ 3 Strand & 8 Braid			Nylon 3 Strand & 8 Braid		
			Linear Density	Min Breaking Force	Working Load Ratio	Linear Density	Min Breaking Force	Working Load Ratio	Linear Density	Min Breaking Force	Working Load Ratio
Approx Dia	Size # (Circ)	Approx mm	Approx Lbs/100'	Lbs	Range Ratio	Approx Lbs/100'	Lbs	Range Ratio	Approx Lbs/100'	Lbs	Range Ratio
3/16"	5/8"	5	0.65	650	5 - 12 to 1				0.89	880	5 - 12 to 1
1/4"	3/4"	6	1.15	1,125	5 - 12 to 1	1.6	1,200	5 - 12 to 1	1.57	1,485	5 - 12 to 1
5/16"	1"	8	1.80	1,710	5 - 12 to 1	2.5	1,870	5 - 12 to 1	2.45	2,295	5 - 12 to 1
3/8"	1-1/8"	10	2.60	2,430	5 - 12 to 1	3.6	2,700	5 - 12 to 1	3.55	3,240	5 - 12 to 1
7/16"	1-1/4"	11	3.50	3,150	5 - 12 to 1	4.8	3,500	5 - 12 to 1	4.80	4,320	5 - 12 to 1
1/2"	1-1/2"	12	4.60	3,780	5 - 12 to 1	6.2	4,400	5 - 12 to 1	6.30	5,670	5 - 12 to 1
9/16"	1-3/4"	14	5.90	4,590	5 - 12 to 1	7.9	5,200	5 - 12 to 1	8.00	7,200	5 - 12 to 1
5/8"	2"	17	7.20	5,580	5 - 12 to 1	9.5	6,100	5 - 12 to 1	9.90	8,910	5 - 12 to 1
3/4"	2-1/4"	18	10.4	7,650	5 - 12 to 1	13.5	8,400	5 - 12 to 1	14.30	12,780	5 - 12 to 1
13/16"	2-1/2"	20	12.70	8,900	5 - 12 to 1						
7/8"	2-3/4"	22	14.2	10,350	5 - 12 to 1	18	11,125	5 - 12 to 1	19.50	17,280	5 - 12 to 1
1"	3"	24	18.0	12,825	5 - 12 to 1	21.8	13,175	5 - 12 to 1	25.30	22,230	5 - 12 to 1
1-1/8"	3-1/2"	28	22.8	16,000	5 - 12 to 1	27.1	16,325	5 - 12 to 1	32.20	28,260	5 - 12 to 1
1-1/4"	3-3/4"	30	27.6	19,350	5 - 12 to 1	33.4	19,900	5 - 12 to 1	39.70	34,830	5 - 12 to 1
1-5/16"	4"	32	30.4	21,150	5 - 12 to 1	36.5	21,950	5 - 12 to 1	43.70	38,250	5 - 12 to 1
1-1/2"	4-1/2"	36	39.4	27,350	5 - 12 to 1	47	28,250	5 - 12 to 1	57.00	48,600	5 - 12 to 1
1-5/8"	5"	40	46.0	31,950	5 - 12 to 1	55	32,950	5 - 12 to 1	67.30	57,375	5 - 12 to 1
1-3/4"	5-1/2"	44	53.0	36,900	5 - 12 to 1	62	36,850	5 - 12 to 1	78.00	66,150	5 - 12 to 1
2"	6"	48	69.0	46,800	5 - 12 to 1	81	48,050	5 - 12 to 1	100.00	84,600	5 - 12 to 1
2-1/8"	6-1/2"	52	78.0	52,650	5 - 12 to 1	91	53,950	5 - 12 to 1	113.00	95,400	5 - 12 to 1
2-1/4"	7"	56	88.0	59,400	5 - 12 to 1	101	59,950	5 - 12 to 1	127.00	107,100	5 - 12 to 1
2-1/2"	7-1/2"	60	107	72,000	5 - 12 to 1	124	73,550	5 - 12 to 1	157.00	131,400	5 - 12 to 1
2-5/8"	8"	64	120	80,500	5 - 12 to 1	136	80,650	5 - 12 to 1	173.00	144,000	5 - 12 to 1
2-3/4"	8-1/2"	68	141	94,500	5 - 12 to 1	161	95,400	5 - 12 to 1	208.00	171,000	5 - 12 to 1
3"	9"	72	153	102,600	5 - 12 to 1	174	102,900	5 - 12 to 1	226.00	185,400	5 - 12 to 1
3-1/4"	10"	80	186	121,500	5 - 12 to 1	212	122,800	5 - 12 to 1	275.00	224,100	5 - 12 to 1
3-1/2"	11"	88	223	144,000	5 - 12 to 1	250	144,800	5 - 12 to 1	329.00	267,300	5 - 12 to 1
4"	12"	96	272	171,900	5 - 12 to 1	300	171,000	5 - 12 to 1	400.00	324,000	5 - 12 to 1
4-1/4"	13"	104	315	198,000	5 - 12 to 1	345	195,800	5 - 12 to 1	450.00	369,000	5 - 12 to 1
4-1/2"	14"	112	360	223,200	5 - 12 to 1	395	224,800	5 - 12 to 1	525.00	418,500	5 - 12 to 1
5"	15"	120	420	256,500	5 - 12 to 1	455	254,700	5 - 12 to 1	610.00	480,600	5 - 12 to 1
5-5/16"	16"	128	474	287,100	5 - 12 to 1	506	282,600	5 - 12 to 1	685.00	532,800	5 - 12 to 1
5-5/8"	17"	136	531	319,500	5 - 12 to 1	562	312,300	5 - 12 to 1	767.00	589,500	5 - 12 to 1
6"	18"	144	603	358,200	5 - 12 to 1	635	351,000	5 - 12 to 1	870.00	660,600	5 - 12 to 1

- **Diameter** is approximate and is actually determined by linear density. (Pounds per 100')
- **Linear Density** is considered average weight per 100'. Tolerances: 3/16" - 5/16" diameters inclusive +plus or -minus 10%; 3/8" - 9/16" inclusive +plus or -minus 8%; and 5/8" and up +plus or -minus 5%.
- **New rope Minimum Breaking Strength** is based on data from a number of manufacturers and represents a value of 2 standard deviations below the mean, established by regression analysis.
- For critical applications where life or limb of **Dynamic Loading** is present, use the higher ratio division. Example: 10,000 pounds $\pm 12 = 833$ pounds working load ratio.

Specifications

Nominal Size			Polyester 3 Strand & 8 Braid			Manila 3 Strand			Sisal 3 Strand		
			Linear Density	Min Breaking Force	Working Load Ratio	Linear Density	Min Breaking Force	Working Load Ratio	Linear Density	Min Breaking Force	Working Load Ratio
Approx Dia	Size # (Circ)	Approx mm	Approx Lbs/100'	Lbs	Range Ratio	Approx Lbs/100'	Lbs	Range Ratio	Approx Lbs/100'	Lbs	Range Ratio
3/16"	5/8"	5	1.10	765	5 - 12 to 1	1.37	405	5 - 12 to 1	1.37	290	5 - 12 to 1
1/4"	3/4"	6	1.95	1,315	5 - 12 to 1	1.82	540	5 - 12 to 1	1.82	385	5 - 12 to 1
5/16"	1"	8	3.05	2,050	5 - 12 to 1	2.64	900	5 - 12 to 1	2.64	640	5 - 12 to 1
3/8"	1-1/8"	10	4.35	2,900	5 - 12 to 1	3.79	1,215	5 - 12 to 1	3.79	865	5 - 12 to 1
7/16"	1-1/4"	11	5.9	3,915	5 - 12 to 1	4.87	1,575	5 - 12 to 1	4.87	1,120	5 - 12 to 1
1/2"	1-1/2"	12	7.7	5,085	5 - 12 to 1	6.96	2,385	5 - 12 to 1	6.96	1,700	5 - 12 to 1
9/16"	1-3/4"	14	9.8	6,435	5 - 12 to 1	9.63	3,105	5 - 12 to 1	9.63	2,210	5 - 12 to 1
5/8"	2"	17	12.0	7,825	5 - 12 to 1	12.7	3,960	5 - 12 to 1	12.7	2,815	5 - 12 to 1
3/4"	2-1/4"	18	17.2	11,200	5 - 12 to 1	15.9	4,860	5 - 12 to 1	15.9	3,455	5 - 12 to 1
13/16"	2-1/2"	20				18.6	5,850	5 - 12 to 1			
7/8"	2-3/4"	22	23.4	15,225	5 - 12 to 1	21.4	6,930	5 - 12 to 1	21.4	4,930	5 - 12 to 1
1"	3"	24	30.4	19,775	5 - 12 to 1	25.7	8,100	5 - 12 to 1	25.7	5,760	5 - 12 to 1
1-1/8"	3-1/2"	28	38.5	24,800	5 - 12 to 1	34.3	10,800	5 - 12 to 1	34.3	7,680	5 - 12 to 1
1-1/4"	3-3/4"	30	46.5	29,800	5 - 12 to 1	39.7	12,150	5 - 12 to 1	39.7	8,640	5 - 12 to 1
1-5/16"	4"	32	51	32,500	5 - 12 to 1	45.6	13,500	5 - 12 to 1	45.6	9,600	5 - 12 to 1
1-1/2"	4-1/2"	36	67	42,200	5 - 12 to 1	57.0	16,650	5 - 12 to 1	57.0	11,840	5 - 12 to 1
1-5/8"	5"	40	78	49,250	5 - 12 to 1	71.1	20,250	5 - 12 to 1	71.1	14,400	5 - 12 to 1
1-3/4"	5-1/2"	44	91	57,000	5 - 12 to 1	85.0	23,850	5 - 12 to 1	85.0	16,960	5 - 12 to 1
2"	6"	48	117	72,000	5 - 12 to 1	102	27,900	5 - 12 to 1			
2-1/8"	6-1/2"	52	133	81,000	5 - 12 to 1	120	32,400	5 - 12 to 1	120	19,840	5 - 12 to 1
2-1/4"	7"	56	149	90,500	5 - 12 to 1	139	36,900	5 - 12 to 1	139	26,240	5 - 12 to 1
2-1/2"	7-1/2"	60	184	110,000	5 - 12 to 1	164	42,300	5 - 12 to 1	164	30,075	5 - 12 to 1
2-5/8"	8"	64	203	121,000	5 - 12 to 1	182	46,800	5 - 12 to 1	182	33,280	5 - 12 to 1
2-3/4"	8-1/2"	68	243	144,000	5 - 12 to 1	215	54,900	5 - 12 to 1			
3"	9"	72	264	156,000	5 - 12 to 1	230	57,500	5 - 12 to 1	230	40,960	5 - 12 to 1
3-1/4"	10"	80	323	188,500	5 - 12 to 1	284	69,500	5 - 12 to 1			
3-1/2"	11"	88	387	225,000	5 - 12 to 1	349	81,900	5 - 12 to 1			
4"	12"	96	470	270,000	5 - 12 to 1	414	94,500	5 - 12 to 1			
4-1/4"	13"	104	547	310,000	5 - 12 to 1						
4-1/2"	14"	112	630	355,000	5 - 12 to 1						
5"	15"	120	732	410,000	5 - 12 to 1						
5-5/16"	16"	128	825	459,000	5 - 12 to 1						
5-5/8"	17"	136	925	508,500	5 - 12 to 1						
6"	18"	144	1,050	567,000	5 - 12 to 1						

- **Diameter** is approximate and is actually determined by linear density. (Pounds per 100')
- **Linear Density** is considered average weight per 100'. Tolerances: 3/16" - 5/16" diameters inclusive +plus or -minus 10%; 3/8" - 9/16" inclusive +plus or -minus 8%; and 5/8" and up +plus or -minus 5%.
- **New rope Minimum Breaking Strength** is based on data from a number of manufacturers and represents a value of 2 standard deviations below the mean, established by regression analysis.
- For critical applications where life or limb of **Dynamic Loading** is present, use the higher ratio division. Example: 10,000 pounds \div 12 = 833 pounds working load ratio.

Nominal Size			CWC Blue Steel™ Super Strength Poly 3 Strand & 8 Braid			CWC Ice Blue™ Combo Super Strength Blended 3 Strand & 8 Braid			Polyester 12 Strand		
			Linear Density	Min Breaking Force	Working Load Ratio	Linear Density	Min Breaking Force	Working Load Ratio	Linear Density	Min Breaking Force	Working Load Ratio
Approx Dia	Size # (Circ)	Approx mm	Approx Lbs/100'	Lbs	Range Ratio	Approx Lbs/100'	Lbs	Range Ratio	Approx Lbs/100'	Lbs	Range Ratio
3/16"	5/8"	5	.67	950	5 - 12 to 1						
1/4"	3/4"	6	1.17	1,600	5 - 12 to 1						
5/16"	1"	8	2	3,100	5 - 12 to 1						
3/8"	1-1/8"	10	2.5	3,800	5 - 12 to 1	3.3	4,040	5 - 12 to 1	4.4	3,870	5 - 12 to 1
7/16"	1-1/4"	11	3	4,700	5 - 12 to 1	4.5	5,090	5 - 12 to 1	5.9	5,175	5 - 12 to 1
1/2"	1-1/2"	12	4.5	6,600	5 - 12 to 1	5.8	6,240	5 - 12 to 1	7.7	6,700	5 - 12 to 1
9/16"	1-3/4"	14	6	8,900	5 - 12 to 1	7.4	7,830	5 - 12 to 1	9.8	8,350	5 - 12 to 1
5/8"	2"	17	7.7	11,000	5 - 12 to 1	9.5	9,800	5 - 12 to 1	12.1	10,375	5 - 12 to 1
3/4"	2-1/4"	18	9.83	13,900	5 - 12 to 1	12.7	12,700	5 - 12 to 1	17.4	14,850	5 - 12 to 1
7/8"	2-3/4"	22	14.7	20,100	5 - 12 to 1	18	17,470	5 - 12 to 1	23.6	18,800	5 - 12 to 1
1"	3"	24	17.3	23,100	5 - 12 to 1	22	21,300	5 - 12 to 1	30.8	25,650	5 - 12 to 1
1-1/8"	3-1/2"	28	23.7	30,000	5 - 12 to 1	28.8	28,000	5 - 12 to 1	39.0	32,400	5 - 12 to 1
1-1/4"	3-3/4"	30	26.7	32,900	5 - 12 to 1	33.3	34,200	5 - 12 to 1	48.0	39,600	5 - 12 to 1
1-1/2"	4-1/2"	36	39	46,100	5 - 12 to 1	50.5	47,500	5 - 12 to 1	68.8	55,350	5 - 12 to 1
1-5/8"	5"	40	48	55,600	5 - 12 to 1	59.0	60,420		80.5	64,450	5 - 12 to 1
1-3/4"	5-1/2"	44	58.7	66,500	5 - 12 to 1	70.5	66,300	5 - 12 to 1	93.0	74,150	5 - 12 to 1
2"	6"	48	75.2	83,500	5 - 12 to 1	88.7	82,900	5 - 12 to 1	121	96,300	5 - 12 to 1
2-1/8"	6-1/2"	52	84.3	90,725	5 - 12 to 1	100.9	94,240	5 - 12 to 1	136	108,000	5 - 12 to 1
2-1/4"	7"	56	101.5	107,100	5 - 12 to 1	120.3	112,500	5 - 12 to 1	152	120,600	5 - 12 to 1
2-1/2"	7-1/2"	60	115.8	122,300	5 - 12 to 1	134.7	126,000	5 - 12 to 1	188	148,950	5 - 12 to 1
2-5/8"	8"	64	130.9	137,750	5 - 12 to 1	151.7	157,000	5 - 12 to 1	207	163,800	5 - 12 to 1
2-3/4"	8-1/2"	68	155.7	162,165	5 - 12 to 1	178.6	175,940	5 - 12 to 1	248	195,300	5 - 12 to 1
3"	9"	72	169	176,000	5 - 12 to 1	190.8	178,400	5 - 12 to 1	270	212,400	5 - 12 to 1
3-1/4"	10"	80	198	226,700	5 - 12 to 1	234.6	238,830	5 - 12 to 1	329	256,500	5 - 12 to 1
3-1/2"	11"	88	233.5	241,680	5 - 12 to 1	282.4	289,085	5 - 12 to 1	392	305,100	5 - 12 to 1
4"	12"	96	283	319,800	5 - 12 to 1	337.7	341,430	5 - 12 to 1	475	369,000	5 - 12 to 1
4-1/4"	13"	104							550	425,700	5 - 12 to 1
5"	15"	120			5 - 12 to 1				737	567,00	5 - 12 to 1

Continental Western Corporation carries more cordage than reflected in the specification pages of this catalog. For additional specifications on any rope, please contact a customer service representative at your local CWC branch, or refer to the manufacturer.

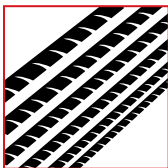
Copyright © 2014 Continental Western Corporation. CWC is a trademark of Continental Western Corporation. All rights reserved. This book or any portion thereof may not be reproduced or used in any manner whatsoever without the express written permission of an officer of Continental Western Corporation.

Specifications

Nominal Size			CWC Blue Steel™ Copolymer 12 Strand			Spectra® 12 Strand			Plasma® 12 Strand		
			Linear Density	Min Breaking Force	Working Load Ratio	Linear Density	Min Breaking Force	Working Load Ratio	Linear Density	Min Breaking Force	Working Load Ratio
Approx Dia	Size # (Circ)	Approx mm	Approx Lbs/100'	Lbs	Range Ratio	Approx Lbs/100'	Lbs	Range Ratio	Approx Lbs/100'	Lbs	Range Ratio
1/4"	3/4"	6		1,730	5 - 12 to 1	1.6	6,000	5 - 12 to 1	1.6	8,000	5 - 12 to 1
5/16"	1"	8		3,250	5 - 12 to 1	2.6	9,000	5 - 12 to 1	2.5	11,700	5 - 12 to 1
3/8"	1-1/8"	10		4,110	5 - 12 to 1	3.7	13,900	5 - 12 to 1	3.7	17,500	5 - 12 to 1
7/16"	1-1/4"	11		5,800	5 - 12 to 1	4.2	14,800	5 - 12 to 1	4.2	21,000	5 - 12 to 1
1/2"	1-1/2"	12	5.40	6,900	5 - 12 to 1	6.4	22,500	5 - 12 to 1	6.4	31,300	5 - 12 to 1
9/16"	1-3/4"	14	7.35	9,400	5 - 12 to 1	7.9	27,700	5 - 12 to 1	7.9	37,900	5 - 12 to 1
5/8"	2"	17	9.60	12,200	5 - 12 to 1	10.6	36,600	5 - 12 to 1	10.6	51,400	5 - 12 to 1
3/4"	2-1/2"	18	12.50	15,900	5 - 12 to 1	13.3	43,300	5 - 12 to 1	13.3	68,500	5 - 12 to 1
7/8"	2-3/4"	22	17.00	21,200	5 - 12 to 1	19.6	61,000	5 - 12 to 1	19.6	92,600	5 - 12 to 1
1"	3"	24	19.40	25,200	5 - 12 to 1	23.4	72,000	5 - 12 to 1	23.4	110,000	5 - 12 to 1
1-1/8"	3-1/2"	28	26.50	33,500	5 - 12 to 1	31.9	91,800	5 - 12 to 1	31.9	147,000	5 - 12 to 1
1-1/4"	3-3/4"	30	30.30	37,000	5 - 12 to 1	36.2	102,600	5 - 12 to 1	36.2	165,000	5 - 12 to 1
1-5/16"	4"	32	34.30	42,800	5 - 12 to 1	41.7	114,300	5 - 12 to 1	41.7	196,000	5 - 12 to 1
1-1/2"	4-1/2"	36	43.10	53,200	5 - 12 to 1	51.7	141,300	5 - 12 to 1	51.7	221,000	5 - 12 to 1
1-5/8"	5"	40	53.10	65,600	5 - 12 to 1	65.7	167,400	5 - 12 to 1	65.7	291,000	5 - 12 to 1
1-3/4"	5-1/2"	44	65.50	78,400	5 - 12 to 1	78.4	198,000	5 - 12 to 1	78.4	314,000	5 - 12 to 1
2"	6"	48	80.20	96,000	5 - 12 to 1	91.4	225,000	5 - 12 to 1	91.4	355,000	5 - 12 to 1
2-1/8"	6-1/2"	52	93.50	110,600	5 - 12 to 1	109	270,000	5 - 12 to 1	109	428,000	5 - 12 to 1
2-1/4"	7"	56	108.50	126,600	5 - 12 to 1	122	317,700	5 - 12 to 1	122	481,000	5 - 12 to 1
2-1/2"	7-1/2"	60	124.40	144,700	5 - 12 to 1	148	360,000	5 - 12 to 1	148	530,000	5 - 12 to 1
2-5/8"	8"	64	141.10	162,800	5 - 12 to 1	167	370,800	5 - 12 to 1	167	596,000	5 - 12 to 1
2-3/4"	8-1/2"	68	156.50	181,900	5 - 12 to 1	187	405,000	5 - 12 to 1	187	660,000	5 - 12 to 1
3"	9"	72	178.10	206,900	5 - 12 to 1	214	508,500	5 - 12 to 1	214	780,000	5 - 12 to 1
3-1/4"	10"	80	220.00	250,530	5 - 12 to 1	261	616,500	5 - 12 to 1	261	940,000	5 - 12 to 1
4"	12"	96	314.50	353,400	5 - 12 to 1	394	900,000	5 - 12 to 1	394	1,520,000	5 - 12 to 1

Pictured Below: Break testing of a high-strength 8 braid mooring line.





Diameter & Size Values

Cordage dimensions are generally given in cord diameter, presented in fractional inches in this book, or in industry standard size numbers.

Size is determined by linear density; diameter is given as a minimal value, and it may vary slightly. If a specific diameter value is specified, linear density and minimum breaking strength values may be different from those given in tables. Size number is given as a reference to standardized rope values.

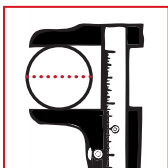


Choosing a Rope

Be sure the rope selected is adequate for the task at hand.

Careful selection of appropriate cordage diameter, fiber and construction is essential for safety and efficiency. This catalog provides general rope specifications. Specific information regarding strength and recommended working loads for various sizes and constructions of hard fiber and synthetic rope are available from your distributor, dealer or the manufacturer.

NOTE: Due to the wide range of rope uses, factors affecting rope behavior, and the degree of risk to life and property involved, it is impossible to cover all rope applications in this catalog. Information in this publication is also not intended to apply to rescue rope.



Specific Rope Values

Minimum breaking strength and working loads are derived from analysis of data from a number of manufacturers.

To provide guidelines, a range of generalized working loads and break strengths are presented in this catalog for ropes in good condition, with appropriate splices, in non-critical applications, and under normal service conditions. "Normal service" is generally considered to be rope use under static or modest dynamic load conditions. (See *Dynamic Loading*)

Because of the wide range of uses, rope conditions, working environments, and the degree of risk to life and property involved, it is not realistic to make specific recommendations regarding working loads without careful analysis of the requirements of the working conditions, and application in which the rope will be used.

Conditions that could potentially affect working load and break strength include:

- Elongation
- Energy absorption
- Loading behavior
- Environmental factors.

Other properties may be evaluated to facilitate the selection of a rope best suited to the requirements.

Critical Conditions of Use

Extra care should be taken in the selection of rope in situations where:

- Small diameter ropes are used; smaller ropes are damaged more easily by cutting, abrasion and sunlight
- Loads are not accurately calculated
- Operators are poorly trained
- Operation and use procedures are not well-defined and/or controlled
- Rope inspection is infrequent
- Abrasion, cuts and/or dirt is present
- Shock loading or extreme dynamic loading is likely
- High temperatures and/or chemicals are present
- Ropes are stored improperly
- Ropes are kept in service indefinitely
- Tension on the rope is maintained for extended periods
- Rope is subject to sharp bends, as when used with pulleys or surfaces with too small a radius
- Knots are used: strength is reduced by up to 50%
- Death, injury or loss of valuable property may result from rope failure

Special Safety Note

It is dangerous for anyone to be in the snap zone of a rope under excessive tension. Should the rope fail, it may recoil with considerable force, especially if the rope is nylon. Death or serious injury may result. Persons must be warned against standing in line with the rope.



Dynamic Loading

Do not overload rope. Sudden strains of shock loading can cause failure.

Avoid sudden strain - shock loads can exceed breaking strength and cause failure of a rope normally strong enough to handle the load. Working loads are not applicable when the rope is subject to significant dynamic loading. Whenever a load is picked up, stopped, moved, or swung, there is an increased force, due to dynamic loading. The more rapidly or suddenly such actions occur, the greater this increase will be. In extreme cases, the force put on the rope may be two or more times the normal load involved. Examples include picking up a tow on a slack line, or using a rope to stop a falling object. Working loads as given may not apply in applications as such as tow lines, life lines, safety lines or climbing ropes, unless specified otherwise.

Users should be aware that dynamic effects are greater on a low elongation rope such as manila, than on a high elongation rope such as nylon, and greater on shorter rope as opposed to longer. When a rope has been secured to a load, the load must be handled slowly and smoothly to minimize dynamic effect. Dynamic loading of a high-elongation rope, especially nylon, can be particularly dangerous. Energy stored in the rope can cause it to recoil at a high velocity if it fails, causing damage to property, injury or even death. (See *Special Safety Note*)



Checking for Wear

Avoid using rope that shows signs of aging and wear. If in doubt, discard the used rope.

No type of visual inspection can be guaranteed to accurately and precisely determine actual residual strength. When the fibers show wear in any given area, the rope should be re-spliced, downgraded, or replaced. Check the line regularly for frayed strands and broken yarns. Pulled strands should be re-threaded into the rope if possible. A pulled strand can snag on a foreign object during a rope operation.

Both outer and inner rope fibers contribute to the strength of the rope. When either is worn, the rope is naturally weakened. To check for wear, spread the rope strands slightly (both 3 strand or braided) and look for powdered fiber, one sign of internal wear. A heavily used rope will often become compacted or hard which also indicates reduced strength. Ropes should be discarded if these conditions exist.



Pulling from Coils & Reels

Remove rope properly from coils and reels to prevent kinking.

Rope which comes coiled should always be uncoiled from the inside, as directed by the manufacturer. If on a reel, rope should be removed by pulling it from the top while the reel is free to rotate vertically. This can be accomplished using a reel stand, or by suspending the rope on a pipe or rod placed horizontally through the reel center, high enough to allow the reel to rotate freely. Pulling the rope in any other manner may cause kinks or hockles.

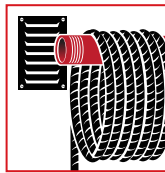


Handling Rope

Handle rope properly to avoid accidents.

Swap rope ends regularly, particularly when used in tackle. This allows even wearing and assures longer, more useful rope life.

When using tackle or slings, apply a steady, even pull to get full strength from rope. For maximum safety and economy, always use slings employing an angle of approximately 45°. Refer to previous page, regarding the dangers of excessive tension and snap back.



Storage & Care

All rope should be stored clean, dry, out of direct sunlight, and away from heat.

Cordage should be housed in a cool, dry and well-ventilated area. Rope should be kept off the floor, and on racks, to allow for adequate ventilation underneath. Never store rope on a concrete or dirt floor, and under no circumstances should rope and acid or alkalis be kept in the same building. Natural fiber ropes will mildew and decay if stored in wet conditions. Do not leave rope in direct sunlight. Polypropylene, polyethylene and other synthetic ropes are prone to degradation from long-term exposure to UV rays, and must be kept out of direct sunlight in order to maintain strength. Pigmented or UV-stabilized synthetic ropes have increased resistance to sunlight. UV degradation is indicated by discoloration and the presence of fiber splinters and slivers on the surface of the rope.



Winching Lines

Proper procedures will prevent kinks and hockles in 3 strand twisted rope.

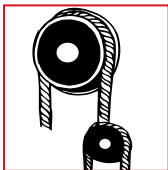
Repeated hauling of a line over a winch in a counterclockwise direction will extend the lay of twisted rope and simultaneously change the twist of each strand. As this action continues, strand hockles or back turning may develop. Once these hockles appear, they cannot be removed, and the rope is permanently damaged at the point of hockling. If the line is continuously hauled over a winch in a clockwise direction, the rope lay is shortened, and the rope becomes stiff and will kink readily.



Splicing

Join rope ends by splicing.

Most ropes can be spliced. This is the preferred method of joining ropes. A good splice, using the recommended method, should not reduce the strength of a rope by more than 10%. Knots can decrease rope strength by as much as 60%. Use the manufacturer's recommended splices for maximum efficiency. Other methods of joining rope ends can be used, but strength loss with a particular type of rope construction should be researched, not assumed.



Hardware

Hardware components must match.

Make certain that components such as hooks, clamps or pulleys are of suitable material and strength to provide adequate safety protection. Attachments must be properly installed and have a **working load limit** of at least equal to the product with which they are used.



Chemicals

Avoid unnecessary exposure to chemicals, acids and alkalis.

Chemicals can severely weaken a rope without leaving obvious signs, especially battery acid and solvents. Even the vapors from chemicals can weaken a rope. This is particularly true for natural fiber ropes. Consult the manufacturer for recommendations based on chemical resistance properties, or for information pertaining to exposure to specific chemicals, such as to solvents, acids or alkalis.



Heat

Avoid overheating.

Heat can seriously affect the strength of rope. When using rope in temperatures exceeding 140°F, in applications where rope is continuously exposed to heat, or any situation where rope is too hot to handle, consult the manufacturer. When using ropes on a capstan or winch, care should be exercised to avoid surging while the capstan or winch head is rotating. Friction from this slippage causes localized overheating, which can melt or fuse synthetic fibers, or burn natural fibers, resulting in severe loss of tensile strength.

Caution should be exercised when using synthetic fiber ropes at elevated temperatures. Synthetic ropes will show a reduction in strength when used at a high heat, and may fail under loads well below its published break strength. Additionally, synthetic ropes can exhibit heat weakening or failure even when used under normal conditions, if ropes are stored in a high temperature environment.

CAUTION: Heat can seriously affect the strength of synthetic ropes. Polypropylene can lose up to 50% of its strength at 150°F; Nylon, at 350°F; Polyester at 350°F. Check with manufacturer for information about any synthetic ropes not listed here.



Abrasion

Avoid all abrasive conditions.

Any rope can be severely damaged if subject to rough surfaces or sharp edges. Chocks, bits, winches, drums and other surfaces that come into contact with a rope must be kept in good condition, free of burrs and rust. Pulleys must be able to rotate freely, and should be of proper size to avoid excessive rope wear. Restraining clamps and similar devices can weaken rope, and should be used with extreme caution. Never step on a rope. When dirt or grit is worked into the sheath, it will invisibly abrade the core.

The Cordage Institute publishes standards for strengths, weights and testing procedures. Please contact CWC for a copy of the publications list.

Copyright © 2015 Continental Western Corporation. CWC is a trademark of Continental Western Corporation. All rights reserved. This book or any portion thereof may not be reproduced or used in any manner whatsoever without the express written permission of an officer of Continental Western Corporation.



Continental Western Corporation
2950 Merced Street, Suite 200
San Leandro, CA 94577

For additional products and ordering information, please visit us online at www.cwcglobal.com or contact us directly at one of our 8 convenient locations

Seattle, WA

Tel: (206) 623-0466 • Fax: (206) 682-6205

Denver, CO

Tel: (303) 375-1506 • Fax: (303) 375-1507

Portland, OR

Tel: (503) 223-5194 • Fax: (503) 223-6729

Houston, TX

Tel: (713) 926-3868 • Fax: (713) 926-3869

Los Angeles, CA

Tel: (562) 903-1214 • Fax: (562) 903-1218

Chicago, IL

Tel: (630) 834-8393 • Fax: (630) 834-6370

Oakland, CA

Tel: (510) 352-3133 • Fax: (510) 352-0148

New Orleans, LA

Tel: (504) 733-6057 • Fax: (504) 733-6642

www.cwcglobal.com