

Straight Blade Devices

COBRA® Heavy Duty Plugs and Connectors



- Hinged one piece body opens wide for easy wiring
- High visibility yellow for easy identification
- Impact/chemical resistant nylon construction
- Clamp-type terminals ensure secure wire terminations
- Adjustable cord inserts accommodate .220 - .660 in. (5.6 - 16.8mm) diameter cord
- Internal cord grips prevent conductor slippage
- Amperage/voltage rating molded in face

Why Bryant's COBRA Plugs and Connectors are Superior

Bryant's Cobra line of plugs and connectors have "high-visibility" yellow devices that are economical and fast to wire. The removable cord grip inserts offer a simple way of accommodating a wide range of cord diameters, while providing a powerful hold to prevent slippage and strain. The tough nylon body is designed for easy installation and includes captive screws which stay in place while wiring.

15A and 20A 125V and 250V Plugs and Connectors, 2-Pole 3-Wire

Inches (mm)

COBRA®

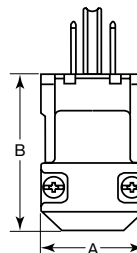
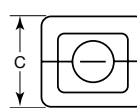


Device Type		Plug		Connector	
Rating	Cord Diameter	High Visibility Nylon Yellow	Insulation Displacement Nylon Black	High Visibility Nylon Yellow	Insulation Displacement Nylon Black
NEMA 5-15, 15A 125V	.220"-.660" (7.6-16.8)	BRY5965Y	5966VBK	BRY5969Y	5969VBK
NEMA 5-20, 20A 125V	.220"-.660" (7.6-16.8)	5364Y	—	5369Y	—
NEMA 6-15, 15A 250V	.220"-.660" (7.6-16.8)	5666Y	—	5669Y	—
NEMA 6-20, 20A 250V	.220"-.660" (7.6-16.8)	5464Y	—	5469Y	—

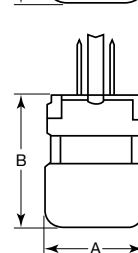
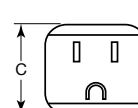
Product Dimensions

Inches (mm)

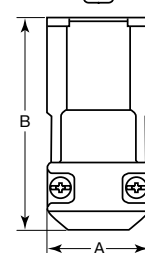
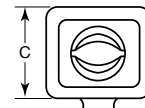
	Plug		Connector	
	Yellow	Black	Yellow	Black
A	1.25" (31.8)	1.24" (31.5)	1.25" (31.8)	1.25" (31.8)
B	1.13" (28.7)	1.17" (29.7)	1.12" (28.4)	1.17" (29.7)
C	1.88" (47.8)	1.60" (40.6)	2.62" (66.5)	2.25" (57.2)



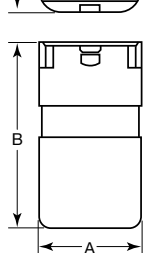
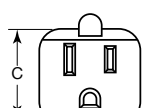
BRY5965Y



5966VBK



BRY5969Y



5969VBK