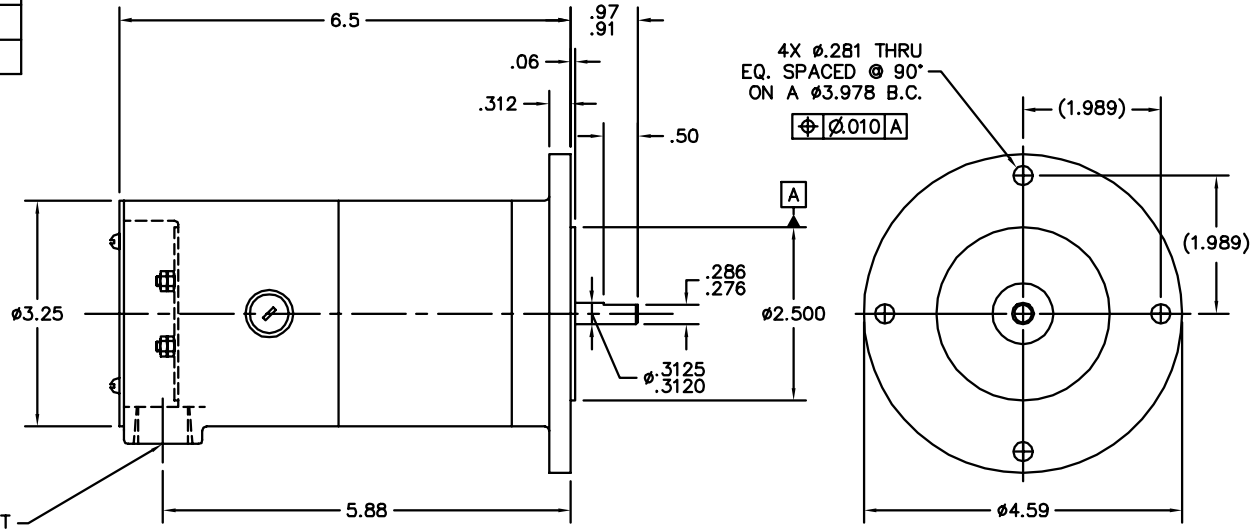
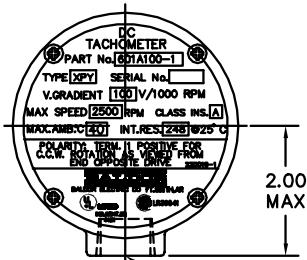


DASH NO.	OUTPUT ±5% VDC/1000 RPM	SPEED RANGE RPM	CURRENT AMPS(MAX)
1	100	100-2500	.20
2	50	100-5000	.40
3	50	100-5000	.40
4	200	100-1250	.10
5	20	100-5000	1
6	60	100-5000	.33
7	12	100-5000	1.67
8	126	100-2500	.15
9	184	100-1250	.10



NOTES:

1. THE COMPLETE P/N CONSISTS OF 601A100 WITH A TACH NO. (EX. 601A100-2).
2. TERMINAL #2 IS PLUS AND #1 IS MINUS WHEN THE SHAFT IS ROTATED CCW (WHEN LOOKING INTO THE SHAFT PROJECTING FROM THE MOUNTING FLANGE).
3. FOR MAX. ACCURACY (LINEARITY), GENERATORS MUST BE RUN AT VERY LOW LOADS.
4. REVERSING ERROR FOR ALL UNITS LESS THAN 2%.
5. BUSHING MUST BE U.L. RECOGNIZED.

CUSTOMER IS RESPONSIBLE FOR DETERMINING THAT BALDOR'S PRODUCT WILL PERFORM SUITABLY IN THE INTENDED APPLICATION.

REV. DESC: MOVE TO CK DESIGN		
REV. LTR: J	VERSION: 01	TDR: 000000437321
FILE: \CKA\00036\138	REVISED: 08:01:24 08/09/2011	BY: CKAPRBO
MTL: -		

BALDOR • DODGE • RELIANCE

XPY TACHOMETER

SH 1 of 1