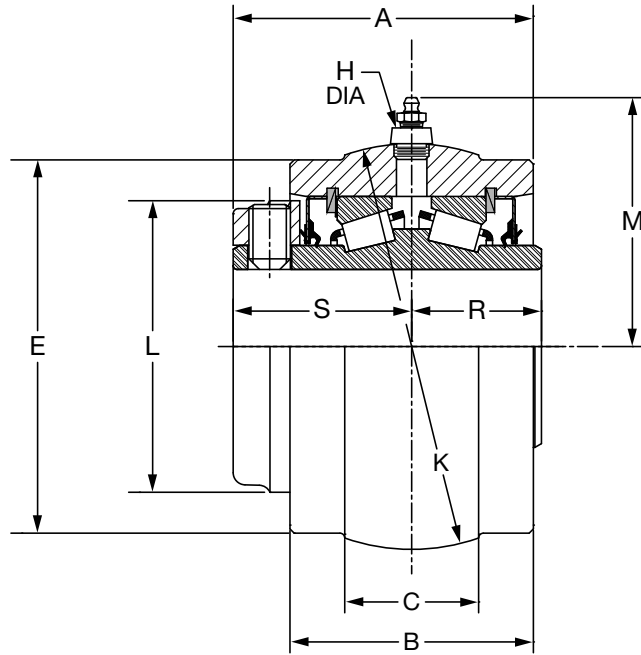
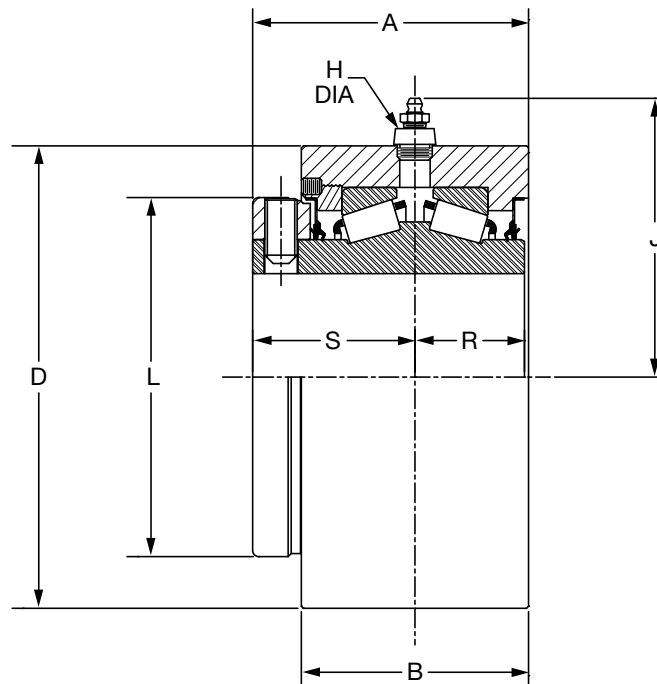




## Type K Units - Inch



S-1 UNIT  
1-3/16" THRU 3" CONSTRUCTION



B-1 UNIT  
3-3/16" THRU 3-15/16" CONSTRUCTION

FEATURES/BENEFITS PAGE B10-2	HOW TO ORDER/NOMENCLATURE PAGE B10-9	EASY SELECTION PAGE B10-15	ACCESSORIES PAGE B10-64
---------------------------------	---	-------------------------------	----------------------------

# SELECTION/DIMENSIONS



## Type K Units - Inch

Type S-1 Units -- Gray Iron				Type B-1 Units -- Gray Iron			
Shaft Size Inches #	Part Number	Part Name	Weight Lbs (Approx)	Shaft Size Inches #	Part Number	Part Name	Weight Lbs (Approx)
1-3/16	<b>023271</b>	S1U-K-103R	3	1-3/16	-----	B1U-K-103R	3
1-1/4	<b>023272</b>	S1U-K-104R	3	1-1/4	-----	B1U-K-104R	3
1-3/8	<b>023273</b>	S1U-K-106R	4	1-3/8	<b>023293</b>	B1U-K-106R	4
1-7/16	<b>023274</b>	S1U-K-107R	4	1-7/16	<b>023294</b>	B1U-K-107R	4
1-1/2	<b>023275</b>	S1U-K-108R	5	1-1/2	<b>023295</b>	B1U-K-108R	5
1-5/8	<b>023276</b>	S1U-K-110R	5	1-5/8	<b>023296</b>	B1U-K-110R	5
1-11/16	<b>023277</b>	S1U-K-111R	5	1-11/16	<b>023297</b>	B1U-K-111R	5
1-3/4	<b>023278</b>	S1U-K-112R	7	1-3/4	<b>023298</b>	B1U-K-112R	7
1-15/16	<b>023279</b>	S1U-K-115R	7	1-15/16	<b>023299</b>	B1U-K-115R	7
2	<b>023280</b>	S1U-K-200R	7	2	<b>023300</b>	B1U-K-200R	7
2-3/16	<b>023281</b>	S1U-K-203R	9	2-3/16	<b>023301</b>	B1U-K-203R	9
2-1/4	<b>023282</b>	S1U-K-204R	11	2-1/4	<b>023302</b>	B1U-K-204R	11
2-7/16	<b>023283</b>	S1U-K-207R	11	2-7/16	<b>023303</b>	B1U-K-207R	11
2-1/2	<b>023284</b>	S1U-K-208R	11	2-1/2	<b>023304</b>	B1U-K-208R	11
2-11/16	<b>023285</b>	S1U-K-211R	15	2-11/16	<b>023305</b>	B1U-K-211R	15
2-3/4	<b>023286</b>	S1U-K-212R	15	2-3/4	<b>023306</b>	B1U-K-212R	15
2-15/16	<b>023287</b>	S1U-K-215R	15	2-15/16	<b>023307</b>	B1U-K-215R	15
3	<b>023288</b>	S1U-K-300R	15	3	<b>023308</b>	B1U-K-300R	15
3-3/16	<b>023289</b>	S1U-K-303R	28	3-3/16	<b>023309</b>	B1U-K-303R	28
3-7/16	<b>023290</b>	S1U-K-307R	28	3-7/16	<b>023310</b>	B1U-K-307R	28
3-1/2	<b>023291</b>	S1U-K-308R	28	3-1/2	<b>023311</b>	B1U-K-308R	28
3-15/16	<b>023292</b>	S1U-K-315R	40	3-15/16	<b>023312</b>	B1U-K-315R	40

# Consult DODGE For Sizes Not Listed.

# Consult DODGE For Sizes Not Listed.

Shaft Size Inches	A	B	C	D *	E%		H	J	K **	L	M	R	S
					Machine Side	Cast Side							
1-3/16	2.31	1.88	1.03	----	2.81	3.13	0.44	----	3.125	2.25	2.03	1.00	1.38
1-1/4													
1-3/8	2.53	2.06	1.16	3.438	3.25	3.31	0.69	2.63	3.625	2.75	2.63	1.03	1.50
1-7/16													
1-1/2	2.84	2.31	1.19	3.948	3.75	3.81	0.69	2.88	4.125	3.19	2.81	1.16	1.69
1-5/8													
1-11/16													
1-3/4	2.97	2.44	1.50	4.250	4.13	4.19	0.69	3.00	4.562	3.44	3.06	1.20	1.75
1-15/16													
2	3.16	2.56	1.56	4.625	4.50	4.56	0.69	3.25	5.000	3.75	3.25	1.25	1.88
2-3/16													
2-1/4	3.38	2.75	1.44	5.000	4.81	4.88	0.69	3.44	5.186	4.06	3.38	1.31	2.00
2-7/16													
2-1/2													
2-11/16	3.75	3.00	1.88	5.875	5.56	5.63	0.69	3.88	6.061	4.72	3.81	1.44	2.25
2-3/4													
2-15/16													
3													
3-3/16	4.25	3.50	2.00	7.125	6.81	6.88	0.69	4.50	7.373	5.50	4.50	1.69	2.50
3-7/16													
3-1/2													
3-15/16	5.38	4.50	2.38	7.875	7.44	7.50	0.94	5.50	7.997	6.00	5.16	2.13	3.13

\* +.000 -.002,"

% Machined side of unit is on collar side only.

NOTE: All sizes use a 1/8-27 NPT hydraulic grease fitting

\*\* +.000 -.001 Sizes 1-3/16 THRU 3,"

±.0005, Sizes 3-3/16 THRU 3-15/16,"

ALL DIMENSIONS SHOWN IN Inches

FEATURES/BENEFITS PAGE B10-2	HOW TO ORDER/NOMENCLATURE PAGE B10-9	EASY SELECTION PAGE B10-15	ACCESSORIES PAGE B10-64
---------------------------------	---	-------------------------------	----------------------------