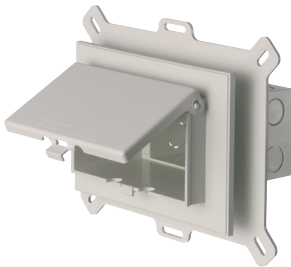


## Low Profile IN BOX™ for New Vinyl Siding Construction



DBVS1C



DBHS1W

One-piece, 22.0 cu. inch recessed electrical box with weatherproof-in-use extra-duty cover for new siding applications. Non-metallic cover and base. Accepts most single gang wiring devices and uses standard indoor wall plates or a GFCI cover plate. Box and white cover are textured/paintable. UV rated plastic for long outdoor life.

### FEATURES AND BENEFITS

- IN BOX's one-piece assembly replaces the installation of an electrical box, siding block, and bubble cover assembly
- Installs in the wall, so less of it shows outside
- Outer flange covers cut ends of siding
- Install option: Cover is removable for easier device installation
- No gaskets required

CATALOG NUMBER	UPC/DCI/NAED MFG #018997	ORIENTATION/COVER COLOR	SIDING TYPE	UNIT PKG	STD PKG	DIM A	DIM B	DIM C	DIM D	DIM E
DBVS1C	14317	Vertical/Clear	All Types	1	4	9.058	7.012	5.160	1.313	2.879
DBVS1W	14318	Vertical/White	All Types	1	4	9.058	7.012	5.160	1.313	2.879
DBHS1C	77600	Horizontal/Clear	All Types	1	4	7.012	9.058	5.160	1.313	2.879
DBHS1W	77602	Horizontal/White	All Types	1	4	7.012	9.058	5.160	1.313	2.879

Add suffix "GC" to Catalog # when ordering in Canada, for example DBVS1CGC.

Replacement covers available on page K-17.

2-Gang, style available on page K-8.

**PATENTED. ADDITIONAL PATENTS PENDING.**

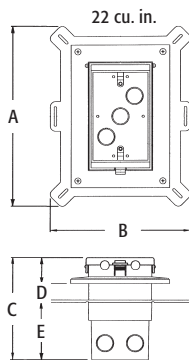
Note: Meets 2015 CEC (Rule 26-702), NEMA 3R, NEC 406.9 (b); Where a weatherproof-in-use cover is required for 15 or 20 AMP receptacles installed outdoors.



**WEATHERPROOF-IN-USE**  
**EXTRA-DUTY**



Bug Plugs ship installed in all IN BOX styles to seal unused cord hole openings.



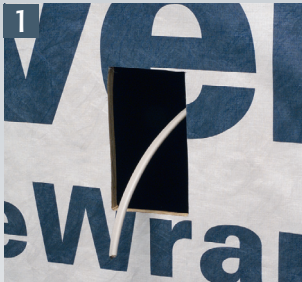
### In Box for new siding includes...

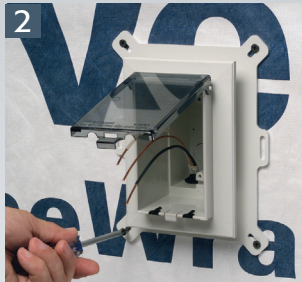
Box with weatherproof-in-use extra-duty cover; installed bug plugs; (1) standard duplex and (1) standard GFCI face plate; installation screws; and (1) NM cable connector.


Scan For Video





### INSTALLATION INSTRUCTIONS


- 

Cut a 3-1/4" x 5-1/2" hole in substrate. Pull wiring.
- 

Install NM cable connector and wire, attach IN BOX to substrate.
- 

Install siding, inserting the cut ends of the siding under the outer flange of the IN BOX.
- 

Install wiring device per manufacturer's instructions, Local and National Electrical Codes.
- 

Accepts most single gang wiring devices and uses a standard indoor wall plate.
- 

Completed installation with weatherproof-in-use cover. DBVS1C shown.