

Low Profile IN BOX™ for Retrofit Siding Construction

Recessed electrical box with weatherproof-in-use extra-duty cover for existing siding construction. Non-metallic cover and base. Accepts most single gang wiring devices and uses standard indoor wall plates or a GFCI cover plate. Box and white cover are textured/paintable. UV rated plastic for long outdoor life.

FEATURES AND BENEFITS

- IN BOX's one-piece assembly replaces the installation of an electrical box, siding block, and bubble cover assembly
- Installs in the wall, so less of it shows outside
- Install option: Cover is removable for easier device installation
- No gaskets required

CATALOG NUMBER	UPC/DCI/NAED MFG #018997	ORIENTATION/COVER COLOR	SIDING LAP SIZE	UNIT PKG	STD PKG	DIM A	DIM B	DIM C	DIM D	DIM E
DBHR131C	77612	Horizontal/Clear	1/4" or 5/16"	1	4	4.937	7.188	5.160	1.567	3.539
DBHR131W	77614	Horizontal/White	1/4" or 5/16"	1	4	4.937	7.188	5.160	1.567	3.539
DBHR141C	77616	Horizontal/Clear	1/2"	1	4	4.937	7.188	5.160	1.567	3.539
DBHR141W	77618	Horizontal/White	1/2"	1	4	4.937	7.188	5.160	1.567	3.539
DBHR151C	77620	Horizontal/Clear	5/8"	1	4	4.937	7.188	5.160	1.567	3.539
DBHR151W	77622	Horizontal/White	5/8"	1	4	4.937	7.188	5.160	1.567	3.539
DBHR171C	77624	Horizontal/Clear	Dutch	1	4	4.937	7.188	5.160	1.567	3.539
DBHR171W	77626	Horizontal/White	Dutch	1	4	4.937	7.188	5.160	1.567	3.539



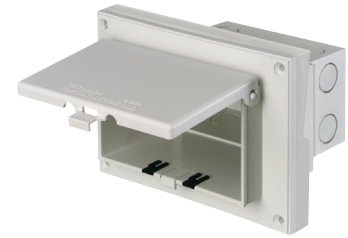
Note: Meets 2015 CEC (Rule 26-702), NEMA 3R, 2017 NEC 406.9 (b); Where a weatherproof-in-use cover is required for 15 or 20 AMP receptacles installed outdoors. Add suffix "GC" to Catalog # when ordering in Canada, for example DBHR131CGC.

Replacement covers available on page K-17.

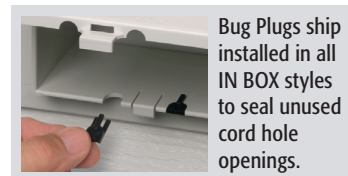
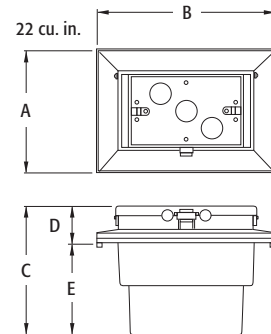
PATENTED. ADDITIONAL PATENTS PENDING.

WEATHERPROOF-IN-USE

EXTRA-DUTY

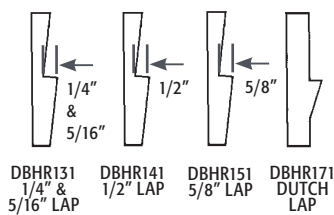


DBHR131W



Bug Plugs ship installed in all IN BOX styles to seal unused cord hole openings.

Siding Profiles



IN BOX for retrofit siding includes...

Box with weatherproof-in-use extra-duty cover, installed bug plugs, siding profile adapter plate, (1) standard duplex and (1) standard GFCI face plate, (2) sets installation screws, (1) NM cable connector, and (2) rolls of caulk.

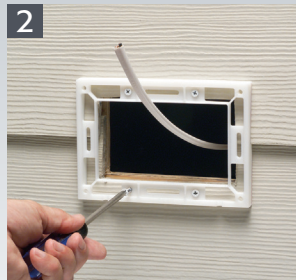
Scan For Video



INSTALLATION INSTRUCTIONS for Existing Siding



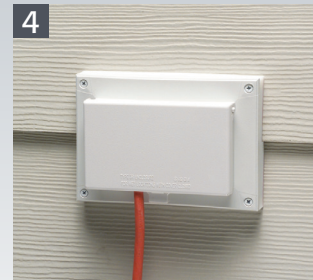
Using the siding profile adapter plate as a template, cut hole in existing siding. Pull wiring.



Apply caulk around edges of back of adapter (see page J-14, step 2a). Press onto siding. Attach adapter to siding with provided short screws. Trim excess caulk as needed.



Apply caulk to reverse side of IN BOX flange (see page J-14, step 3a). Install NM cable connector and wire, then attach with provided long screws. Trim excess caulk as needed.



Install wiring device per manufacturer's instructions, Local and National Electrical Codes. Completed installation with weatherproof-in-use cover. DBHR131W shown.