



Model RVW10

ASME HOT WATER SAFETY RELIEF VALVE

(10100 Series)

Job Name:	Contractor:
Job Location:	P.O. Number:
Engineer:	Representative:
Tag:	Wholesale Distributor:

DESCRIPTION

ASME Section IV capacity certified bronze safety relief valves for protection of hot water heating boilers, systems and similar equipment.

FEATURES

- ASME Section IV Certified Capacity (20-60psi only)
- 15-60 psig (1.4 – 4.1 bar) Set Pressure @ 250°F (121°C) max
- Corrosion Resistant Construction
- Male or Female NPT inlet
- Optional Satin or Polished Chrome Finish
- MADE IN THE USA

MATERIALS

Body: ASTM B584 Bronze
 Nozzle: ASTM B584 Bronze
 Spring: Stainless Steel
 Seat: EPDM

CAPACITY

National Board Capacity Certified

Set Pressure PSIG (bar)	10-100 (1" Outlet) BTU/Hr
20 (1.38)	545,000
25 (1.72)	625,000
30 (2.07)	710,000
35 (2.41)	790,000
40 (2.76)	870,000
45 (3.10)	955,000
50 (3.45)	1,035,000
55 (3.79)	1,115,000
60 (4.14)	1,200,000

APPROVALS



ASME Section IV Heating Boilers
 Canadian Registration Number 0G8547.5C



OPTIONS

CONNECTION

- Male NPT Inlet FNPT Inlet

FINISH

- Brass finish
 Polished chrome finish
 Satin chrome finish

SEAT

- EPDM Silicone

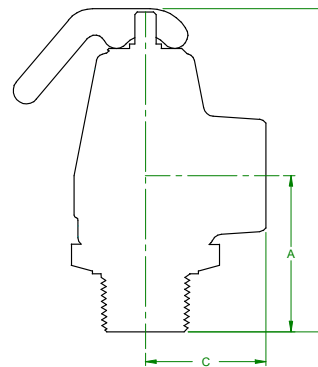
SET PRESSURE

(15-60, psig)

DIMENSIONS

Model No.	Item No.	SIZE	A	B	C
RVW10F	10102	3/4F x 1F	1.50 (38)	3.41 (87)	1.53 (39)
RVW10	10104	3/4M x 1F	1.91 (49)	3.82 (97)	1.53 (39)

All dims in inches (mm)



Conbraco Industries, Inc. 701 Matthews Mint Hill Rd. Matthews NC 28105 USA ; www.Apollovalves.com ; 704-841-6000

This specification is provided for reference only. Conbraco reserves the right to change any portion of this specification without notice and without incurring obligation to make such changes to Conbraco products previously or subsequently sold.