

**CLINIC SERVICE SINK**

- Vitreous china
- Wall-hung
- Blow-out flushing rim with 1-1/2" top inlet
- White only

❑ **9512.999.020** Wall Service sink

**Available Components:**

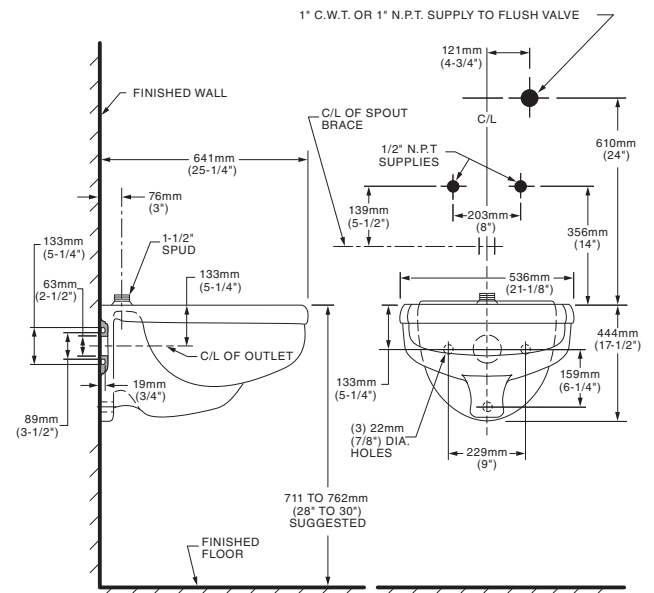
❑ **7832512.075** Rim Guard, Service Sink, Wall

**Nominal Dimensions:**

641 x 537mm  
(25-1/4" x 21-1/8")

**NOTES:**

- ❑ Fixture conforms to ANSI/ASME A112.19.2M standards
- ❑ Optional one, two or three rim guards available when specified and ordered accordingly (not shown)
- ❑ For efficient operation of the sink, a minimum flowing water pressure of 25 PSI is required at the valve.
- ❑ Valve specifications: Flush valve with vacuum breaker, 1" angle screwdriver stop and flush connection.  
Suggested (6.5 gpf/24.6 lpf) flush valves include:
  - ❑ Sloan "Royal" #117
  - ❑ Delany "Flushboy" #F418
  - ❑ Zurn "Aquaflush" #Z-6017XL-H



**NOTES:**

- \* VARIABLE-CHECK WITH MANUFACTURER OF FLUSHVALVE FOR PROPER ROUGHING-IN DIMENSIONS.
- \*\* VARIABLE-CHECK WITH MANUFACTURER OF SERVICE SINK FAUCET FOR PROPER ROUGHING-IN DIMENSIONS.
- \*\*\* MUST BE MAINTAINED FOR PROPER ROUGH-IN OF THE CHAIR CARRIER. (CARRIER SUPPLIED BY OTHERS).

**IMPORTANT:** Roughing-in dimensions may vary 1/2" and are subject to change or cancellation without prior notice. No responsibility is assumed for use of superseded or voided leaflets.

Available in White Only