

NEO CORNER SHOWER BASE

Product Features:

- Acrylic with fiberglass reinforcement
- Corner neo-angle unit
- Textured bottom pattern
- Integral two-sided, double tiling edge with water retention flange
- Molded-in flood guard
- PVC shower drain with stainless steel drain plate

4242.NEO CORNER SHOWER BASE

Nominal Dimensions:

1073 x 1070 x 168mm
(42-1/4" x 42-1/8" x 6-5/8")

3838.NEO CORNER SHOWER BASE

Nominal Dimensions:

968 x 967 x 168mm
(38-1/8" x 38-1/16" x 6-5/8")

3636.NEO CORNER SHOWER BASE

Nominal Dimensions:

921 x 918 x 168mm
(36-1/4" x 36-1/8" x 6-5/8")

Compliance Certifications -

Meets or Exceeds the Following Specifications:

- ANSI Z124.2 for Plastic Showers
- ASTM E162 for Surface Flammability
- NFPA 258 for Smoke Density



SEE REVERSE SIDE FOR ROUGHING-IN DIMENSIONS
AND PRODUCT SPECIFICATIONS

To Be Specified - Required:

- Color: (specify American Standard fixture color)

To Be Specified - Optional:

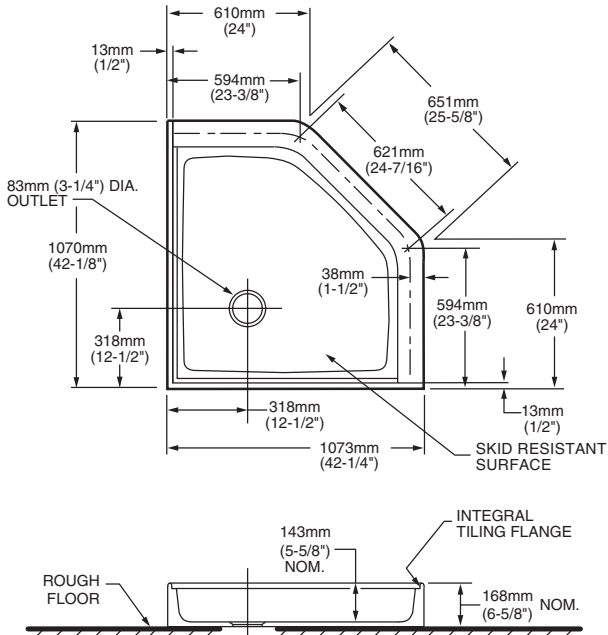
- Metal Drain Plate:
 - 751819-099 in Polished Brass
 - or
 - 751819-295 in Satin Nickel

NOTES:

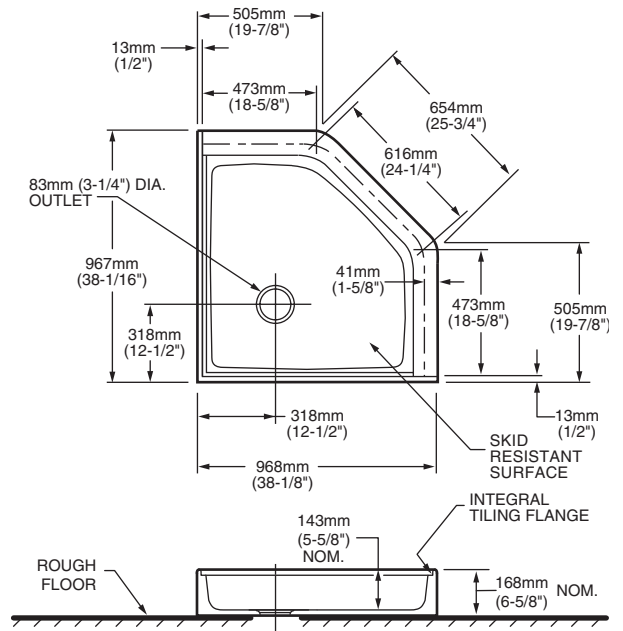
REFER TO INSTALLATION INSTRUCTIONS SUPPLIED WITH SHOWER
BASE FOR ADDITIONAL INFORMATION.

IMPORTANT: Dimensions of fixtures are nominal and may vary within the range of tolerances established by ANSI Standard Z124.1 / CSA. These measurements are subject to change or cancellation. No responsibility is assumed for use of superseded or voided pages.

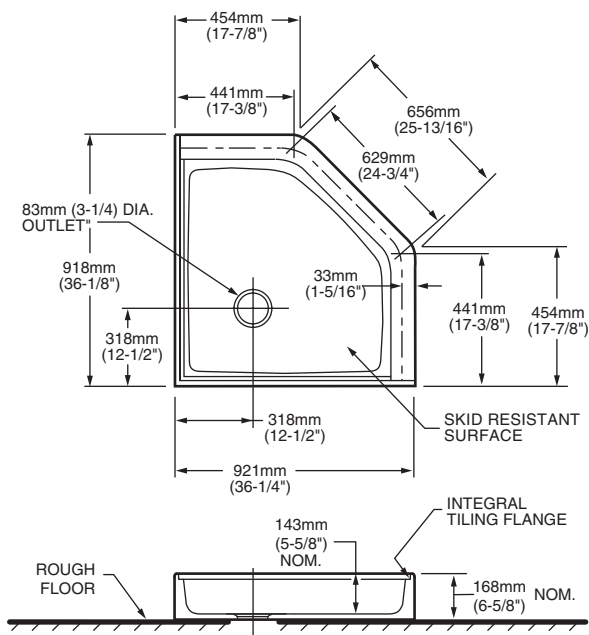
4242.NEO



3838.NEO



3636.NEO



GENERAL SPECIFICATIONS FOR 4242.NEO SHOWER BASE	
INSTALLED SIZE	1073mm X 1070mm X 168mm (42-1/4 X 42-1/8 X 6-5/8 IN.)
WEIGHT	31 Kg. (68 LBS.)
WEIGHT w/WATER	129 Kg. (285 LBS.)
SHOWER WELL AT SUMP	826mm X 826mm (32-1/2 X 32-1/2 IN.)
SHOWER WELL AT RIM	914mm X 914mm (36 X 36 IN.)
FLOOR LOADING (PROJECTED AREA)	124 Kgs/Sq. m. (25 LBS./SQ. FT.)

GENERAL SPECIFICATIONS FOR 3838.NEO SHOWER BASE	
INSTALLED SIZE	968mm X 967mm X 168mm (38-1/8 X 38-1/16 X 6-5/8 IN.)
WEIGHT	25 Kg. (54 LBS.)
WEIGHT w/WATER	74 Kg. (162 LBS.)
SHOWER WELL AT SUMP	762mm X 762mm (30 X 30 IN.)
SHOWER WELL AT RIM	826mm X 826mm (32-1/2 X 32-1/2 IN.)
FLOOR LOADING (PROJECTED AREA)	89 Kgs/Sq. m. (18 LBS./SQ. FT.)

GENERAL SPECIFICATIONS FOR 3636.NEO SHOWER BASE	
INSTALLED SIZE	921 x 918 x 168mm (36-1/4" x 36-1/8" x 6-5/8")
WEIGHT	30 Kg. (66 LBS.)
WEIGHT w/WATER	70 Kg. (156 LBS.)
SHOWER WELL AT SUMP	727mm X 727mm (28-5/8 X 28-5/8 IN.)
SHOWER WELL AT RIM	787mm X 787mm (31 X 31 IN.)
FLOOR LOADING (PROJECTED AREA)	83 Kgs/Sq. m. (17 LBS./SQ. FT.)