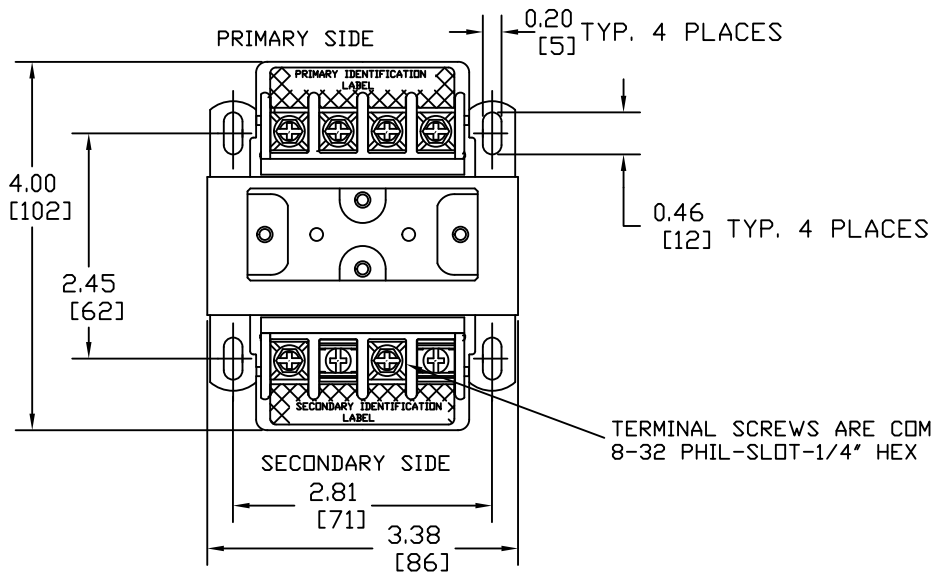
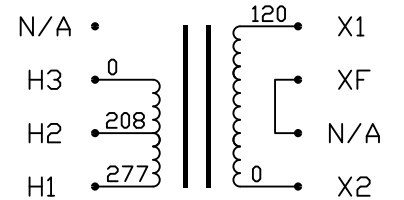


8 | 7 | 6 | 5 | 4 | 3 | 2 | 1

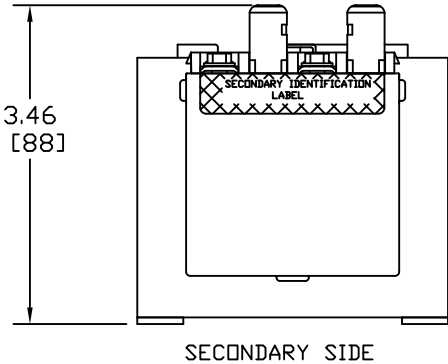


Transformer Specifications	
PRIMARY VOLTAGE(S)	208/277
SECONDARY VOLTAGE(S)	120
RATED V.A.	100
RATED FREQUENCY	50/60
INSULATION CLASS	105
AGENCY APPROVALS	UL, CUL
ESTIMATED WEIGHT	4.5 LBS



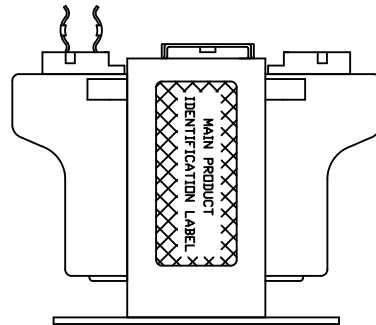
TERMINAL SCREWS ARE COMBINATION
8-32 PHIL-SLOT-1/4" HEX WITH SEMS WASHER

INTERNALLY JUMPERED TO FUSE TERMINAL
CONNECTION DIAGRAM



SECONDARY SIDE

PRIMARY SIDE



- NOTE:
1. TORQUE CONNECTIONS TO 16 LB-IN.
 2. FUSE CLIPS TO ACCOMADATE 13/32-1 1/2".
 3. ALL MEASURMENTS IN INCHES(MM).

REV	ECD	DESCRIPTION	BY	ENG	DATE

	NAME	DATE
DRAWN	A.P	11-11-11
CHECKED	A.P	11-11-11
ENG APPR.	A.P	11-11-11



TITLE: **ICT**

PROPRIETARY AND CONFIDENTIAL
THE INFORMATION CONTAINED IN THIS
DRAWING IS THE SOLE PROPERTY OF
ACME ELECTRIC. ANY
REPRODUCTION IN PART OR AS A WHOLE
WITHOUT THE WRITTEN PERMISSION OF
ACME ELECTRIC IS
PROHIBITED.

DO NOT SCALE DRAWING

SCALE: 1:1
SHEET 1 OF 1

SIZE	BVG. NO.	REV
B	TB100A006C	A

8 | 7 | 6 | 5 | 4 | 3 | 2 | 1