



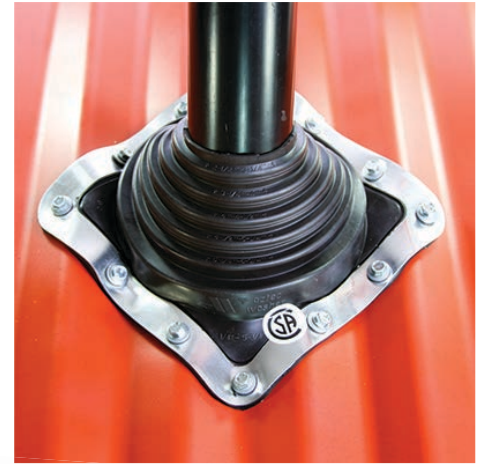
Standard Master Flash®

		EPDM 70 hour @ 500 pphm	RED & GREY HIGH TEMP SILICONE 70 hour @ 500 pphm
Advanced Ozone Resistance tested to...			
High Temperature Resistance Tested to	Intermittent	+135°C (+275°F)	+260°C (+500°F)
	Continuous	+100°C (+212°F)	+225°C (+437°F)
Low Temperature Resistance tested to...		- 55°C (-67°F)	- 74°C (-101°F)
Compression Set Maximum...		25%	50%

*Complete specification data and testing methods are available upon request.

Master Flash®

flexible design meets all roofing needs. Sleeve flexibility accommodates vibration and pipe movement caused by expansion contraction. The soft aluminum base easily conforms to most metal roof profiles.



Ozone and UV Protection

Made of EPDM or High Temp Red Silicone, these flashings are compounded specifically for maximum resistance to weathering due to ozone and ultraviolet light.

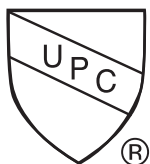
Flexibility

Sleeve flexibility absorbs vibration and pipe movement caused by expansion/contraction. Easy on-site customization can accommodate all normal installations.



Adaptable Base

The base is designed to form a seal on most panel configurations and roof pitches regardless of pipe location.



Master Flash® was used to create a new engineering standard for profiled roofing by the International Association of Plumbing and Mechanical Officials (for the Uniform Plumbing Code) and remains the only product listed. These products are also listed for use with Type B vents. The addition of fire retarding agents milled directly into the rubber compound created a self extinguishing feature which enables it to be used with type "B" vents. Listed with IAPMO certification No. 3121



BROWN



BLACK



GREY



WHITE



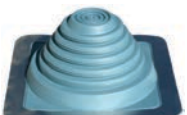
DARK GREEN



LIGHT GREEN



DARK BLUE



LIGHT BLUE



BRIGHT RED



TERRA COTTA

	Pipe Size	Compound	Part No.		Flashing Details	
Mini	1/8" - 3/4" (3 mm - 19mm)	Black EPDM	SQ051BA		A-Top opening	Closed
		Grey EPDM	SQ051GA		B-Cut to suit pipe size	1/8" - 3/4" (3-19mm)
		Red Silicone	SQ051RA		C-Base	2 - 1/4" (57mm)
#1	1/4" - 2-3/4" (6 - 70mm)	Black EPDM	SQ101BA		A-Top opening	Closed
		Grey EPDM	SQ101GA		B-Cut to suit pipe size	1/4" - 2-3/4" (6 - 70mm)
		Red Silicone	SQ101RA		C-Base	4-1/2" (114mm)
#2	7/8" - 4" (22 - 101mm)	Black EPDM	SQ201BA		A-Top opening	7/8" (22mm)
		Grey EPDM	SQ201GA		B-Cut to suit pipe size	7/8" - 4" (22 - 101mm)
		Red Silicone	SQ201RA		C-Base	6" (152mm)
#3	1/4" - 5-3/4" (6 - 146mm)	Black EPDM	SQ301BA		A-Top opening	Closed
		Grey EPDM	SQ301GA		B-Cut to suit pipe size	1/4" - 5-3/4" (6 - 146mm)
		Red Silicone	SQ301RA		C-Base	8" (203mm)
#4	2-3/4" - 7" (70 - 177mm)	Black EPDM	SQ401BA		A-Top opening	2-1/4" (57mm)
		Grey EPDM	SQ401GA		B-Cut to suit pipe size	2-3/4" - 7" (70 - 177mm)
		Red Silicone	SQ401RA		C-Base	10" (254mm)
#5	4" - 8-1/4" (101 - 209mm)	Black EPDM	SQ501BA		A-Top opening	3-1/2 (89mm)
		Grey EPDM	SQ501GA		B-Cut to suit pipe size	4" - 8-1/4" (101 - 209mm)
		Red Silicone	SQ501RA		C-Base	11" (279mm)
#6	4-3/4" - 10" (121 - 254mm)	Black EPDM	SQ601BA		A-Top opening	3-3/4" (95mm)
		Grey EPDM	SQ601GA		B-Cut to suit pipe size	4-3/4" - 10" (121 - 254mm)
		Red Silicone	SQ601RA		C-Base	12" (304mm)
#7	5-1/2" - 11-1/2" (140 - 292mm)	Black EPDM	SQ701BA		A-Top opening	4-3/4" (120mm)
		Grey EPDM	SQ701GA		B-Cut to suit pipe size	5-1/2" - 11-1/2" (140 - 292mm)
		Red Silicone	SQ701RA		C-Base	14" (355mm)
#8	6-3/4" - 13-1/2" (171 - 343mm)	Black EPDM	SQ801BA		A-Top opening	5-1/2" (140mm)
		Grey EPDM	SQ801GA		B-Cut to suit pipe size	6-3/4" - 13-1/2" (171 - 343mm)
		Red Silicone	SQ802RA		C-Base	17" (431mm)
#8X FIX A FLASH	Closed Top 0" - 15" (0-381mm)	Black EPDM	FF851BC		A-Top opening	Closed
		Grey EPDM	FF851GC		B-Cut to suit pipe size	Closed 0" - 15" (0-381mm)
		Red Silicone	FF852RC		C-Base	19-1/2" (495mm)
#9	9-1/2" - 20-1/2" (241 - 520mm)	Black EPDM	SQ901BA		A-Top opening	8" (203mm)
		Grey EPDM	SQ901GA		B-Cut to suit pipe size	9-1/2" - 20-1/2" (241 - 520mm)
		Red Silicone	SQ902RA		C-Base	25" (635mm)
#9X	8" - 20-1/2" (203 - 520mm)	Black EPDM	SQ901BX		A-Top opening	6" (152mm)
					B-Cut to suit pipe size	8" - 20-1/2" (203 - 520mm)
					C-Base	25" (635mm)
Maxi Closed	0" - 28-1/2" (0 - 724mm)	Black EPDM	SQ951BA-C		A-Top opening	Closed
		Grey EPDM	SQ951GA-C		B-Cut to suit pipe size	0" - 28-1/2" (0 - 724mm)
		Red Silicone	SQ952RA-C		C-Base	34" (863mm)
Maxi Open	12" - 28-1/2" (304 - 724mm)	Black EPDM	SQ951BA		A-Top opening	10-1/4" (260mm)
		Grey EPDM	SQ951GA		B-Cut to suit pipe size	12" - 28-1/2" (304 - 724mm)
		Red Silicone	SQ952RA		C-Base	34" (863mm)