



UNDER CABINET

LED under cabinet lighting provides elegant, efficient and affordable illumination that adds both dimension and visual interest inside and outside the home

UNDER CABINET

AmerTac offers a newly refreshed line of state-of-the-art, energy efficient, LED Under Cabinet Lighting that encompasses a wide range of features, benefits and sizes for virtually any type of installation. These lights represent the best of today's LED technology, reliability and energy efficiency. Our newest offerings are divided into three series: Professional, DIY and Designer.

The Professional Series is a convertible line of lights that allow the consumer to choose their preferred installation method; either plug-in or hardwire. With dimmable LEDs, you can easily wire these lights to a dimmer switch, giving you more control of the brightness level without any bothersome humming or flickering. Made of durable aluminum, these lights were designed and manufactured according to tough builder-grade specifications, combining durability with a professional, built-in look.

The Do-It-Yourself or DIY series is designed with the consumer in mind. These lights give effortless and expert results with a simple plug-in installation. The range of size and feature offerings make these an ideal choice for those looking to add affordable and reliable under cabinet lighting without compromising style. These lights are also equipped with dimmable LEDs for installing with a dimmer switch.

Finally, the Designer Series features today's best technology in a sleek and modern design. With ultra-thin casings, low level voltage and WaveOn technology, these lights are a great addition anywhere — hidden or seen. Small mini and micro USB cables allow for seamless plug-in installation and the ability to conceal them behind walls or thin cabinet lips. WaveOn technology gives you control with a simple wave of the hand, turning the light on, dim, and off, while also remembering the dim setting for every time you turn the light back on.



According to the US Department of Energy, today's LED bulbs can be 6-7 times more energy efficient than conventional incandescent lights. They emit light in a specific direction, reducing the need for reflectors and diffusers that can trap light, cutting energy use by more than 80%.



What are Lumens?

Lumens simply refer to the brightness of the LEDs. Although it is a common misconception that wattage is directly related to the brightness, watts only measure energy use - not light output. This is important to know when replacing a light to be sure it gives enough illumination for your space.

**Due to continuous technological improvements, item specifications may vary slightly from what is pictured or published. Please contact your AmerTac representative for more information.*

LED



DIY Series

MARGO UNDER CABINET LIGHT

- Low-profile design
 - Plug-in application
 - Linkable
 - Simple On/Off switch operation
 - Dimmable (by external fixtures)
 - Frosted diffuser
 - Warm white (3000K) light
 - Includes mounting hardware, 5' power cord and 12" linking cord
- 12 Inch: MRGO-L12W-N1 - 402 lumens
16 Inch: MRGO-L16W-N1 - 612 lumens
22 Inch: MRGO-L22W-N1 - 776 lumens



DIY Series

SENA UNDER CABINET LIGHT

- Traditional finish
 - Plug-in application
 - Simple On/Off switch operation
 - Dimmable (by external fixtures)
 - Frosted diffuser
 - Warm white (3000K) light
 - Includes mounting hardware and 5' power cord
- 12 Inch: SENA-L12W-N1 - 719 lumens
18 Inch: SENA-L18W-N1 - 1056 lumens
24 Inch: SENA-L24W-N1 - 1453 lumens



DIY Series

KBLD UNDER CABINET LIGHTS

- Plug-in application
 - In-line On/Off switch
 - Linkable with included connectors
 - Frosted diffuser
 - Warm white (3000K) light
 - Includes mounting hardware, 5' power cord and 12" linking cords
- Black, 3 Pack: KBLD-L3B-N1 - 710 lumens
Black, 5 Pack: KBLD-L5B-N1 - 1190 lumens
White, 3 Pack: KBLD-L3W-N1 - 710 lumens
White, 5 Pack: KBLD-L5W-N1 - 1190 lumens



DIY Series

ZIO UNDER CABINET LIGHT

- Plug-in application
 - Simple On/Off switch operation
 - Dimmable (by external fixtures)
 - Frosted diffuser
 - Warm white (3000K) light
 - Includes mounting hardware, 5' power cord and 12" linking cord
- 15 Inch: ZIO-L15W-N1 - 420 lumens



Professional Series KERN UNDER CABINET LIGHTS

AmerTac's new Kern Professional Series lights can be directly wired to your house's power or plugged in with the included cords if a wall outlet is more convenient. The slotted holes allow for easy and seamless mounting directly through the housing and the included linking cords and end-to-end connector allow you to link the lights for longer stretches of cabinetry.

- Contractor desired, aluminum profile
- Convertible hardwire or plug-in application
- Linkable with included connectors
- On/Dim/Off switch operation
- Frosted diffuser
- Warm white (3000K) light
- Includes mounting hardware, 5' power cord, 12" linking cord and end-to-end connector
- 12 Inch: KERN-L12W-N1 - 212 lumens
- 16 Inch: KERN-L16W-N1 - 351 lumens
- 22 Inch: KERN-L22W-N1 - 707 lumens
- 30 Inch: KERN-L30W-N1 - 884 lumens



DIY Series CITRO STRIP LIGHT

- Slim 3/4" profile
- Plug-in application
- Linkable
- In-line On/Off switch
- Dimmable (by external fixtures)
- Frosted diffuser
- Warm white (3000K) light
- Includes mounting hardware, 5' power cord and 8" linking cord
- 12 Inch: CTRO-L12W-N1 - 255 lumens
- 16 Inch: CTRO-L16W-N1 - 293 lumens
- 22 Inch: CTRO-L22W-N1 - 418 lumens



LED ULTRA THIN STRIP

- Ultra thin 1/4" profile
- Plug-in application
- In-line On/Off switch
- Link by snapping lights together or with included connecting cords
- Linkable up to 6 strips
- 184 lumens
- Warm white (3000K) light
- Includes 6' power cord and mounting hardware

1 Pack: USL11HBCC
2 Pack: USL30HBCC



18" BASIC LED BAR

- Thin 1/2" profile
- Plug-in application
- Simple On/Off switch operation
- 309 lumens
- Warm white (3000K) light
- Movable brackets for easy installation
- Includes 6' power cord and mounting hardware

Silver: LED418KBCC





Designer Series SELTA DUAL UNDER CABINET LIGHT

AmerTac's new LED SELTA Series lights feature dual lights that activate with a simply wave of the hand. The WaveOn Technology switches and dims the light from a warm white task light on the bottom of the bar to a bright white back light on the side of the bar to direct light upward and/or downward.

- Ultra-thin 3/8" profile
 - Plug-in application
 - Linkable up to 27" or 54"
 - WaveOn technology turns light On/Dim/Off
 - Smart controller remembers dimming levels
 - Bright white (4000K) task light and warm white (3000K) ambient back-light
 - Includes mounting hardware, 5' power cord and 20" linking cord
- 9 Inch, 2 Pack: SLTA-L09S-N2 - 360/240 lumens
18 Inch, 1 Pack: SLTA-L18S-N1 - 720/480 lumens



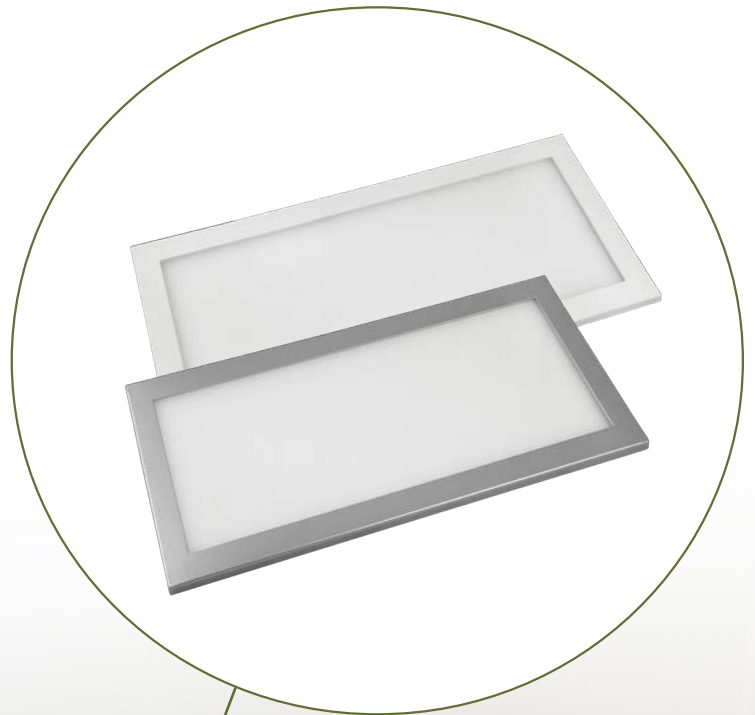


Designer Series TAVO DESIGNER PANEL LIGHTS

AmerTac's new LED TAVO Series lights feature an ultra-slim, modern design, allowing the latest LED technology to be installed in the most discrete locations. WaveOn Technology turns the panel on and off with a wave of the hand or dims the brightness by holding your hand under the controller.

- Ultra-thin 1/4" profile
- Plug-in application
- Linkable up to 27" or 54"
- WaveOn technology turns light On/Dim/Off
- Smart controller remembers dimming levels
- Warm white (3000K) light
- Includes mounting hardware, 5' power cord and 20" linking cord

White, 9 Inch, 2 Pack: TAVO-L09W-N2 - 250 lumens
White, 18 Inch, 1 Pack: TAVO-L18W-N1 - 550 lumens
Silver, 9 Inch, 2 Pack: TAVO-L09S-N2 - 250 lumens
Silver, 18 Inch, 1 Pack: TAVO-L18S-N1 - 550 lumens



LED



COLOR CHANGING 6' TAPE LIGHT W/ REMOTE

- Plug-in application
 - Remote with 16 color settings
 - Dimmable
 - 4 effects: flash, strobe, fade, and smooth
 - Can be cut at predetermined spots for custom installation
 - In-line connector included to run tape light around corners
 - Includes plug-in power adapter with 5' power cord
- Model: LTAPE6CCHBCC



WHITE 6' TAPE LIGHT

- Plug-in application
 - Can be cut at predetermined spots for custom installation
 - In-line connector included to run tape light around corners
 - Includes plug-in power adapter with 5' power cord
- Model: LTAPE6HBCC



LED ROPE LIGHT KIT

- Plug-in application
 - Transparent
 - Linkable up to 300 feet
 - Flexible, heavy duty PVC tubing
 - Includes 6' power cord and mounting hardware
- 6 Foot: RWLED6BCC
12 Foot: RWLED12BCC
24 Foot: RWLED24BCC
48 Foot: RWLED48BCC



INCANDESCENT



WHITE ROPE LIGHT KIT

- Plug-in application
 - Transparent
 - Linkable up to 300 feet
 - Flexible, heavy duty PVC tubing
 - Includes 6' power cord and mounting hardware
- 6 Foot: RW6BCC
12 Foot: RW12BCC
24 Foot: RW24BCC
48 Foot: RW48BCC



FLUORESCENT



18" FLUORESCENT LIGHT

- Plug-in application
 - Simple On/Off switch operation
 - Frosted diffuser
 - Replaceable 15W, F15 T8 bulb
 - Integrated 5' Power Cord
 - Warm white (2700K) light
 - Includes mounting hardware
- White: FA356HBWCC



21" FLUORESCENT LIGHT

- Plug-in application
 - Simple On/Off switch operation
 - Frosted diffuser
 - Replaceable 15W, F15 T8 bulb
 - Integrated 5' Power Cord
 - Warm white (2700K) light
 - Includes mounting hardware
- White: FA350HBWCC



BULBS



8W FLUORESCENT BULB

- T8 bulb type
- 3000K warm white light
- 8W, 10.5 Inch: FA100WBC - 465 lumens
- 16W, 17 Inch: FA200WBC - 860 lumens



HALOGEN REPLACEMENT BULBS

- 120V
- JCDGY8 type
- G4 base
- 20W, 2 Pack: ALV00XB
- 25W: LB25B
- 35W: UC200XB



XENON REPLACEMENT BULBS

- 20W
- Type 3
- G4 base
- 12V, 1-Pack: XC300XW
- 12V, 2-Pack: XP02XB
- 120V, 2 Pack: XLV00XB

INDEX

Model #	Page #
ALV00XB	5
CTRO-L12W-N1	3
CTRO-L16W-N1	3
CTRO-L22W-N1	3
FA100WBC	5
FA200WBC	5
FA350HBWCC	5
FA356HBWCC	5
KBLD-L3B-N1	2
KBLD-L3W-N1	2
KBLD-L5B-N1	2
KBLD-L5W-N1	2
KERN-L12W-N1	3
KERN-L16W-N1	3
KERN-L22W-N1	3
KERN-L30W-N1	3
LB25B	5

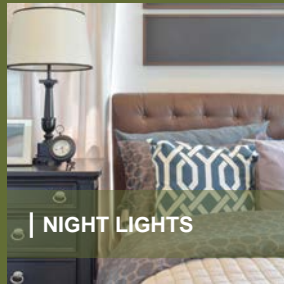
Model #	Page #
LED418KBCC	4
LTAPE6CCHBCC	4
LTAPE6HBCC	4
MRGO-L12W-N1	3
MRGO-L16W-N1	3
MRGO-L22W-N1	3
RW12BCC	4
RW24BCC	4
RW48BCC	4
RW6BCC	4
RWLED12BCC	4
RWLED24BCC	4
RWLED48BCC	4
RWLED6BCC	4
SENA-L12W-N1	3
SENA-L18W-N1	3
SENA-L24W-N1	3

Model #	Page #
SLTA-L09S-N2	2
SLTA-L18S-N1	2
TAVO-L09S-N2	3
TAVO-L09W-N2	3
TAVO-L18S-N1	3
TAVO-L18W-N1	3
UC200XB	5
USL11HBCC	4
USL30HBCC	4
XC300XW	5
XP02XB	5
ZIO-L15W-N1	2

SEE OUR OTHER CATEGORIES



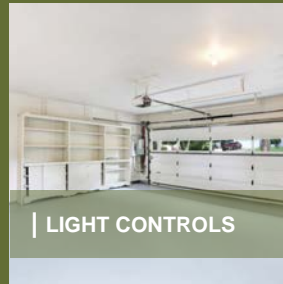
| WALLPLATES



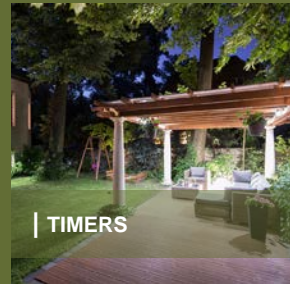
| NIGHT LIGHTS



| BATTERY OPERATED



| LIGHT CONTROLS



| TIMERS



250 Boulder Drive
Breinigsville, PA 18031
610-336-1330
www.amertac.com