



Holiday Highlights





Traditional LED Battery Window Candles - Amber Flame

- * No hot wax or dangerous flame
- * LED light source – eliminates need for bulb replacement
- * Automatically comes on at dusk and turns off at dawn

Standard

- Lasts the entire holiday season using 2 AA alkaline batteries (not included)
- Choose from realistic flickering or full on flame



FPC1221A



FPC1215B



FPC1215A



FPC1215P



FPC1205A

Economy

- Realistic flickering flame
- Fits easily on windowsill without the hassle of unsightly cords
- Safe to operate – no heat generated
- Indoor use only



FPC1221B



FPC1221P

Deluxe

- Patented design optimized for use in windows
- Lasts the entire holiday season using 2 "C" alkaline batteries (not included)
- Choose from realistic flickering or full on flame



FPC1225P



FPC1225



FPC1225ABZ

Candelabra

- Patented design optimized for use in windows
- Lasts the entire holiday season using 3 "D" alkaline batteries (not included)
- Choose from realistic flickering or full on flame



FPC1230



FPC1230P



FPC1230ABZ



Contemporary LED Battery Window Candles - Warm White Flame

New Improved Flame Flicker

- * Illuminates with a beautiful warm white color
- * No hot wax or dangerous flame
- * LED light source – eliminates need for bulb replacement
- * Automatically comes on at dusk and turns off at dawn



Standard

- Lasts the entire holiday season using 3 AA alkaline batteries (not included)
- Realistic flickering flame



Candelabra

- Patented design optimized for use in windows
- Lasts the entire holiday season using 3 "D" alkaline batteries (not included)
- Choose from realistic flickering or full on flame



Deluxe

- Patented design optimized for use in windows
- Lasts the entire holiday season using 2 "C" alkaline batteries (not included)
- Choose from realistic flickering or full on flame



Taper Battery Candles



- * No hot wax or dangerous flame
- * LED light source – eliminates need for bulb replacement
- * Realistic flickering amber flame
- * Built-in timer – candle will automatically come on the same time every day if left turned on and remain on for six hours before turning off and coming on the next day
- * Manual on/off – turn candle while holding onto base
- * Flexible base works with a wide variety of candleholders



New Improved Flame Flicker

Formal 12"

- Uses 3 "AA" alkaline batteries (not included)
- Operates for up to 420 hours or 70 days if left turned on (six hours per day)



Classic 9"

- Uses 2 "AA" alkaline batteries (not included)
- Operates for up to 360 hours or 60 days if left turned on (six hours per day)



Two Pack 12" Candle Kit

Includes two ivory candles, two suction cups and two polished brass finish candleholders





Battery Votive Candles

- ✦ No hot wax or dangerous flame
- ✦ LED light source – eliminates need for bulb replacement
- ✦ Built-in timer – candle will automatically come on the same time every day if left turned on and remain on for six hours before turning off and coming on the next day
- ✦ Uses 2 "AA" alkaline batteries (not included)
- ✦ Can be used with or without decorative holder or jar, in another holder or by themselves



FPC1410
Decorative
holder included

Flickering

- Realistic flickering amber flame
- Operates for up to 360 hours or 60 days if left turned on (six hours per day)



FPC1415
Frosted glass
holder included



Two Pack 9" Candle Kit

Includes two ivory candles, two suction cups and two polished brass finish candleholders



FPC1452



Weatherproof Battery Pillar Candles

New Improved Flame Flicker

- ✦ Can be used indoors or outdoors
- ✦ Amber LED - eliminates need for bulb replacement
- ✦ Choose from realistic flickering or full on flame
- ✦ Built-in timer – candle will automatically come on the same time every day if left turned on and remain on for six hours before turning off and coming on the next day
- ✦ Uses 2 "D" alkaline batteries (not included)
- ✦ 4", 5" and 6" pillars operate for up to 12 months if left turned on (six hours per day)



4" Pillar



FPC1484

5" Pillar



FPC1485

6" Pillar



FPC1486

Candle Set



FPC1487

- Set of three - one, 4", 5" and 6" candle
- Display together or individually





Warm White Pillar Candles

4" Pillar



FPC1584

5" Pillar



FPC1585

6" Pillar



FPC1586

- Weatherproof - use indoors or outdoors
- Operate for up to 3 months if left turned on (six hours per day)
- Realistic flame color and innovative flicker appears to move
- Uses 2 "D" alkaline batteries (not included)



3 Wick Pillar Candle

- Operates for up to 4 months if left turned on (six hours per day)
- Random flickering simulates real candle flames
- Amber LED -eliminates need for bulb replacement
- Uses 2 "D" alkaline batteries (not included)



FPC1493



Christmas Tree Lights On/Off Touch Control

*Touch the ornament to turn
Christmas tree lights on and off*



- * Eliminates crawling under tree to plug in lights
- * Works with incandescent or LED light strings
- * Plugs into standard 120 volt outlet
- * Controls up to 1200 miniature Christmas tree lights (600 watts max)
- * Listed by UL for US and Canadian applications, for indoor use only



Plug-In Candle Night Lights

- * LED light source – eliminates need for bulb replacement
- * Energy efficient – uses only \$.30 a year based on \$.08 per KWHK, 1/20 the energy use of traditional incandescent night lights
- * Cool to the touch – generates little heat
- * Maintenance free operation for over 11 years
- * Listed by UL for US and Canadian applications, for indoor use only





Electric LED Window Candle



- ✧ *Plug-in, no batteries*
- ✧ *LED light source – eliminates need for bulb replacement*
- ✧ *Flickers like a real flame or full on*
- ✧ *Automatically comes on at dusk and turns off at dawn*
- ✧ *Safe and easy to operate – no heat generated and no glass bulb to break*
- ✧ *Saves energy – uses 90% less power than incandescent window candles*
- ✧ *Listed by UL for US applications, for indoor use only*



Rotating

- *The night light's rotating base enables it to be used in a horizontal or vertical receptacle*





AFFINITY

Real Wax LED Candles

- ✦ Patent pending LED flame design recreates the movement of a real flame
- ✦ Illuminates with a beautiful warm white color
- ✦ 6 hour repeating timer
- ✦ High and low brightness settings
- ✦ Battery life up to 3 months
- ✦ Real wax candle shell
- ✦ 3.75" Diameter
- ✦ Uses 2 "D" alkaline batteries (not included)



4" Pillar



WC1684

6" Pillar



WC1686

5" Pillar



WC1685





6" Pillar



WC1686R

5" Pillar



WC1685R

4" Pillar



WC1684R

*Featuring
our
innovative
Dynamic
LED Flame
Technology*



**REAL WAX
DYNAMIC LED FLAME TECHNOLOGY**



Illuminated Outdoor Ornaments



Battery Operated Weatherproof LED Lights

- ✧ *Decorative outdoor ornament automatically turns on at dusk and off after 8 hours*
- ✧ *5" Globes pulse randomly to provide a unique firefly like light show when multiple globes are used*
- ✧ *Eliminates wires, plugs, or tapping into existing light strings*
- ✧ *LED Light Source – Never needs to be replaced*
- ✧ *Patented "Low Glow Technology" extends battery life up to 60 days, to last the entire Holiday Season*
- ✧ *Decorative design is weatherproof for outdoor use*
- ✧ *Perfect for hanging in trees or under eaves*
- ✧ *Uses 3 AA alkaline batteries (not included)*



Metallic Finish Ornaments

- *Electroplated Illuminated Outdoor Ornament*



WP540E



WP550E



WP500



WP510



WP560



WP580



WP600



WP660

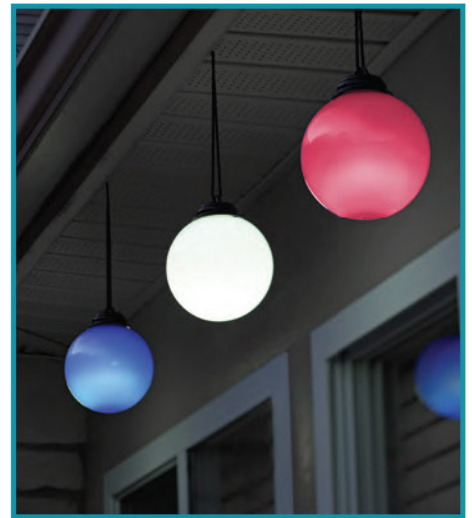


WP680

*Attractive LED
Ornaments*

Illuminated Outdoor Patio Globes

Battery operated Globes illuminate at dusk and randomly pulse while lasting the entire summer season



WP400

WP410

WP415

WP420

WP430

WP465

WP480

WP485

- Decorative outdoor globes automatically turn on at dusk and off after 4 hours
- LED Light Source – Never needs to be replaced
- Patented "Low Glow Technology" extends battery life up to 4 months
- Decorative design is weatherproof for outdoor use
- Perfect for hanging in trees, under eaves, awnings or umbrellas



Motion Deck Light

Deck Marker Light

- Runs dusk to dawn to mark steps or walkway locations and provide long lasting accent lighting indoors or out

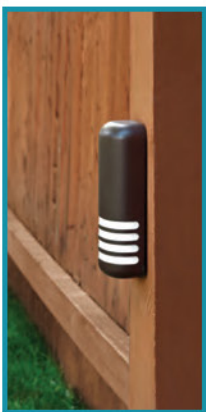
- Provides accent lighting at night and floods the deck surface with light when motion is detected



BL705



BL775

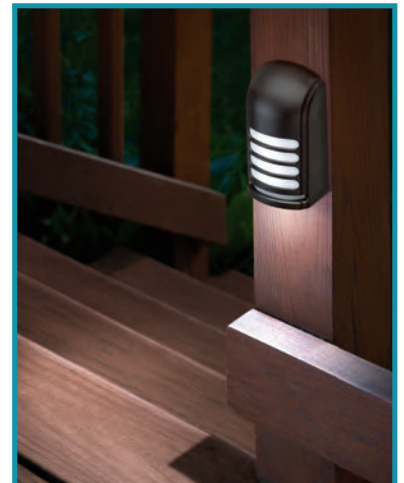


BL600



BL670

- * Contemporary weatherproof design
- * Light Sensor automatically turns light on at dark and off at dawn
- * LED Light Source never needs to be replaced





Lighting Control Products

Motion Light Adapter

- ❖ Converts existing light fixtures into Motion Security Lights
- ❖ Works with LED Bulbs



HS3110D

- HS3100D – Grey motion adaptor
- HS3110D – White motion adaptor



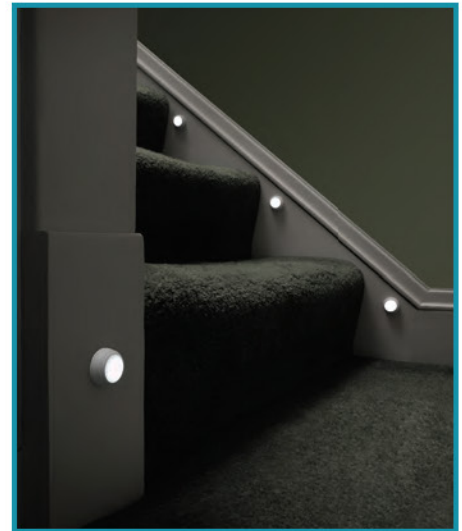
- XP150D – Photo Control w/adjustable light shield
- HS250D – PAR lamp control UL listed for up mounting
- HS300D – Photo Control with ratcheting base
- XL150D – Manual Rotary Dimmer control for lamps

Mini Guide Light

- Turns on at dark and marks the way to stairs, hallways, light switches, and bathrooms



BL404



HW2165



HW2175



XP150D



HS300D



HS250D



XL150D



Wireless Wall Switch

- Easy to install – Switch mounts anywhere with no wiring
- 2 Long life CR2032 lithium batteries included
- 4 channel selection to prevent interference or build a compatible system
- Works with LED bulbs
- HW2165 – Wireless Pull Chain Socket Switch
- HW2175 – Wireless Switched Outlet



Merchandising



LED Lite Solutions Inc.
6045 Creditview Road Suite 190
Mississauga, Ontario L5V0B1
Tel: 905-265-8586
Email: sales@ledlitesolutionsinc.com
Website: www.ledlitesolutionsinc.com