

WARNER®

**2020
Decorating & Maintenance
Tool Catalog**

Warner Vision: We call it the Warner Way. We're SMARTER, STRONGER AND BETTER at making tools and giving our customers the support they need to be successful.

Smarter: We listen to our customers and consumers to develop tools that fit their needs to ensure they will be successful in the market place. Ultimately for us, the proof that we are smarter at our business is in the design of our tools, their durability and their ease of use.

Stronger: We enjoy pushing our innovations from good to great. Even in areas where we have the strongest products, we keep generating ways to make them better. Our company began in 1927, and our staying power is a testament to our strength. Our tools are made tough and strong by people who are tough and strong.

Better: Our goal is to give our customers the best customer service the industry has to offer and to give consumers the best information they need to complete their projects. We live by the creed be honest, trustworthy and loyal. This represents the Warner Way of dealing with our customers.

History: Harry H. Warner who founded Warner Tool Products in 1927 used to say the only thing you have that is worth anything is your name. To keep your name, you've got to provide customers value and put every customer first. The Warner family still runs the company this way, four generations later. If it's got our name on it, it works.

Innovation:

Warner's innovation has demonstrated that Warner is the leader in the Paint Tool Category, and the commitment to continue developing industry leading products.



Items shaded in Blue denote Made in the USA

Are you interested in items made in the USA? We are very proud to offer items made in America.

Please note the items with blue shading are made in the USA!

<u>Putty Knives and Scrapers</u>		<u>Spray Shields & Paint Accessories</u>	
PROGRIP®	4-7	Spray Shields—Aluminum, Plastic & Cardboard	19
PROGRIP® Stainless Steel	7	Brush Extension	19
American Pride Series	7	Miscellaneous Paint Accessories	19
Mexican Heritage Series	7	Wood Paint Paddle	19
Wood Series Carbon Steel	8	Paint and Trim Guides	20
Wood Series Stainless Steel	9	Pry Bars	20
12-in-1 Folding Knife	9	Bucket Openers	20
15-in-1 Painter's Tool	9	Mixers	20
DIY Series	10	Strainer Bag Squeegee and Pail Scoop	20
Painter's Series	11	Plastic Buckets	21
Plastic Series	10	Paint Grid & Roller Trays	21
Perfect Pass™ Joint Knife	11	Brush and Roller Cleaners	21
Miscellaneous Knives and Scrapers	10	3-in-1 Paint Tote & Liners	21
<u>Paint Scrapers</u>		Grunt® and Can-Do Grip 1-Gallon Paint Can Carriers	21
Carbide 100X® Scrapers	12	Wire Brushes—Soft Grip & Wood Handle	22
Carbide 100X® Scrapers—Softgrip Handle	12	<u>Stilts and Benches</u>	
Carbide 100X® Replacement Blades	12	Strap-N-Stride™ Aluminum Stilts and Rplcmt Parts	23
2-Edge Steel Blade Paint Scrapers	13	EZ-Stride® Step-Up Benches and Rplcmt Parts	24
4-Edge Steel Paint Scrapers	13	EZ-Stride® Drywall Bench and Rplcmt Parts	25
2- and 4-Edge Replacement Blades	13	<u>Taping Knives</u>	
Blade Sharpening File	13	PROGRIP® - Blue Steel & Stainless Steel	26
Specialty Scrapers and Replacement Blades	14	Aluminum Backing Plate—Poly Handle, Blue Steel & SS	26
Plastic Refinishing Tool	14	Bucket Scoop	26
Dual Blade Paint Scraper	14	Perfect Pass™ Joint Knife	27
Heavy-Duty Scrapers—Carbon Steel and Stainless Steel	14	Molded Backing Plate—Plastic Handle	27
Threaded Scrapers—Carbon Steel and Stainless Steel	14	Plastic Series Taping Knives	27
Strip 'N' Clean™ Scrapers and Replacement Blades	15	Corner and Curved Trowels	27
Big Blade Scrapers & Replacement Blades	15	<u>Drywall Tools & Tile Tools</u>	
<u>Glass & Razor Scrapers, and Single Edge Blades</u>		Mud Pans, Grip & Go™ Mud Pan	27
Premium Safety 1st™ Scrapers	16	Hand Sanders	28
Razor Scrapers	16	Sanding Blocks	28
Single Edge Razor Blades	16	Pole Sanders	28
Utility Blades	16	Drywall Saw	28
<u>Snap-Off Knives & Blades</u>		Hawkbill Knives	28
Snap-Off Blade Knives	17	Rubber Float & Grout Spreader	29
Snap-off Replacement Blades	17	Applicator Brushes	29
<u>Utility Knives & Utility Blades</u>		No Pock!™	29
Utility Knives	17	Adhesive Spreaders	29
<u>Extension Poles</u>		<u>Wallcovering Tools</u>	
Steel Poles	18	Smoothers, Brushes	30
<u>Hopper Gun</u>		Wallcovering Kit	30
Hopper Gun	18	Seam Rollers	31
<u>Pliers, Screwdriver & Tape Measure</u>		Razor Knives	31
Pliers, Screwdriver & Tape Measure	18	Wallpaper Steamer	31
<u>Paint Test Set, Sheets & Panels</u>		Wallcovering Tool Accessories	31
Paint Test Set, Sheets & Panels	18	<u>Assortments and Displays</u>	
		Bucket Tree	32
		Bucket Displays	32
		Countertop Displays	33
		DIY Display	33
		Plastic Series Display	33
		Painter's Series Display	34-35
		PROGRIP® Assortments	34-35
		Rosewood Display	34-35
		Wire Brush Display	34-35
		<u>Bull Dog Power Products® Lighting</u>	36-45
		<u>Index</u>	46-47

Read and follow any safety related information in or on the product and packaging

PROGRIP®

Patented Color-Coding Handle Technology*

Customizable Inserts

The PROGRIP® line uses a patented color-coded handle system to identify blade flexibility: Stiff, Flex, Full Flex. Matched color-coded icons on the labels demonstrate usages. This at-a-glance identification helps customers select the right tools for their needs and makes for easier, faster sales for you. The PROGRIP line features:

- Ergonomic, color-coded soft grip handles
- Polypropylene with a TPE (Thermoplastic Elastomer) overmold
- Two soft-grip handle styles
- Two cap styles
- Color coded blade flex on handle
- Three blade-flexibility options
- High-quality carbon steel blades
- Full tang
- Plated Zinc Hammer Cap™ on select models
- Dura Cap™ on select models
- Chisel-edge on stiff knives
- Large hang-hole size
- **Made in U.S.A.**

FOR SCRAPING AND REMOVAL



STIFF

Item #	Description	Type of Packaging	Pack Weight	Pack Qty
90101	1-1/4" Stiff Chisel Putty Knife, .080"	Labeled	3	5
90107	1-1/4" Stiff Putty Knife	Labeled	2	5
90109	1-1/2" Stiff Putty Knife	Labeled	2	5
90111	2" Stiff Putty Knife	Labeled	2	5



STIFF

Item #	Description	Type of Packaging	Pack Weight	Pack Qty
90115	3" Stiff Scraper	Labeled	4	5
90175	3" Stiff Scraper, with Hammer Cap™	Labeled	3	5
90119	4" Stiff Broad Knife	Labeled	2	5



Items shaded in Blue denote Made in the USA

Red Handle = Stiff

Heavy-duty blades provide maximum strength and have a chisel ground edge. For fine scraping and shaving with less gouging or chipping. Standard blades are .050" thick and heavy-duty blades are .080" thick. Ergonomic handles have a ribbed finger grip for better pushing control.



STIFF

Item #	Description	Type of Packaging	Pack Weight	Pack Qty
90189	5-in-1 Painter's Tool, .080" Scraper, Roller Cleaner, Spreader, Crack Cleaner, & Can Opener	Labeled	3	5
90199	6-in-1 Painter's Tool, Hammer Cap™, .080", Scraper, Roller Cleaner, Spreader, Crack Cleaner, Can Opener, & Nail Setter	Labeled	3	5
90173	8-in-1 Painter's Tool, Hammer Cap™, .060", Scraper, Roller Cleaner, Spreader, Crack Cleaner, Can Opener, Nail Setter, Nail Puller, & Utility Knife	Labeled	2	5
10830	7-in-1 Spray Wrench, .080"	Labeled	3	10



STIFF— COUNTERTOP DISPLAYS

Item #	Description	Type of Packaging	Pack Weight	Pack Qty
10173	8-in-1 Painter's Tool, 10/Counter Display, #90173	Boxed	4	10
10199	6-in-1 Painter's Tool, 10/Counter Display, #90199	Boxed	4	10
10889	7-in-1 Spray Wrench, 10/Counter Display, #10830	Boxed	7	10
10971	5-in-1 Painter's Tool, 10/Counter Disp American Craftsman, Red, White, Blue	Boxed	3	10
11102	8-in-1 Painter's Tool, Black Blade, 10/Counter Display	Boxed	4	10

* US Patent Numbers **6,668,751 & 9,610,679**. Additional patents pending. The patent color-coding identification technology is unique to Warner PROGRIP® and Warner Tool Products.

PROGRIP®

Blue Handle = Flex

Standard carbon steel blades are hollow ground to provide consistent flex and proper stiffness for spreading heavy drywall compound. Ideal for first-coat applications. Ergonomic handles are designed to fit the hand more comfortably, for use as a spreading tool and to reduce fatigue. Some models available with Hammer Cap™. Angled blades reach into corners, help keep hands away from wall.



FOR SPREADING
AND APPLYING



FLEX

Item #	Description	Type of Packaging	Pack Weight	Pack Qty
90106	1-1/4" Flex Putty Knife	Labeled	2	5
90108	1-1/2" Flex Putty Knife	Labeled	2	5
10351	Painter's Knife, 1-1/2"	Labeled	2	5
90110	2" Flex Putty Knife	Labeled	2	5
90114	3" Flex Putty Knife	Labeled	3	5



FLEX

Item #	Description	Type of Packaging	Pack Weight	Pack Qty
90118	4" Flex Broad Knife	Labeled	2	5
90124	4" Flex Broad Knife, Hammer Cap™	Labeled	2	5
90120	5" Flex Broad Knife	Labeled	2	5
90125	5" Flex Broad Knife, Hammer Cap™	Labeled	2	5
90122	6" Flex Broad Knife	Labeled	2	5
90126	6" Flex Broad Knife, Hammer Cap™	Labeled	2	5

Items shaded in Blue denote Made in the USA



	STIFF	FLEX	FULL FLEX
1 1/4"	+90100 90101 90107	90106	90131
1 1/2"	90109 90661	90108 90660 10351	90127
2"	90111	90110	90128
3"	90115 90175 90662	90114 90663	90133
4"	90119 90667	90118 90124 90664	90135
5"		90120 90125 90665	90136
6"		90122 90126 90666	90137
5-in-1	90189		
6-in-1	90199 10199		
8-in-1	90173 10173		
15-in-1	10309 10495		
Painter's Wrench	90200 10793		
	For Scraping and Removal	For Spreading and Applying	Applying Lightweight Spackling

Use 1-1/4"-2"

Knives to apply spackle, putty and for detail work in smaller areas.

Use 3"

Knives for patching, touch-up and heavy-duty scraping.

Use 4" - 6"

Knives for taping drywall joints and large surface scraping

Use a **multi-purpose** tool to scrape, clean and glaze.

PROGRIP®

Yellow Handle = Full Flex

Full Flex applies to blades that have been hollow-ground thinner for maximum flexibility. They are designed for lighter compounds. Perfect choice for final or finish-coat applications. Ergonomic handle is wider and flatter, designed to fit the hand for use as a spreading tool and to reduce fatigue. Design improves blade control.

Customizable Inserts

FOR APPLYING
LIGHTWEIGHT
SPACKLING



FULL FLEX

Item #	Description	Type of Packaging	Pack Weight	Pack Qty
90131	1-1/4" Full Flex Putty Knife	Labeled	2	5
90127	1-1/2" Full Flex Putty Knife	Labeled	2	5
90128	2" Full Flex Putty Knife	Labeled	2	5
90133	3" Full Flex Putty Knife	Labeled	2	5



FULL FLEX

Item #	Description	Type of Packaging	Pack Weight	Pack Qty
90135	4" Full Flex Broad Knife	Labeled	2	5
90137	6" Full Flex Broad Knife	Labeled	2	5



Items shaded in Blue denote Made in the USA

PROGRIP®

Stainless Steel Blades

Same great PROGRIP® features and color-coded handle system with high-quality stainless steel blades. Available in Stiff and Flex blades. All have a Hammer Cap™ and eye-catching silver label for retail appeal.



STIFF—STAINLESS—HAMMER CAP™

Item #	Description	Type of Packaging	Pack Weight	Pack Qty
90661	1-1/2" Stainless Steel Stiff Putty Knife, Hammer Cap™	Labeled	2	5
90662	3" Stainless Steel Stiff Scraper, Hammer Cap™	Labeled	2	5
90667	4" Stainless Steel Stiff Broad Knife, Hammer Cap™	Labeled	3	5



FLEX—STAINLESS—HAMMER CAP™

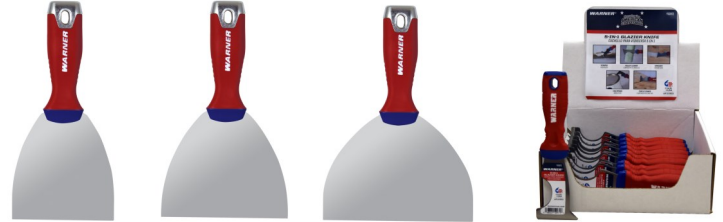
Item #	Description	Type of Packaging	Pack Weight	Pack Qty
90660	1-1/2" Stainless Steel Flex Putty Knife, Hammer Cap™	Labeled	2	5
90663	3" Stainless Steel Flex Putty Knife, Hammer Cap™	Labeled	2	5
90664	4" Stainless Steel Flex Putty Knife, Hammer Cap™	Labeled	3	5
90665	5" Stainless Steel Flex Putty Knife, Hammer Cap™	Labeled	3	5
90666	6" Stainless Steel Flex Putty Knife, Hammer Cap™	Labeled	3	5

Items shaded in Blue denote Made in the USA



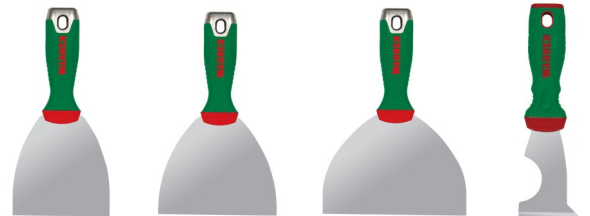
American Pride and Mexican Heritage

These flex bladed tools are made with pride to honor American and Mexican craftsmen. Standard handle features a curved handle for spreading control and a ribbed finger grip to help prevent hand slippage. Blades are hollow-ground to provide a consistent flex and proper stiffness for spreading compounds.



AMERICAN PRIDE SERIES

Item #	Description	Type of Packaging	Pack Weight	Pack Qty
40124	4" Flex Broad Knife, Hammer Cap™	Labeled	2	5
40125	5" Flex Broad Knife, Hammer Cap™	Labeled	2	5
40126	6" Flex Broad Knife, Hammer Cap™	Labeled	2	5
10971	5-in-1 Painter's Tool, 10/Counter Disp American Craftsman, Red, White, Blue	Boxed	3	10



MEXICAN HERITAGE SERIES

Item #	Description	Type of Packaging	Pack Weight	Pack Qty
10144	4" Flex Broad Knife, Hammer Cap™	Labeled	2	5
10145	5" Flex Broad Knife, Hammer Cap™	Labeled	2	5
10146	6" Flex Broad Knife, Hammer Cap™	Labeled	2	5
10189	6-in-1 Painter's Tool	Labeled	2	5



MEXICAN HERITAGE SERIES—COUNTERTOP DISP

Item #	Description	Type of Packaging	Pack Weight	Pack Qty
10848	6-in-1 Painter's Tool, 10/Counter Display, #10189	Boxed	4	10

Rosewood Series

Warner Quality— Craftsmanship You Can Trust

If you're a professional who likes the feel of wood-handled tools but wants the performance of today's technology, the choice is Warner. The Rosewood Series offers the same high-quality blades as the PROGRIP® Series, but with hardwood handles. Rosewood-colored handles are laminated and then pressure-treated with resin to be moisture-resistant. Won't swell or crack. Blades are made from .050", .060", and .080" thick carbon steel.

Rosewood Series Features:

- Laminated Hardwood Handles with Brass Rivet & Eyelets
- Blades are made of #1074 high carbon-grade steel
- Hollow-ground, heat-treated and annealed for toughness
- Blades polished and buffed to high luster finish for easier application and cleanup
- Full-tang design for maximum strength
- Brass rivets and eyelets mechanically lock handle to tang so it cannot come loose
- Chisel-edge on stiff knives

Carbon Steel Blades

Heavy-duty blades provide maximum strength and have a chisel ground edge. Use for fine scraping and shaving with less gouging or chipping.



ROSEWOOD SERIES—STIFF— CARBON STEEL

Item #	Description	Type of Packaging	Pack Weight	Pack Qty
379	5-in-1 Painter's Tool, .080", Stiff	Labeled	3	5
601	1-1/4" Chisel Ground Putty Knife, .080", Stiff	Labeled	2	5
609	1-1/2" Stiff Putty Knife	Labeled	2	5
615	3" Stiff Scraper	Labeled	2	5



10858
Rosewood Series Display
 5 of each:
 379, 609, 608, 614, 622, 604,
 627, 633, 637

Also see page 35



Items shaded in Blue denote Made in the USA

Carbon Steel Blades

Carbon steel blades of .050" and .060" thickness are hollow-ground to provide a flex with the proper stiffness to handle heavy drywall compounds. Use these tools for first-coat applications.



ROSEWOOD SERIES—FLEX—CARBON STEEL

Item #	Description	Type of Packaging	Pack Weight	Pack Qty
606	1-1/4" Flex Putty Knife	Labeled	2	5
608	1-1/2" Flex Putty Knife	Labeled	2	5
610	2" Flex Putty Knife	Labeled	2	5
614	3" Flex Putty Knife	Labeled	2	5
618	4" Flex Broad Knife	Labeled	2	5
620	5" Flex Broad Knife	Labeled	2	5
622	6" Flex Broad Knife	Labeled	2	5

Carbon Steel Blades

Full flex applies to blades that have been hollow-ground thinner for maximum flexibility. They are designed for lighter compounds. Ideal for finish or final-coat applications.



ROSEWOOD SERIES—FULL FLEX—CARBON STEEL

Item #	Description	Type of Packaging	Pack Weight	Pack Qty
604	3/4" Full Flex Putty Knife	Labeled	2	5
621	1-1/4" Full Flex Putty Knife	Labeled	2	5
627	1-1/2" Full Flex Putty Knife	Labeled	2	5
628	2" Full Flex Putty Knife	Labeled	2	5
633	3" Full Flex Putty Knife	Labeled	3	5
635	4" Full Flex Putty Knife	Labeled	2	5
636	5" Full Flex Putty Knife	Labeled	2	5
637	6" Full Flex Putty Knife	Labeled	2	5

Stainless Steel Blades

Same rosewood features with high-quality stainless steel blades. Available in Stiff and Flex blade.



ROSEWOOD SERIES—STIFF—STAINLESS STEEL

Item #	Description	Type of Packaging	Pack Weight	Pack Qty
10745	5-in-1 SS Painter's Tool, .080"	Labeled	3	5
10742	1-1/4" SS Chisel Ground Putty Knife, .080"	Labeled	2	5
10750	1-1/4" SS Stiff Putty Knife	Labeled	2	5
10747	1-1/2" SS Stiff Putty Knife	Labeled	2	5
10752	2" SS Stiff Putty Knife	Labeled	2	5
10748	3" SS Stiff Scraper	Labeled	2	5

Stainless Steel Blades

Same rosewood features with high-quality stainless steel blades. Available in Stiff and Flex blade.



ROSEWOOD SERIES—FLEX—STAINLESS STEEL

Item #	Description	Type of Packaging	Pack Weight	Pack Qty
10751	1-1/4" SS Flex Putty Knife	Labeled	2	5
10746	1-1/2" SS Flex Putty Knife	Labeled	2	5
10753	2" SS Flex Putty Knife	Labeled	2	5
10749	3" SS Flex Putty Knife	Labeled	2	5
10740	4" SS Flex Broad Knife	Labeled	2	5
10741	6" SS Flex Broad Knife	Labeled	2	5

The Painter's Blade®, 12-in-1 Folding Knife

It's another Warner innovation—performance that you carry in your pocket. This patented tool features a carbon steel blade in a secure lockback system. It has a thumb knob for one-hand easy opening and a spring-loaded lock for closing. #10801 Folding knife is extra thin, 3/8" thick, to slide into pockets easier. The textured Aluminum handle helps prevent slippage and hand fatigue. Carbon steel blade.



THE PAINTER'S BLADE® 12-in-1 FOLDING TOOL

Item #	Description	Type of Packaging	Pack Weight	Pack Qty
10801	The Painter's Blade® Folding 12-in-1	Clam	3.25	3
10847	Folding 12-in-1 Tool, 6/Counter Display, #10801	Clam in Ctr Disp	4	6

15-in-1 Painter's Tool



15-in-1 PAINTER'S TOOL

Item #	Description	Type of Packaging	Pack Weight	Pack Qty
10309	15-in-1 Painter's Tool, Hammer Cap, .080", Scraper, Spreader, Crack Cleaner, Roller Cleaner, Radius Scraper, Nail Puller, Window Putty Tool, Utility Cutter, Bottle Opener, Paint Can Opener, Nail Setter, Small & Large Phillips Head Bits, Small & Large Flat Slotted Screwdriver Bits	Labeled	2	6
10495	15-in-1 Painter's Tool, 10/Counter Display, #10309	Boxed	5	10

Items shaded in Blue denote Made in the USA



DIY Series

Rugged, hardworking line for light-duty construction or home projects. Economical tools feature blades of carbon steel for easy spreading and easy cleanup. New improved plastic polypropylene handles resist paint thinners and adhesive solvents during cleanup.



DIY SERIES—STIFF

Item #	Description	Type of Packaging	Pack Weight	Pack Qty
180	1-1/4" Stiff Putty Knife	Labeled	2	10
181	3" Stiff Scraper	Labeled	2	10
185	5-in-1 Painter's Tool	Labeled	2	10



DIY SERIES—FLEX

Item #	Description	Type of Packaging	Pack Weight	Pack Qty
182	1-1/4" Flex Putty Knife	Labeled	2	10
183	3" Flex Putty Knife	Labeled	2	10
184	4" Flex Broad Knife	Labeled	2	10
186	6" Flex Broad Knife	Labeled	2	10



DIY SERIES—FLEX

Item #	Description	Type of Packaging	Pack Weight	Pack Qty
10822	2 Pack, 1-1/4" & 3" Flex Putty Knife	Labeled	2	5
10829	3 Pack, 1-1/4", 3" & 4" Flex Putty Knives; Red, White & Blue handles	Labeled	2	10

Plastic Series

High-value, low-cost spreaders are made of tough plastic polystyrene. Made and priced to be perfect for one-time project use. Features a chisel edge to aid fine spreading or to allow light scraping on soft surfaces. Plastic tools are perfect for one-time uses such as spreading tar, adhesive, roof caulking, wood putty or other difficult to clean materials.



PLASTIC SERIES—FLEX

Item #	Description	Type of Packaging	Pack Weight	Pack Qty
902	1-1/2" Flex Plastic Putty Knife	Labeled	1	20
904	2" Flex Plastic Putty Knife	Labeled	2	20
903	3" Flex Plastic Putty Knife	Labeled	2	20
905	4" Flex Plastic Broad Knife	Labeled	2	20
901	6" Flex Plastic Broad Knife	Labeled	2	20
8150	3 Pack Plastic Putty Knives, 1 ea 2", 4" & 6"	Labeled	3	15
908	3" V-Notch Plastic Spreader, 3/16" teeth	Labeled	2	20
909	3" Square—Notch Plastic Spreader, 1/16" teeth	Labeled	2	20
11079	8" 1/8" Notched Plastic Adhesive Sp	Labeled	2	20
11080	8" Plastic Taping Knife	Labeled	2	20
11088	10" Plastic Taping Knife	Labeled	2	20

Miscellaneous Putty Knives and Scrapers

Tang-driven putty knives feature high-quality carbon steel blades and comfortable wood handles. Patcher is made of tempered steel and plated for corrosion resistance. Perfect for small areas. ProCut™ Spreader is made of 35% less material and has a high carbon steel blade.



MISCELLANEOUS PUTTY KNIVES & SCRAPERS

Item #	Description	Type of Packaging	Pack Weight	Pack Qty
10824	3" V-Notch ProCut™ Spreader, 2 pk	Labeled	2	5
465	+1-1/8" Flex Tang Driven Putty Knife	Labeled	1	10
466	+3" Stiff Tang Driven Scraper	Labeled	1	10
442	Patcher	Labeled	2	10

Items shaded in Blue denote Made in the USA



Painter's Series

Full-Tang, precision ground, mirror finish blade coated to prevent rust. Solvent resistant, durable plastic nylon handles. Carbon steel blades. Steel rivets and eyelets.
#502 is a stainless steel blade. Plated zinc hammer caps™ on some models.



PAINTER'S SERIES—CARBON STEEL

Item #	Description	Type of Packaging	Pack Weight	Pack Qty
11048	+10-N-1 Painter's Tool	Labeled	1	5
10321	5-in-1 Painter's Tool, 1.2 mm = .047" thick blade, carbon steel	Labeled	1	5
11026	+5-in-1 Painter's Tool, 1.8 mm = .071" thick blade, carbon steel	Labeled	1.38	5
11243	13-in-1 Painter's Tool	Labeled		5
502	1-1/4" Stiff Bent Putty Knife, .050", Stainless Steel	Labeled	2	5
10389	H.D. Caulk Remover, .045", carbon steel	Labeled	2	5
11090	Painter's Series Pry Bar, w/Hammer Cap™	Labeled	2	5
11220	Painter's Series Pry Bar, 10/CounterDisp	Boxed	4	10



PAINTER'S SERIES—STIFF—CARBON STEEL

Item #	Description	Type of Packaging	Pack Weight	Pack Qty
503	3/4" Stiff Chisel Ground Putty Knife	Labeled	2	5
10328	1-1/4" Stiff Chisel Putty Knife	Labeled	1	5
11022	1-1/4" Stiff Scraper, Hammer Cap™	Labeled	1	5
10327	1-1/2" Stiff Putty Knife	Labeled	1	5
10997	2" Stiff Scraper, Hammer Cap™	Labeled	1	5
10323	3" Stiff Scraper	Labeled	1	5



10337
Painter's Series Display
5 of each:
10320, 10327, 10322, 10323,
10324, 10326, 10321, 11090

Also see page 34

Perfect Pass™ Joint Knife

Revolutionary notched design makes filling drywall joints fast & easy. Tape drywall joints in 3 easy steps. Allows perfect amount of drywall compound every time. No sanding necessary. Fewer steps and less mess!
The Perfect Pass™ Joint Knife has a full-tang, precision ground, and mirror finished 6" blade. Durable plastic nylon handle with Zinc alloy, chrome plated hammer cap™.



MISCELLANEOUS PUTTY KNIVES & SCRAPERS

Item #	Description	Type of Packaging	Pack Weight	Pack Qty
10832	Perfect Pass™ Joint Knife, 6"	Carded	2	5
10846	Perfect Pass™ 10/Counter Display, #10832	Boxed	4	10

The Perfect Pass™ US Patent Number **7,647,668**.



PAINTER'S SERIES—FLEX—CARBON STEEL

Item #	Description	Type of Packaging	Pack Weight	Pack Qty
504	3/4" Full Flex Putty Knife	Labeled	2	5
10320	1-1/2" Flex Putty Knife	Labeled	1	10
10322	3" Flex Putty Knife	Labeled	1	10
10324	4" Flex Broad Knife, Hammer Cap™	Labeled	1	5
10326	6" Flex Broad Knife, Hammer Cap™	Labeled	1	5



PAINTER'S SERIES—FLEX—CARBON STEEL

Item #	Description	Type of Packaging	Pack Weight	Pack Qty
11222	8" Flex Taping Knife, Hammer Cap™	Labeled	3	5
11223	10" Flex Taping Knife, Hammer Cap™	Labeled	3	5

Items shaded in Blue denote Made in the USA



100X® Paint Scraper with Carbide Blades

Warner uses a special grade of tungsten carbide on 100X® Paint Scrapers because it is extremely hard and durable. In fact, the softest grade of tungsten carbide composite starts where steel stops.

Carbide 100X® Blades are diamond-ground to produce an edge sharper than steel! These blades will scrape paint faster and cleaner than any standard, hardened steel blade! That's the performance that has pushed 100X® paint scrapers to be on the "most wanted" list in the Warner line. Soft grip TPE handle includes a removable Phillips screw bit in the grip cap for changing blades. Standard handles are polypropylene. Both have an aluminum neck. The knobs are made of polypropylene and steel.



**SOFT
GRIP
HANDLE**

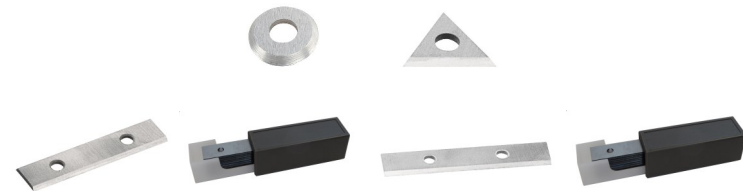


CARBIDE 100X® PAINT SCRAPERS

Item #	Description	Type of Packaging	Pack Weight	Pack Qty
808	22 MM (7/8") Triangle Carbide 100X® Scraper, w/o Knob, Uses # 828	Labeled	2	5
803	50 MM (2") Carbide 100X® Scraper, w/o Knob, Uses #'s 813, 819	Labeled	3	5
804	50 MM (2") Carbide 100X® Scraper, with Knob, Uses #'s 813, 819	Labeled	3	5
806	60 MM (2-3/8") Carbide 100X® Scraper, w/o Knob, Uses #'s 814, 816	Labeled	3	5
807	60 MM (2-3/8") Carbide 100X® Scraper, with Knob, Uses #'s 814, 816	Labeled	3	5

CARBIDE 100X® PAINT SCRAPERS-SOFT GRIP HANDLE

Item #	Description	Type of Packaging	Pack Weight	Pack Qty
10016	22 MM (7/8") Triangle Carbide 100X® Soft Grip Scraper, w/o Knob, Uses # 828	Labeled	3	5
10017	50 MM (2") Carbide 100X® Soft Grip Scraper, w/o Knob, Uses #'s 813, 819	Labeled	3	5
10018	50 MM (2") Carbide 100X® Soft Grip Scraper, with Knob, Uses #'s 813, 819	Labeled	3	5
10019	60 MM (2-3/8") Carbide 100X® Soft Grip Scraper, w/o Knob, Uses #'s 814, 816	Labeled	3	5
10020	60 MM (2-3/8") Carbide 100X® Soft Grip Scraper, with Knob, Uses #'s 814, 816	Labeled	3	5
3410020	60MM (2-3/8") Carbide Scraper, w/ Knob & Soft Grip Handle Uses #'s 814, 816	Labeled	3	5



CARBIDE 100X® REPLACEMENT BLADES

Item #	Description	Type of Packaging	Pack Weight	Pack Qty
824	+6 MM (5/8") Round Carbide 100X® Blade, Card of 1	Card	1	10
828	22 MM (7/8") Triangle Carbide 100X® Blade, Card of 1, Replaces 1" triangle blade	Card	1	10
813	50 MM (2") Double Edge Carbide 100X® Blade, Card of 1	Card	1	10
819	50 MM (2") Double Edge Carbide 100X® Blades, Contractor Pack, 10/box	Contractor Pack	2	1
814	60 MM (2-3/8") Double Edge Carbide 100X® Blade, Card of 1	Card	1	10
816	60 MM (2-3/8") Double Edge Carbide 100X® Blades, Contractor Pack, 10/box	Contractor Pack	2	1

Items shaded in Blue denote Made in the USA



Affordable Scrapers and Blades

Good quality at an economical price. Ideal for light-duty home projects and more. Rugged, comfortable-to-use scrapers have plastic Polypropylene PistolGrip™ handles that arch up for proper leverage. Blades are high-carbon steel, industrial-ground, easy to replace and can be re-sharpened as needed.

Choice of two or four scraping edges depending on blade type. Multiple scraping edges require less sharpening to help get more work done in less time. Wood handle scraper # 805 offers a 5" wide blade and a pivoting head so scraping edges can be rotated easily. Comes with two 2-edge blades, as does the #809. #'s 740, 741 & 742 are polypropylene.

2-Edge Steel Paint Scrapers & Blades



2-EDGE STEEL BLADE PAINT SCRAPERS

Item #	Description	Type of Packaging	Pack Weight	Pack Qty
742	1" Scraper, 2-Edge Blade, Uses #810	Labeled	1	5
741	2-1/2" Scraper, 2-Edge Blade, Uses # 812	Labeled	2	5
809	+2-1/2" Pivot Head Scraper, 12" Handle, Uses # 812	Labeled	6	10
805	+5" Pivot Head Scraper, 12" Handle, Uses # 103102	Labeled	3	5



2-EDGE REPLACEMENT BLADES

Item #	Description	Type of Packaging	Pack Weight	Pack Qty
810	1" 2-Edge Blade, Card of 2	Carded	1	10
811	1-3/4" 2-Edge Blades, Card of 2	Carded	1	10
812	2-1/2" 2-Edge Blades, Card of 2	Carded	1	10
103102	+5" 2-Edge Blades, Bulk 50/box	Bulk	3	50

Items shaded in Blue denote Made in the USA

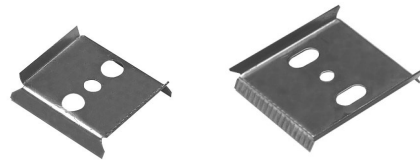


4-Edge Steel Paint Scrapers & Blades



4-EDGE PISTOLGRIP™ STEEL BLADE PAINT SCRAPERS

Item #	Description	Type of Packaging	Pack Weight	Pack Qty
731	1-3/4" PistolGrip™ Scraper, 4-Edge Blade, Uses # 711	Labeled	1	5
732	+2-1/2" PistolGrip™ Scraper, 4-Edge Blade, Uses # 712	Labeled	1	5
708	1-3/4" PistolGrip™ Scraper with Knob, 4-Edge Blade, Uses # 711	Labeled	1	5
709	2-1/2" PistolGrip™ Scraper with Knob, 4-Edge Blade, Uses # 712	Labeled	1	5
34709	2-1/2" 4-Edge Paint Scraper	Labeled	1	5



4-EDGE REPLACEMENT BLADES

Item #	Description	Type of Packaging	Pack Weight	Pack Qty
711	1-3/4" 4-Edge Blades, Card of 2	Carded	1	10
712	2-1/2" 4-Edge Blades, Card of 2	Carded	1	10

Blade Sharpening File



BLADE SHARPENING FILE

Item #	Description	Type of Packaging	Pack Weight	Pack Qty
820	Blade Sharpening File	Carded	2	10

Specialty Scrapers

Molding scrapers are designed for curved surfaces around windows and doors. High-carbon steel blades are industrial-ground for maximum sharpness.



UTILITY SCRAPER & REPLACEMENT BLADES

Item #	Description	Type of Packaging	Pack Weight	Pack Qty
10100	Utility Scraper with 3 Blades	Carded	3	5

Safe for scraping glass, tile, soft wood products and plastics w/o scratching the surface. Use to spread sticky & gooey compounds, they will not stick to the blade. Works great as a ice & snow scraper, safe for windshields.



Chemical Resistant Polypropylene
Use with stripping chemicals

Radius Scrapers

Scrape & Lift Away - Tray for transferring chemicals to waste container

Crack & Corner Scraper

3" PLASTIC REFINISHING TOOL

Item #	Description	Type of Packaging	Pack Weight	Pack Qty
393	3" Plastic Refinishing Tool	Labeled	1	10

Heavy-Duty Scrapers

Burn-off scrapers feature thick, tempered steel blades with a chisel edge. Bent blades on longer wood handles keep fingers away from hot surfaces or chemicals.



HEAVY DUTY BURN-OFF SCRAPERS

Item #	Description	Type of Packaging	Pack Weight	Pack Qty
387	Bent Burn-Off Scraper, Long Handle, .060", Carbon Steel Blade	Labeled	4	5
10743	3" SS Straight Burn-Off Scraper, 7-3/4" Wood Handle, replaces # 388	Labeled	2	5
10744	3" SS Bent Burn-Off Scraper, 4-1/2" Wood Handle	Labeled	2	5

Dual Blade Paint Scraper

This scraper has 2 blades in 1 handle. 2-1/2" wide straight blade for light duty push scraping and angled blade for heavy duty pull scraping. The heavy duty high impact plastic PistolGrip™ handle has a threaded end to attach to any pole for hard-to-reach places. No tools needed to change blade, just rotate the dial.



DUAL BLADE PAINT SCRAPER

Item #	Description	Type of Packaging	Pack Weight	Pack Qty
10833	Dual Blade Paint Scraper, 2-1/2"	Labeled	2	5

Threaded Scrapers

Threaded scrapers attach to a choice of extension poles for overhead and hard-to-reach scraping jobs. Professional painters, maintenance crews and window cleaners use Warner pole accessories to save time and do a better job. #'s 397 & 398 handles are polypropylene with a TPE overmold. #'s 10736, 10737, 10738 & 10739 handles are ABS plastic material.



THREADED SCRAPERS

Item #	Description	Type of Packaging	Pack Weight	Pack Qty
397	3" Easy Reach™ Bent Scraper, Threaded Handle, Carbon Steel Blade, .060"	Labeled	3	6
398	3" Easy Reach™ Scraper, Threaded Handle, Carbon Steel Blade, .060"	Labeled	3	6
657	6" Easy Reach™ Bent Scraper, Threaded Handle, Carbon Steel Blade, .060"	Labeled	2	6
10736	3" SS Straight Blade Pole Scraper, Threaded Handle	Labeled	3	6
10737	3" SS Bent Pole Scraper, Threaded Handle	Labeled	3	6
10738	4" SS Straight Blade Pole Scraper, Threaded Handle	Labeled	3	6
10739	4" SS Bent Pole Scraper, Threaded Handle	Labeled	3	6

Items shaded in Blue denote Made in the USA



Strip 'N' Clean Scrapers for the Biggest, Toughest Jobs

Heavy-duty scrapers are made for professionals tackling big scraping jobs—from paint to floor tile. Great for removing adhesives, ceramic wall tile, asphalt tile, carpeting and various industrial applications. Featuring heavy duty scraping heads for maximum blade rigidity and handle of steel with comfortable nonslip grips. Overall length's (head and pole) shown do not include blade.



STRIP 'N' CLEAN™ SCRAPERS

Item #	Description	Type of Packaging	Pack Weight	Pack Qty
790	4" Strip 'N' Clean™ Scraper, Steel Soft Grip Handle, 10-7/8"	Carded	5	4
791	4" Strip 'N' Clean™ Scraper, Steel Handle with Rubber Grip, 16-3/4"	Carded	8	4
792	4" Strip 'N' Clean™ Floor Scraper, Steel Handle, 48"	Carded	15	4
10419	10" Heavy Duty Floor Scraper, Steel Handle, 52-1/8" Uses #10423 Blade	Carded	9	2
BD10360	Bull Dog™ 6" Heavy Duty Floor Scraper, Steel Handle, 53-7/8" Uses #794 Blade	Carded	14	2



STRIP 'N' CLEAN™ REPLACEMENT BLADES

Item #	Description	Type of Packaging	Pack Weight	Pack Qty
793	4" Strip 'N' Clean™ Scraper, Rplcmt Blade, Blue Steel, Double Edge	Carded	2	5
794	6" Strip 'N' Clean™ Scraper, Rplcmt Blade, Blue Steel, Single Edge	Carded	3	5
795	+8" Strip 'N' Clean™ Scraper, Rplcmt Blade, Blue Steel, Single Edge	Carded	4	5
10423	10" Heavy Duty Rplcmt Blade, Ground Hardened Steel Blade, .050" For #10419	Carded	4	5

Items shaded in Blue denote Made in the USA



4", 5", and 6" Scrapers

Industrial-ground carbon steel blades and big, beefy scrapers can take on practically any scraping job. Tools are designed to deliver maximum leverage on wall and floor surfaces. Multipurpose scrapers tackle anything from wax buildup to dried adhesives. Scraper #690 is a popular tool used in a wide variety of industries. #34690 has a polypropylene with a soft TPR over-mold threaded handle. Scrapers are packaged with the blunt edge of the blade exposed for safety, reverse the blade to expose the sharp edge. Overall length's (head and pole) shown do not include blade.

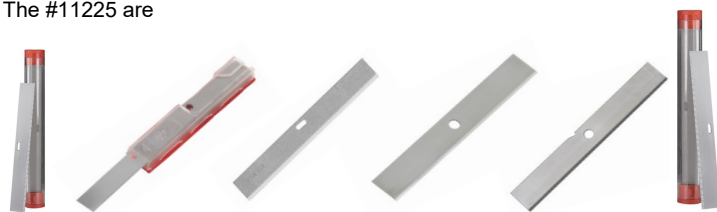


BIG BLADE SCRAP-

Item #	Description	Type of Packaging	Pack Weight	Pack Qty
34690	4" Paint and Wall Scraper, 11-3/8" Steel Handle w/ Threaded Soft Grip	Carded	6	10
691	4" Big Blade Scraper, Steel Handle, 7" Uses #'s 695, 698, 699	Carded	4	10
693	4" Big Blade Floor Scraper, Steel Handle, 50-9/16" Uses #'s 695, 698, 699	Carded	10	5
590	5" Heavy Duty Scraper, Steel Handle, 15-7/8" Uses #'s 595, 599	Carded	6	5
591	5" Heavy Duty Floor Scraper, Steel Handle, 47-1/4" Uses #'s 595, 599	Carded	10	5
11221	6" H.D. Paint & Wall Scraper, 24" Steel Handle with Threaded Soft Grip	Carded		6

Replacement Blades

The #695 & #699 are .02" x .56" x 4". The #595 & #599 are
The #11225 are



BIG BLADE

Item #	Description	Type of Packaging	Pack Weight	Pack Qty
695	4" Big Blade Scraper, Rplcmt Blades, Card of 5	Carded	1	10
698	4" Big Blade Scraper, Rplcmt Blades Dispenser, Carton of 100, 10 Dispenser of 10 Blades	Carded	2	10
699	4" Big Blade Scraper, Rplcmt Blades, 100 Bulk	Bulk	2	1
595	5" Heavy Duty Scraper, Rplcmt Blades, Card of 5	Carded	2	10
599	5" Heavy Duty Scraper, Rplcmt Blades, 50 Bulk	Bulk	2	1
11225	6" H.D. Replacement Blade, 5 Blades/ Tube, for #11221	Carded		10

Glass Scrapers

All of the Safety 1st™ scrapers in the Warner line have been designed to minimize risk with quick and convenient blade-changing features. Warner is the only company with all safety-style blade-changing systems. Use for a variety of light-duty scraping jobs, including scraping paint and decals off windows. #s 100 & 356 are made of polystyrene.



SAFETY 1ST™ SCRAPERS

Item #	Description	Type of Packaging	Pack Weight	Pack Qty
100	+3-1/2" Glass Scraper, with 1 Blade Uses #99	Carded	2	10
356	Safety 1st™ Utility Scraper, with 1 Blade, Uses #s 360	Carded	2	10
10500	Soft Grip Safety 1st™ Scraper, with 1 Single Edge Blade, Uses #s 102, 109, 129	Carded	2	10
10300	Soft Grip Safety 1st™ Scraper, with 5 Pack Tuck of Single Edge Blades, Uses #s 102, 109, 129	Carded	2	10

Razor Scrapers

Blade holders have convenient blade storage in the handle.



MINI RAZOR SCRAPERS

Item #	Description	Type of Packaging	Pack Weight	Pack Qty
114	Mini Glass Scraper/Blade Holder with 2 Blades, Carded	Carded	1	20
101	Mini Glass Scraper/Blade Holder with 2 Blades, 25/Bucket	Bagged in Bucket	2	25
102395	Mini Glass Scraper/Blade Holder with 2 Blades, Bagged, 25/Box	Bagged in Box	1	25
10908	Glass & Tile Scraper Set, Uses # 11314	Carded/ Blistered	1	10
10907	4" Glass & Tile Scraper, w/ 2 Blades, Uses # 11314	Carded/ Blistered	1	10

Single Edge Blades

Single-edge blades are made to Warner's industrial specifications of high-carbon steel, .009" & .012" thick. Blades are ground, honed and tempered for durability.



SINGLE EDGE RAZOR & GLASS SCRAPER BLADES

Item #	Description	Type of Packaging	Pack Weight	Pack Qty
129	+10 Single Edge Razor Blades in Dispenser, .009", For #s 101, 114, 429, 490, 10300, 10500	Carded	2	10
109	Single Edge Razor Blades, .009", 100/Tub, Steel Back, 10 Tubs/ Counter Display, For #s 101, 114, 429, 490, 10300, 10500	Tub or Clamshell	1	10
102	Bucket of Blades, 5 Pack Tuck, Bucket of 50 Tucks, .009", For #s 101, 114, 429, 490, 10300, 10500	Tucks in Bucket	5	50
11163	50 Pack Single Edge Razor Blades in Safety Dispenser, 50 Blades/Dispenser, 6 Dispensers/Box	Dispenser		6
11314	4" Glass & Tile Replacement Blades, For #s 10907 & 10908	Carded		10



All utility blades are carbon steel

UTILITY BLADES

Item #	Description	Type of Packaging	Pack Weight	Pack Qty
360	H.D. Utility Blades, .025", Card of 5, (2 Notches & Ctr Hole) For #s 352, 366, 566, 1052, 11181,11185,11187	Carded	1	10
10807	Utility Blades, .025", 50 in Plastic Dispenser, (2 Notches) For #s 352, 366, 566, 1052, 11181,11185,11187	Carded	7	12
10808	Utility Blades, .025", 100 in Plastic Dispenser, (2 Notches) For #s 352, 366, 566, 1052, 11181,11185,11187	Carded	12	12
10809	+Utility Hook Blade, .024", Card of 5 For #s 352, 366, 566, 1052, 11181,11185,11187	Carded	1	10
11049	100 H.D. Utility Blades, .025", 20 individual 5 packs, (2 Notches) For #s 352, 366, 566, 1052, 11181,11185,11187	Boxed	1	1 ctn

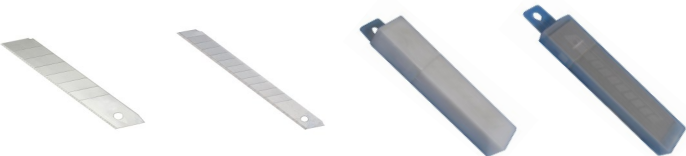
Snap-Off Blade Knives

Snap-off blade knives with multiple cutting edges and locking thumb advance mechanism for a fresh sharp blade. Just snap-off the old blade to expose a fresh, sharp edge. Replacement blades are carbon steel.



SNAP-OFF BLADE KNIVES

Item #	Description	Type of Packaging	Pack Weight	Pack Qty
117	13 Point 9MM Ergo Snap-Off Blade Knife with 1 Blade, Uses #'s 116 & 10806	Carded	2	10
119	8 Point 18MM Ergo Snap-Off Blade Knife with 3 Blades, Uses #'s 120 & 10805	Carded	3	10
10841	13 Point 9MM Auto-Retract Knife Snap-Off Blade Knife with 1 Blade, Uses #'s 116 & 10806	Carded	3	10
10798	8 Point 18MM Economy Snap-Off Blade Knife with 1 Blade, Uses #'s 120 & 10805	Bagged in Bucket	2	25
102380	8 Point 18MM Economy Snap-Off Blade Knife with 1 Blade, Uses #'s 120 & 10805	Bagged in Box	2	25
10799	13 Point 9MM Economy Snap-Off Blade Knife with 1 Blade, Uses #'s 116 & 10806	Bagged In Bucket	2	50
102381	13 Point 9MM Economy Snap-Off Blade Knife with 1 Blade, Uses #'s 116 & 10806	Bagged in Box	2	50



SNAP-OFF BLADE KNIFE BLADES

Item #	Description	Type of Packaging	Pack Weight	Pack Qty
120	8 Point 18MM Snap-Off Rplcmt Blades, Card of 5	Carded	1	10
116	13 Point 9MM Snap-Off Rplcmt Blades, Card of 5	Carded	1	10
10805	8 Point 18MM Snap-Off Blades, 50 in a Plastic Tube on Blister Card	Carded	4	6
10806	13 Point 9MM Snap-Off Blades, 50 in a Plastic Tube on Blister Card	Carded	2	6

Utility Knives

Utility knives feature heavy-duty, die-cast zinc, aluminum or plastic housings with ground and honed high-carbon steel blades. Top trigger release designs allow blade to be retracted for safety. The fixed blade version securely clamps the blade in a cutting position. The folding utility knife folds for safety and convenience. Pivot blade open with one hand using thumb pin. To change blade, push button and pull blade forward. Unique to the line is the ProCut® Rasp 'N' Knife, which features a zinc body die cast to double as a drywall rasp. A special safety feature of the #566 safety utility knife is a spring-loaded, self-retracting blade. Pressing the trigger exposes the blade, and the blade retracts when the trigger is released.



UTILITY KNIVES

Item #	Description	Type of Packaging	Pack Weight	Pack Qty
366	Top Trigger Utility Knife, with 3 Blades Uses #'s 360, 10807, 10808, 10809, 11049	Carded	4	10
352	ProCut® Rasp 'N' Knife®, Fixed Blade, with 3 Blades Uses #'s 360, 10807, 10808, 10809, 11049	Carded	4	10
566	Safety 1st™ Self-Retracting Utility Knife, with 1 Blade Uses #'s 360, 10807, 10808, 10809, 11049	Carded	4	10
1052	ProCut® Rasp 'N' Knife® Bucket Display, 10/Bucket #352 Uses #'s 360, 10807, 10808, 10809, 11049	Carded in Bucket	4	10
11181	Auto Lock & Auto Retractable Utility Knife, w/1 Blade Uses #'s 360, 10807, 10808, 10809, 11049	Carded		12
11185	Folding & Locking Zinc Utility Knife, w/1 Blade, 10/Counter Disp Uses #'s 360, 10807, 10808, 10809, 11049	Carded		10
11187	Folding & Locking Plastic Utility Knife, w/6 Blades, 10/Counter Disp Uses #'s 360, 10807, 10808, 10809, 11049	Carded		10

Items shaded in Blue denote Made in the USA



Extension Poles

Handy extension poles #'s 145 & 262 are made of tough steel tubing and are an excellent value. End-Cap adapter is nylon and fits standard 3/4" thread accessories. Twist lock secures adjustable poles at any point out to full extension. #10836 is Aluminum.

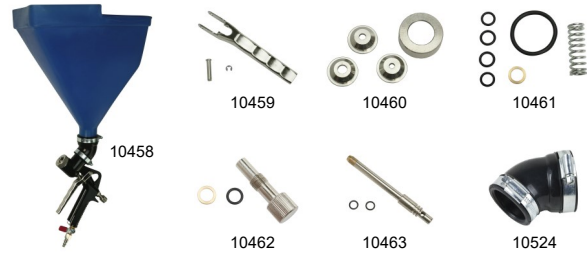


STEEL POLES

Item #	Description	Type of Packaging	Pack Weight	Pack Qty
262	Steel Extension Pole 4' - 6.5', Male Treaded, Twist Lock (48"-78")	Labeled	12	10

Hopper Gun

Ideal for spraying walls and ceilings, the hopper gun includes three nozzles, air shutoff valve, and 1/4" quick disconnect. Made of lightweight aluminum with 1-3/4" gallon capacity, internal brass components, and comfortable, full-length grip trigger. Angled boot for ceiling spraying. Tips sizes included: 3/16", 1/4", 5/16".



HOPPER GUN

Item #	Description	Type of Packaging	Pack Weight	Pack Qty
10458	Hopper Gun	Boxed	1	1
10459	Replacement Handle, Pin & Clip	Bagged	1	1
10460	Replacement Nozzles & Retaining Ring	Bagged	1	1
10461	O Ring Replacement Kit	Bagged	1	1
10462	Adjustable Knob Assembly	Bagged	1	1
10463	Replacement Gun Needle Kit	Bagged	1	1
10524	45° Flexible Hopper Boot, with 2 Clamps	Bagged	1	1

Pliers, Screwdriver & Tape Measure

6" Long Nose Pliers, 6-in-1 Screwdriver, and 16' Tape Measure. The pliers have grooved jaws for slip resistant grip, forged steel construction and soft-grip handles. The Screwdriver includes 4 bits and 2 nut drivers, ball lock tips and solid high visibility orange handle. The tape measure has a plastic case, strap and metal 16' tape.

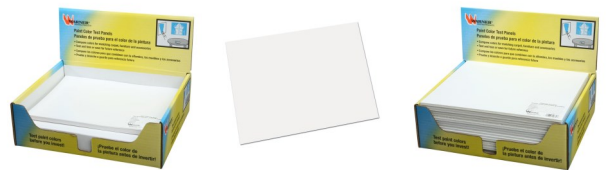


PLIERS, SCREWDRIVER & TAPE MEASURE

Item #	Description	Type of Packaging	Pack Weight	Pack Qty
10838	6" Long Nose Pliers	Labeled	4	10
10839	6-in-1 Screwdriver	Labeled	3	10
10840	16' Tape Measure	Labeled	5	10

Paint Test Set, Sheets and Panel

Easily take sheet or panel from room to room. Compare colors for matching carpet, furniture and accessories and view in different lighting. Test and toss or save for future use. Paint on dull/matte side of sheet/panel.



PAINT TEST SET, SHEETS AND PANEL

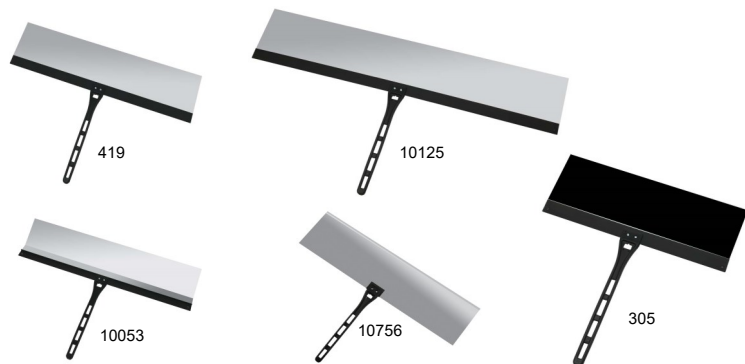
Item #	Description	Type of Packaging	Pack Weight	Pack Qty
10628	12" x 9" Polystyrene Paint Color Test Sheet	Boxed	2	20
10629	18" x 24" Polystyrene Paint Color Test Sheet	Boxed	7	20
10630	12" x 9" Foam Board Paint Color Test Panel	Boxed	3	20

Items shaded in Blue denote Made in the USA



Spray Shields

Spray shields provide protection when painting or finishing. They are lightweight to minimize fatigue and are easy to clean. Pivoting Handle Spray Shields have a 12" handle on the 24" blade and an 18" handle on the 36" or 48" blade. Handle pivots out of the way for storage and transportation. Also handle can pivot to adjust the angle to reach into corners. The blades are 9" deep including the plastic back plate. Approximately 7 5/8" exposed blade. The #10179 is 10" x 31".



ALUMINUM SPRAY SHIELDS, PIVOT HANDLE

Item #	Description	Type of Packaging	Pack Weight	Pack Qty
419	36" Aluminum Spray Shield, 18" Plastic Pivot Handle	Labeled	3	5
10125	48" Aluminum Spray Shield, 18" Plastic Pivot Handle	Labeled	8	5
10053	36" Bent Aluminum Spray Shield, 18" Plastic Pivot Handle	Labeled	8	5
10756	36" H.D. Aluminum Spray Shield with 1/2" Bent Edge, 18" Plastic Pivot Handle	Labeled	7.25	5

PLASTIC SPRAY SHIELDS, PIVOT HANDLE

Item #	Description	Type of Packaging	Pack Weight	Pack Qty
305	24" Plastic Spray Shield, 12" Plastic Pivot Handle	Labeled	5	5



ALUMINUM SPRAY SHIELDS ADJUSTABLE HANDLE

Item #	Description	Type of Packaging	Pack Weight	Pack Qty
10049	24" Aluminum Spray Shield, Adj. Swivel Head, with 18" Wood Handle	Labeled	9	5
10050	36" Aluminum Spray Shield, Adj. Swivel Head, with 18" Wood Handle	Labeled	10	5



SHIELD HOLDER & CARDBOARD

Item #	Description	Type of Packaging	Pack Weight	Pack Qty
10187	Plastic Spray Shield Holder	Labeled	4	5
10179	31" Cardboard for Spray Shield Holder, 10" x 31"	Labeled	12	50
11362	Cardboard Spray Shield Holder	Labeled	4	5

Miscellaneous Paint Accessories

MISCELLANEOUS PAINT ACCESSORIES

Item #	Description	Type of Packaging	Pack Weight	Pack Qty
138	Glass Cutter	Carded	1	10
142	Glazier Push Points, #7, Approx. 50	Carded	1	10
395	Double Ended Window Tool, S.S., Full Tang Blade	Carded	2	5
411	Swivel Pot Hook	Carded	2	10
412	Handy Pot Hooks, Card of 2	Carded	2	10
10031	Super Soft Knee Pads	Labeled	8	6 pair
34016	Graining Tool	Carded	2	10
10263	Brush Extension	Carded	4	2
10831	5 Gallon Wood Paint Paddle, 21"	Labeled	31	250
11215	Paint Project Lifters, 8/Card, 6 Cards/Box	Carded		6



Items shaded in Blue denote Made in the USA

Paint and Trim Guides

Thin, flat paint guides help give you a perfect edge. They protect molding, trim and non-painted surfaces from spatter and over-painting. #'s 428 & 433 have a S.S. blade. #431 is polystyrene. #'s 432 & 434 have aluminum handle & coated steel blade.



PAINT & TRIM GUIDES

Item #	Description	Type of Packaging	Pack Weight	Pack Qty
428	12" Paint Guide	Labeled	3	10
433	23" Paint Guide & Wallcovering Tool	Labeled	6	10
431	Triple Edge Guide	Labeled	3	10
434	10" Paint Guide	Labeled	2	20
432	15" Paint Guide	Labeled	2	20
20147	+12" Plastic Paint Guide	Labeled	1	20

Pry Bars

Rugged tools help remove molding and trim fast and easy. Every toolbox needs one of these pry bars.



PRY BARS

Item #	Description	Type of Packaging	Pack Weight	Pack Qty
443	Pry Bar	Labeled	5	10
10350	Painter's Pry Bar	Labeled	4	5
11090	Painter's Series Pry Bar, W/ Ham Ca	Labeled	2	5

Bucket Openers

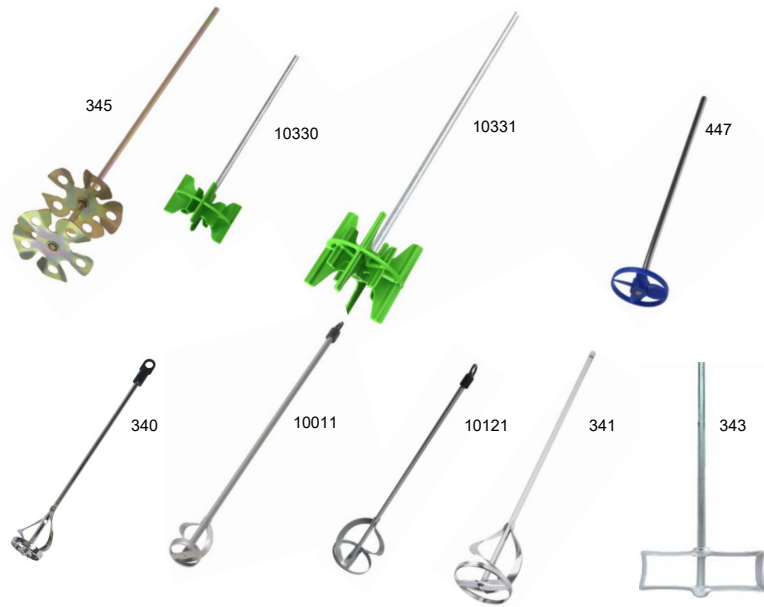


BUCKET OPENERS

Item #	Description	Type of Packaging	Pack Weight	Pack Qty
556	Plastic Pail Opener	Labeled	3	5
144	Aluminum Lid Cutter/Closer/Opener	Labeled	4	5
10000	Paint Can Opener, 2 per Label	Carded	1	10
260	Wire Paint Can Opener, 100 Bulk	Boxed	10	100

Mixers

Use heavy-duty mixing blades for paint, drywall compound, adhesive, driveway coatings and other viscous materials. All have steel shafts for 1/2" or 3/8" drills. Mixer heads reach to the bottom of the bucket. Model #345 mixer with twin propeller blades has an adjustable upper blade.



MIXERS

Item #	Description	Type of Packaging	Pack Weight	Pack Qty
345	+5" Twin Propeller Blade Mixer, 25" Hex Shaft, Fits 1/2" Drill	Labeled	9	5
10330	1 Gallon Plastic Paint Mixer, 10"	Labeled	1	6
10331	5 Gallon Plastic Paint Mixer, 18"	Labeled	3	6
447	1 Gallon 2" Plastic Paint Mixer	Labeled	3	10
340	1 Gallon Paint Mixer, 2-3/8" Spiral Blades, Heavy Duty, 15-3/4" Long Hex Shaft, 3/8" Drill	labeled	10	6
10011	1-5 Gallon Paint/Epoxy 1-3/4" Spiral Mixer, 18-3/4" Long Hex Shaft, 3/8" Drill	Labeled	4	6
10121	5 Gallon 3-1/4" Spiral Paint Mixer, 15-3/4" Long Shaft, 3/8" Drill	Labeled	4	6
341	5 Gallon Paint Mixer, 4" Spiral Blades, Heavy Duty, 22-3/4" Long Hex Shaft, 1/2" Drill	Labeled	16	6
343	Heavy Duty Compound Mixer, 30" Long Hex Shaft, 3/8" Drill	Labeled	10.5	6



STRAINER BAG SQUEEGEE AND PAIL SCOOP

Item #	Description	Type of Packaging	Pack Weight	Pack Qty
11269	Strainer Bag Squeegee w/ Pail Scoop	Labeled		10

Plastic Buckets & Can Clip

A variety of buckets for all maintenance and construction projects. Economical buckets make work go faster and cleanup easier. #543 has a .070 wall thickness.



BUCKETS

Item #	Description	Type of Packaging	Pack Weight	Pack Qty
543	5 Gallon Plastic Bucket	Labeled	20	10
550	Promotional Plastic 5 Quart Bucket	Labeled	7	30
10056	5 Quart Measuring Container	Labeled	8	100
10059	5 Quart Container Lid	Labeled	3	50
11094	3-in-1 Paint Can Clip, 15/Bucket	Labeled		15

Paint Grid and Roller Trays



PAINT GRID AND ROLLER TRAYS

Item #	Description	Type of Packaging	Pack Weight	Pack Qty
11085	5-Gallon Metal Paint Grid	Labeled		12
11086	9" Roller Plastic Paint Tray, Deep well	Labeled		6
11087	9" Roller Metal Paint Tray	Labeled		6

Brush & Roller Cleaners



BRUSH & ROLLER CLEANERS

Item #	Description	Type of Packaging	Pack Weight	Pack Qty
269	Brush Comb & Roller Cleaner	Carded	2	10
279	Brush & Roller Cleaner	Carded	2	12
380	Roller-Brush Cleaner	Carded	8	4
10876	+Brush & Roller Cleaner	Carded	2	6

Warner® Manufacturing Company

Paint Tote

The 3-in-1 Paint Tote has double handles that provide stability for holding in one hand when loading roller, brushes and transporting. The comfortable ergonomic grip area built into the bottom of the tote to hold the bucket comfortably in the palm of your hand. The rotating roller tray can be stored out of the way when not in use. A thin disposable liner is available to avoid cleanup. Top dimensions: 5.25" x 7.25", bottom dimension: 4" x 6", tray dimension: 5.75" long x 5.375" wide. Hold 1 quart or 1/4 gallon. Paint Tote is polypropylene. Liner is PETE (Polyethylene terephthalate).



3-IN-1 PAINT TOTE

Item #	Description	Type of Packaging	Pack Weight	Pack Qty
20630	3-in-1 Paint Tote	Labeled	4	4
20631	Transparent Replacement Liners, 5 each 3-packs for a total of 15 liners	Labeled	2	5

3-in-1 Paint Tote™ US Patent Number 10,086,977.

Grunt® 1-Gallon Paint Can Carrier

Attaches to your can in seconds. Hook bail & hook rim. Paint from the can. Less mess, quicker clean up. Built in ladder hook. Magnetic paintbrush holder. Offset handle makes it easy to get brush in and out of can.



GRUNT® 1-GALLON PAINT CAN CARRIER

Item #	Description	Type of Packaging	Pack Weight	Pack Qty
10891	+Grunt® 1-Gallon Paint Can Carrier	Carded	2	5
10897	+Grunt® 1-Gallon Paint Can Carrier	Labeled	1.5	5

PAINT CAN CARRIER WITH MAGNET & OPENER

Item #	Description	Type of Packaging	Pack Weight	Pack Qty
11104	Paint Can Carrier with Magnet & Opener	Carded	3.5	6

Items shaded in Blue denote Made in the USA



Soft Grip Wire Brushes

Wire brushes remove rust, scale and flaking paint. Also for roughing smooth surfaces before applying adhesives. Our wire brushes are either high carbon steel, stainless steel, nylon, or brass. The handles are made of polypropylene and thermoplastic rubber (TPR).



SOFT GRIP WIRE BRUSHES

Item #	Description	Type of Packaging	Pack Weight	Pack Qty
10481	+Soft Grip Mini Brush Set	Labeled	3	12
10482	Soft Grip 14" Steel Wire Brush with Scraper, 3x13 row	Labeled	3	6
10483	Soft Grip 14" Stainless Wire Brush with Scraper, 3x13 row	Labeled	3	6
10485	Soft Grip 12" Steel Wire Brush with Scraper, 4x11 row	Labeled	4	6
10486	Soft Grip 10" Steel Shoe Handle Wire Brush, 4x16 row	Labeled	3	6
10492	Soft Grip Wide Brass Stripper Brush 5x11 row	Labeled	2	10
11123	3-Pack MULTI Mini Brush Set; 1 each SS, Brass and Nylon Brush	Reusable Holder		12
11124	3-Pack BRASS Mini Brush Set	Reusable Holder		12
11125	3-Pack STAINLESS STEEL Mini Brush Set	Reusable Holder		12
11315	3-Pack NYLON Mini Brush Set	Reusable Holder		12
11159	3-in-1 Caulk Tool	Carded		10
11160	2-in-1 Painter's Brush, Steel Bristle, 1.75" 4-Edge Scraper, 6x10 row	Labeled		6
3410108	3-IN-1 Stripping Brush	Carded	2.02	10
3410486	10.25" Steel Shoe Handle Wire Brush 4x16 row, Labeled	Cut Carton	3.6	8
3410491	Soft Grip Nylon Stripper Brush, 5x11 row, Labeled	Cut Carton	1.9	12
3410493	Soft Grip Stainless Steel Stripper Brush, 5x11 row, Labeled	Cut Carton	2.3	12
3410487	Steel Wire Scrub Brush w/ Scraper, Threaded, row	Cut Carton	5.4	8

Wood Handle Wire Brushes

Wire brushes remove rust, scale and flaking paint. Also for roughing smooth surfaces before applying adhesives. Our wood handle wire brushes are 1070 steel. The handles are made of Schima wood. The scraper is zinc plated steel.



WOOD HANDLE WIRE BRUSHES

Item #	Description	Type of Packaging	Pack Weight	Pack Qty
11081	Wood Handle 13-5/8" Wire Brush w/Scraper, 3x19 row	Labeled		12
11082	Wood Handle 13-5/8" Wire Brush, 3x19 row	Labeled		12
11083	Wood Handle 10" Wire Brush w/Scraper, 4x16 row	Labeled		12
11084	Wood Handle 10" Wire Brush, 4x16 row	Labeled		12



WIRE BRUSHES

Item #	Description	Type of Packaging	Pack Weight	Pack Qty
572	Mini Brush Set, 3 Piece: S.S., Brass & Nylon	Bagged	2	12
10024	Brass Mini Brush, 2 Pack	Bagged	1	24
10025	Stainless Steel Mini Brush, 2 Pack	Bagged	1	24
11021	4-Piece Wire Brush Set	Carded	2	12

Strap-N-Stride™ Aluminum Stilts

Lightweight stilts are perfect for handling walls and overheads where scaffolding and ladders are inconvenient. Strap-N-Stride™ Adjustable stilts adjust quickly and easily without tools, featuring dual-action spring action to make walking more natural. Stilts have cotton straps with heavy-duty spring clips on the toe and calf. Permanently installed at the factory to prevent accidental loss. Other features include wider adjustable sole and heel plates with wider rubber sole bottoms for stability. Instruction manual included. Weight limit of 230 lbs with tools. #10770 has 7 holes. #10771 has 9 holes.



STRAP-N-STRIDE™ ALUMINUM STILTS

Item #	Description	Type of Packaging	Pack Weight	Pack Qty
10770*	Strap-N-Stride™ Aluminum Stilts 18"-30"	Boxed	16	1 pair
10771*	Strap-N-Stride™ Aluminum Stilts 24"-40"	Boxed	18.25	1 pair

STRAP-N-STRIDE™ STILT REPLACEMENT PARTS

Item #	Description	Type of Packaging	Pack Weight	Pack Qty
10233	Side Pole Kit 18" - 30", for #10770	Bagged	2	1 kit
10232	Side Pole Kit 24" - 40", for #10771	Bagged	3	1 kit
10239	Upper Side Pole Clamping Kit	Bagged	1	1 kit
6473	Spring Kit	Bagged	1	1 kit
10783	Bolts/Bearing Overhaul Kit	Bagged	1	1 kit
7090	Nylon Bushing Kit	Bagged	1	1 kit
6476	Wing Bolt Kit	Bagged	1	1 kit
10238	Leg Support Cuff Kit	Bagged	1	1 kit
10775	Heel Cup Kit	Bagged	1	1 kit
10776	Strap Kit* All Straps/Pads for a pair	Bagged	1	1 kit
10773	Foot/Floor Plate Kit	Bagged	1	1 kit
10774	Floor Pad Kit	Bagged	2	1 kit
10812	Toe Strap Kit	Bagged	1	1 kit
10813	Ankle Strap and Buckle Kit, for 1 stilt	Bagged	1	1 kit
10814	Ankle Strap Pad Kit	Bagged	1	1 kit
10815	Calf Strap Kit	Bagged	1	1 kit



Read and follow any safety related information in or on the product and packaging

CALL WARNER CUSTOMER SERVICE FOR PARTS LISTS @ 800-444-0606

*90-Day Limited Warranty. See www.warnertool.com or call 800-444-0606 for details.

EZ-Stride® Step-Up Benches

EZ-Stride® Step-Up Benches are made of lightweight, extruded, high-strength aluminum. They set up quickly and easily and are available in four sizes, 24", 29", 35" and 46". They fit in small, tight areas and are easy to transport. They hold up to 300 lbs with tools. Assembly tools are included. The bench top is 9-1/2" wide and 28" long.

EZ-STRIDE® STEP-UP BENCHES

Item #	Description	Type of Packaging	Pack Weight	Pack Qty
10225*	EZ-Stride® Step-up Bench 24"	Boxed	27	2
10226*	EZ-Stride® Step-up Bench 29"	Boxed	30	2
10227*	EZ-Stride® Step-up Bench 35"	Boxed	40	2
10228*	EZ-Stride® Step-up Bench 46"	Boxed	57	2



EZ-STRIDE® STEP-UP BENCH REPLACEMENT PARTS

Item #	Description	Type of Packaging	Pack Weight	Pack Qty
10296	Foot Pad Kit for #10225, #10226, #10227 & #10228, #10862, #10863, #10864, #10865	Bagged	1	1
10297	24" & 29" Spreader Bar Kit for #10225 & #10226, #10862 & #10863	Bagged	1	1
10298	35" & 46" Spreader Bar Kit for #10227 & #10228, #10864 & #10865	Bagged	1	1
10314	Hinge Kit for #10225, #10226, #10227 & #10228, #10862, #10863, #10864, #10865	Boxed	1	1

Read and follow any safety related information in or on the product and packaging

CALL WARNER CUSTOMER SERVICE FOR PARTS LISTS @ 800-444-0606

*90-Day Limited Warranty. See www.warnertool.com or call 800-444-0606 for details.

EZ-Stride® Drywall Bench

The EZ-Stride® Folding Drywall Bench is made out of lightweight, extruded aircraft aluminum with heavy-duty welds, and it holds up to 450 lbs with tools. Bench top measures 9-1/2" wide and 48" long, providing ample room for working. The height adjusts from 18" to 28". The bench folds to 6-1/2" x 16" x 48" and weighs just 36 lbs.



EZ-STRIDE® DRYWALL BENCH

Item #	Description	Type of Packaging	Pack Weight	Pack Qty
10329*	EZ-Stride® Drywall Bench	Boxed	36	1



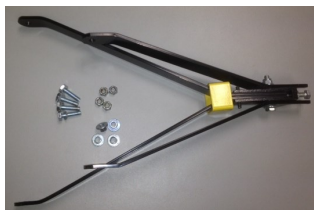
EZ-STRIDE® DRYWALL BENCH REPLACEMENT PARTS

Item #	Description	Type of Packaging	Pack Weight	Pack Qty
10040	Extension Leg Kit, 4 Legs & 2 Cross Bars, for #10329 Bench height can be adjusted from 41" - 47"	Boxed	21	1
10160	Replacement Extension Leg Braces/Steps for #10040, 2 ea	Boxed	3	1
10127	Replacement Rubber Foot Pads, 4 ea, for #10329	Bagged	1	1
10090	Replacement Leg with Rubber Pad Attached, 1 ea, for #10329	Bagged	2	1
10345	Replacement Step, 1 ea, for #10329 with Bolts & Rollers	Boxed	5	1
10634	Safety Locking Collar, 2/bag, for #10329	Bagged	.5	1
10843	Adj. Handle Assembly, for #10329	Boxed	1.15	1
10844	Folding Hinge Assembly, for #10329	Boxed	1	1
10845	A Frame Leg Holder, for #10329	Boxed	1	1

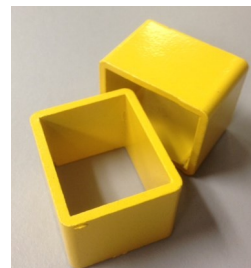
10843



10844



10634



10845



****Read and follow any safety related information in or on the product and packaging****

CALL WARNER CUSTOMER SERVICE FOR PARTS LISTS @ 800-444-0606

*90-Day Limited Warranty. See www.warnertool.com or call 800-444-0606 for details.

Taping Knives

Offering a range of taping knives, typically 6" and 8" knives are used for setting tape and 10" and 12" blades are used for applying finish coats. Blades are supported with aluminum backings.

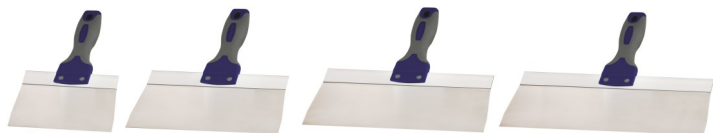
PROGRIP® Blue Steel & Stainless Steel

The PROGRIP® line of taping knives features soft grip, ergonomic handles with blue steel or stainless steel blades. The handles are polypropylene with a TPE (Thermoplastic Elastomer) overmold. Aluminum back plates. Handles are riveted to blades.



PROGRIP® - BLUE STEEL TAPING KNIVES

Item #	Description	Type of Packaging	Pack Weight	Pack Qty
10884	+PROGRIP® 6" Soft Grip Taping Knife, Blue Steel	Labeled	4	5
10871	PROGRIP® 8" Soft Grip Taping Knife, Blue Steel	Labeled	4	5
10872	PROGRIP® 10" Soft Grip Taping Knife, Blue Steel	Labeled	4	5
10873	PROGRIP® 12" Soft Grip Taping Knife, Blue Steel	Labeled	4	5
10879	PROGRIP® 14" Soft Grip Taping Knife, Blue Steel	Labeled	4	5



PROGRIP® - STAINLESS STEEL TAPING KNIVES

Item #	Description	Type of Packaging	Pack Weight	Pack Qty
10916	6" Painter's Taping Knife SS	Labeled	4	5
10918	8" Painter's Taping Knife SS	Labeled	4	5
10920	10" Painter's Taping Knife SS	Labeled	4	5
10922	12" Painter's Taping Knife SS	Labeled	4	5

Bucket Scoop

DRYWALL REPAIR PATCH

Item #	Description	Type of Packaging	Pack Weight	Pack Qty
11172	Bucket Scoop	Labeled		5

Professional Aluminum Backing Plate

Aluminum backing provides blade rigidity while making these knives up to 40% lighter than standard taping knives. Polypropylene handle is molded to the extruded aluminum backing plate so it cannot come loose. Blade flares out at edges to reach into corners. Blue steel or stainless steel blades.



BLUE STEEL TAPING KNIVES, PLASTIC HANDLE

Item #	Description	Type of Packaging	Pack Weight	Pack Qty
746	6" Taping Knife, Plastic Handle, Blue Steel	Labeled	2	5
748	8" Taping Knife, Plastic Handle, Blue Steel	Labeled	2	5
750	10" Taping Knife, Plastic Handle, Blue Steel	Labeled	3	5
752	12" Taping Knife, Plastic Handle, Blue Steel	Labeled	3	5



STAINLESS STEEL TAPING KNIVES, PLASTIC HANDLE

Item #	Description	Type of Packaging	Pack Weight	Pack Qty
758	8" Taping Knife, Plastic Handle, Stainless Steel	Labeled	2	5
760	10" Taping Knife, Plastic Handle, Stainless Steel	Labeled	2	5
762	12" Taping Knife, Plastic Handle, Stainless Steel	Labeled	3	5



Items shaded in Blue denote Made in the USA

Painter's Series Taping Knives

Full-Tang, precision ground, mirror finish blade coated to prevent rust. Solvent resistant, durable plastic nylon handles. Carbon steel blades.

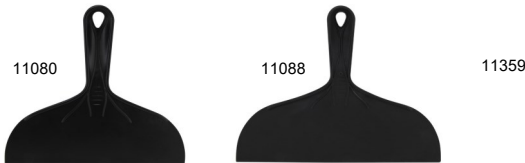


PAINTER'S SERIES—FLEX—CARBON STEEL

Item #	Description	Type of Packaging	Pack Weight	Pack Qty
11222	8" Flex Taping Knife, Hammer Cap™	Labeled	3	5
11223	10" Flex Taping Knife, Hammer Cap™	Labeled	3	5

Plastic Taping Knives

High-impact molded plastic are an excellent value.



PLASTIC TAPING KNIVES

Item #	Description	Type of Packaging	Pack Weight	Pack Qty
11080	8" Plastic Taping Knife	Labeled	2	20
11088	10" Plastic Taping Knife	Labeled	2	20
11361	2-Pack Joint Knife Set	Labeled		10

Molded Backing Plate

High-impact handle of molded plastic handle with blue steel blades are an excellent value. They are 40% lighter than ordinary knives.

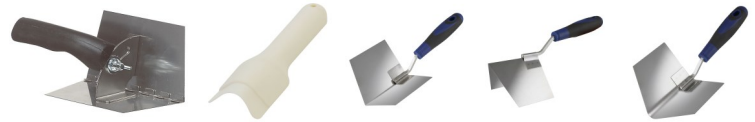


BLUE STEEL TAPING KNIVES, PLASTIC HANDLE

Item #	Description	Type of Packaging	Pack Weight	Pack Qty
192	8" Taping Knife, Plastic Handle, Blue Steel	Labeled	4	10
193	10" Taping Knife, Plastic Handle, Blue Steel	Labeled	5	10
194	12" Taping Knife, Plastic Handle, Blue Steel	Labeled	5	10

Corner and Curved Trowels

#214 Stainless steel blade is corrosion-proof and long lasting. Adjustable trowel can handle a variety of wall-ceiling applications. Reversible handle on the adjustable trowel gives you two tip angles. Bull nose trowel # 148 is used to quick knock down mud on outside bull nose corners. Stainless steel blades and soft grip handles on #'s 10947, 10948 & 10949.



CORNER TROWELS

Item #	Description	Type of Packaging	Pack Weight	Pack Qty
214	Adjustable Inside Corner Trowel	Carded	3	4
148	Outside Bull Nose 3/4" Corner Trowel, Flex	Labeled	1	10
10947	Inside Corner Trowel	Labeled	2	5
10948	Outside Corner Trowel	Labeled	2	5
10949	Inside Bull Nose 3/4" Trowel	Labeled	2	5

Drywall Repair Patch

4" x 4" or 8" x 8" sizes. Self adhesive. Rustproof aluminum. Easy to install.

DRYWALL REPAIR PATCH

Item #	Description	Type of Packaging	Pack Weight	Pack Qty
11359	4"x4" Drywall Repair Patch			10
11360	8"x8" Drywall Repair Patch			10

Perfect Pass™ Joint Knife

Revolutionary notched design makes filling drywall joints fast & easy. Tape drywall joints in 3 easy steps. Allows perfect amount of drywall compound every time. No sanding necessary. Fewer steps and less mess! The Perfect Pass™ Joint Knife has a full-tang, precision ground, and mirror finished 6" blade. Durable plastic handle with hammer cap™.



PERFECT PASS™ JOINT KNIFE

Item #	Description	Type of Packaging	Pack Weight	Pack Qty
10832	Perfect Pass™ Joint Knife, 6"	Carded	2	5
10846	Perfect Pass™ 10/Counter Display, #10832	Boxed	4	10

The Perfect Pass™ US Patent Number **7,647,668**.

Sanders

Professional sanding heads, pads, and blocks are among the most forgiving in the industry. Thick, soft, and flexible pad, they help create the perfect joint or seam.

Hand Sanders

Hand sanders for finishing walls next to ceiling and corners. The sanding blocks are perfect for quick touch-ups or light duty projects around the house.



HAND SANDERS

Item #	Description	Type of Packaging	Pack Weight	Pack Qty
229	Professional Hand Sander	Labeled	6	5
3410497	Lightweight Hand Sander, Plastic, Carded	Cut Carton	2.4	5
336	Rubber Sanding Block	Carded	3	5
34436	Sanding Block, carded	Cut Carton	3	10
11135	Drywall Sanding Sponge, bagged	Cut Carton		10

Pole Sanders & Wood Pole

Professional pole sanders with swivel head assures surface sanding contact without head tipping or rocking. All sanding heads accept standard die-cut sandpaper and 3/4" standard threaded extension poles. The wood pole of the #218 is made of Tauari. #10457 is a 5" wood extension pole with metal male threads. Fits standard 3/4" thread accessories.



POLE SANDERS

Item #	Description	Type of Packaging	Pack Weight	Pack Qty
256	Pole Sander Head, Female Threaded	Labeled	6	5
218	Male Pole Sander with 48" Female Pole.	Labeled	3	1
3410496	Lightweight Pole Sander, Plastic, Head only, Female Threaded, Carded	Cut Carton	3.9	8

Sanding Blocks

Sanding blocks are perfect for quick touch-ups or light duty projects around the house.



HAND SANDERS

Item #	Description	Type of Packaging	Pack Weight	Pack Qty
34436	Sanding Block, carded	Cut Carton	3	10
336	Rubber Sanding Block	Carded	3	5

Saw

The ProCut® drywall saw has sawtooth grind, resulting in needle-sharp, long-lasting teeth. The 6-1/2" blade is extremely stiff with a chisel point. Ergonomic grip for comfort.



DRYWALL SAW

Item #	Description	Type of Packaging	Pack Weight	Pack Qty
625	ProCut® Drywall Saw 6 1/2" Blade	Carded	2	6

Hawkbill Knife

Flooring knives for linoleum and vinyl flooring features hawkbill blades and turned hardwood handles. Both have high-carbon cutlery steel blades.



HAWKBILL KNIVES

Item #	Description	Type of Packaging	Pack Weight	Pack Qty
11277	Soft Grip SS Hawk Bill Linoleum Knife, with Cover	Carded		10

Items shaded in Blue denote Made in the USA



Mud Pans

Mud pans for drywall compound are available in stainless steel, plastic and galvanized steel in 12" and 14" sizes. Mud pans #196 and #197 have heli-arc welded seams and are leakproof. The other metal mud pans listed are spot-welded construction. The Plastic Mud #221 pan features removable steel blades along each side for knife scraping and easy cleaning. The lightweight #10827 Grip & Go Plastic Mud Pan has a strap that makes it easier to grip, hold and maneuver on jobsite at all angles. The slots on the ends hold taping knives free from mud. Pan fits up to 10" knife.



MUD PANS

Item #	Description	Type of Packaging	Pack Weight	Pack Qty
197	12" Stainless Steel Heli-Arc Mud Pan	Labeled	15	10
196	14" Stainless Steel Heli-Arc Mud Pan	Labeled	14	10
206	12" Galvanized Mud Pan	Labeled	14	10
267	14" Galvanized Mud Pan	Labeled	16	10
207	12" Stainless Steel Mud Pan	Labeled	13	10
221	12" Plastic Mud Pan	Labeled	8	10
10827	10" Grip & Go™ Mud Pan	Labeled	7	4

Grip & Go™ Mud Pan US Patent Number **9,290,953 B2**

Application Brushes

Applicator brushes are used for applying masonry and stucco, adhesives and compounds.



APPLICATOR BRUSHES

Item #	Description	Type of Packaging	Pack Weight	Pack Qty
457	Texture-Masonry Brush	Labeled	4	10
10610	+Tampico Masonry Brush	Labeled	5	6

Items shaded in Blue denote Made in the USA



No Pock!™

No Pock!™ is a drywall compound additive specifically formulated to reduce pock marks while increasing the workability of the compound by reducing friction.



NO POCK!™

Item #	Description	Type of Packaging	Pack Weight	Pack Qty
96	No Pock!™, 64 oz.	Bottle	21	2
10984	No Pock!, 4 oz., 9/Counter Display	Bottle	3	1

Rubber Float and Tile Grout Spreader

Floats are used for finishing or smoothing drywall compound, stucco, concrete or grout. Plastic handle, Aluminum back plate.



RUBBER FLOAT

Item #	Description	Type of Packaging	Pack Weight	Pack Qty
976	4" x 9" x 5/8" Rubber Masonry Float	Labeled	5	10
996	+Tile Grout Spreader	Labeled	3	10

Adhesive Spreaders



ADHESIVE SPREADERS

Item #	Description	Type of Packaging	Pack Weight	Pack Qty
908	3" V-Notch Plastic Spreader, 3/16" Teeth	Labeled	2	20
909	3" Square-Notch Spreader, 1/16" Teeth	Labeled	2	20
10824	3" V-Notch ProCut™ Spreader, 2 pk	Labeled	2	5
11079	8" 1/8" Notched Plastic Adhesive Spreader	Labeled	2	20

Smoothers

Smoothers for virtually every need. They are made of plastic or foam and come in flexible or stiff for specific uses. #498 is made of polypropylene. #431 is made of polystyrene.



SMOOTHERS

Item #	Description	Type of Packaging	Pack Weight	Pack Qty
498	9" Plastic Smoother, Flexible	Labeled	4	20
431	Triple Edge Guide	Labeled	3	10

Wallcovering Kit

A handy kit for light home decorating projects. This kit provides all the necessary tools for wallcovering that is not prepasted.



WALLCOVERING KIT

Item #	Description	Type of Packaging	Pack Weight	Pack Qty
581	Vinyl Wallcovering Set	Clam Shell	10	10

Brushes

Wallcovering brushes with the proper stiffness produces a professional appearance. The 474 and 495 are 10" long. #'s 474 & 495 are polystyrene.



BRUSHES

Item #	Description	Type of Packaging	Pack Weight	Pack Qty
456	6" Pasting Brush	Labeled	3	10
474	+2-Way Smoother, 1 1/2" Bristles (451)	Labeled	3	10
495	2-Way Smoother, 3/4" Bristles (453)	Labeled	3	10

Items shaded in Blue denote Made in the USA



Seam Rollers

Double- or single-bracket construction, with plastic or wood rollers. Single-bracket roller works best in corners and along ceiling lines. Most feature contoured wooden handles. #232 roller is made of UHMW plastic.



SEAM ROLLERS

Item #	Description	Type of Packaging	Pack Weight	Pack Qty
32	+2" Hardwood Flat Seam Roller, Double Bracket	Labeled	3	10
423	+1" Wood Flat Seam Roller, Double Bracket	Labeled	2	10
222	+1" Plastic Flat Seam Roller, Double Bracket	Labeled	3	10
422	1" Plastic Flat Seam Roller, Single Bracket	Labeled	2	10
232	+2" Plastic Flat Seam Roller, Double Bracket	Labeled	3	10
416	1" Plastic Flat Seam Roller, Single Bracket	Labeled	1	10

Razor Knives

Razor knives have hardwood handles and steel housings to hold blades rigid. Warner's patented blade locking system is an industry exclusive.

See page 16 for replacement Single Edge Razor Blades



RAZOR KNIVES

Item #	Description	Type of Packaging	Pack Weight	Pack Qty
490	Razor Knife, Wood Handle, with 1 Blade	Carded	2	10
429	+Razor Knife, Wood Handle, with 1 Blade	Labeled	2	10

Items shaded in Blue denote Made in the USA



Lectric® Wallpaper Steamer

Profitable tool for rentals. Steamer operates on 110V, 15 amp household current. Draws 1,500 watts. Comes with narrow and standard steam pans, 15' steam hose, 15' electric cord with GFCI housing and extra water gauge glass. Also included are rental form pad, banner, DVD, Instructions, and parts list. U.L. listed—CSA in Canada. The rate of steam coming out of the hose is 3 psi. Tank opening is 7/8" diameter.



LECTRIC® WALLPAPER STEAMER

Item #	Description	Type of Packaging	Pack Weight	Pack Qty
5687	Lectric® Wall Steamer	Boxed	40	1

Read and follow any safety related information in or on the product and packaging

CALL WARNER CUSTOMER SERVICE FOR PARTS LISTS @ 800-444-0606

*1 Year Limited Warranty.

See www.warnertool.com or call 800-444-0606 for details.

Accessory Tools

Specialized tools designed by wallcovering professionals to make projects go smoother, faster. They will help you save time and minimize problems.



WALLCOVERING ACCESSORIES

Item #	Description	Type of Packaging	Pack Weight	Pack Qty
428	12" Paint Guide	Labeled	3	10
433	23" Paint Guide & Wallcovering Tool	Labeled	6	10
250	Wallcovering Perforator, 19" Handle	Labeled	1	1
449	Wallcovering Sponge, 7 3/4" x 3 3/8" x 2 1/2"	Bagged	2	24

Bucket Tree Display

The bucket tree holds twelve clear buckets that contain a variety of key impulse items.



BUCKET TREE

Item #	Description	Pack Qty
10811	Warner Bucket Tree	
260	Wire Paint Can Opener, 100 Bulk	100
902	1-1/2" Flex Plastic Putty Knife	20
10300	Soft Grip Safety 1st™ Scraper, with 5 Pack Tuck of Single Edge Blades	10
114	Mini Glass Scraper/Blade Holder with 2 Blades, Carded	20
102	Bucket of Blades, 50 Tucks in a Bucket, .009"	50/Bucket
10798	8 Point 18MM Economy Snap-Off Blade Knife with 1 Blade, 25/Bucket	25/Bucket
10799	13 Point 9MM Economy Snap-Off Blade Knife with 1 Blade, 50/Bucket	50/Bucket
366	Top Trigger Utility Knife, with 3 Blades	10
360	Utility Blades, .025", Card of 5	10
10838	6" Long Nose Pliers	10
10839	6-in-1 Screwdriver	10
10840	16' Tape Measure	10
6164	Tree Stand	1
10887	Header	1
102789	2-1/2 Quart Bucket with Label	9

Bucket Displays

Surveys show that almost 60% of store customers often buy items at the spur of the moment. Our bucket displays help attract and sell this bonus business.



BUCKET DISPLAYS

Item #	Description	Type of Packaging	Pack Weight	Pack Qty
101	Mini Glass Scraper/Blade Holder with 2 Blades, 25/Bucket	Bagged in Bkt	2	25
102	Bucket of Blades, 50 Tucks in a Bucket, .009"	Tucks in Bkt	5	50
1052	ProCut® Rasp N Knife® Bucket Display, 10/Bucket	Carded in Bkt	4	10
10798	8 Point 18MM Economy Snap-Off Blade Knife with 1 Blade, Uses #'s 120 & 10805	Bagged in Bkt	2	25
10799	13 Point 9MM Economy Snap-Off Blade Knife with 1 Blade, Uses #'s 116 & 10806	Bagged in Bkt	2	50
11094	3-in-1 Paint Can Clip, 15/Bucket	Labeled in Bkt	2	15

Items shaded in Blue denote Made in the USA



Countertop Displays

Countertop displays boost selling impact and increase sales.



COUNTERTOP DISPLAYS

Item #	Description	Type of Packaging	Pack Weight	Pack Qty
1039	Painter's 6-in-1 Scraper, 10/Counter Display, #379	Boxed	3	10
10173	8-in-1 Painter's Tool, 10/Counter Display, #90173	Boxed	4	10
10199	6-in-1 Painter's Tool, 10/Counter Display, #90199	Boxed	4	10
10495	15-in-1 Painter's Tool, 10/Counter Display, #10309	Boxed	5	10
10889	7-in-1 Spray Wrench, 10/Counter Display, #10830	Boxed	7	10
10971	5-in-1 Painter's Tool, 10/Counter Disp, American Craftsman, Red, White, Blue	Boxed	3	10

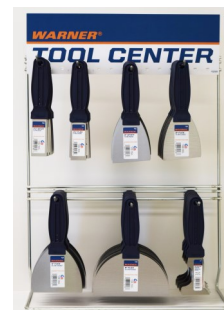
COUNTERTOP DISPLAYS

Item #	Description	Type of Packaging	Pack Weight	Pack Qty
10846	Perfect Pass™ 10/Counter Display, #10832	Boxed	4	10
10847	Folding 12-in-1 Tool, 6/Counter Display, #10801	Clam in Ctr Disp	4	6
10848	6-in-1 Painter's Tool, 10/Counter Display, #10189	Boxed	4	10
10984	No Pock!, 4 oz., 9/Counter Display	Bottle	3	3
11102	8-in-1 Painter's Tool, Black Blade, 10/Counter Display	Boxed	4	10
11220	Painter's Series Pry Bar, 10/Counter Display, #11090	Boxed	4	10
11185	Folding & Locking Zinc Utility Knife, w/1 Blade, 10/Counter Disp	Card in Ctr Disp		10
11187	Folding & Locking Plastic Utility Knife, w/1 Blade, 10/Counter Disp	Card in Ctr Disp		10

Assortments The practical way to display and sell many of the most popular tools.

1081 DIY SERIES DISPLAY

Item #	Description	Pack Qty
180	1-1/4" Stiff Putty Knife	10
181	3" Stiff Scraper	10
182	1-1/4" Flex Putty Knife	10
183	3" Flex Putty Knife	10
184	4" Flex Broad Knife	10
186	6" Flex Broad Knife	10
185	5-in-1 Painter's Tool, Carbon Steel	10



This display comes with 16x5" header #103404, 7 hooks #2859, and wire rack #101131.

1092 PLASTIC SERIES DISPLAY

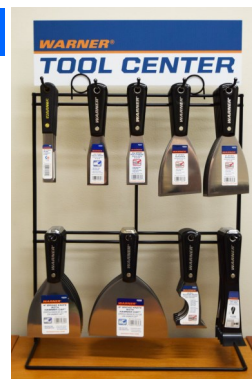
Item #	Description	Pack Qty
901	6" Flex Plastic Broad Knife	20
902	1-1/2" Flex Plastic Putty Knife	20
903	3" Flex Plastic Putty Knife	20
904	2" Flex Plastic Putty Knife	20
905	4" Flex Plastic Broad Knife	20
908	3" V-Notch Plastic Spreader	20
909	3" Square-Notch Plastic Spreader	20



This display comes with 16x5" header #103404, 7 hooks #2859, and wire rack #101131.

10337 PAINTER'S SERIES DISPLAY

Item #	Description	Pack Qty
504	3/4" Full Flex Putty Knife	5
10320	1-1/2" Flex Putty Knife	5
10327	1-1/2" Stiff Putty Knife	5
10322	3" Flex Putty Knife	5
10323	3" Stiff Scraper	5
10324	4" Flex Broad Knife, Hammer Cap™	5
10326	6" Flex Broad Knife, Hammer Cap™	5
10321	5-in-1 Painter's Tool	5
11090	Painter's Series Pry Bar, Hammer Cap™	5



This display comes with 16x5" header #103404, 9 hooks #2859, and wire rack #101131.

11011 PROGRIP® & SCRAPER ASSORTMENT A

Item #	Description	Pack Qty
813	2" (50MM) Double Edge Carbide Replacement Blade, 1/Card	2
814	2-3/8" (60MM) Double Edge Carbide Replacement Blade, 1/Card	2
10018	2" (50MM) Carbide 100X® Soft Grip Scraper, w/Knob	2
10020	2-3/8" (60MM) Carbide 100X® Soft Grip Scraper, w/Knob	2
90108	PROGRIP® 1-1/2" Flex Putty Knife	3
90109	PROGRIP® 1-1/2" Stiff Putty Knife	3
90115	PROGRIP® 3" Stiff Scraper, .060"	3
90124	PROGRIP® 4" Flex Broad Knife, Hammer Cap™	3
90126	PROGRIP® 6" Flex Broad Knife, Hammer Cap™	3
90127	PROGRIP® 1-1/2" Full Flex Putty Knife	3
90133	PROGRIP® 3" Full Flex Putty Knife	3
90199	PROGRIP® 6-in-1 Hammer Cap™ .080"	3

This assortment comes with 12 hooks #2859



11012 PUTTY KNIFE & SCRAPER ASSORTMENT B

Item #	Description	Pack Qty
90189	PROGRIP® 5-in-1 Painter's Tool, .080"	3
90199	PROGRIP® 6-in-1 Hammer Cap™ .080"	3
90173	PROGRIP® 8-in-1 Hammer Cap™ .060"	3
90109	PROGRIP® 1-1/2" Stiff Putty Knife	3
90115	PROGRIP® 3" Stiff Scraper, .060"	3
90108	PROGRIP® 1-1/2" Flex Putty Knife	3
90124	PROGRIP® 4" Flex Broad Knife, Hammer Cap™	3
90126	PROGRIP® 6" Flex Broad Knife, Hammer Cap™	3
90127	PROGRIP® 1-1/2" Full Flex Putty Knife	3
90133	PROGRIP® 3" Full Flex Putty Knife	3
185	DIY Series 5-in-1 Painter's Tool, Carbon Steel	3
180	DIY Series 1-1/4" Stiff Putty Knife, Carbon Steel	3
183	DIY Series 3" Flex Putty Knife, Carbon Steel	3
184	DIY Series 4" Flex Broad Knife, Carbon Steel	3
186	DIY Series 6" Flex Broad Knife, Carbon Steel	3
10832	Perfect Pass™ 6" Joint Knife	3
10801	The Painter's Blade® 12-in-1 Folding Knife	3
10018	2" (50MM) Carbide 100X® Soft Grip Scraper, w/Knob	3
10020	2-3/8" (60MM) Carbide 100X® Soft Grip Scraper, w/Knob	3
813	2" (50MM) Double Edge Carbide Replacement Blade, 1/Card	3
814	2-3/8" (60MM) Double Edge Carbide Replacement Blade, 1/Card	3
709	2-1/2" PistolGrip™ Scraper w/Knob, 4-Edge	3
731	1-3/4" PistolGrip™ Scraper w/o Knob, 4-Edge	3
711	1-3/4" 4-Edge Blades, Card of 2	3
712	2-1/2" 4-Edge Blades, Card of 2	3
34690	4" Big Blade Scraper, Steel Handle, 11-3/8" overall length	3
695	4" Big Blade Scraper Blades, Card of 5	3

This assortment comes with 27 hooks #2859



11013 PUTTY KNIFE & SCRAPER ASSORTMENT C

Item #	Description	Pack Qty
90189	PROGRIP® 5-in-1 Painter's Tool, .080"	3
90199	PROGRIP® 6-in-1 Hammer Cap™ .080"	3
90173	PROGRIP® 8-in-1 Hammer Cap™ .060"	3
90109	PROGRIP® 1-1/2" Stiff Putty Knife	3
90115	PROGRIP® 3" Stiff Scraper, .060"	3
90108	PROGRIP® 1-1/2" Flex Putty Knife	3
90124	PROGRIP® 4" Flex Broad Knife, Hammer Cap™	3
90126	PROGRIP® 6" Flex Broad Knife, Hammer Cap™	3
90127	PROGRIP® 1-1/2" Full Flex Putty Knife	3
90133	PROGRIP® 3" Full Flex Putty Knife	3
185	DIY Series 5-in-1 Painter's Tool, Carbon Steel	3
180	DIY Series 1-1/4" Stiff Putty Knife, Carbon Steel	3
183	DIY Series 3" Flex Putty Knife, Carbon Steel	3
184	DIY Series 4" Flex Broad Knife, Carbon Steel	3
186	DIY Series 6" Flex Broad Knife, Carbon Steel	3
10832	Perfect Pass™ 6" Joint Knife	3
10801	The Painter's Blade® 12-in-1 Folding Knife	3
10018	2" (50MM) Carbide 100X® Soft Grip Scraper, w/Knob	3
10020	2-3/8" (60MM) Carbide 100X® Soft Grip Scraper, w/Knob	3
813	2" (50MM) Double Edge Carbide Replacement Blade, 1/Card	3
814	2-3/8" (60MM) Double Edge Carbide Replacement Blade, 1/Card	3
709	2-1/2" PistolGrip™ Scraper w/Knob, 4-Edge	3
731	1-3/4" PistolGrip™ Scraper w/o Knob, 4-Edge	3
711	1-3/4" 4-Edge Blades, Card of 2	3
712	2-1/2" 4-Edge Blades, Card of 2	3
34690	4" Big Blade Scraper, Steel Handle, 11-3/8" overall length	3
695	4" Big Blade Scraper Blades, Card of 5	3
752	12" Blue Steel Taping Knife, Plastic Handle	2
750	10" Blue Steel Taping Knife, Plastic Handle	2
748	8" Blue Steel Taping Knife, Plastic Handle	2

This assortment comes with 30 hooks #2859



10858 ROSEWOOD SERIES DISPLAY

Item #	Description	Pack Qty
379	5-in-1 Painter's Tool, Carbon Steel Blade	5
609	1-1/2" Putty Knife, Stiff, Carbon Steel Blade	5
608	1-1/2" Putty Knife, Flex, Carbon Steel Blade	5
614	3" Putty Knife, Flex, Carbon Steel Blade	5
622	6" Broad Knife, Flex, Carbon Steel Blade	5
604	3/4" Putty Knife, Full Flex, Carbon Steel Blade	5
627	1-1/2" Putty Knife, Full Flex, Carbon Steel Blade	5
633	3" Putty Knife, Full Flex, Carbon Steel Blade	5
637	6" Broad Knife, Full Flex, Carbon Steel Blade	5



This display comes with 16x5" header #103404, 9 hooks #2859, and wire rack #101131.

11025 WIRE BRUSH DISPLAY

Item #	Description	Pack Qty
10485	Soft Grip 12" Steel Wire Brush w/Scraper, 4x11	4
11160 (2)	2-IN-1 Painter's Brush	8
3410108	Soft Grip 3-in-1 Stripper Brush	5
10486	Soft Grip 10" Steel Shoe Handle Wire Brush, 4x16	4
3410493	Soft Grip Wide Stainless Stripper Brush, 5x11	5
3410491	Soft Grip Wide Nylon Stripper Brush, 5x11	5
3410487	Soft Grip Steel Scrub Brush w/ Scraper, 6x19, Threaded	3
11125	3-Pack SS Mini Wire Brush Set	4
11123	3-Pack MULTI Mini Wire Brush Set	4



This display comes with 16x5" header #103404, 9 hooks #2859, and wire rack #101131.

45,000 Lumen 300W LED Light Cart

P10300

45,000 Lumen 300W LED Portable Light Cart

- Eight Powerful LED Chips project the light up to 175 feet
- LED lights are a whiter brighter light with a higher color temp than a metal halide or halogen bulb
- Instant start-up full power lighting
- 45,000 Lumens & 300W COB Adjustable fixture
- Can be used with a 1000W generator
- Lights up to 30,000 sq. ft
- Heavy duty steel cart
- Mast extends from 6.5' to 9' overall height
- IP Rating of IP44, Suitable for wet locations
- On/Off weatherproof switch
- 1 year limited warranty



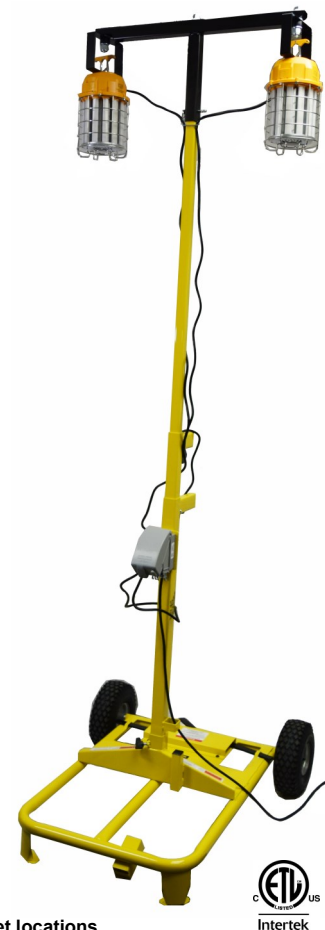
Lumens: 45,000
 Watts: 300, Amps: 2.5
 Power: 120V-60Hz
 IP Rating: IP44 Suitable for wet locations
 Cord: 5' 18/3 AWG SJTOW with standard plug
 Color Temp: 4000-5000K
 Shpng Wt: 124 lbs
 UPC: 7-24281-10300-6

360° LED Power Tower™ Double Head

P11310

36,000 Lumen 300W LED Portable Light Cart

- Lights up to 17,500 sq. ft
- 150 ft. diameter light projection
- 2 360° area light fixtures
- Two super bright LED provides 36,000 Lumens
- Two each 150W weatherproof 360° fixtures
- Mast height settings of 7', 10' & 12.5'
- Can be used with most small portable generators
- Portable, quickly packs for easy transport
- 1 year limited warranty



Lumens: 36,000
 Watts: 300, Amps: 2.5
 Power: 120V-60Hz
 IP Rating: IP44 Suitable for wet locations
 Cord: 5' 18/3 AWG SJTOW with std plug
 Color Temp: 4000-5000K
 Shpng Wt: 124 lbs
 UPC: 7-24281-11310-4



Shown in transport mode.
 Only 35" tall!
 Portable, quickly packs
 for easy transport.



Complies with ANSI Standards incorporated by OSHA regulations.

Read and follow any safety related information in or on the product and packaging.

1-year Limited Warranty
 See www.bulldogpower.com or call 800-444-0606 for details

LED Series—Rechargeable

800 Lumen Rechargeable LED

10998T +800 Lumen 10W Rechargeable LED Worklight

Super bright LED provides 800 Lumens. Cool touch LED technology. No light bulb to break or replace. COB technology. Durable die-cast aluminum housing is mounted on a metal H-Frame base with non-skid feet. Rechargeable lithium ion battery. High & low settings. Includes charging cord, USB cable & automobile charger. Weatherproof on/off switch. Quick release connection. Will work with #11067. 1 year limited warranty.

Lumens: 800 High/400 Low
Watts: 10
3.7V 5200mAh Li-ion Rechargeable Battery
Charging Time: 4-5 hours
Working Time: 2 Hours High/5 Hours Low
IP Rating: IP44 Suitable for wet locations
Cords: Charging Cord, USB & Automobile Cord
Color Temp: 4000-5000K
Shpng Wt: 3 lbs
UPC: 0-48661-10998-4



1600 Lumen Foldable/Rechargeable LED

11213 +1600 Lumen 20W Foldable & Rechargeable LED Worklight

Super bright LED provides 1600 Lumens. Cool touch LED technology. No light bulb to break or replace. COB technology. Durable die-cast aluminum housing is mounted on a metal base with non-skid feet. Folds flat for storage. Rechargeable lithium ion battery. High & low settings. Includes charging cord & automobile charger. Weatherproof on/off switch. 1 year limited warranty.

Lumens: 1600 High/800 Low
Watts: 20
3.7V 8800mAh Li-ion Rechargeable Battery
Charging Time: 4-5 hours
Working Time: 2 Hours High/4 Hours Low
IP Rating: IP44 Suitable for wet locations
Cords: Charging Cord & Automobile Cord
Color Temp: 4000-5000K
Shpng Wt: 4 lbs
UPC: 0-48661-11213-7



Tripod Stand

11067 3'-5' Tripod Floor Stand

Quick Release Connection
Stand fits Warner worklights #'s
11164, 11250, 11255, 11281, 11282, 11378,
11379, 10998T, 10998U, 11001T, 11441 &
11443
1 year limited warranty
Shpng Wt: 6 lbs
UPC: 0-48661-11067-6



Unique interchangeable system allows 11164, 11250, 11255, 11281, 11282, 11378, 11379, 10998T, 10998U, 11001T, 11441 & 11443 to fit & lock into 11067 tri-pod stand

1000 Lumen Rechargeable LED

11250 +1000 Lumen 10W Rechargeable LED Worklight

High power compact COB LED. 180° Rotating stand and handle. Plastic housing is mounted on a high impact plastic frame base. 3 Settings: high, low and safety strobe. Rechargeable lithium-ion battery. Includes charging cable. Weatherproof on/off switch. Cool touch LED technology. No light bulb to break or replace. Quick release connection. Will work with #11067. 1 year limited warranty.

Lumens: 1000 High/250 Low
Watts: 10
Light Beam Distance: 115 Ft./35M-40 Ft./13M
Power: Rechargeable Lithium-ion Battery
Charging Time: 6-7 hours
Working Time: 5 Hours High/10 Hours Low
IP Rating: IPX4 Suitable for wet locations
Cords: Charging Cable Included
Color Temp: 4000-5000K
Shpng Wt: 3 lbs
UPC: 0-48661-11250-2



1200 Lumen Battery Powered LED

11281 +1200 Lumen Battery Powered LED Worklight

High power compact SMD LED. 180° Rotating stand and handle. Plastic housing is mounted on a high impact plastic frame base. 3 Settings: high, low and safety strobe. 6 AA Batteries Included. Weatherproof on/off switch. Cool touch SMD LED technology. No light bulb to break or replace. Quick release connection. Will work with #11067. 1 year limited warranty.

Lumens: 1200 High/300 Low
Watts: 10/15
Light Beam Distance: 130 Ft./40M—80Ft./25M
Power: 6 AA Batteries included
Charging Time: NA
Working Time: Up to 24 hours
IP Rating: IPX4 Suitable for wet locations
Cords: NA
Color Temp: 4000-5000K
Shpng Wt: 3 lbs
UPC: 0-48661-11281-6



Complies with ANSI Standards incorporated by OSHA regulations.

Read and follow any safety related information in or on the product and packaging.

1-year Limited Warranty
See www.bulldogpower.com or call 800-444-0606 for details

LED Series—AC Corded

1800 Lumen Tripod LED

11065 +1800 Lumen Tripod 20W LED, 3'-5' Telescopic Light

3'-5' Telescopic tripod floor stand. Quick release portable worklight. Cool touch LED technology. No light bulb to break or replace. COB technology. Weatherproof on/off switch. 1 year limited warranty.

Lumens: 1800
Watts: 20
Power: 110V AC
IP Rating: IP44 Suitable for wet locations
Cord: 8' 18/3 AWG SJTW
Color Temp: 4000-5000K
Shpng Wt: 10.2 lbs
UPC: 0-48661-11065-2



3600 Lumen Tripod LED

11066 +3600 Lumen Tripod Dual 20W LED, 3'-5' Telescopic Light

3'-5' Telescopic tripod floor stand. Quick release portable worklights. Cool touch LED technology. No light bulb to break or replace. COB technology. Weatherproof on/off switch. 1 year limited warranty.

Lumens: 3600
Watts: Two each 20W light heads
Power: 110V AC
IP Rating: IP44 Suitable for wet locations
Cord: 8' 18/3 AWG SJTW
Color Temp: 4000-5000K
Shpng Wt: 13.4 lbs
UPC: 0-48661-11066-9



Tripod Stand

11067 3'-5' Tripod Floor Stand

Quick Release Connection
Stand fits Warner worklights #'s
11164, 11250, 11255, 11281, 11282, 11378,
11379, 10998T, 10998U, 11001T, 11441 &
11443
1 year limited warranty
Shpng Wt: 6 lbs
UPC: 0-48661-11067-6



1800 Lumen LED

11001T +1800 Lumen 20W LED Worklight

High brightness and high efficiency LED. Cool touch LED technology. No light bulb to break or replace. COB technology. Durable die-cast aluminum housing is mounted on a metal H-Frame base. Quick release connection. Will work with #11067. Weatherproof on/off switch. 1 year limited warranty.

Lumens: 1800
Watts: 20W
Power: 110V AC, Amp: .17
Rating: IP44 Suitable for wet locations
Cord: 5 ft. 18/3 AWG SJTW
Color Temp: 4000-5000K
Shpng Wt: 3 lbs
UPC: 0-48661-11001-0



3600 Lumen Double Head LED

11164 +3600 Lumen 40W Double Head LED

High brightness and high efficiency LED. Cool touch LED technology. No light bulb to break or replace. COB technology. Durable die-cast aluminum housing is mounted on a metal base. Weatherproof on/off switches. Quick release connection. Will work with #11067. 1 year limited warranty.

Lumens: 3600
Watts: Two each 20W light heads=40W total
Power: 110V AC
Rating: IP44 Suitable for wet locations
Cord: 8' 18/3 AWG SJTW
Color Temp: 4000-5000K
Shpng Wt: 9 lbs
UPC: 0-48661-11164-2



Complies with ANSI Standards incorporated by OSHA regulations.

Read and follow any safety related information in or on the product and packaging.

See www.bulldogpower.com or call 800-444-0606 for details

1-year Limited Warranty

Orders & Information

Phone: 800-444-0606

Fax: 877-927-6370

customerservice@warnertool.com

LED Series—AC Corded

2400 Lumen LED

11255 2400 Lumen 20W Portable LED Worklight

High brightness and high efficiency SMD LED. Cool touch SMD LED technology. Durable die-cast aluminum housing is mounted on a metal H-Frame base with non-skid feet. Weatherproof on/off switch. Quick release connection. Will work with #11067. #11067 not included. 1 year limited warranty.



Lumens: 2400
Watts: 20
Light Beam Distance: 195 Ft./60M
Power: 120V AC
Amps: .16
IP Rating: IPX4 Suitable for wet locations
Cord: 6 ft. 18/3 AWG SJTW
Color Temp: 4000-5000K
Shpng Wt: 4 lbs
UPC: 0-48661-11255-7



3500 Lumen LED

11282 3500 Lumen 30W Portable LED Worklight

High brightness and high efficiency SMD LED. Cool touch SMD LED technology. Durable die-cast aluminum housing is mounted on a metal H-Frame base with non-skid feet. Weatherproof on/off switch. Quick release connection. Will work with #11067. 1 year limited warranty.



Lumens: 3500
Watts: 30
Light Beam Distance: 240 Ft./75M
Power: 120V AC
Amps: .25
IP Rating: IPX4 Suitable for wet locations
Cords: 6 ft. 18/3 AWG SJTW
Color Temp: 4000-5000K
Shpng Wt: 4 lbs
UPC: 0-48661-11282-3



Unique interchangeable system allows 11164, 11250, 11255, 11281, 11282, 11378, 11379, 10998T, 10998U, 11001T, 11441 & 11443 to fit & lock into 11067 tri-pod stand

3500 Lumen LED

11378 3500 Lumen LED Portable Worklight

Contractor Grade, powerful LED for Large Worksites. High brightness and high efficiency SMD LED. Cool touch SMD LED technology. Durable die-cast aluminum housing is mounted on a metal H-Frame base with non-skid feet. Weatherproof on/off switch. Quick release connection. Will work with #11067. #11067 not included. 1 year limited warranty.



Lumens: 3500
Watts: 32
Light Beam Distance: 288 Ft./88M
Power: 110V AC
Amps: .29
IP Rating: IPX4 Suitable for wet locations
Cord: 6 ft. 18/3 AWG SJTW
Color Temp: 4000-5000K
Shpng Wt: 3lbs
UPC: 0-48661-11378-3



7000 Lumen LED

11379 7000 Lumen LED Portable Worklight

Contractor Grade, Powerful LED for Large Worksites. High brightness and high efficiency SMD LED. Cool touch SMD LED technology. Durable die-cast aluminum housing is mounted on a metal H-Frame base with non-skid feet. Weatherproof on/off switch. Quick release connection. Will work with #11067. #11067 not included. 1 year limited warranty.



Lumens: 7000
Watts: 72
Light Beam Distance: 321 Ft./98m
Power: 110V AC
Amps: .65
IP Rating: IPX4 Suitable for wet locations
Cord: 6 ft. 18/3 AWG SJTW
Color Temp: 4000-5000K
Shpng Wt: 4 lbs
UPC: 0-48661-11379-0



Complies with ANSI Standards incorporated by OSHA regulations.

Read and follow any safety related information in or on the product and packaging.

1-year Limited Warranty
See www.bulldogpower.com or call 800-444-0606 for details

Orders & Information
Phone: 800-444-0606
Fax: 877-927-6370
customerservice@warnertool.com

LED Series—Battery

220 Lumen Pocket LED Worklight

11179 220 Lumen 3W Pocket LED Worklight, 12/Counter Display

High brightness and high efficiency COB LED. Use hand free with the 180° swivel rotating magnetic clip or the powerful magnetic base. Top button on/off switch. Tough/Durable aluminum body. 6.5" overall length. Uses 3 AAA batteries included. 1 year limited warranty.



Lumens: 220
Watts: 3
Power: 3 AAA Batteries
IP Rating: IP44 Suitable for wet locations
Cord: No Cord
Color Temp: 4000-5000K
Shpng Wt: 3 lbs
UPC: 0-48661-11179-6

220 Lumen 4-in-1 LED Worklight

11177 220 Lumen 3W 4-in-1 LED Worklight, 6/Counter Display

High brightness and high efficiency COB LED. High and low brightness settings. Multi-directional rotating/swiveling hands free 4-in-1 worklight. 360° swivel hook. Directional flashlight on top. Powerful magnet on the base. ABS rubberized body. Uses 3 AA batteries included. 1 year limited warranty.



Lumens: 220 High/60 Low
Watts: 3
Power: 3 AA Batteries
IP Rating: IP44 Suitable for wet locations
Cord: No Cord
Color Temp: 4000-5000K
Shpng Wt: 4 lbs
UPC: 0-48661-11177-2

Magnetic Base Miniature LED

11257 250 Lumen 3W Magnetic Base Miniature LED, 6/Counter Display

Powerful magnet holds light securely in place. Ball-pivot base with magnet. 360° Rotating head. Clear impact resistant lens. Wide angle beam. Compact and lightweight. 3 AA Batteries Included. Weatherproof on/off switch. Cool touch SMD LED technology. No light bulb to break or replace. 1 year limited warranty.



Lumens: 250
Watts: 3
Light Beam Distance: 65 Ft./20M
Power: 3 AA Batteries included
Charging Time: NA
Working Time: Up to 7 hours
IP Rating: IPX2 Suitable for wet locations
Cords: NA
Color Temp: 4000-5000K
Shpng Wt: 3 lbs
UPC: 0-48661-11257-1



Complies with ANSI Standards incorporated by OSHA regulations.

Read and follow any safety related information in or on the product and packaging.

1-year Limited Warranty
See www.bulldogpower.com or call 800-444-0606 for details

Orders & Information
Phone: 800-444-0606
Fax: 877-927-6370
customerservice@warnertool.com

LED Series—Headlamps

70 Lumen LED Headlamp

11264
70 Lumen 3W LED Headlamp, 10/Counter Display



Wide angle beam for maximum light. 3 Settings: high, low and safety strobe. Tilting head to focus light. Adjustable elastic strap. 3 AAA batteries included. Weatherproof on/off switch.
1 year limited warranty.

Lumens: 70
Watts: 3
Light Beam Distance: 33 Ft./10M-180° Wide Beam
Power: 3 AAA Batteries included
Charging Time: NA
Working Time: Up to 7/9 hours
IP Rating: IPX2 Suitable for wet locations
Cords: NA
Color Temp: 4000-5000K
Shpng Wt: 2 lbs
UPC: 0-48661-11264-9



120/90 Lumen LED Headlamp

11265
160/70 Lumen 3W LED Headlamp, 8/Counter Display



3 Settings: high, low and safety strobe. Tilting head to focus light. Double elastic strap for maximum comfort. 3 AAA batteries included. Weatherproof on/off switch.
1 year limited warranty.

Lumens: 160 High/70 Low
Watts: 3
Light Beam Distance: 50 Ft./15M Wide Beam; 130 Ft./40M Focused Beam
Power: 3 AAA Batteries included
Charging Time: NA
Working Time: Up to 7/9 hours
IP Rating: IPX2 Suitable for wet locations
Cords: NA
Color Temp: 4000-5000K
Shpng Wt: 2 lbs
UPC: 0-48661-11265-6



200 Lumen Clip-On LED Headlamp

11266
200 Lumen 3W Clip-On LED Headlamp,
12/Counter Display



Lightweight headlamp attaches securely to brim. Focus light without interfering with your vision. Quickly clips on brim of hat. Wide angle beam. 3 AAA batteries included. Weatherproof on/off switch.
1 year limited warranty.

Lumens: 200
Watts: 3
Light Beam Distance: 60 Ft./18M
Power: 3 AAA Batteries included
Charging Time: NA
Working Time: Up to 5 hours
IP Rating: IPX2 Suitable for wet locations
Cords: NA
Shpng Wt: 2 lbs
UPC: 0-48661-11266-3



High Power LED Headlamp

11373
300/90 Lumen LED Headlamp

3 Settings: high, low and safety strobe. Tilting head to focus light. Double elastic strap for maximum comfort. 3 AAA batteries included. Weatherproof on/off switch.
1 year limited warranty.

Lumens: 300 High/90 Low
Watts: 5
Light Beam Distance: 134 Ft./41M
Power: 3 AAA Batteries included
Charging Time: NA
Working Time: Up to 7 hours
IP Rating: IPX2 Suitable for wet locations
Cords: NA
Color Temp: 4000-5000K
Shpng Wt: 2 lbs
UPC: 0-48661-11265-6



Complies with ANSI Standards incorporated by OSHA regulations.

Read and follow any safety related information in or on the product and packaging.

1-year Limited Warranty
See www.bulldogpower.com or call 800-444-0606 for details

Orders & Information

Phone: 800-444-0606

Fax: 877-927-6370

customerservice@warnertool.com

LED Series— NEW! COMING SOON!

4000 Lumen Rechargeable LED

11441 4000 Lumen LED Rechargeable Worklight



Contractor Grade, Powerful LED for Large Worksites. Super bright LED provides 4000 Lumens. Cool touch SMD LED technology. High and Low brightness settings. Rechargeable Lithium ion battery. 180° rotating stand. Strong Magnetic base. Built in hanging hook. Includes charging cord. USB port for recharging other devices. Weatherproof on/off switch. Attaches to Tripod #11067 (not included). 1 year limited warranty.



Lumens: 4000 High/2000 Low
Watts: 65
Power: Rechargeable Lithium-ion Battery
Charging Time: 6-7 hours
Working Time: 2 Hours High/4 Hours Low
IP Rating: IP44 Suitable for wet locations
Cord: Charging cord included
Color Temp: 5000K
Shpng Wt: 3.8 lbs
UPC: 0-48661-11441-4

2000 Lumen LED

11443 2000 Lumen LED Worklight

Super bright LED provides 2000 Lumens. Cool touch SMD LED technology. Continuous Light—No Switch. Durable die-cast aluminum housing is mounted on a metal H-Frame base. Quick release connection. Will work with #11067. Weatherproof on/off switch. 1 year limited warranty.



Lumens: 2000
Watts: 20
Light Beam Distance: 177 Ft./154M
Power: 110V AC
Amps: .18
IP Rating: IP44 Suitable for wet locations
Cord: 5 ft. 18/3 AWG SJTW
Color Temp: 4000-5000K
Shpng Wt: 3 lbs
UPC: 0-48661-11443-8



850 Lumen Rechargeable LED

10998U 850 Lumen Rechargeable LED Worklight



Super bright LED provides 850 Lumens. Cool touch SMD LED technology. High and Low brightness settings, and Strobe. Rechargeable lithium ion battery. 180° rotating stand. Includes USB charging cable. Weatherproof on/off switch. Quick release connection. Will work with #11067. 1 year limited warranty.

Lumens: 850 High/425 Low
Watts: 10
Power: Rechargeable Lithium-ion Battery
Charging Time: 5 hours
Working Time: 3 Hours High/5 Hours Low
IP Rating: IP44 Suitable for wet locations
Cord: USB charging cord included
Color Temp: 4000K
Shpng Wt: 1.5 lbs
UPC: 0-48661-10998-4

Complies with ANSI Standards incorporated by OSHA regulations.

Read and follow any safety related information in or on the product and packaging.

See www.bulldogpower.com or call 800-444-0606 for details

1-year Limited Warranty

Orders & Information

Phone: 800-444-0606

Fax: 877-927-6370

customerservice@warnertool.com

BD-1



P11010

+500W HD Floor Light

- 500W weatherproof fixture
- PVC-coated solid steel base
- Comfortable foam grip
- Lights up to 5,000 sq ft
- 8 ft. 16/3 AWG SJTOW
- 5 year limited warranty

Lumens: 10,000

Watts: 500

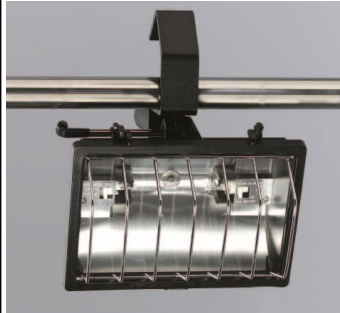
Power: 120V-60Hz

Amps: 4.2

Shpng Wt: 7 lbs

UPC: 7-24281-00001-5

BD-CLAMP



P11005

+500W HD Clamp Light

- Screw type clamp mount anywhere, great for 1.5"-3" tubing & scaffolding
- 500W weatherproof fixture
- Lights up to 5,000 sq ft
- 8 ft. 16/3 AWG SJTOW
- 5 year limited warranty

Lumens: 10,000

Watts: 500

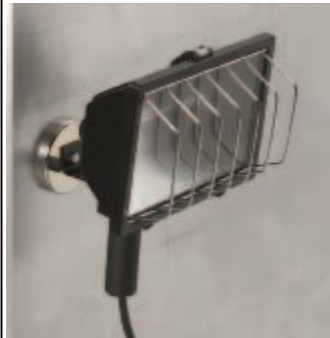
Power: 120V-60Hz

Amps: 4.2

Shpng Wt: 6 lbs

UPC: 7-24281-00010-7

BD-MAG



P11040

+500W HD Magnet Light

- Powerful 95-lb pull strength magnet
- 500W weatherproof fixture
- Lights up to 5,000 sq ft
- 8 ft. 16/3 AWG SJTOW
- 5 year limited warranty

Lumens: 10,000

Watts: 500

Power: 120V-60Hz

Amps: 4.2

Shpng Wt: 6 lbs

UPC: 7-24281-00009-1

Complies with ANSI Standards incorporated by OSHA regulations.

Read and follow any safety related information in or on the product and packaging.

5-year Limited Warranty
See www.bulldogpower.com or call 800-444-0606 for details

Orders & Information

Phone: 800-444-0606

Fax: 877-927-6370

customerservice@warnertool.com

Silver Series Plus—Ultra-fast Setup, Takedown & Adjustment



ST-7
S10111
+Twin, 500W Halogen 3'-7" Telescopic Light w/ Switches & Handles

- Twin 500W weatherproof fixtures
- Lights up to 12,000 sq ft
- 10 ft. 16/3 AWG SJTOW
- 1 year limited warranty

Lumens: 20,000
Watts: 1000
Power: 120V-60Hz
Amps: 8.4
Shpng Wt: 20 lbs
UPC: 7-24281-10111-8



QL-1
Q11011
+500W Floor Light

- 500W weatherproof fixture
- Continuous light—no switches
- Lights up to 5,000 sq ft
- 5 ft. 16/3 AWG SJTOW
- 1 year limited warranty

Lumens: 10,000
Watts: 500
Power: 120V-60Hz
Amps: 4.2
Shpng Wt: 4 lbs
UPC: 7-24281-70011-3



SS-8
S10110
+500W Single Halogen 4'-8" Telescopic Light w/ Switch & Handle

- 500W weatherproof fixture
- Lights up to 5,000 sq ft
- 10 ft. 16/3 AWG SJTOW
- 1 year limited warranty

Lumens: 10,000
Watts: 500
Power: 120V-60Hz
Amps: 4.2
Shpng Wt: 11 lbs
UPC: 7-24281-10110-1

Halogen Accessories Series—Built Bull Dog Tuff



6-PACK

P11218
6-Pack 500W Quartz Halogen Bulbs, Storage Case
 T3, 500W, 120V, Quartz Halogen, 4-11/16" length, 3/8" dia., 2000 hours.
Lumens: 10,000
Watts: 500
Shpng Wt: 3 lbs
UPC: 7-24281-11218-3



3-PACK

P10174
3-Pack 500W Quartz Halogen Bulbs, Clam Shell
 T3, 500W, 120V, Quartz Halogen, 4-11/16" length, 3/8" dia., 2000 hours.
Lumens: 10,000
Watts: 500
Shpng Wt: 2 lbs
UPC: 7-24281-10174-3



HALOGEN BULB

P10117
500W Quartz Halogen Bulb, Carded
 T3, 500W, 120V, Quartz Halogen, 4-11/16" length, 3/8" dia., 2000 hours.
Lumens: 10,000
Watts: 500
Shpng Wt: 1 lbs
UPC: 7-24281-10117-0



SB 2000

P11045
500W Color Correct Quartz Halogen Bulb, Boxed
 T3, 500W, 120V, Quartz Halogen, 4-11/16" length, 3/8" dia., 2000 hours.
Lumens: 10,000
Watts: 500
Shpng Wt: 1 lbs
UPC: 7-24281-02000-6

Complies with ANSI Standards incorporated by OSHA regulations.

Read and follow any safety related information in or on the product and packaging.

See www.bulldogpower.com or call 800-444-0606 for details

1-year Limited Warranty

Power Tower™ Series—The Brightest, Most Powerful Bull Dogs!



BD 1000MH

P11000W 1000W Single Metal Halide Portable Light Cart

- 1000W weatherproof fixture
- Mast extends from 7', 10', 12.5'
- 8 ft. 14/3 AWG SJTOW
- 5 year limited warranty

Lumen Output: 110,000
Power: 120V-60Hz
Amps: 9.2
Shipping Wt: 165 lbs
UPC: 7-24281-01016-8



BD 2000MH

P12000W 2000W Dual Metal Halide Portable Light Cart

- Dual 1000W weatherproof fixtures
- 30 Amp 125V Locking Plug L5-30
- Mast extends from 7', 10', 12.5'
- 8 ft. 12/3 AWG SJTOW
- 5 year limited warranty

Lumen Output: 220,000
Power: 120V-60Hz
Amps: 18.4
Shipping Wt: 200 lbs
UPC: 7-24281-01017-5



BDW 1000MH

P14000W 1000W Single Metal Halide Port- able Light Cart with Winch

- 1000W weatherproof fixture
- Mast extends from 7' to 12.5'
- 8 ft. 14/3 AWG SJTOW
- 5 year limited warranty

Lumen Output: 110,000
Power: 120V-60Hz
Amps: 9.2
Shipping Wt: 165 lbs
UPC: 7-24281-14000-1



BDW 2000MH

P16000W 2000W Dual Metal Halide Port- able Light Cart with Winch

- Dual 1000W weatherproof fixtures
- 30 Amp 125V Locking Plug L5-30
- Mast extends from 7' to 12.5'
- 8 ft. 12/3 AWG SJTOW
- 5 year limited warranty

Lumen Output: 220,000
Power: 120V-60Hz
Amps: 18.4
Shipping Wt: 200 lbs
UPC: 7-24281-16000-9



MH 1000WB

**P100817
1000W Metal Halide Bulb** for the Rec-
tangle P11000W, P12000W,
P14000W, & P16000W. BT37, 1000W,
Metal Halide, Mogul Screw (E39),
Operating Position: U (universal burn-
ing position), Fixture Type: Enclosed,
ANSI No. M47, Lumens: 110,000,
CRI: 65.

Shipping Wt: 3 lbs
UPC: 7-24281-10817-9

DUAL POWER OPTIONS:

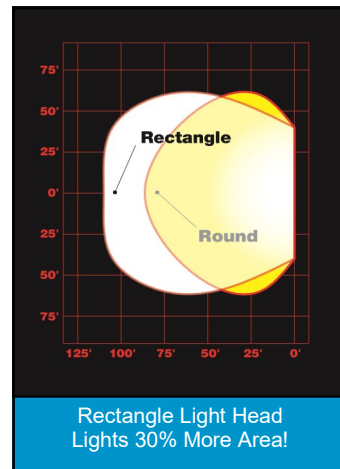
- 1,000 Watt models plug into any 15 Amp, 120 Volt power source
- 2,000 Watt models require a 30 Amp, 120 Volt power source
- 2,000 Watt models have a 30 Amp 125 Volt Locking Plug L5-30



Shown in Transport Mode.

Compact Enough to go
Anywhere!

Only 30" High!



**ALSO SEE OUR 45,000 LUMEN
300W LED PORTABLE LIGHT
CART, PAGE 36**

Read and follow any
safety related information
in or on the product and
packaging.

Complies with ANSI Standards
incorporated by OSHA regulations.

5-year Limited Warranty
See www.bulldogpower.com or
call 800-444-0606 for details

Item #	Description	Page #	Item #	Description	Page #	Item #	Description	Page #
32	+2" Hardwood Flat Seam Roller, DB	31	465	+1-1/8" Flex Putty Knife, Tang Driven	10	819	Blade Sharpening File	13
96	64 oz. No Pock!™ 4-Pack	29	466	+3" Stiff Scraper, Tang Driven	10	824	+6 MM (5/8") Carbide 100X® Round Blade	12
100	+3-1/2" Glass Scraper	16	474	+2-Way Smoother	30	828	22 MM (7/8") Carbide 100X® Triangle Blade	12
101	Mini Glass Scraper/Razor Blade Holder in Bucket	16, 32	490	Razor Knife, Wood Handle	31	901	6" Flex Plastic Broad Knife	10
102	Bucket of Blades, 50 Tucks in a Bucket	16, 32	495	2-Way Smoother	30	902	1-1/2" Flex Plastic Putty Knife	10
109	100 Bulk Razor Blades	16	498	9" Plastic Smoother	30	903	3" Flex Plastic Putty Knife	10
114	Mini Glass Scraper/Razor Blade Holder Carded	16	502	1-1/4" Bent Putty Knife, Stainless Steel	11	904	2" Flex Plastic Putty Knife	10
102395	Mini Glass Scraper/Razor Blade Holder Bagged	16	503	3/4" Stiff Putty Knife, Chisel Edge	11	905	4" Flex Plastic Putty Knife	10
116	13 Point 9MM Snap-Off Blades	17	504	3/4" Full Flex Putty Knife	11	908	3" V-Notch Plastic Spreader	10,29
117	13 Point 9MM Ergo Snap-Off Blade Knife	17	543	5 Gallon Plastic Bucket	21	909	3" Square-Notch Plastic Spreader	10,29
119	8 Point 18MM Ergo Snap-Off Blade Knife	17	550	Plastic 5 Qt Bucket	21	976	4" x 9" x 5/8" Rubber Float	29
120	8 Point 18MM Snap-Off Blades	17	556	Plastic Pail Opener	20	996	+Tile Grout Spreader	29
129	+10 Single Edge Razor Blades in Dispenser	16	566	Safety 1st™ Self-Retracting Utility Knife	17	1039	Painter's 6-in-1 Countertop Display	33
138	Glass Cutter	19	572	Mini Brush Set	22	1052	ProCut® Rasp 'N' Knife® Bucket Display, 10/Bucket	17, 32
142	Glazier Push Points, size # 7	19	581	Vinyl Wallcovering Set	30	1081	180 Line Tool Display	33
144	Aluminum Lid Cutter/Opener/Closer	20	590	5" HD Scraper, 12" Handle	15	1092	900 Line Display	33
148	3/4" Outside Bull Nose Corner Trowel	27	591	5" HD Scraper, 43.5" Handle	15	5687	Lectric® Wall Steamer, UL Listed	31
180	1-1/4" Stiff Putty Knife, Carbon Steel	10	595	5" Scraper Blades, 5/Card	15	5791	Clear Bucket for Bucket Tree	32
181	3" Stiff Scraper, Carbon Steel	10	599	5" Scraper Blades, 50/Bulk	15	6473	Spring Kit for # 10770 & 10771	23
182	1-1/4" Stiff Putty Knife, Carbon Steel	10	601	1-1/4" Chisel Putty Knife, Rosewood Handle	8	6476	Wing Bolt Kit for # 10770 & 10771	23
183	3" Flex Putty Knife, Carbon Steel	10	604	3/4" Full Flex Putty Knife, Rosewood Handle	8	7090	Nylon Bushing Kit for # 10770 & 10771	23
184	4" Flex Broad Knife, Carbon Steel	10	606	1-1/4" Flex Putty Knife, Rosewood Handle	8	8150	3-Pack Plastic Putty Knives	10
185	5-in-1 Painter's Tool, Carbon Steel	10	608	1-1/2" Flex Putty Knife, Rosewood Handle	8	10000	Paint Can Opener, 2/card	20
186	6" Flex Broad Knife, Carbon Steel	10	609	1-1/2" Stiff Putty Knife, Rosewood Handle	8	10011	1-5 Gallon Paint/Epoxy Mixer, 18-3/4" Long Shaft, 3/8" Drill	20
192	8" Blue Steel Taping Knife	27	610	2" Flex Putty Knife, Rosewood Handle	8	10016	22 MM (7/8") Triangle Carbide 100X® Soft Grip Scraper	12
193	10" Blue Steel Taping Knife	27	614	3" Flex Putty Knife, Rosewood Handle	8	10017	50MM(2") Carbide 100X® Soft Grip Scraper w/o Knob	12
194	12" Blue Steel Taping Knife	27	615	3 Stiff Scraper, Rosewood Handle	8	10018	50MM(2") Carbide 100X® Soft Grip Scraper w/ Knob	12
196	14" Stainless Steel Heli-Arc Mud Pan	29	618	4" Flex Broad Knife, Rosewood Handle	8	10019	60MM(2-3/8") Carbide 100X® Soft Grip Scraper w/o Knob	12
197	12" Stainless Steel Heli-Arc Mud Pan	29	620	5" Flex Broad Knife, Rosewood Handle	8	10020	60MM(2-3/8") Carbide 100X® Soft Grip Scraper w/ Knob	12
206	12" Galvanized Mud Pan	29	621	1-1/4" Full Flex Putty Knife, Rosewood Handle	8	10024	2 Pack Brass Mini Brush	22
207	12" Stainless Steel Mud Pan	29	622	6" Flex Broad Knife, Rosewood Handle	8	10025	2 Pack Stainless Steel Mini Brush	22
214	Adjustable Inside Corner Trowel	27	625	ProCut® Drywall Saw	28	10031	Super Soft Knee Pads	19
218	Pole Sander & Pole	28	627	1-1/2" Full Flex Putty Knife, Rosewood Handle	8	10040	Extension Legs Kit for #10329	25
221	12" Plastic Mud Pan	29	628	2" Full Flex Putty Knife, Rosewood Handle	8	10049	24" Alum Spray Shield, Adj. Swivel Head, 18" Wood Hdl	19
222	+1" Plastic Flat Seam Roller, DB	31	633	3" Full Flex Putty Knife, Rosewood Handle	8	10050	36" Alum Spray Shield, Adj. Swivel Head, 18" Wood Hdl	19
229	Pro HD Hand Sander	28	635	4" Full Flex Broad Knife, Rosewood Handle	8	10053	36" Alum Spray Shield, 18" Plastic Hdl	19
232	+2" Plastic Flat Seam Roller, DB	31	636	5" Full Flex Broad Knife, Rosewood Handle	8	10056	5 Quart Measuring Container	21
250	Wallcovering Perforator	31	637	6" Full Flex Broad Knife, Rosewood Handle	8	10059	5 Quart Container Lid	21
256	Pole Sander Head	28	657	6" Easy Reach™ Bent Scraper, Thd Handle	14	10090	Leg with Rubber Pad Attached for #10329	25
260	Wire Paint Can Opener	20	691	4" Big Blade Scraper, 5" Handle	15	10100	Utility Scraper w/ 3 Blades	14
262	Steel Extension Pole 4' - 6.5'	18	693	4" Big Blade Scraper, 48" Handle	15	10121	5 Gallon Paint Mixer, 15-3/4" Long Shaft, 3/8" Drill	20
267	14" Galvanized Mud Pan	29	695	4" Big Blade Scraper Blades, 5/Card	15	10125	48" Aluminum Spray Shield, 18" Plastic Hdl	19
269	Brush Comb & Roller Cleaner	21	698	4" Big Blade Scraper Blade Disp, 10 cds of 10 blds	15	10127	Rubber Foot Pad for #10329	25
279	Brush and Roller Cleaner	21	699	8" Big Blade Scraper Blades, 100/Bulk	15	10144	4" Mexican Heritage Flex Broad Knife	7
305	24" Plastic Spray Shield, 18" Plastic Handle	19	708	1-3/4" PistolGrip™ Scraper w/ Knob, 4-Edge	13	10145	5" Mexican Heritage Flex Broad Knife	7
336	Rubber Sanding Block	28	709	2-1/2" PistolGrip™ Scraper w/ Knob, 4-Edge	13	10146	6" Mexican Heritage Flex Broad Knife	7
340	1 Gallon Paint Mixer, 22-3/4" long shaft, 1/2" drill	20	711	1-3/4" 4-Edge Blades, 2/Card	13	10160	Rplcmnt Ext Leg Braces/Step for #10040, 2 ea	25
341	5 Gallon Paint Mixer, 2-3/8" Spiral, 15-3/4" long shaft, 3/8" drill	20	712	2-1/2" 4-Edge Blades, 2/Card	13	10173	PROGRIP® 8-in-1 Countertop Display	4, 33
343	Drywall Compound Mixer	20	731	1-3/4" PistolGrip™ Scraper w/o Knob, 4-Edge	13	10179	31" Cardboard for Spray Shield Holder	19
345	+Mixer, Twin Propeller Blades	20	732	+2-1/2" PistolGrip™ Scraper w/o Knob, 4-Edge	13	10187	Plastic Spray Shield Holder	19
352	ProCut® Rasp 'N' Knife®	17	741	2-1/2" Scraper, 2-Edge	13	10189	Mexican Heritage 6-in-1	7
356	Safety 1st™ Utility Scraper	16	742	1" Scraper, 2-Edge	13	10199	PROGRIP® 6-in-1 Countertop Display	4, 33
360	Utility Blades	16	746	6" Drywall Blue Steel Taping Knife	26	10225	EZ-Stride® Step-Up Bench 24"	24
366	+Top Trigger Utility Knife	17	748	8" Drywall Blue Steel Taping Knife	26	10226	EZ-Stride® Step-Up Bench 29"	24
379	5-in-1 Painter's Tool, Rosewood Handle	8	750	10" Drywall Blue Steel Taping Knife	26	10227	EZ-Stride® Step-Up Bench 35"	24
380	Roller-Brush Cleaner	21	752	12" Drywall Blue Steel Taping Knife	26	10228	EZ-Stride® Step-Up Bench 46"	24
387	Bent Burn-Off Scraper, Long Handle	14	758	8" Drywall Stainless Steel Taping Knife	26	10232	Side Pole Kit 24" for #10771	23
393	3" Plastic Refinishing Tool	14	760	10" Drywall Stainless Steel Taping Knife	26	10233	Side Pole Kit 18" for #10770	23
395	Double Ended Window Tool	19	762	12" Drywall Stainless Steel Taping Knife	26	10238	Leg Support Cuff Kit for #10770 & 10771	23
397	3" Easy Reach™ Bent Scraper, Thd Handle	14	790	4" Strip 'N' Clean™ Scraper, 12" Handle	15	10239	Upper Side Pole Clamping Kit for #10770 & 10771	23
398	3" Easy Reach™ Scraper, Thd Handle	14	791	4" Strip 'N' Clean™ Scraper, 18" Handle	15	10263	Brush Extension	19
411	Swivel Pot Hook	19	792	4" Strip 'N' Clean™ Scraper, 43.5" Handle	15	10296	Foot Pad Kit for EZ-Stride® Step-Up Benches	24
412	Handy Pot Hooks, 2/card	19	793	4" Strip 'N' Clean™ Blade, 1/Card	15	10297	24" & 29" Spreader Bar Kit for #10225 & 10226	24
416	1" Plastic Flat Seam Roller	31	794	6" Strip 'N' Clean™ Blade, 1/Card	15	10298	35" & 46" Spreader Bar Kit for #10227 & 10228	24
419	36" Aluminum Spray Shield, 18" Plastic Hdl	19	795	+8" Strip 'N' Clean™ Blade, 1/Card	15	10300	Soft Grip Safety 1st™ Scraper, w/ 5 Blades	16
422	1" Plastic Flat Seam Roller, SB	31	BD10360	Bull Dog™ 6" HD Floor Scraper, 49" Hdl	15	10309	15-in-1 Painters Tool	9
423	+1" Wood Flat Seam Roller, DB	31	803	50 MM (2") Carbide 100X® Scraper w/o Knob	12	10314	Hinge Kit for EZ-Stride® Step-Up Benches	24
428	12" Paint Guide	20, 31	804	50 MM (2") Carbide 100X® Scraper w/ Knob	12	10320	1-1/2" Flex Putty Knife, Carbon Steel	11
429	+Razor Knife, Wood Handle	31	805	+5" Pivot Head Paint Scraper	13	10321	5-in-1 Painter's Tool, Carbon Steel, 1.2mm=.047"	11
431	Triple Edge Guide	20, 30	103102	+5" 2-Edge Blades, Bulk 50/box	13	10322	3" Flex Putty Knife, Carbon Steel	11
432	15" Paint Guide	20	806	60 MM (2-3/8") Carbide 100X® Scraper w/o Knob	12	10323	3" Stiff Scraper, Carbon Steel	11
433	23" Pt Guide & Wallcovering Tool	20, 31	807	60 MM (2-3/8") Carbide 100X® Scraper w/ Knob	12	10324	4" Broad Knife w/ Hammer Cap™, Carbon Steel	11
434	10" Paint Guide	20	808	22 MM (7/8") Carbide 100X® Scraper w/o Knob	12	10326	6" Broad Knife w/ Hammer Cap™, Carbon Steel	11
442	Patcher	10	809	+2-1/2" Pivot Head Paint Scraper	13	10327	1-1/2" Stiff Putty Knife, Carbon Steel	11
443	9-1/2" Pry Bar	20	810	1" 2-Edge Blades	13	10328	1-1/4" Stiff Chisel Edge Putty Knife, Carbon Steel	11
447	1 Gallon 2" Plastic Paint Mixer	20	811	1-3/4" 2-Edge Blades	13	10329	EZ-Stride® Drywall Bench	25
449	Wallcovering Sponge	31	812	2-1/2" 2-Edge Blades	13	10330	1 Gallon Plastic Paint Mixer	20
456	6" Pasting Brush	30	813	50 MM (2") Double Edge Carbide Blade	12	10331	5 Gallon Plastic Paint Mixer	20
457	Texture-Masonry Brush	29	814	60 MM (2-3/8") Double Edge Carbide Blade	12	10337	Painter's Series Display	11,34
			816	60MM (2-3/8") Double Edge Carbide Blades, 10/Pk	12			
			819	50 MM (2") Double Edge Carbide Blades, 10/Pk	12			

Items shaded in Blue denote Made in the USA



Item #	Description	Page #	Item #	Description	Page #	Item #	Description	Page #
10345	Replacement Step for #10329	25	10871	PROGRIP® 8" Blue Steel Soft Grip Taping Knife	26	11250	+1000 Lumen 10W Rechargeable LED Worklight	37
10350	Painter's Pry Bar	20	10872	PROGRIP® 10" Blue Steel Soft Grip Taping Knife	26	11255	2400 Lumen 20W Portable LED Worklight	39
10351	Painter's Knife	5	10873	PROGRIP® 12" Blue Steel Soft Grip Taping Knife	26	11257	250 Lumen 3W Magnetic Base Mini LED	40
10389	HD Caulk Remover	11	10876	+Brush and Roller Cleaner	21	11264	70 Lumen 3W LED Headlamp, 10/ Ctr Disp	41
10419	10" HD Floor Scraper, 49" Handle	15	10879	PROGRIP® 14" Blue Steel Soft Grip Taping Knife	26	11265	160/70 Lumen 3W LED Headlamp, 8/Ctr Disp	41
10423	10" HD Blade for #10419	15	10884	+PROGRIP® 6" Blue Steel Soft Grip Taping Knife	26	11266	200 Lumen 3W Clip-On LED Headlamp, 12/Ctr Disp	41
10458	Hopper Gun	18	10889	7-in-1 Spray Wrench, 10/Counter Display	4,33	11269	Strainer Bag Squeegee and Pail Scoop	20
10459	Replacement Handle, Pin & Clip for #10458	18	10891	+Grunt® 1-Gallon Paint Can Carrier , Carded	21	11277	Soft Grip Linoleum Knife with Cover	28
10460	Replacement Nozzles & Retaining Ring for #10458	18	10897	+Grunt® 1-Gallon Paint Can Carrier , Labeled	21	11281	+1200 Lumen Battery Powered LED Worklight	37
10461	Replacement O Ring for #10458	18	10907	4" Glass & Tile Scraper, w/2 Blades	16	11282	3500 Lumen 30W Portable LED Worklight	39
10462	Adjustable Knob Assembly for #10458	18	10908	Glass & Tile Scraper Set	16	11314	4" Glass & Tile Replacement Blade	16
10463	Replacement Gun Needle Kit for #10458	18	10916	6" Painter's Taping Knife SS	26	11315	3-Pack NYLON Mini Brush Set	22
10481	+Soft Grip Mini Wire Brush Set	22	10918	8" Painter's Taping Knife SS	26	11359	4"x4" Drywall Repair Patch	27
10482	Soft Grip 14" Steel Wire Brush w/ Scraper	22	10920	10" Painter's Taping Knife SS	26	11360	8"x8" Drywall Repair Patch	27
10483	Soft Grip 14" Stainless Wire Brush w/ Scraper	22	10922	12" Painter's Taping Knife SS	26	11361	2-Pack Plastic Joint Knife Set	27
10485	Soft Grip 12" Steel Wire Brush w/ Scraper	22	10947	Inside Corner Trowel	27	11362	Cardboard Spray Shield Holder	19
10486	Soft Grip 10" Shoe Handle Wire Brush	22	10948	Outside Corner Trowel	27	11373	High Power LED Headlamp 300/90	41
10492	Soft Grip Wide Brass Stripper Brush	22	10949	Inside Bull Nose 3/4" Trowel	27	11378	3500 Lumen LED Worklight	39
10495	15-in-1 Countertop Display	9, 33	10954	1200 Lumen Rechargeable LED Pro Grade Wklt	37	11379	7000 Lumen LED Worklight	39
10500	Soft Grip Safety 1st™ Scraper, w/ 1 Blade	16	10955	3000 Lumen LED Professional Grade Worklight	37	11441	4000 Lumen LED Rechargeable Worklight	42
10524	45" Flexible Hopper Boot	28	10971	PROGRIP® American Craftsman 5-in-1, RWB	4,7,33	11443	2000 Lumen LED Worklight	42
10610	+Tampico Masonry Brush	19	10984	No Pock! 4 oz., 9/Counter Display	29,33	20147	+12" Plastic Paint Guide	20
10628	12" x 9" Polystyrene Pt Color Test Sheet	18	10997	2" Stiff Scraper, Hammer Cap™ , Carbon Steel	11	20630	3-in-1 Paint Tote	21
10629	18" x 24" Polystyrene Pt Color Test Sheet	18	10998T	+800 Lumen 10W Rechargeable LED Worklight	37	20631	Transparent Replacement Liners	21
10630	12" x 9" Foam Board Pt Color Test Panel	18	10998U	850 Lumen Rechargeable LED Worklight	42	34016	Graining Tool 1/4" Round	19
10634	Safety Locking Collar, for #10329	25	11001T	+1300 Lumen 20W LED Worklight	38	34436	Sanding Block, Carded in a Cut Carton	28
10736	3" SS Straight Blade Pole Scraper, Thd Hdl	14	11011	PROGRIP® & Scraper Assortment A	34	34690	Paint and Wall Scraper, Threaded Handle	15
10737	3" SS Bent Blade Pole Scraper, Thd Hdl	14	11012	Putty Knife & Scraper Assortment B	34	34709	4-Edge Paint Scraper	13
10738	4" SS Straight Blade Pole Scraper, Thd Hdl	14	11013	Putty Knife & Scraper Assortment C	35	3410108	3-in-1 Stripping Brush	22
10739	4" SS Bent Blade Pole Scraper, Thd Hdl	14	11021	4-Piece Wire Brush Set	22	3410020	60MM (2-3/8") Carbide Scraper, w/ Knob	12
10740	4" SS Flex Broad Knife, Rosewood Handle	9	11022	1-1/4" Stiff Scraper, Hammer Cap™ , Carbon Steel	11	3410486	10.25" Steel Shoe Handle Wire Brush,4x16,	22,35
10741	6" SS Flex Broad Knife, Rosewood Handle	9	11025	Wire Brush Display	35	3410487	Steel Wire Scrub Brush W/ Scraper, Threaded	22,35
10742	1-1/4" SS Stiff Putty Knife, Chisel Edge, Rosewood	9	11026	+5-in-1 Painter's Tool, Carbon Steel, 1.8mm=.071"	11	3410491	Nylon Stripper Brush, 5x11, labeled	22
10743	3" SS Straight Burn-Off Scraper, 7-3/4" Wood Hdl	14	11048	+Painter's Series 10-N-1	11	3410493	S.S. Stripper Brush, 5x11, labeled	22
10744	3" SS Bent Burn-Off Scraper, 4-1/2" Wood Hdl	14	11049	100 H.D. Utility Blades, .025", 20 Individual 5 packs	16	3410496	Lightweight Pole Sander, Plastic	28
10745	5-in-1 SS Painter's Tool, Rosewood Handle	9	11065	+1300 Lumen Tripod 20W LED Worklight, 3'-5"	38	3410497	Lightweight Hand Sander, Plastic	28
10746	1-1/2" SS Flex Putty Knife, Rosewood Handle	9	11066	+2600 Lumen Tripod Twin, Dual 20W LED's, 3'-5"	38	40124	4" American Pride Flex Broad Knife	7
10747	1-1/2" SS Stiff Putty Knife, Rosewood Handle	9	11067	Tripod Stand for LED's	37,38	40125	5" American Pride Flex Broad Knife	7
10748	3" SS Stiff Scraper, Rosewood Handle	9	11079	8" 1/8-Notched Plastic Adhesive Spreader	10, 29	40126	6" American Pride Flex Broad Knife	7
10749	3" SS Flex Putty Knife, Rosewood Handle	9	11080	8" Plastic Taping Knife	10, 27	90101	PROGRIP® 1-1/4" Stiff Chisel Putty Knife	4
10750	1-1/4" SS Stiff Putty Knife, Rosewood Handle	9	11081	Wood Handle 13-5/8" Wire Brush w/Scraper,3x19	22	90106	PROGRIP® 1-1/4" Flex Putty Knife	5
10751	1-1/4" SS Flex Putty Knife, Rosewood Handle	9	11082	Wood Handle 13-5/8" Wire Brush, 3x19 row	22	90107	PROGRIP® 1-1/4" Stiff Putty Knife	4
10752	2" SS Stiff Putty Knife, Rosewood Handle	9	11083	Wood Handle 10" Wire Brush w/Scraper,4x16 row	22	90108	PROGRIP® 1-1/2" Flex Putty Knife	5
10753	2" SS Flex Putty Knife, Rosewood Handle	9	11084	Wood Handle 10" Wire Brush, 4x16 row	22	90109	PROGRIP® 1-1/2" Stiff Putty Knife	4
10756	36" H.D. Spray Shield w/ 1/2" Bent Edge	19	11085	5-Gallon Metal Paint Grid	21	90110	PROGRIP® 2" Flex Putty Knife	5
10770	Strap-N-Stride™ Alum Stilts 18"-30"	23	11086	9" Plastic Roller Tray	21	90111	PROGRIP® 2" Stiff Putty Knife	4
10771	Strap-N-Stride Alum Stilts 24"-40"	23	11087	9" Metal Roller Tray	21	90114	PROGRIP® 3" Flex Putty Knife	5
10773	Foot/Floor Plate Kit for # 10770 & 10771	23	11088	10" Plastic Taping Knife	10, 27	90115	PROGRIP® 3" Stiff Scraper	4
10774	Floor Pad Kit for # 10770 & 10771	23	11090	Painter's Series Pry Bar, w/Hammer Cap™	11,20,34	90118	PROGRIP® 4" Flex Broad Knife	5
10775	Heel Cup Kit for # 10770 & 10771	23	11094	3-in-1 Paint Can Clip	21, 32	90119	PROGRIP® 4" Stiff Broad Knife	4
10776	Strap Kit for # 10770 & 10771	23	11102	8-in-1 Painter's Tool, Black Blade, 10/Ctr Disp	4, 33	90120	PROGRIP® 5" Flex Broad Knife	5
10783	Bolt/Bearing Overhaul Kit for # 10770 & 10771	23	11104	Paint Can Carrier with Magnet & Opener	21	90122	PROGRIP® 6" Flex Broad Knife	5
10798	8 Point 18MM Economy Snap-Off Blade Knife	17,32	11123	3-Pack MULTI Mini Brush Set	22	90124	PROGRIP® 4" Flex Broad Knife, Hammer Cap™	5
102380	8 Point 18MM Economy Snap-Off Blade Knife	17	11124	3-Pack BRASS Mini Brush Set	22	90125	PROGRIP® 5" Flex Broad Knife, Hammer Cap™	5
10799	13 Point 9MM Economy Snap-Off Blade Knife	17,32	11125	3-Pack STAINLESS STEEL Mini Brush Set	22	90126	PROGRIP® 6" Flex Broad Knife, Hammer Cap™	5
102381	13 Point 9MM Economy Snap-Off Blade Knife	17	11135	Drywall Sanding Sponge	28	90127	PROGRIP® 1-1/2" Full Flex Putty Knife	6
10801	12-in-1 Folding Knife, The Painter's Blade®	9	11159	3-in-1 Caulk Tool	22	90128	PROGRIP® 2" Full Flex Putty Knife	6
10805	8 Point 18MM Snap-Off Blades, 50/Plastic Tube	17	11160	Soft Grip Steel Wire Brush w/Scraper,6x10 row	22	90131	PROGRIP® 1-1/4" Full Flex Putty Knife	6
10806	13 Point 9MM Snap-Off Blades, 50/Plastic Tube	17	11163	50 Pack Single Edge Razor Blades in Dispen	16	90133	PROGRIP® 3" Full Flex Putty Knife	6
10807	Utility Blades, 50/Plastic Dispenser	16	11164	+3600 Lumen 40W Double Head LED Floor Stand	38	90135	PROGRIP® 4" Full Flex Broad Knife	6
10808	Utility Blades, 10/Plastic Dispenser	16	11172	Bucket Scoop	26	90137	PROGRIP® 6" Full Flex Broad Knife	6
10809	+Utility Hook Blade, 5/Card	16	11177	220 Lumen 3W 4-in-1 LED Worklight,6/Ctr Disp	40	90173	PROGRIP® 8-in-1 HammerCap™	4
10810	Bucket Tree Assortment	32	11179	220 Lumen 3W Pocket LED Worklight,12/Ctr Disp	40	90175	PROGRIP® 3" Stiff Scraper, Hammer Cap™	4
10811	Toe Strap Kit for # 10770 & 10771	23	11181	Auto Lock & Auto Retractable Utility Knife	17	90189	PROGRIP® 5-in-1 Painter's Tool	4
10812	Ankle Strap & Buckle Kit for # 10770 & 10771	23	11185	Folding & Locking Zinc Utility Hobby Knife Ctr Disp	17,33	90199	PROGRIP® 6-in-1 Hammer Cap™	4
10813	Ankle Strap Pad Kit for # 10770 & 10771	23	11187	Folding & Locking Plastic Utility Knife Counter Disp	17,33	90660	PROGRIP® 1-1/2" SS Stiff Putty Knife, Hammer Cap™	7
10814	Calf Strap Kit for # 10770 & 10771	23	11213	+1600 Lumen 20W Foldable & Rechargeable LED	37	90662	PROGRIP® 3" SS Stiff Scraper, Hammer Cap™	7
10822	2 Pack, 1-1/4" Flex Putty Knife	10	11215	Paint Project Lifters	19	90663	PROGRIP® 3" SS Flex Putty Knife, Hammer Cap™	7
10824	3" V-Notch ProCut™ Spreader, 2 pack	10,29	11220	Painter's Series Pry Bar, 10/Counter Display	11,33	90664	PROGRIP® 4" SS Flex Broad Knife, Hammer Cap™	7
10827	Grip & Go™ Mud Pan, 10"	29	11221	6" HD Paint & Wall Scraper w/ 24" Handle	15	90665	PROGRIP® 5" SS Flex Broad Knife, Hammer Cap™	7
10829	3 Pack, Flex Putty Knives	10	11222	8" Taping Knife w/ Hammer Cap™, Carbon Steel	11,26	90666	PROGRIP® 6" SS Flex Broad Knife, Hammer Cap™	7
10830	7-in-1 Spray Wrench	4	11223	10" Taping Knife w/ Hammer Cap™, Carbon Steel	11,26	90667	PROGRIP® 4" SS Stiff Broad Knife, Hammer Cap™	7
10831	Wood Paint Paddle	19	11225	6" HD Rplcmt Paint & Wlpr Scraper Blades, 5/tube	15			
10832	Perfect Pass™ Joint Knife	11, 27	11243	13-in-1Painter's Tool, Painter's Series	11			
10833	Dual Blade Paint Scraper	14						
10838	6" Long Nose Pliers	18						
10839	6-in-1 Screwdriver	18						
10840	16" Tape Measure	18						
10841	13 Point 9MM Auto-Retract Snap-Off Knife	17						
10843	Adj. Handle Assembly, for #10329	25						
10844	Folding Hinge Assembly, for #10329	25						
10845	A Frame Leg Holder, for #10329	25						
10846	Perfect Pass™ Countertop Display	11,27,33						
10847	12-in-1 Folding Knife Counter Display	9, 33						
10848	Mexican Heritage 6-in-1 Countertop Display	7, 33						
10858	Rosewood Series Display	8, 35						

Bull Dog Power Products® Lighting 36-45
LED Series—Light Towers/Carts 36
LED Series—Rechargeable 37
LED Series—AC Corded 38-39
LED Series—Battery 40
LED Series—Headlamps 41
LED Series—NEW, Coming Soon 42
Gold Series—Professional Grade Halogen 43
Silver Series—Halogen & Replacement Bulbs 44
Power Towers—Metal Halide Light Carts & Bulb 45

Items shaded in Blue denote Made in the USA



WARNER®

Warner Tools Products

13435 Industrial Park Blvd.
Plymouth, MN 55441

Phone: 763-559-4740 or 800-234-7708

Fax: 800-455-9883 or 877-927-6370

www.warnertool.com

Customer Service: 800-444-0606

customerservice@warnertool.com



by warnertools