



Ultra Security Plus – Electronic Deadbolt

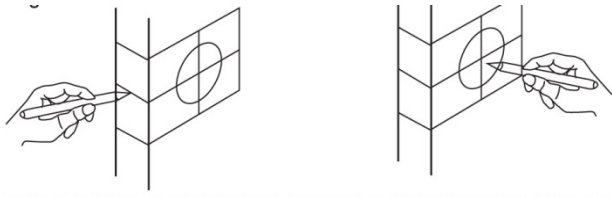
Installation Instructions

<http://www.hberger.com/video-gallery/electronic-deadbolt>

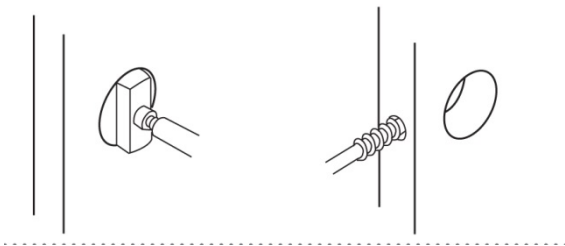
New Installation Lock Location Preparation

(Skip this section if you door has predrilled holes)

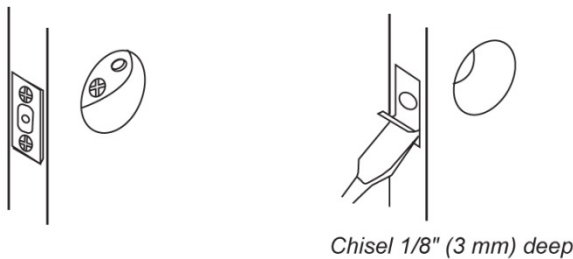
- 1) Mark Door for Drilling
 - a. Use Template Provided to Mark door for drilling with center of lock hole 41" (104.2 cm) from the base of the door. This Hole should be at least 5-1/2" (14 cm) above the center of any existing knob.
 - b. Measure the thickness of your door (1-3/4" is the most common size for exterior doors). Using the Template select 2-3/8" (60mm) or 2-3/4" (70 mm) backset based on your personal preference or location of preexisting knobs. Mark the center location of the knob hole with a pencil. Without removing the paper template mark the center location for the strike hole at the center of the door edge.



- 2) Drilling Holes
 - a. Drill a 2-1/8" (54 mm) hole with a hole saw for the lock body. First slowly drill through from the marked side until the center bit begins to cut through the opposite side of the door. Use this hole as an alignment guide to drill through the door from the second side. This will avoid splintering/damaging of the door surface.
 - b. Drill a 1" (25 mm) hole through the door edge making a clean hole into the void created for the lock body. (See Drawing d.)



- 3) Marking the Jamb hole location
 - a. Close the door and hold it in the closed position and use a pencil or stubby marker inserted through the lock body and into the 1" hole for the latch to mark the position where the strike will hit the door Jamb.
 - b. Drill a 1" (25 mm) hole into the door jamb at the position you have marked. This hole should be a minimum of 1" (25 mm) Deep.
- 4) Mortise Cut the Door Edge and Jamb to accept the Latch and strike flat
 - a. Install the latch into the door edge hole and trace the latch face plate outline onto the door edge.
 - b. Remove the latch and score the traced shape of the latch with a razor knife and then chisel out the marked area 1/8" deep (3 mm) to accept the latch plate flush to the surface
 - c. Repeat this procedure for the Strike on the Jamb of the door



Chisel 1/8" (3 mm) deep

Installing Your Electronic Deadbolt

Step 1 Installing the Deadbolt Latch

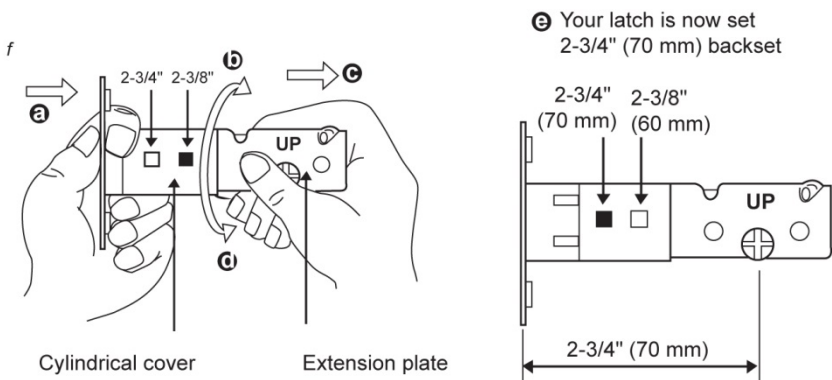
A) Setting the Backset (Dead bolt is shipped with the backset set at 2-3/8")

Measure the backset (Backset is Distance between edge of the door and the center of Lock)

To convert from 2-3/8" (60mm) backset to 2-3/4" (70 mm) backset

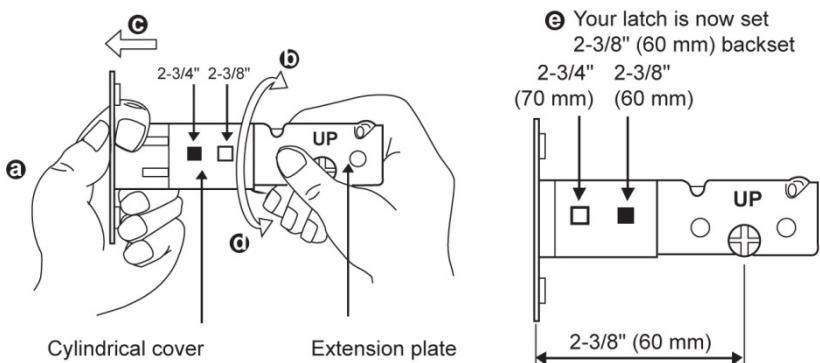
- a. Hole latch with numbers facing up and thumb pressing on the bolt
- b. Rotate the cylinder cover Clockwise

- c. Pull the extension plate all the way out
- d. Rotate the cylinder cover counter clockwise so that the marking aligns with the 2-3/4" position indicator



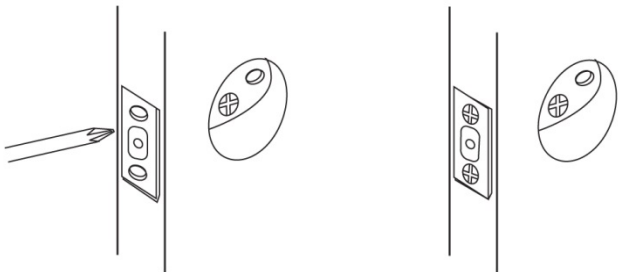
To convert from 2-3/4" (70mm) backset to 2-3/8" (60mm) backset

- a. Hole latch with numbers facing up and thumb pressing on the bolt
- b. Rotate the cylinder cover Clockwise
- c. Push the extension plate all the way in
- d. Rotate the cylinder cover counter clockwise so that the marking aligns with the 2-3/4" position indicator



B) Installing the Deadbolt Latch

- a. Insert Latch into door edge hole with measurements on the body facing up, Cross shaped spindle connector will be at the bottom of the latch.
- b. Make sure the face plate sits flush with the door. Do not force the latch into the mortise flush. Chisel out excess material if necessary for a flush fit.
- c. Using two of the four wood screws provided screw the latch into the door with a hand held screwdriver. Do not over tighten.



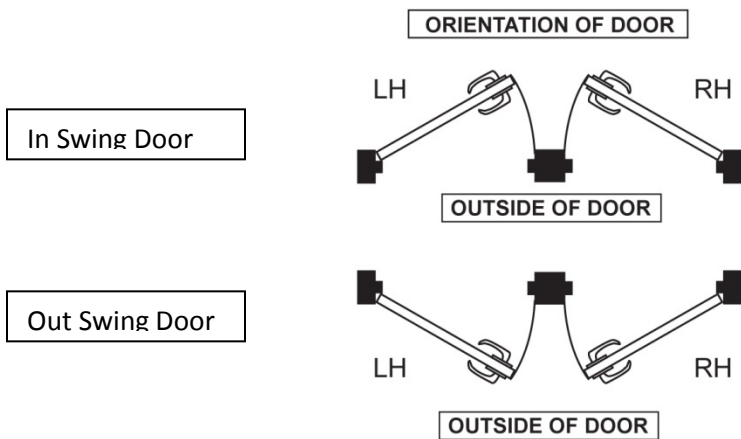
C) Installing the Strike Plate.

- a. Place the strike plate into the Mortise created for it on the door jamb. Do not force the strike into the mortise flush. Chisel out excess material if necessary for a flush fit.
- b. Using two of the four wood screws provided screw the strike into the door jamb with a hand held screwdriver. Do not over tighten.

Step 2 Identifying if your door is Left Hand Hinge or Right Hand Hinge

A) Stand outside the door

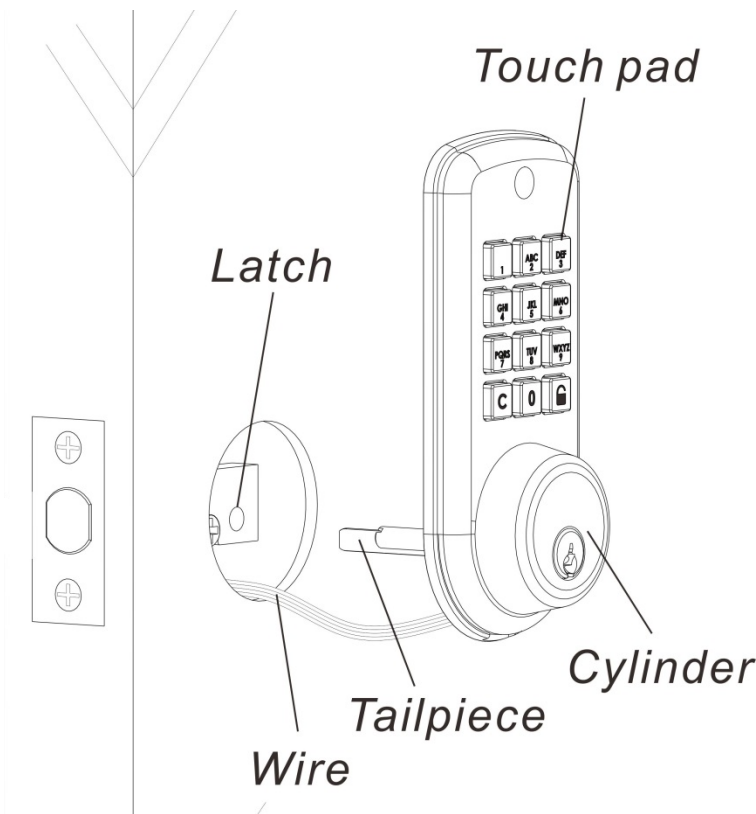
- a. If the hinges are on the left your door is Left Handed
- b. If the hinges are on the right your door is Right Handed



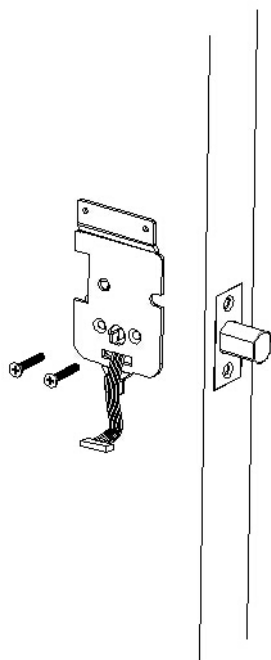
Step 3 Installing the Exterior assembly (Keypad)

Work with the Door Open for easy access

- 1) Unpack the keypad exterior assembly. Use care to not scratch the green circuit board during handling and installation.
- 2) Check that the rubber gasket is properly seated on the lock body
- 3) Insert the key into lock and turn the key to the locked position
 - a. Turn Key fully right for installation on a left hand hinged door
 - b. Turn Key fully left for installation on a right hand hinged door
- 4) Install the lock on the door
 - a. Insert lock face onto the door with the tailpiece going through the latch in the **Vertical** position and the wire passing through the door below the latch.

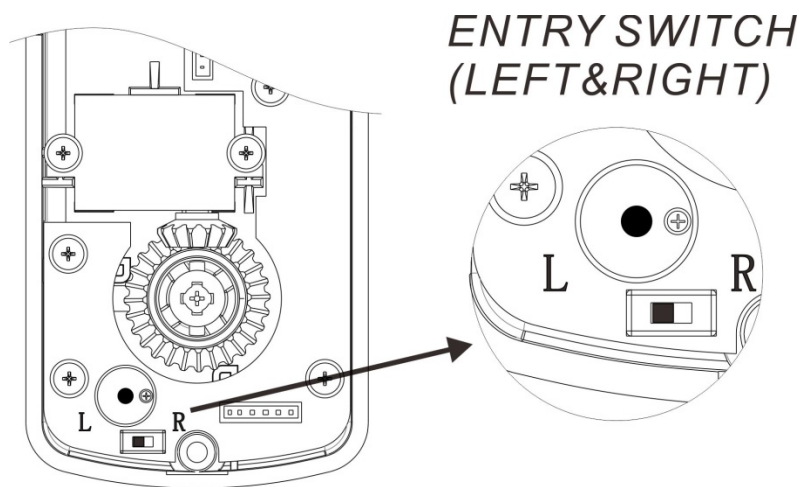


- 5) Securing the Lock to the Door
 - a. From the side marked “This side towards door”, Pass the Control wire through the rectangular slot in the Mounting Plate
 - b. Place Mounting Plate against door with tailpiece passing through the center hole in the three hole set
 - c. Secure the Mounting plate to the lock using the two silver flat head screws in the parts kit
 - d. Hand Tighten with a screwdriver leaving loosely connected
 - e. Check that the gasket is properly aligned and correct as necessary. (See on line video for tips)
 - f. Check vertical alignment of the lock
 - g. Tighten securely with a hand held screwdriver

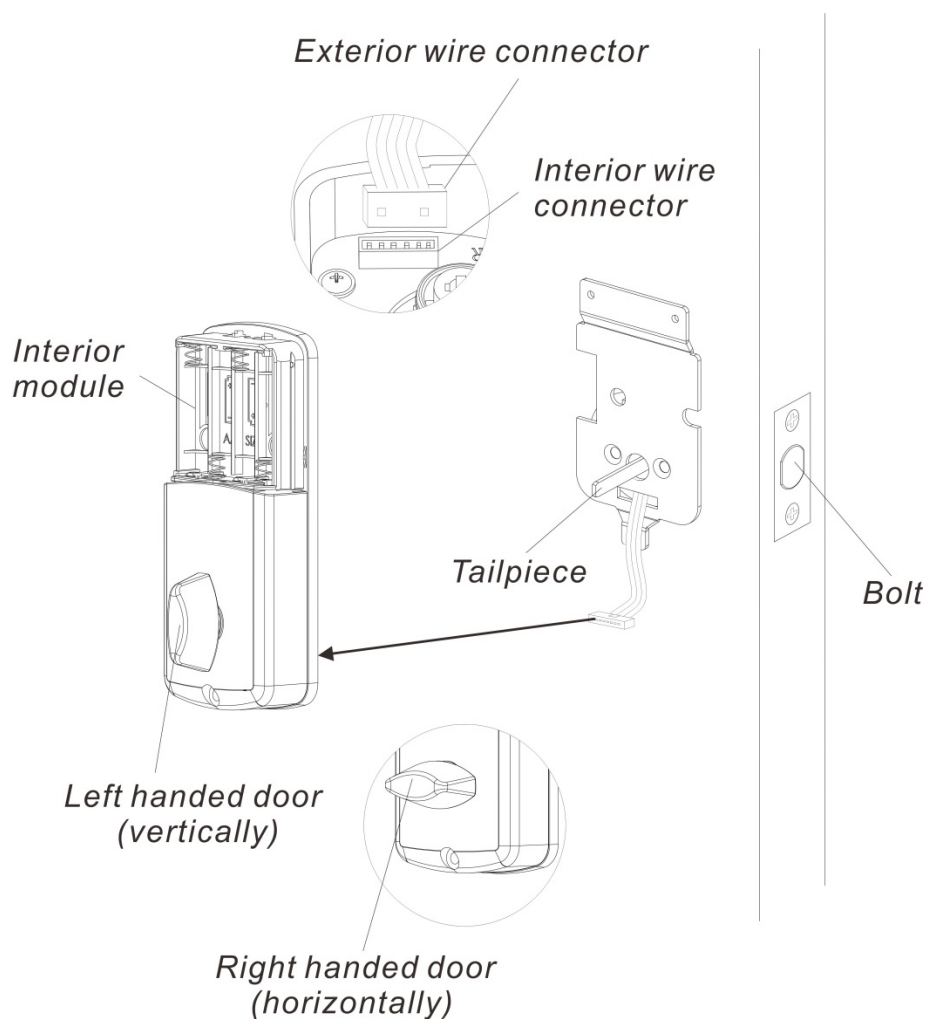


Step 4 Installing the Interior assembly (Keypad)

- 1) Set the electronic Switch for Left or Right Hand door
 - a. Gently move the switch to “L” for Left Hinged Door
 - b. Gently move the Switch to “R” for Right Hinged Door

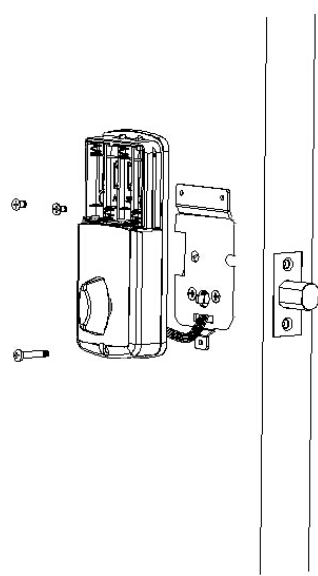


- 2) Attach the connector wire to the interior assembly.
 - a. Use care to attach the wire to the multi pin connector
 - b. Do not force plug onto connector
 - c. The Plug has two alignment tabs on the smooth side of the connector. Red Lines on the Plug and socket should both be in the up direction.
 - d. The plug is inserted with the smooth side up into the connector and pressed into place.
- 3) Turn the Interior knob to Align it with the tailpiece
 - a. The knob goes in the Horizontal position for Left Hand Hinge Doors
 - b. The knob goes in the Vertical position for Right Hand Hinge Doors



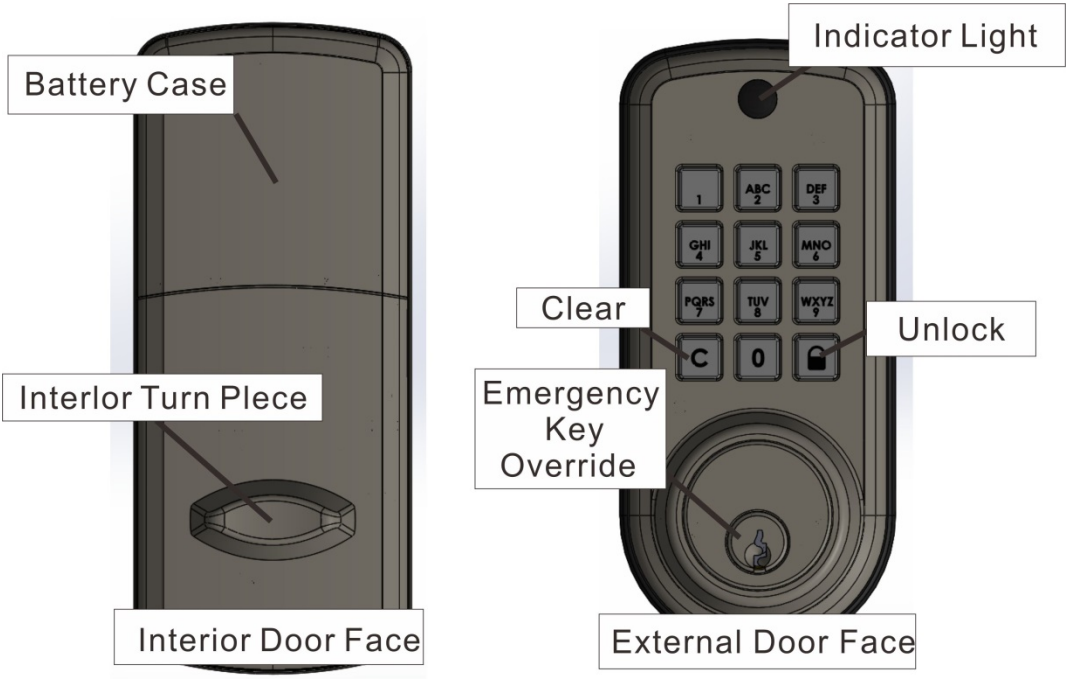
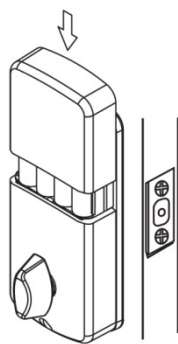
- 4) Place the interior assembly over the Tailpiece and push the assembly against the door

5) Using the 2 Small Flat Head screws and 1 color matched screw attach the interior assembly to the Mounting Plate



6) Insert 4 AA batteries into the battery compartment in the direction noted +/- on the compartment. The Lock will beep to signify that it has received power.

7) Slide the back Cover down into the track on the Lock to cover the batteries



Testing your New Lock

With the Door Open

- 1) Test the Lock using the turn Knob, press knob and turn, bolt should move smoothly
- 2) Test the lock using the Key pad, Press **C** for Lock and then “**1234**” **🔒** to open
- 3) Test the Lock using the Remote controls, Lock and Unlock symbols

Issue	Solution
Latch Working Backwards - Lock opens when lock button or code is pushed or locks when unlock button or code is pushed.	Direction switch is set to incorrect setting. Remove the interior assembly and move the switch to the opposite direction •Check that your switch is set in the correct position Left or Right Hand hinged door If Correct •Rotate Turn knob and reinstall interior assembly retest again while holding interior assembly in place
Interior knob will not turn.	Knob is installed in incorrect position. Remove interior assembly and reposition the interior knob.
Lock will not function electronically.	<ul style="list-style-type: none">• Check that all batteries are fresh• Check for proper polarity (+ -) of all batteries• Check that the control cable is attached to the interior module
Lock gives error signal when opening or locking and deadbolt will not extend or retract completely when completely when door is closed.	Unlock door using key or interior knob. While door is open, check that the deadbolt latch operates smoothly. Check for proper alignment of the strike plate, adjust as needed to assure there is no binding against the deadbolt latch.
Remote controller will not operate the lock	<ul style="list-style-type: none">• Reprogram the remote. (See “Adding a new remote controller” in Programming guide).• Check the battery, replace if necessary.

Go to the Programming Directions to set your personal codes
and make you lock secure.

<http://www.hberger.com/video-gallery/electronic-deadbolt>