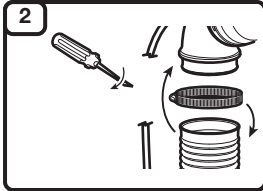


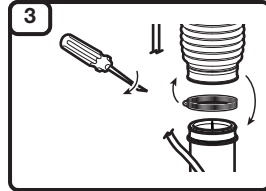


Read the operator's manual thoroughly before operating the unit. Follow all warnings and safety instructions. This fast guide is intended as a reference for users that have already read the operator's manual and are familiar with the necessary safety precautions.

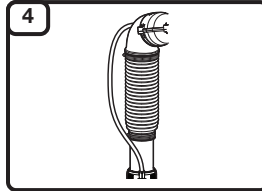


### ASSEMBLY

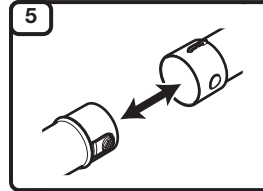
Place the large hose clamp around the large end of the flex tube. Slide the flex tube and hose clamp onto the elbow tube. Tighten the screw on the hose clamp with a flat-head screwdriver.



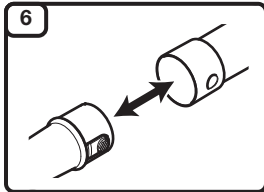
Place the small hose clamp around the small end of the flex tube. Slide the flex tube and hose clamp onto the upper blower tube. Tighten the screw on the hose clamp with a flat-head screwdriver.



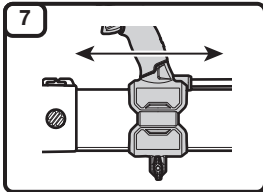
**NOTE:** Keep the cables straight. Make sure that the cables are not wrapped around the flex tube.



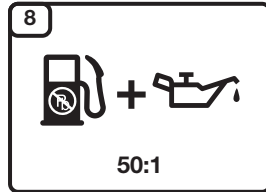
Align the tab on the lower blower tube with the hole on the upper blower tube. Push the lower blower tube into the upper blower tube until the tab locks securely into the hole.



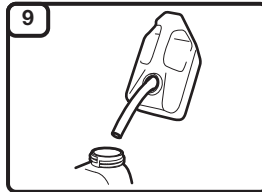
Align the tab on the nozzle with the hole on the lower blower tube. Push the nozzle into the lower blower tube until the tab locks securely into the hole.



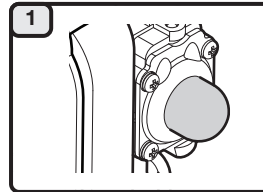
Put the unit on your back. Loosen the wing nut (counterclockwise). Move the throttle grip to a comfortable location. Tighten the wing nut securely (clockwise). Do not operate the unit with a loose throttle grip. Take the unit off your back.



Mix thoroughly in a separate fuel can:  
 - 2.6 fl. oz. of 2-cycle engine oil  
 - 1 gallon of fresh unleaded gasoline (**less than 30 days old**)  
**NOTE:** Do not mix directly in the unit fuel tank.

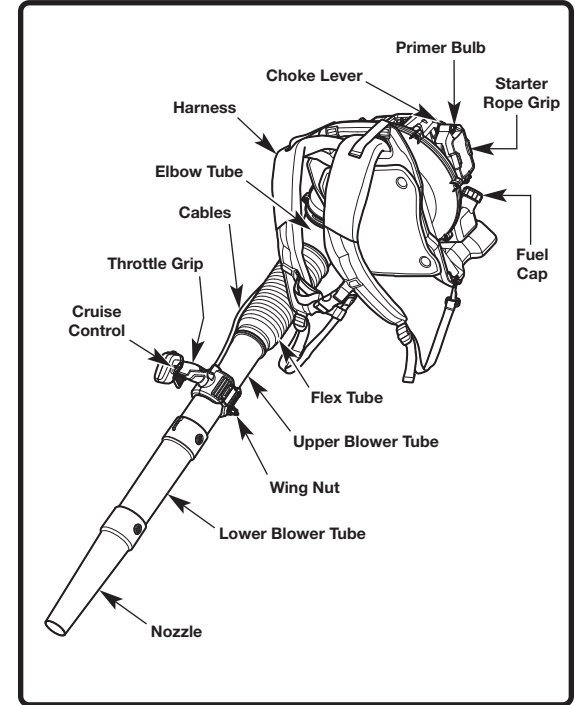


Position the unit with the fuel cap facing up. Slowly remove the fuel cap. Fill the fuel tank. Reinstall the fuel cap. Move the unit at least 30 ft. (9.1 m) from the fuel container and the fueling site before starting the engine.



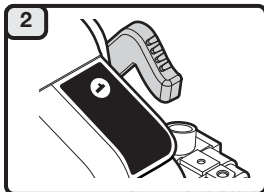
### STARTING

Slowly press and release the primer bulb **10 times**, or until fuel is visible.

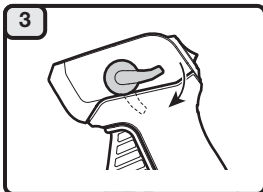


### ASSEMBLY TOOLS REQUIRED

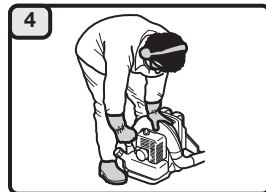
- Flat-head screwdriver



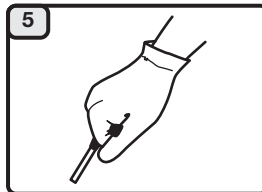
Move the choke lever to **Position 1 (start)**.



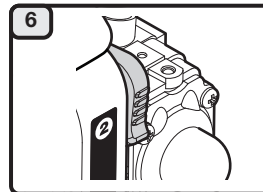
Move the cruise control to the **HI (fast)** position.  
**NOTE: Keep the cruise control in the HI (fast) position for ALL further steps.**



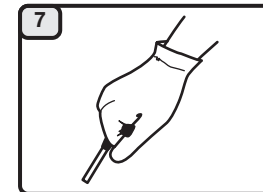
Stand in the starting position.



Pull the starter rope with a controlled and steady motion **5 times**.



Move the choke lever to **Position 2 (run)**.



Pull the starter rope with a controlled and steady motion until the unit starts. Allow the engine to warm up for 60 seconds. The unit may be used during this time. Put on the harness.

### DIDN'T START?

Repeat the starting instructions. If the unit still fails to start, refer to the operator's manual for additional starting and troubleshooting information.



**IMPORTANT: READ THE OPERATOR'S MANUAL THOROUGHLY AND FOLLOW THE SAFE OPERATION PRACTICES WHILE OPERATING THE UNIT.**

Lea la traducción en Español en el manual.