

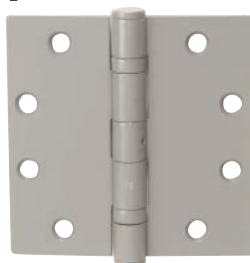


H4545 SERIES

4-1/2" x 4-1/2" Square Corner Hinges



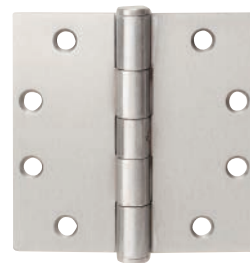
US26D / Satin Chrome



USP / Prime Coat



US3 / Polished Brass



US32D / Satin Stainless Steel

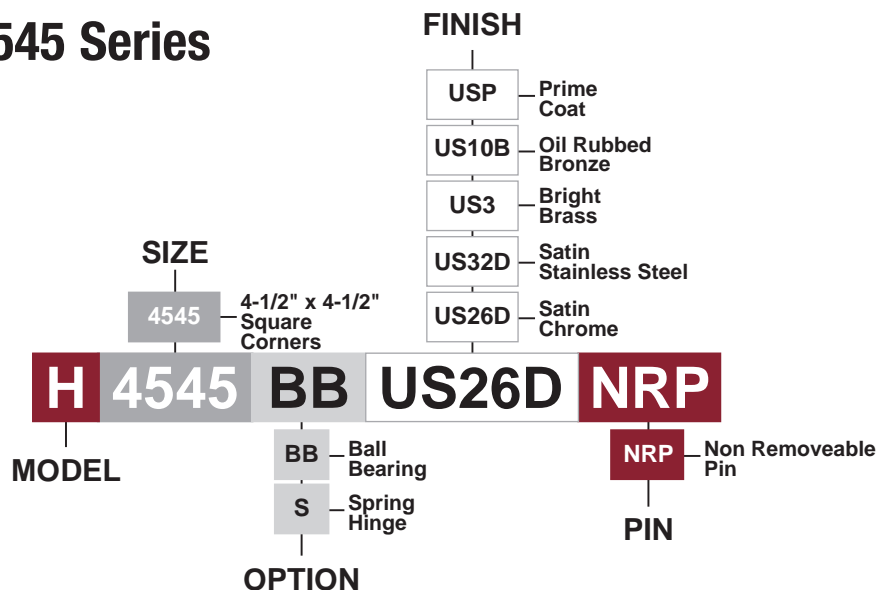
Standard Features

- **Performance** Complies with ANSI A156.1, 1999 (plain bearing and ball bearing)
- **Performance** Complies with ANSI A156.17, 1999, UL listed (spring hinge)
- **Hinge** 4-1/2" x 4-1/2", square corner, templated, .134" gauge steel.
See below for pin and finish options.
- **Screws** Furnished with 24 metal screws and 24 #12 wood screws
- **Warranty** 1 year

Optional Features

- **Pin** Ball Bearing & Non-removeable
- **Finishes** USP, US26D, US32D, US3, US10B
- **Note** Other finishes and sizes available upon request. Check for availability and lead time.
- **Gauge** Heavy-duty available in US26D finish, ball bearing, with either loose pin or non-removeable pin (NRP)

How To Order H4545 Series



TELL MANUFACTURING, INC — Page 1 — 2014

CORPORATE OFFICE: 18 Richard Drive, Lititz, PA 17543 **TOLL FREE:** 800-433-4047 **PHONE:** 717-625-2990 **FAX:** 717-625-7095
OTHER LOCATIONS: BIRMINGHAM, ALABAMA MIRA LOMA, CALIFORNIA ELKHART, INDIANA HOUSTON & DALLAS, TEXAS
WEBSITE: www.tellmfg.com



- **Pin** Non-removeable
- **Finishes** US26D, US3, US4, US10B, USP
- **Note** Other finishes and sizes available upon request. Check for availability and lead time.



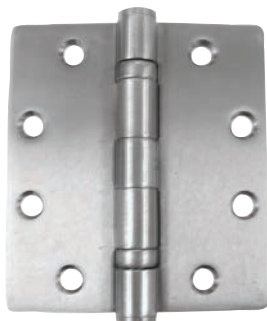
- **Pin** Non-removeable
- **Finishes** US26D, US3, US4, US10B, USP
- **Note** Other finishes and sizes available upon request. Check for availability and lead time.

CORPORATE OFFICE: 18 Richard Drive, Lititz, PA 17543 **TOLL FREE:** 800-433-4047 **PHONE:** 717-625-2990 **FAX:** 717-625-7095
OTHER LOCATIONS: BIRMINGHAM, ALABAMA MIRA LOMA, CALIFORNIA ELKHART, INDIANA HOUSTON & DALLAS, TEXAS
WEBSITE: www.tellmfg.com



Aluminum Storefront Frame

4-1/2" x 4" Full Mortise Radius Corner Hinges



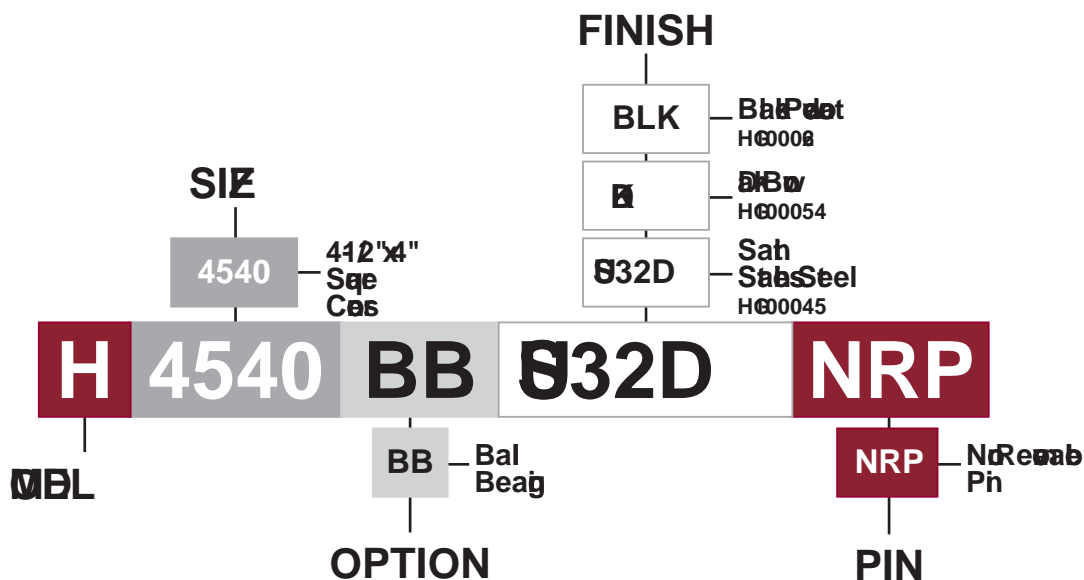
Standard Features

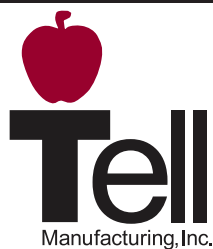
- **Performance** Complies with ANSI 156.1-2000
- **Hinge** Standard sizes 4-1/2" x 4"; standard weight; standard with ball bearings; standard with 3/16" radius corners; templated
- **Screws** Furnished with metal screws and 1/2 wood screws

Optional Features

- **Pin** Non-removable pin
- **Finishes** US32D, DKB, and black powdercoat

How To Order Aluminum Storefront Full Mortise Hinges





SPRING HINGE (Commercial)

4-1/2" x 4-1/2" Square Corner Hinges, Reversible, Fully Adjustable



Full Mortise Type Template

Size to FH Screws		Pieces Per Box	Pieces Per Carton
Machine	Wood	1	48
1/2" x 12-24	1-1/4" x 12		

US26D / Satin Chrome

SH-140

4-1/2" X 4-1/2"

.134



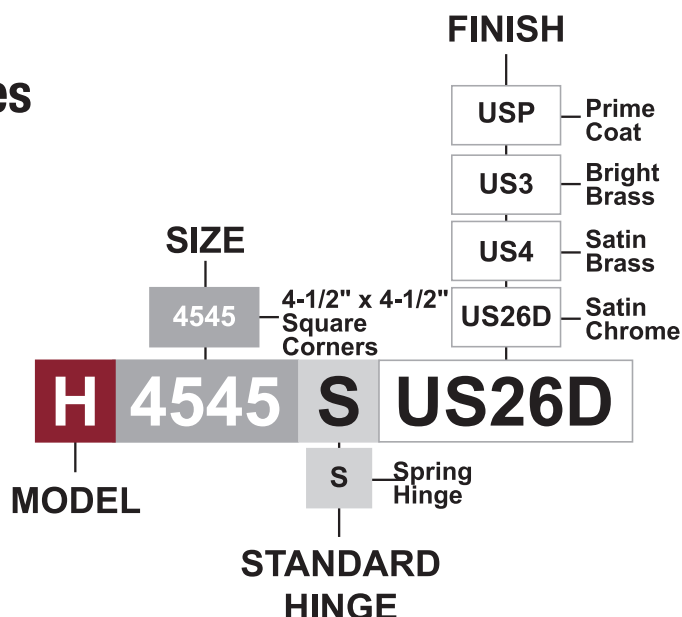
Standard Features

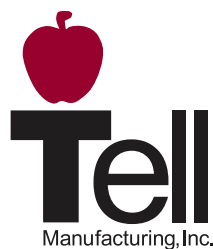
- **Performance** Complies with ANSI A156.17, 1999, UL listed (spring hinge)
- **Hinge** Templated, .134" gauge steel.
- **Screws** Furnished with 8 metal screws and 8 #12 wood screws
- **Warranty** 1 year

Optional Features

- **Finishes** USP/Prime Coat, US26D/Satin Chrome, US4/Satin Brass, US3/Bright Brass
- **Material** Steel available
- **Note** Other finishes and sizes available upon request. Check for availability and lead time.

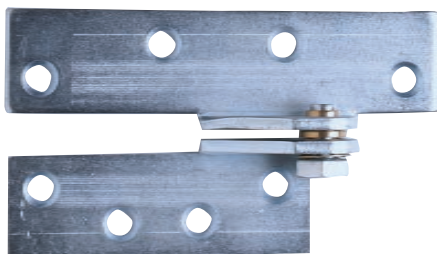
How To Order Spring Hinges





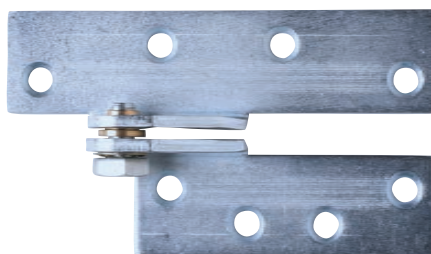
HINGE PIVOTS

4-1/2" x 4-1/2" Square Corner Hinges



Left Hand - BZ / Bright Zinc

HG100233



Right Hand - BZ / Bright Zinc

HG100234

Standard Features

- **Butt Hinge Width** 4.5" x 4.5", square corners
- **Projection** 3/4" — projection from centerline of pivot to face of door
- **Door Thickness** 1-3/4"
- **Gauge** .187
- **Handing** Left hand or right hand
- **Machine Screws** 3/4 x 1/4-20
- **Wood Screws** 1-1/4 x 14
- **Warranty** 1 year warranty

How To Order Hinge Pivots

