

# Switches - Float

## Sump or Open Tank Style – Type FG

Catalog #	UPC Code	Type	Description
9036FG	Special Order		Universal kit which includes switch, plastic center hole float, rod and attaching hardware
9036FG30	Special Order	Switch only	Contacts close on liquid rise 2-pole NEMA 1
9049A60	Special Order	Float	Plastic center hole float
9049A61	Special Order	Tubing	33.75 inch aluminum rod, 2 float stop assemblies and attaching hardware

## Sump or Open Tank Style – Type DG, GG

Catalog #	UPC Code	Type	Description	Force up to trip	Force down to Trip	Level Position
9036DG2*	Special Order	Switch only	Contacts close on liquid Rise	9 oz.	8 oz.	n/a
9036DG2R	7-85901-57643-3	Switch only	Contacts open on liquid rise; universal float and rod kit consists of 1-7"	9 oz.	8 oz.	n/a
9036GG2*	Special Order	Switch only	Contacts close on liquid rise; top tapped 304 stainless steel float, 2-2½'	33 (21) oz.	39 (27) oz.	short, (long)
9036GG2R*	Special Order	Switch only	Contacts open on liquid rise; brass rods with connector and 2-stop collars	34 (21) oz.	40 (27) oz.	short, (long)
9049A6*	Special Order	Tapped-at-Top	#304 SS float; 5' brass tubing and two stops	–	–	–
9049A6S	Special Order	Floats	#304 SS float; 5' SS tubing and two stops	–	–	–
9049A6C	Special Order	Center-Hole	#304 SS float; 5' brass tubing and four stops	–	–	–
9049A6CS	Special Order	Floats	#304 SS float; 5' SS tubing and four stops	–	–	–
9049T1	Special Order	Additional Tubing	2½' brass tubing with connector	–	–	–
9049T1S	Special Order	Additional Tubing	2.5 foot SS tubing with connector	–	–	–



## Pumptrol Float Switches Class 9036

### • Pedestal Style

#### Type FG30

- Designed for liquid level control with electric motor operated pumps either directly or through a magnetic starter
- Can also be used to activate alarms in liquid level control systems
- Upward or downward movement of the lever arm of the Class 9036 Type FG30 float switch controls the ON and OFF positions corresponding to the water level changes required to turn the pump or alarm on and off

### • Sump or Open Tank Type DG, GG

- Double-pole rated
- 2 HP @ 115 Vac and 3 HP @ 230 Vac
- Designed for automatic control of liquid level in open sumps or tanks handling small motor loads directly or through a starter
- NEMA Type 1 Indoor Enclosure
- Type GG – heavier duty for light commercial and industrial applications



9036DG2



9036GG2



9036FG

\* Item may require additional lead time.

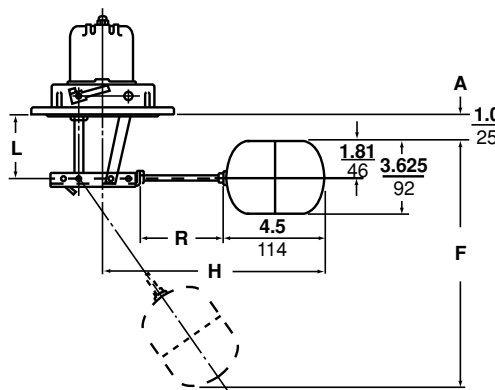
# Switches - Float

## Closed Tank – Screw-in Style – Type HG

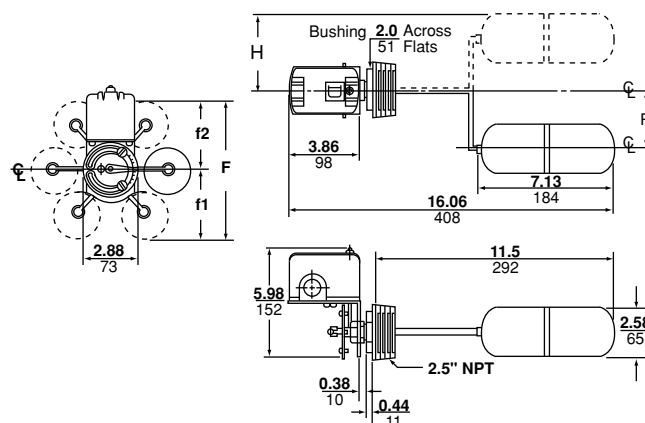
Catalog #	UPC Code	Description	Float Position▲	Float Rod Angle	Approx. Water Level Change (Field Adjustable)	
					Minimum	Maximum
9037HG33*	Special Order	Contacts close on liquid rise	Right	45° offset	2"	5"
9037HG32	Special Order		Left	90° offset	2"	11½"
9037HG31	Special Order	Contacts close on liquid rise	Right	90° offset	2"	11½"
9037HG30	Special Order		Left	90° offset	2"	8¼"

## Closed Tank – Flange Mount Style – Type EG

Catalog #	UPC Code	Description	Post Length
9037EG8	Special Order	For minimum water level change	2⅝"
9037EG9	Special Order	For maximum water level change	2⅝"



9037EG



9037HG



## Pumptrol Float Switches Class 9037

### • Closed Tank-Type HG

- NEMA Type 1 Indoor Enclosure
- Double-pole rated
- 2 HP @ 115 Vac and 3 HP @ 230 Vac
- Type HG switch is attached to tank by means of 2½" screw connection
- Switches come complete with stainless steel float and rod
- Buna N Quad-Ring® seal is used between the float rod and sealing connector
- Can withstand tank pressures up to 50 PSIG at temperatures up to 220°F

### • Closed Tank-Type EG

- NEMA Type 1 Indoor Enclosure
- Double-pole rated
- 2 HP @ 115 Vac 3 HP @ 230Vac
- Switches are flange mounted and float movement is transmitted through a stuffing box
- Can be built up to meet exact requirements from the basic switch, float rod and float groups
- Switch may be assembled in the field to give contacts that open on liquid rise or close on liquid rise

\* Item may require additional lead time.

▲ Viewed from front of switch facing indicator scale.

QUAD-RING® is a registered trademark of Minnesota Rubber Co.

VITON® is a registered trademark of DuPont Co.

# Switches – Pressure



Class 9013 Type FSG

## Single-phase electrical ratings

- FSG:  
1.5 HP @ 115 Vac  
2 HP @ 230 Vac
- FRG:  
1 HP @ 115 Vac  
1 HP @ 230 Vac
- FYG:  
2 HP @ 115 Vac  
3 HP @ 230 Vac
- FHG:  
1.5 HP @ 115 Vac  
2 HP @ 230 Vac
- GSG, GHG  
2 HP @ 115 Vac  
3 HP @ 230 Vac  
5 HP @ 460/575 Vac

## Additional features defined

- Maintained manual cut-out lever has two positions: AUTO-switch operates on rising and falling pressure; and OFF – contacts are held in the open or off position.
- Low pressure cut-off operates at approximately 10 PSIG below the cut-in setting to stop the pump in the event it runs dry or a line breaks.
- Pulsation plug enables the switch to operate on reciprocating pump without responding to the pressure spikes at the end of each piston stroke.
- 2-way pressure relief valve releases head pressure on the compressor upon cut-off of the switch.
- CP – clamshell package  
BP – box packaging.

▲ Differential – the difference between cut-in and cut-out pressure.

Catalog #	UPC Code	Cut-In Setting (PSIG)	Cut-Out Setting (PSIG)	Pressure Connection (NPSF Internal)	Additional Features*
<b>Water Pump Pressure Switches – Type FSG*</b>					
<b>Standard Action: Contacts Open On Rising Pressure; 2-Pole, NEMA 1</b>					
FSG2J20BP	0-47569-11533-2	20	40	1/4"	
FSG2J20CP	0-47569-00632-6	20	40	1/4"	
FSG2J20PBP	0-47569-11534-9	20	40	1/4"	Pulsation plug
FSG2J20PCP	0-47569-52171-3	20	40	1/4"	Pulsation plug
FSG2J20M1BP	0-47569-11535-6	20	40	1/4"	Manual cut-in lever
FSG2J20M1CP	0-47569-80786-2	20	40	1/4"	Manual cut-in lever
FSG2J20M4BP	0-47569-11536-3	20	40	1/4"	Low pressure cut-off
FSG2J20M4CP	0-47569-80787-9	20	40	1/4"	Low pressure cut-off
FSG2J18CP	Special Order	20	50	1/4"	
FSG2J21BP	0-47569-11538-7	30	50	1/4"	
FSG2J21CP	0-47569-80785-5	30	50	1/4"	
FSG2J21M1BP	0-47569-11539-4	30	50	1/4"	Manual cut-in lever
FSG2J21M1CP	0-47569-04397-0	30	50	1/4"	Manual cut-in lever
FSG2J21M4BP	0-47569-11540-0	30	50	1/4"	Low pressure cut-off
FSG2J21M4CP	0-47569-03466-4	30	50	1/4"	Low pressure cut-off
FSG2J24BP	0-47569-11541-7	40	60	1/4"	
FSG2J24CP	0-47569-07217-8	40	60	1/4"	
FSG2J24M4BP	0-47569-11542-4	40	60	1/4"	Low pressure cut-off
FSG2J24M4CP	0-47569-17782-8	40	60	1/4"	Low pressure cut-off
<b>Water Pump Pressure Switches – Type FRG**</b>					
<b>Reverse Action: Contacts Open On Falling Pressure; 2-Pole, NEMA 1</b>					
9013FRG22J36	Special Order	10	5	1/4"	
9013FRG22J19	Special Order	22	16	1/4"	
9013FRG2J23	Special Order	40	20	1/4"	
9013FRG2J23M3	Special Order	40	20	1/4"	Momentary manual cut-in lever (AUTO-START)
9013FRG2J23M5	Special Order	40	20	1/4"	Maintained manual cut-in lever (AUTO-ON)
9013FRG2J35	Special Order	50	30	1/4"	
<b>Water Pump Pressure Switches – Type FYG***</b>					
<b>Standard Action: Contacts Open On Rising Pressure; 2-Pole, NEMA 1 with higher HP</b>					
9013FYG2J20	Special Order	20	40	1/4"	
9013FYG2J21	Special Order	30	50	1/4"	
9013FYG2J24	Special Order	40	60	1/4"	
9013FYG2J33	Special Order	50	70	1/4"	
9013FYG2J25	Special Order	60	80	1/4"	
*FSG2 – 20-65 PSIG Cut-in Range, 10-45 PSIG Cut-out Range, 15-30 PSIG Approx. Adjustable Differential▲					
**FRG2 – 23-65 PSIG Cut-in Range, 8-45 PSIG Cut-out Range, 15-30 PSIG Approx. Adjustable Differential▲					
***FRG22 – 10-45 PSIG Cut-in Range, 6-20 PSIG Cut-out Range, 4-25 PSIG Approx. Adjustable Differential▲					
***9013FYG2 – 25-80 PSIG Cut-in Range, 5-60 PSIG Cut-out Range, 20-30 PSIG Approx. Adjustable Differential▲					



## Pumptrol Water Pump and Air Compressor Pressure Switches Class 9013

Schneider Electric's Square D brand of pressure switches have set the standard for reliability, efficiency and durability. As the most trusted brand in residential, commercial and industrial pumping applications, Square D pressure switches continue to meet the daily needs of the water systems industry.

### High reliability

- Rugged, robust construction provides a long life and provides years of uninterrupted, worry-free service
- Feature drift proof cut-in and cut-out settings
- Has visible vertical contacts, easy to inspect without removal
- Extra wide diaphragm orifice reduces clogging
- An extra strong frame that resists distortion when mounting the switch to a pipe or compressor
- Designed for the direct control of motors in pump and compressor applications. Water pump switches suitable for all types of pumps: jets, submersible, reciprocating, etc.
- Diaphragm actuated

### Models

- Type FSG is the standard water pump switch
- Type FYG is designed to meet higher horse-power and pressure requirements
- Type FRG is reverse acting
- Type FHG for air compressors
- Type G for higher electrical ratings (water pumps and air compressors)

Catalog #	UPC Code	Cut-Out Setting (PSIG)	Pressure Connection (NPSF Internal)	Additional Features*
<b>Air Compressor Pressure Switches – Type FHG*</b>				
<b>Standard Action: Contacts Open On Rising Pressure; 2-Pole, NEMA 1</b>				
FHG2J27BP	0-47569-11543-1	100	1/4"	
FHG2J27CP	0-47569-17822-1	100	1/4"	
FHG2J27XCP	0-47569-17823-8	100	1/4"	2-way pressure relief
FHG12J52XBP	0-47569-11545-5	125	1/4"	2-way pressure relief
FHG12J52XCP	0-47569-17824-5	125	1/4"	2-way pressure relief
FHG12J55BP	Special Order	150	1/4"	
FHG12J55CP	0-47569-17825-2	150	1/4"	
FHG12J55XBP	0-47569-11547-9	150	1/4"	2-way pressure relief
FHG12J55XCP	0-47569-17826-9	150	1/4"	2-way pressure relief
9013FHG42J59	Special Order	175	1/4"	
9013FHG42J59X	Special Order	175	1/4"	
9013FHG49J59	Special Order	175	1/4" NPT External	
9013FHG49J59X	Special Order	175	1/4" NPT External	2-way pressure relief
<b>Air Compressor Water Pump Pressure Switches – Type GHG, GSG**</b>				
<b>Standard Action: Contacts Open On Rising Pressure; 2-Pole, NEMA 1</b>				
9013GSG2J20	Special Order	40	1/4"	
9013GSG2J21	Special Order	50	1/4"	
9013GSG2J24	Special Order	60	1/4"	
9013GSG2J25	Special Order	80	1/4"	
9013GHG2J25	Special Order	80	1/4"	
9013GHG2J29	Special Order	100	1/4"	
9013GHG2J30	Special Order	100	1/4"	
9013GHG2J53	Special Order	125	1/4"	
9013GHG2J63	Special Order	175	1/4"	
9013GHG2J30X	Special Order	100	1/4"	2-way pressure relief
9013GHG2J53X	Special Order	125	1/4"	2-way pressure relief
9013GHG2J63X	Special Order	175	1/4"	2-way pressure relief
*FHG2 – 40-100 PSIG Cut-out Range, 20 PSIG Approx. Adjustable Differential▲				
*FHG12 – 70-150 PSIG Cut-out Range, 30 PSIG Approx. Adjustable Differential▲				
*FHG49 – 100-200 PSIG Cut-out Range, 40 PSIG Approx. Adjustable Differential▲				
**9013GSG2 – 5-60 PSIG Cut-out Setting, 20-80 PSIG Cut-out Range, 15-30 PSIG Approx. Adjustable Differential▲				
**9013GHG2 – 40-170 PSIG Cut-out Setting, 65-200 PSIG Cut-out Range, 20-40 PSIG Approx. Adjustable Differential▲				



Class 9013 Type GHG



Class 9013 Type FHG