

RTA/RTB/RTC/RTF/RTR/RTT/RTU/FWH

Rigid Tie® Connectors

Rigid Tie connector products are great utility connectors used to connect wood members together in a variety of ways. See the table and drawings for possible wood member connections.

Material: RTC44 — 14 gauge; RTA2 — 16 gauge; RTR and RTB — 20 gauge; all others — 18 gauge

Finish: Galvanized. Some products available in ZMAX® coating; see Corrosion Information, pp. 13–15.

Installation:

- Use all specified fasteners; see General Notes
- Always follow manufacturer's instructions when using power tools and building equipment

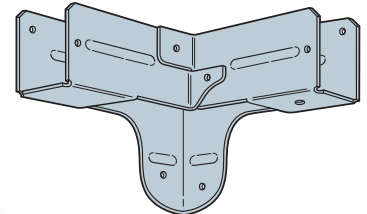
Codes: See p. 12 for Code Reference Key Chart

These products are available with additional corrosion protection. For more information, see p. 15.

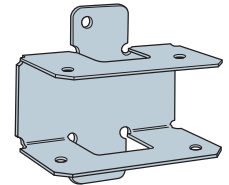
SD Many of these products are approved for installation with Strong-Drive® SD Connector screws. See pp. 335–337 for more information.

**WBSK**

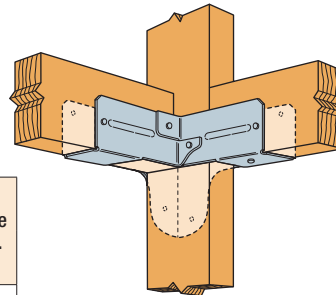
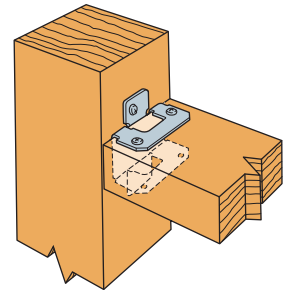
The Workbench/Shelving Kit is a fast-easy way to build a workbench and many other DIY-type projects that need a four-corner base. Visit diydoneright.com for more information.



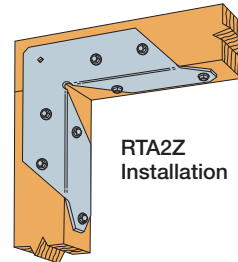
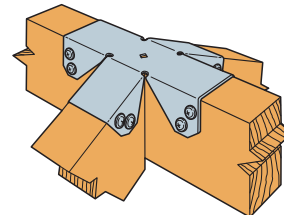
RTC2Z



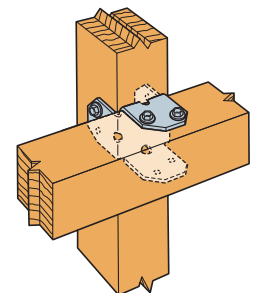
RTR

RTC2Z
Installation

RTR Installation

RTA2Z
Installation

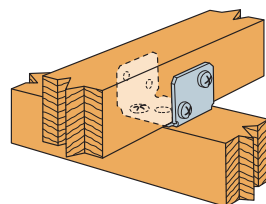
FWH2 Installation



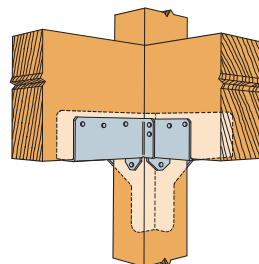
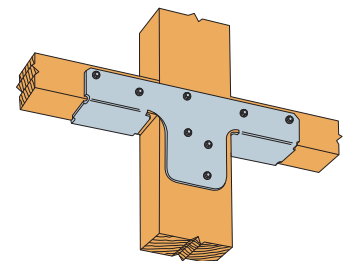
RTB22 Installation

Model No.	Post Size	Joist Size	Fasteners (Total) (in.)		Allowable Loads (DF/SP)		Code Ref.
			Post	Joist	Floor (100)	Roof (125)	
FWH2	2x	2x	(8) SD #8 x 1 1/4	(8) SD #8 x 1 1/4	N/A	N/A	—
RTA12	1x	1x	(8) SD #8 x 1 1/4	(8) SD #8 x 1 1/4	N/A	N/A	
RTA2Z	2x	2x	(4) SD #9 x 1 1/2	(4) SD #9 x 1 1/2	150	150	
RTA4	4x	4x	(7) SD #8 x 1 1/4	(5) SD #8 x 1 1/4	N/A	N/A	
RTB22	2x	2x	(4) SD #8 x 1 1/4	(4) SD #8 x 1 1/4	N/A	N/A	
RTC22Z	2x	2x	(5) SD #9 x 1 1/2	(6) SD #9 x 1 1/2	775	775	IBC, FL, LA
RTC2Z	2x4	2x	(6) SD #8 x 1 1/4	(6) SD #8 x 1 1/4	300	375	
			(6) 0.148 x 1 1/2	(6) 0.148 x 1 1/2	710	875	
			(6) SD #9 x 1 1/2	(6) SD #9 x 1 1/2	1,025	1,260	
RTC42	4x4	2x	(14) SD #8 x 1 1/4	(8) SD #8 x 1 1/4	650	810	
			(14) 0.162 x 3 1/2	(8) 0.148 x 1 1/2	1,975	2,430	
			(14) SD #10 x 1 1/2	(8) SD #10 x 1 1/2	2,420	3,030	
RTC44	4x4	4x	(14) 0.148 x 3 1/4	(15) 0.148 x 3 1/4	1,770	2,140	
			(14) 0.162 x 3 1/2	(15) 0.162 x 3 1/2	2,085	2,530	
			(14) SD #10 x 1 1/2	(15) SD #10 x 1 1/2	2,420	3,030	
RTF2Z	2x4	2x	(4) SD #9 x 1 1/2	(8) SD #9 x 1 1/2	685	855	
RTT22Z	2x	2x	(3) SD #9 x 1 1/2	(7) SD #9 x 1 1/2	500	500	
RTR	2x	2x	(2) SD #8 x 1 1/4	(4) SD #8 x 1 1/4	N/A	N/A	—
RTU2	2x	2x	(2) SD #8 x 1 1/4	(4) SD #8 x 1 1/4	N/A	N/A	

1. Allowable loads must be equally distributed on both joists.
2. **Fasteners:** Nail dimensions in the table are diameter by length. SD and SDS screws are Simpson Strong-Tie® Strong-Drive® screws. See pp. 21–22 for fastener information.



RTU2 Installation

RTC44 Installation
(RTC2Z similar)

RTF2Z Installation