

# PRODUCT CATALOG

## RESIDENTIAL REFURBISHMENT, SEALING & BONDING



# TRADITION AND SUPERIOR QUALITY

*Sika's success and excellent reputation are based on its **long lasting tradition of innovation**. For over 100 years, Sika products have been approved and specified on the world's largest jobsites for **their superior quality and durability**. Sika is the name trusted by **the Pros**.*

*Believing that **every customer deserves the best**, Sika Corporation offers its line of professional products to home improvement stores, wholesalers and select retailers throughout the U.S. Sika's PRO Select retail product line includes **specialty sealants, adhesives, waterproofing sealers, grouts, flooring levelers and admixtures**. Whether you are working on your home improvement project or your commercial store front, **Sika has the solutions and products you need to ensure that you fix it right and "Fix it Once"!***



## Contents

SEALING

Page 4 to 11

BONDING AND ANCHORING

Page 14 to 19

REFURBISHMENT

Page 22 to 31

WOOD FLOOR BONDING

Page 34 to 39

**Special Note:** Actual colors may vary from colors represented in this catalog. Use cured samples for proper color matching.



# SEALING

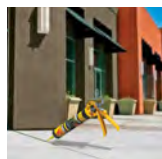
## Sikaflex® Self-Leveling Sealant

### One-component polyurethane for horizontal applications

Fast curing, self leveling PRO grade polyurethane elastic sealant for sealing expansion joints, gaps and moving cracks in horizontal concrete and masonry. Perfect for driveways, sidewalks, etc.

#### + Advantages

- No tooling required! Levels itself
- Water immersible after cure
- Able to bridge gaps up to 2 in. wide
- Paintable, stainable, sandable
- Flexible and durable
- Water and weather resistant



Colors :



Gray



Sandstone

Name	Color/ Size	SIKA SKU #	UPC #
Sikaflex® Self Leveling Sealant	Gray / 10.1 oz.	<b>91065</b>	033 886 000 437
Sikaflex® Self Leveling Sealant	Gray / 29 oz.	<b>106711</b>	033 886 000 451
Sikaflex® Self Leveling Sealant	Sandstone / 29 oz.	<b>107748</b>	033 886 001 014

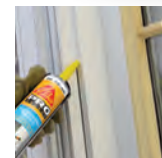
## Sikaflex® Construction Sealant

### One-component polyurethane for sealing joints and gaps

One-component, polyurethane sealant used to seal joints and gaps, especially around window and door perimeters.

#### + Advantages

- Permanently elastic
- Vertical/overhead applications
- Potable water approved
- Paintable, stainable, sandable
- Waterproof and water immersible after cure
- Superior adhesion and durability



Colors :



White



Capitol Tan



Limestone



Dark Bronze



Aluminum Gray

Name	Color	SIKA SKU #	UPC #
Sikaflex® Construction Sealant	White	<b>90618</b>	033 886 000 413
Sikaflex® Construction Sealant	Capitol Tan	<b>107840</b>	033 886 000 338
Sikaflex® Construction Sealant	Limestone	<b>90959</b>	033 886 000 390
Sikaflex® Construction Sealant	Dark Bronze	<b>90958</b>	033 886 000 376
Sikaflex® Construction Sealant	Aluminum Gray	<b>90629</b>	033 886 000 291

## Sikasil® Builders' Silicone

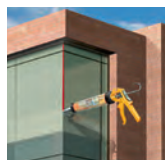
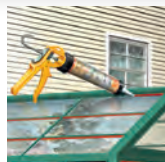
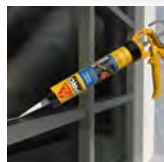
Neutral cure, one-component, building silicone

Neutral cure silicone for sealing expansion and control joints. Ideal for window and door perimeters, skylights, conventional glazing, and other building components.



### Advantages

- High heat and UV resistance
- Bonds to glass, concrete, metal, aluminum, tile and more
- Vertical, horizontal and overhead applications
- Low odor
- Water and weather resistant
- Clear to easily blend with any substrate



Color :



Clear

Name	Size	SIKA SKU #	UPC #
Sikasil® Builders' Silicone	10.1 oz.	463266	033 886 077 910

## Sikaflex® Crack Flex Sealant

One-component, textured polyurethane

One-component, textured polyurethane for sealing cracks in horizontal concrete and masonry surfaces. Ideal for sidewalks, garages, patios, decks, etc.



### Advantages

- For cracks up to 1" wide
- Elastic technology allows for crack movement
- Gradually self levels into cracks and expansion joints
- Textured for added density and textured finish
- Waterproof and water immersible after cure
- Superior durability in all weather conditions



Color :



Textured Gray

Name	Size	SIKA SKU #	UPC #
Sikaflex® Crack Flex Sealant	10.1 oz.	427706	033 886 064 514

## Sikaflex® Concrete Fix

### One-component, polyurethane sealant

A moisture-cured, 1-component, polyurethane- based, non-sag elastomeric sealant. Meets Federal specification TT-S-00230C, Type II. Meets ASTM C-920, Type S, Grade NS.

#### + Advantages

- Non-sag & non-staining
- For vertical, horizontal and overhead applications
- Water immersible after cure
- Paintable, stainable, and sandable after cure
- Shrink and crack resistant
- Excellent resistance to aging and weathering
- Exceptional cut and tear resistance



Color :



Gray

Name	Size	SIKA SKU #	UPC #
Sikaflex® Concrete Fix	10.1 oz.	187783	033 886 002 639

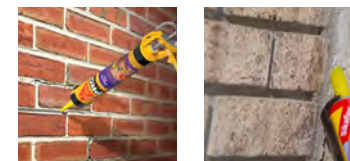
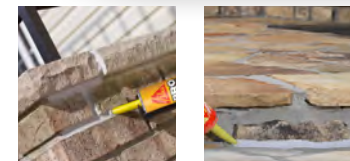
## Sikaflex® Mortar Fix

### One-component, textured, polyurethane sealant

A moisture-cured, 1-component, polyurethane- based, non-sag elastomeric sealant capable of  $\pm 25\%$  joint movement. Ideal for weatherproofing of joints between brickwork, blockwork, masonry, concrete or metal frames.

#### + Advantages

- Permanently elastic, allowing cracks to expand and contract
- Textured for mortar and stucco like appearance
- Shrink and crack resistant
- Paintable, stainable, and sandable after cure
- Waterproof & water immersible after cure
- Super adhesion and durability
- Hides imperfections unlike smooth sealants



Color :



Textured Gray

Name	Size	SIKA SKU #	UPC #
Sikaflex® Mortar Fix	10.1 oz.	187784	033 886 002 622

## Sikadur® Crack Fix

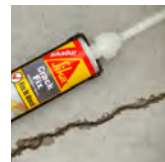
Low-viscosity, high-strength epoxy sealing system

A 2-component, moisture-tolerant, low-viscosity, high-strength, multipurpose, epoxy resin adhesive for sealing non-moving cracks in structural concrete. It conforms to the current ASTM C-881 and AASHTO M-235 specifications.



### Advantages

- 5X stronger than concrete once cured
- Deep, penetrating and tenacious bonding of cracks in structural concrete
- Easy application, Part A & B mix in nozzle
- Fast initial set; rapid gain to ultimate strengths
- Welds cracks in horizontal applications



Color :



Clear Amber

Name	Size	SIKA SKU #	UPC #
Sikadur® Crack Fix	10 oz. cartridge yields 6 oz.	107655	033 886 002 608

## Sika® Backer Rod

3/4" closed cell backer rod

3/4" closed cell backer rod used to partially fill deep cracks and joints before applying sealant.



### Advantages

- Easy to apply
- Highly flexible and compressible
- Will not absorb water
- Prevents 3 sided adhesion
- Controls sealant depth for window, door and expansion joints



Color :



Gray

Name	Size	SIKA SKU #	UPC #
Sikaflex® Backer Rod	3/4 in. x 20' long	108130	033 886 001 595





## SikaBond® Hardscape Adhesive

One-component, polyurethane adhesive

Adhesive especially developed for hardscaping projects.



### + Advantages

- Non-sag
- For vertical and horizontal applications
- Water immersible after cure
- Paintable, stainable, sandable
- Shrink and crack resistant
- Excellent resistance to aging and weathering
- Resistant to freeze/thaw cycles



Color :



Gray

Name	Size	SIKA SKU #	UPC #
SikaBond® Hardscape Adhesive	10.1 oz.	<b>479628</b>	033 886 082 464

## SikaBond® Ultimate Grab

One-component, instant grab polyurethane adhesive

A strong grab adhesive for interior and exterior vertical applications.



### + Advantages

- Powerful instant grab
- Elastic to allow for natural movement of substrates
- VOC compliant in all 50 states
- Permanently water immersible after cure
- Superior adhesion to a large variety of substrates
- Repositionable up to 30 minutes\*



Color :



Dark Gray

Name	Size	SIKA SKU #	UPC #
SikaBond® Ultimate Grab	10.1 oz.	<b>476098</b>	033 886 081 122

\*Object to be bonded must not lose contact with the substrate being bonded to. Results may vary depending on temperature and relative humidity.

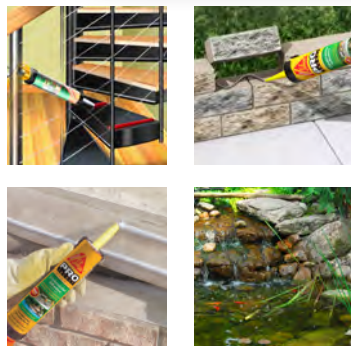
## SikaBond® Construction Adhesive

One part advanced polyurethane, elastomeric adhesive

A one-component, gun-grade, adhesive and sealing compound of permanent elasticity. This dual-purpose material is based on a special moisture-cured polyurethane with an accelerated curing time.

### + Advantages

- Permanently elastic
- Water immersible after cure
- Bonds pavers, caps, roofing, concrete, wood, tile, aluminum, foam, mirrors and more
- Paintable, stainable and sandable after cure
- Waterproof after cure



Color :   
Gray

Name	Size	SIKA SKU #	UPC #
SikaBond® Construction Adhesive	10.1 oz.	<b>106403</b>	033 886 000 475
SikaBond® Construction Adhesive	29 oz.	<b>409586</b>	033 886 050 746

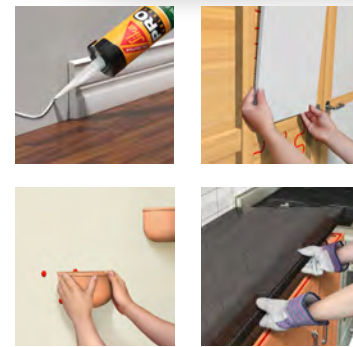
## Sika MaxTack® Fast Grab Adhesive


Interior, water-based, fast grab adhesive

A one-component, fast grab, high strength, water-based adhesive used for interior building applications.

### + Advantages

- High strength and fast green grab
- Durable
- Bonds to most substrates, including concrete, mortar, wood, etc.
- Eliminates the need for nails and screws
- Low odor
- Easy clean up



Color :   
Cream

Name	Size	SIKA SKU #	UPC #
Sika MaxTack® Fast Grab Adhesive	9.4 oz.	<b>463638</b>	761 289 508 0314

## Sika® AnchorFix-1

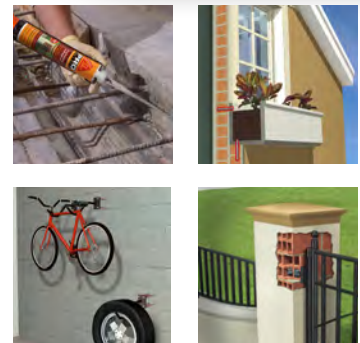
### High performance, two component adhesive anchoring system


Fast-setting anchoring adhesive for everyday anchoring projects such as railing installations, setting rebar, bolts, dowels, pins and more into concrete and masonry.



**+** **Advantages**

- Can be used in subfreezing temperatures
- High strength for vertical and horizontal applications
- Part A & B self mixes in nozzle for a FULL 10 oz. of material
- Sets in minutes in warmer temperatures
- For use with standard caulk gun
- Packaged with 2 static mixing nozzles
- Extended working time when needed



Color :   
Gray

Name	Size	SIKA SKU #	UPC #
Sika® AnchorFix-1 Anchoring Adhesive	10.1 oz.	112729	033 886 001 380

## Sika® AnchorFix-2

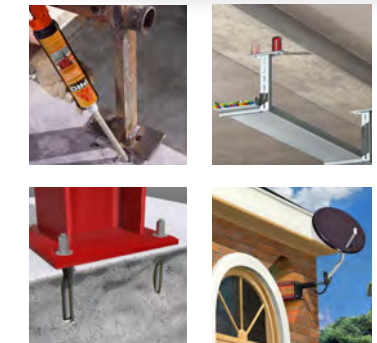
### High performance, two component adhesive anchoring system


A super strong, two-component anchoring adhesive that exhibits high load capacities and can be used in heavy duty anchoring projects.



**+** **Advantages**

- Can be used in subfreezing temperatures
- High strength for vertical and horizontal applications & sets in minutes
- Self mixes in nozzle for a FULL 10 oz. of material
- For use with standard caulk gun & packaged with 2 static mixing nozzles
- ANSI/NSF 61 Certified by UL
- ESR to AC308 by ICC-ES for threaded bars only
- ESR to AC308 by IAPMO-UES for threaded bars only



Color :   
Gray

Name	Size	SIKA SKU #	UPC #
Sika® AnchorFix-2 Super Strong Anchoring Adhesive	10.1 oz.	112718	033 886 001 472



# REFURBISHMENT



## Sikagard® High Gloss Sealer

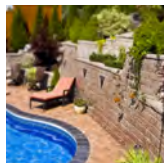
### Acrylic surface sealer

An acrylic sealer for concrete and masonry that dries to a clear, glossy finish and provides protection against moisture and mild corrosives. Ideal for retaining walls.



### Advantages

- Roll, brush or spray apply
- Improves dirt resistance
- Protects from mild corrosives
- Protects from de-icing salts
- Adds sheen to surface appearance
- Keeps substrates looking new longer



Color :



Applies White  
(dries Clear)

Name	Size	SIKA SKU #	UPC #
Sikagard® High Gloss Sealer	1 gal.	107698	033 886 002 493

## Sikagard® Natural Look Sealer

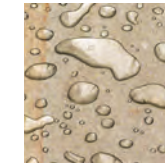
### Penetrating water-repellent sealer

A commercial grade water-repellent sealer that penetrates an absorbent surface to form a seal against the elements, such as water and chlorides. It can be used on concrete, masonry, mortar, brick, and stone. Ideal for patios, retaining walls, pavers, etc.



### Advantages

- For vertical and horizontal applications
- Will not alter surface appearance
- Protects from mild corrosives
- Improves dirt resistance
- Resists the growth of fungi and moss
- Keeps substrates looking new longer



Color :



Applies White  
(dries Clear)

Name	Size	SIKA SKU #	UPC #
Sikagard® Natural Look Sealer	1 gal.	107699	033 886 002 509

## SikaLatex® R

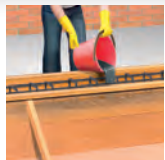
### Bonding agent and admixture for mortar and concrete

Latex bonding adhesive and acrylic fortifier for bonding new concrete to old and improving adhesion of concrete or mortar.



### + Advantages

- No wait time before applying top coat
- Improves resistance to freeze/thaw cycles
- Spray, roll or brush on
- Improves adhesion characteristics
- Easy to mix and dose
- Does not produce a vapor barrier
- USDA approved



Color :



Milky White

Name	Size	SIKA SKU #	UPC #
SikaLatex® R	1 quart	<b>471643</b>	033 886 079 730
SikaLatex® R	1 gal.	<b>187782</b>	033 886 001 069
SikaLatex® R	5 gal.	<b>91035</b>	033 886 007 924

## SikaGrout® 212

### High performance, cementitious grout

A non-shrink, high performance, cementitious grout with a special blend of shrinkage reducing and plasticizing /water reducing agents that compensate for shrinkage in both the plastic and hardened states.



### + Advantages

- Mix manually or mechanically
- Contains no chloride; Non-metallic, will not stain or rust
- Multiple fluidity levels with one product
- Low heat build up
- Resistant to oil and water & superior freeze/thaw resistance
- USDA approved
- Meets ASTM C-1107 (Grade C) - Meets CRD C-621



Color :



Gray

Name	Color	SIKA SKU #	UPC #
SikaGrout® 212	Gray	<b>90824</b>	033 886 001 045

## Sika® Level-125

Durable, cementitious, self-leveling underlayment for use at 1/25 to 2" thickness  
(in localized areas)

A one-component, cementitious underlayment for interior concrete and cementitious substrates. It can be applied manually or by pump to produce a self leveling, rapid-setting, flat and economical substrate prior to the application of a final floor finish. Typical application thickness is 1/25 to 2 inch (1 to 50 mm) in localized areas.



### Advantages

- Manual or pumpable application, fast and easy installation
- Zero VOC and low odor
- Highly fluid and self-leveling
- Levels new and renovates old floors
- Rapid drying; open to foot traffic in 2-3 hrs. at 73°F
- Excellent underlay for tiles, sheet products and wood floor bonding systems
- Floor coverings (carpet, vinyl, PVC, rubber, engineered wood flooring) can be installed after 1-3 days



Color :



Gray



Name	Size	SIKA SKU #	UPC #
Sika® Level-125	50 lb. bag	<b>188051</b>	033 886 013 109

## Sika® Level-315

Very rapid hardening and durable, cementitious, self-leveling underlayment for use at 1/25 to 2" thickness (in localized areas)

A one-component, fast track, cementitious underlayment for interior concrete, cementitious, wood, and tiled substrates. It can be applied manually or by pump. Typical application thickness is 1/25 to 2 inch (1 to 50 mm) in localized areas.



### Advantages

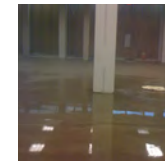
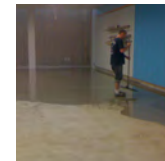
- Zero VOC, low odor, fast and easy installation
- Highly fluid and self-leveling ; levels new and renovates old floors
- Rapid drying, open to foot traffic in 4 hrs. at 73°F
- Ceramic tiles and natural stone can be installed after 6 hours
- Excellent underlay for tiles, sheet products and wood floor bonding systems
- Floor coverings (carpet, vinyl, PVC, rubber, engineered wood flooring) can be installed after 24 hours



Color :



Concrete Gray



Name	Size	SIKA SKU #	UPC #
Sika® Level-315	50 lb. bag	<b>188053</b>	033 886 013 116

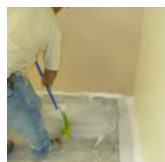
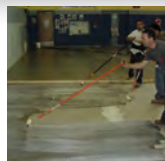
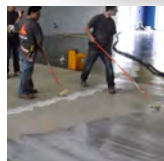
## Sika® Level-01 Primer

### Concrete primer and sealer for use with Sika Level-125 and -315

A one-part, water-dispersed, acrylic based solution used to prime and seal concrete surfaces prior to the application of Sika® Level-125 and Sika® Level-315 underlayments.

#### + Advantages

- Solvent-free
- Ready-to-use, no dilution required
- Penetrates substrate to reduce outgassing and formation of bubbles in underlayment
- Prevents water loss from the underlayment into the substrate
- Quick drying and fast film formation to increase productivity
- Excellent bond values at various application temperatures
- Effectively seals concrete surfaces economically



Color :



Applies White  
(dries Clear)

Name	Size	SIKA SKU #	UPC #
Sika® Level -01 Primer	1 gal.	416956	033 886 059 800

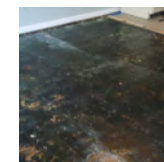
## Sika® Level-02 Primer

### Epoxy primer for use on difficult-to-adhere-to substrates

A two-part, water-dispersed, epoxy resin based solution used to prime typically problematic or smooth floor surfaces prior to the application of Sika® Level underlayments.

#### + Advantages

- Ready to mix, pre-proportioned components
- Easy to use 1:1 by volume, resin to hardener ratio
- Solvent-free
- Prevents water loss from underlayment into substrate on absorbent subfloors
- Extended pot life and open time
- Achieves good bond values, even on nonporous and smooth surfaces
- Effectively adheres cement underlays in a single, highly productive operation



Color :



Applies White  
(dries Clear)

Name	Size	SIKA SKU #	UPC #
Sika® Level-02 Primer	2 gal. (1 gal. Part A + 1 gal. Part B)	423414	033 886 062 909



## Sikacryl® Ready-Mix Concrete Patch

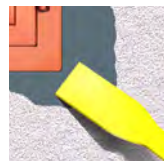
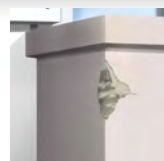
Acrylic-based, textured concrete patch for repairing spalls and cracks

An easy to use, acrylic-based, textured concrete patch for repairing small spalls and cracks in concrete and masonry. It cures to a tough and durable finish and can be used on concrete and masonry surfaces, such as sidewalks, steps, balconies, foundations, patios, and more.



### Advantages

- For vertical and horizontal surfaces
- Textured to blend with concrete
- Easy water clean up
- Good adhesion
- Simple application
- Shrink and crack resistant
- VOC Compliant in all 50 states



Color :



Light Gray

Name	Size	SIKA SKU #	UPC #
Sikacryl® Ready-Mix Concrete Patch	1 qt.	472189	033 886 079 907



**WOOD FLOOR  
BONDING**

The right side of the image features a collection of wood floor bonding products against a dark brown background. From left to right, there is a dual-cartridge adhesive dispenser with a yellow nozzle, a tube of adhesive, and four buckets of adhesive in various sizes. The buckets are yellow with red and white labels. The text "WOOD FLOOR BONDING" is written in large, white, bold, sans-serif capital letters on the right side of the image.

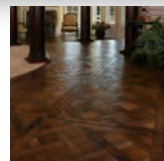
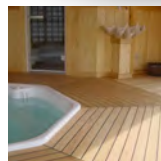
## SikaBond®-T55

One component polyurethane adhesive for wood flooring

A low VOC, one-component, moisture-cured, super strong polyurethane adhesive for full surface wood floor bonding and ceramic tiles. SikaBond®-T55 may be used for solid and engineered wood floors (strips, longstrips, planks, panels, boards), mosaic parquet, industrial parquet, and wood paving (residential) as well as for bonding ceramic tiles to concrete, mortar, and old existing tiles.

### + Advantages

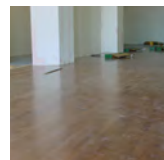
- 400% elongation
- Superior trowelability
- Suitable for in-floor radiant heat installation & footfall sound-dampening adhesive
- Fast curing
- Bonds solid wood up to 8" wide and engineered planks up to 14" wide directly to concrete
- Eliminates sleepers and plywood over concrete and gypsum substrates



Color :



Light Tan



Name	Size	SIKA SKU #	UPC #
SikaBond®-T55	5 gal.	106610	033 886 002 448

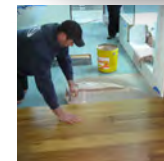
## SikaBond®-T35

Trowel-applied, polyurethane wood flooring adhesive

A one-component, moisture cured polyurethane adhesive for full surface bonding of wood flooring. SikaBond®-T35 will tenaciously bond wood to most surfaces, including concrete, plywood, and level and patch underlayments that have been properly prepared. SikaBond-T35 can be used to bond all engineered, solid plank flat milled, shorts up to max 3/4 in. thick, including bamboo, cork and parquet hardwood flooring designed by the hardwood manufacturer.

### + Advantages

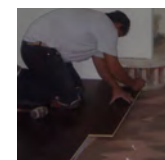
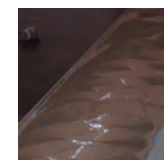
- 170% elongation
- Low VOC & Low odor
- Excellent workability
- Fast curing
- Suitable for in-floor radiant heat installation & for common types of wood flooring
- Crack-bridging



Color :



Tan



Name	Size	SIKA SKU #	UPC #
SikaBond®-T35	5 gal.	174759	033 886 006 392

## SikaBond®-T21

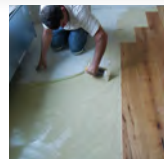
All-in-One wood flooring adhesive, moisture vapor and sound reduction membrane

SikaBond-T21 is a one-component, low VOC, super strong, very low permeability moisture-cure polyurethane adhesive, vapor retarding and sound reduction membrane all-in-one for full surface wood floor bonding.



### Advantages

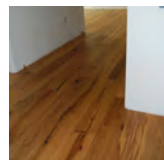
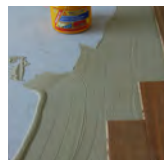
- Permanently elastic : 270% elongation
- Excellent green grab
- Low odor
- Especially good with problematic woods such as beech and bamboo
- Bonds solid wood flooring up to 3/4" thick and 8" wide and engineered planks up to 14" wide directly to concrete



Color :



Light Tan



Name	Size	SIKA SKU #	UPC #
SikaBond®-T21 All-in-One	1 gal.	414788	033 886 054 836

## Sika® Primer MB Kit

Primer and moisture barrier for SikaBond® adhesives

A two-component, low viscosity, epoxy primer for use beneath wood flooring products and floating floors that require protection from subfloor moisture. As a moisture barrier, it helps control osmotic moisture propagation in cementitious substrates with a moisture content up to approx. 6% Tramex. As a substrate consolidator, it can be used on concrete, cement, gypsum screeds and old substrates.



### Advantages

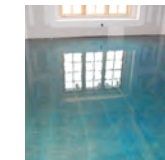
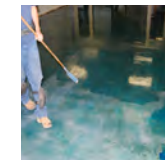
- Solvent-free (100% solids)
- Moisture regulator
- Easy roller applied application that reduces adhesive consumption
- Suitable for use on floors with in-flooring heating
- Excellent penetration and stabilization of the substrate
- Can be used on floating floors



Color :



Blue tint



Name	Size	SIKA SKU #	UPC #
Sika® Primer MB KIT	2.64 gal.	401521	033 886 045 865

## Sika® AcouBond System

Elastic bonding and acoustical dampening for wood floors

The Sika AcouBond System incorporates Direct Bond Technology with acoustic performance. The Sika® AcouBond-System consists of SikaLayer®-03, a 1/8" (3 mm) proprietary specially slotted foam mat, and SikaBond®-T53, a unique permanently elastic, superstrong, sound dampening adhesive that forms a tenacious bond to wood flooring, plywood subfloors, concrete and other common subfloor materials.



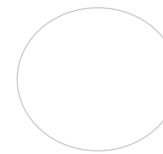
### + Advantages

- Independently tested to - IIC 59 and STC 60 & Independently tested to - FIIC 59 and FSTC 59
- Can reduce overall installation costs up to 30%; easy to install
- Structurally bonds wood flooring to subfloor Suitable for bonding wood floors directly onto old ceramic tiles
- SikaBond-T53 bonds solid wood flooring up to 8 in. (18 cm) wide and engineered planks up to 14 in. (36 cm) wide directly to concrete substrates. No limitations on maximum wood length.
- Eliminates the extensive labor of installing cork underlayments
- No need for sleepers and plywood over concrete- and gypsum-based subfloors
- Reduces stress on the substrate
- Innovative walk-on work method

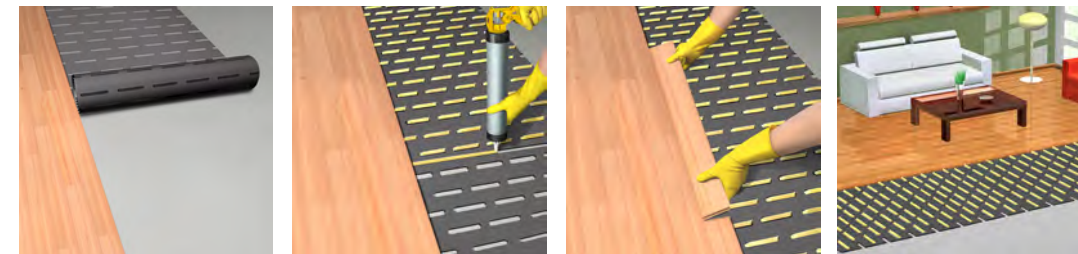
## Sika® AcouBond System

Elastic bonding and acoustical dampening for wood floors

Color :



White



Name	Size	SIKA SKU #	UPC #
SikaBond®-T53 (solid wood / wide planks)	Case of 20 x 20 oz. sausages	<b>91075</b>	033 886 003 834
SikaLayer®-03 Acoustic Mat	roll	<b>108149</b>	033 886 003 841





**BUILDING TRUST**

[usa.sika.com/retail](http://usa.sika.com/retail)