

#CLASS 150 BLACK & GALVANIZED MALLEABLE IRON PIPE FITTINGS

- Meets or exceeds all applicable ASTM & ANSI/ASME standards
- Sizes from 1/8" through 4" diameters
- 100% pressure tested before leaving the factory
- UL & FM certified
- Galvanized are certified to NSF 61 & Lead Free Law

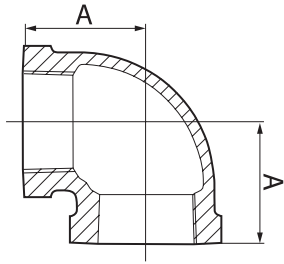


**NSF61-4
NSF372**

STANDARD	AMERICAN
DESIGN	ANSI/ASME B 16.3 ANSI/ASME B 16.14 ANSI/ASME B 16.39
THREAD	ANSI/ASME B 1.20.1
MATERIAL	ASTM A197
GALVANIZING	ASTM A153
TYPE	BANDED



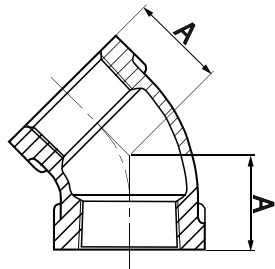
90° Elbow



Size (in)	1/8	1/4	3/8	1/2	3/4	1	1-1/4
A	0.69	0.81	0.95	1.12	1.31	1.50	1.75

Size (in)	1-1/2	2	2-1/2	3	4
A	1.94	2.25	2.70	3.08	3.79

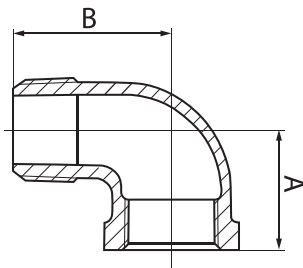
45° Elbow



Size (in)	1/4	3/8	1/2	3/4	1	1-1/4	1-1/2
A	0.73	0.80	0.88	0.98	1.12	1.29	1.43

Size (in)	2	2-1/2
A	1.68	1.95

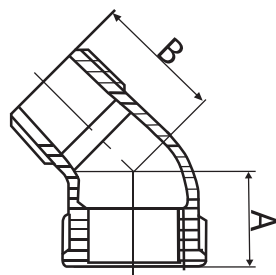
90° Street Elbow



Size (in)	1/8	1/4	3/8	1/2	3/4	1	1-1/4
A	0.69	0.81	0.95	1.12	1.31	1.50	1.75
B	1.00	1.19	1.44	1.63	1.89	2.14	2.45

Size (in)	1-1/2	2	3	4
A	1.94	2.25	3.08	3.79
B	2.69	3.26	4.51	5.69

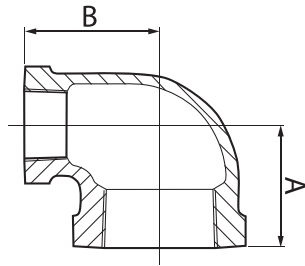
45° Street Elbow



Size (in)	1/4	3/8	1/2	3/4	1	1-1/4	1-1/2
A	0.73	0.80	0.88	0.98	1.12	1.29	1.43
B	0.94	1.03	1.15	1.29	1.47	1.71	1.88

Size (in)	2	2-1/2
A	1.68	1.95
B	2.22	2.57

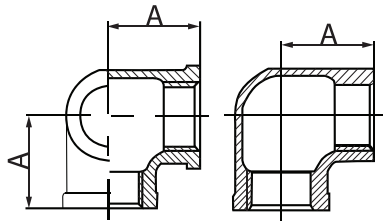
Reducing Elbow



Size (in)	1/4x1/8	3/8x1/4	1/2x1/4	1/2x3/8	3/4x3/8	3/4x1/2	1x1/2	1x3/4
A	0.74	0.88	0.97	1.04	1.12	1.20	1.26	1.37
B	0.76	0.90	0.98	1.03	1.13	1.22	1.36	1.45

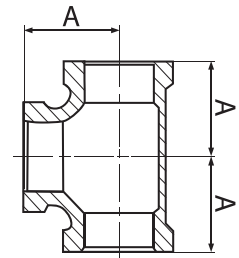
Size (in)	1 ¹ / ₄ x 3/4	1 ¹ / ₄ x 1	1 ¹ / ₂ x 1	1 ¹ / ₂ x 1 ¹ / ₄	2 x 1 ¹ / ₂
A	1.45	1.58	1.65	1.82	2.02
B	1.62	1.67	1.80	1.88	2.16

Side Outlet Elbow



Size (in)	3/8	1/2	3/4
A	0.95	1.10	1.30

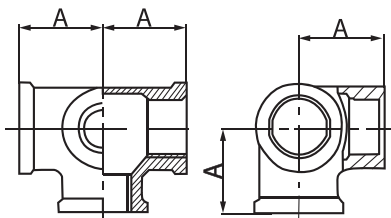
Tee



Size (in)	1/8	1/4	3/8	1/2	3/4	1	1-1/4
A	0.69	0.81	0.95	1.12	1.31	1.50	1.75

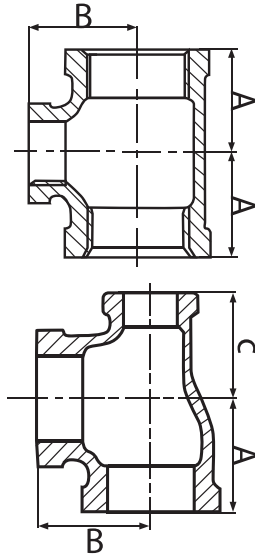
Size (in)	1-1/2	2	2-1/2	3	4
A	1.94	2.25	2.70	3.08	3.79

Side Outlet Tee



Size (in)	3/8	1/2	3/4
A	0.95	1.10	1.30

Reducing Tee



Size (in)	1/2x3/8	3/4x3/8	3/4x1/2	1x1/2	1x3/4	1 1/4 x 1/2	1 1/4 x 3/4	1 1/4 x 1
A	1.04	1.12	1.20	1.26	1.37	1.34	1.45	1.58
B	1.03	1.13	1.22	1.40	1.45	1.53	1.62	1.67

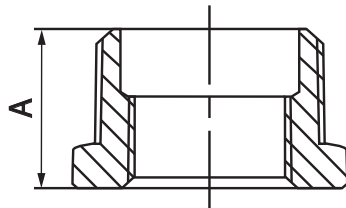
Size (in)	1 1/2 x 1/2	1 1/2 x 3/4	1 1/2 x 1	1 1/2 x 1 1/4	2 x 1/2	2 x 3/4	2 x 1	2 x 1 1/4
A	1.41	1.52	1.65	1.82	1.49	1.60	1.73	1.90
B	1.66	1.75	1.80	1.88	1.88	1.97	2.02	2.10

Size (in)	2 x 1 1/2	2 1/2 x 1 1/2	2 1/2 x 2	3 x 1	3 x 1 1/4	3 x 1 1/2	3 x 2	3 x 2 1/2
A	2.02	2.16	2.39	2.00	2.17	2.29	2.52	2.83
B	2.16	2.51	2.60	2.66	2.74	2.80	2.89	2.99

Size (in)	4 x 2	4 x 2 1/2	4 x 3	4 x 3
A	2.74	3.05	3.30	3.30
B	3.41	3.51	3.60	3.60

Size (in)	3/4x1/2x1/2	3/4x1/2x3/4	1x1/2x3/4	1x1/2x1	1x3/4x3/4	1x3/4x1	1 1/4x1x1	1 1/2x1/2x1	1 1/2x1/2x1 1/2	1 1/2x3/4x3/4	2x1 1/2x2
A	1.20	1.31	1.37	1.50	1.37	1.50	1.58	1.73	1.94	1.50	2.25
B	1.22	1.31	1.45	1.50	1.45	1.50	1.67	1.81	1.94	1.69	2.25
C	1.12	1.22	1.22	1.40	1.31	1.45	1.50	1.34	1.66	1.26	2.16

Bushing



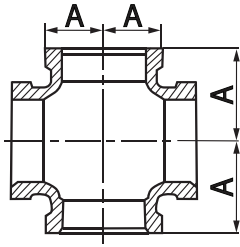
Size (in)	1/4 x 1/8	3/8 x 1/8	3/8 x 1/4	1/2 x 1/8	1/2 x 1/4	1/2 x 3/8	3/4 x 1/8
A	0.58	0.64	0.64	0.75	0.75	0.75	0.85

Size (in)	3/4 x 1/4	3/4 x 3/8	3/4 x 1/2	1 x 1/4	1 x 3/8	1 x 1/2	1 x 3/4
A	0.85	0.85	0.85	1.00	1.00	1.00	1.00

Size (in)	1 1/4 x 1/4	1 1/4 x 1/2	1 1/4 x 3/4	1 1/4 x 1	1 1/2 x 1/2	1 1/2 x 3/4	1 1/2 x 1	1 1/2 x 1 1/4	2 x 1 1/2
A	1.08	1.08	1.08	1.08	1.14	1.14	1.14	1.14	1.22

Size (in)	2 x 3/4	2 x 1	2 x 1 1/4	2 x 1 1/2	2 1/2 x 1 1/2	2 1/2 x 2	3 x 2	3 x 2 1/2	4 x 3
A	1.22	1.22	1.22	1.22	1.51	1.44	1.61	1.53	1.72

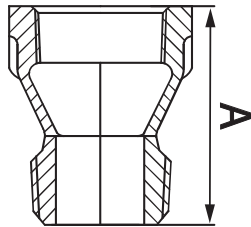
Cross



Size (in)	1/4	3/8	1/2	3/4	1
A	0.81	0.95	1.12	1.31	1.50

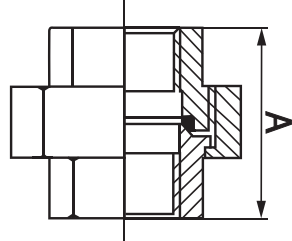
Size (in)	1-1/4	1-1/2	2
A	1.75	1.94	2.25

Extension Piece



Size (in)	1/2	3/4	1
A	1.72	1.82	2.20

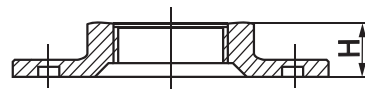
Union



Size	1/8	1/4	3/8	1/2	3/4	1
A	1.26	1.44	1.61	1.72	1.94	2.06

Size	1-1/4	1-1/2	2	2-1/2	3	4
A	2.26	2.41	2.75	3.22	3.50	3.85

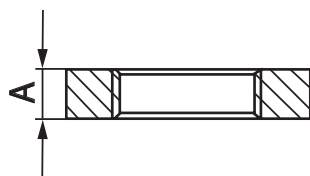
Floor Flange



Size (in)	1/4	3/8	1/2	3/4	1
H	0.47	0.55	0.55	0.63	0.67

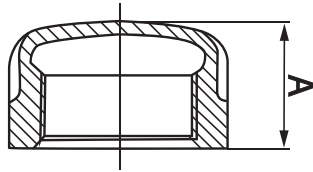
Size (in)	1-1/4	1-1/2	2
H	0.75	0.87	0.99

Locknut



Size (in)	1/2	3/4	1	1-1/4	1-1/2	2
A	0.31	0.34	0.38	0.42	0.47	0.53

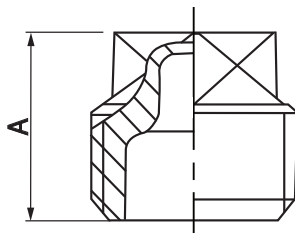
Cap



Size (in)	1/8	1/4	3/8	1/2	3/4	1	1-1/4
A	0.53	0.63	0.74	0.87	0.97	1.16	1.28

Size (in)	1-1/2	2	2-1/2	3	4
A	1.33	1.45	1.70	1.80	2.08

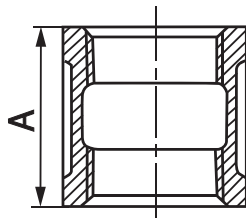
Plug



Size (in)	1/8	1/4	3/8	1/2	3/4	1	1-1/4
A	0.61	0.72	0.79	0.94	1.07	1.25	1.36

Size (in)	1-1/2	2	2-1/2	3	4
A	1.45	1.56	1.81	1.93	2.54

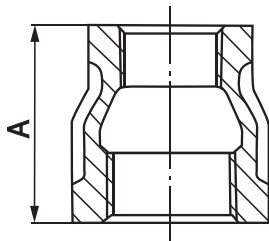
Coupling



Size (in)	1/8	1/4	3/8	1/2	3/4	1	1-1/4
A	0.96	1.06	1.16	1.34	1.52	1.67	1.93

Size (in)	1-1/2	2	2-1/2	3
A	2.15	2.53	2.88	3.18

Reducing Coupling



Size (in)	1/4 x 1/8	3/8 x 1/8	3/8 x 1/4	1/2 x 1/8	1/2 x 1/4	1/2 x 3/8	3/4 x 1/4	3/4 x 3/8
A	1.00	1.13	1.13	1.25	1.25	1.25	1.44	1.44

Size (in)	3/4 x 1/2	1 x 3/8	1 x 1/2	1 x 3/4	1 1/4 x 1/2	1 1/4 x 3/4	1 1/4 x 1	1 1/2 x 1/2
A	1.44	1.69	1.69	1.69	2.06	2.06	2.06	2.31

Size (in)	1 1/2 x 3/4	1 1/2 x 1	1 1/2 x 1 1/4	2 x 1/2	2 x 3/4	2 x 1	2 x 1 1/4	2 x 1 1/2
A	2.31	2.31	2.31	2.81	2.81	2.81	2.81	2.81

Size (in)	2 1/2 x 2	3 x 2	3 x 2 1/2	4 x 2	4 x 3
A	3.25	3.69	3.69	4.39	4.39