



**PRODUCT HIGHLIGHT**

# POWERLAGS®

TRUSS/RAFTER TO PLATE CONNECTION FASTENER



SPAX® engineered fasteners are skillfully designed and tested to increase productivity and keep connections held together stronger for longer.

PowerLags reduce pre-drilling and driving torque by up to 40% while still getting 100% quality and strength – unlike any other conventional lag on the market.

## THE IDEAL REPLACEMENT FOR HURRICANE CLIPS



Truss plate removed for clarity.

**Applications**

- Interior Framing
- Stud/Double Top Plate/ Truss-Rafter Connection
- Double Top Plate/ Truss-Rafter Connection (between studs)

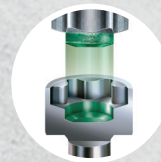


## PRODUCT INFORMATION

The truss/rafter fasteners will be packaged in a high-resolution graphic Contractor Pax™ 50 count carton ready for retail shelves and will include a 2" long T-30 Plus bit.

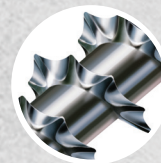
DRIVE BIT	DIAMETER	LENGTH	PART NUMBER	UPC
T-30 Plus	#14	6-1/4"	42110106016045	712216024687

Material - Carbon Steel Coated with Exclusive SPAX® Wirox™ Coating System. Ideal for Interior Applications



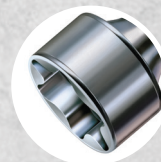
**SPAX® T-STAR PLUS**

Provides superior bit engagement to eliminate camming out and to facilitate single hand, overhead driving.



**PATENTED THREAD SERRATIONS**

Patented thread serrations dramatically increase installation speed.



**CYLINDRIC HEAD**

The new construction fastener has a low splitting effect and pulls flush into the wood.



**UNIQUE 4CUT™ POINT**

For quick and easy installation with no pre-drilling.

**DrJ** TER No. 1912-07  
(Product Data)  
TER No. 1910-02  
(Application Data)



**ENHANCED PRODUCTIVITY  
STRONGER RESULTS  
SATISFIED CUSTOMERS**

**SEE OUR COMPLETE OFFERING AT SPAX.US/PRODUCTS.**

Form No. S-2002 Rev. 3/21



**ALTENLOH, BRINCK & CO. US, INC.**  
2105 COUNTY ROAD 12C • BRYAN OH 43506  
Phone: 888-ABC-SPAX • Email: sales@spax.us