

WORLD'S BEST BOX BEAM LEVELS

Patented
SOLA FOCUS
vial technology



Premium European spirit levels since 1949 – now available in North America.

WHY SOLA HAS THE WORLD'S BEST BOX BEAM LEVELS

The most accurate work demands a product of superior quality. At SOLA, we believe that professional builders know best what works for them. That's why we work closely with you developing our levels to meet those needs. Our goal is to supply the world's best levels – levels that remain consistent, even in the most demanding conditions on construction sites.

Professional tradespeople have been putting their trust in SOLA levels for years. Each component of a SOLA level is designed to make measuring as easy as possible, to help you work more efficiently and to provide you with greater precision.



1 ACCURACY

At SOLA, every spirit level is adjusted individually and undergoes a 100% quality inspection under stringent conditions. Our BIG RED is the most accurate box beam level in the world. With deviations less than 0.3 mm/m (0.017°, 0.0003 in./in.) in standard and less than 0.5 mm/m (0.029°) in inverted position, no other level is more precise.



Standard measuring



Inverted measuring

2 ROBUST PROFILE

Our bestselling, sturdiest level, BIG RED, has an extra strong aluminum profile (890 g/m, 0.61 lbs/ft.) with reinforcing ribs. Among the most rugged levels on the market, the BIG RED profile is engineered to handle relentless use and accidental abuse without losing its shape and compromising your work.



BIG RED Profile



Profile thickness

3 END CAPS

Two shock-absorbing end caps protect the level in case of a fall or shock. Equipped with an anti-slip surface, our BIG RED and DIGITAL LEVEL allow for convenient positioning and a secure grip of the level on the measured surface. The level can be held securely with one hand when marking.



Shock-absorbing end caps



Anti-slip surface

4 MILLED EDGES

To make sure you always get the best leveling results, our BIG RED levels come with only one milled bottom surface. By designing our levels around a single measuring surface, we are able to achieve our extraordinary accuracies. The milled surface is a cue for you so that you use this precision tool in its optimal orientation.



Milled surface



Milled surface with magnet

5 HANDLES

All BIG RED levels 32 inches and longer come with two handles. These ergonomically designed handholds provide a comfortable grip and added convenience on our most precise tools.



Ergonomic shape



Comfortable grip

WHY SOLA HAS THE WORLD'S BEST VIALS

The most important spot on a level is the ½-inch span “between the rings” of the vial. It’s that space that determines if your job is done, or if you need to tweak things a little bit more. As a professional, you look at that space a lot – multiple times a day.

After talking to hundreds of professional builders, we challenged ourselves to come up with a solution to make your daily work easier. The result is the patented SOLA FOCUS vial.

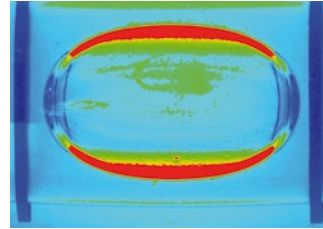
In 2011 we invented this technology and stopped using ring vials in our premium levels. The reason was simple: Over 80% of professional level users we surveyed overwhelmingly preferred the SOLA FOCUS vial. SOLA FOCUS vials provide a 4x higher contrast than ring vials. This allows an easier, faster reading and more precise measuring.*

* Source: results of the analysis “Contrasts of vial bubbles”. V-Research, November 2010.

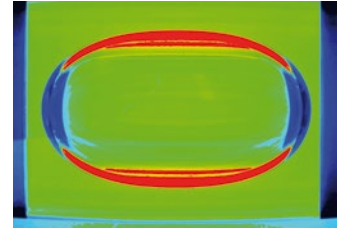


CONTRAST

Compared with ring vials, our FOCUS vials enable users to more quickly, accurately and easily read a level. FOCUS vials are designed with a narrower field of vision and green end caps. Their color is reflected by the leveling bubble, creating unparalleled contrast between the bubbles edge and the FOCUS printing.



Contrast competitor



Contrast SOLA

MAGNIFICATION

Our patented FOCUS vial technology enhances the bubble with a magnification of +60%. Your benefit: The bubble movement is more visible and reading errors are reduced to a minimum – even from a distance.



Standard vial



+60% FOCUS vial

BREAK-RESISTANT ACRYLIC MATERIAL

SOLA FOCUS vials are made of break-resistant acrylic material. Besides its resistance to deformation or breakage, the acrylic is highly UV resistant. Our patented ultrasonic welding of the vials ensures no leaks. With our experience and know-how, we can make the limited lifetime warranty with confidence.



Acrylic material



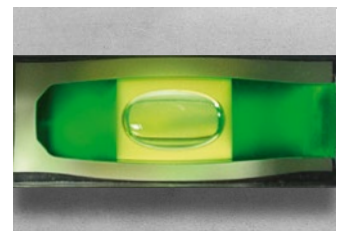
Patented ultrasonic welding

VIAL FLUID

The FOCUS fluid is not affected by electricity and will not fade under sunlight. Furthermore, the strictly guarded composition of our fluid prevents bubbling in case of shock. Our formula performs without problems at a greater range of temperatures than any other level vial.



Shock testing competitor



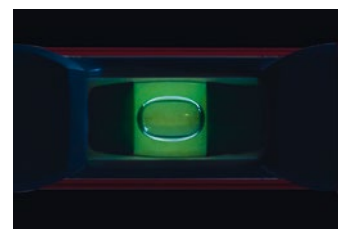
Shock testing SOLA

LUMINOUS BACKING

Every horizontal SOLA FOCUS vial is equipped with a luminous backing beneath the vial. This fluorescent light plate enables easier reading in low light situations without any LEDs.



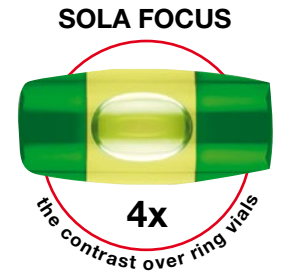
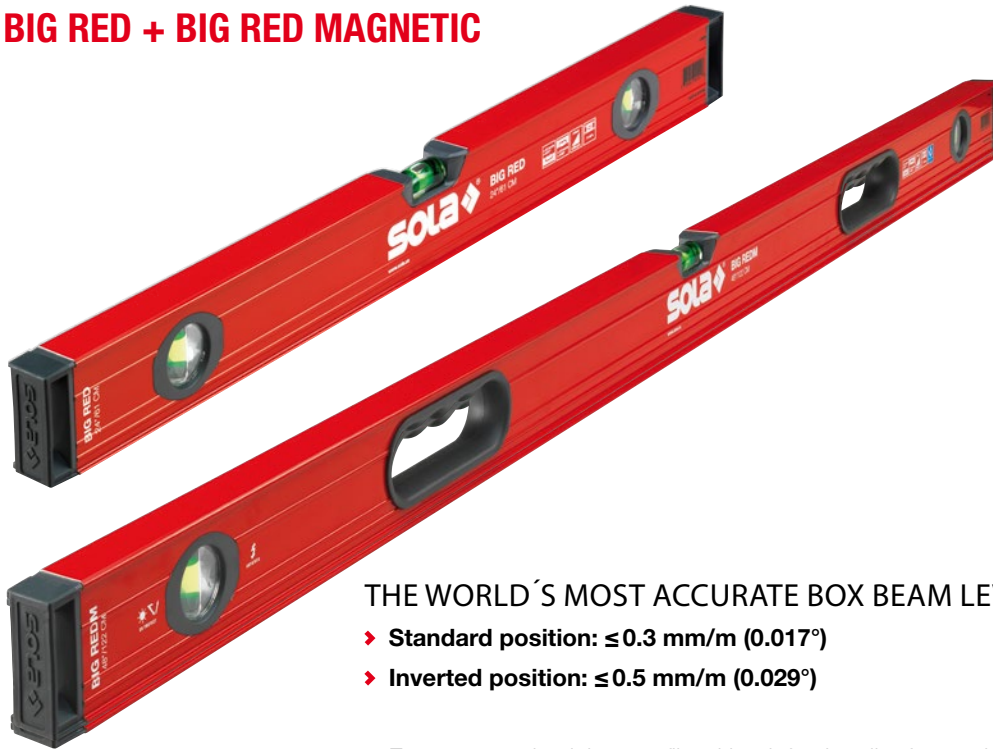
Without luminous backing



Luminous backing

SPIRIT LEVELS

BIG RED + BIG RED MAGNETIC

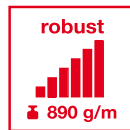


THE WORLD'S MOST ACCURATE BOX BEAM LEVEL

- ▶ **Standard position: $\leq 0.3 \text{ mm/m}$ (0.017°)**
- ▶ **Inverted position: $\leq 0.5 \text{ mm/m}$ (0.029°)**
- ▶ Extra strong aluminium profile with reinforcing ribs for maximum stability
- ▶ Better, faster and more accurate reading with the patented SOLA FOCUS vials
- ▶ Break-resistant acrylic block vials with magnifying lens (+60%) and limited lifetime warranty
- ▶ Better readability in dim light through an optimized SOLA luminous backing
- ▶ Shock-absorbing 2-c end caps provide optimum protection against damage



Break-resistant acrylic block vials with 60% magnification and luminous backing



Extra strong aluminium profile for maximum stability



Shock-absorbing 2-c end caps with anti-slip surface

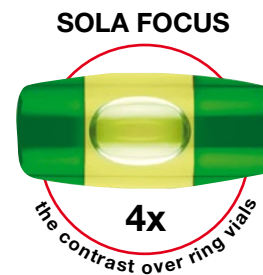


Robust ferrite pole-shoe magnets for a secure grip

Model	Length [in.]	SKU	UPC
BIG RED 16"	16"	LSB16	885829001090
BIG RED 24"	24"	LSB24	885829001106
BIG RED 32"	32"	LSB32	885829001113
BIG RED 36"	36"	LSB36	885829001120
BIG RED 48"	48"	LSB48	885829001083
BIG RED 59"	59"	LSB59	885829001137
BIG RED 72"	72"	LSB72	885829001144
BIG RED 78"	78"	LSB78	885829001151
BIG RED 78"+32" Set	32"+78"	LSB7832	885829001342
BIG RED 96"	96"	LSB96	885829001168

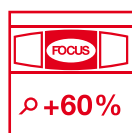
Model	Length [in.]	SKU	UPC
BIG REDM 24"	24"	LSB24M	885829001229
BIG REDM 32"	32"	LSB32M	885829001236
BIG REDM 36"	36"	LSB36M	885829001243
BIG REDM 48"	48"	LSB48M	885829001281
BIG REDM 59"	59"	LSB59M	885829001250
BIG REDM 72"	72"	LSB72M	885829001267
BIG REDM 78"	78"	LSB78M	885829001274
BIG REDM 78"+32" Set	32"+78"	LSB7832M	885829001366

DIGITAL LEVEL

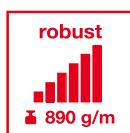


OUR BESTSELLER GOES DIGITAL

- › **Standard position: $\leq 0.3 \text{ mm/m}$ (0.017°)**
- › **Inverted position: $\leq 0.5 \text{ mm/m}$ (0.029°)**
- › Measuring tolerance of our Solatronic module:
 - 0.05° at 0° and 90°
 - 0.1° between 1° and 89°
- › Adjustable inclination display in °, %, in./ft. and mm/m
- › Hold function for storing measured values and for transferring angles
- › Audible mode can be turned on, providing guidance in difficult visible conditions
- › Comfortable reading with a reversible display for inverted measurements
- › Shock-absorbing 2-c end caps provide optimum protection against damage
- › Protection class IP65



Break-resistant acrylic block vials with 60% magnification and luminous backing



Extra strong aluminium profile for maximum stability



Protection against penetrating dust and powerful splash water

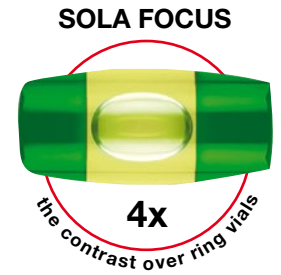


Robust ferrite pole-shoe magnets for a secure grip

Model	Length [in.]	SKU	UPC
DL 24"	24"	LSB24D	885829001328
DL 48"	48"	LSB48D	885829001359

Model	Length [in.]	SKU	UPC
DLM 48"	48"	LSB48DM	885829001335

X PRO

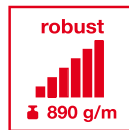


THE WORLD'S MOST ERGONOMIC BOX BEAM LEVEL

- ▶ **Standard position: ≤ 0.5 mm/m (0.029°)**
- ▶ **Inverted position: ≤ 0.75 mm/m (0.043°)**
- ▶ Very high measuring accuracy in standard and inverted position
- ▶ Ergonomic, rigid aluminium profile for precise measurement results
- ▶ Better, faster and more accurate reading with the patented SOLA FOCUS vials
- ▶ Break-resistant acrylic block vials with magnifying lens (+60%) and limited lifetime warranty
- ▶ Better readability in dim light through an optimized SOLA luminous backing
- ▶ Shock-absorbing 2-c end caps provide optimum protection against damage



Break-resistant acrylic block vials with 60% magnification and luminous backing



Extra strong aluminium profile for maximum stability



Shock-absorbing 2-c end caps

Model	Length [in.]	SKU	UPC
X PRO 10"	10"	LSX10	885829001212
X PRO 16"	16"	LSX16	885829001175
X PRO 24"	24"	LSX24	885829001182
X PRO 48"	48"	LSX48	885829001199
X PRO 48"+24"+10" Set	10"+24"+48"	LSX482410	885829001298
X PRO 72"	72"	LSX72	885829001205

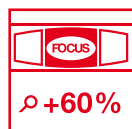
TPM



STRONG AND FOCUSED: OUR MAGNETIC DIE-CAST TORPEDO LEVEL

- ▶ Standard position: $\leq 0.5 \text{ mm/m}$ (0.029°)
- ▶ Inverted position: $\leq 0.75 \text{ mm/m}$ (0.043°)

- ▶ Extremely sturdy aluminum die-cast spirit level with a milled measuring surface and V-groove for scaffolding and steel pipes
- ▶ Better, faster and more accurate reading with the patented SOLA FOCUS vials
- ▶ Break-resistant acrylic block vials with magnifying lens (+60%) and limited lifetime warranty
- ▶ Better readability in dim light through an optimized SOLA luminous backing
- ▶ Strong rare-earth magnet for a high adhesion force

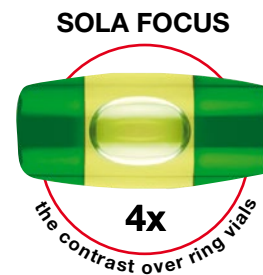


Break-resistant acrylic block vials with 60% magnification and luminous backing



Strong rare-earth magnet for a secure grip

Model	Length [in.]	SKU	UPC
TPM 10"	10"	LSTF10	885829001311

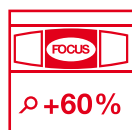


GO! MAGNETIC CLIP



ALWAYS RIGHT AT HAND

- ▶ Standard position: $\leq 0.75 \text{ mm/m}$ (0.043°)
- ▶ Strong rare-earth magnet for a high adhesion force
- ▶ Break-resistant acrylic block vials with magnifying lens (+60%) and limited lifetime warranty
- ▶ Better, faster and more accurate reading through the patented SOLA FOCUS vials
- ▶ Measuring surface with practical V-groove for pipes
- ▶ Compact, lightweight, handy
- ▶ Robust steel belt clip for secure hold

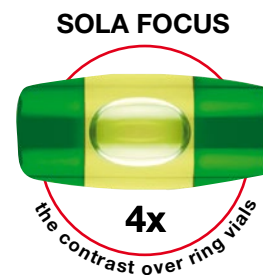


Break-resistant acrylic block vials with 60% magnification and luminous backing



Strong rare-earth magnet for a secure grip

Model	Length [in.]	SKU	UPC
GO! magnetic CLIP	3"	LSGOM	885829001304



ABOUT SOLA

Since 1949 the SOLA brand has meant high precision measuring and marking tools. As experts in measuring and marking, we manufacture a wide range of products for professional builders. Our “passion for precision” means we continuously develop and optimize our products to meet the needs of our most demanding users. Characterized by consistent simplicity, efficiency and precision, SOLA innovations set the standard on a worldwide scale in many applications from civil engineering to interior construction. SOLA is a family-owned Austrian company and known as the market leader in premium spirit levels.

Over 75% of all products are manufactured in Goetzis, Austria, where our headquarters and production facilities are located. This is where our 200 employees work every day to get the world’s best box beam levels into the hands of users in more than 70 countries in the world. Our production has a very high level of vertical integration: All plastic components such as end caps, handles, vial holders, etc. are manufactured on one of our 50 injection molding machines.

To make sure the products meet your expectations as closely as possible, we set high quality standards which are subjected to constant control in our own laboratories and testing facilities. Since June 2018 we are ISO 9001:2015 certified by Quality Austria. This system provides quality assurance for all areas of the company. All levels are built under these high quality assurances, which require multiple human and machine tests. Every single level and its components are tested before leaving our company.

For more information visit www.sola.us



ABOUT THE PARTNERSHIP WITH KESON

Keson and SOLA are both family-owned, third generation companies. In 2018, the two families behind the Keson and the SOLA brands forged an alliance and formed a company, Keson LLC. Both companies are leaders in measuring and marking tools, offer complementary product lines and share very similar values. The goal of this alliance is to provide North America with the most innovative, accurate, durable and easy-to-use measuring and marking products possible.

With a combined 120 years of market experience, the Keson and SOLA alliance builds upon Keson’s U.S. manufacturing, existing distribution network and strong relationships by adding SOLA’s European manufacturing expertise, precision-engineering and industry-leading technology.

Our common commitment to integrating feedback and our uncompromising focus on service enable us to earn and to keep the trust of professional level users and tradespeople.



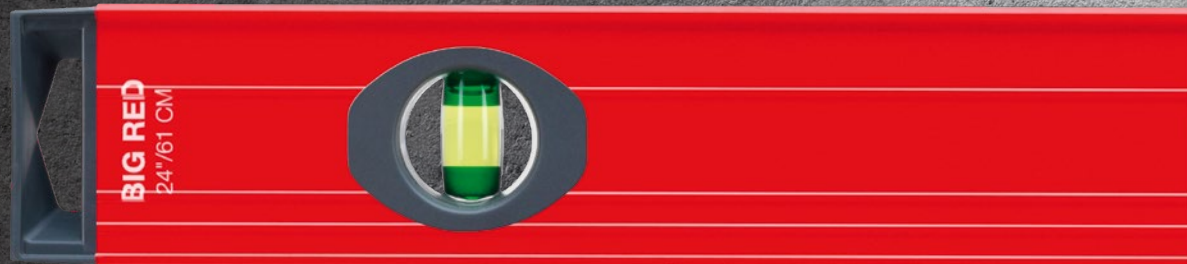
SOLA WORLDWIDE

IKESON 

SOLA 

- Distribution branches
- Stockists





09/2018 | Changes, typing and printing errors reserved.

Now available at:

KESON LLC
810 N. Commerce St.
Aurora, Illinois 60504
800.345.3766



MAKE YOUR MARK®