



## 06B Series

### SCREW SPECIFICATIONS

Screw Gauge	#6
Length	1 1/4" - 1 5/8" - 2"
Recess	#2 Phillips
Head	Bugle
Point	Sharp
Thread Type	Double (15 TPI)
Finish	Gray Phosphate



#2 Phillips



Bugle



Sharp

### Sharp Point Drywall Screw

Self-Tapping screw for attaching Gypsum board to 25-20 gauge steel studs

### APPLICATIONS

- Designed for attaching drywall to light gauge metal studs (21 – 36 mil)



### FEATURES AND BENEFITS

- Phillips recess provides smooth engagement with moderate torque transmission
- Bugle head provides consistent penetration without damaging the paper
- Double threads provide improved holding power and thread-forming capability when driving into steel
- Ultra sharp point quickly penetrates steel reducing drive time
- Gray phosphate is an economical rust inhibitor meant for interior applications
- ICC approval information available in ESR-3558

### INSTALLATION GUIDELINES

- Use a screwdriver with a precise depth-sensitive clutch and speeds of up to 5000 RPM
- Overdriving may cause a weak connection or thread strip-out of the steel
- The drive is finished when the screw is just below the work surface without tearing the paper
- Three full threads must extend past the base metal for an acceptable connection



# 06B Series

## Sharp Point Drywall Screw

Self-Tapping screw for attaching Gypsum board to 25-20 gauge steel studs



### ORDERING INFORMATION

Item Code	Gauge	Length	Thread	Finish	Quantity	Drive Type	Point	Head
06B125P	#6	1 1/4"	15 TPI	Gray Phosphate	1000 Tub	#2 Philips	Sharp	Bugle
06B125PB	#6	1 1/4"	15 TPI	Gray Phosphate	4000 Box	#2 Philips	Sharp	Bugle
06B162P	#6	1 5/8"	15 TPI	Gray Phosphate	1000 Tub	#2 Philips	Sharp	Bugle
06B162PB	#6	1 5/8"	15 TPI	Gray Phosphate	4000 Box	#2 Philips	Sharp	Bugle
06B200PB	#6	2"	15 TPI	Gray Phosphate	4000 Box	#2 Philips	Sharp	Bugle

### TECHNICAL INFORMATION

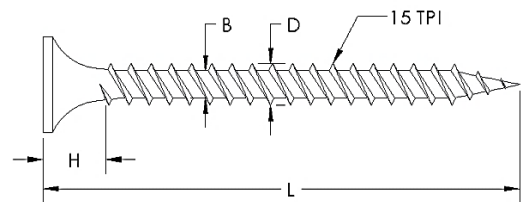
Ultimate Tensile (lbs)*	Torsional Strength (lbs-in)*
603	35

\*Figures represent ultimate average test results. An appropriate safety factor must be applied for design purposes

Finish	Testing Standard	Corrosion Resistance
Gray Phosphate	ASTM B117 Salt Spray Test	Over 24 Hours without red rust

#### Reference Dimensions

Length (L):	1.25, 1.63, 2.00 in
Head Diameter (A):	0.32 in
Head Height (H):	0.18 in
Major Diameter (D):	0.14 in
Minor Diameter (B):	0.09 in
Threads Per Inch (TPI):	15 threads/in



Fasteners comply with ASTM C1002 Type S, as referenced in ICC report ESR-3558. They are in compliance with the 2012 and 2015 International Building code and 2012 and 2015 International Residential code.

