

RELIANCE[®]

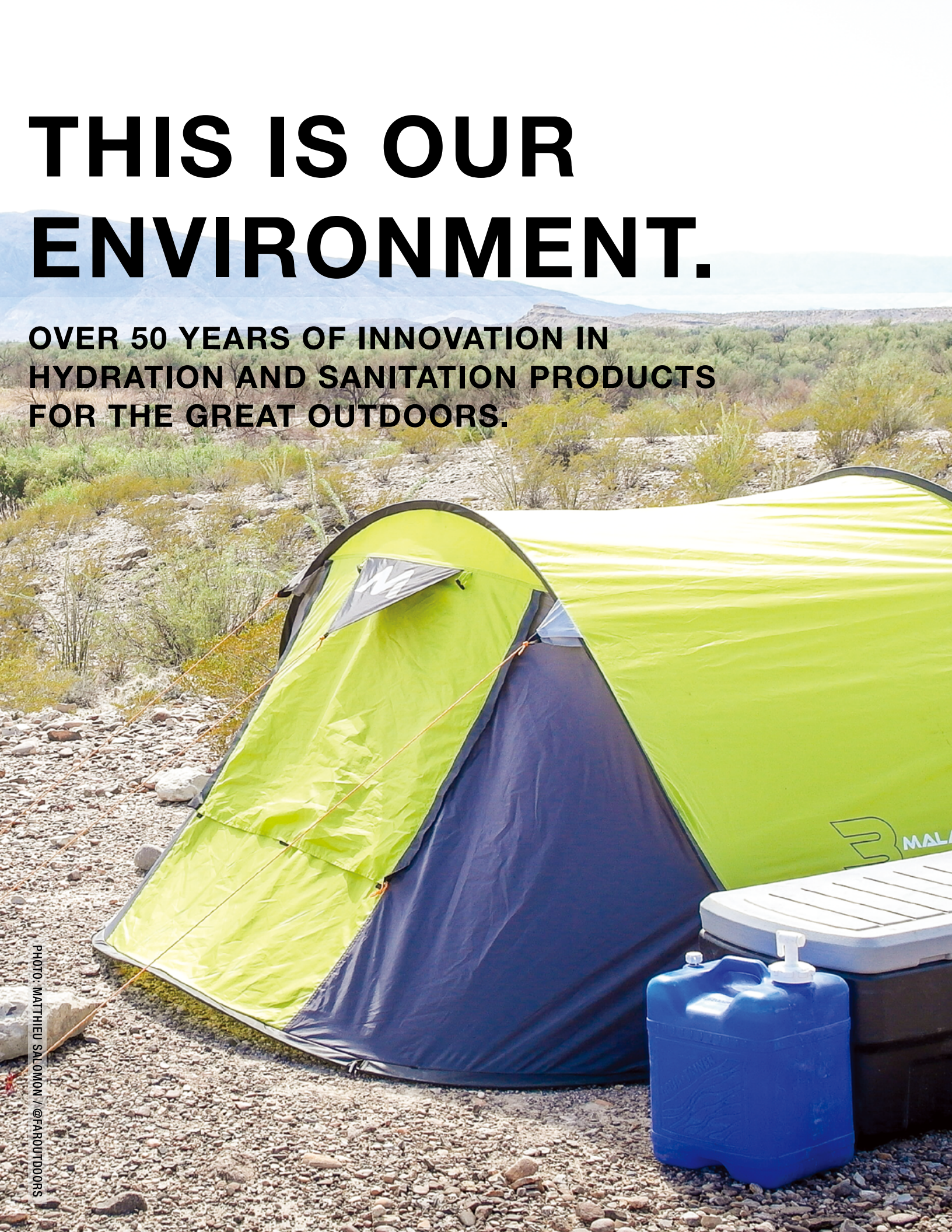
2019 CATALOG

RELIANCEOUTDOORS.COM



THIS IS OUR ENVIRONMENT.

OVER 50 YEARS OF INNOVATION IN HYDRATION AND SANITATION PRODUCTS FOR THE GREAT OUTDOORS.



RIGID WATER CONTAINERS

BPA-free, food-safe, and reusable.

AQUA-TAINER™

- Space-saving rectangular design.
- Molded contour grip.
- Stackable for bulk merchandising.
- Premium screw-on vent.

MODEL	DESCRIPTION	SIZE
9410-03	Aqua-Tainer Water Container	7 gal. / 26.5L
9405-03	Aqua-Tainer Water Container	4 gal. / 15L
9410-24	Aqua-Tainer Half Stack (24)	7 gal. / 26.5L



BEVERAGE BUDDY™

- 4 gal. / 15L easy-to-carry water container.
- Dishwasher safe and fits in most standard refrigerators.
- Large 4" / 100mm cap lets you add ice and clean with ease.

MODEL	DESCRIPTION	SIZE
9620-13	Beverage Buddy	4 gal. / 15L

AQUA-PAK™

- Highly engineered design for simple storage.
- Translucent material for legible liquid level indicator.
- Stackable up to two high when full.

MODEL	DESCRIPTION	SIZE
8910-03	Aqua-Pak Water Container	5 gal. / 20L
8905-03	Aqua-Pak Water Container	2.5 gal. / 10L
8910-30	Aqua-Pak Half Stack (30)	5 gal. / 20L



WATER-PAK™

- Features secondary swivel handle.
- Stackable up to three high when full.

MODEL	DESCRIPTION	SIZE
8820-03	Water-Pak Water Container	5 gal. / 20L
9713-03	Water-Pak Water Container	2.5 gal. / 10L
8820-24	Water-Pak Half Stack (24)	5 gal. / 20L



RHINO-PAK™

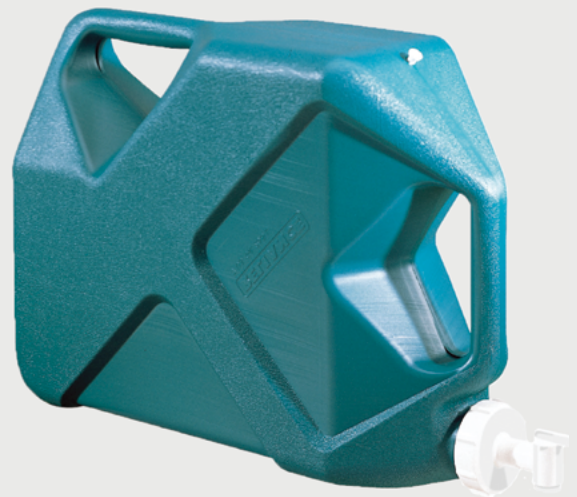
- 33% thicker walls than a standard water container for increased puncture resistance and durability.
- 50% more drop strength than a standard water container.
- Durable spout and vent cap allow for storage on its side.
- Stackable up to four high when full.

MODEL	DESCRIPTION	SIZE
8580-45	Rhino-Pak Heavy Duty Container	5.5 gal. / 21L

JUMBO-TAINER™

- Combines the easy-to-carry shape of a traditional "jerry can" in a more contemporary design.
- Features reliable tap-style spigot and dual grip-through handles.

MODEL	DESCRIPTION	SIZE
8930-03	Jumbo-Tainer Water Container	7 gal. / 26.5L



DESERT PATROL™

- Rugged construction - traditional "jeep" container shape.
- Angled handle for two-handed gripping.

MODEL	DESCRIPTION	SIZE
8580-43C	Desert Patrol Water Container	6 gal. / 23L
8540-03C	Desert Patrol Water Container	3 gal. / 12L



SPOUTS AND SPIGOTS



MODEL	DESCRIPTION
7210-03	Replacement 70mm White Spigot Assembly
7210-13	Replacement 110mm Black Spigot Assembly
7239-00	Rhino-Pak Replacement Spout Assembly
7230-03	Desert Patrol Replacement Spout Assembly

COLLAPSIBLE WATER CONTAINERS

Collapsible, lightweight, BPA-free, and food-safe hydration.

FOLD-A-CARRIER II®

- Foldable, easy-to-pack 5 gallon water container with integrated easy-grip handle.
- Remains flexible even in extreme cold.
- Easy-pour, leak-proof spigot with on-off feature.



MODEL	DESCRIPTION	SIZE
5100-18	Fold-A-Carrier II Natural	5 gal. / 20L
5100-17	Fold-A-Carrier II Blue	5 gal. / 20L

FOLD-A-CARRIER®

- The original, high quality collapsible container.
- Remains flexible even in extreme cold.
- Easy-pour, leak-proof spigot with on/off feature.
- Ergonomic, easy-grip handle.



MODEL	DESCRIPTION	SIZE
2500-13	Fold-A-Carrier (Polybagged)	2.5 gal. / 10L
5000-13	Fold-A-Carrier (Polybagged)	5 gal. / 20L
5000-43	Fold-A-Carrier (Boxed)	5 gal. / 20L
2500-03	Fold-A-Carrier Displayer (24)	2.5 gal. / 10L
5000-03	Fold-A-Carrier Displayer (24)	5 gal. / 20L

AQUA-SAK™

- The most compact 5 gal./20L collapsible water container in the market.
- Collapses down to a 4" square and weighs only 1.8 lbs./0.8 kg.
- Features a comfortable-grip handle and integrated spigot with on-off valve.
- Composed of puncture-resistant food-approved nylon.



MODEL	DESCRIPTION	SIZE
1507-03	Aqua-Sak Collapsible Water Container	5 gal. / 20L



PHOTO: STEVE ARNETT / @SUPERWHITETRAIL



PHOTO AND COVER PHOTO : ANTHONY JOHNSON / @AGJOHNSPHOTOGRAPHY

PORTABLE TOILETS

At-home comfort, no matter where you are.

FLUSH-N-GO™ PORTABLE TOILET SERIES

The Flush-N-Go™ portable toilet series provides the comfort of a plumbed toilet when one isn't available. Each Flush-N-Go™ portable toilet offers a standard toilet seat height of 17", a 325 lbs. weight capacity, and a range of flush and waste holding solutions.

MODEL	DESCRIPTION	SIZE
9210-20	Flush-N-Go 1020T	Bottom holding tank: 5 gal./20L
9233-20	Flush-N-Go 3320	Bottom holding tank: 5 gal./20L
9248-22	Flush-N-Go 4822	Bottom holding tank: 5.8 gal./22L
9248-23	Flush-N-Go 4822e (Electric)	Bottom holding tank: 5.8 gal./22L

1020T



10L/2.5 gal. fresh water tank
 20L/5 gal. holding tank
 Tubular manual flush nozzle

Dimensions:
 16.5" x 16" x 17"
 12 lbs



3320



10L/2.5 gal. fresh water tank
 20L/5 gal. holding tank
 High-end injection piston pump
 Innovative T-Shot flush nozzle directs water
 Waste holding features an exhaust valve and waste level indicator
 Swivel emptying spout for easy disposal and clean-out

Dimensions:
 16.5" x 16" x 17"
 12 lbs

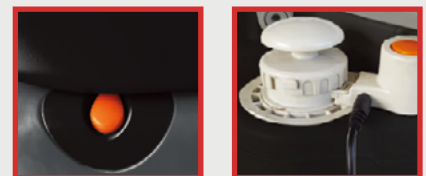


4822 / 4822e



12L/3 gal. fresh water tank
 22L/5.8 gal. holding tank
 High-end injection piston pump
 Innovative T-Shot flush nozzle directs water
 Waste holding features an exhaust valve and waste level indicator
 Swivel emptying spout for easy disposal and clean-out

Dimensions:
 16.5" x 16" x 17"
 13.5 lbs



HASSOCK®

- Lightweight, self-contained toilet.
- Removable inner bucket for waste easy, no-mess waste disposal.
- Features contoured seat for home-like comfort, and inner splash cover/toilet paper holder.
- Compatible with standard Reliance Products Double Doodie waste bags.



MODEL	DESCRIPTION
9844-21	Hassock Portable Toilet



LUGGABLE LOO®

- Economically priced, rugged portable toilet.
- Seat-and-cover combo effortlessly snaps on and off for easy assembly and cleaning.
- Includes 5-gallon (20-liter) bucket.
- Also available in camouflage Hunter's Loo.

MODEL	DESCRIPTION
9853-03C	Luggable Loo Portable Toilet
9863-03C	Hunter's Loo Portable Toilet



FOLD-TO-GO®

- Rugged, lightweight, and compact collapsible portable toilet with integrated handle.
- Folds down to just 5" inches high, making it easy to take anywhere.
- 300 lbs. weight capacity with leg locking system.
- Compatible with standard Reliance Products Double Doodie toilet waste bags.

MODEL	DESCRIPTION
9824-21W	Fold-To-Go Portable Toilet



LUGGABLE LOO® SNAP-ON PORTABLE TOILET SEAT AND COVER

- Hinged seat and cover converts most standard size 5-gallon/19-liter pail into a portable toilet.
- Snap-on feature secures itself to the pail (pail sold separately).
- Features innovative lid lock and handle for easy opening.

MODEL	DESCRIPTION
9881-03C	Luggable Loo Seat & Cover

WASTE BAGS

Simple, no-mess waste disposal.

UR-IN-NEED™

- Single-use liquid waste bag with leak-proof double zip seal and 8 oz. capacity.
- Compact, puncture-resistant outer grey bag for discrete storage.
- Contains Reliance Bio-Gel that instantly converts liquid waste to gel.
- Features a unisex cup with hygienic tab for easy handling.

MODEL	DESCRIPTION
9911-00	UR-in-NEED Urinal Bag - 3 pack



DOUBLE DOODIE™

- Box of six portable toilet waste bags for no-mess, easy clean-up.
- Features inner waste bag with double zip locking for a secure, leak-proof seal.
- The grey outer bag is puncture-resistant to ensure waste containment.
- Available with or without Bio-Gel waste gelatin that solidifies liquid waste and masks unpleasant odors.
- Compatible with Hassock, Luggable Loo and most other portable toilets.

MODEL	DESCRIPTION
2683-03	Double Doodie with Bio-Gel - 6 pack
2683-13	Double Doodie - 6 pack



DOUBLE DOODIE PLUS™

- Larger version of Double Doodie bags for no-mess, easy waste disposal.
- Features inner waste bag with double zip locking for a secure, leak-proof seal.
- The grey outer bag is puncture-resistant to ensure waste containment.
- Contains Bio-Gel waste gelation to solidify liquid waste.
- Compatible with standard household toilets when plumbing is unavailable, Hassock, Luggable Loo and most other portable toilets.

MODEL	DESCRIPTION
2684-03	Double Doodie Plus w/ Bio-Gel - 6 pack



PORTABLE TOILET CHEMICALS AND ACCESSORIES

Easy-to-use and packaged in soluble premeasured pouches.



BIO-GREEN™

- Breaks down human waste and toilet tissue.

MODEL	DESCRIPTION
2652-03	Bio-Green - 12 pouches/box

*Currently not available in Canada



BIO-GEL™

- Turns liquid waste into solid gel.
- Includes measuring scoop.

MODEL	DESCRIPTION
2682-03	Bio-Gel - includes scoop



BIO-BLUE™

- Neutralizes and destroys odors.

MODEL	DESCRIPTION
2642-03	Bio-Blue - 12 pouches/box

*Currently not available in Canada

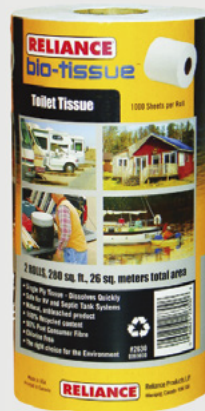


*Currently not available in Canada

BIO-BLUE FLUID™

- Instantly masks odors, leaving a pleasant scent.
- Features a handy liquid level indicator for measuring.
- "No plug" bottle design.
- Safe for all types of plumbing.

MODEL	DESCRIPTION
2616-03	Bio-Blue Fluid - 16oz



BIO TISSUE®

- Safe for RV and septic tank system - dissolves quickly.
- Made of 90% post-consumer fiber.
- Two rolls - 1000 single-ply sheets per roll.

MODEL	DESCRIPTION
2630-13	Bio-Tissue Rolls - 2 rolls

All toilet chemicals are available in a bulk format.

PORTABLE SHOWERS

A convenient way to stay clean.



FLOW PRO™

- Continuous spray with trigger action shower head.
- Features a 6 foot, kink-resistant hose and pressure release valve.
- 8L / 2 gal. water capacity.
- Includes a washable neoprene sleeve with mesh storage pouch and carry strap.

MODEL	DESCRIPTION	SIZE
9316-03	Pressurized Portable Shower	2 gal. / 8L

SOLAR SPRAY

- Heats water up to 100°F [37°C] in 2.5 hours.
- Features kink-resistant hose, ergonomic handle, and smooth-flowing shower nozzle.
- Includes S-hook and cord for easy hanging.

MODEL	DESCRIPTION	SIZE
9321-69	Silver Solar Spray	5 gal. / 20L



SAFETY AND SECURITY



SAFEGO™

PORTABLE SAFE

- Easy-to-use portable personal safe with 88 cubic inches of storage space.
- Constructed of heavy duty, impact and water resistant ABS plastic.
- Combination and key accessible rust-resistant, nickel-plated locks.
- Includes an 18" extendable steel cable for securing to almost anything.

MODEL	DESCRIPTION
9817-04	SAFEGO Portable Safe

**RELIANCE PROUDLY SUPPORTS
HABITAT FOR HUMANITY
THROUGH FUNDRAISING EVENTS
AND VOLUNTEERING.**



RELIANCE

WINNIPEG, MB, CANADA R3H 1A4

1-800-665-0258 | RELIANCEOUTDOORS.COM

@RELIANCEOUTDOOR | #THISISOURENVIRONMENT

THIS PUBLICATION WAS PRINTED ON POST-CONSUMER FIBER PAPER.

