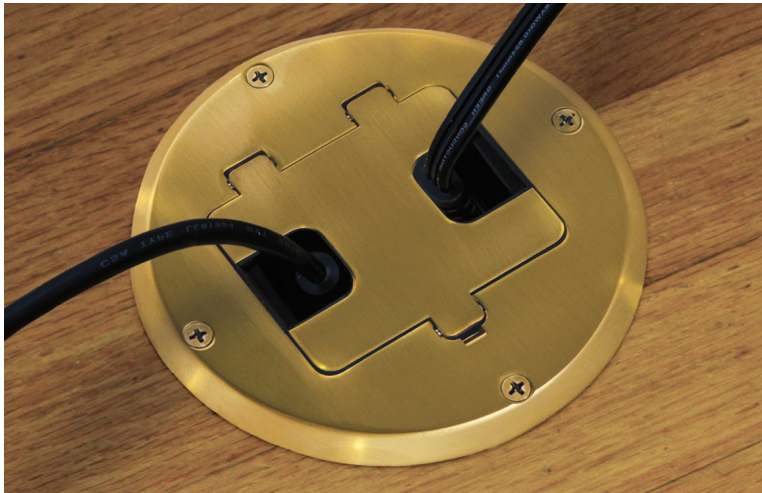




FLOOR BOXES FOR STRUCTURAL WOOD FLOORS

With the Benefit of a Concealed Receptacle

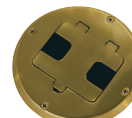


Application

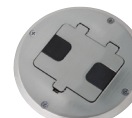
RACO® Wood Floor Boxes allow for the placement of electrical power or a combination of power and voice/data devices.

Features

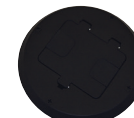
- Recessed taper resistant receptacle allows plug to be concealed
- Protects electrical connection
- Prevents accidental disconnection
- No unsightly plugs on surface of floor
- Four premium finishes - Brass plated, Nickel plated, Stainless and Black
- Complies with NEC® Article 406.11



6239BP
Brass Plated



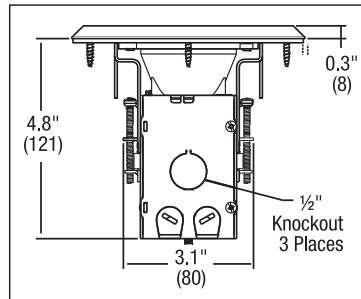
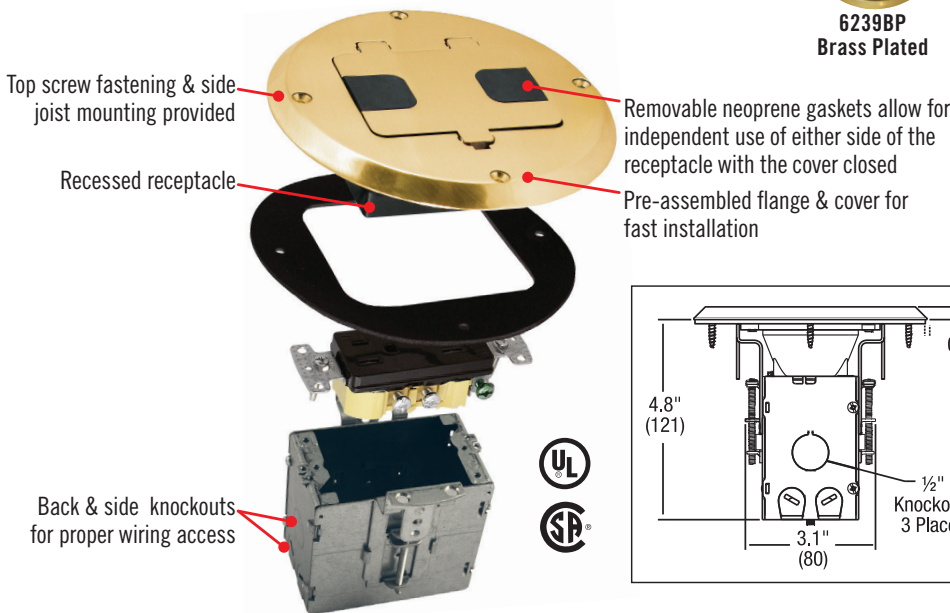
6239NI
Nickel Plated



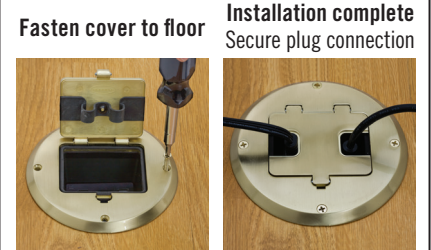
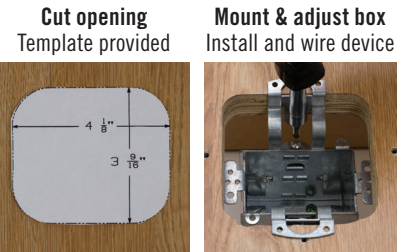
6239BK
Black



6239SS
Stainless



Complete instructions included



Catalog No.	Description	Cover Material	Cover Finish	Pack Qty.	UPC-A Bar Code
6239BP	Decorator duplex receptacle floor box kit	Aluminum	Brass Plated	1	0 50169 94713 5
6239NI	includes steel box, flange and hinged door cover assembly with 15A 125V tamper resistant duplex receptacle;	Aluminum	Nickel Plated	1	0 50169 94714 2
6239NI	designed for installation in wood floors; mounts to sub-floor or joists	Aluminum	Stainless Paint	1	0 50169 94715 9
6239NI		Aluminum	Black Paint	1	0 50169 94712 8