



POOL TOOLS

a quality brand of



**Q.E.P. Co., Inc.**, founded in 1979, is a world class, worldwide provider of innovative, quality and value-driven flooring and industrial solutions. As a leading worldwide manufacturer, marketer and distributor Q.E.P. delivers a comprehensive line of hardwood and engineered wood flooring, flooring installation tools, adhesives and flooring related products targeted for the professional installer as well as the do-it-yourselfer. In addition the company provides industrial tools with cutting edge technology to all of the industrial trades.

The Company continues to build its reputation for offering its customers the most comprehensive flooring installation product line and wood flooring available from one company. The company markets over 5,000 products under various brand names that are well respected in their market niches. Brand names include QEP®, ROBERTS®, Harris Wood®, Capitol®, Vitrex®, PRCI®, Porta-Nails®, Nupla®, HISCO® Ludell® and Elastiment®. Strategically located around the world, Q.E.P. currently has over 1,000,000 square feet of distribution and manufacturing capability located throughout the United States, Canada, Australia, New Zealand, United Kingdom, France and China.

Q.E.P. continually enhances its market leadership positions through selective acquisitions that extend its geographic reach, add proprietary product lines and broaden distribution capabilities, enabling the Company to capitalize on cross-selling opportunities. Additionally, the Company continues to develop and introduce innovative products and ideas for the professional installer in all target markets. Customer Service and Technical Support are key elements in this business and Q.E.P. prides itself on supplying the quality service that customers expect.

# CONTENTS



**STANDING SAWS**

**04**



**TABLE SAWS**

**06**



**DIAMOND BLADES**

**07**



**MIXING TOOLS**

**09**



**TILE CUTTERS**

**11**



**HAND TOOLS**

**12**



**KNEE PADS & SCRAPERS**

**13**



**FLOATS**

**14**



**SPACERS & SPONGES**

**15**



**TROWELS**

**17**

## 830Z 30" Professional Bridge Saw

QEP



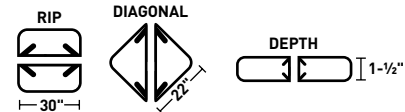
- Ideal for cutting large format tile including ceramic, porcelain, granite, stone and marble tile
- Rips up to 30" tile and can diagonally cut up to 22" tile
- Adjustable pivoting rail offers versatile plunge cutting for miter cuts and rip/angle cuts
- One year limited warranty

### SPECIFICATIONS

Item No	83230Q
Motor	1-1/2 HP / 120V-60Hz / 10.5 Amps
Watts	1362
RPM	3260
Blade Capacity	8"
Arbor	5/8"
Rip Cut	30" Tile
Diagonal Cut	22" Tile
Depth of Cut	1-1/2"
Size	46.3" L x 19.8" W x 57.5" H (w/stand)
Weight	121.3 lbs (w/stand)

### ACCESSORIES INCLUDED

- 8" Black Widow™ diamond blade (#6-8008BW)
- Fold-out stand with wheels
- High volume water pump (#60098)
- Laser cutting guide
- Side extension table
- Angle cutting guide
- Slide out handle and extra wheels
- 2 wrenches



## 24" Bridge Saw

QEP



- Direct drive 1-1/2 HP, 3550 RPM brushless motor is ideal for cutting marble, granite, porcelain, stone and tile\*
- Rips up to a 24" tile and can diagonally cut a 18" tile
- Adjustable pivoting rail allows easy angle positioning from 90° to 45° for fast and consistent miter cuts
- One year limited warranty

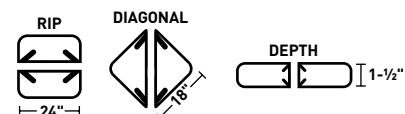
\* for porcelain and hard tiles, we recommend QEP's Black Widow (#6-8008BW)

### SPECIFICATIONS

Item No	83200Q
Motor	1-1/2 HP / 120V-60Hz / 9.2 Amps
Watts	1100
RPM	3550
Blade Capacity	8"
Arbor	5/8"
Rip Cut	24" Tile
Diagonal Cut	18" Tile
Depth of Cut	1-1/2"
Size	37" L x 18" W x 47.5" H (w/stand)
Weight	82.32 lbs (w/stand)

### ACCESSORIES INCLUDED

- Fold-out stand with wheel attachments
- Rear wheel attachments (#63036)
- Convenient storage shelf
- 8" continuous rim wet diamond blade for porcelain (#6-8003Q)
- High volume water pump (#60098)
- Laser cutting guide
- Angle/rip cutting guide
- Handles



## 24" Professional Tile Saw

BRUTUS



- Powerful 3450 RPM motor cuts the toughest marble, granite, stone, porcelain & masonry products, as well as all types of tile\*
- Rips up to a 24" tile and can diagonally cut a 18" tile
- Adjustable tilting head offers quick and easy 45° to 90° miter cuts
- Plunge cutting for interior cut out of tile
- One year limited warranty

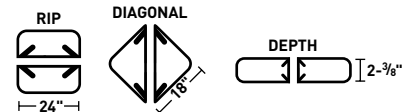
\* for porcelain and hard tiles, we recommend QEP's Black Widow Blade (#6-1008BW)

## SPECIFICATIONS

Item No	61024
Motor	1-1/2 HP / 120 V ~ 60 Hz / 9.5 Amps
Watts	1100
RPM	3450
Blade Capacity	10"
Arbor	5/8"
Rip Cut	24" Tile
Diagonal Cut	18" Tile
Depth of Cut	2-3/8"
Size	40" L x 21.5" W x 48.3" H (w/stand)
Weight	105.8 lbs. (w/stand)

## ACCESSORIES INCLUDED

- Easy fold-out stand with 3" wheels
- 10" continuous rim wet diamond blade (6-1003Q)
- High volume water pump (#60095)
- Side table pull-out extension
- 45° - 90° angle/rip guide
- Rear water tray
- 2 wrenches



## 24" Dual Speed Tile Saw

QEP



- Dual-speed 2 HP, 1750/2450 RPM motor cuts the toughest marble, granite, stone, porcelain & masonry products, as well as all types of tile\*
- Rips up to a 24" tile and can diagonally cut a 14" tile
- Angle/rip guide and miter block make production cuts fast and consistent
- One year limited warranty

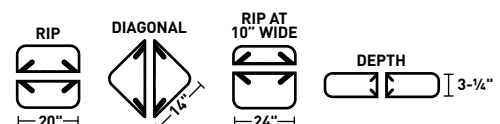
\* for porcelain and hard tiles, we recommend QEP's Black Widow (#6-8008BW)

## SPECIFICATIONS

Item No	60020SQ
Motor	2 HP / 120 V ~ 60 Hz / 15 Amps
Watts	1500
RPM	1750 / 2450 (dual speed)
Blade Capacity	10"
Arbor	5/8"
Rip Cut	20" Tile (center) or 24" Tile (10" wide)
Diagonal Cut	14" Tile
Depth of Cut	3-1/4"
Size	40" L x 22" W x 47" H (w/stand)
Weight	116 lbs. (w/stand)

## ACCESSORIES INCLUDED

- Folding stand
- 10" continuous rim wet diamond blade (#6-1003Q)
- High volume water pump (#60095)
- 45° miter block
- 45° - 90° Angle/rip guide
- Wrenches and two hex keys



## 7" Professional Tile Saw

QEP



### SPECIFICATIONS

Item No	60083Q
Motor	1 HP / 120 V ~ 60 Hz. / 6.25 Amps
Watts	750
RPM	3300
Blade Capacity	7"
Arbor:	5/8"
Rip Cut	Unlimited
Diagonal Cut	Unlimited
Depth of Cut	1-1/5"
Size	22.2" L x 21.6" W x 11" H
Weight	38.68 lbs.

- Direct-drive, 1HP motor is surprisingly quiet but delivers enough power to handle ceramic, slate, marble, granite and porcelain\*
- Large die-cast aluminum cutting table for support of large tiles
- Tilt-up cutting table for precision 15°, 30° and 45° miter cuts
- Adjustable rip and sliding angle guides for accurate production cuts
- Large blade cooling water reservoir reduces refills
- Portable for work in small spaces, handle for easy transport

\* for porcelain and hard tiles, we recommend QEP's Black Widow Blade (#6-7008BW)

### ACCESSORIES INCLUDED

- Laser cutting guide
- Locking rip guide
- Angle cutting guide
- Universal wrench
- 7" continuous rim wet diamond blade (6-7003Q)

## 650XT 7" Tile Wet Saw

QEP



### SPECIFICATIONS

Item No	22650Q
Motor	3/4-Peak HP / 120 V ~ 60 Hz. / 4.8 Amps
Watts	550
RPM	3600
Blade Capacity	7"
Arbor:	5/8"
Rip Cut	Unlimited
Diagonal Cut	Unlimited
Depth of Cut	1-1/4"
Size	20.08" L x 15.74" W x 9.88" H
Weight	23 lbs.

- Powerful 3/4 Peak HP motor for cutting ceramic, slate, marble, granite and porcelain\*
- 8" extension table attached to either side to support larger tiles
- Interior water baffle minimizes water spray and reduces refills
- Tilt-up cutting table for precision 22.5° and 45° miter cuts
- Locking adjustable angle and rip guides for accurate cuts

\* for porcelain and hard tiles, we recommend QEP's Black Widow Blade (#6-7008BW)

### ACCESSORIES INCLUDED

- 7" continuous rim wet diamond blade (#6-7003Q)
- 45° angle guide
- Rip guide
- Universal wrench

## TILE SAWS AT A GLANCE

### Standing Saws

ITEM NO.	DESCRIPTION	SIZE (L x W x H)	WEIGHT (lbs.)	BLADE	ARBOR	HP	AMPS	WATTS	RPM	RIP CUT (Tile Size)	DIAGONAL (Tile Size)	CUTTING DEPTH	WATER PUMP	ACCESSORIES INCLUDED
83230Q	30" Bridge Saw	46.3" x 19.8" x 57.5" (w/stand)	121.3	8"	5/8"	1-1/2	10.5	1362	3260	30"	22"	1-1/2"	#60098	A, B, D, F, G, I, J, K, L, M
83200Q	24" Bridge Saw	37" x 18" x 47.5" (w/stand)	82.32	8"	5/8"	1-1/2	9.2	1100	3550	24"	18"	1-1/2"	#60098	A, B, D, E, G, I, J, K, L
61024	24" Professional Tile Saw	40" x 21.5" x 48.3" (w/stand)	105.8	10"	5/8"	1-1/2	9.5	1100	3450	24"	18"	2-3/8"	#60095	A, B, D, F, G, K, J, L, M
60020SQ	24" Dual Speed Tile Saw	40" x 22" x 47" (w/stand)	116	10"	5/8"	2	15	1500	1750/2450	20"	14"	3-1/4"	#60095	A, B, C, G, H, I, K

### Table Saws

ITEM NO.	DESCRIPTION	SIZE (L x W x H)	WEIGHT (lbs.)	BLADE	ARBOR	HP	AMPS	WATTS	RPM	RIP CUT (Tile Size)	DIAGONAL (Tile Size)	CUTTING DEPTH	WATER PUMP	ACCESSORIES INCLUDED
60083Q	7" Professional Tile Saw	22.2" x 21.6" x 11"	38.68	7"	5/8"	1	6.25	750	3300	Unlimited	Unlimited	1-1/5"	N/A	B, G, H, I, J, K, N
22650Q	650XT 7" Tile Wet Saw	20" x 15.7" x 9.8"	19.2	7"	5/8"	3/4	4.8	550	3600	Unlimited	Unlimited	2-1/4"	N/A	B, F, G, H, K, N

#### ACCESSORY GUIDE:

- |                                     |                                    |                                     |                                   |
|-------------------------------------|------------------------------------|-------------------------------------|-----------------------------------|
| A. Water Pump                       | E. Rear wheel attachments          | I. Handle(s)                        | M. Plunge cut capable             |
| B. Continuous rim wet diamond blade | F. Side extension table(s)         | J. Laser cutting guide              | N. Self contained water reservoir |
| C. Heavy duty legs / fold-out stand | G. Angle/rip cutting guide         | K. Wrench, wrenches and/or hex keys |                                   |
| D. Folding stand w/ locking wheels  | H. 45° miter cutting guide / block | L. Tilting head                     |                                   |

## Continuous Rim

The Q.E.P. diamond blade line offers a blade for every application and budget. Whether your tile project requires the cutting of ceramic, porcelain, marble, granite, glass, slate, concrete pavers or stone, Q.E.P. has a blade that will cut it quickly and efficiently. The high quality of Q.E.P.'s diamond blades is due to our stringent testing and exact specifications assuring the user a wobble-free blade that produces smooth and precise cuts.



### Black Series

General purpose blade for wet or dry cutting of ceramic tile.



### Gold Series

Premium blade for wet or dry cutting of ceramic, porcelain and marble tile.

Item No.	Description	Application	Rim Height	Width	Arbor Size	Max RPM	No. in Case
6-4001Q	4" Continuous Rim - Wet/Dry	Ceramic tile	7mm	.060	7/8"-20mm-5/8"	15000	10
6-7001Q	7" Continuous Rim - Wet/Dry	Ceramic tile	7mm	.060	7/8"-5/8"-DM	8730	10
6-8001Q	8" Continuous Rim - Wet/Dry	Ceramic tile	7mm	.060	7/8"-5/8"-DM	7640	10
6-1001Q	10" Continuous Rim - Wet/Dry	Ceramic tile	7mm	.060	7/8"-5/8"-DM	6115	10
6-4003Q	4" Continuous Rim - Wet/Dry	Ceramic, Porcelain, Marble	7mm	.060	5/8"-20mm-7/8"	15000	8
6-7003Q	7" Continuous Rim - Wet	Ceramic, Porcelain, Marble	7mm	.060	5/8"	8730	8
6-8003Q	8" Continuous Rim - Wet	Ceramic, Porcelain, Marble	7mm	.060	5/8"	7640	8
6-1003Q	10" Continuous Rim - Wet	Ceramic, Porcelain, Marble	7mm	.060	5/8"	6115	8

## Black Widow®

Black Widow Diamond blades are designed for quick cutting of hard tile including porcelain, ceramic, granite and marble, without wobble or chipping. Independent lab test results have proven that Black Widow specialty blades continuously outperform the competition in durability for a longer life and speed of cut, reducing project time.



- Premium-grade, thin-rim diamond blade for fast wet cutting of porcelain, ceramic, granite and marble tile
- Ideal for high speed cutting of hard masonry tile
- Unique diamond-shaped laser cutouts prevent blade wobble and keep blade cooler for a longer life
- 7 mm rim height for a longer life and for increased cutting contact with the blade

Item No.	Description	Application	Rim Height	Width	Arbor Size	Max RPM	No. in Case
6-4008BW	4" BLACK WIDOW®	Ceramic, Porcelain, Marble, Granite - Wet/Dry	7mm	.060	5/8"-20mm-7/8"	15000	5
6-7008BW	7" BLACK WIDOW®	Ceramic, Porcelain, Marble, Granite - Wet	7mm	.060	5/8"	8730	5
6-8008BW	8" BLACK WIDOW®	Ceramic, Porcelain, Marble, Granite - Wet	7mm	.060	5/8"	7640	5
6-1008BW	10" BLACK WIDOW®	Ceramic, Porcelain, Marble, Granite - Wet	7mm	.060	5/8"	6115	5

## Laser Welded, Segmented

Premium long-life contractor-grade segmented blade for fast cutting of brick, concrete block and pavers.



Item No.	Description	Application	Rim Height	Width	Arbor Size	Max RPM	No. in Case
6-4003SG	4" Segmented - Wet/Dry	Brick, Concrete Block, Pavers	7mm	.070	5/8"-20mm-7/8"	15000	10
6-7003SG	7" Segmented - Wet/Dry	Brick, Concrete Block, Pavers	7mm	.085	5/8"-7/8"-DM	8730	10

## Turbo

Premium multipurpose contractor-grade turbo blade for smooth cutting of brick, concrete block, pavers and stone



Item No.	Description	Application	Rim Height	Width	Arbor Size	Max RPM	No. in Case
6-4003TB	4" BRUTUS® Turbo - Wet/Dry	Brick, Concrete Block, Pavers, Stone	7mm	.070	5/8"-20mm-7/8"	15000	10
6-7003TB	7" BRUTUS® Turbo - Wet/Dry	Brick, Concrete Block, Pavers, Stone	7mm	.085	5/8"-7/8"-DM	8730	10

## 7" Glass Tile Cutting Diamond Blade

QEP

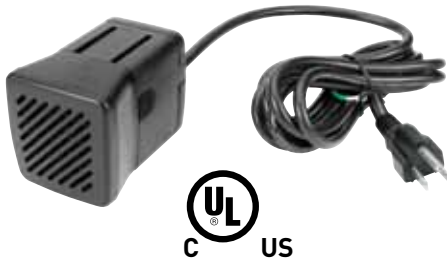


- Premium blade for the wet cutting of glass tile
- Rim height 7 mm
- Blade width .06"
- Maximum RPM of 8730
- 5/8" arbor

6-7006GLQ 7" Glass Tile Cutting Diamond Blade (3/cs)

## Submersible Tile Saw Water Pump

QEP



For 83230Q and 83200Q Tile Saws

- Pumps 60 Gal (227.4L) per hour using 2' tubing (tubing not included)
- Corrosion resistant plastic housing for increased durability
- Removable easy-to-clean filter included

60098 120 V Submersible Tile Saw Water Pump (1/cs)

## Submersible Tile Saw Water Pump

QEP



For 61024 and 60020SQ Tile Saws

- Pumps 54 Gal (203 L) per hour using 2' long tubing (tubing not included)
- Corrosion resistant plastic housing for increased durability
- Extra large intake reservoir with removable easy-to-clean filter

60095 120V Submersible Tile Saw Water Pump (1/cs)

## Power Mixer with Paddle

QEP



Variable speed dial

- Mix mortar, thinset, grout and other viscous materials with minimal effort
- Strong enough to mix cement
- High quality, powerful 1300 Watt motor
- High torque 2- speed motor:  
1st gear: 180-460 RPM  
2nd gear: 300-700RPM
- Male-threaded 2-piece paddle specially designed to completely mix full bucket loads of viscous materials
- Variable speed dial controls RPM's, which prevents splashing at start-up

21660Q Power Mixer w/ Paddle (1/cs)

21661 One-piece replacement paddle (1/cs)

78211 No Spin Mixing Bucket (1/cs)

### SPECIFICATIONS

Item No	21660Q
Motor	120 V ~ 1300 Watts - 2-speed 1st gear: 180 - 460 RPM, 2nd gear: 300 - 700 RPM
Amps	11
Weight	13 lbs.

## Thinset and Grout Mixing Paddle

QEP



- Mixes grouts, thinsets and other setting materials with a minimum of air
- Fits standard 1/2" or 3/8" drill chuck
- Shaft diameter 3/8", length 19-1/2", blade width 8-3/8"

75001Q Thinset and Grout Mixing Paddle (6/cs)

## Mixing Paddle

QEP



- Preferred by professionals for fast and easy mixing of grouts, thinsets and other setting materials
- Fits standard 1/2" or 3/8" drill chuck
- Shaft diameter 3/8", length 22", blade width 5"
- Chrome plated steel

61205Q Mixing Paddle (6/cs)

## No Spin Mixing Bucket

QEP



1-1/2" wide unique notch in base

See video on [QEP.com](http://QEP.com)

- Unique patented notch design prevents spinning while mixing thinset, grout or any viscous material
- Works with any rigid object to keep bucket from spinning including furring strip, PVC pipe and rebar
- Reduces risk of injury

78211 5 Gallon No Spin Mixing Bucket (1/cs)

## Plastic Mixing Buckets

QEP



- Durable white opaque plastic buckets with handles

78200 5 Gallon Plastic Mixing Bucket - White (6/cs)

78208 3-1/2 Gallon Plastic Mixing Bucket - White (1/cs)

78201 Pour Spout Lid for 78200, 78217 & 78300 (1/cs)

## 20" Tile Cutter

BRUTUS



- Cuts wall and floor tile up to 20", 14" diagonally, 1/2" thick
- Equipped with two replaceable 7/8" titanium-coated tungsten carbide cutting wheels
- Heavy duty diecast aluminum base

10552	20" Tile Cutter (1/cs)
10117	7/8" Titanium-Coated Tungsten Carbide Cutting Wheel (3/cs)
10119	7/8" Tungsten Carbide Cutting Wheel (3/cs)

## Compound Tile Nipper

QEP



- Compound mechanism delivers 3 times more force with less effort
- Use to make irregular cuts on all types of tiles, including porcelain
- Durable tungsten carbide tip provides a long cutting life

32035Q Compound Tile Nipper (6/cs)

## Tile Nipper GT

BRUTUS



- Premium quality 8" carbide-tipped tile nipper
- 5/8" carbide tipped offset jaws and center spring
- For use with all types of tiles, including porcelain

32015-6 Tile Nipper GT (6/cs)

## Glass Tile Nipper

QEP



- Cuts glass from 1/32" to 1/4" in thickness
- Ideal for quickly cutting small mosaic pieces of glass and at removing tiny points from glass tile

32010Q Glass Tile Nipper (6/cs)

## China Markers - 2 pack

QEP



- Grease-type pencil for marking glazed materials
- One red and one black

38776Q China Markers - 2 Pack (12/case)

## Dual Grit Rubbing Stone

QEP



- Dual grit surfaces smooth rough edges on freshly cut ceramic & porcelain tile, stone, marble and brick
- Medium 60-grit on one side and fine 80-grit on the other
- Great for dressing diamond blades

10022Q Dual Grit Rubbing Stone (6" x 2" x 1") (6/cs)

## Counter Cleaning Brush

QEP



- 14" solvent resistant polystyrene brush
- Split-topped bristles brush away even the finest particles
- 6" x 2" x 1"

60311 Silver Tip Flagged Counter Cleaning Brush (12/cs)

## Heavy Duty Grouting Gloves

QEP



- Protects hands from the corrosive action of grout, chemicals and other harsh substances
- 100% heavy duty latex is puncture and tear resistant
- One size fits all
- Non-slip ribbing on thumb and finger surfaces

21591Q Heavy Duty Grouting Gloves (24/cs)

## Grout Bag

QEP



- Reinforced tip for smooth application and long life
- Protects hands from grout and other harsh substances
- Made of puncture and tear resistant coated vinyl

76000Q Grout Bag (12/cs)

## Comfort Grip Non-Slip Knee Pads

QEP



- Textured slip and mar resistant face – Perfect for hard floor surfaces including tile, wood and vinyl
- Comfort form-fitting foam padding
- Soft perspiration wicking fabric next to knee for maximum absorption
- Easy on and off adjustable no hassle plastic buckle
- Non-binding single strap will not pinch during extended wear

79630Q Comfort Grip Non-Slip Knee Pads (12/cs)

## Knee Pads

QEP



- Lightweight neoprene knee pads offer all day comfort
- Form-fitting
- Washable and fast drying

79639Q Knee Pads (12/cs)

## Chisel Scraper

QEP



- 3" stainless steel blade
- Multi-functioning tool ideal to remove debris, adhesive and residue from most surfaces
- Hammer end for quick strike use on stubborn material

62970Q Chisel Scraper (6/cs)

## 14" Surface Scraper

QEP



- Flexible 14" blade helps remove old floors and clean up excess debris
- 5' long handle and flex blade made of premium quality carbon steel offer long-lasting durability

20900Q 14" Surface Scraper with Blade (6/cs)

## Gum Rubber Grout Float

QEP



- Non-stick gum rubber ensures smooth application
- 2- rounded corners prevent gouging of grout joints
- 2- square corners ensure complete grout coverage in corners
- Extra thick aluminum backing plate for maximum leverage and applying grout into joints.
- Premium gum rubber laminated to lightweight, closed cell core is built to last

10061Q Gum Rubber Grout Float 9-1/2" x 4" (12/cs)  
10063Q Gum Rubber Grout Float 12" x 4" (6/cs)

## Molded Rubber Grout Float

QEP



- Completely molded rubber pad prevents absorption of materials

10060Q 9-1/2" x 4" Molded Rubber Grout Float (12/cs)

## Red Rubber Float

QEP



- Ideal for textured finishes on concrete or stucco
- Can also be used to apply grout

62413 9-1/2" x 4" Red Rubber Float (12/cs)

## Margin Float

QEP



- 6" x 2"
- Ideal for hard-to-reach areas such as kitchen backsplashes or under bath and kitchen counters

10073Q Margin Float 6" x 2" (12/cs)

## Tile Leveling System

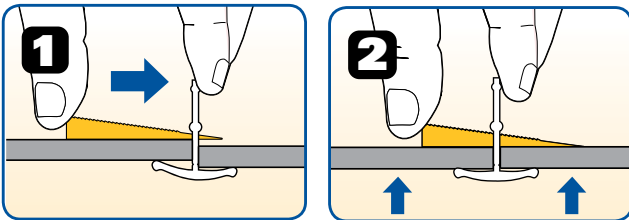
QEP



made in  
**USA**



### Aligns & Holds Tiles for a Smooth Floor



### For perfect tile-to-tile leveling

The patented Tile Leveling Clips system is designed for quick installation and reduces costly call backs by insuring that the finished floor surface is lippage-free.

This time saving system helps adjust the height of the tiles and evenly holds their edges throughout the curing process of the setting material.

- Durable nylon construction for a secure installation
- High-visibility yellow wedges are easy to distinguish on the job site
- Specially designed break-off point on clips for swift removal
- Produces 1/16" joint spacing
- May be combined with regular tile spacers for wider joints - up to 1/4"
- Wedges are reusable

#### Advantages to the installer:

- Very easy to learn and use at any skill level
- Great for use with tiles of varied thickness
- Requires minimal effort to install and remove
- Virtually eliminates lippage
- Prevents tile from moving during the installation
- Speeds up installations
- Less time at the job = more jobs in one day = more profit
- Decreases call-backs due to poor installation

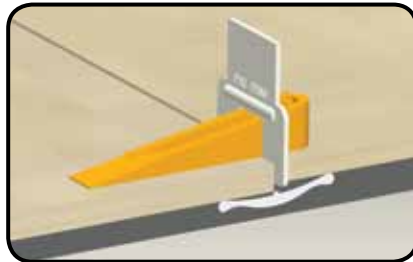
- |        |   |
|--------|---|
| 99702  | Tile Leveling Clips - 4800 pc. Contractor Pack  |
| 99703  | Tile Leveling Wedges - 3600 pc. Contractor Pack |
| 99720Q | Tile Leveling Clips - 96/container (8/cs)       |
| 99725Q | Tile Leveling Wedges - 96/container (8/cs)      |

### Easy to install and remove!



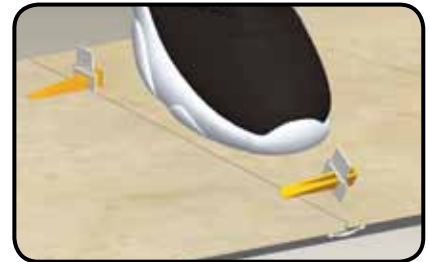
Step 1

Slide two Tile Leveling Clips under the tile and into the mortar approximately 2" from each end of the tile. Place the second tile.



Step 2

Slide the reusable Tile Leveling Wedges into the clips to Level, Align, Space and Hold the tiles.



Step 3

Once the mortar sets, simply kick the clips, forcing them to snap off at the specially designed break-points.

## Tile Leveling System Pliers

QEP



- Efficiently and easily pushes wedge into leveling clip
- Speeds up tile installation when using QEP Tile Leveling System

- |        |                                    |
|--------|------------------------------------|
| 99750Q | Tile Leveling System Pliers (6/cs) |
|--------|------------------------------------|

## Tile Spacers

QEP



made in  
**USA**

- Precision cut for accuracy
- Evenly space tiles for uniform grout lines
- Provide quick, professional looking results
- Works with all sizes of ceramic tile, porcelain, stone and marble

10006Q	1/16" Tile Spacers – bagged	250 Qty.	(24/cs)
10281Q	1/8" Tile Spacers – bagged	1000 Qty.	(12/cs)
10026Q	1/8" Tile Spacers – bagged	250 Qty.	(24/cs)
10316Q	3/16" Tile Spacers – bagged	200 Qty.	(24/cs)
10284Q	3/16" Tile Spacers – bagged	500 Qty.	(12/cs)
10005Q	1/4" Tile Spacers – bagged	200 Qty.	(24/cs)
10282Q	1/4" Tile Spacers – bagged	400 Qty.	(12/cs)
10027Q	3/8" Tile Spacers – bagged	100 Qty.	(24/cs)

## Wedge Tile Spacers

QEP



- Crucial for achieving a level first row of wall tile
- Ideal for maintaining level horizontal grout lines during installation
- Avoids tile slippage on vertical surfaces - will not compress

10285Q Wedge Tile Spacers – 500/Pack (12/cs)

## SUPER Sponge

QEP



- Professional extra large premium sponge for grouting and clean up
- Unique hydrophilated design provides high water holding capacity
- Rounded edges minimize "digging out" or marring of grout
- 7-1/2" x 5-1/2" x 2"

70005Q	XL Grouting Sponges individually bagged	(36/cs)
70005Q-144	XL Grouting Sponges individually bagged in dump display	(144/cs)
70005Q-1	XL Grouting Sponges - Bulk Bale	(500/bulk wrapped bale)
70005Q-6D	XL Grouting Sponges Sponge Value 6 Pack in dump display	(24/cs)

## Scrubbing Sponge

QEP



- Professional hydrophilated grout sponge on one side and scrubbing sponge on the other creates dual usage
- Rounded edges minimize "digging out" or marring of grout
- 7-1/2" x 5-1/4" x 2"

70007Q	XL Scrubbing Sponges individually bagged	(36/cs)
70007QB	XL Scrubbing Sponges - Bulk Bale	(500/bulk wrapped bale)

## Stainless Steel Notched Trowels

QEP



- Rustproof stainless steel blade
- Large, contoured and cushioned grip handles for comfort
- High quality 11" x 4-1/2" trowel designed for the professional installer
- Durable 230mm zinc die-cast shank
- Extra handle-to-shank clearance to allow for complete hand rotation
- Longer shank with 9 rivets. First and last rivet reinforced and welded

49913Q	1/4" x 3/16" V Trowel Notch (12/cs)
49915Q	1/4" x 1/4" x 1/4" SQ Trowel Notch (12/cs)
49916Q	1/4" x 3/8" x 1/4" SQ Trowel Notch (12/cs)
49919Q	1/2" x 1/2" x 1/2" SQ Trowel Notch (12/cs)

## Economy Notched Trowels

QEP



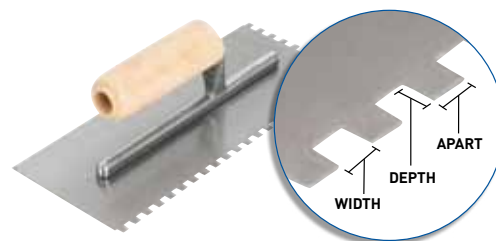
- Hard, cold-rolled steel blade for longer wear
- High-impact black plastic handle
- Quality trowel measuring 9" x 4"

10116Q	1/4" x 3/16" V Trowel Notch (12/cs)
10113Q	1/4" x 1/4" x 1/4" SQ Trowel Notch (30/cs)
10114Q	1/4" x 3/8" x 1/4" SQ Trowel Notch (30/cs)
10120Q	1/2" x 1/2" x 1/2" SQ Trowel Notch (30/cs)

## For Tile, Marble and Stone

Always check adhesive/mortar manufacturer's trowel recommendations before selecting a trowel notch. All Trowels Measure: Width x Depth x Space Apart

Recommended notch sizes by NTCA (National Tile Contractors Association)

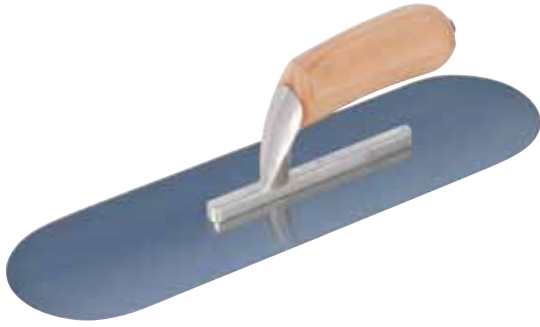


Notch Size	Application	Brand	Comfort Grip (11" Blade)	Economy
1/4" x 3/16" V	For ceramic, metal & aluminum wall tile 6" x 6" up to 12" x 12"	QEP	49913Q	10116Q
1/4" x 1/4" x 1/4" SQ	For thinset application of ceramic tile 8" x 8" or smaller, laminated wood plank flooring, flat milled solid & shorts or plywood	QEP	49915Q	10113Q
1/4" x 3/8" x 1/4" SQ	Thinset application of ceramic tile 8" x 8" up to 16" x 16"	QEP	49916Q	10114Q
1/2" x 1/2" x 1/2" SQ	Thinset or medium bed mortar application of natural stone, quarry tile, pavers, saltillo and ceramic tiles 12" x 12" and larger	QEP	49919Q	10120Q

\* Recommended notch sizes by NTCA (National Tile Contractors Association)

## Blue Steel Pool Trowel

QEP



- Highest grade blued spring steel blade
- Flexible blade bends to almost any curve
- Camel back style wood handle reduces fatigue and increases grip when wet

49750Q 10" x 3" Blue Steel Pool Trowel  
49751Q 12" x 3½" Blue Steel Pool Trowel  
49752Q 14" x 4" Blue Steel Pool Trowel  
49753Q 16" x 4" Blue Steel Pool Trowel

## Stainless Steel Pool Trowel

QEP



- Hardened and tempered stainless steel blade
- Extra short mounting is lightweight but very strong allowing user to flex blade to almost any radius
- Rivets left unground for longer trowel life while flexing blade at very large radius

49760Q 10" x 3" Stainless Steel Pool Trowel  
49761Q 12" x 3½" Stainless Steel Pool Trowel  
49762Q 14" x 4" Stainless Steel Pool Trowel  
49763Q 16" x 4" Stainless Steel Pool Trowel

## Chrome No Burn Pool Trowel

QEP



- Eliminates burn marks
- Extra hard troweling blade for extra long wear life
- Forged aluminum shanks

49781Q 10" x 3" Chrome No Burn Pool Trowel  
49782Q 12" x 3½" Chrome No Burn Pool Trowel  
49783Q 14" x 4" Chrome No Burn Pool Trowel  
49784Q 16" x 3" Chrome No Burn Pool Trowel

## Pointing Trowel

QEP



- For patching cracks and shaping joints in brick, stone and concrete walls

92220Q 5-1/2" Pointing Trowel (12/cs)

## Margin Trowel

QEP



- For patch jobs, hard-to-reach areas and spreading thinset on v-cap or bullnose tile

42103Q 5" x 2" Margin Trowel No Notch (24/cs)

42106-12 5" x 2" SQ-Notch Margin Trowel 1/4" x 1/4" (12/cs)

## Step Tools

QEP



- Made of durable acrylic
- Non-slip wood handle reduces fatigue and offers excellent durability
- 90 degree blade angle

### Nose Tool

49771Q 6" x 5" - 2 1/2" - 1/2" Plexi Glass Nose Step Tool

49770Q 6" x 5" - 2 1/2" - 3/4" Plexi Glass Nose Step Tool

49772Q 6" x 5" - 2 1/2" - 1 1/2" Plexi Glass Nose Step Tool

### Cove Inside Tool

49776Q 6" x 5" - 5" - 1/2" Plexi Glass Cove Inside Tool

49775Q 6" x 5" - 5" - 3/4" Plexi Glass Cove Inside Tool

49777Q 6" x 5" - 5" - 1 1/2" Plexi Glass Cove Inside Tool



1001 Broken Sound Parkway, NW | Suite A  
Boca Raton, Florida 33487

[www.qep.com](http://www.qep.com)

**For more information call 866-435-8665**

