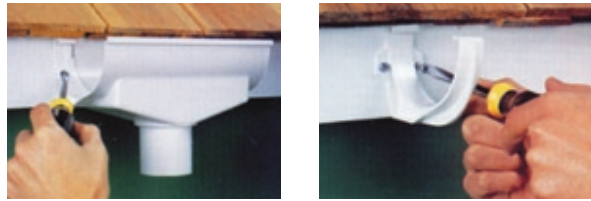


Snap Together - Do-It Yourself
Durable - Easy to Install



STEP 1:
Install drop outlet at predetermined downspout location (for 5" see instructions with unit). Install a hanger at highest point on fascia board at farthest point from drop outlet. Always slope down to downspout location. Mark chalk line and position hangers every 24" (610 mm). Slope should be ¼" per 10 ft. (6 mm per 3 m). End cap may be attached directly to drop outlet if at end of gutter run. If gutter continues around corner position hangers at same height and no closer than 12" (305 mm) from corner.



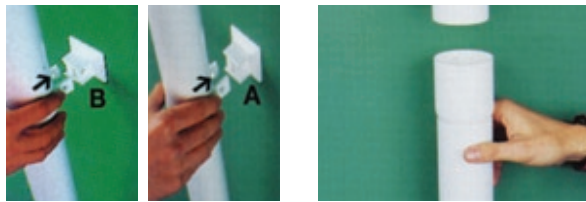
STEP 2:
Lightly sand surfaces to receive cement with 100 grit paper. Surfaces should be clean and dry. Minimum temperature should be 32° F (0° C). Drying time of cement is approximately 30 seconds. Use Plastmo cement only. Install end caps while still on ground. Apply cement to inside of end cap. Small guides will keep it in place while cement dries.



STEP 3:
For corners, sand lightly, apply cement in zig-zag pattern from front to back. Snap gutter section with attached corner and/or end cap into hangers.



STEP 4:
Where two gutter sections join sand surfaces, apply cement on cleaned connectors in zig-zag pattern from front to back. Hook connector onto rear edge of gutter, then press connector onto front of gutter to snap in. Install elbow onto drop outlet. Measure downspout and cut to size between elbows. Install third elbow at bottom of downspout. **Note: Do not cement elbows or downspout.**



STEP 5:
Secure upper and lower pipe holder sockets to wall. Use one pair for each downspout section. Instructions for A and B placement included with part. For a two story house use downspout connector to join two lengths of downspout. **Note: Do not cement.**



STEP 6:
An elbow with an extra piece of downspout may be used to direct water in any direction away from house. A well outlet with well cap for underground drainage is used to complete downspout.



STEP 7:
Make sure all cemented fittings are at least 2" (51 mm) away from hangers.

STEP 8:
On particularly long runs you should install an expansion connector. Only needed when there is no downspout, therefore, no drop outlet, two corners at either end of gutter run and there is more than 25 ft. (7.6 m) of gutter between corners. Instructions included with unit.

Plastmo answers all your Rainware needs with an extensive line of vinyl rainware products manufactured following state-of-the-art methods.

Built on more than 40 years of experience; you can count on the quality and durability of our products.

U-Snap™

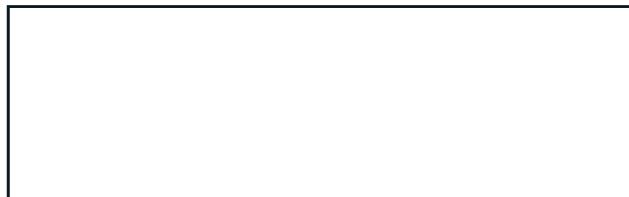
Vinyl Rainware System

K-Snap™

Vinyl Rainware System

Plastmo follows rigorous quality control and testing, meeting and exceeding the most stringent industry and government standards, at all stages of manufacturing.

Plastmo 1-888-793-9462
www.plastmo.com/rainware



- Brown
- Clay
- Gray
- Khaki
- Sandstone
- White

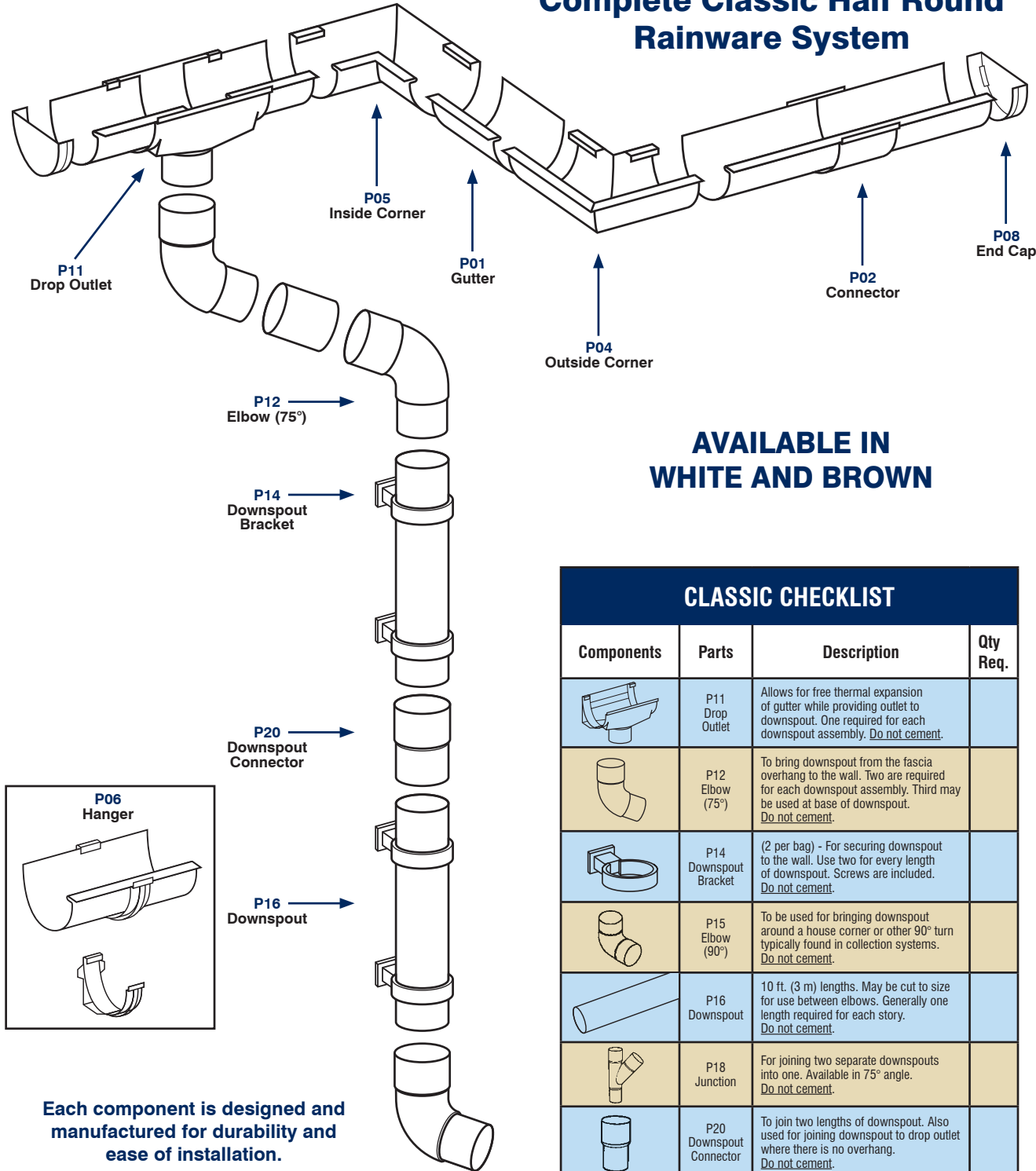
Vinyl Rainware System





- Do it yourself
- Durable
- Easy to install

Complete Classic Half Round Rainware System



AVAILABLE IN
WHITE AND BROWN

Each component is designed and manufactured for durability and ease of installation.

CLASSIC CHECKLIST

Components	Parts	Description	Qty Req.
	P01 Gutter	10 ft. (3 m) lengths. May be cut to fit any size.	
	P02 Connector	For joining gutter sections.	
	P03 Expansion Connector	Must be used on any side where there is 25 ft. (7.66 m) or more between two corner components and no drop outlet. Allows for free expansion of gutter.	
	P04 Outside Corner	For exterior corner joining of gutter sections.	
	P05 Inside Corner	For internal corner joining of gutter sections.	
	P06 Bracket	Firmly supports gutter sections while allowing for free expansion. One required for every 24" (61.5 cm) of gutter. Do not cement.	
	P08 End Cap	For capping open ends of gutter. Fits either end. Also fits on 4" (100 mm) drop outlet.	

CLASSIC CHECKLIST

Components	Parts	Description	Qty Req.
	P11 Drop Outlet	Allows for free thermal expansion of gutter while providing outlet to downspout. One required for each downspout assembly. Do not cement.	
	P12 Elbow (75°)	To bring downspout from the fascia overhang to the wall. Two are required for each downspout assembly. Third may be used at base of downspout. Do not cement.	
	P14 Downspout Bracket	(2 per bag) - For securing downspout to the wall. Use two for every length of downspout. Screws are included. Do not cement.	
	P15 Elbow (90°)	To be used for bringing downspout around a house corner or other 90° turn typically found in collection systems. Do not cement.	
	P16 Downspout	10 ft. (3 m) lengths. May be cut to size for use between elbows. Generally one length required for each story. Do not cement.	
	P18 Junction	For joining two separate downspouts into one. Available in 75° angle. Do not cement.	
	P20 Downspout Connector	To join two lengths of downspout. Also used for joining downspout to drop outlet where there is no overhang. Do not cement.	

CLASSIC CHECKLIST

Components	Parts	Description	Qty Req.
	P21 Well Outlet	For base of downspout to connect with an underground drainage system. Use with well cap. Do not cement.	
	P22 Well Cap	For base of downspout or well outlet. Fits bell end of underground drain tile. 4 1/4" (123.7 mm) inside diameter at base. Cement optional.	
	P24 Cement	Use on surfaces to be permanently "welded". One tube is required for every 100 ft. (30.5 m). Use Plastro cement only. 5 fl. oz (150 ml).	
	P25 Leaf Guard	Keeps gutter free of leaves. 5 ft. (1.5 m) lengths.	
	P26 Leaf Guard Support	Holds leaf guard on fascia. They should be installed at 12" (30 cm) intervals on the fascia board.	
	P27 Leaf Guard Clip	Secures leaf guard to gutter rim. They should be installed at 12" (30 cm) intervals on front edge of gutter.	
	P29 Wedge	For adapting hangers and drop outlet to inward slanted fascia. It will compensate for roof pitches: 7/12 (6/10) and 12/12 (10/10). Use #10-3" (75 mm) pan head screws to mount hangers. Screws not supplied.	
	P30 Wedge	Compensates for roof pitches: 4/12 (3/10) and 6/12 (5/10). Use #10 - 1 3/4" (45 mm) pan head screws (item K31).	
	P31 Screws #10 x 1" (25 mm) 20/bag	For mounting hangers and drop outlet to building. 5/16" Hex, #2 Robertson, and slot drive, plated.	
	K31 Screws #10 x 1 3/4" (45 mm) 20/bag	For mounting hangers and drop outlet while using the wedge to compensate for fascia angle. 5/16" Hex, #2 Robertson, and slot drive, plated.	
	P32 Swing Up Outlet	Diverts water from building; swings up for mowing, etc.	
	P36 Rafter Adapter	For mounting to almost any rafter tail. Screw rafter adapter to side of rafter tail and mount bracket on adapter.	
	P40 Drip edge	Use where shingles do not extend over gutter or where shingles are damaged. 6'6" (2 m) lengths. Do not cement.	