



protect. teach. love.®

Product Guide

Summer/Fall 2018





Who We Are: At PetSafe®, our aim is to strengthen the companionship between pets and people, so they can create their best moments together. We lead the pet industry in the development of innovative products to help improve relationships between pets and their owners. Our products include pet fencing systems, bark control solutions, remote trainers, pet doors, harnesses and head collars, toys, pet fountains and feeders, waste management systems, and products to travel with your pet. We’re headquartered in Knoxville, Tenn., but our company spans more than 50 countries across six continents.

Our team of pet lovers is passionate about developing products that enhance the relationship between pets and their owners. We conduct in-home tests and put every product through real-world conditions to perfect every detail. With the insight of the world’s top trainers, veterinarians and behaviorists, our products stand alone in excellence and value.

Where We Came From: Our parent company, Radio Systems Corporation®, was founded in 1991, selling the first do-it-yourself pet containment system. Over the past 25 years, we’ve grown from a small team with just one product to a team of hundreds of associates working across the globe on dozens of innovative pets solutions. All PetSafe® products are designed to give pet owners the best experience possible with their pets.

How We Work: From the beginning, our founder, Randy Boyd, infused the company with his spirit of collaboration, innovation and a drive to enhance the human-animal bond. Setting the tone with a casual work environment and no private offices, PetSafe® is a relaxed, relationship-driven workplace where we bring our pets to work every day. Bringing our pets to work inspires what we do and drives our product development. We end every day “dog tired” from logging extra hours to ensure pets everywhere are happy, safe and enjoying the best quality of life possible. We wouldn’t have it any other way!

Contents

Pet Fencing	4	Waste Management	56
Avoidance	12	Collars, Harnesses & Leashes	66
Bark Control	18	Toys	76
Training	24	Access & Mobility	96
Doors	30	Batteries	110
Fountains	40	Merchandising Options	112
Feeders	50		

Pet Fencing

Your pets love to run and play. But with the outdoors come the stress of chasing cars, roaming the neighborhood or even running away. You can help protect your pets by keeping them in your yard with a PetSafe® Wireless Fence or In-Ground Fence™ System.

Installing a pet containment system will cost you far less time and money than installing a traditional fence. Our In-Ground Fence™ systems allow you to customize your boundary, while our wireless systems are an easy, portable option to set adjustable boundaries.





Pet Fencing



YardMax® Rechargeable In-Ground Fence™

- Covers up to 10 acres
- Rechargeable receiver collar
- Pawz Away® pet barrier compatibility

PIG00-11115



ADD-A-PET™

Compatible
Receiver Collars
Available



PIG00-11116

Stay+Play Wireless Fence®

- Wireless circular layout
- Covers up to ¾ acre
- Rechargeable receiver collar
- Add unlimited pets

PIF00-12917



ADD-A-PET™

Compatible
Receiver Collars
Available



PIF00-14288



PIF00-13672



PIF00-15002



PIF-275-19

Wireless Fence Systems keep them safe in your yard while giving them the freedom to roam within it.

- Easily sets up in 1 to 2 hours
- Portable and perfect for camping and second homes
- Accommodates an unlimited number of pets with additional collars

Free to Roam Wireless Fence™

- Wireless circular layout
- Covers up to ½ acre
- Portable
- Add unlimited pets

PIF00-15001



Wireless Pet Containment System

- Wireless circular layout
- Covers up to ½ acre
- Portable
- Add unlimited pets

PIF-300



ADD-A-PET™

Compatible Receiver Collars Available				
	PIF00-14288	PIF00-13672	PIF00-15002	PIF-275-19

In-Ground Fence™ Systems keep them safe in your yard at a fraction of the cost of a privacy fence.

- Installation is a weekend project for the average do-it-yourself customer
- Layouts can be customized to create off-limits areas around gardens, pools and certain areas of the yard
- Accommodates an unlimited number of pets with additional collars

Little Dog In-Ground Fence

- Smallest waterproof receiver collar
- Expandable up to 25 acres
- Reflective collar fits neck sizes 6 to 16 in.
- Add unlimited pets

PIG20-11041



In-Ground Cat Fence

- Stretchable collar for added safety
- Expandable up to 25 acres
- The system includes a receiver collar made just for felines
- Add unlimited pets

PCF-1000-20



ADD-A-PET™

Compatible Receiver Collars Available					
	PIG00-13737	PIG19-11042	PCF-275-19	PRF-275-19	PUL-275

Rechargeable In-Ground Fence™

- Rechargeable receiver collar
- Up to a 2 month charge
- Expandable up to 25 acres
- Add unlimited pets

PIG00-14673



Stubborn Dog In-Ground Fence™

- Highest correction intensity
- Includes vibration warning, useful for hearing-impaired dogs
- Expandable up to 25 acres
- Add unlimited pets

PIG00-10777



In-Ground Fence™

- UltraLight™ receiver collar
- Expandable up to 25 acres
- Includes surge protector
- Add unlimited pets

PIG00-13661



Basic In-Ground Fence

- UltraLight receiver collar
- Flexible layouts for yards up to 5 acres
- Includes surge protector
- Add unlimited pets

PIG00-14582



ADD-A-PET™

Compatible Receiver Collars Available					
	PIG00-13737	PIG19-11042	PCF-275-19	PRF-275-19	PUL-275

ADD-A-PET™ Receiver Collars

- Expand your pet fence system with our ADD-A-PET™ receiver collars
- Any number of pets can be protected from leaving your yard as long as they each are wearing a compatible collar
- Wireless receiver collars are required for Wireless Fence Systems. In-Ground receiver collars are required for In-Ground Fence™ Systems



Stay+Play Wireless Fence® Receiver Collar

PIF00-14288



Stubborn Dog Stay+Play Wireless Fence Receiver Collar

PIF00-13672



Free to Roam Wireless Fence™ Receiver Collar

PIF00-15002



Wireless Pet Containment System Receiver Collar

PIF-275-19



YardMax® Rechargeable In-Ground Fence Receiver Collar

PIG00-11116



Rechargeable In-Ground Fence Receiver Collar

PIG00-13737



Little Dog In-Ground Fence Receiver Collar

PIG19-11042



Stubborn Dog In-Ground Fence Receiver Collar

PRF-275-19



Deluxe UltraLight™ Receiver Collar

PUL-275

Accessories



Wire and Flags

- 500 ft. of boundary wire
- 50 training flags
- 2 waterproof splice capsules and wire nuts

PIG00-13769



Wire Break Locator

RFA-450



Training Flags

- 50 training flags

RFA-2



Boundary Wire

- 500 ft. of boundary wire

RFA-1

How much wire do I need?

Acres	Feet of Wire Needed	Additional Wire & Flag Kits Needed
1/4	415	included
1/3	480	Included
1/2	590	1
1	835	1
2	1180	2
5	1870	3
10	2800	5
25	4500	8

Pet Fencing

	Maximum Coverage Area	Pet Size	Fits Neck Sizes	Adjustable Correction Levels	Tone only correction	Portable	Low Battery Indicator	Receiver Collar Battery
Stay + Play Wireless Fence® PIF00-12917	up to ¾ acre	5 lb. +	6 - 28 in.	5	✓	✓	✓	Rechargeable Li-ion
Free to Roam Wireless Fence™ PIF00-15001	up to ½ acre	5 lb. +	6 - 28 in.	5	✓	✓	✓	RFA-67
Wireless Pet Containment System PIF00-300	up to ½ acre	8 lb. +	6 - 28 in.	5	✓	✓	✓	RFA-67
YardMax® Rechargeable In-Ground Fence™ PIG00-11115	up to 10 acres	5 lb. +	6 - 28 in.	5	✓		✓	PIG00-11116
Rechargeable In-Ground Fence™ PIG00-14673	up to 25 acres	5 lb. +	6 - 26 in.	4	✓		✓	Rechargeable Li-ion
Little Dog In-Ground Fence PIG00-11041	up to 25 acres	5 lb. +	6 - 16 in.	4	✓		✓	RFA-188
In-Ground Cat Fence PCF-1000-20	up to 25 acres	6 lb. +	6 - 11 ½ in.	4	✓		✓	RFA-188
Stubborn Dog In-Ground Fence™ PIG00-10777	up to 25 acres	8 lb. +	6 - 28 in.	4	✓ (vibration)		✓	PAC11-12067
In-Ground Fence™ PIG00-13661	up to 25 acres	8 lb. +	6 - 26 in.	4	✓		✓	RFA-67
Basic In-Ground Fence PIG00-14582	up to 5 acres	8 lb. +	6 - 26 in.	4	✓		✓	RFA-67

Avoidance

Protect your home from curious paws with PetSafe® pet barriers. Pet barriers create wireless avoidance zones around household hazards, from trash cans to counter tops. To use, simply place the barrier near the area you would like your pet to avoid, and adjust the boundary to fit your needs.

Our outdoor solutions are designed to blend in with landscaping, and while our indoor systems feature compact designs to fit anywhere in your home.



Avoidance

Pawz Away® Outdoor Pet Barrier

- Barrier transmitter disguised as a rock blends in with landscaping
- Battery powered wireless coverage up to 16 ft. diameter, 8 ft. radius
- Optional wired boundary up to 150 ft.
- Add unlimited pets with extra receiver collars, including YardMax® receiver collars

PWF00-11923



ADD-A-PET™

Compatible Receiver Collars Available	PWF00-13664	PIG00-11116
---------------------------------------	-------------	-------------

Pawz Away® Mini Pet Barrier

- Wireless coverage up to 5 ft. diameter, 2.5 ft. radius
- Waterproof coverage for indoors or outdoors
- Expandable with additional barriers: PWF00-14040
- Add unlimited pets with extra receiver collars, including YardMax® receiver collars

PWF00-13665



ADD-A-PET™

Compatible Receiver Collars Available	PWF00-13664	PIG00-11116
---------------------------------------	-------------	-------------



Pawz Away® Indoor Pet Barrier

- Adjustable range protects areas up to 12 ft. diameter, 6 ft. radius
- Accommodates different off-limits areas for different pets
- Expandable with additional barriers: ZND-1000
- Add unlimited pets with extra receiver collars
- Works with YardMax® receiver collars

ZND-1200

ADD-A-PET™

Compatible Receiver Collars Available	PWF00-13664	PIG00-11116
---------------------------------------	-------------	-------------



Pawz Away Threshold Pet Barrier

- Adjustable barrier blocks pets from stairs and doorways
- Mountable or portable for flexible usage
- For pets less than 40 in. in height
- Works with multiple pets wearing PetSafe® Pawz Away® and YardMax® receiver collars

PWF00-14406

ADD-A-PET™

Compatible Receiver Collars Available	PWF00-13664	PIG00-11116
---------------------------------------	-------------	-------------



ScatMat®

- Touch-Sensitive mat trains pets to avoid off-limits areas
- For dogs and cats of any size
- Extension mats available to increase coverage

Available Options:

Curved 50x12 in - PDT00-13638

Sofa 60x12 in - SKM-C471

Large 48x20 in - SKM-C411

Medium 30x16 in - SKM-C421

Strip 46x3 in - SKM-C441

SSSCAT®

- Set boundaries for your pet(s)
- Motion-activated spray trains pets to stay away from unwanted areas
- Additional replacement cans available

PPD00-16168

Replacement Can - PPD17-16165



Spray Shield® Animal Deterrent Spray

- Discourages aggressive animals
- Stream has a maximum reach of 10 ft.
- Sprays continuously for up to 12 seconds

PTA00-14718 SPRAYSHIELD-CAN



Indoor Radio Fence®

- Keeps pets out of areas inside the house, like the kitchen or nursery
- Adjustable range protects areas up to 20 ft. diameter, 10 ft. radius
- Works with all PetSafe® In-Ground Fence™ Systems except YardMax® or UltraSmart® In-Ground Fence™ receiver collars

ZIRF-100

ADD-A-PET™

Compatible Receiver Collars Available					
	PIG00-13737	PIG19-11042	PCF-275-19	PRF-275-19	PUL-275



POP
CORN

Avoidance

	Maximum Coverage Area	Pet Size	Fits Neck Sizes	Correction Type	Collar Battery	Transmitter Battery	Compatible Receiver Collars
Pawz Away® Outdoor Pet Barrier PWF00-11923	16 ft. in diameter	5 lb. +	6 - 28 in.	Static	(2) 3-volt	(4) D-cell	PWF00-13664 & PIG00-11116
Pawz Away® Mini Pet Barrier PWF00-13665	5 ft. in diameter	5 lb. +	6 - 28 in.	Static	(2) 3-volt	(3) AAA	PWF00-13664 & PIG00-11116
Pawz Away® Indoor Pet Barrier ZND-1200	12 ft. in diameter	5 lb. +	6 - 26 in.	Static	(2) 3-volt	(3) AA	PWF00-13664 & PIG00-11116
Pawz Away® Threshold Pet Barrier PWF00-14406	up to 4 ft. x 5 ft.	5 lb. +	6 - 28 in.	Static	(2) 3-volt	(4) AAA	PWF00-13664 & PIG00-11116
Indoor Radio Fence® ZIRF-100	up to 20 ft. in diameter	Varies	Varies	Static	N/A	AC Powered	All PetSafe® In- Ground Fence™ Receiver Collars, except PIG00-11116
ScatMat®	Varies	All Sizes	N/A	Static	N/A	PAC11-12067 (9 Volt)	N/A
Ssscat® PPD00-16168	3 ft. radius	All Sizes	N/A	Spray	N/A	(4) AAA	N/A
Spray Shield® Animal Deterrent Spray	up to 10 ft.	All Sizes	N/A	Spray	N/A	N/A	N/A

Bark Control

Barking is a natural instinct for your dog. It's also natural for you to want to reduce excessive barking and bring peace back to your home. A PetSafe® bark control device can help quickly teach dogs when it's appropriate to bark and when to hold the chatter.

We offer bark collars with a variety of correction methods designed to discourage your dog from barking, including static correction and spray options. We also offer ultrasonic deterrents that can be used for homes with single or multiple dogs.





Bark Control

Rechargeable Bark Collar & Lite Rechargeable Bark Collar

- 15 levels of automatically adjusting static correction
- Reduces barking and whining
- Waterproof and rechargeable
- Lite version designed for sensitive, timid or small dogs

Standard - PBC00-15999

Lite - PBC00-16446



Elite Little & Big Dog Spray Bark Control Collar

- Citronella or unscented spray disrupts nuisance barking
- Perfect Bark® sound and vibration sensors increase sensitivity

Little Dog - PBC00-11283

Big Dog - PBC00-12724





Bark Control Collar

- 6 levels of correction
- Vibration sensor accurately detects barking
- Automatic safety shut-off

PBC-102



Deluxe Bark Control Collar

- 18 correction levels
- Perfect Bark® sound and vibration sensors for increased sensitivity
- Automatic safety shut-off

PDBC-300



Elite Little & Big Dog Bark Control Collar

- 10 correction levels
- Perfect Bark® sound and vibration sensors for increased sensitivity
- Automatic safety shut-off

Little Dog - PBC00-12726

Big Dog - PBC00-12725



Indoor Bark Control

- Activated automatically by barking or manually by owner
- 25 ft. range
- No collar needed
- Small, portable unit fits any decor

PBC-1000



Mini Indoor Bark Control

- Ultrasonic tone disrupts nuisance barking
- Detects barking up to 25 ft. away
- Small versatile design
- Single or multi-room coverage

Single Room - PBC00-15226

Multi-Room - PBC00-14661



Outdoor Bark Control

- Ultrasonic tone disrupts nuisance barking
- Detects barking up to 50 ft. away

PBC00-11216



Elite Outdoor Bark Control

- Ultrasonic tone disrupts nuisance barking
- Detects barking up to 50 ft. away
- Built-in timer allows you to curb barking at certain times of day

PBC00-12788

Vibration Bark Control Collar

- 10 patterns of randomized vibration keep your dog from getting accustomed to the correction
- Perfect Bark® sound and vibration sensors increase sensitivity

PBC00-12789



Ultrasonic Bark Control Collar

- Ultrasonic tone disrupts nuisance barking
- Lightweight, adjustable collar is water-resistant
- Replaceable CR2032 batteries

PBC00-13925



Gentle Spray® Anti-Bark Collar

- Citronella or unscented spray disrupts nuisance barking
- 25-30 sprays per refill

SNS-BK-C



Anti-Bark Spray Collar

- Uses a burst of spray to deter unwanted barking
- Citronella spray and unscented refills available

PBC00-13912



Bark Control

	Pet Weight	Correction Type	Number of Correction Levels	Auto Adjustable Level	Waterproof	Advanced Bark Detection	Battery
Rechargeable & Lite Rechargeable Bark Collar PBC00-15999 PBC00-16446	8 lb. +	Static	15	✓	✓	✓	Rechargeable Li-ion
Elite Little & Big Dog Spray Bark Control Collar PBC00-11283 PBC00-12724	Little Dog up to 55 lb. Big Dog 8 lb. +	Spray	1		✓	✓	RFA-188
Elite Little Dog Bark Control Collar PBC00-12726	Up to 55 lb.	Static	10	✓	✓	✓	RFA-188
Elite Big Dog Bark Control Collar PBC00-12725	40 lb. +	Static	10	✓	✓	✓	RFA-188
Bark Control Collar PBC-102	8 lb. +	Static	6	✓	✓		RFA-67
Deluxe Bark Control Collar PDBC-300	8 lb. +	Static	18	✓	✓	✓	RFA-67
Ultrasonic Bark Control Collar PBC00-13925	8 lb. +	Ultrasonic	1	✓		✓	(2) RFA-35-11 (not included)
Mini Indoor Bark Control PBC00-14661 & PBC00-15226	All	Ultrasonic	1				(4) RFA-35-11 (2) RFA-35-11
Indoor Bark Control PBC-1000	All	Ultrasonic	1				PAC11-12067 (not included)
Outdoor Bark Control PBC00-11216	All	Ultrasonic	1		Weatherproof		PAC11-12067 (not included)
Elite Outdoor Bark Control PBC00-12788	All	Ultrasonic	1		Weatherproof		PAC11-12067 (not included)
Gentle Spray® Anti-Bark Collar SNS-BK-C	All	Spray	1				RFA-18
Anti-Bark Spray Collar PBC00-13912	All	Spray	1				RFA-18-11
Vibration Bark Control Collar PBC00-12789	8 lb. +	Vibration	10		✓	✓	RFA-188

Training

We may love our dogs unconditionally, but that doesn't mean we love everything they do. Whether your pup charges the door when company comes over or just won't listen when you say "come", PetSafe® brand has the right solution to fit your training style and pet temperament.

Remote trainers allow you to teach your dog commands and discourage nuisance behaviors with the push of a button, while clicker training supplies allow you to reward your dog for positive behaviors.



Training

Lite Remote Trainers

- 100, 300, and 600 yard options
- Easy-to-use ergonomic remote with two-button design
- Great for dogs with a sensitive or timid personality
- Includes tone, vibration and 15 levels of static stimulation
- Waterproof and rechargeable

100 Yards - PDT00-16030

300 Yards - PDT00-16024

600 Yards - PDT00-16027



Smart Dog® Trainer

- Train your dog with your smartphone
- Includes tone, vibration and 15 levels of static stimulation
- Rechargeable, waterproof training collar

PDT00-15748



*Smartphone not included



Create a happy and safe home for your pet with PetSafe® Remote Trainers.

- Reinforce desirable behaviors and stop unwanted behaviors such as jumping, barking and digging
- Accommodates more than one pet with additional collars



Remote Trainers

- 100, 300, 600 and 900 yard options
- Easy-to-use ergonomic remote with two-button design
- Includes tone, vibration and 15 levels of static stimulation
- Waterproof and rechargeable

100 Yards - PDT00-16126

300 Yards - PDT00-16117

600 Yards - PDT00-16120

900 Yards - PDT00-16123



Collarless Ultrasonic Remote Trainer

- Range of up to 30 ft.
- Positive and negative tones
- Battery included

PUPT-100-19

Spray Commander™ Trainer

- Range of up to 250 ft.
- 2 levels of spray plus training tone

PDT00-13913



Vibration Remote Trainer

- Range of up to 100 yards
- 16 levels of vibration plus training tone

PDT00-14678



	Correction Type	Pet Weight	Range	Adjustable Correction Levels	Tone Training Option	Receiver Battery	Transmitter Battery
Remote Trainer PDT00-16126, PDT00-16117, PDT00-16120, PDT00-16123	Static	8 lb. +	100, 300, 600, 900 Yards	15	✓	Rechargeable	Rechargeable
Smart Dog® Trainer PDT00-15748	Static	8 lb. +	75 Yards	15	✓	Rechargeable	N/A
Lite Remote Trainer PDT00-16030, PDT00-16024, PDT00-16027	Static	8 lb. +	100, 300, 600 Yards	15	✓	Rechargeable	Rechargeable
Collarless Ultrasonic Remote Trainer PUPT-100-19	Ultrasonic	All	30 ft.	N/A	2 Tones	N/A	PAC11-12067
Spray Commander™ PDT00-13913	Spray	8 lb. +	250 ft.	2	✓	(1) RFA-18	(1) RFA-18
Vibration Remote Trainer PDT00-14678	Vibration	All	100 Yards	16	✓	(1) RFA-35-11	(2) RFA-35-11



Training Accessories

Clik-R™ Clip

- Easily attaches to any standard nylon leash up to 1 in. wide
- No-slip rubber coating
- Clicker training and use guide included

PTA00-13976



Clik-R™

- Handheld clicker with finger holder
- Clicker training and use guide included
- Available in bulk or retail packaging

Retail Packaging - CLKR-RTL

Bulk, No Packaging - CLKR-BULK



Muzzle

- Inhibits nipping, biting and barking, while still allowing for panting
- Padded for comfort and adjustable at neck and snout
- Ideal for vet visits, grooming and reactive dogs

Small - MUZ-S-BLK

Medium - MUZ-M-BLK

Large - MUZ-L-BLK

Extra Large - MUZ-X-BLK



Pet Size	Snout Measurement
Small	7-8 ¼ in.
Medium	7 ¾-9 in.
Large	8 ¾-10 ¾ in.
Extra Large	10-12 in.

Treat Pouch Sport

- Unique hinge allows the pouch to stay open
- Lots of storage
- Includes a belt clip and detachable/adjustable belt
- Available in mini size, 25% smaller than original

Black - PTA00-13748

Red - PTA00-13750

Cadet Blue - PTA00-13751

Mini (Black) - PTA00-14686



Pet Doors

Give your dog or cat the freedom to come and go as they please with a PetSafe® pet door. No matter the size of your pet or style of your home, we have a solution that will give independence to everyone in your home.

PetSafe® conventional and wall-entry pet doors can be installed in standard doors or walls, while sliding door inserts install easily in a sliding glass door track to give your pet access to the yard or patio. Our programmable electronic doors let you control access, so you don't have to worry about any unexpected visitors.



Pet Doors



Electronic SmartDoor™

- SmartKey™ product worn by your pet locks and unlocks the pet door
- Add up to four more keys

Small – PPA11-10711

Large – PPA11-10709



Includes 1 SmartKey
PAC11-11045



Installation video available at www.youtube.com/petsafebrand

Size	Flap Opening Size	Cut-Out Size	Outer Frame Size	Replacement Flap Number	Accessories Available
Small	5 1/2 x 7 7/8 in.	8 3/8 x 14 3/4 in.	9 x 15 5/8 in.	MPA00-12830	Wall Conversion Kit MPA11-12019
Large	11 x 16 in.	15 5/8 x 23 1/4 in.	16 1/8 x 23 5/8 in.	MPA00-12829	Wall Conversion Kit MPA11-12020



Wall Entry Aluminum Pet Door

- A pet door for exterior walls including siding, stucco and brick
- Aluminum frame with durable plastic, telescoping tunnel and energy efficient, double-flap system

Small – PPA11-10915

Medium – PPA11-10916

Large – PPA11-10917



Installation video available at www.youtube.com/petsafebrand

Size	Flap Opening Size	Cut-Out Size	Outer Frame Size	Replacement Flap Number	Accessories Available
Small	5 1/4 x 8 1/8 in.	6 3/8 x 10 1/16 in.	9 1/4 x 13 in.	PAC11-11037	Wall Extension Tunnel MPA00-15039
Medium	8 1/4 x 12 1/4 in.	9 9/16 x 14 5/16 in.	12 1/4 x 17 1/8 in.	PAC11-11038	Wall Extension Tunnel MPA00-15040
Large	10 1/4 x 16 1/4 in.	11 7/16 x 18 1/8 in.	14 1/4 x 21 1/16 in.	PAC11-11039	Wall Extension Tunnel MPA00-15041



Extreme Weather Pet Door™

- The most energy-efficient door with an R-value of 4.78
- Perfect for both hot and cold climates
- Durable door with a 3 flap system that delivers maximum energy efficiency

Small – PPA00-10984

Medium – PPA00-10985

Large – PPA00-10986



Installation video available at www.youtube.com/petsafebrand

Size	Flap Opening Size	Cut-Out Size	Outer Frame Size	Replacement Flap Number
Small	5 1/8 x 8 1/4 in.	6 3/8 x 10 1/8 in.	7 1/2 x 11 in.	PAC11-11037
Medium	8 1/8 x 12 1/4 in.	9 3/8 x 14 in.	10 1/2 x 15 in.	PAC11-11038
Large	10 1/8 x 16 1/4 in.	11 3/8 x 19 in.	12 1/2 x 19 7/8 in.	PAC11-11039



Freedom® Aluminum Pet Door

- Flexible, tinted, adjustable soft flap with magnetic closure
- Easy do-it-yourself installation

Small – PPA00-10859

Medium – PPA00-10860

Large – PPA00-10861

X-Large – PPA00-10862



Installation video available at www.youtube.com/petsafebrand

Size	Flap Opening Size	Cut-Out Size	Outer Frame Size	Replacement Flap Number
Small	5 1/4 x 8 1/8 in.	5 7/8 x 9 3/4 in.	7 3/4 x 11 5/8 in.	PAC11-11037
Medium	8 1/4 x 12 1/4 in.	8 7/8 x 13 3/4 in.	10 3/4 x 15 5/8 in.	PAC11-11038
Large	10 1/4 x 16 1/4 in.	10 7/8 x 17 7/8 in.	12 3/4 x 19 5/8 in.	PAC11-11039
X-Large	13 3/4 x 23 3/4 in.	14 3/8 x 25 1/4 in.	16 1/4 x 27 1/8 in.	PAC11-11040



Plastic Pet Door

- High-impact pet door lets your dog or cat go in and out as he pleases
- Flexible transparent flap pushes opens easily

Small – PPA00-10958

Medium – PPA00-10959

Large – PPA00-10960

X-Large – PPA00-10961



Installation video available at www.youtube.com/petsafebrand

Size	Flap Opening Size	Cut-Out Size	Outer Frame Size	Replacement Flap Number
Small	5 1/8 x 8 1/4 in.	6 3/8 x 10 1/8 in.	7 1/2 x 11 in.	PAC11-11037
Medium	8 1/8 in x 12 1/4 in.	9 1/4 x 14 in.	10 1/2 x 15 in.	PAC11-11038
Large	10 1/8 in x 16 1/4 in.	11 1/4 x 19 in.	12 1/2 x 19 3/4 in.	PAC11-11039
X-Large	13 5/8 x 23 5/8 in.	14 7/8 x 26 1/2 in.	16 x 27 1/4 in.	PAC11-11040



Big Cat Door

- Generously sized pet door for large cats or even small dogs up to 25 lb.
- Fits interior or exterior doors and windows
- 4-Way Lock: open, locked, in-only and out-only

PPA00-11326

Flap Opening Size	Cut-Out Size	Outer Frame Size
7 1/8 x 7 1/4 in.	9 x 9 1/4 in – for non-glass doors 10 3/8 in diameter circle for glass	11 3/8 x 11 3/8 in.



4-Way Locking Cat Door

- 4-Way Lock: open, locked, in-only and out-only
- Extension tunnel also available for wall or door installation
- For interior or exterior use

PPA00-11325

Flap Opening Size	Cut-Out Size	Outer Frame Size	Replacement Flap Number	Accessories Available
6 x 5 1/8 in.	6 5/8 x 6 7/8 in. for non-glass doors 8 3/8 in. diameter circle for glass	9 1/2 x 9 15/16 in.	MPA00-11387	Extension Tunnel 310US



4-Way Locking Interior Cat Door

- For use in bedroom, bathroom, closet and other interior doors
- 4-Way Lock: open, locked, in-only and out-only
- Includes a durable transparent cat flap

P1-4W-11

Flap Opening Size	Cut-Out Size	Outer Frame Size
5 1/2 x 6 1/8 in.	6 5/16 x 6 15/16 in.	7 1/2 x 8 1/8 in.



2-Way Locking Interior Cat Door

- Interior doors used in bedroom, bathroom or closet doors
- 2-Way Lock: open and locked
- For interior use only

CC10-050-11

Flap Opening Size	Cut-Out Size	Outer Frame Size
5 ³ / ₄ x 5 ³ / ₄ in.	6 ⁵ / ₈ x 6 ⁷ / ₈ in.	7 ¹ / ₂ x 7 ⁷ / ₈ in.





Freedom® Patio Panel Pet Door

 Installation video available at www.youtube.com/petsafebrand

- Allows your pet to come and go through your sliding glass door
- Heavy-duty aluminum construction and shatter-resistant tempered safety glass

Product Number	Size	Color	Flap Opening Size	Rise	Outer Frame Size	Replacement Flap Number
76 13/16 to 81 in Tall						
PPA11-13098	Small	Satin	5 1/4 x 8 3/16 in.	1 3/4 in.	8 3/8 x 76 13/16 in. - 81 in.	PAC11-11037
PPA11-13124	Small	White	5 1/4 x 8 3/16 in.	1 3/4 in.	8 3/8 x 76 13/16 in. - 81 in.	PAC11-11037
PPA11-13134	Medium	Satin	8 x 12 3/16 in.	1 3/4 in.	11 3/8 x 76 13/16 in. - 81 in.	PAC11-11038
PPA11-13125	Medium	Bronze	8 1/4 x 12 3/16 in.	1 3/4 in.	11 3/8 x 76 13/16 in. - 81 in.	PAC11-11038
PPA11-13135	Medium	White	8 1/4 x 12 3/16 in.	1 3/4 in.	11 3/8 x 76 13/16 in. - 81 in.	PAC11-11038
PPA11-13121	Large	Satin	10 1/4 x 16 3/8 in.	4 1/4 in.	13 3/8 x 76 13/16 in. - 81 in.	PAC11-11039
PPA11-13128	Large	Bronze	10 1/4 x 16 3/8 in.	4 1/4 in.	13 3/8 x 76 13/16 in. - 81 in.	PAC11-11039
PPA11-13129	Large	White	10 1/4 x 16 3/8 in.	4 1/4 in.	13 3/8 x 76 13/16 in. - 81 in.	PAC11-11039
PPA11-13122	Large-Tall	Satin	10 1/4 x 16 3/8 in.	8 1/4 in.	13 3/8 x 76 13/16 in. - 81 in.	PAC11-11039
PPA11-13131	Large-Tall	Bronze	10 1/4 x 16 3/8 in.	8 1/4 in.	13 3/8 x 76 13/16 in. - 81 in.	PAC11-11039
PPA11-13132	Large-Tall	White	10 1/4 x 16 3/8 in.	8 1/4 in.	13 3/8 x 76 13/16 in. - 81 in.	PAC11-11039
91 7/16 to 96 in Tall						
PPA11-13127	Medium	White	8 1/4 x 12 3/16 in.	1 3/4 in.	11 3/8 x 91 7/16 in. - 96 in.	PAC11-11038
PPA11-13130	Large	White	10 1/4 x 16 3/8 in.	4 1/4 in.	13 3/8 x 91 7/16 in. - 96 in.	PAC11-11039
PPA11-13141	Large-Tall	White	10 1/4 x 16 3/8 in.	8 1/4 in.	13 3/8 x 91 7/16 in. - 96 in.	PAC11-11039

*Adjustable height.



Sliding Glass Pet Door

 Installation video available at www.youtube.com/petsafebrand

- Easy-to-assemble modular design with closing panel
- Fits left or right sliding glass doors

Product Number	Size	Flap Opening Size	Rise	Outer Frame Size*	Replacement Flap Number
PPA11-14766	Small	5 1/4 x 8 3/16 in.	1 3/4 in.	8 3/8 x 76 13/16 in. - 81 in.	PAC11-11037
PPA11-14767	Medium	8 1/4 x 12 3/16 in.	1 3/4 in.	11 3/8 x 76 13/16 in. - 81 in.	PAC11-11038
PPA11-14768	Large	10 1/4 x 16 3/8 in.	4 1/4 in.	13 3/8 x 76 13/16 in. - 81 in.	PAC11-11039



Pet Screen Door

- Snaps directly onto your existing screen door or window for quick and easy installation
- Slide lock allows control of pet's access

Small – P1-ZB-11

Size	Flap Opening Size	Cut-Out Size	Outer Frame Size
Small	8 x 9 1/4 in.	8 3/8 x 10 3/8 in. – vinyl screen 8 7/8 x 10 7/8 in. – metal screen	9 7/16 x 11 7/16 in.



Panel Pet Door Insert



Installation video available at www.youtube.com/petsafebrand

- Paint-ready and raised mold design to work with paneled doors
- Includes a dual flap system for extra weather protection

RPA00-12116

Flap Opening Size	Cut-Out Size	Outer Frame Size	Replacement Flap Number
10 1/8 x 16 3/4 in.	23 x 26 1/4 in.	24 1/2 x 27 3/4 in.	PAC11-11039

	Size Options						Access Options		
	Cat (1-15 lb.)	Large Cat/ Small Dog (1-15 lb.)	Small Dog (1-15 lb.)	Medium Dog (1-40 lb.)	Large Dog (1-100 lb.)	Extra Large Dog (12-220 lb.)	Closing Panel	2-Way Locking System	RFID Key [†]
Electronic SmartDoor™			✓		✓				✓
Wall Entry Aluminum Pet Door			✓	✓	✓		✓		
Extreme Weather Pet Door™			✓	✓	✓		✓		
Freedom® Aluminum Pet Door			✓	✓	✓	✓	✓		
Plastic Pet Door			✓	✓	✓	✓	✓		
Freedom Patio Panel Pet Door - 81 in			✓	✓	✓		✓		
Freedom Patio Panel Pet Door - 96 in				✓	✓		✓		
Sliding Glass Pet Door			✓	✓	✓		✓		
Pet Screen Door		✓	✓					✓	
Panel Pet Door Insert					✓		✓		
Magnetic Key Cat Door	✓		✓			✓	✓		
4-Way Locking Cat Door	✓		✓			✓			
Big Cat Door		✓		✓		✓			
4-Way Locking Interior Cat Door	✓		✓			✓			
2-Way Locking Interior Cat Door	✓		✓		✓			✓	

*PetSafe® brand pet doors can be installed in most doors and walls. Additional skills, tools and materials required for wall installations.

** Requires wall kit or extension tunnel (each sold separately).

*** Up to 12 in. with extension tunnel (sold separately).

† RFID (Radio Frequency Identification)

Installation Options						
Paneled Doors	Wood, Storm, Pvc & Metal Doors	Sliding Glass & Patio Doors	Screen Doors & Windows	Interior Walls	Exterior Walls	Brick Walls
1 1/2 x 2 in.	1 1/2 x 2 in.			4 3/4 to 7 1/4 in.**	4 3/4 to 7 1/4 in.**	4 3/4 to 7 1/4 in.**
				4 3/4 to 7 1/4 in.**	4 3/4 to 7 1/4 in.**	4 3/4 to 7 1/4 in.**
1 5/8 x 2 1/4 in.	1 5/8 x 2 1/4 in.			✓*	✓*	
3/8 x 2 in.	3/8 x 2 in.			✓*	✓*	
1/16 x 2 in.	1/16 x 2 in.			✓*	✓*	
		76 13/16 x 81 in. tall				
		91 7/16 x 96 in. tall				
		76 13/16 x 81 in. tall				
			✓			
1 3/4 in.	1 3/4 in.					
1/16 x 2 1/8 in.	1/16 x 2 1/8 in.		1/16 to 2 1/8 in.	✓**	✓**	✓**
1/16 x 2 1/8 in.	1/16 x 2 1/8 in.		1/16 to 2 1/8 in.	✓**	✓**	✓**
3/16 x 2 in.	3/16 x 2 in.	3/16 x 2 in.	3/16 to 2 in.			
1 1/8 x 2 in.				✓*		
1/2 x 2 in.				✓*		

Pet Fountains

Your pet needs 1 ounce of water per pound of body weight daily. PetSafe® Drinkwell® pet fountains keep your pet's water filtered and great tasting, encouraging water intake and proper hydration. The free-falling water stream entices thirsty cats and dogs to get the amount of hydration they need to support healthy kidneys and urinary tracts. Pets who are prone to urinary infections, crystals or obstructions need to drink lots of water to prevent health problems.

With modern designs to match any home decor and colors to brighten or blend in, PetSafe® has just the right fountain for any home.



Pet Fountains

Drinkwell Platinum® Fountain

- 1.3 gallon water capacity
- Best for pets of all sizes
- Free-falling stream entices pets to drink more
- Built in reservoir increases capacity and makes refilling easy

PWW00-13703



Compatible Filters Available		
	Premium Carbon Filters PAC00-13070	Carbon Filters PAC00-13067

Drinkwell® 2 Gallon Fountain

- Free-falling stream entices your pet to drink more
- Convenient supply of fresh, filtered water
- Adjustable water flow allows you to customize the stream or turn it off for quieter operation
- BPA free plastic design is easy to clean

PWW00-16468



Compatible Filters Available		
	Carbon Filters PAC00-13906	Drinkwell 2 gallon Foam Filters PAC00-16467

Drinkwell® Original Fountain

- 50 oz. water capacity
- Best for small pets
- Free-falling stream entices pets to drink more
- Made of BPA-free plastic that comes apart for easy cleaning

PWW00-13704



Compatible Filters Available		
	Premium Carbon Filters PAC00-13070	Carbon Filters PAC00-13067

Drinkwell® Mini Fountain

- 40 oz. water capacity
- Best for small pets
- Free-falling stream entices pets to drink more
- Narrow, compact design comes apart for easy cleaning

PWW00-14402



Compatible Filters Available		
	Premium Carbon Filters PAC00-13070	Carbon Filters PAC00-13067



Drinkwell® Multi-Tier Fountain

- 100 oz. water capacity
- Best for small to medium sized pets
- Features a free-falling stream and two places for pets to drink from
- Made of BPA free plastic that comes apart for easy cleaning

PWW00-13708

Compatible Filters Available		
	Premium Carbon Filters PAC00-13070	Carbon Filters PAC00-13067

Drinkwell® Plastic 360 Fountain

- 120 oz. water capacity
- Best for pets of all sizes or multiple pets
- Customizable number of streams and water flow
- 360-degree bowl design allows pets to drink from any angle

D360-RE



Compatible Filters Available		
	360 Carbon Filters PAC00-13712	360 Plastic Foam Filters RF360PRE

Drinkwell® Everflow Fountain

- 192 oz. water capacity
- Automatically refills when connected to a standard garden hose (when used outdoors)
- Free-falling stream entices pets to drink more
- UV resistant plastic design prevents fading outdoors

PWW00-14074



Compatible Filters Available			
	Premium Carbon Filters PAC00-13070	Carbon Filters PAC00-13067	Outdoor Filters PAC00-13192



Drinkwell® Big Dog Fountain

- 2.25 gallon water capacity
- Best for large pets or multi-pet households
- Free-falling stream entices pets to drink more
- Anti-bite cord cover
- 1 gallon reservoir increases capacity and makes refilling easy

PWW00-13713

Compatible Filters Available		
	Premium Carbon Filters PAC00-13070	Carbon Filters PAC00-13067

Drinkwell® Seascape

- 70 oz. water capacity
- Best for small to medium sized pets
- Whisper-quiet operation
- Easy to clean and top-shelf dishwasher safe
- Gray ceramic design looks great in the home

PWW00-16021

*Compatible with Ceramic Carbon Filters (PAC00-13906) and Foam Filters (PAC00-13711). Please see chart below.



Drinkwell® Sedona

- 100 oz. water capacity
- Best for pets of all sizes
- Whisper-quiet operation
- Ceramic tower and BPA free plastic bowl
- Easy to clean and top-shelf dishwasher safe

PWW00-15417

*Compatible with Ceramic Carbon Filters (PAC00-13906) and Foam Filters (PAC00-13711). Please see chart below.



Drinkwell® Avalon Fountain

- 70 oz. water capacity
- Circular ceramic design looks great in the home
- Dual free-falling streams entices pets to drink more
- Upper and lower dishes provide two drinking areas

● Red - PWW00-14376

○ White - PWW00-13905

*Compatible with Ceramic Carbon Filters (PAC00-13906) and Foam Filters (PAC00-13711). Please see chart below.



Drinkwell® Pagoda Fountain

- 70 oz. water capacity
- Stylish ceramic design looks great in the home
- Dual free-falling streams entices pets to drink more
- Upper and lower dishes provide two drinking areas

● Himalayan Blue - PWW00-14898

● Red - PWW00-14289

● Taupe - PWW00-14440

○ White - PWW00-13907

*Compatible with Ceramic Carbon Filters (PAC00-13906) and Foam Filters (PAC00-13711). Please see chart below.



Compatible
Filters
Available



Ceramic
Carbon Filters
PAC00-13906



Foam Filter
PAC00-13711

Drinkwell® Outdoor Dog Fountain

- 3.5 gallon water capacity
- Best for large pets or multi-pet homes
- Indoor or outdoor use
- High-impact, UV resistant plastic prevents fading outdoors
- Free-falling stream entices pets to drink more

DDOG-INOUT



Compatible Filters Available			
	Premium Carbon Filters PAC00-13070	Carbon Filters PAC00-13067	Outdoor Filters PAC00-13192

PetSafe® Current Fountain

- Constant circulation of fresh, filtered water
- BPA free plastic design
- Gentle flow of water is soothing for apprehensive pets
- Easy to clean & dishwasher safe

- Orchid 40 oz. - PWW00-14907
- Orchid 80 oz. - PWW00-14908
- Orchid 120 oz. - PWW00-14909

- Forest 40 oz. - PWW00-15682
- Forest 80 oz. - PWW00-15683
- Forest 120 oz. - PWW00-15684



Compatible Filters Available	
	PetSafe® Carbon Filters PAC00-15271

Drinkwell® Zen Fountain

- 120 oz. water capacity
- Best for pets of all sizes
- Features a wide water stream and a receiving ramp that reduces sound and splash of falling water
- Stainless steel bowl is easy to clean and dishwasher safe

DSTEEL



Compatible Filters Available		
	Premium Carbon Filters PAC00-13070	Carbon Filters PAC00-13067

Drinkwell® Stainless Multi-Pet Fountain

- 120 oz. water capacity
- Best for pets of all sizes or multiple pets
- Multiple free-falling streams entices pets to drink more
- 5 interchangeable spout rings and adjustable flow control cap to customize number of streams and water flow

PWW00-13705



Compatible Filters Available		
	360 Carbon Filters PAC00-13712	360 Plastic Foam Filters RF360PRE



Healthy Pet Water Station™

- Water gravity system that holds .5, 1, or 2.5 gallons of water
- Removable stainless steel bowl for easy cleaning
- Reservoir made of BPA free plastic that locks in place to prevent spills

Small - PFD17-11854

Medium - PFD17-11855

Large - PFD17-11856

Compatible Filters Available	
	Healthy Pet Water Filter™ PFD17-11867

Replacement Activated Carbon Filters

- Removes bad tastes and odors, keeping water fresh
- Activated carbon made from coconut shells
- Replace every 2 to 4 weeks



Drinkwell® Premium Carbon Filters 3-Pack

PAC00-13070
12 Pack - PAC00-16150



Drinkwell® Carbon Filters 3-Pack

PAC00-13067



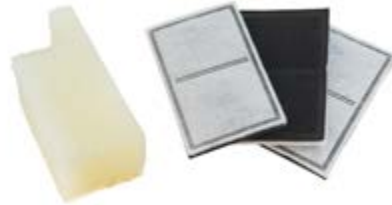
Drinkwell® 360 Carbon Filters 3-Pack

PAC00-13712
12 Pack - PAC00-16152



Drinkwell® Carbon Filters 4-Pack

PAC00-13906
12 Pack - PAC00-16151



Drinkwell® Outdoor Filters (3-Pack) & Foam Filter (1-Pack)

PAC00-13192



PetSafe® Current Carbon Filters 4-Pack

PAC00-15271



Healthy Pet Water Filter™ 2-Pack

PFD17-11867

Replacement Foam Filters

- Catches hair and debris before they reach the pump
- Extends the life of the fountain
- Replace every 1 to 2 months



Drinkwell® 360 Plastic Foam Filters 2-Pack

RF360PRE



Drinkwell® 360 & Ceramic Foam Filters 2-Pack

PAC00-13711



Drinkwell® 2 Gallon Foam Filters 2-Pack

PAC00-16467

Replacement Pumps & Accessories



Drinkwell Platinum® Pump

PAC00-13204



Drinkwell® Avalon, Pagoda, Sedona, Seascapes, Stainless Multi-Pet, Plastic 360, Zen, and Multi Tier Pump

PAC00-13206



Drinkwell® Original Pump

PAC00-14745



PetSafe® Current Pump

PAC00-13201



Drinkwell® Fountain Cleaning Kit

CKPH

Pet Fountains

	Water Capacity	Material	Compatible Filters	Usage
Drinkwell Platinum® Fountain PWW00-13703	1.3 gallons	BPA Free Plastic	PAC00-13067 or PAC00-13070	2-4 weeks
Drinkwell® 2 Gallon Fountain PWW00-16468	2 gallons	BPA Free Plastic	PAC00-13906 & PAC00-16467	2-4 weeks
Drinkwell® Original Fountain PWW00-13704	50 oz.	BPA Free Plastic	PAC00-13067 or PAC00-13070	2-4 weeks
Drinkwell® Mini Fountain PWW00-14402	40 oz.	BPA Free Plastic	PAC00-13067 or PAC00-13070	2-4 weeks
Drinkwell® Multi-Tier Fountain PWW00-13708	100 oz.	BPA Free Plastic	PAC00-13067 or PAC00-13070	2-4 weeks
Drinkwell® Plastic 360 Fountain D360-RE	120 oz.	BPA Free Plastic	PAC00-13712 & RF360PRE	2-4 weeks & 1-2 months
Drinkwell® Everflow Fountain PWW00-14074	192 oz.	UV Resistant Plastic	PAC00-13067, PAC00-13070, PAC00-13192	2-4 weeks & 1-2 months
Drinkwell® Big Dog Fountain PWW00-13713	2.25 gallons	BPA Free Plastic	PAC00-13067 or PAC00-13070	2-4 weeks
Drinkwell® Seascape PWW00-16021	70 oz.	Ceramic	PAC00-13906 & PAC00-13711	2-4 weeks & 1-2 months
Drinkwell® Sedona PWW00-15417	100 oz.	Ceramic, BPA Free Plastic	PAC00-13906 & PAC00-13711	2-4 weeks & 1-2 months
Drinkwell® Avalon Fountain PWW00-14376 & PWW00-13905	70 oz.	Ceramic	PAC00-13906 & PAC00-13711	2-4 weeks & 1-2 months
Drinkwell® Pagoda Fountain PWW00-14898, PWW00-14289, PWW00-14440 & PWW00-13907	70 oz.	Ceramic	PAC00-13906 & PAC00-13711	2-4 weeks & 1-2 months
Drinkwell® Outdoor Dog Fountain DDOG-INOUT	3.5 gallons	UV Resistant Plastic	PAC00-13067, PAC00-13070 & PAC00-13192	2-4 weeks & 1-2 months
PetSafe® Current Fountain PWW00-14907, PWW00-14908, PWW00-14909, PWW00-15682, PWW00-15683, PWW00-15684	40, 80, 120 oz.	BPA Free Plastic	PAC00-15271	2-4 weeks
Drinkwell® Zen Fountain DSTEEL	120 oz.	Stainless Steel	PAC00-13067 or PAC00-13070	2-4 weeks
Drinkwell® Stainless Multi-Pet Fountain PWW00-13705	120 oz.	Stainless Steel	PAC00-13712 & PAC00-13711	2-4 weeks & 1-2 months

Pet Feeders

Choosing the right food for your pet is important for good health, but how you feed your pet is equally important. PetSafe® pet feeders take the stress and guesswork out of mealtime.

Gravity food stations conveniently allow pets who don't overeat to manage their own eating habits. For those pets that need help with portion control or owners with busy schedules, our automatic feeders are a great way to simplify your pet's feeding routine.



Pet Feeders

Smart Feed

- Smartphone programming to control your pet's meals from anywhere
- Dispenses up to 12 meals of dry food a day to feed on your pet's schedule
- Allows for flexible meal portions from $\frac{1}{8}$ cup to 4 cups to fit your pet's diet
- Sends alerts, so you can monitor your pet's meals for peace of mind
- Slow feed option helps slow down fast eaters to prevent bloat and vomiting

PFD00-15788



*Smartphone not included

Six Meal Feeder

- Dispenses up to 6 pre-portioned meals of dry food a day to feed on your pet's schedule
- Quick setup using the built-in digital clock and LCD display
- Pet-proof dispenser helps keep prying paws from stealing food
- Easy to clean with a removable, dishwasher safe tray and bowl

PFD00-15956





Healthy Pet Simply Feed™

- Programmable feeding to schedule up to 12 meals of dry food a day
- Allows for flexible meal portions from $\frac{1}{8}$ cup to 4 cups to fit your pet's diet
- Slow feed option helps slow down fast eaters to prevent bloat and vomiting
- Disassembles for easy cleaning with all food contact parts washable

PFD00-14574



5 Meal Pet Feeder

- Easy-to-use digital display allows you to set specific meal times
- Schedule up to 5 meals or treats each day or 1 meal a day for 5 days
- Removable, dishwasher safe tray with five, 1 cup sections for dry food

PFD11-13707



Digital Two Meal Feeder

- Easy-to-read LCD display with accurate digital timer to feed 2 meals
- Schedule each meal to feed within 1 hour or up to 4 days in advance
- Locking lids help keep food fresh and curious pets from breaking in
- Each removable, dishwasher safe tray holds up to 1.5 cups of dry food

PFD00-15426



Automatic 2 Meal Pet Feeder

- Simple dial timers to set 1 or 2 meals up to 48 hours in advance
- Two removable, dishwasher safe trays hold up to 1.5 cups each of dry food
- Ideal for busy pet parents or a pet needing portion control

PFD11-13706



Healthy Pet Food Station™

- Gravity design automatically refills bowl when food level gets low
- Locking food hopper helps prevent knock over and spills and is easy to refill
- Stainless steel bowl is more hygienic and great for pets with plastic allergies
- Completely dishwasher safe

Small - PFD17-11858 Holds 2 lb.

Medium - PFD17-11859 Holds 4 lb.





PetSafe

Pet Feeders

	Food Capacity	Meals Per Day	Meal Portions	Operation	Power Source	Feed Now Option	Slow Feed Option	Removable Stainless Steel Bowl	BPA Free
Smart Feed PFD00-15788	24 cups	Up to 12	1/8 cup to 4 cups	Smartphone with app	Power Adapter with Battery Backup (4 D Batteries required-not included)	✓	✓	✓	✓
Six Meal Feeder PFD00-15956	6 cups	Up to 6	Up to 1 cup	6 buttons with digital LCD screen	4 D Batteries (not included)	✓			✓
Healthy Pet Simply Feed™ PFD00-14574	24 cups	Up to 12	1/8 cup to 4 cups	5 buttons with digital LCD screen	4 D Batteries or Power Adapter (not included)	✓	✓	✓	✓
5 Meal Pet Feeder PFD11-13707	5 cups	Up to 5	Up to 1 cup	6 buttons with digital LCD screen	4 D Batteries (not included)	✓			✓
Digital Two Meal Feeder PFD00-15426	3 cups	Up to 2	Up to 1.5 cups	5 buttons with digital LCD screen	4 AA Batteries (not included)				✓
Automatic 2 Meal Pet Feeder PFD11-13706	3 cups	Up to 2	Up to 1.5 cups	Turn dial timers	1 AA Battery (not included)				✓
Healthy Pet Food Station™ Small PFD17-11858	2 lb.			Gravity	N/A			✓	✓
Healthy Pet Food Station™ Medium PFD17-11859	4 lb.			Gravity	N/A			✓	✓

Waste Management

Pet waste management doesn't have to be a messy, smelly hassle. With waste management solutions from PetSafe®, cleaning the litter box or potty training your dog becomes easy and mess free.

Our self-cleaning litter box options continuously and automatically remove your cat's waste, keeping your home fresher. Our potty training options let your pet do his business whenever he needs to, so you can continue your puppy's potty training when you're at work, or give your dog a bathroom on your apartment balcony.



Waste Management

ScoopFree® Original Self-Cleaning Litter Box

- Self-cleans for weeks with no scooping, cleaning or refilling for hands-off convenience
- Uses disposable trays pre-filled with crystal litter for a quick, easy cleanup
- Crystal litter controls odor 5x better than clay litter

Purple – PAL00-14242

Taupe – PAL00-16527



ScoopFree® Ultra Self-Cleaning Litter Box

- Privacy hood gives your cat a secluded bathroom and helps reduce litter tracking
- Health counter tracks your cat's usage to quickly alert you to possible health issues
- Automatic rake with adjustable timer cleans 5, 10 or 20 minutes after cat uses the box
- Same great design and features as the ScoopFree® Original

Purple – PAL00-14243

Taupe – PAL00-15342





ScoopFree® Ultra Top-Entry Self-Cleaning Litter Box

- Top-entry hood has a large, grated surface to eliminate most litter tracking
- Health counter tracks your cat's usage to help quickly alert you to possible health issues
- Automatic rake with adjustable timer cleans 5, 10 or 20 minutes after cat uses the box
- Same great design and features as the ScoopFree® Original

PAL00-16540



ScoopFree® Blue Crystal Litter Trays

- Absorbs urine and dries solid waste to lock away odors for 5x better odor control than clay litters
- Disposable, leak-resistant tray with lid for easy cleanup
- Uses 5-10x less litter than clay or clumping litters
- Low-tracking and 99% dust-free

Single – PAC00-14229

3-Pack – PAC00-14231

ScoopFree® Lavender Crystal Litter Trays

- Light lavender scent is soothing for cats
- Absorbs urine and dries solid waste to lock away odors for 5x better odor control than clay litter
- Disposable, leak-resistant tray with lid for easy cleanup
- Uses 5-10x less litter than clay or clumping litter
- Low-tracking and 99% dust free

Single – PAC00-15341



ScoopFree® Sensitive Crystal Litter Trays

- Completely free of perfumes and dyes, perfect for sensitive cats and owners
- Absorbs urine and dries solid waste on contact to lock away odor 5x better than clay litters
- Disposable, leak-resistant tray with lid for easy cleanup
- Uses 5-10x less litter than clay or clumping litter.
- Low-tracking and 99% dust-free

Single – PAC00-14232

3-Pack – PAC00-14234



Disposable Litter Box

- Compact and collapsible design is perfect for travel with your cat
- Includes a full bag of premium PetSafe® crystal litter for 5x better odor control than clay litter
- Special wax coating inside box helps prevent leaking
- Privacy hood reduces litter tracking
- Includes 8 disposable scoops for easy, convenient cleaning

PWM00-16138



ScoopFree® Anti-Tracking Litter Mat

- Helps reduce litter tracking throughout your home
- Spongy material is soft and comfy for your cat's paws
- Perfect for high-traffic areas and multi-cat homes
- Compatible with ScoopFree® Self-Cleaning Litter Boxes and measures 21 L x 19 in. W

Purple – PAC00-14235

Taupe – PAC00-15655



ScoopFree® Privacy Hood

- Adds more privacy for your cat while helping keep smells and litter in the box
- Open front and see-through plastic shows when box is in use
- Compatible with ScoopFree® Original and Ultra Self-Cleaning Litter Boxes

Purple – PAC00-14228

Taupe – PAC00-14806

ScoopFree® Taupe Waste Trap Cover

- Neutral color helps litter box blend with any home décor
- Conceals built-in waste trap on disposable litter tray
- Helps you avoid seeing or touching cat waste
- Compatible with ScoopFree® Original and Ultra Self-Cleaning Litter Boxes

PAC00-14807





Simply Clean® Automatic Litter Box

- Self-cleaning litter box that reduces odor with no scooping and no mess
- Easy to set-up, use and clean
- Uses less clumping litter than traditional litter boxes
- Waste bin can be lined with recycled bags for an easy cleanup
- Needs to be cleaned every 2 weeks in a single-cat household

PAL17-10786

Pet Loo™ Portable Pet Potty

- Portable indoor/outdoor potty that resembles a patch of grass for dogs and other pets
- Innovative drainage system and synthetic grass quickly drains urine away from surface to reduce odors and wet paws
- Wee Sponge™ powder absorbs urine on contact and turns it into gel to instantly trap odors (sample pack included)
- Included biodegradable Pee-Pod tray lines collection bin and holds Wee Sponge™ for easy disposal with no spillage
- Made in the USA

Small – PWM00-14497

Medium – PWM00-14498

Large – PWM00-14499



Pet Loo™ Replacement Grass

- Synthetic grass mat specially designed for the Pet Loo™ system
- Feels like real grass
- Easy to keep clean—use water daily and Wee Care (sold separately) weekly
- Allows urine to quickly drain away from the surface of the Pet Loo™ system into the collection bin

Small – PAC00-14487

Medium – PAC00-14488

Large – PAC00-14489



Pee-Pod with Wee Sponge™ Urine Disposal Kit

- Disposable, biodegradable Pee-Pod lines collection bin for easy cleanup
- Wee Sponge™ powder quickly absorbs urine for mess-free disposal with no spillage
- Fits all sizes of Pet Loo™ systems
- Kit includes 7 Pee-Pod trays, 1 bottle of Wee Sponge™ Urine & Odor Absorber and measuring scoop for a 3-4 week supply

PAC00-14496



Skip To My Loo™ House Training Scent

- Unique attractant formula mimics animal urine to help house train your pet
- Perfect for training your pet to use the Pet Loo™ pee pads or even the yard
- Made in the USA

PAC00-14494



Liquid Ate™ Stain & Odor Enzyme Cleaning Solution

- Chemical-free, enzyme-based cleaner eliminates odors and stains in non-toilet pet areas
- Safe for people and pets
- 16 oz. bottle with sprayer included
- Made in the USA

PAC00-14490



Whiff Off Enzyme Odor Eliminator

- Chemical-free, enzyme-based odor eliminator that deters pets from going on the same spot
- Formula is safe for people and pets
- 16 oz. bottle with sprayer included
- Made in the USA

PAC00-14493

Wee Care Enzyme Cleaner

- Non-toxic, enzyme-based cleaner for the Pet Loo™ Portable Pet Potty or other pet toilet areas
- Removes odors and stains without leaving behind residue, dirt or bacteria
- Made in the USA

PAC00-14492



Pup Care Enzyme Cleaning Solution

- Chemical-free, enzyme-based cleaner safely cleans and sanitizes your dog's living area
- Formula is safe for people and pets
- 16-oz. bottle with sprayer included
- Made in the USA

PAC00-14491



"Freedom" Piddle Place™ Protective Guard

- Protects walls and floors from urine
- Durable plastic is easy to clean
- Made in the USA

PAC00-15901



"Great Job" Piddle Place™ Protective Guard

- Protects walls and floors from urine
- Durable plastic is easy to clean
- Made in the USA

PAC00-15902



Piddle Place™ Indoor/Outdoor Pet Potty

- Portable pet potty that is perfect for potty training, travel and apartments
- Quick-drain spout for a quick and mess-free disposal
- Porous grass mat for immediate drainage, preventing wet paws and bad odors
- Includes Bio+ Enzyme Concentrate for extra odor control

PWM00-15906



Piddle Place™ Replacement Turf

- Porous material prevents wet paws and bad odors
- Soft, spongy mat is comfortable for pets to walk on
- Easy to clean and machine washable

PAC00-15900



Piddle Place™ Bio+ Treatment Concentrate, 3-Pack

- Lab-proven to effectively eliminate pet odors instead of just masking them
- Use in Piddle Place™ reservoir for long-lasting freshness and odor control
- Contains 100% natural enzymes, so it's chemical and alcohol free

PAC00-15904



Piddle Place™ Bio+ Turf Maintenance Spray

- Bio-enzymatic cleaner safely and effectively eliminates pet odors
- Easy to use – just spray directly on the Piddle Place™ grass mat for extra odor control
- Contains 100% natural enzymes, so it's chemical and alcohol free

PAC00-15911



Train 'n Praise™ Potty Training System

- Innovative system uses positive reinforcement to house train your pet to use a pee pad
- Treat dispenser and remote can be used for obedience training after pet is potty trained
- Perfect solution for pet owners in apartments or homes without private yards

PDT00-13649



Train 'n Praise™ Potty Training System Moisture Detection Pads

- Specially designed pads work exclusively with the Train 'n Praise™ Potty Training System
- 6 layers for extra protection with a leak-proof bottom layer to protect your floor
- Each pad measures 23 x 24 in. and holds up to 3 cups of liquid

10-Pack – PAC00-14007

30-Pack – PAC00-14019



Poop Bags

- Lightly-scented, thick plastic prevents splits or tears
- Anti-leak design prevents messy pickups
- 15 bags per roll
- Made in the USA

4-Pack – PWM00-14500

10-Pack – PWM00-14501



Lawn Protector™ 2-Pack

- Eliminates ugly lawn burn patches
- Natural zeolite mineral acts as a filter, removing impurities like heavy metals and ammonia from the water
- Simply add to your pet's water source every 30 days or as needed (60 day supply included)
- Safe for all pets, quick and easy to use
- Made in the USA

PAC00-14495

Waste Management

	Cat Litter Type	Cleaning Method	Cleaning Cycle	Privacy Hood	Health Counter	Dimensions
ScoopFree® Original PAL00-14242 PAL00-16527	Disposable tray with crystal litter	Stainless Steel Rake	20 minutes after use	No, but available as an accessory		27 ³ / ₈ L x 19 W x 7 in. H
ScoopFree® Ultra PAL00-14243 PAL00-15342	Disposable tray with crystal litter	Stainless Steel Rake	Adjustable to 5, 10 or 20 minutes after use	Yes, included	✓	27 ³ / ₈ L x 19 W x 16 in. H
ScoopFree® Ultra Top-Entry Self-Cleaning Litter Box PAL00-16540	Disposable tray with crystal litter	Stainless Steel Rake	Adjustable to 5, 10 or 20 minutes after use	Yes, top-entry version included	✓	27 ³ / ₈ L x 19 W x 16 ¹ / ₂ in. H
Simply Clean® Automatic Litter Box PAL17-10786	Clumping, scoopable clay litter	Conveyor	Continuously cleans with 1 full bowl rotation per hour	Not available		25 ³ / ₄ L x 18 ³ / ₄ W x 10 in H



Collars, Harnesses & Leashes

PetSafe® offers collars and leashes designed with your lifestyle and your pet's comfort in mind. Our hands-free leashes, breakaway collars and various no-pull solutions allow you to take your pet everywhere you go more easily and safely.

With so many solutions and styles available, you can fix common problems like pulling quickly and effectively.

Make walking, running and playing with your pet easier and safer with leashes and collars from PetSafe®.





Collars, Harnesses & Leashes



3 in 1 Harness

- All-in-one, no-pull, walking solution
- Front leash attachment reduces leash pulling, back leash attachment for running, safety restraint for car rides

Extra Small - 3in1-XS

Small - 3in1-S

Medium - 3in1-M

Large - 3in1-L



Black -BLACK



Plum -PLUM



Teal -TEAL

Pet Size	Nylon Width	Neck	Girth	Pet Weight*
Extra Small	½ in.	9-14 in.	13-19 in.	10-20 lb.
Small	¾ in.	14-18 in.	19-24 in.	20-33 lb.
Medium	¾ in.	18-26 in.	24-34 in.	35-60 lb.
Large	1 in.	24-38 in.	29 ½-42 ½ in.	60 lb. +

*Measuring a dog is the most accurate way to determine harness size. Weight ranges are only approximate.

Two Point Control Leash

- Companion leash to the 3 in 1 Harness
- Double ended leash provides more control while walking your dog
- Converts to a 4 ft. leash

¾ in. Nylon Width - TPC-LSH-3/4

5/8 in. Nylon Width - TPC-LSH-5/8



Enjoy walking your dog with our easy to fit and easy to use Easy Walk® Harness.

- Stops leash pulling quickly and comfortably
- Front leash attachment with unique martingale loop redirects dog's forward motion
- Chest strap rests across dog's breastbone, preventing gagging and choking



Easy Walk® Harness

- Petite - EWH-HC-P
- Petite/Small - EWH-HC-P/S
- Small - EWH-HC-S
- Small/Medium - EWH-HC-S/M
- Medium - EWH-HC-M
- Medium/Large - EWH-HC-M/L
- Large - EWH-HC-L
- Extra Large - EWH-HC-X



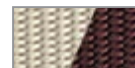
Apple/Gray
-APL



Black/Silver
-BLK



Deep Purple/Black
-DPP



Fawn/Brown
-FWN



Raspberry/ Gray
-RAS



Red/Black
-RED



Royal Blue/Navy
-RYL

Pet Size	Chest Measurement	Girth Measurement	Pet Weight*
Petite	6-7 in.	12-16 in.	< 10 lb.
Petite/Small	8-9 in.	13-18 in.	10-15 lb.
Small	8.5-11 in.	15-21 in.	15-25 lb.
Small/Medium	11-13 in.	19-26 in.	20-30 lb.
Medium	12-15 in.	21-32 in.	25-50 lb.
Medium/Large	14-18 in.	25-34 in.	40-65 lb.
Large	16-21 in.	27-40 in.	65-95 lb.
Extra Large	17.5-23.5 in.	32-50 in.	> 95 lb.

*Measuring a dog is the most accurate way to determine harness size. Weight ranges are only approximate.

Collars, Harnesses & Leashes



Deluxe Easy Walk® Harness

- Padded, neoprene lined straps
- Two reflective strips woven into nylon
- Brushed nickel hardware

Small - EWH-D-HC-S

Medium - EWH-D-HC-M

Medium/Large - EWH-D-HC-M/L

Large - EWH-D-HC-L



Apple - APL



Ocean - OCN



Rose -RSE



Steel -STL

Pet Size	Chest Measurement	Girth Measurement	Pet Weight*
Small	8.5-11 in.	15-21 in.	15-25 lb.
Medium	12-15 in.	21-32 in.	25-50 lb.
Medium/Large	14-18 in.	25-34 in.	40-65 lb.
Large	16-21 in.	27-40 in.	65-95 lb.

*Measuring a dog is the most accurate way to determine harness size. Weight ranges are only approximate.



Easy Walk® Chic Harness

- Fun patterns with coordinating hardware
- Comes with matching 4 ft. leash

Small - EWH-C-HC-S

Medium - EWH-C-HC-M

Medium/Large - EWH-C-HC-M/L

Large - EWH-C-HC-L



Bonez -BON



Donuts -DON



Poppies -POP

Pet Size	Chest Measurement	Girth Measurement	Pet Weight*
Small	8.5-11 in.	15-21 in.	15-25 lb.
Medium	12-15 in.	21-32 in.	25-50 lb.
Medium/Large	14-18 in.	25-34 in.	40-65 lb.
Large	16-21 in.	27-40 in.	65-95 lb.

*Measuring a dog is the most accurate way to determine harness size. Weight ranges are only approximate.



Bling Easy Walk® Harness

- Fun, eye-catching, sparkly material

Small - EWH-B-HC-S

Medium - EWH-B-HC-M

Medium/Large - EWH-B-HC-M/L

Large - EWH-B-HC-L



Blue -BLU



Purple -PPL



Silver -SLV

Pet Size	Chest Measurement	Girth Measurement	Pet Weight*
Small	8.5-11 in.	15-21 in.	15-25 lb.
Medium	12-15 in.	21-32 in.	25-50 lb.
Medium/Large	14-18 in.	25-34 in.	40-65 lb.
Large	16-21 in.	27-40 in.	65-95 lb.

*Measuring a dog is the most accurate way to determine harness size. Weight ranges are only approximate.



Sure-Fit Harness®

- Perfect for everyday wear
- Five adjustment points provide optimal fit and maximum comfort
- Two quick-snap buckles for quick on/off

Extra Small - SFH-XS-1/2

Small - SFH-S-3/4

Medium - SFH-M-3/4

Large - SFH-L-1



Apple -APL



Black -BLK



Deep Purple
-DPP



Red -RED



Royal Blue
-RYL

Pet Size	Girth	Pet Weight*
Extra Small	15-21 in.	15-25 lb.
Small	18-22 in.	20-30 lb.
Medium	22-30 in.	25-50 lb.
Large	28-42 in.	65-80 lb.

*Measuring a dog is the most accurate way to determine harness size. Weight ranges are only approximate.

Collars, Harnesses & Leashes



Easy Sport Harness

- Provides maximum comfort with elasticized neck straps and a padded handle for extra control
- Reflective detailing for increased safety and visibility
- Two adjustable quick-snap buckles for ease of use and optimal fit

Extra Small - ESPH-XS

Small - ESPH-S

Medium - ESPH-M

Large - ESPH-L



Apple -APL



Black -BLK



Blue -BLUE



Red -RED



Pink -PINK

Pet Size	Girth	Pet Weight*
Extra Small	16-22 in.	15-25 lb.
Small	21-27 in.	20-30 lb.
Medium	26-32 in.	25-50 lb.
Large	29-43 in.	65-80 lb.

*Measuring a dog is the most accurate way to determine harness size. Weight ranges are only approximate.



KeepSafe® Break-Away Collar

- Designed to prevent dogs from strangulation if they become entangled by their collars in fences, decks, crates, kennels, heating and cooling vents, shrubs/branches
- Patented break-away safety buckle releases when pressure is applied
- Can be used for walking by attaching leash to D rings located on either side of buckle

Petite - KSC-P-3/8

Small - KSC-S-3/4

Medium - KSC-M-3/4

Medium - KSC-M-1

Large - KSC-L-1

Extra Large - KSC-X-1



Black -BLK



Deep Purple -DPP



Red -RED



Royal Blue -RYL



Orange



BoPaw

Pet Size	Nylon Width	Neck
Petite	3/8 in.	7-10 in.
Small	3/4 in.	10-14 in.
Medium	3/4 in.	14-20 in.
Medium	1 in.	14-20 in.
Large	1 in.	18-28 in.
Extra Large	1 in.	22-34 in.



Martingale Collar with Quick Snap Buckle

- Features a quick-release snap buckle for easy on/off
- Prevents dog from slipping out of the collar
- Tightens when dog pulls and loosens when dog stops

Petite - PQC-P-3/8
 Small - PQC-S-3/4
 Medium - PQC-M-3/4
 Medium - PQC-M-1
 Large - PQC-L-1

Pet Size	Nylon Width	Neck
Petite	3/8 in.	5-8 in.
Small	3/4 in.	8-12 in.
Medium	3/4 in.	10-16 in.
Medium	1 in.	10-16 in.
Large	1 in.	14-20 in.

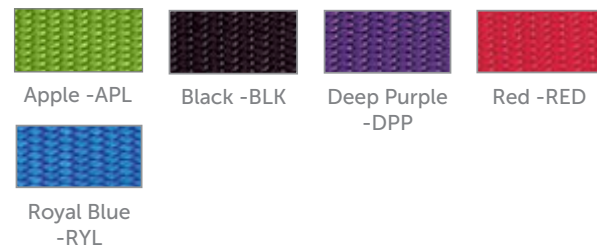


The Martingale Collar

- Prevents dog from slipping out of the collar
- Tightens when dog pulls and loosens when dog stops
- Perfect for escape artists and breeds with necks larger than their heads

Petite - PRC-P-3/8
 Small - PRC-S-3/4
 Medium - PRC-M-3/4
 Medium - PRC-M-1
 Large - PRC-L-1

Pet Size	Nylon Width	Neck
Petite	3/8 in.	5-8 in.
Small	3/4 in.	8-12 in.
Medium	3/4 in.	10-16 in.
Medium	1 in.	10-16 in.
Large	1 in.	14-20 in.



Collars, Harnesses & Leashes



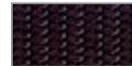
Gentle Leader® Headcollar

- Gently stops excessive pulling and provides immediate control
- Maximum comfort with neoprene padded nose loop
- Optimal fit with fully adjustable neck strap

Petite - GL-Q-HC-P
 Small - GL-Q-HC-S
 Medium - GL-Q-HC-M
 Large - GL-Q-HC-L
 Extra Large - GL-Q-HC-X



Apple Green
-APL



Black -BLK



Deep Purple
-DPP



Fawn -FWN



Red -RED



Raspberry
-RSP



Royal Blue
-RYL

Pet Size	Pet Weight
Petite	< 5 lb.
Small	5-25 lb.
Medium	25-60 lb.
Large	60-130 lb.
Extra Large	> 130 lb.



Gentle Leader® Chic Headcollar and Leash

- Gently stops excessive pulling and provides immediate control
- Maximum comfort with neoprene padded nose loop
- Fun patterns with coordinating hardware
- Comes with matching 4 ft. leash

Small - GL-HC-S
 Medium - GL-HC-M
 Large - GL-HC-L



Bonez -BON



Donuts -DON



Poppies -POP

Pet Size	Pet Weight
Small	5-25 lb.
Medium	25-60 lb.
Large	60-130 lb.

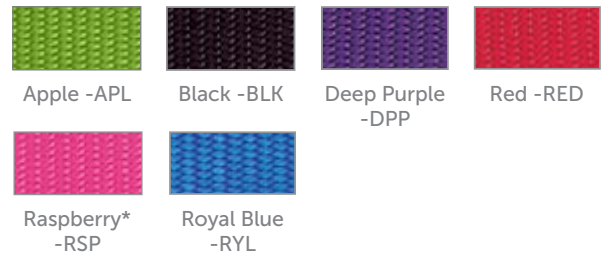


Nylon Leash

- Soft, durable nylon
- Available in 3 widths ($\frac{3}{8}$ in., $\frac{3}{4}$ in. and 1 in.) and 2 lengths (4 ft. and 6 ft.)
- Available in 6 colors

Small - LSH-3/8-X-6
 Medium - LSH-3/4-X-4
 Medium - LSH-3/4-X-6
 Large - LSH-1-X-4
 Large - LSH-1-X-6

Pet Size	Nylon Width	Nylon Length
Small	$\frac{3}{8}$ in.	6 ft.
Medium	$\frac{3}{4}$ in.	4 ft.
Medium	$\frac{3}{4}$ in.	6 ft.
Large	1 in.	4 ft.
Large	1 in.	6 ft.



*Available in Medium only



Hands Free Leash

- Great for on-leash training, walking or running, trail walking or hiking
- Belt features a hook and loop fastener closure for quick and safe release when needed
- Belt adjusts from 31 to 53 in.; leash adjusts from 31 to 54 in.

LSH-HF-BLK



Sport Leash

- Hand wrap frees up your grip for other activities
- Adjusts to any size hand
- Built-in bungee reduces leash tension

Red - SP-LSH-3/4-RED
 Black - SP-LSH-3/4-BLK
 Royal Blue - SP-LSH-3/4-RYL

Collars, Harnesses & Leashes



Come With Me Kitty™ Harness and Bungee Leash

- Dual adjustment points give a snug, safe fit
- Harness design applies gentle pressure to shoulders, not throat, to safely restrain your cat
- Unique bungee leash design gives in when your cat approaches the end of the leash

Small - CWMK-S

Medium - CWMK-M

Large - CWMK-L



Black/Silver
-BLK



Dusty Rose/
Burgundy -DST



Electric Lime/
Green -ELM



Lilac/Deep
Purple -LLC



Red/Black
-RED



Royal Blue/Navy
-RYL



Sparkle Blue*
PTA00-15560
PTA00-15561

*Available in Medium & Large only

Pet Size	Nylon Width	Neck
Small	3/8 in.	9-11 in.
Medium	3/8 in.	10 1/2-16 in.
Large	3/8 in.	13-18 in.



Kitty Collars

- Snag-proof nylon
- Break-away safety buckles
- Bell attached to warn unsuspecting birds and wildlife of outdoor kitties

Red - PTA00-15361

Black - PTA00-15362

Royal Blue - PTA00-15363

Electric Lime - PTA00-15364

Lilac - PTA00-15376

Dusty Rose - PTA00-15377

Toys

PetSafe® dog toys and interactive cat toys make playtime last longer and give your pets the activity they need to remain happy and healthy. Our toys are designed to let your pet live out their natural instincts, like pulling or chewing, or to just let them tug, pull, pounce or fetch.

Our meal-dispensing toys help control your dog's portions while they play.



Ring Holding Toys



Bristle Bone®

- Nylon bristles and rubber nubs offer dogs a stimulating chewing surface
- Designed to hold rawhide treat rings
- The rings keep them playing longer

Extra Small – BB-BRI-BN-XS

Small – BB-BRI-BN-S

Medium – BB-BRI-BN-M

Large – BB-BRI-BN-L



Bouncy Bone™

- Three toys in one: nylon bone, rubber ball and treat ring holding chew toy
- Designed to hold rawhide treat rings
- The rings keep dogs playing longer

Extra Small – _BB-BCY-BN-XS

Small – BB-BCY-BN-S

Medium – BB-BCY-BN-M

Medium/Large – BB-BCY-BN-M/L

Large – BB-BCY-BN-L

Ring Holding Toys



Jack

- A new twist on a classic toy, the Jack features durable nylon and rubber construction
- Durable rubber nubs help to clean teeth and gums
- The rings keep them playing longer

Small – BB-JACK-S

Medium – BB-JACK-M

Large – BB-JACK-L



Nobbly Nubbly™

- Features robust knobs, a grooved, rubber center, and treat ring holding design
- Grooved rubber center can be smeared with treats like peanut butter or spray cheese
- Nubs and grooves help to clean teeth and gums

Extra Small – BB-NOB-XS BB

Small – BB-NOB-S BB

Medium – BB-NOB-M BB

Large – BBB-NOB-L BB

Treat Holding Animals

- Treat ring holding, durable nylon and natural vanilla scented rubber toys
- New locking mechanism to ensure safety for dogs

Dinosaur

Small – PTY00-15671 Medium – PTY00-15670



Turtle

Small – PTY00-15675 Medium – PTY00-15674



Hedgehog

Small – PTY00-15673 Medium – PTY00-15987



Unicorn

Small – PTY00-15669 Medium – PTY00-15668



Rawhide Treat Rings

- Made from natural rawhide
- Designed for use with treat ring holding toys: Bouncy Bone™, Bristle Bone®, Jack and Nobby Nubbly™

Original Rawhide

Size A – BB-GN-RING-RH-S
 Size B – BB-GN-RING-RH-M
 Size C – BB-GN-RING-RH-L

Peanut Butter Flavored

Size A – BB-RING-PB-A
 Size B – BB-RING-PB-B
 Size C – BB-RING-PB-C

*NOT for use with Ultra toys.



Value Pack Treat Rings

- Irresistible treat refills for ring holding toys
- Variety pack includes 12 natural rawhide rings and 12 peanut butter flavored rings
- Packaged in resealable bags

Size A – PPT00-15960

Size B – PPT00-15959

Size C – PPT00-15961



Treat Ring Variety Pack, Breakfast, Lunch & Dinner

- Irresistible treat refills for ring holding toys
- Variety pack includes 5 natural rawhide rings, 5 peanut butter & jelly flavored rings and 5 turkey, cranberry & pumpkin flavor rings
- Toys and treats together make for a longer lasting, more engaging playtime

Small – BB-BLD-RING-RH-S

Medium – BB-BLD-RING-RH-M

Large – BB-BLD-RING-RH-L

Ultra Toys

- Designed to be more durable and challenging than standard ring holding toys
- Rawhide treat rings are 4 times thicker than original treat rings
- Perfect for bigger dogs and more aggressive chewers



Woofer

Small – BB-ULT-WOOF-S
Medium – BB-ULT-WOOF-M
Large – BB-ULT-WOOF-L



Sub

Small – BB-ULT-SUB-S
Medium – BB-ULT-SUB-M
Large – BB-ULT-SUB-L



Stratos

Small – BB-ULT-STRAT-S
Medium – BB-ULT-STRAT-M
Large – BB-ULT-STRAT-L



Ultra Rawhide Rings

- Designed for use with Ultra toys: Stratos, Sub and Woofer
- Made from ultra-thick natural rawhide

Size D – BB-ULT-RING-RH-D
Size E – BB-ULT-RING-RH-E
Size F – BB-ULT-RING-RH-F

*To be used ONLY with Ultra toys.

Treat Dispensing Toys



Waggle™

- Super flexible middle makes it easy for dogs to playfully shake this toy back and forth
- Can be filled with kibble or treats
- Adjustable Treat Meter® prongs control the difficulty level of getting treats

Extra Small – BB-WAG-XS

Small – BB-WAG-S

Medium/Large – BB-WAG-ML



Chuckle™

- Makes an engaging chuckle sound when shaken
- Randomly dispenses kibble or treats
- Adjustable Treat Meter® prongs control the difficulty level of getting treats

Small – BB-CHK-S

Medium/Large – BB-CHK



Barnacle

- Durable rubber toy made from 3 different sized spheres
- Each sphere has Treat Meter® prongs which can randomly dispense treats
- The bone-shaped grooves on the spheres can be filled with smearable treats, like peanut butter

Extra Small – BB-BRCL-XS

Small – BB-BRCL-S

Medium – BB-BRCL-M

Large – BB-BRCL-L

Squirrel Dude™

- Durability and a funky bounce will make the Squirrel Dude™ toy one of your dog's favorites
- Can be filled with kibble or treats
- Adjustable Treat Meter® prongs control the difficulty level of getting treats



Extra Small – PTY00-13746
Medium – PTY00-13744

Small – PTY00-13745
Large – PTY00-13743



Twist 'n Treat™

- Dispenses kibble or treats through an adjustable opening
- Treats of virtually any shape and size can be used
- Perfect for less aggressive chewers

Extra Small – BB-TNT-XS

Small – BB-TNT-S

Medium – BB-TNT-M

Large – BB-TNT-L

Puppy Toys

Puppy toys are designed exclusively for puppies up to six months old. They are gentle on young teeth, yet durable enough for extended playtime. Not recommended for dogs over six months of age.



Twist 'n Treat™

- Dispenses kibble or treats through an adjustable opening
- Works with treats of virtually any shape and size to be used with this toy
- Perfect for less aggressive chewers

Extra Small – BB-P-TNT-XS

Small – BB-P-TNT-S

Medium – BB-P-TNT-M



Squirrel Dude™

- Durability and a funky bounce will make the Squirrel Dude™ toy one of your dog's favorites
- Can be filled with kibble or treats to keep your dog playing longer
- Adjustable Treat Meter® prongs control the difficulty level of getting treats

Extra Small – BB-P-SQRL-XS

Small – BB-P-SQRL-S

Medium – BB-P-SQRL-M



Waggle™

- Super flexible middle makes it easy for dogs to playfully shake this toy back and forth
- Can be filled with kibble or treats to keep your dog playing longer
- Adjustable Treat Meter® prongs control the difficulty level of getting treats

Extra Small – BB-P-WAG-XS

Small – BB-P-WAG-S

Medium/Large – BB-P-WAG-M

Squeak 'n Treat Toys

- Combines the stimulation of treat dispensing and squeaking for a unique play experience
- Features adjustable Treat Meter® prongs and a durable rubberized squeaker
- Made from vanilla-scented rubber



Booya

Small – BB-SNT-BOO-S
 Medium – BB-SNT-BOO-M
 Large – BB-SNT-BOO-L



Troog

Small – BB-SNT-TROO-S
 Medium – BB-SNT-TROO-M
 Large – BB-SNT-TROO-L



Ooga

Small – BB-SNT-OOG-S
 Medium – BB-SNT-OOG-M
 Large – BB-SNT-OOG-L

Fun Durable Toys

- Perfect for toss and fetch. They also feature our adjustable Treat Meter® prongs
- Made from natural vanilla scented rubber
- Fun Durable toys come in three shapes and two sizes: Small, for dogs under 20 lb. and Medium/Large, for dogs 20-70 lb.



Cow-Wow

Small – BB-FUN-COW-S
 Medium/Large – BB-FUN-COW-M/L



Elephunk

Small – BB-FUN-ELE-S
 Medium/Large – BB-FUN-ELE-M/L



Hippster

Small – BB-FUN-HIP-S
 Medium/Large – BB-FUN-HIP-M/L

Meal Dispensing Toys



Magic Mushroom™

- Keeps dogs engaged as they work to get treats or kibble out of toy
- Sliding treat windows can be adjusted to allow treats to dispense slower or faster
- Can also be used as a meal dispenser to slow gulping eaters

Small – BB-MSH-S
Medium/Large – BB-MSH-ML



Kibble Nibble™

- Appeals to your dog's natural instincts, making him more engaged in mealtime
- Treat Meter® prongs at each end of the toy randomly dispense kibble, making dogs work for their meal
- Can be used as a weight management tool, and also to slow gulping eaters

Small – PTY00-13739
Medium/Large – PTY00-13738



Tug-A-Jug™

- Provides a multi-sensory appeal to keep dogs excited and motivated
- Can be used to play games and as an aid to teach training commands
- Can be used to feed entire meals, slowing down gulping eaters

Extra Small – PTY00-13742
Small – PTY00-13741
Medium/Large – PTY00-13740

Toys for Playtime



Automatic Ball Launcher

- Launches standard tennis balls 8-30 ft. with 9 distance settings and 6 angle settings
- Multiple safety features, including motion sensors and a rest feature for overactive dogs
- Interactive tones and features encourage play and help with training

PTY00-14665



Grip 'n' Tug

- Protective handle reduces hand fatigue
- Special fleece-braided design is durable and safe

PTY00-16035



Squeak Replacement Tug

GNT-REP-SQUEAK



Replacement Tug

GNT-REP-FLC

Sportsmen Ring Holding Toys

- Classic toys in blaze orange for hunting and agricultural markets
- Durable toys designed to hold refillable treat rings, four treat rings included
- Four different designs of toys are available using the traditional size rings
- Ultra Stratos toy uses the ultra-thick rawhide rings for aggressive chewers



Bouncy Bone™

Medium – PTY00-15817
Large – PTY00-15819



Bristle Bone®

Medium – PTY00-15815
Large – PTY00-15816



Nobbly Nubbly™

Medium – PTY00-15821
Large – PTY00-15822



Jack

Medium – PTY00-15819
Large – PTY00-15820



Rawhide Treat Rings

- Made from natural rawhide
- Designed for use with Busy Buddy treat ring holding toys: Bouncy Bone™, Bristle Bone®, Jack and Nobby Nubbly™

Size B – PTT00-15835

Size C – PTT00-15836

*NOT for use with Ultra toys.



Ultra Stratos

Medium –PTY00-15823

Large –PTY00-15824



Sportsman Ultra Rawhide Rings

- Designed for use with Sportsmen Ultra Stratos
- Made from ultra-thick natural rawhide

Size E – PTT00-15837

Size F – PTT00-15838

*To be used ONLY with Ultra Stratos.

Sportsmen Treat Dispensing Toys

- Classic toys in blaze orange for hunting and agricultural markets
- Toys can hold a wide variety of treats, like dry and semi-moist treats, kibble and peanut butter
- Multiple shapes and functions available



Barnacle

Small – PTY00-15825
Medium – PTY00-15826
Large – PTY00-15827



Football

Medium – PTY00-15951
Large – PTY00-15952



Chuckle™

PTY00-15953

Sportsmen Latex Toys

- Realistic colors/features and irresistible squeaking latex toys are sure to keep dogs occupied for hours on end. Besides squeaking, each toy has a unique feature that extends when squeezed — the tail or wattle!
- Product is swift tacked with a hanger for pegging



Duck

PTY00-15863



Turkey

PTY00-15864



Raccoon

PTY00-15865

Sportsmen Meal Dispensing Toys

- Classic toys in blaze orange for hunting and agricultural markets
- Meal dispensing toys are designed to hold enough kibble to feed a dog an entire meal
- Eating too quickly can be dangerous; meal dispensing toys slow meals down and make dogs work
- Toys can also hold hard treats to provide dogs with a challenging and rewarding puzzle toy



Tug-A-Jug™

Small – PTY00-15833

Medium/Large – PTY00-15834



Kibble Nibble™

PTY00-15832

Sportsmen Squeak 'n Treat Toys



Troog

Medium – PTY00-15830

Large – PTY00-15831



Booya

Medium – PTY00-15828

Large – PTY00-15829

Calming Toys

- Soothing, chamomile scent to help reduce anxiety
- Two durable food/treat dispensing chew toys
- Training and behavior advice from professional dog trainers included



Barnacle and Squirrel Dude™

Small – PTY00-1576
Medium – PTY00-15762

Refillable Toys

Chilly Penguin

- The large cavity acts as an ice cube tray
- Holds a wide variety of treat options
- Stackable in the freezer

Small – BB-PENGUIN-S
Medium/Large – BB-PENGUIN-ML



Forever Bone

- Made from nylon and durable vanilla-scented rubber
- Holds 2 rawhide treat rings (4 included)
- Add treat rings to SnapFit™ cups for engaging play

Small – BB-4EVER-BN-S
Medium – BB-4EVER-BN-M
Large – BB-4EVER-BN-L



Ninja Star

- Dogs get the fun of the squeak, without the mess of plush toy destruction
- Durable rubber scented with natural vanilla
- Holds a wide variety of treat options

Small – BB-SNT-NINJA-S
Medium – BB-SNT-NINJA-M
Large – BBB-SNT-NINJA-L

Pogo Plush®

- Plush animal toy with squeaker
- No stuffing, no mess!
- Inner bouncy frame has satisfying give
- Free-floating squeaker



Slap Happy®

- The Slap Happy toy is sure to appeal to your dog's instinct to shake, and it's covered in faux sheepskin fabric

Small – PP-SLAP-SHP-S
Large – PP-SLAP-SHP-L

Beaver

- The Beaver has a big grin and a long flat tail covered in faux fur fabric

Small – PP-BVR-S
Large – PP-BVR-L



Panda

- This adorable black and white faux fur critter is everyone's favorite

Small – PTY00-14901
Large – PTY00-14902



Bunny

- The Bunny sports floppy ears and a fluffy tail covered in faux fur fabric

Small – PP-BUN-S
Large – PP-BUN-L

Faux Sheepskin

- Made from stuffed faux sheepskin
- Classic, durable plush toys
- Each toy features a squeaker

Ball

Small – SHP-BALL-S
Medium – SHP-BALL-M



Bone

Small – SHP-BONE-S
Medium – SHP-BONE-M
Large – SHP-BONE-L



Monster Bone

SHP-BONE-MNSTR



Ted

Small – SHP-TED-S
Medium – SHP-TED-M
Large – SHP-TED-L



Tug

Small – SHP-TUG-S Medium – SHP-TUG-M



Cat Toys



Bolt

- Random laser patterns engage your cat in fun, interactive play
- Adjustable mirror to aim laser across different surfaces
- Automatically turns off after 15 minutes

PTY00-14244



ZOOM

- Two lasers for double the fun
- 360 degree rotation creates random patterns
- Automatic shut-off after 15 minutes of playtime

PTY00-16494



Cheese

- Two mice play peek-a-boo to keep cats moving and engaged in play
- Play While You Are Away mode allows cats to play even when you're not there
- Automatically turns off after 10-15 minutes

PTY00-14669



Laser Chase

- Automated laser toy moves around randomly
- Navigates out of corners and from underneath furniture
- Automatic Shut-off after 10 minutes of playtime

PTY00-16453



Egg-Cersizer™

- Turns mealtime into playtime and speeds up weight loss
- Fun wobbly movement as cat plays with toy
- Adjustable openings to increase or decrease the challenge for your cat

PTY00-13747



Fishbowl

- Holds enough kibble to feed an entire meal
- Weighted base helps prevent overturning
- Made from durable high-impact plastic

FUN-FB



SlimCat™ Interactive Feeder

- Distributes an adjustable amount of food as your cat plays
- Fun source of play and exercise
- BPA-free plastic
- Available Color Options:

Blue – TOY00001

Green – TOY00002

Orange – TOY00003

Pink – TOY00004



Twist 'n Treat™ Teaser

- Helps with your cat's weight loss
- Adjustable openings to increase or decrease the challenge for your cat
- Attached feather teaser

FUN-TEAS

Large – SHP-TED-L



Doorway Dangli™

- Fuzzy, feathery tail mimics natural prey
- Includes a flexible hanger for easily slipping on a door frame
- Safety buckle on the bungee cord breaks away if too much pressure is applied

FUN-DD

Access & Mobility

Whether you're embarking on a road trip or just have an elderly dog or cat, many pets need help getting places. Our ramps and steps are great for reaching medium to high elevations like beds or for vehicle use. Regular use of ramps or stairs can reduce stress on pets' joints. Our stairs are perfect for in-home use, helping pets reach the couch or bed.



Access & Mobility

Deluxe Wood Pet Stairs

- Beautiful wood construction
- Tested to 200 lb.
- Folds for storage or transport
- Medium size is perfect for sofas and chairs
- Large for small-medium size pets
- Extra Large for large pets or taller bed

Medium - 62458 – Brown Box

Large - 62351 – Brown Box

Extra Large - 62352 – Brown Box



Size	Steps	Dimensions	Tread Dimensions
Medium	3	19 D x 14 W x 14.5 in. H	6 D x 13 W x 4.75 in. H
Large	4	24 D x 16 W x 20 in. H	6 D x 14.5 W x 4.75 in. H
Extra Large	4	30 D x 19 W x 25 in. H	7.5 D x 18 W x 6.25 in. H

Wood Bedside Ramp

- Provides gentle climb to access even the tallest beds
- Large top landing (16 x 12 in) and plush carpet make climbing easy
- Real wood trim with Cherry finish
- Dimensions: 70 x 16 x 25 in
- Holds up to 120 lb.

62399 – Brown Box



Ramps

Wood Sofa Ramp

- Perfect to access sofas or chairs
- Real wood trim with Cherry finish
- Carpeted floor for comfort
- Dimensions: 45 D x 14 W x 14 in. H
- Holds up to 120 lb.

62459 – Brown Box



Deluxe Tri-Scope Ramp

- Full-size, full-strength ramp that stores compact
- Closed length is 30% shorter than regular model
- Weighs 14 lb. and supports 300 lb.
- Dimensions: 28-70 D x 16 W x 5 in. H

62420 – Brown Box



Deluxe Telescoping Ramp

- Versatile, telescoping design
- Weighs 13 lb. and holds over 400 lb.
- High-traction walking surface
- Dimensions: 39-72 D x 17 W x 4 in. H

62305 – Retail Box

62461 – Brown Box

Deluxe XL Telescoping Ramp

- Same as Deluxe ramp, but 15 in longer and 3 in wider
- Weighs 18 lb. and holds 300 lb.
- Ramp for steep inclines
- Dimensions: 47-87 D x 20 W x 4 in. H

62320 – Brown Box



Smart Ramp

- Easy to extend and collapse
- Weighs only 16 lb.
- Easy to use, store and transport
- Shur-Foot tread for confident footing
- Supports 300 lb.
- Dimensions: 42-70 D x 17 W x 5 in. H

#16220 – Brown Box



Smart Ramp Jr.

- Convenient for indoor or outdoor use
- Weighs only 8 lb. – easy to use and store
- Shur-Foot tread for confident footing
- Holds 150 lb.
- Dimensions: 40 D x 20 W x 5 in. H

#16020 – Brown Box



UltraLite Bi-fold Ramp

- Our most economical full-size ramp
- Simple folding design is easy to use
- Weighs only 10 lb. and holds 150 lb.
- Dimensions: 62 D x 16 W x 4 in. H

62321 – Retail Box

62462 – Brown Box



Half Ramp II

- Weighs 7 lb. – holds 200 lb.
- Great for minivans, couches – up to 20 in. high
- High-traction surface
- Dimensions: 40 D x 18 W x 5 in. H

62306 – Brown Box

Stairs

PupSTEP® Lite

- Holds pets to 70 lb.
- Lightweight, strong, and economical
- Overall Dimensions: 24 D x 16 W x 19.5 in. H
- Tread Dimensions: approx 4.5 D x 12 W x 4.75 in. H

62362 – Label only



PupSTEP® HitchSTEP

- Two-step design makes it easy for pets to climb
- Steps swivel out of the way or remove to stow
- Steel construction holds up to 200 lb.
- Adjustable design fits all vehicles
- Step Dimensions: 10 D x 18 W x 8.5 in. H

62430 – Brown Box



PupSTEP®+Plus

- Lightweight and sturdy
- Folds down for storage or transport
- Modern styling blends with any decor

PupSTEP®+Plus - 62278 – Retail Box
 PupSTEP®+Plus XL - 62398 – Brown Box
 PupSTEP®+Plus - 62460 – Brown Box



Decorative Pet Stairs

- Solid wood with Cherry finish
- 2- or 3-step designs

2-step #15201 – Brown Box

3-step #15301 – Brown Box



Size	Pet Weight	Dimensions (D x W x H)	Tread Dimensions (D x W x H)
Large	150 lb.	24 x 16 x 20 in.	5 x 12 x 4.75 in.
Extra Large	200 lb.	28 x 18 x 25 in.	7 x 16 x 6.25 in.

Size	Pet Weight	Dimensions (D x W x H)	Tread Dimensions (D x W x H)
2 Step	120 lb.	16 x 18 x 14 in.	8 x 18 x 7 in.
3 Step	200 lb.	24 x 18 x 21 in.	8 x 18 x 7 in.

CareLift Lifting Harnesses

- For older, injured, or invalid dogs, the CareLift lifting harness provides a convenient and safe way to improve pet's mobility
- Dogs can comfortably wear the front and rear sections for long periods of time
- The unique design of the CareLift lifting harness allows dogs to be lifted from both the hips and waist, and includes a specially-shaped protector panel for male dogs (removes for females)

Rear-Only Lifting Harness

- Lifts from leash or handle
- Adjusts at waist and hips for custom fit

Small - 62427 – Retail Box

Medium - 62364 – Retail Box

Large - 62365 – Retail Box



Pet Size	Pet Weight
Small	7-35 lb.
Medium	35-70 lb.
Large	70-130 lb.

Full-Body Lifting Harness

- Lifts from leash, handles, or shoulder strap
- Fully adjustable for custom fit
- Can be comfortably worn full-time

Small - 62428 – Retail Box

Medium - 62366 – Retail Box

Large - 62367 – Retail Box



Pet Size	Pet Weight
Small	7-35 lb.
Medium	35-70 lb.
Large	70-130 lb.

Car Safety Harnesses

- Designed for safety and comfort. The safety tether attaches to the vehicle seat belt to allow some range of motion while traveling, but locks in case of sudden stop
- A handy walking leash attachment point makes it a breeze to transition to and from the car.
- Installs in seconds and works with any vehicle. Available in four sizes, and adjustable to fit all dogs within the size range
- The Deluxe series features a fully padded vest with breathable liner for maximum comfort and safety. This harness has been crash-tested in a DOT-approved facility to leading standards for safety, and has been statically tested to withstand over 3,000 lb. of force



Deluxe Harness

- Available in small, medium, large and extra large

Small - 62404 – Retail Box

Medium - 62405 – Retail Box

Large - 62406 – Retail Box

Extra Large - 62407 – Retail Box

Pet Size	Pet Weight
Small	6-20 lb.
Medium	20-55 lb.
Large	45-85 lb.
Extra Large	60-120 lb.



Car Safety Tether

- Makes any car "harness ready"
- Tested to 2,000 lb.

62408 – Retail Box

Deluxe Seat Covers & Liners

- Engineered to fit all vehicles with headrests
- Our SmartFit feature set provides a significantly improved fit on all vehicles and is available on all bench seat models; includes elasticized panels on sides and front, seat anchors, seat belt "keepers", and cinch straps on corners
- Machine washable, quilted micro-suede

Deluxe Hammock Seat Cover

- Dimensions: 56 x 57 in.

62339 – Retail Box

- Extra Wide Dimensions: 60 x 57 in.

Ex Wide 62451 – Brown Box



Deluxe Bench Seat Cover

- Dimensions: 56 x 47 in.

62283 – Retail Box



Deluxe SUV Cargo Liner

- Dimensions: 70 x 50 in.

62287 – Retail Box

Premium Seat Covers

- 100% cotton twill with quilting and genuine leather accents
- Double reinforced fabric at stress points with sturdy brass fasteners
- Fully waterproof membrane with waterproof zippers
- SmartFit feature set plus rubberized, non-slip backing hold cover firmly in place



Premium Bucket Seat Covers

- Dimensions: 22 x 52 in.

Green 62456 – Brown Box

Grey 62457 – Brown Box



Premium Hammock Seat Covers

- Dimensions: 56 x 59 in.

Green 62447 – Brown Box

Grey 62448 – Retail Box



Premium Bench Seat Covers

- Dimensions: 56 x 47 in.

Green - 62433 – Brown Box

Grey 62434 – Retail Box

- Extra Wide Dimensions: 60 x 47 in.

Green Ex Wide 62435 – Brown Box

Grey Ex Wide 62446 – Brown Box

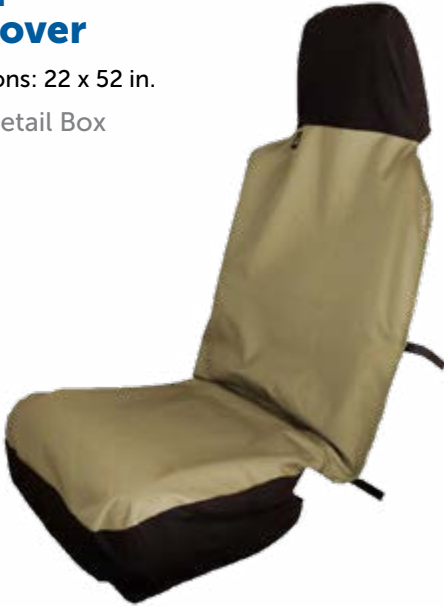
Waterproof Seat Covers

- Waterproof to keep seats clean and dry
- Machine washable
- Seat belt anchors and slits for a perfect fit

Waterproof Bucket Seat Cover

- Dimensions: 22 x 52 in.

62315 – Retail Box



Waterproof SUV Cargo Liner

- Dimensions: 70 x 50 in.

62316 – Retail Box



Waterproof Hammock Seat Cover

- Dimensions: 56 x 57 in.

Green - 62314 – Retail Box

Gray - 62422 – Retail Box



Waterproof Bench Seat Cover

- Dimensions: 56 x 47 in.

Green - 62313 – Retail Box

Gray - 62416 – Retail Box

- Extra Wide Dimensions: 60 x 57 in.

Ex Wide 62425 – Brown Box



TagAlong Booster Seats

- Supports seat from below, providing an unobstructed view and more comfortable ride for pets – no clumsy straps to get in their way
- Installs securely in 1 minute on any seat with separate headrests.
- Removable, washable liner to stay clean and fresh
- Safety leash included

Medium (Standard) – 62344
 Large (Standard) – 62345
 Large (Deluxe) – 62346
 Extra Large (Standard) – 62347
 Extra Large (Deluxe) – 62348

Size	Dimensions (D x W x H)	Max Pet Weight
Medium	12 x 14 x 8 in.	12 lb.
Large	14 x 16 x 8 in.	18 lb.
Extra Large	15 x 20 x 10 in.	25 lb.



Large (Deluxe)



Medium

Pet Safety Seat

- Integrates with the vehicle seat belt for added safety
- Can accommodate one or more pets up to 30 lb.
- Dimensions: 17 D x 22 W x 17 in. H

Standard – 62349 – Retail Box
 Deluxe – 62350 – Retail Box



Deluxe



Standard



Deluxe TagAlong Bicycle Basket

- Four, roomy pockets
- Removable sunshade
- Converts to carrier with included shoulder strap
- Holds pets up to 13 lb.

62330



Wicker TagAlong Bicycle Basket

- Full sheepskin liner for added comfort
- Removable sunshade
- Holds pets up to 13 lb.

62331

Trailers & Strollers

For pet owners who don't like leaving their pets behind

- Attach easily to a bicycle so pets and owners can cruise the open road together
- Includes front and rear doors, storage pockets, a huge sunroof and an adjustable leash to keep pets secure while riding
- Can be converted to an all-terrain stroller with the addition of the Stroller Conversion Kit
- The HoundAbout Classic features the original steel frame
- The HoundAbout II features the new lightweight and rust-proof aluminum frame



Large HoundAbout Classic Bicycle Trailer

White Box

Medium HoundAbout Classic Bicycle Trailer

White Box



Medium Stroller Conversion Kit

62396 – White Box
Trailer sold separately



Large Stroller Conversion Kit

62397 – White Box
Trailer sold separately



Size	Number	Dimensions (D x W x H)	Max Pet Weight
Medium HoundAbout	62340	17 x 26 x 20 in.	50 lb.
Medium HoundAbout II	62394	17 x 26 x 20 in.	50 lb.
Large HoundAbout	62341	22 x 33 x 26 in.	110 lb.
Large HoundAbout II	62395	22 x 33 x 26 in.	110 lb.

Enclosures



Wicker Pet Residence

- Rhino-wicker is easily cleaned and won't absorb fluid or odors
- Unique 2-way door opens in or out
- Elevated legs and feet protect flooring
- Double-tough pan is easily removed

Size	Number	Dimensions
Small	13202	18 x 24 x 21 in.
Medium	13302	21 x 30 x 24 in.
Large	13402	24 x 36 x 27 in.
Extra Large	13502	28 x 42 x 31 in.

Brown Box



Litter Pan Covers

- Rhino-wicker is easily cleaned and won't absorb fluid or odors
- Front door opens for easy cleaning
- Litter box slides out on glide rails

Size	Number	Dimensions
Large	14402	16 1/4 x 19 3/4 x 18 1/2 in.
Jumbo	14502	18 1/4 x 23 1/2 x 19 1/2 in.

Brown Box

Furniture Protectors

- Luxurious, quilted, micro-suede material with plush quilting
- Unique devices to keep covers in place
- Fully-waterproof membrane and stain resistant treatment
- Machine washable



Medium Bolstered Protector

- Fits dogs up to 35 lb.
- Generous bolster removes for washing
- Dimensions: 24 x 26 x 5 in.

62369 – Retail Box



Large Bolstered Protector

- Fits dogs up to 120 lb.
- Generous bolster removes for washing
- Dimensions: 46 x 26 x 6 in.

62371 – Retail Box

Access & Mobility





Batteries

Replaceable batteries for PetSafe® products. Pets and their owners develop routines around the convenience of our systems. Avoid the inconvenience of changing routines by keeping extra batteries on hand.



**6 Volt Lithium
Battery 2 pack**

RFA-67D-11



6 Volt Alkaline Battery

RFA-18-11



**3 Volt Lithium
Battery 2 pack**

RFA-35-11



3 Volt Battery

RFA-188



9 Volt Alkaline Battery

PAC11-12067



Merchandising Options

Showcasing products in an organized way helps consumers find exactly what they need while shopping your store. Our displays and racks make it easy to support the consumer shopping experience. Choose from a variety of options to maximize shelf space and create an impactful presentation of products.



Easy Walk® Harness 4 Hook Rack

DIS-EWH-4HK-KIT



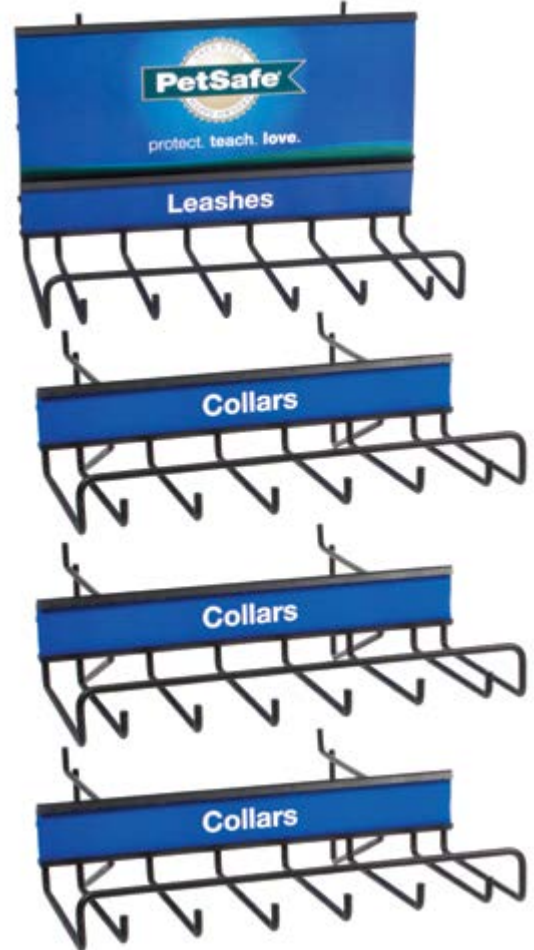
Gentle Leader® Headcollar 4 Hook Rack

DIS-GL-4HK-KIT



Come With Me Kitty™ 4 Hook Rack

DIS-CWMK-4HK-KIT



6 Hook Rack Kit

DIS-6HK-KIT



**Foam Dog Head
With Gentle Leader®
Headcollar**

DIS-FOAM-HEAD-GL



**Acrylic Countertop
Brochure Holder**

DIS-BRO-HOLDER



6 Hook Wire Dog Rack

DIS-6HK-WDR



2 Hook Table Rack

DIS-2HK-TABLE-RACK



Plastic Clip Strip

DIS-CLIPSTRIP



Dumpbin

415-1512



Pet Door Tape Measure - 25 Pack

415-1439



Easy Walk® Harness Tape Measure - 25 Pack

415-1488



Threshold Wire Rack

- Display mounts to the basedeck or shelf and holds 3 products

415-2973



**Drinkwell® Standard Filter
Tray 12-count**

PAC00-13715



**Drinkwell® Premium
Filter Tray 12-count**

PAC00-13716



**SlimCat™ Counter Top
Display - 16 Count**

TOY00116



4 Foot Showcase

Display includes:

- Flipbook 415-867
- Consumer guide 25/pk 415-2134
- Battery Fixture 415-2205
- 3 adjustable shelves

415-867/6

FREE with qualifying purchase.



2 Foot Showcase

Display includes:

- Flipbook 415-867
- Consumer guide 25/pk 415-2134
- Battery Fixture 415-2205
- 3 adjustable shelves

415-1825/4

FREE with qualifying purchase.



Automatic Ball Launcher Display

- Assembled dimensions: 14.75 x 14.75 x 49.5 in.
- 415-3156



2 Foot Door Display

Display includes*:

- Header Sign
- Pet Door Flipbook holder with flipbook
- Hanging aluminum door sample
- Hanging plastic door sample
- Hanging big cat door sample
- Metal product dividers

415-1523

*Doors are NOT included with the display. Doors are sold separately.



Feeder & Fountain Floor Display

- Fits the automatic feeders and most fountains for flexible assortment options
- Small footprint to fit in the pet food aisle
- Includes 2 header sign options and 2 adjustable shelves
- Assembled dimensions: 16.5 x 15.5 x 54 in.

415-3349

*Product not included, sold separately
FREE with qualifying purchase.

Includes two headers



Feeder Header

Feeder/Fountain Header



ScoopFree® Shipper

- Assembled dimensions: 23.5 x 30.5 x 56 in.

415-1486

*Product not included, sold separately



Pet Loo™ Floor Display

Display includes*:

- Metal floor stand with top shelf for smaller products, angled shelf for demo unit and Pee-Pod kits, middle shelf for Replacement Grass and bottom shelf for Pet Loo™ potty systems
- 2-side graphic panels

415-2339

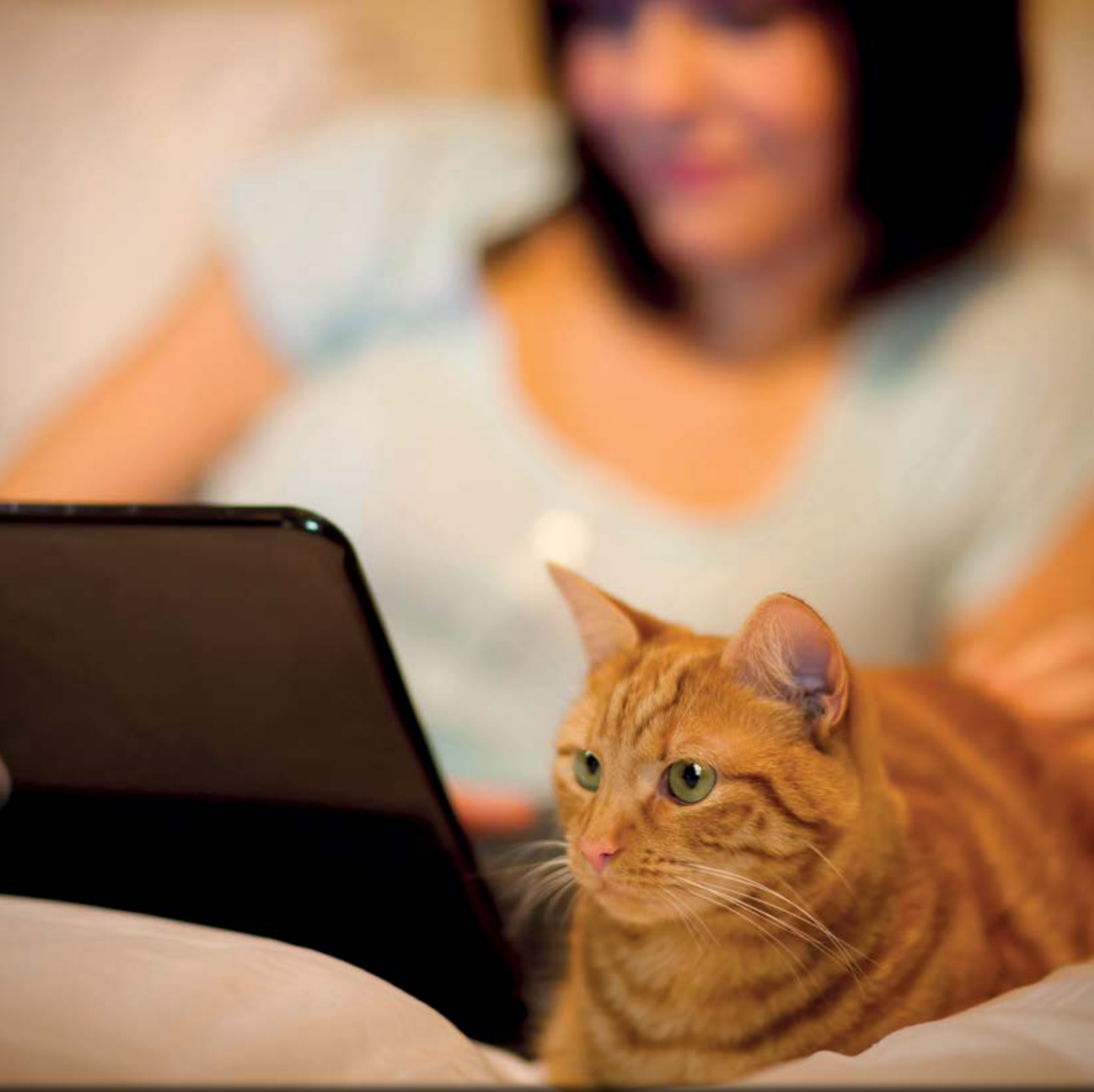
*Product not included, sold separately

Lawn Protector™ Display

- Includes 10 Lawn Protector 2-Packs
- Convenient display is compact and easy to set up

PAC00-16573





protect. teach. love.®

Radio Systems Corporation
10427 PetSafe Way | Knoxville, TN 37932
petsafe.com

©2018 Radio Systems Corporation. All Rights Reserved.
R415-403/17